



# 1 Connect

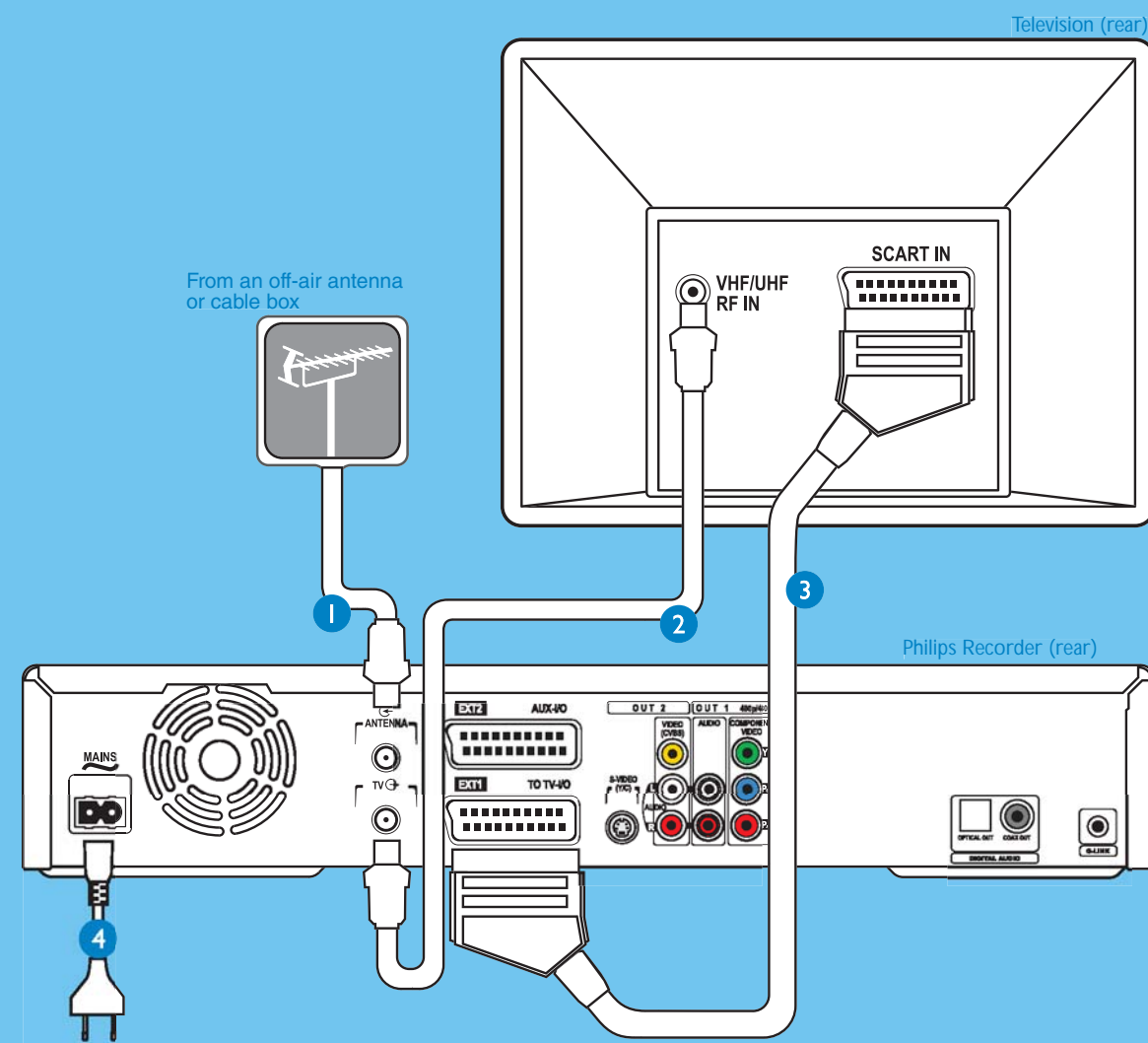
Start with the 'Basic connection'.  
If you have a VCR, follow the instructions for 'Connection with VCR or similar device'.  
If you have a set-top box, follow the instructions for 'Connection with set-top box'.

## Basic connection

### A Before connecting

Unplug the antenna cable that is currently connected to your TV.

### B Connecting



- 1 Disconnect the antenna cable from your TV and connect it to the ANTENNA socket on this recorder.
- 2 Use the supplied RF coaxial cable to connect the TV socket on this recorder to the Antenna In socket on your TV.

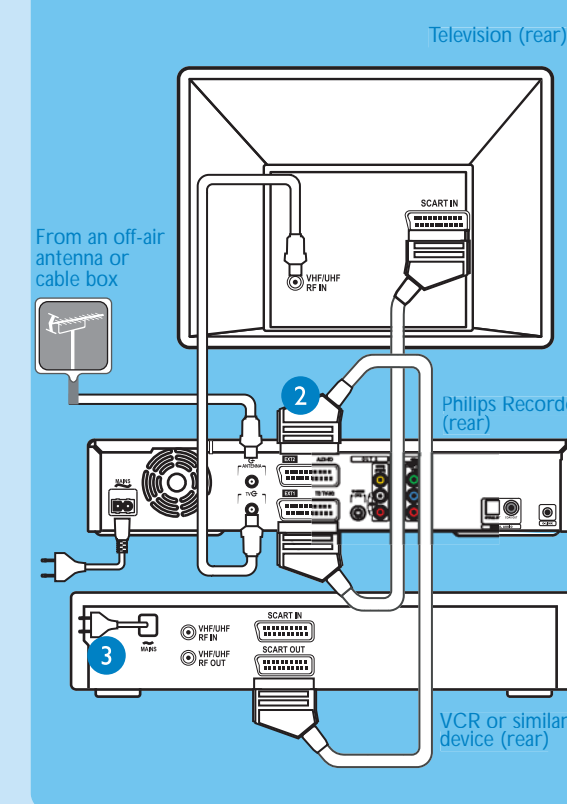
- 3 Use the supplied scart cable to connect the EXT1 TV-I/O Scart socket on this recorder to the SCART IN socket on your TV.  
**Note** See the accompanying user manual for other possible connections (e.g. S-VIDEO, Component Video).
- 4 Connect the power cable from the recorder to an AC power outlet.

## Connection with VCR or similar device

### A Before connecting

Your new Philips Recorder replaces the VCR for your recording needs. First, unplug all the connections from your VCR.

### B Connecting



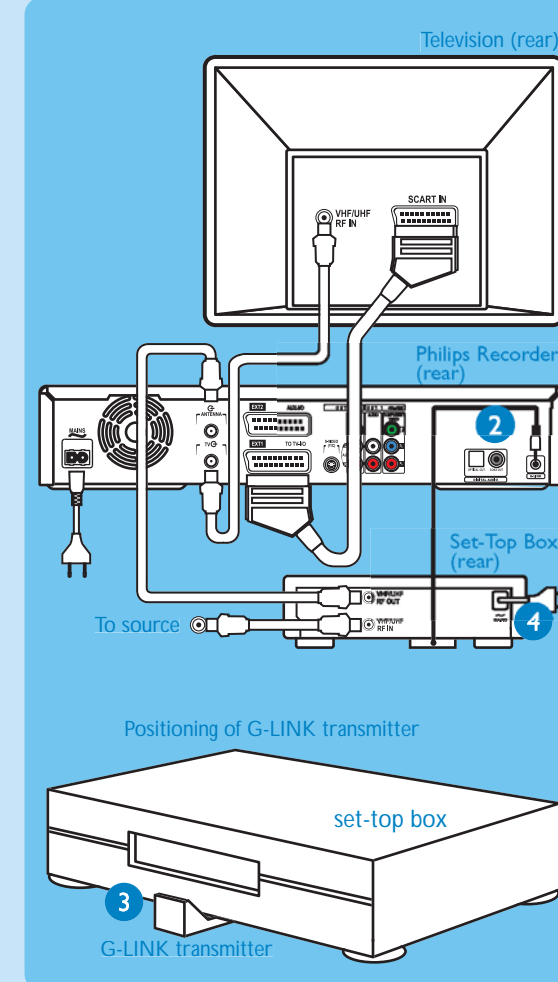
- 1 Follow step 1 to 4 of 'Basic connection' to connect this recorder before you proceed to step 2 below.
- 2 Use another scart cable (not supplied) to connect the EXT2 AUX-I/O Scart socket on this recorder to the SCART OUT socket on your VCR.
- 3 Connect the power cable from the VCR to an AC power outlet.

**Note** In this setup, the VCR cannot record TV programmes.

## Connection with set-top box

Your new Philips Recorder provides a G-LINK transmitter which allows you to control the tuner of the set-top box (satellite receiver, cable TV box) through the GUIDE Plus+ system. You can record the TV programmes that are received through the set-top box.

### Connecting

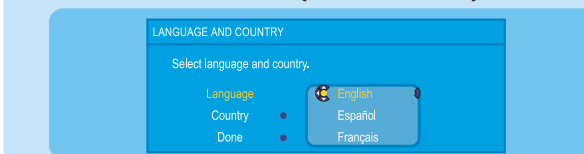


- 1 Follow step 1 to 4 of 'Basic connection' to connect this recorder before you proceed to step 2 below.
- 2 Connect the supplied G-LINK cable to the G-LINK socket on this recorder.
- 3 Place the G-LINK transmitter in front of your set-top box in such a way that it can acquire the signal broadcasted by the transmitter.
- 4 Connect the power cable from the set-top box to an AC power outlet.

# 2 Set up

## A Finding the viewing channel

- 1 Press **STANDBY-ON** on the recorder. The recorder will display 'IS THE TV ON?'.
- 2 Switch on the TV. You should see the { EASY SETUP } menu.



**Note** If connected to your VCR, make sure it is turned off before proceeding.

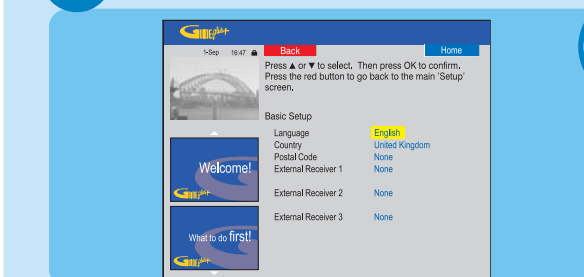
- 3 If not, press the Channel Down button on your TV's remote control repeatedly (or AV, SELECT button) until you see the menu. This is the correct viewing channel for the recorder.

## B Start basic setup

Use the recorder's remote control and follow the on-screen instructions to complete the installation.

- 1 Select the desired menu language, your country and the TV shape.  
**Note** Select { Done } in the menu and press **OK** to go to the next screen.
- 2 Activate automatic channel search.
- 3 Check the date and time and press **OK**.
- 4 To continue with the GUIDE Plus+ installation, select { Continue } and press **OK**. Otherwise, select { Install later } and press **OK**. Wait until the recorder has finished initialising the system, then press **OK** again.

## C Install the GUIDE Plus+ system

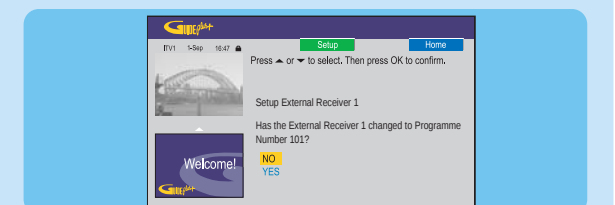


- 1 Check your language, country and postal code. To change, press **OK** and follow the on-screen instructions.

## D Install the set-top box

If you do not have a set-top box, skip 'D' and go to 'E'.

- 1 Press **DOWN** to select 'External Receiver 1' and press **OK**.
- 2 Press **OK** again to continue.
- 3 Select the type of reception, service provider and brand name of the connected set-top box.  
**Note** Press **OK** to go to the next screen. Select { None } if none of the entries are applicable.
- 4 Select the recorder socket through which your set-top box is connected (e.g. 'EXT2' for EXT 2 AUX-I/O socket) and press **OK**.
- 5 Turn on your set-top box and select channel number **02** on the set-top box.
- 6 Read the instructions on the TV and press **OK**.



- 7 The recorder will now attempt to change the set-top box's channel through the G-LINK transmitter. If the set-top box has switched to the same programme number as displayed on the TV, select { Yes } in the menu and press **OK**.  
**Note** If not, select { No } and press **OK** to try a different code.
- 8 Your set-top box is now installed.

## E Load the TV listing data

- 1 Press the **GREEN** button to leave the menu.  
**Note** To switch the GUIDE Plus+ system's host channel manually, go to { Host Channel Setup }.
- 2 Press **GUIDE** to exit the GUIDE Plus+ system. Leave the recorder in 'standby' mode and turn 'on' the set-top box overnight to collect the TV listing data, this may take up to 24 hours.  
**Note** If you tune to your Host Channel before going to 'standby' mode, this recorder will start immediately to download the TV listings data.
- 3 Check the { Editor } screen the next day to ensure the source and programme numbers are matching for all channels.

