

# 3 Enjoy

## Start recording

### A Record from TV or an external device

- 1 Insert a recordable DVD disc in the tray.

#### Types of discs for recording



- To record a TV programme, Press **0 - 9** to select the preset channel to record.

**Note** If you have used Option B in 'Basic Connection', press **SOURCE** repeatedly to select 'EXT1'. Use the remote control of your cable box to select the TV programme to record.

- To record from a connected device, press **SOURCE** repeatedly to select the video source to record (DV IN or EXT1).

**Note** Press **REC MODE** repeatedly to select a preferred recording mode.

Record Quality	Hours of recording that can be stored on an empty DVD recordable disc.	
	DVD±R/ DVD±RW	DVD+R Double Layer
<b>HQ</b> (high quality)	1	1 hr 55 mins
<b>SP</b> (standard play)	2	3 hrs 40 mins
<b>SPP</b> (standard play plus)	2.5	4 hrs 35 mins
<b>LP</b> (long play)	3	5 hrs 30 mins
<b>EP</b> (extended play)	4	7 hrs 20 mins
<b>SLP</b> (super long play)	6	12 hrs

- 2 Press **●** to start recording, press **●** again to automatically record 30 minutes.
- 3 To end recording, press **■**. 'UPDATE' is displayed on the recorder.
- 4 To playback the recording, press **DISC MENU**, select the title and press **▶||**.

## Start playback

### A Play from disc

- 1 Press **▲** to open the disc tray. Load a disc and close the disc tray.
- 2 Press **DISC MENU**.
- 3 Use **◀▶▲▼** keys to reach the title/file you want to play and press **▶||** to start.

### B Play from USB device

- 1 Insert the USB device to the USB port.
- 2 Press **USB** to show the contents list.
- 3 Select the preferred content and press **▶ right**.
- 4 Select a data file (MP3, WMA, DivX and JPEG) and press **▶||** to start playback.

Register your product and get support at:  
[www.philips.com/support](http://www.philips.com/support)

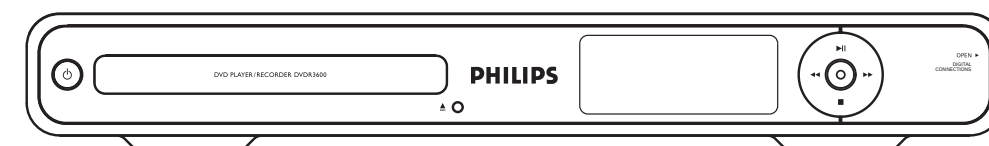
DVDR3600

# Quick Start Guide



- 1 Connect
- 2 Set up
- 3 Enjoy

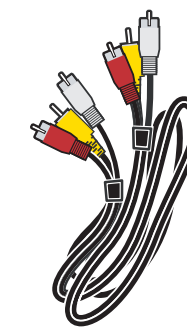
## What's in the box?



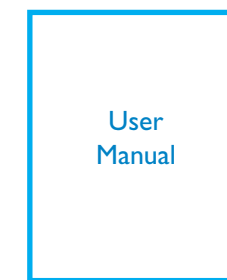
DVD Player/Recorder



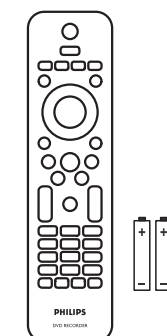
RF antenna cable



Audio/video cable



User Manual



Remote Control and 2 batteries

## Need help?

### User Manual

See the user manual that came with your Philips recorder.



2008 © Koninklijke Philips N.V.  
All rights reserved.

12 NC 3139 245 2898 I

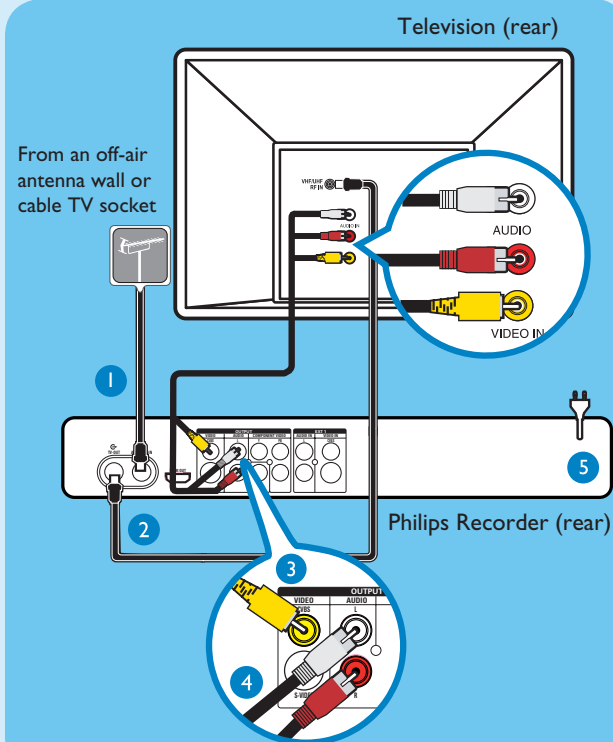
# PHILIPS

# 1 Connect

## Basic Connection

### Before Connecting

Select one of the following basic connections ( **A** or **B** ) according to the type of connecting devices you have.

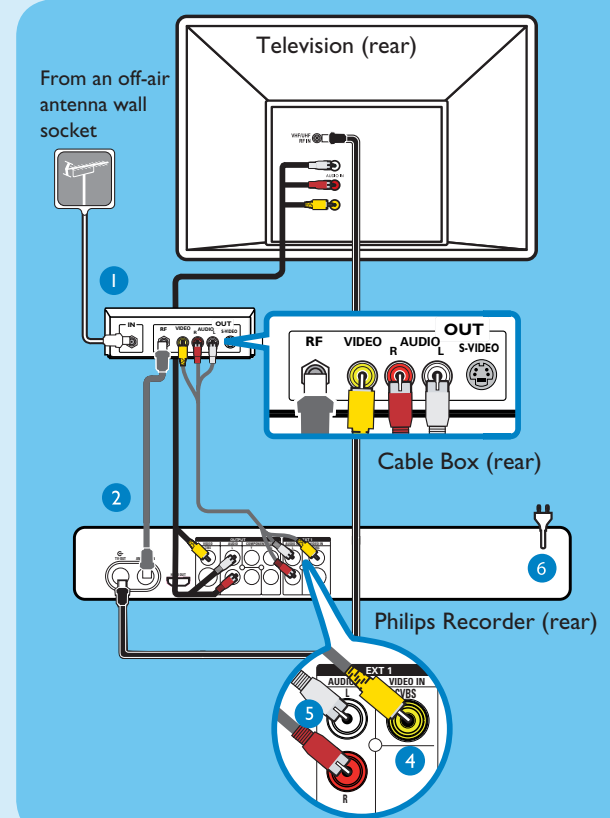


### Option A

Use this connection if you are connecting the antenna cable directly from the antenna wall socket or from a cable TV socket.

- 1 Unplug the antenna cable that is connected to your TV and plug it into the **ANTENNA-IN** socket on this recorder.
- 2 Connect the supplied RF antenna cable from the **TV-OUT** socket on the recorder to the Antenna In socket on the TV.
- 3 Connect a composite video cable (yellow end) from the **CVBS OUTPUT** socket on the recorder to the video input socket on your TV.
- 4 Connect an audio cable (red/white ends) from the **AUDIO L/R** sockets on the recorder to the audio input sockets on your TV.
- 5 Plug in the power cord from the recorder to an AC power outlet.

**Note** See the accompanying user manual for other possible connections (e.g. Component Video, S-VIDEO).



### Option B

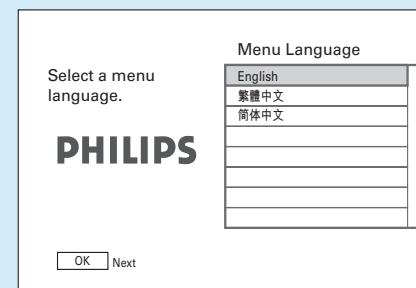
Use this connection if your current antenna cable is connected to a cable box.

- 1 Keep the existing antenna connection from the cable box to your TV.
- 2 Connect the supplied RF antenna cable from the **ANTENNA-IN** socket on the recorder to the RF Out socket on the cable box/ satellite receiver.
- 3 Follow steps 3 to 4 under 'Option A' before you proceed to step 4 below.
- 4 Connect a composite video cable (yellow end) from the **VIDEO IN-CVBS** socket on the recorder to the video output socket on your cable box/satellite receiver.
- 5 Connect an audio cable (red/white ends) from the **AUDIO IN L/R** sockets on the recorder to the audio output sockets on your TV.
- 6 Plug in the power cord from the recorder to an AC power outlet.

# 2 Set up

## A Finding the viewing channel

- 1 Press **⏻** on the recorder.
- 2 Switch on the TV and other connected devices (e.g. Cable box, Satellite receiver). The installation menu is displayed.



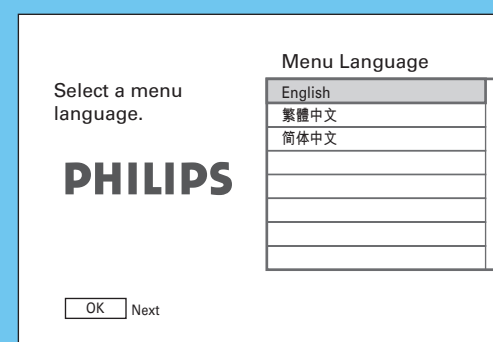
- 3 In case you don't see the recorder's installation menu, press the channel down button on the TV's remote control repeatedly (or AV, SELECT, **⏻** button) until you see the menu. This is the correct viewing channel for the recorder.

## B Start basic setup

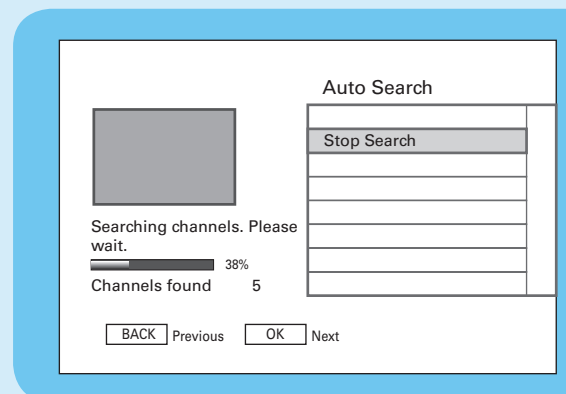
Use the recorder's remote control and follow the on-screen instructions to complete the installation.

**Note** Press **▲ ▼** keys to toggle through the options. Press **▶** to select an item. To confirm your selection, press **OK**.

- 1 Select the menu display language.



- 2 Set the date. Use the **numeric keypad 0-9** or **▲▼◀▶** keys to enter the correct date. Press **OK** to confirm.
- 3 Set the time. Use the **numeric keypad 0-9** or **▲▼◀▶** keys to enter the correct time. Press **OK** to confirm.
- 4 Automatic channel search begins.



**Note** If you have used Option B in 'Basic Connection' press **OK** to skip channel search and proceed to the next step. No preset channels will be stored.

- 5 All available TV channels are stored. The first preset channel appears.



- 6 Press **OK** to exit.

**The recorder is now ready for use.**