

3 Enjoy

C Record to a recordable DVD disc

- 1 Press **TUNER** to switch to tuner mode.
- 2 Press **P + / -** to go to the TV program channel you wish to record.
- 3 Insert a recordable DVD disc. Press **DVD REC** to switch to direct record mode and display the information bar.

System State: Stop
Record to Optical Disc As **Standard Play**
Elapsed Time: 00:00:00 Remaining Time: 02:00:00

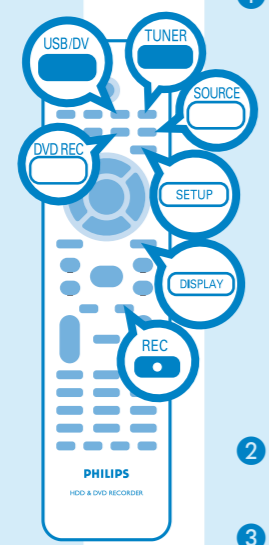
Note To record from a connected external device, press **SOURCE** repeatedly OR press **USB/DV** to record from a DV camcorder connected via the DV IN jack on the recorder.

- 4 Press **SELECT** repeatedly to select the preferred mode of recording quality.

Types of discs for recording

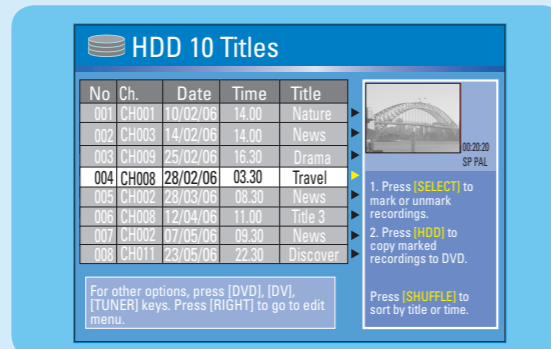


- 5 Press **REC** to start recording.
- 6 To stop the recording, press **STOP**.



Start playback

A Playback from hard disk



- 1 Press **HDD** to view the titles on the hard disk.
- 2 Use **up ▲** or **down ▼** keys to select the title.
- 3 Highlight the title you want and press **▶▶** to start playback.

Note To access the edit menu, highlight the title and press **right ▶**.

- 4 Press **HDD** to go back to the HDD menu anytime.

B Playback from a disc

- 1 Insert a CD or DVD disc. If the disc menu does not show, press **DVD** to view the list of titles on the disc.



- 2 Use **up ▲** or **down ▼** keys to scroll through the list of options and/or titles.
- 3 Highlight the title you want and press **▶▶** to start playback.
- 4 To stop, press **STOP**.
- 5 Press **DVD** to go back to the disc menu anytime.

For more recording and playback options, see the accompanying User Manual.

3 Enjoy

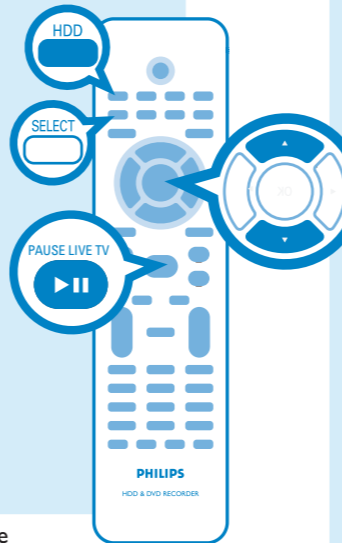
Copying to a recordable DVD disc

You can copy the contents in your hard disk to a DVD recordable disc.

- 1 Insert a recordable DVD disc.
- 2 Press **HDD** to view the titles on the hard disk.
- 3 Use **up ▲** or **down ▼** keys to select the title.
- 4 Press **SELECT** to mark the titles you wish to copy.
- 5 Once you finish your selection, press **HDD** to start copying to the recordable DVD disc.

Note When copying is in progress, the icon will be shown on the screen.

- 6 During copying, you can continue watching TV programs in tuner mode or select another HDD title for playback.
- 7 Once the copying process completes, the icon will no longer be shown.



Types of discs used on this recorder

Type	Record	Playback	Edit
DVD+RW	✓	✓	✓
DVD+R	✓	✓	✓
DVD-RW	✓	✓	✓
DVD-R	✓	✓	✓
DVD VIDEO	✗	✓	✗
AUDIO CD	✗	✓	✗
VIDEO CD	✗	✓	✗
DATA CD	✗	✓	✗
DATA CD	✗	✓	✗

HDD & DVD Player/ Recorder

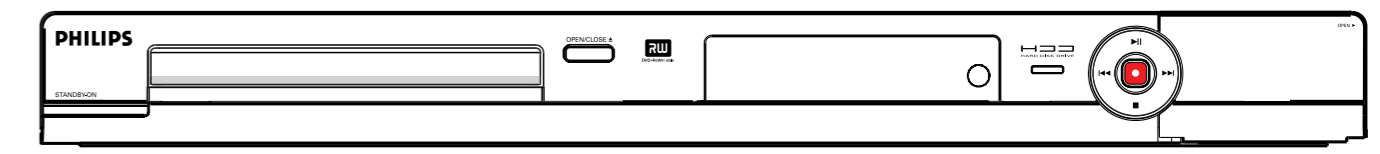
DVDR3450H
DVDR3452H
DVDR3460H
DVDR3465H

Quick Start Guide

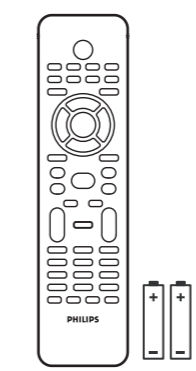


- 1 Connect
- 2 Set up
- 3 Enjoy

What's in the box?



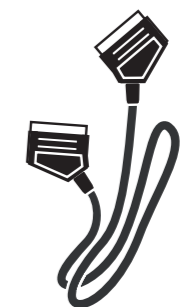
HDD & DVD Player/Recorder



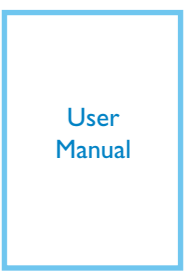
Remote Control and 2 batteries



RF Coaxial Cable



SCART Cable



User Manual

Need help?

Onscreen Helptext

Press **DISPLAY** on the remote control for onscreen helptext when using your Philips recorder.

User Manual

See the user manual that came with your Philips recorder.

Online

Go to www.philips.com/support.



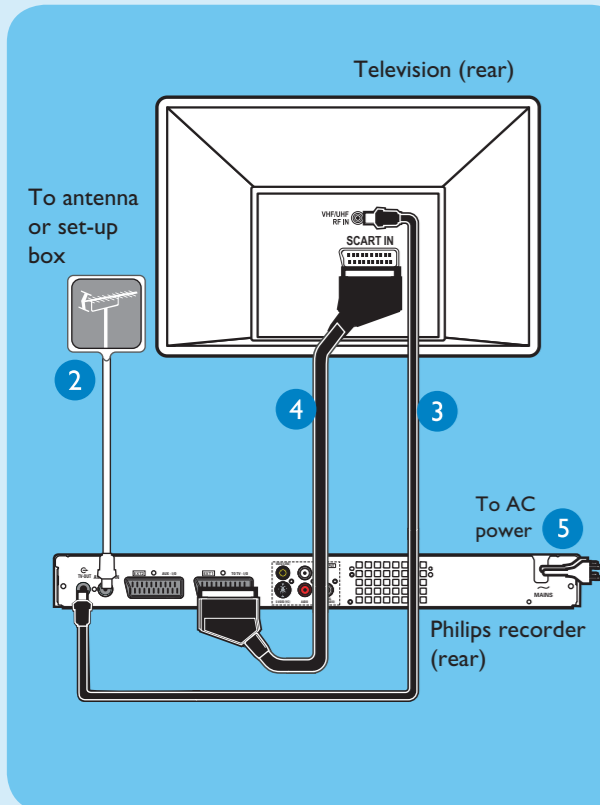
2006 © Koninklijke Philips N.V.
All rights reserved.
12 NC 3139 245 24441



1 Connect

Start with the 'Basic Connection.'
If you have a VCR, follow the instructions for 'Connection with a VCR or similar device'.

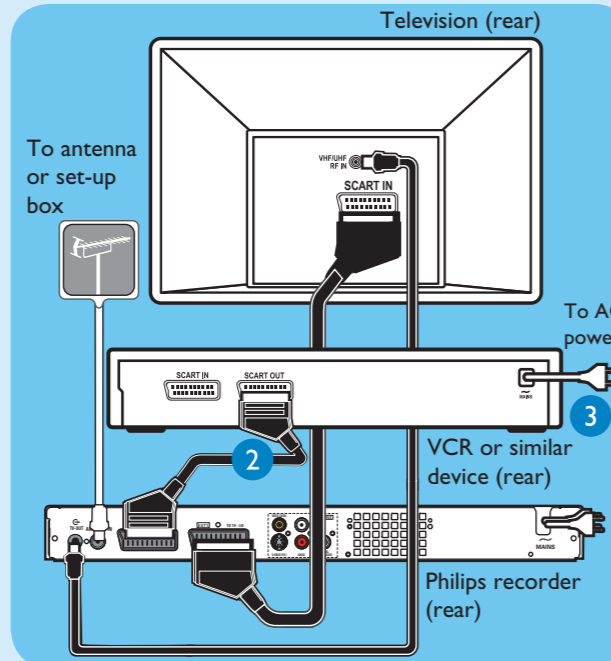
Basic Connection



- 1 Before connecting, unplug the antenna cable that is currently connected to your TV.
- 2 Connect the antenna cable to the **ANTENNA-IN** jack on the recorder.
- 3 Use the supplied RF coaxial cable to connect the **TV-OUT** jack on this recorder to the Antenna In jack on the TV.
- 4 Use the SCART cable to connect the **EXT1 TO TV-I/O** socket on this recorder to the corresponding SCART input socket on the TV.
- 5 Connect the power cable from the recorder to an AC power outlet.

Connection with a VCR or similar device

Your new Philips recorder replaces the VCR for your recording needs. First, unplug all the connections from your VCR.



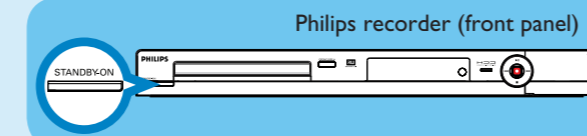
- 1 Follow the steps under 'Basic Connections' before you proceed to step 2 below.
- 2 Use another SCART cable (not supplied) to connect the **EXT2 AUX-I/O** SCART socket on this recorder to the SCART OUT socket on the VCR.
- 3 Connect the power cable from your VCR to an AC power outlet.

Note In this setup, the VCR cannot record TV programmes.

For additional connection diagrams, see the accompanying User Manual.

2 Set up

A Finding the viewing channel



- 1 Press **STANDBY-ON** on the recorder
- 2 Turn on the TV.

Note If connected to your VCR, make sure it is switched off or in standby mode before proceeding.

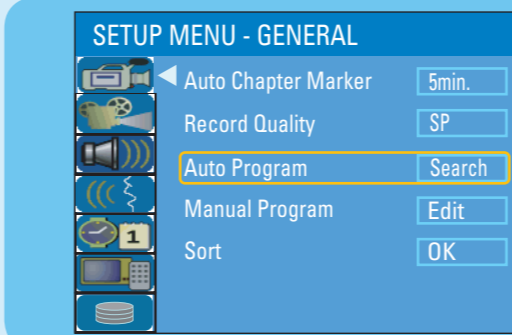
- 3 Press **SETUP**.
- 4 Press '0' on the TV's remote control, then press the Channel Down button repeatedly until you see the { **SETUP MENU - GENERAL** } page. This is the correct viewing channel for the recorder.



Note You may press the AV or SELECT button on the TV's remote control (if available) to select the correct viewing channel. See your TV's user manual.

B Initial Installation

- 1 Press **SETUP** on the remote control.



- 2 Select the OSD language.
 - Highlight and press right. Select { **Menu Language** } and press right to access the options. – Select the desired language option and press OK to confirm your selection.

- 3 Select the country of your residence.
 - Press down key to select { **Country Selection** } and press right to access the options. – Select the country of your residence and press OK to confirm your selection.

- 4 Setup and install TV channels.
 - Use up / down to select { **Auto Program** } and press OK. → A warning message will appear. Select CONTINUE and press OK to start automatic TV channel search.

Note If no channels were found, check the antenna connection and start the channel search again.

- 5 Set the date and time.
 - Highlight 1 and press right. Select { **Date-Time Programme** } and press right to access the options. → Select the desired broadcast channel to automatically set the date/time and press OK to confirm.

- 6 Press **SETUP** to finish the installation.

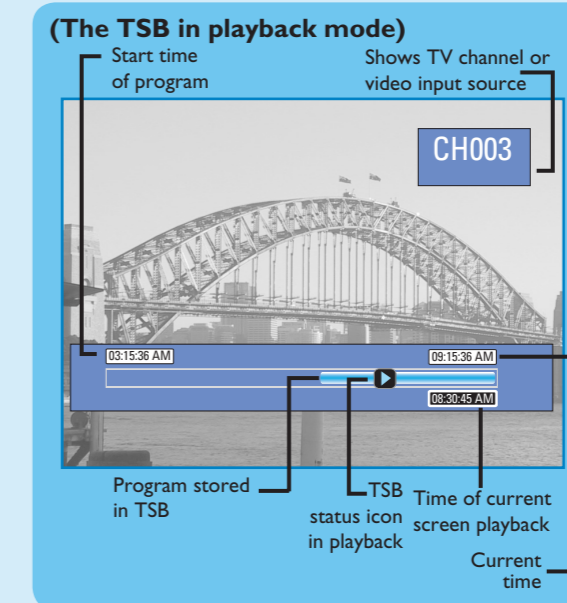
Your Philips recorder is now ready for use!

3 Enjoy

About the Time Shift Buffer (TSB)

Once you switch on this recorder, the currently selected TV program will be stored in a temporary storage called the 'Time Shift Buffer'(TSB). The TSB can store up to 6 hours of recordings temporarily.

Press **DISPLAY** once to display the Time Shift video bar.



The contents on the time shift buffer will be erased once you press **P + / -** or if you switch to another mode: **SOURCE**, **USB/DV**, **DVD REC**.

Pause 'live' TV

At times, you may be interrupted while watching your favourite program. Now you can **PAUSE** it, as if you were in control of the broadcast.

- 1 Press **PAUSE LIVE TV** while watching any live TV program to suspend it.
- 2 Press **PAUSE LIVE TV** to continue.
- 3 To return to live broadcast, press and hold **right**.

To jump forward playback, press **right** once for every 30 seconds.

Instant Replay

While watching a live TV program, you can press **left** to jump back 10 seconds upon every single press for instant replay.

To return to live broadcast, press and hold **right**.

Start Recording

A Before recording to hard disk

You can preset the recording quality for content recorded to the time shift buffer.

- 1 Press **SETUP** on the remote control.
- 2 Highlight and press right. Press down repeatedly until you highlight { **Record Quality** } and press right.
- 3 Use up / down keys to select the preferred mode of recording quality and press OK to confirm.

B Record to hard disk

- 1 Press **TUNER** to switch to tuner mode.
- 2 Press **P + / -** to go to the TV program channel you wish to record.
- 3 Press **DISPLAY** to display the time shift video bar.



Note To record from a connected external device, press **SOURCE** repeatedly to cycle through video input sources from:
{ CAM 1 } : VIDEO jack on the front
{ CAM 2 } : S-VIDEO jack on the front
{ EXT 1 } : VIDEO (CVBS) EXT1 jack on the rear
{ EXT 2 } : S-VIDEO (Y/C) EXT2 jack on the rear

or Press **USB/DV** to record from a DV camcorder connected via the DV IN jack on the recorder.

- 4 Press **REC** to start recording.

Note Press **REC** repeatedly to extend 30 minutes increments per single press.

- 5 To stop recording, press **STOP**.