

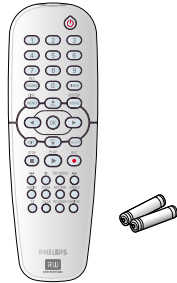
## 1 what's in the box

### A Main Unit



### B Remote control

includes 2x AA batteries



### C RF coaxial cable

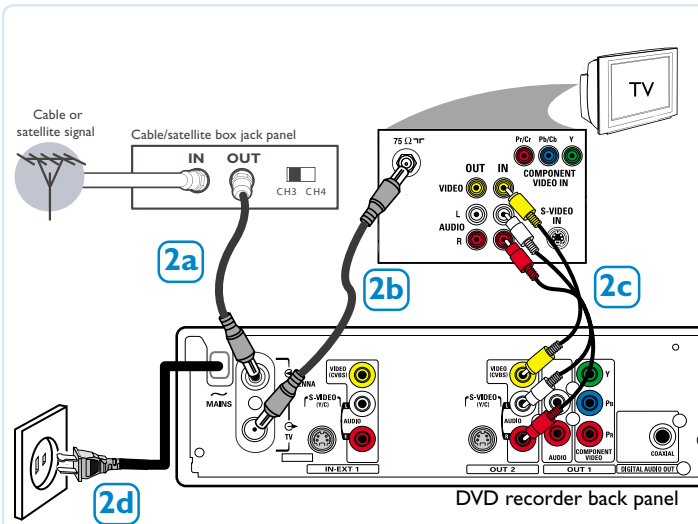


### D Video/Audio (AV) cables

(yellow/red/white)



## 2 connect DVD recorder

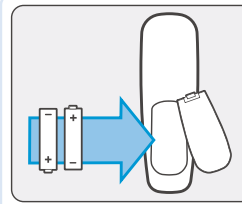


- 2a** Connect existing antenna cable/satellite signal (or from the Cable/Satellite Box [RF OUT or TO TV]) to the **ANTENNA** input jack at the back of the DVD recorder.
- 2b** Use the supplied RF coaxial cable to connect the DVD recorder's **TV** output jack to your TV's antenna input jack.
- 2c** Use the supplied AV cables (yellow/red/white ends) to connect the DVD recorder's **VIDEO (CVBS)** and **AUDIO L/R OUT2** jacks to the matching Video/Audio input jacks at the back of your TV.
- 2d** Connect the power cable from the DVD recorder's **~ MAINS** to the AC power outlet.

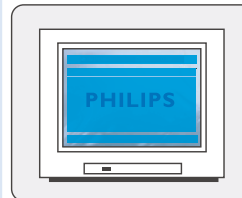
#### Helpful Hint:

For additional types of connections, see **User Manual pages 12~19**.

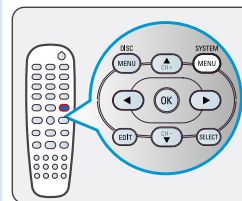
## 3 Start initial setup



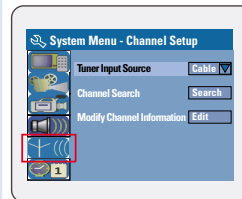
### 3a Insert batteries.



- 3b** Turn on the TV to the correct program number for the input jack (e.g. 'EXT', '0', 'AV').  
→ The blue PHILIPS DVD background screen will appear on the TV.

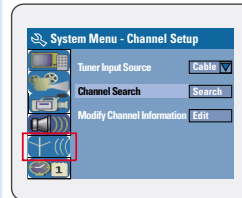


- 3c** Press **SYSTEM MENU** on the remote control.  
→ Use **▲ ▼** keys to go through the menu. Select an item by pressing **▶**, and confirm a setting by pressing **OK**.

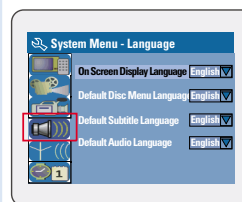


- 3d** Highlight and press **▶**.  
**Setup and install TV channels.**

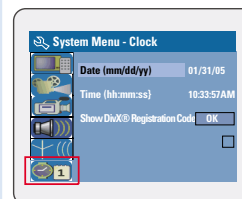
- Select { **Tuner Input Source.** }  
– { **Cable** } if the DVD recorder is connected via a cable/satellite box.  
– { **Air** } if the DVD recorder is connected directly to the antenna wall outlet.



- Select { **Channel Search** } and press **OK** on the remote control to start automatic TV channel search.



- 3e** Highlight and press **▶**.  
**Select the language.**
- select TV On-Screen Display language.
  - select default Disc Menu language.
  - select default subtitle language.
  - select default audio language.



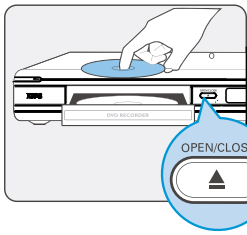
- 3f** Highlight and press **▶**.  
**Set the Date and Time.**  
Use the **numeric keypad 0-9** to input the date/time, then press **OK** to confirm.

- 3g** Press **SYSTEM MENU** to exit.

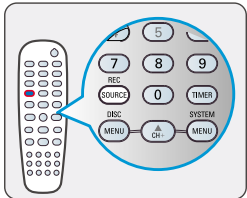
**The DVD recorder is ready for use!**

See next page for basic recording and playback.

## 4 start manual recording

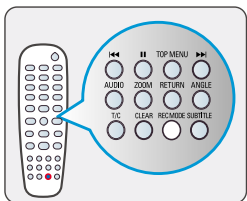


**4a** Insert a recordable DVD+R/+RW with the label facing up.



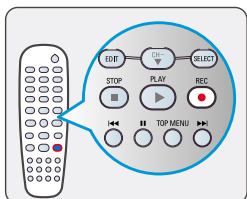
**4b** To record TV program, press **REC SOURCE** to select {Tuner.}

To record from an additional device connected to this DVD Recorder, press **REC SOURCE** repeatedly to select the corresponding external input channel : { Front CVBS, } { Front S-Video, } { Rear CVBS, } { Rear S-Video, } { DV. }

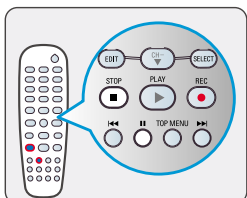


**4c** Press **REC MODE** to select a desired recording mode. It defines the picture quality and the maximum recording time for a disc.

Record Mode	Picture Quality	Maximum Recording Time per Disc
1 Hour Mode	High quality	1 hour
2 Hour Mode	DVD quality-Standard Play	2 hours
4 Hour Mode	VHS quality-Extended Play	4 hours
6 Hour Mode	VHS quality-Super Long Play	6 hours



**4d** Press **REC** ● to start recording.



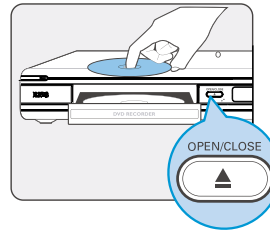
**4e** To pause the recording, press **II**. To resume recording, press **REC** ●.

To stop the recording, press **STOP** ■.

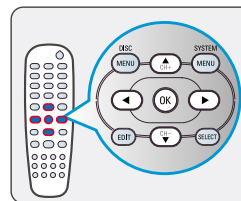
→ Wait until the message disappears from the display panel before you remove the disc.

## 5 start playback

To playback a disc

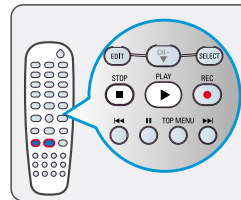


**5a** Insert a disc with the label side facing up.



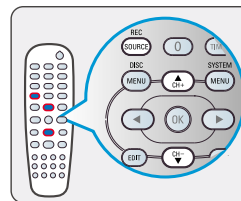
**5b** Playback may start automatically. If not, press **PLAY** ▶.

→ If a disc menu appears, use ◀▶▲▼ keys to navigate within the menu, highlight a title and press **OK** to start playback.



**5c** To stop playback, press **STOP** ■.

To watch the TV programs



**5d** Press **REC SOURCE** to select {Tuner,} then use ▲▼ keys to select the program number.

### GET PICTURE

- Check the AV mode on TV. It may be called FRONT, A/V IN, or VIDEO. Choose the different modes using TV remote control.
- Or, use the TV remote control to select Channel 1 on TV, then press Channel down button until you get the picture.
- Or, select CHANNEL 3 or 4 on the TV if you are using a RF modulator or Cable/Satellite Box.
- See your TV manual for more details.

### GET SOUND

- Connect the AUDIO L/R (red/white) jacks at the back of the DVD recorder to the correspond AUDIO input jacks on a TV, stereo system or receiver. Turn on the connected system and select the appropriate channel.