

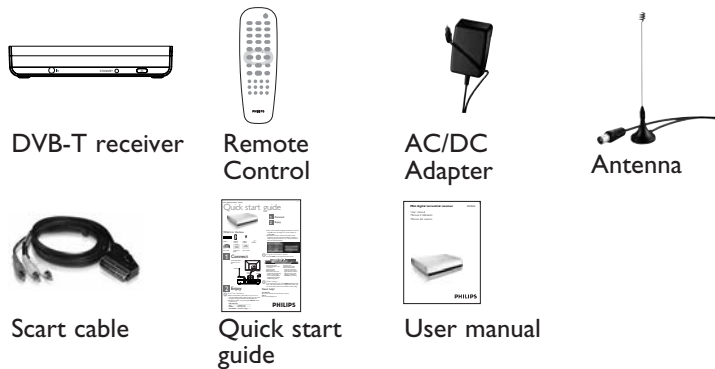
Quick start guide



1 Connect

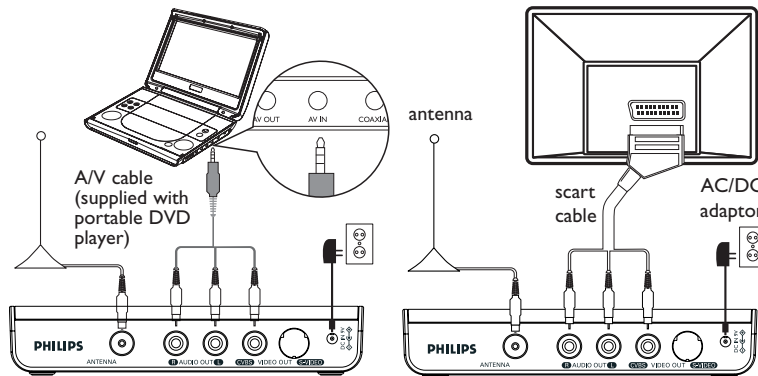
2 Enjoy

What's in the box



1 Connect

Connecting DVB-T receiver to a TV set and DVD player.



Make sure the A/V input of TV or DVD player is selected.

2 Enjoy

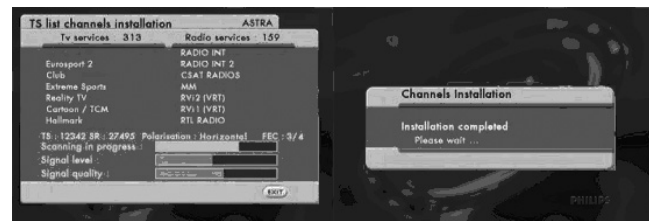
A First-Time installation

- Before the installation, please make sure you are in an area with sufficient DVB-T signal coverage. You can check the signal coverage on website www.philips.com/support
- Switch the receiver on by pressing the **ON/OFF** on the remote control.

LED indication

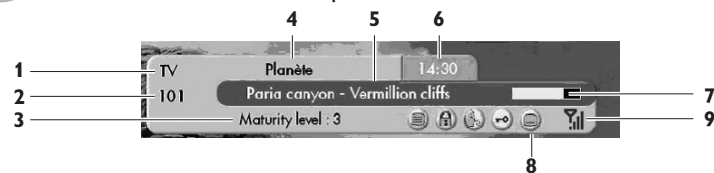
RED	Standby mode
GREEN	Running mode
ORANGE	A timer is running

- Then, select the desired language and follow by TV format using **◀▶**. Once, all settings are corrects, validate by pressing **OK**.
- Validate the screen to launch the automatic channel installation. Once the automatic installation is finished, a temporary pop-up indicates it to you. The first channel is then automatically displayed.



B Program information banner

Press the **INFO** to call up the information banner:



- Channel list name
- Channel number in the current list
- Maturity level
- Channel name
- Information about the present and the following events of the current service. Pressing **◀▶** to toggle between present and following events.
- Current time
- Duration bar graph
- Some specific icons relative to the service properties (from left to right Teletext presence / channel locked / audio language / scrambled / DVB-Subtitle presence).
- Reception quality: the more bars are shown the better the reception is.

C Other settings

From everywhere, a press on the **MENU** displays the main menu. This menu allows you to configure the receiver and the TV set. Please refer to User Manual for detail setting.

Need help?

User Manual

See the user manual that came with your receiver.

Online

Go to www.philips.com/support

PHILIPS