

## 简介:

飞利浦将不断努力，让您以最佳的方式体验我们的产品。要获得最佳播放和最新功能，我们强烈建议您更新播放机的固件。

**There is a do-it-yourself video specially produced to show you the steps on firmware update. Please click on “Tutorials” / “Instruction Video” and then on “Firmware Upgrade DS9800W” to view the video.**

All products > Sound and vision > Home audio > Docking Speakers

### Philips Fidelio SoundSphere Docking speaker with AirPlay DS9800W

DS9800W37

Buy

Click for Live Chat!

Call customer support

Search for information about this product

Enter keywords

**Product support** Tutorials

- Overview
- Tutorials**
- Getting started
- User manuals
- Frequently asked questions
- Software and drivers
- Product information
- Parts & accessories
- Service/Warranty
- Online Store
- Service/Warranty
- Product registration

Here you will find step-by-step instructions and simple-to-follow videos to help you with your Philips product. Just select the topic you wish to learn more about and a separate window will pop up to guide you through. It's fun and easy!

Sort by:  Topic  Popularity  Date published

#### Use and Learn

- Positioning the speakers
- Closing
- Setting up Wi-Fi Connection
- Playing music with SoundSphere technology
- Fidelio App
- Welcome
- Playing music with AirPlay technology
- The charging dock

**Software Upgrade**

- Firmware Upgrade DS9800W

Overview Specifications Reviews **Support**

Search within this product

### Manuels & Documentation

- Quick start guide (2.3 MB)
- User manual (849 KB)
- Leaflet (1.6 MB)

Other languages [▶](#)

### Software and drivers

- Software Upgrade  
Latest version: 3.8.79.1001, 2011-09-08

Register  
Do you own this product?  
[Register your product ▶](#)

### Frequently Asked Questions

Select Category

- I am trying to connect the speakers to a non-WPS router. What should I do if I cannot get access to the configuration page (192.168.1.1)?
- After completed all the steps required for non-WPS WiFi setup, the speakers are not connected to the Wi-Fi network properly. What should I do?
- What should I do if I cannot connect the speakers to the Wi-Fi network using the WPS method?
- What should I do if the AirPlay icon is missing from iPod or iTunes?
- Does this product support iPod, iPhone or iPad?
- How do I clean my device?
- Which version of iOS in iPhone is recommended for this device?
- I have trouble streaming music from iPhone 4S to AirPlay speakers. What can I do?
- What should I do if I cannot adjust the volume with the remote control?
- What should I do if iTunes appears an error message during connection?

### Tutorials

Select chapter

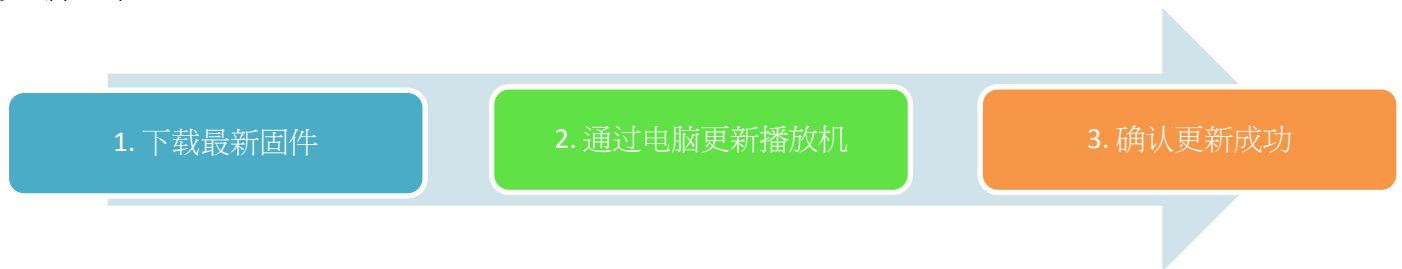
- Setting up Wi-Fi Connection
- Positioning the speakers
- The charging dock
- Playing music with AirPlay technology
- Playing music with SoundSphere technology
- Closing
- Welcome
- Firmware Upgrade DS9800W**

## 固件更新准备:

### 通过电脑更新:

- 带有支持 ZIP 格式的存档实用程序（例如 WinZip for Windows）的电脑。
- 将设备连接至 Wi-Fi 网络。

## 更新过程:



### 步骤 1: 下载最新固件

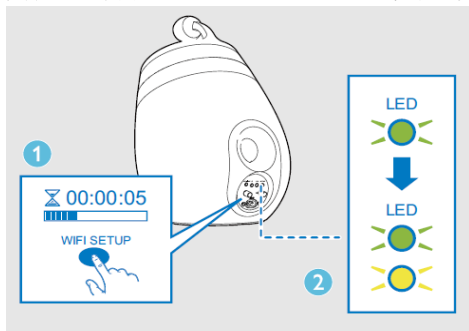
1. 单击屏幕顶部的“下载”图标以将新的固件包下载到计算机上。



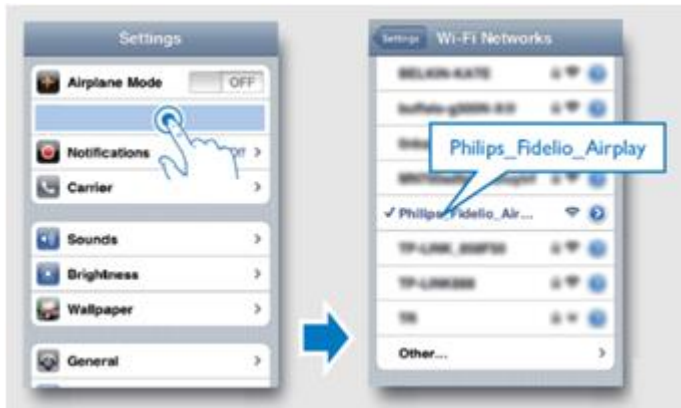
**注意:** 请勿重命名文件夹名称或文件夹中的文件名，以免更新损坏。

### 步骤 2: 通过电脑更新播放机

1. 打开扬声器，如果您听到哔声或发现 LED 呈绿色亮起，请直接转到**第 10 点**。否则，请转到第 2 点。
2. 按住主扬声器背面的 WiFi SETUP（WiFi 设置）5 秒以上，以使设备可被 iPhone、iPad 和 iPod 发现。
3. 扬声器背面的 LED 以绿色和黄色交替闪烁。

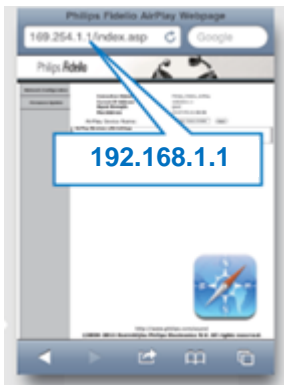


4. 在 iPhone、iPad、iPod touch 或 Mac 设备上，通过 SSID **Philips\_Fidelio\_Airplay** 连接至 Wi-Fi 网络:



5. 要检查是否成功，请在连接的 Apple 设备的 Web 浏览器中输入 192.168.1.1，以访问 Fidelio 页面。如果失败，请重复 1-3 点。

Fidelio 页面:



6. 在 **Network Configuration**（网络配置）部分，从“Service Set ID (SSID)”（服务设置 ID）下拉列表中选择您的路由器 SSID。



7. 输入正确的网络密钥后（如果必要），请选择“**Apply**”（应用）。
8. 单击“**OK**”（确定）确认。



9. 1 分钟内，您将听到哔声或发现 LED 呈绿色亮起。如果失败，请从第 2 点重新开始。

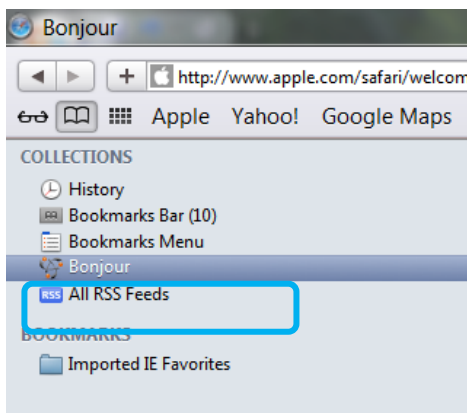
### 在电脑上

10. 将在“步骤 1 下载最新固件”中下载的文件解压缩到电脑。

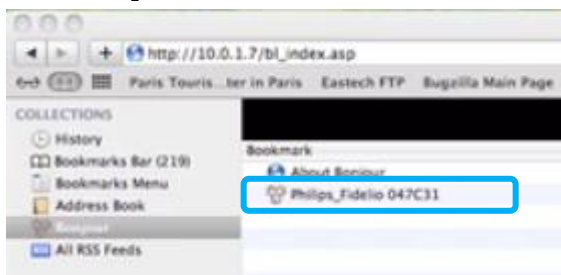
11. 启动电脑上的 **Safari** 浏览器。

**注意：确保您的电脑和扬声器处于相同的网络。**

12. 单击 Safari 书签栏上的打开书本图标 ，然后选择 Collections（收藏）列表中的 **Bonjour**。



13. 单击 **Philips\_Fidelio XXXXXX**。



14. 飞利浦 Fidelio Airplay 网页将打开。请勿单击任何地方。



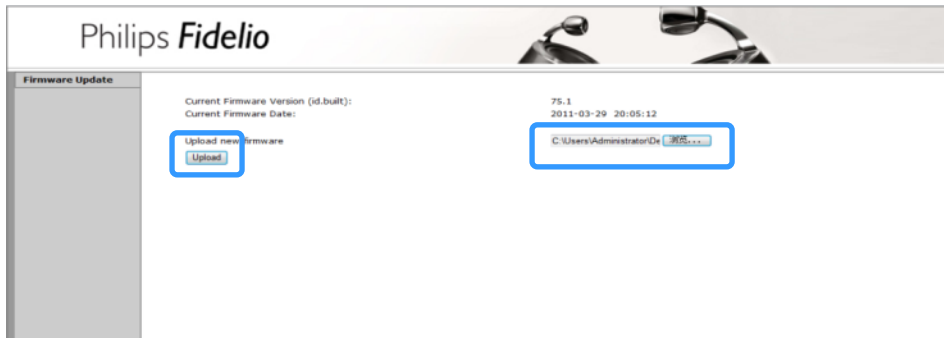
15. 等到以下页面（飞利浦 Fidelio Airplay 更新页面）打开。

注意：如果环境中存在太多干扰，在网页刷新之前，可能会出现延迟。刷新可能需要 5 分钟时间。



16. 单击 Choose file（选择文件）。

浏览解压缩的 .bcd 文件（在“步骤 1 下载最新固件”中下载），然后单击“Upload”（上载）



17. 检查当前及新固件版本，然后单击“OK”（确定）继续



18. 完成后，将显示消息“Upload process finished successfully”（上载过程已成功完成）。

### 步骤 3：确认更新成功

1. 在连接的 Apple 设备的 Web 浏览器中访问 192.168.1.1
2. 重复步骤 2，11-15 点，以检查当前固件和新固件是否相同。
3. 如果未安装最新固件，请重复“步骤 2 通过电脑更新播放机”和“步骤 3 确认更新成功”。