

# Always there to help you

Register your product and get support at  
[www.philips.com/welcome](http://www.philips.com/welcome)



DS3205



## User manual

# PHILIPS



# Contents

---

<b>1</b>	<b>Important</b>	<b>2</b>
	Safety	2

---

<b>2</b>	<b>Your Docking Speaker</b>	<b>3</b>
	Introduction	3
	What's in the box	3
	Overview of the main unit	3

---

<b>3</b>	<b>Get started</b>	<b>4</b>
	Connect power	4
	Turn on	5

---

<b>4</b>	<b>Play</b>	<b>6</b>
	Play from iPod/iPhone	6
	Play from an external device	6
	Adjust volume	7

---

<b>5</b>	<b>Product information</b>	<b>8</b>
	Specifications	8

---

<b>6</b>	<b>Troubleshooting</b>	<b>9</b>
----------	------------------------	----------

---

<b>7</b>	<b>Notice</b>	<b>10</b>
----------	---------------	-----------

# 1 Important

## Safety

### Important Safety Instructions

- Heed all warnings.
- Follow all instructions.
- Do not use this apparatus near water.
- Clean only with dry cloth.
- Do not block any ventilation openings. Install in accordance with the manufacturer's instructions.
- Do not install near any heat sources such as radiators, heat registers, stoves, or other apparatus (including amplifiers) that produce heat.
- Protect the power cord from being walked on or pinched, particularly at plugs, convenience receptacles, and the point where they exit from the apparatus.
- Only use attachments/accessories specified by the manufacturer.
- Unplug this apparatus during lightning storms or when unused for long periods of time.
- Refer all servicing to qualified service personnel. Servicing is required when the apparatus has been damaged in any way, such as power-supply cord or plug is damaged, liquid has been spilled or objects have fallen into the apparatus, the apparatus has been exposed to rain or moisture, does not operate normally, or has been dropped.
- Battery usage CAUTION – To prevent battery leakage which may result in bodily injury, property damage, or damage to the unit:
  - Install all batteries correctly, + and - as marked on the unit.
- Do not mix batteries (old and new or carbon and alkaline, etc.).
- Batteries (battery pack or batteries installed) shall not be exposed to excessive heat such as sunshine, fire or the like.
- Remove batteries when the unit is not used for a long time.
- Apparatus shall not be exposed to dripping or splashing.
- Do not place any sources of danger on the apparatus (e.g. liquid filled objects, lighted candles).
- Where the plug of the Direct Plug-in Adapter is used as the disconnect device, the disconnect device shall remain readily operable.
- Use only power supplies listed in the user manual.



### Warning

- Never remove the casing of this apparatus.
- Never lubricate any part of this apparatus.
- Never place this apparatus on other electrical equipment.
- Keep this apparatus away from direct sunlight, naked flames or heat.
- Make sure that you always have easy access to the power cord, plug, or adaptor to disconnect the apparatus from the power.

## 2 Your Docking Speaker

Congratulations on your purchase, and welcome to Philips! To fully benefit from the support that Philips offers, register your product at [www.philips.com/welcome](http://www.philips.com/welcome).

### Introduction

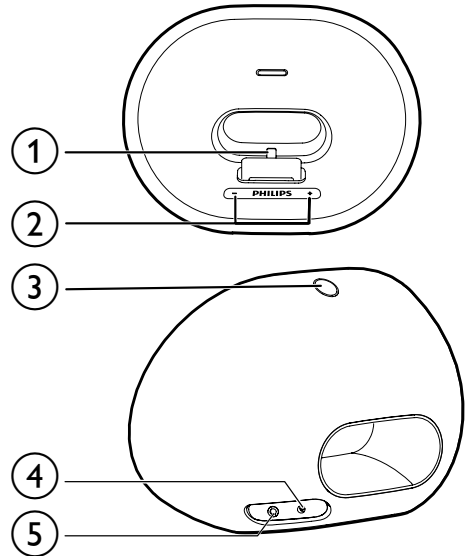
With this docking speaker, you can enjoy audio from your iPod/iPhone or other audio devices.

### What's in the box

Check and identify the contents of your package:

- Main unit
- 1 × AC adaptor
- Short user manual
- Safety and notice

### Overview of the main unit



① **Dock for iPod/iPhone**

② **+ / -**

- Adjust volume.

③ **⏻**

- Turn the unit on or off.
- Switch the unit to standby mode.

④ **AUDIO IN**

- Connect an external audio device.

⑤ **DC IN**

- Connect AC power.

# 3 Get started

Always follow the instructions in this chapter in sequence.

If you contact Philips, you will be asked for the model and serial number of this apparatus. The model number and serial number are on the bottom of the apparatus. Write the numbers here:

Model No. \_\_\_\_\_

Serial No. \_\_\_\_\_

---

## Connect power

This docking speaker can be powered on by either AC power or batteries.

---

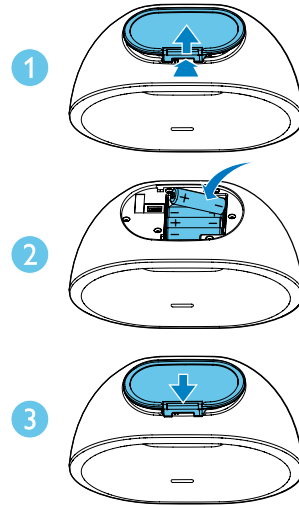
### Battery power

#### Caution

- Risk of explosion! Keep batteries away from heat, sunshine or fire. Never discard batteries in fire.
- Batteries contain chemical substances, so they should be disposed of properly.
- Danger of explosion if battery is incorrectly replaced. Replace only with the same or equivalent type.

- 1 Open the battery compartment.
- 2 Insert 4 × 1.5V AA batteries (not supplied) with correct polarity (+/-) as indicated.

- 3 Close the battery compartment.

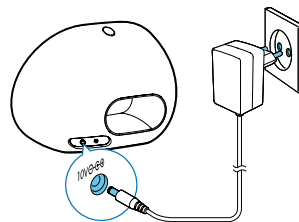


---

### AC power

#### Caution

- Risk of product damage! Make sure that the power supply voltage corresponds to the voltage printed on the back of the unit.
- Risk of electric shock! When you unplug the AC adaptor, always pull the plug from the socket. Never pull the cord.
- Before connecting the AC adaptor, make sure that you have completed all other connections.

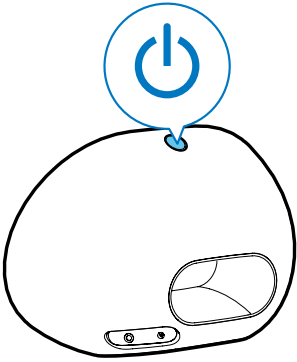


---

## Turn on

Press  $\phi$  to turn the docking speaker on.

↳ The + / - LED indicators light up.



---

## Switch to standby mode

The docking speaker switches to standby mode in following situations:

- Press  $\phi$  again;
  - The speaker is idle for 15 minutes when powered by AC supply.
  - The iPod/iPhone or external audio device is disconnected when the speaker is operated on batteries.
- ↳ The + / - LED indicators light off.

# 4 Play

## Play from iPod/iPhone

You can enjoy audio from iPod/iPhone through this docking speaker.

### Compatible iPod/iPhone

The docking speaker supports the following iPod/iPhone models.

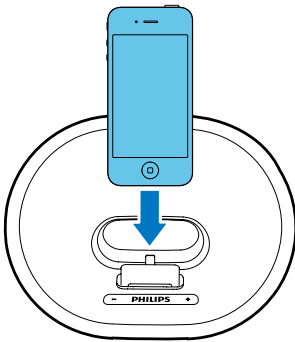
Made for:

- iPhone 5
- iPod nano (7th generation)
- iPod touch (5th generation)

### Load the iPod/iPhone

Insert your iPod/iPhone into the dock.

- ↳ The docking system switches to Dock source automatically.



### To remove the iPod/iPhone:

- Pull your iPod/iPhone out of the dock.

## Listen to the iPod/iPhone

### Note

- Make sure that the iPod/iPhone is loaded correctly.

Start to play music from your iPod/iPhone.

- ↳ Music streams from the docking speaker automatically.

## Charge the iPod/iPhone

The docked iPod/iPhone begins to charge automatically after connected to AC power.

### Note

- You cannot charge your iPod/iPhone when the docking speaker is powered on by batteries.

## Play from an external device

With this docking speaker, you can also enjoy audio from an external device such as an MP3 player.

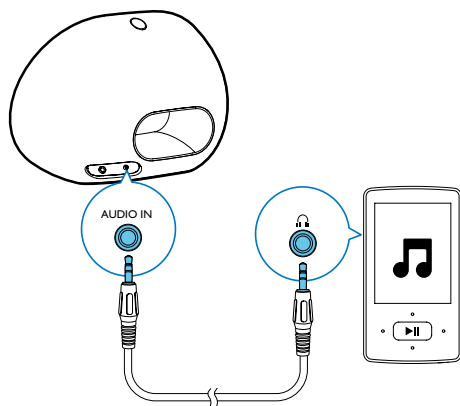
### Note

- Make sure that no iPod/iPhone is docked in the speaker.

- 1 If no iPod/iPhone is docked, connect an MP3 link cable (3.5mm, not supplied) to:
  - the **AUDIO IN** socket at the back of the docking speaker.
  - the headphone socket on an external device.↳ The docking speaker switches to MP3 link mode automatically.



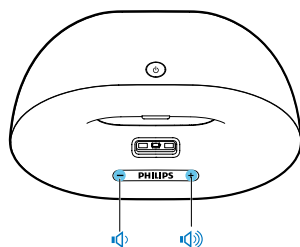
- 2 Play music on the device (see the device's user manual).



---

## Adjust volume

During play, press +/- repeatedly to increase or decrease the volume.



# 5 Product information

## Note

- Product information is subject to change without prior notice.

## Specifications

### Amplifier

Rated Output Power	2 x 5 W RMS
Signal to Noise Ratio	85 dB

### General information

AC/DC switching adapter	Model: OH-1018A1002000U-VDE (Philips) Input: 100-240 V~, 50/60 Hz, 650 mA; Output: 10 V = 2 A
Batteries	4 x AA batteries
Operation Power Consumption	18 W
Dimensions: Main Unit (W x H x D)	224 x 162 x 120 mm
Weight: Main Unit	1.1 kg

# 6 Troubleshooting



## Warning

- Never remove the casing of this device.

To keep the warranty valid, never try to repair the system yourself.

If you encounter problems when using this device, check the following points before requesting service. If the problem remains unsolved, go to the Philips Web page ([www.philips.com/support](http://www.philips.com/support)). When you contact Philips, make sure that the device is nearby and the model number and serial number are available.

### No power

- Make sure that the AC power plug of the unit is connected properly.
- Make sure that there is power at the AC outlet.

### No sound or poor sound

- Adjust the volume of your docking speaker.
- Adjust the volume of your iPod/iPhone or external audio device.

### No response from the unit

- Disconnect and reconnect the AC power plug, and then turn on the docking speaker again.

# 7 Notice

Any changes or modifications made to this device that are not expressly approved by WOOX Innovations may void the user's authority to operate the equipment.



This product complies with the radio interference requirements of the European Community.



Your product is designed and manufactured with high quality materials and components, which can be recycled and reused.



When this crossed-out wheeled bin symbol is attached to a product it means that the product is covered by the European Directive 2002/96/EC.

Please inform yourself about the local separate collection system for electrical and electronic products.

Please act according to your local rules and do not dispose of your old products with your normal household waste. Correct disposal of your old product helps to prevent potential negative consequences for the environment and human health.



Your product contains batteries covered by the European Directive 2006/66/EC, which cannot be disposed with normal household waste. Please inform yourself about the local rules on separate collection of batteries

because correct disposal helps to prevent negative consequences for the environmental and human health.

## Environmental information

All unnecessary packaging has been omitted. We have tried to make the packaging easy to separate into three materials: cardboard (box), polystyrene foam (buffer) and polyethylene (bags, protective foam sheet.)

Your system consists of materials which can be recycled and reused if disassembled by a specialized company. Please observe the local regulations regarding the disposal of packaging materials, exhausted batteries and old equipment.



The making of unauthorized copies of copy-protected material, including computer programs, files, broadcasts and sound recordings, may be an infringement of copyrights and constitute a criminal offence. This equipment should not be used for such purposes.



"Made for iPod" and "Made for iPhone" mean that an electronic accessory has been designed to connect specifically to iPod or iPhone respectively, and has been certified by the developer to meet Apple performance standards. Apple is not responsible for the operation of this device or its compliance with safety and regulatory standards. Please note that the use of this accessory with iPod or iPhone may affect wireless performance. iPod and iPhone are trademarks of Apple Inc., registered in the U.S. and other countries.



- The type plate is located on the bottom of the apparatus.



Specifications are subject to change without notice  
2013 © WOOX Innovations Limited. All rights reserved.  
This product was brought to the market by WOOX  
Innovations Limited or one of its affiliates, further referred  
to in this document as WOOX Innovations, and is the  
manufacturer of the product. WOOX Innovations is the  
warrantor in relation to the product with which this booklet  
was packaged. Philips and the Philips Shield Emblem are  
registered trademarks of Koninklijke Philips N.V.

