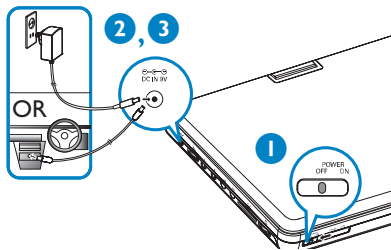


Quick start guide

1 Charge

This portable DVD player is designed with a built-in lithium battery to supply power to the player when you are on travel.

- 1 Slide the **POWER** switch to the **OFF** position.
- 2 Connect the supplied power adaptor cord (or the car adaptor) to the player and AC mains (or the car cigarette lighter outlet) to start charging.
→ The **CHG** indicator turns on.
- 3 Disconnect the power adaptor cord (or the car adaptor) when the CHG indicator turns off.

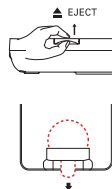


Notes:

– You can also connect the supplied power adaptor cord (or the car adaptor) to the player and AC mains (or the car cigarette lighter outlet) directly wherever possible.
– Before using the DVD player for the first time, make sure to charge the battery for 8 hours at least.

2 Prepare your remote control

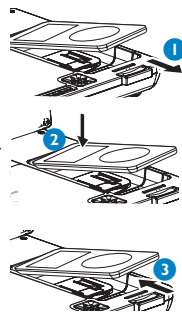
- 1 Lift up the handle marked ▲ **EJECT** to take out the remote control.
- 2 Remove the protective plastic tab (first time users only).
→ Your remote control is now ready for use.



3 Enjoy (iPod with video)

Connecting and using your iPod player

- 1 Pull out the iPod connector.
- 2 Dock your iPod player with the **top entering first as shown.**
- 3 Push in the iPod connector.
- 4 Switch on your iPod player to set "TV OUT" to "ON" and select the "NTSC" mode. (See your iPod user's manual for detailed operation.)



- 5 Press the **SOURCE** key repeatedly (or **DOCK** on the remote) for dock input.

- 6 Play files in your iPod player.

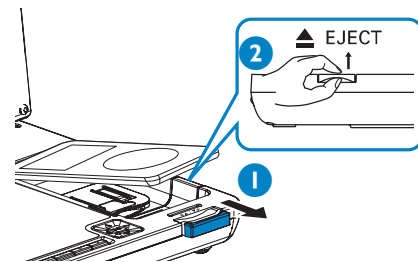
● To recharge your iPod player:

Case 1: In the power-off mode, you just need to connect the DVD player to AC mains or the car cigarette lighter outlet.

Case 2: In the power-on mode, make sure the current source of the DVD player is "DOCK" before proceeding as described in case 1.

To remove the iPod player

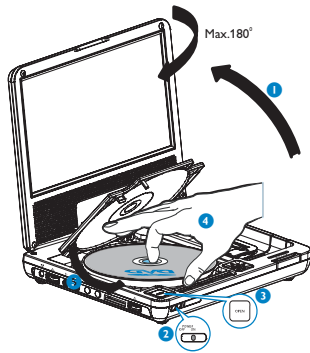
- 1 Pull out the iPod connector.
- 2 Lift up the handle marked ▲ **EJECT** to release.



Notes:

– This DVD player only supports 30G, 60G and 80G iPod player with video.
– Please take out the tab marked "for 30G iPod" in the dock if you want to dock a 60G or 80G iPod player.
– You need to press **▶** on your iPod player in order to start photo playback through this DVD player.

3 Enjoy (Disc operation)

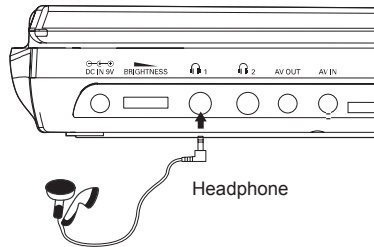


- 1 Open the lid of the player and adjust the swivel screen clockwise to your preferred viewing angle.
- 2 Slide the **POWER** switch to **ON** to switch on the DVD player.
→ The **POWER** indicator turns on.
- 3 Press **OPEN** to open the disc door.
- 4 Remove the protective card (if any) and load a disc with the label side facing up.
- 5 Close the disc door. Playback will start automatically. If not, press **▶**.
- 6 To stop playback, press **■** on the remote control.

3 Enjoy (Other options)

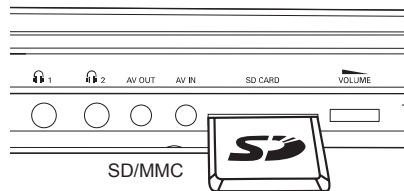
Connecting headphones (not included)

- To enjoy your portable DVD player without disturbing others, you can connect one or more headphones to the **1** or (and) **2** jack on the set.



Connecting an SD/MMC card

- 1 Insert an SD/MMC card into the **SD CARD** slot with the metal contact facing down.
- 2 On the DVD player panel, press the source key repeatedly (or **SD/MMC CARD** on the remote).
- 3 Play video or audio files stored in the card by selecting the desired file with **▲ ▼** and **OK**.



Connecting additional equipment (TV for example)

- 1 Connect the AV OUT socket on the set to the video and audio sockets on a TV as shown directly.
- 2 Switch on the TV and set to the correct video-in channel.
→ You can consult the owner's manual of your TV. (If your TV does not have Audio and Video inputs, you will need to purchase a RF modulator. Please consult your dealer.)

TIP:

– When connecting a device to the AV IN socket on the DVD player, you need to press the source key repeatedly on the front panel (or AV on the remote) to select A/V IN (AUX).

