

Register your product and get support at
www.philips.com/welcome

DCM3020



User manual

PHILIPS

Contents

1 Important	2	7 Other features	15
Safety	2	Set the sleep timer	15
		Set the alarm timer	15
		Play from external audio device	15
		Adjust display brightness	15

2 Your Micro System	4	8 Product information	16
Introduction	4	Specifications	16
What's in the box	4	USB playability information	16
Overview of the main unit	5	Supported MP3 disc formats	17
Overview of the remote control	8	Maintenance	17

3 Get started	9	9 Troubleshooting	17
Connect speakers	9		
Connect FM antenna	9		
Connect power	9		
Demonstrate the features	10		
Prepare the remote control	10		
Set clock	10		
Turn on	10		

4 Play	11	10 Notice	18
Play a disc	11		
Play from USB	11		
Play iPod/iPhone/iPad	11		
Listen to radio	12		

5 Play options	13		
Pause/resume play	13		
Skip to a track	13		
Search within a track	13		
Program tracks	13		
Display time	14		
Select repeat/shuffle play options	14		

6 Adjust sound	14		
Adjust volume	14		
Select a preset sound effect	14		
Enhance bass	14		
Mute sound	14		

1 Important

Safety



This 'bolt of lightning' indicates uninsulated material within your unit may cause an electrical shock. For the safety of everyone in your household, please do not remove product covering.

The 'exclamation point' calls attention to features for which you should read the enclosed literature closely to prevent operating and maintenance problems.

WARNING: To reduce the risk of fire or electric shock, this apparatus should not be exposed to rain or moisture and objects filled with liquids, such as vases, should not be placed on this apparatus.

CAUTION: To prevent electric shock, match wide blade of plug to wide slot, fully insert.

Important Safety Instructions

- Follow all instructions.
- Heed all warnings.
- Do not use this apparatus near water.
- Clean only with dry cloth.
- Do not block any ventilation openings. Install in accordance with the manufacturer's instructions.
- Do not install near any heat sources such as radiators, heat registers, stoves, or other apparatus (including amplifiers) that produce heat.
- Protect the power cord from being walked on or pinched, particularly at plugs, convenience receptacles, and the point where they exit from the apparatus.
- Only use attachments/accessories specified by the manufacturer.
- Use only with the cart, stand, tripod, bracket, or table specified by the manufacturer or sold with the apparatus. When a cart is used, use caution when moving the cart/apparatus combination to avoid injury from tip-over.



- Unplug this apparatus during lightning storms or when unused for long periods of time.
- Refer all servicing to qualified service personnel. Servicing is required when the apparatus has been damaged in any way, such as power-supply cord or plug is damaged, liquid has been spilled or objects have fallen into the apparatus, the apparatus has been exposed to rain or moisture, does not operate normally, or has been dropped.
- Battery usage **CAUTION** – To prevent battery leakage which may result in bodily injury, property damage, or damage to the unit:
 - Install all batteries correctly, + and - as marked on the unit.
 - Do not mix batteries (old and new or carbon and alkaline, etc.).
 - Remove batteries when the unit is not used for a long time.
- Apparatus shall not be exposed to dripping or splashing.

- Do not place any sources of danger on the apparatus (e.g. liquid filled objects, lighted candles).
- Where the MAINS plug or an appliance coupler is used as the disconnect device, the disconnect device shall remain readily operable.



Warning

- Never remove the casing of this apparatus.
- Never lubricate any part of this apparatus.
- Never place this apparatus on other electrical equipment.
- Keep this apparatus away from direct sunlight, naked flames or heat.
- Never look into the laser beam inside this apparatus.
- Ensure that you always have easy access to the power cord, plug or adaptor to disconnect this apparatus from the power.

Hearing safety

Listen at a moderate volume.

- Using headphones at a high volume can impair your hearing. This product can produce sounds in decibel ranges that may cause hearing loss for a normal person, even for exposure less than a minute. The higher decibel ranges are offered for those that may have already experienced some hearing loss.
- Sound can be deceiving. Over time your hearing 'comfort level' adapts to higher volumes of sound. So after prolonged listening, what sounds 'normal' can actually be loud and harmful to your hearing. To guard against this, set your volume to a safe level before your hearing adapts and leave it there.

To establish a safe volume level:

- Set your volume control at a low setting.
- Slowly increase the sound until you can hear it comfortably and clearly, without distortion.

Listen for reasonable periods of time:

- Prolonged exposure to sound, even at normally 'safe' levels, can also cause hearing loss.
- Be sure to use your equipment reasonably and take appropriate breaks.

Be sure to observe the following guidelines when using your headphones.

- Listen at reasonable volumes for reasonable periods of time.
- Be careful not to adjust the volume as your hearing adapts.
- Do not turn up the volume so high that you can't hear what's around you.
- You should use caution or temporarily discontinue use in potentially hazardous situations. Do not use headphones while operating a motorized vehicle, cycling, skateboarding, etc.; it may create a traffic hazard and is illegal in many areas.

2 Your Micro System

Congratulations on your purchase, and welcome to Philips! To fully benefit from the support that Philips offers, register your product at www.philips.com/welcome.

Introduction

With this unit, you can enjoy audio from disc, USB devices, iPod players, iPhone and other external devices, or listen to radio stations.

The unit offers Digital Sound Control (DSC) and Dynamic Bass Boost (DBB).

The unit supports the following media formats:



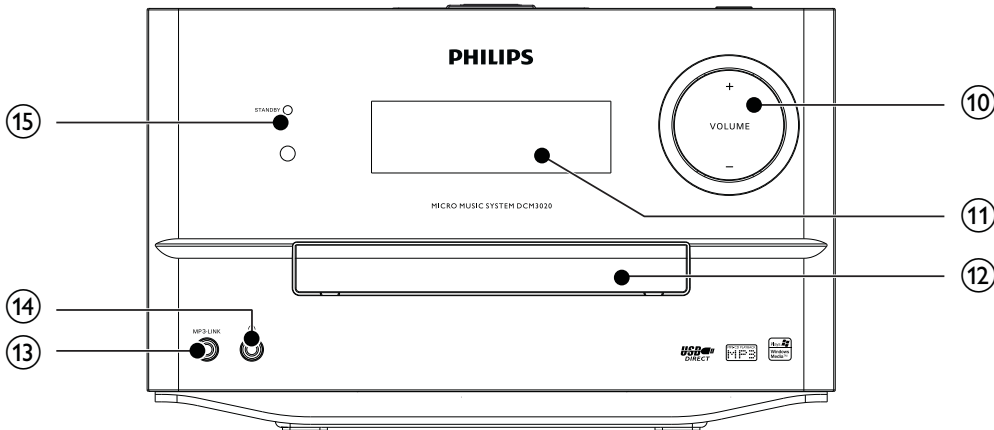
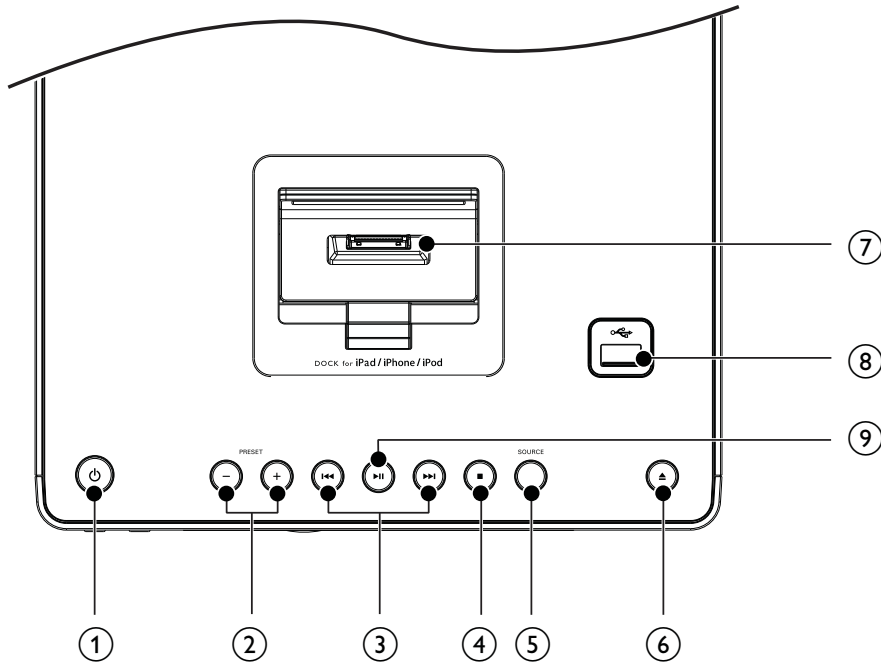
What's in the box

Check and identify the contents of your package:

- Main unit
- 2 x speakers
- Remote control (without battery)
- Power cord
- Round to flat adaptor
- FM antenna
- MP3 link cable
- 8 x rubber cushions
- Quick start guide
- User manual






Overview of the main unit

Top and front view

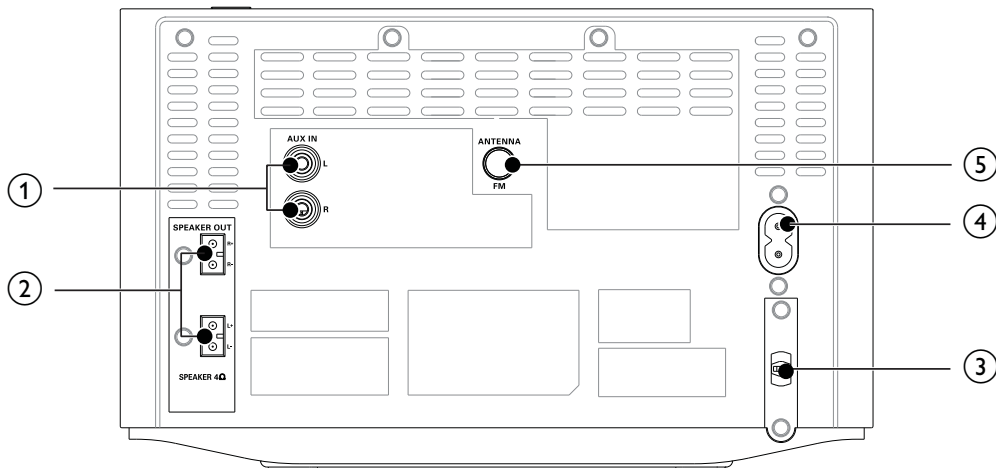


- ① **⏻**
 - Turn on the unit, or switch to standby mode.
- ② **PRESET +/-**
 - Select a preset radio station.
 - Skip to the previous/next album.

- ③ **⏮ / ⏭**
 - Skip to the previous/next track.
 - Search within a track/disc/USB.
 - Tune to a radio station.
 - Navigate through iPod/iPhone/iPad menu.
 - Adjust time.

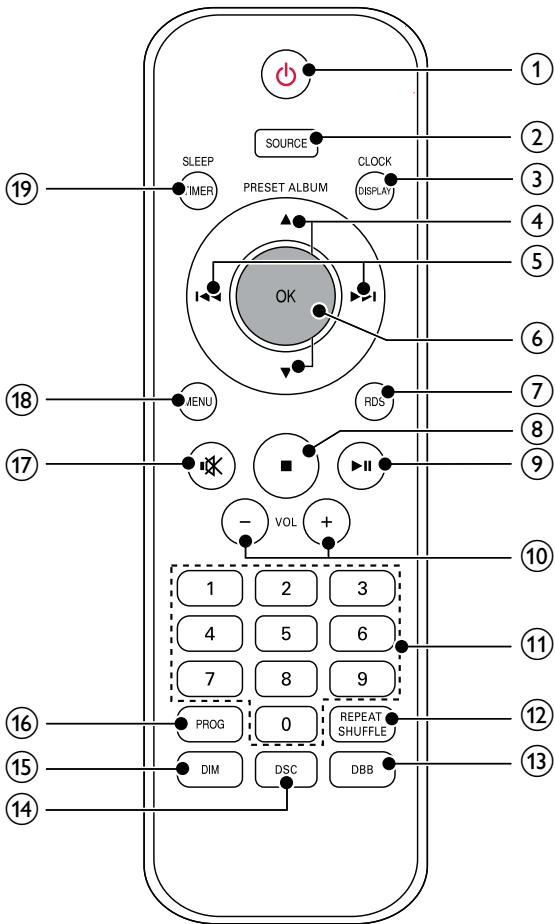
- ④ 
 - Stop play.
 - Erase a program.
- ⑤ **SOURCE**
 - Select a source: CD, FM TUNER, USB, DOCK, AUX IN, or MP3 LINK.
- ⑥ 
 - Open/close the disc compartment.
- ⑦ **Dock for iPod/iPhone/iPad**
- ⑧ 
 - USB socket.
- ⑨ 
 - Start or pause play.
- ⑩ **VOLUME + / -**
 - Adjust volume.
- ⑪ **Display panel**
 - Show current status.
- ⑫ **Disc compartment**
- ⑬ **MP3-LINK**
 - Connect external audio device.
- ⑭ 
 - Headphone socket.
- ⑮ **STANDBY**
 - Standby mode indicator.

Back view



- ① **AUX IN**
 - Connect an external audio device.
- ② **SPEAKER OUT**
 - Connect the speakers.
- ③ **Voltage selector**
 - select suitable voltage
- ④ **AC MAIN~**
 - Power supply socket.
- ⑤ **FM ANTENNA**
 - Improve FM reception.

Overview of the remote control



- ① **⏻**
 - Turn on the unit, or switch to standby mode, or switch to Eco Power standby.
- ② **SOURCE**
 - Select a source: CD, FM TUNER, USB, DOCK, AUX-IN, or MP3 LINK.
- ③ **DISPLAY**
 - Select display information during play.
- ④ **PRESET/ALBUM ▲ / ▼**
 - Skip to the previous/next album.
 - Select a preset radio station.
- ⑤ **⏮ / ⏭**
 - Skip to the previous/next track.
 - Tune to a radio station.

- Search within a track/disc/USB.
- Navigate through iPod/iPhone/iPad menu.
- Adjust time.
- ⑥ **OK**
 - Confirm a selection.
- ⑦ **RDS**
 - For selected FM radio stations: display RDS information.
- ⑧ **■**
 - Stop play or erase a program.
- ⑨ **▶ ||**
 - Start or pause play.
- ⑩ **VOL -/+**
 - Adjust volume.
- ⑪ **Numeric keypad**
 - Select a track from a disc directly.
 - Select a preset radio station.
- ⑫ **REPEAT/SHUFFLE**
 - Play a track or all tracks repeatedly.
 - Play tracks randomly.
- ⑬ **DBB**
 - Turn on/off dynamic bass enhancement.
- ⑭ **DSC**
 - Select a preset sound setting.
- ⑮ **DIM**
 - Adjust brightness of display panel.
 - Turn off LED light around VOLUME knob.
- ⑯ **PROG**
 - Program tracks.
 - Program radio stations.
- ⑰ **🔇**
 - Mute or restore volume.
- ⑱ **MENU**
 - Access iPod/iPhone/iPad menu.
- ⑲ **SLEEP/TIMER**
 - Set the sleep timer.
 - Set the alarm timer.

3 Get started

! Caution

- Use of controls or adjustments or performance of procedures other than herein may result in hazardous radiation exposure or other unsafe operation.

Always follow the instructions in this chapter in sequence.

If you contact Philips, you will be asked for the model and serial number of this apparatus. The model number and serial number are on the bottom of the apparatus. Write the numbers here:

Model No. _____

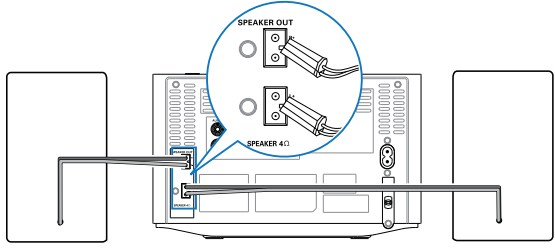
Serial No. _____

Connect speakers

≡ Note

- For optimal sound, use the supplied speakers only.
- Connect only speakers with impedance that is the same or higher than the supplied speakers. Refer to the Specifications section of this manual.

Insert the speaker wires completely into the speaker input sockets on the back of the unit.



Connect FM antenna

*** Tip**

- For optimal reception, fully extend and adjust the position of the antenna.

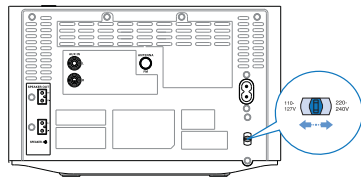
Connect the supplied FM antenna to the **FM ANTENNA** jack on the main unit.

Connect power

! Caution

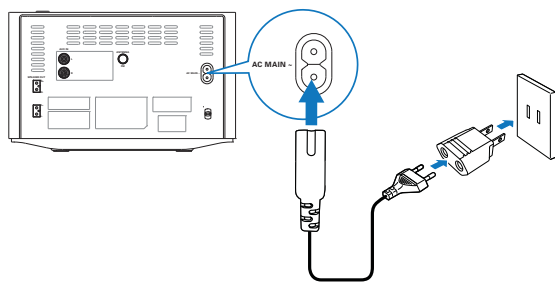
- Risk of product damage! Ensure that the power voltage corresponds to the voltage printed on the back or underside of the apparatus.
- Risk of electric shock! When you unplug the AC adaptor, always pull the plug from the socket. Never pull the cord.
- Before connecting the AC adaptor, ensure you have completed all other connections.

1 Switch the voltage selector on the back of the unit to the local power line voltage.



2 Connect the power adaptor to:

- the **AC MAIN~** jack on the main unit.
- the wall outlet.



Demonstrate the features

- 1 After connecting the power, the micro music system starts to demonstrate features automatically.
 - 2 In the standby mode, you also can demonstrate features by pressing **■** until "DEMO ON" is displayed.
 - ↳ The features are displayed one by one across the display panel.
- To turn off the demonstration, press **■** again.

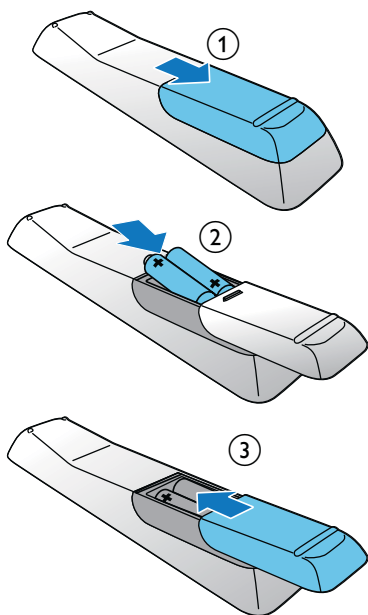
Prepare the remote control

! Caution

- Risk of explosion! Keep batteries away from heat, sunshine or fire. Never discard batteries in fire.
- Risk of decreased battery life! Never mix different brands or types of batteries.
- Risk of product damage! When the remote control is not used for long periods, remove the batteries.

To insert the remote control battery:

- 1 Open the battery compartment.
- 2 Insert 2 AAA batteries (not supplied) with correct polarity (+/-) as indicated.
- 3 Close the battery compartment.



Set clock

- 1 In standby mode, press and hold **CLOCK/DISPLAY** on the remote control to activate the clock setting mode.
 - ↳ The hour digits are displayed and begin to blink.
- 2 Press **◀▶** to set the hour, and press **CLOCK/DISPLAY**.
 - ↳ The minute digits are displayed and begin to blink.
- 3 Repeat step 2 to set the minute.

Turn on

Press **⏻**.

- ↳ The unit switches to the last selected source.

Switch to standby

Press **⏻** again to switch the unit to standby mode.

- ↳ The clock (if set) appears on the display panel.

Switch to ECO standby mode:

Press and hold **⏻** for more than 3 seconds.

- ↳ [ECO STANDBY] (Eco standby) is displayed for 3 seconds and then disappeared.

✪ Tip

- The unit switches to Eco Power Standby mode after 15 minutes in standby mode.

Switch between standby mode and ECO standby mode:

Press and hold **⏻** for more than 2 seconds.

4 Play

Play a disc

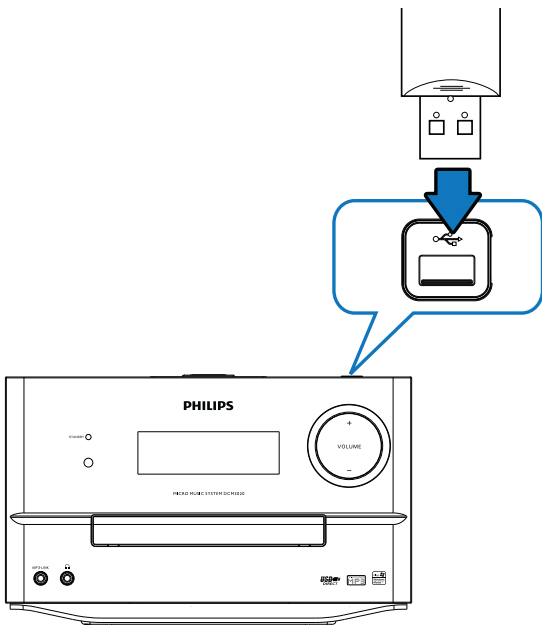
- 1 Press **SOURCE** repeatedly to select CD source.
- 2 Press **▲** to open the disc compartment.
- 3 Insert a disc with the printed side facing upward.
- 4 Press **▲** to close the disc compartment.
- 5 Play starts automatically. If not, press **▶||**.

Play from USB

Note

- Ensure that the USB device contains playable audio content.

- 1 Insert the USB device into the  socket.



- 2 Press **SOURCE** repeatedly to select the USB source.

↳ Play starts automatically. If not, press **▶||**.

- To select a folder, press **PRESET +/-**.
- To select an audio file, press **◀◀ / ▶▶**.

Play iPod/iPhone/iPad

When the iPod/iPhone/iPad is docked on this Micro System, you can listen to music from the speakers.

Note

- No audio output from the headphone jack in this situation.

Compatible iPod/iPhone/iPad

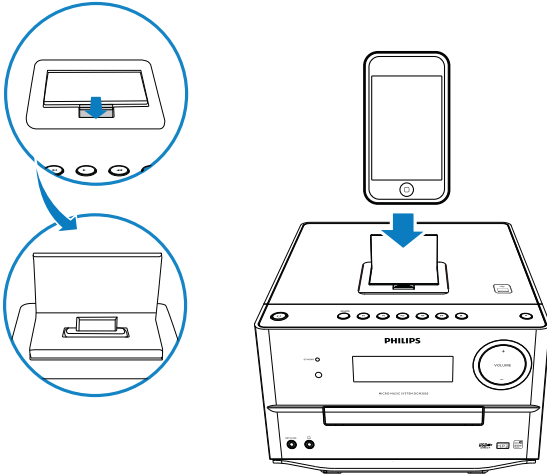
Apple iPod, iPhone and iPad models with a 30-pin dock connector:

- iPod classic, iPod touch, iPod nano, iPod 5th generation (video), iPod with color display, iPod mini.
- iPhone, iPhone 3G, iPhone 3GS, iPhone 4.
- iPad (WiFi), iPad (3G).

Play an iPod/iPhone/iPad

Note

- When an iPod/iPhone/iPad player is loaded, the unit switches to iPod source automatically.



- 1 Push to open the dock compartment.
- 2 Place the iPod/iPhone/iPad player in the dock. Press **SOURCE** repeatedly to select **DOCK** source.
 - ↳ The connected iPod/iPhone/iPad plays automatically.
 - To pause/resume play, press **▶||**.
 - To skip to a track, press **◀◀ / ▶▶**.
 - To search during play, press and hold **◀◀ / ▶▶**, then release to resume normal play.

Charge the iPod/iPhone/iPad

Note

- iPod with color display, iPod classic, and iPod with video are not compatible with dock charging.

When the unit is connected to power, the docked iPod/iPhone/iPad begins to charge.

Listen to radio

Tune to a radio station

- 1 Press **SOURCE** repeatedly to select the tuner source.

- 2 Press and hold **◀◀ / ▶▶** for more than 2 seconds.
 - ↳ **[SEARCH]** (search) is displayed.
 - ↳ The radio tunes to a station with strong reception automatically.
- 3 Repeat step 2 to tune to more stations.

Tip

- To tune to a weak station, press **◀◀ / ▶▶** repeatedly until you find optimal reception.

Program radio stations automatically

You can program a maximum of 20 preset radio stations (FM).

In the tuner mode, press and hold **PROG** for more than 2 seconds to activate automatic program mode.

- ↳ **AUTO SCAN** (auto scan) is displayed.
- ↳ All available stations are programmed in the order of waveband reception strength.
- ↳ The first programmed radio station is broadcast automatically.

Program radio stations manually

You can program a maximum of 20 preset radio stations (FM).

- 1 Tune to a radio station.
- 2 Press **PROG** to activate program mode.
 - ↳ **[PROG]** (program) is displayed.
- 3 Press **PRESET +/-** to allocate a number to this radio station, then press **PROG** to confirm.
- 4 Repeat the above steps to program other stations.

Tip

- To overwrite a programmed station, store another station in its place.

Select a preset radio station

In tuner mode, press **PRESET +/-** to select a preset number.

- You can also press the numeric buttons to select a preset number directly.



Tip

- Position the antenna as far as possible from TV, VCR or other radiation source.
- For optimal reception, fully extend and adjust the position of the antenna.

Show RDS information

RDS (Radio Data System) is a service that allows FM stations to show additional information. If you tune to an RDS station, an RDS icon and the station name are displayed.

- 1 Tune to an RDS station.
- 2 Press **RDS** repeatedly to scroll through the following information (if available):
 - ↳ Station name
 - ↳ Program type such as **[NEWS]** (news), **[SPORT]** (sport), **[POP M]** (pop music)...
 - ↳ RDS RT
 - ↳ Frequency

5 Play options

Pause/resume play

During play, press **▶||** to pause/resume play.

Skip to a track

For **CD**:

Press **◀◀ / ▶▶** to select another track.

- To select a track directly, you can also press a key on the numerical keypad.

For **MP3 disc and USB**:

- 1 Press **PRESET +/-** to select an album or a folder.
- 2 Press **◀◀ / ▶▶** to select a track or a file.

Search within a track

- 1 During play, press and hold **◀◀ / ▶▶**.
- 2 Release to resume normal play.

Program tracks



Note

- You can program tracks only when the play stops.

You can program a maximum of 20 tracks.

- 1 Press **PROG** to activate the program mode.
 - ↳ **[PROG]** (program) is displayed.
- 2 For MP3/WMA tracks, press **PRESET +/-** to select an album.
- 3 Press **◀◀ / ▶▶** to select a track, then press **PROG** to confirm.

- 4 Repeat steps 2 to 3 to program more tracks.
- 5 Press ►|| to play the programmed tracks.
 - ↳ During play, [PROG] (program) is displayed.
 - To erase the program, in the stop position, press ■.

Display time

Press **DISPLAY** to display time.



Tip

- In Eco Standby mode, time is displayed for 15 minutes.

Select repeat/shuffle play options

- 1 During play, press **REPEAT/SHUFFLE** repeatedly to select a repeat option or the shuffle play mode.
 - **REP** (repeat): the current track is played repeatedly.
 - **REP ALL** (repeat all): all tracks are played repeatedly.
 - **REP ALB** (repeat album): all tracks in this album are played repeatedly.
 - **SHUF** (shuffle): all tracks are played randomly.
- 2 To resume normal play, press **REPEAT/SHUFFLE** repeatedly until no option is displayed.

6 Adjust sound

Adjust volume

During play, press **VOL +/-** to increase/decrease the volume.

Select a preset sound effect

During play, press **DSC** repeatedly to select:

- **[ROCK]** (rock)
- **[JAZZ]** (jazz)
- **[CLASSIC]** (classic)
- **[POP]** (pop)

Enhance bass

During play, press **DBB** to turn on or off dynamic bass enhancement.

- ↳ If DBB is activated, **[DBB]** (DBB) is displayed.

Mute sound

During play, press **⏏** to mute/unmute sound.

7 Other features

Set the sleep timer

This unit can switch to standby automatically after a set period of time.

When the unit is turned on, press **SLEEP** repeatedly to select a set period of time (in minutes).

- ↳ When sleep timer is activated, **zzz** is displayed.

To deactivate sleep timer

Press **SLEEP** repeatedly until **[OFF]** (off) is displayed.

- ↳ When sleep timer is deactivated, **zzz** disappears.

Set the alarm timer

This unit can be used as an alarm clock. The DISC, TUNER, USB, or iPhone/iPod/iPad is activated to play at a preset time.

Note

- Ensure that you have set the clock correctly.

- 1 Press and hold **TIMER** to activate the timer mode.
- 2 Press **SOURCE** to select a source, and press **TIMER** to confirm.
 - ↳ The hour digits are displayed and begin to blink.
- 3 Press **◀◀ / ▶▶** to set the hour and press **TIMER** to confirm.
 - ↳ The minute digits are displayed and begin to blink.
- 4 Repeat step 3 to set the minute.
 - ↳ The timer is set and activated.

Activate and deactivate the alarm timer

Press **TIMER** repeatedly to activate or deactivate the timer:

- ↳ If the timer is activated, the display shows **⌚**.
- ↳ If the timer is deactivated, **⌚** disappears on the display.

Note

- If DISC/USB/iPhone/iPod/iPad source is selected and the track cannot be played, tuner is activated automatically.

Play from external audio device

You can play from an external audio device such as MP3 player through this unit.

- 1 Connect the audio device.
 - For audio device with red/white audio output sockets:
Connect a red/white audio cable (not supplied) to the **AUX-IN** sockets and to the audio output sockets on the audio device.
 - For audio device with headphone sockets:
Connect the supplied MP3-Link cable to the **MP3-LINK** socket and to the headphone socket on the audio device.
- 2 Press **SOURCE** to select **MP3-LINK/AUX-IN** source.
- 3 Play the device.

Adjust display brightness

Press **DIM** repeatedly to select different levels of display brightness:

- High brightness
- Mid brightness
- Low brightness

8 Product information

Note

- Product information is subject to change without prior notice.

Specifications

Amplifier

Total output power	2 x 60 W RMS
Frequency response	80 Hz - 16 kHz, ± 3 dB
Signal to noise ratio	> 60 dB
MP3 link input	0.5 V RMS 20 k Ω

Disc

Laser type	Semiconductor
Disc diameter	12 cm / 8 cm
Support disc	CD-DA, CD-R, CD-RW, MP3-CD, WMA-CD
Audio DAC	24 Bits / 44.1 kHz
Total harmonic distortion	< 1.5%
Frequency response	60 Hz -16 kHz (44.1 kHz)
Signal to noise ratio	> 55 dBA

Tuner

Tuning range	FM: 87.5 - 108 MHz
Tuning grid	50 KHz
Number of presets	20

Speakers

Speaker impedance	2 x 60 W, 4 OHM
-------------------	-----------------

General information

AC power	110-127 V, 220-240 V; 50/60 Hz
Operation Power Consumption	60 W
Standby Power Consumption	< 12 W
Eco Power Standby Power Consumption	< 1 W
USB Direct	Version 1.1
Dimensions	
- Main Unit (W x H x D)	239 x 141.5 x 230 mm
- Speaker	142 x 307 x 230 mm
Weight	
- Main Unit	1.92 kg
- Speaker	2.55 kg x 2
- Package	1.8 kg

USB playability information

Compatible USB devices:

- USB flash memory (USB 1.1)
- USB flash players (USB 1.1)
- memory cards (requires an additional card reader to work with this unit)

Supported formats:

- USB or memory file format FAT12, FAT16, FAT32 (sector size: 512 bytes)
- MP3 bit rate (data rate): 32-320 Kbps and variable bit rate
- WMA v9 or earlier
- Directory nesting up to a maximum of 8 levels
- Number of albums/ folders: maximum 99
- Number of tracks/titles: maximum 999
- ID3 tag v2.0 to v2.3
- File name in Unicode UTF8 (maximum length: 16 bytes)

Supported MP3 disc formats

- ISO9660, Joliet
- Maximum title number: 999 (depending on file name length)
- Maximum album number: 99
- Supported sampling frequencies: 32 kHz, 44.1 kHz, 48 kHz
- Supported Bit-rates: 32~320 (kbps), variable bit rates

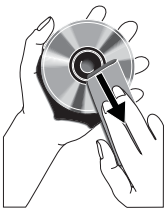
Maintenance

Clean the cabinet

- Use a soft cloth slightly moistened with a mild detergent solution. Do not use a solution containing alcohol, spirits, ammonia or abrasives.

Clean discs

- When a disc becomes dirty, clean it with a cleaning cloth. Wipe the disc from the centre out.



- Do not use solvents such as benzene, thinner, commercially available cleaners, or antistatic spray intended for analogue records.

Clean the disc lens

- After prolonged use, dirt or dust may accumulate at the disc lens. To ensure good play quality, clean the disc lens with Philips CD lens cleaner or any commercially available cleaner. Follow the instructions supplied with cleaner.

9 Troubleshooting



Warning

- Never remove the casing of this apparatus.

To keep the warranty valid, never try to repair the system yourself.

If you encounter problems when using this apparatus, check the following points before requesting service. If the problem remains unsolved, go to the Philips web site (www.philips.com/welcome). When you contact Philips, ensure that the apparatus is nearby and the model number and serial number are available.

No power

- Ensure that the AC power cord of the unit is connected properly.
- Ensure that there is power at the AC outlet.
- As a power-saving feature, the system switches off automatically 15 minutes after track play reaches the end and no control is operated.

No sound or poor sound

- Adjust the volume.
- Disconnect the headphones.
- Check that the speakers are connected correctly.
- Check if the stripped speaker wires are clamped.

No response from the unit

- Disconnect and reconnect the AC power plug, then turn on the unit again.
- As a power-saving feature, the system switches off automatically 15 minutes after track play reaches the end and no control is operated.

Remote control does not work

- Before you press any function button, first select the correct source with the remote control instead of the main unit.

- Reduce the distance between the remote control and the unit.
- Insert the battery with its polarities (+/– signs) aligned as indicated.
- Replace the battery.
- Aim the remote control directly at the sensor on the front of the unit.

No disc detected

- Insert a disc.
- Check if the disc is inserted upside down.
- Wait until the moisture condensation at the lens has cleared.
- Replace or clean the disc.
- Use a finalized CD or correct format disc.

Cannot display some files in USB device

- The number of folders or files in the USB device has exceeded a certain limit. This phenomenon is not a malfunction.
- The formats of these files are not supported.

USB device not supported

- The USB device is incompatible with the unit. Try another one.

Poor radio reception

- Increase the distance between the unit and your TV or VCR.
- Fully extend the FM antenna.
- Connect an outdoor FM antenna instead.

Timer does not work

- Set the clock correctly.
- Switch on the timer.

Clock/timer setting erased

- Power has been interrupted or the power cord has been disconnected.
- Reset the clock/timer.

10 Notice

Any changes or modifications made to this device that are not expressly approved by Philips Consumer Lifestyle may void the user's authority to operate the equipment.

Your product is designed and manufactured with high quality materials and components, which can be recycled and reused.

Never dispose of your product with other household waste. Please inform yourself about the local rules on the separate collection of electrical and electronic products and batteries.

The correct disposal of these products helps prevent potentially negative consequences on the environment and human health.

Your product contains batteries, which cannot be disposed of with normal household waste.

Please inform yourself about the local rules on separate collection of batteries. The correct disposal of batteries helps prevent potentially negative consequences on the environment and human health.

Please visit www.recycle.philips.com for additional information on a recycling center in your area.

Environmental information

All unnecessary packaging has been omitted. We have tried to make the packaging easy to separate into three materials: cardboard (box), polystyrene foam (buffer) and polyethylene (bags, protective foam sheet.)

Your system consists of materials which can be recycled and reused if disassembled by a specialized company. Please observe the local regulations regarding the disposal of packaging materials, exhausted batteries and old equipment.



The making of unauthorized copies of copy-protected material, including computer programs, files, broadcasts and sound

recordings, may be an infringement of copyrights and constitute a criminal offence. This equipment should not be used for such purposes.



“Made for iPod,” “Made for iPhone,” and “Made for iPad” mean that an electronic accessory has been designed to connect specifically to iPod, iPhone, or iPad, respectively, and has been certified by the developer to meet Apple performance standards. Apple is not responsible for the operation of this device or its compliance with safety and regulatory standards. Please note that the use of this accessory with iPod, iPhone, or iPad may affect wireless performance.

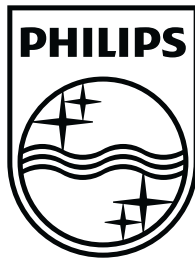
iPod and iPhone are trademarks of Apple Inc., registered in the U.S. and other countries. iPad is a trademark of Apple Inc.

This apparatus includes this label:



 **Note**

- The type plate is located on the bottom of the apparatus.



Specifications are subject to change without notice
© 2012 Koninklijke Philips Electronics N.V.
All rights reserved.

DCM3020_55_UM_V1.0

