

Register your product and get support at

www.philips.com/welcome

DCM2055



Thank you for choosing Philips.

Need help fast?

Read your Quick Start Guide and/or User Manual first for quick tips that make using your Philips product more enjoyable.

If you have read your instructions and still need assistance, you may access our online help at

www.philips.com/welcome or call

1-888-PHILIPS (744-5477) while with your product.

(and Model / Serial number)



Philips vous remercie de votre confiance.

Besoin d'une aide rapide?

Le Guide rapide de début et Manuel de l'utilisateur regorgent d'astuces destinées à simplifier l'utilisation de votre produit Philips.

Toutefois, si vous ne parvenez pas à résoudre votre problème, vous pouvez accéder à notre aide en ligne à l'adresse

www.philips.com/welcome ou formez le

1-800-661-6162 (Francophone)

1-888-PHILIPS (744-5477) (English speaking)

Veillez à avoir votre produit à portée de main.

(et model / serial nombre)



Gracias por escoger Philips

Necesita ayuda inmediata?

Lea primero la Guía rápida del comienzo o el Manual del usuario, en donde encontrará consejos que le ayudarán a disfrutar plenamente de su producto Philips.

Si después de leerlo aún necesita ayuda, consulte nuestro servicio de asistencia en línea en

www.philips.com/welcome o llame al teléfono

1-888-PHILIPS (744-5477)

y tenga a mano el producto. (y número de model / serial)



User manual 3

Manual del usuario 23

Mode d'emploi 43

PHILIPS

Contents

1 Important	6
Important Safety Instructions	6
Know these safety symbols	7
Hearing Safety	7

2 Your Micro System	8
Introduction	8
What's in the box	8
Overview of the main unit	8
Overview of the remote control	9

3 Get started	11
Placement	11
Prepare FM antenna	11
Prepare the remote control	11
Connect power	11
Set clock	12
Store FM radio stations automatically	12
Turn on	12

4 Play	13
Play disc	13
Play from USB	13
Play from iPod/iPhone	13
Play options	14
Adjust sound	15
Display different information	15

5 Listen to FM radio	16
Tune to FM radio stations	16
Program FM radio stations automatically	16
Program FM radio stations manually	16
Select a preset radio station	16
Select stereo/mono broadcast	16

6 Other features	17
Set the alarm timer	17
Set the sleep timer	17
Play from an external device	17
Listen through the headphone	17

7 Product information	18
Specifications	18
USB playability information	18
Supported MP3 disc formats	19

8 Troubleshooting	20
--------------------------	----

9 Notice	21
Disposal of your old product and batteries	21

Register online at www.philips.com/welcome today to
get the very most from your purchase.

Registering your model with PHILIPS makes you eligible for all of the valuable benefits listed below, so don't miss out. Register online at www.philips.com/welcome to ensure:

*Product Safety Notification

By registering your product, you'll receive notification - directly from the manufacturer.

*Additional Benefits

Registering your product guarantees that you'll receive all of the privileges to which you're entitled, including special money-saving offers.

PHILIPS

*Congratulations on your purchase,
and welcome to the "family!"*

Dear PHILIPS product owner:

Thank you for your confidence in PHILIPS. You've selected one of the best-built, best-backed products available today. We'll do everything in our power to keep you happy with your purchase for many years to come.

As a member of the PHILIPS "family," you're entitled to protection by one of the most comprehensive warranties in the industry. What's more, your purchase guarantees you'll receive all the information and special offers for which you qualify, plus easy access to accessories from our convenient home shopping network.

Most importantly, you can count on our uncompromising commitment to your total satisfaction.

All of this is our way of saying welcome - and thanks for investing in a PHILIPS product.

P.S. To get the most from your PHILIPS purchase, be sure to register online at:

www.philips.com/welcome

Know these
safety symbols



This "bolt of lightning" indicates uninsulated material within your unit may cause an electrical shock. For the safety of everyone in your household, please do not remove product covering.

The "exclamation point" calls attention to features for which you should read the enclosed literature closely to prevent operating and maintenance problems.

WARNING: To reduce the risk of fire or electric shock, this apparatus should not be exposed to rain or moisture and objects filled with liquids, such as vases, should not be placed on this apparatus.

CAUTION: To prevent electric shock, match wide blade of plug to wide slot, fully insert.

ATTENTION: Pour éviter les chocs électriques, introduire la lame la plus large de la fiche dans la borne correspondante de la prise et pousser jusqu'au fond.

For Customer Use

Enter below the Serial No. which is located on the rear of the cabinet. Retain this information for future reference.

Model No. _____

Serial No. _____

PHILIPS

Visit our World Wide Web Site at <http://www.philips.com/welcome>

PHILIPS LIMITED WARRANTY

ONE (1) YEAR

WARRANTY COVERAGE:

Philips warranty obligation is limited to the terms set forth below.

WHO IS COVERED:

Philips warrants the product to the original purchaser or the person receiving the product as a gift against defects in materials and workmanship as based on the date of original purchase ("Warranty Period") from an Authorized Dealer. The original sales receipt showing the product name and the purchase date from an authorized retailer is considered such proof.

WHAT IS COVERED:

The Philips warranty covers new products if a defect in material or workmanship occurs and a valid claim is received by Philips within the Warranty Period. At its option, Philips will either (1) repair the product at no charge, using new or refurbished replacement parts, or (2) exchange the product with a product that is new or which has been manufactured from new, or serviceable used parts and is at least functionally equivalent or most comparable to the original product in Philips current inventory, or (3) refund the original purchase price of the product. Philips warrants replacement products or parts provided under this warranty against defects in materials and workmanship from the date of the replacement or repair for ninety (90) days or for the remaining portion of the original product's warranty, whichever provides longer coverage for you. When a product or part is exchanged, any replacement item becomes your property and the replaced item becomes Philips' property. When a refund is given, your product becomes Philips' property.

Note: Any product sold and identified as refurbished or renewed carries a ninety (90) day limited warranty.

Replacement product can only be sent if all warranty requirements are met. Failure to follow all requirements can result in delay.

WHAT IS NOT COVERED - EXCLUSIONS AND LIMITATIONS:

This Limited Warranty applies only to the new products manufactured by or for Philips that can be identified by the trademark, trade name, or logo affixed to it. This Limited Warranty does not apply to any non-Philips hardware product or any software, even if packaged or sold with the product. Non-Philips manufacturers, suppliers, or publishers may provide a separate warranty for their own products packaged with the bundled product.

Philips is not liable for any damage to or loss of any programs, data, or other information stored on any media contained within the product, or any non-Philips product or part not covered by this warranty. Recovery or reinstallation of programs, data or other information is not covered under this Limited Warranty.

This warranty does not apply (a) to damage caused by accident, abuse, misuse, neglect, misapplication, or non-Philips product, (b) to damage caused by service performed by anyone other than Philips or Philips Authorized Service Location, (c) to a product or a part that has been modified without the written permission of

Philips, or (d) if any Philips serial number has been removed or defaced, or (e) product, accessories or consumables sold "AS IS" without warranty of any kind by including refurbished Philips product sold "AS IS" by some retailers.

This Limited Warranty does not cover:

- Shipping charges to return defective product to Philips.
- Labor charges for installation or setup of the product, adjustment of customer controls on the product, and installation or repair of antenna/signal source systems outside of the product.
- Product repair and/or part replacement because of improper installation or maintenance, connections to improper voltage supply, power line surge, lightning damage, retained images or screen markings resulting from viewing fixed stationary content for extended periods, product cosmetic appearance items due to normal wear and tear, unauthorized repair or other cause not within the control of Philips.
- Damage or claims for products not being available for use, or for lost data or lost software.
- Damage from mishandled shipments or transit accidents when returning product to Philips.
- A product that requires modification or adaptation to enable it to operate in any country other than the country for which it was designed, manufactured, approved and/or authorized, or repair of products damaged by these modifications.
- A product used for commercial or institutional purposes (including but not limited to rental purposes).
- Product lost in shipment and no signature verification receipt can be provided.
- Failure to operate per Owner's Manual.

TO OBTAIN ASSISTANCE IN THE U.S.A., PUERTO RICO, OR U.S. VIRGIN ISLANDS...

Contact Philips Customer Care Center at:
1-888-PHILIPS (1-888-744-5477)

TO OBTAIN ASSISTANCE IN CANADA...

1-800-661-6162 (French Speaking)
1-888-PHILIPS (1-888-744-5477) - (English or Spanish Speaking)

REPAIR OR REPLACEMENT AS PROVIDED UNDER THIS WARRANTY IS THE EXCLUSIVE REMEDY FOR THE CONSUMER. PHILIPS SHALL NOT BE LIABLE FOR ANY INCIDENTAL OR CONSEQUENTIAL DAMAGES FOR BREACH OF ANY EXPRESS OR IMPLIED WARRANTY ON THIS PRODUCT. EXCEPT TO THE EXTENT PROHIBITED BY APPLICABLE LAW, ANY IMPLIED WARRANTY OF MERCHANTABILITY OR FITNESS FOR A PARTICULAR PURPOSE ON THIS PRODUCT IS LIMITED IN DURATION TO THE DURATION OF THIS WARRANTY.

Some states do not allow the exclusions or limitation of incidental or consequential damages, or allow limitations on how long an implied warranty lasts, so the above limitations or exclusions may not apply to you.


This warranty gives you specific legal rights. You may have other rights which vary from state/province to state/province.

Philips, P.O. Box 10313 Stamford, CT 06904

3140 035 50201

1 Important

Important Safety Instructions

- ① Read these instructions.
 - ② Keep these instructions.
 - ③ Heed all warnings.
 - ④ Follow all instructions.
 - ⑤ Do not use this apparatus near water.
 - ⑥ Clean only with dry cloth.
 - ⑦ Do not block any ventilation openings. Install in accordance with the manufacturer's instructions.
 - ⑧ Do not install near any heat sources such as radiators, heat registers, stoves, or other apparatus (including amplifiers) that produce heat.
 - ⑨ Do not defeat the safety purpose of the polarized or grounding-type plug. A polarized plug has two blades with one wider than the other. A grounding type plug has two blades and a third grounding prong. The wide blade or the third prong are provided for your safety. If the provided plug does not fit into your outlet, consult an electrician for replacement of the obsolete outlet.
 - ⑩ Protect the power cord from being walked on or pinched, particularly at plugs, convenience receptacles, and the point where they exit from the apparatus.
 - ⑪ Only use attachments/accessories specified by the manufacturer.
 - ⑫ Use only with the cart, stand, tripod, bracket, or table specified by the manufacturer or sold with the apparatus. When a cart is used, use caution when moving the cart/apparatus combination to avoid injury from tip-over.
- 
- ⑬ Unplug this apparatus during lightning storms or when unused for long periods of time.
 - ⑭ Refer all servicing to qualified service personnel. Servicing is required when the apparatus has been damaged in any way, such as power-supply cord or plug is damaged, liquid has been spilled or objects have fallen into the apparatus, the apparatus has been exposed to rain or moisture, does not operate normally, or has been dropped.
 - ⑮ **Battery usage CAUTION** – To prevent battery leakage which may result in bodily injury, property damage, or damage to the unit:
 - Install all batteries correctly, + and - as marked on the unit.
 - Do not mix batteries (old and new or carbon and alkaline, etc.).
 - Remove batteries when the unit is not used for a long time.
 - ⑯ Apparatus shall not be exposed to dripping or splashing.
 - ⑰ Do not place any sources of danger on the apparatus (e.g. liquid filled objects, lighted candles).
 - ⑱ This product may contain lead and mercury. Disposal of these materials may be regulated due to environmental

considerations. For disposal or recycling information, please contact your local authorities or the Electronic Industries Alliance: www.eiae.org.

- ①9 Where the plug of the Direct Plug-in Adapter is used as the disconnect device, the disconnect device shall remain readily operable.

Know these safety symbols



This 'bolt of lightning' indicates uninsulated material within your unit may cause an electrical shock. For the safety of everyone in your household, please do not remove product covering.

The 'exclamation point' calls attention to features for which you should read the enclosed literature closely to prevent operating and maintenance problems.

WARNING: To reduce the risk of fire or electric shock, this apparatus should not be exposed to rain or moisture and objects filled with liquids, such as vases, should not be placed on this apparatus.

CAUTION: To prevent electric shock, match wide blade of plug to wide slot, fully insert.

Warning

- Never remove the casing of this apparatus.
- Never place this apparatus on other electrical equipment.
- Ensure that you always have easy access to the power cord, plug or adaptor to disconnect the apparatus from the power.

Hearing Safety

Danger

- To avoid hearing damage, limit the time you use the headphones at high volume and set the volume to a safe level. The louder the volume, the shorter is the safe listening time.

Be sure to observe the following guidelines when using your headphones.

- Listen at reasonable volumes for reasonable periods of time.
- Be careful not to adjust the volume continuously upwards as your hearing adapts.
- Do not turn up the volume so high that you can't hear what's around you.
- You should use caution or temporarily discontinue use in potentially hazardous situations.
- Excessive sound pressure from earphones and headphones can cause hearing loss.

Caution

- Use of controls or adjustments or performance of procedures other than herein may result in hazardous radiation exposure or other unsafe operation.

2 Your Micro System

Congratulations on your purchase, and welcome to Philips! To fully benefit from the support that Philips offers, register your product at www.philips.com/welcome.

Introduction

With this unit, you can:

- enjoy audio from discs, iPod/iPhone, USB devices, and other external devices
- listen to FM radio

You can enrich sound output with these sound effects:

- Digital Sound Control (DSC)
- Dynamic Bass Boost (DBB)

What's in the box

Check and identify the contents of your package:

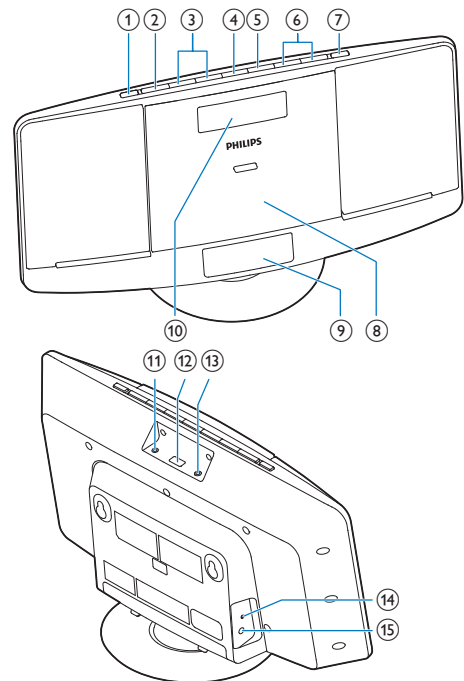
- Main unit
- Remote control
- Power adapter
- 2 X AAA batteries
- Mounting kit (2 dowels and 2 screws)
- User manual
- Quick start guide
- Wall mounting instructions

If you contact Philips, you will be asked for the model and serial number of this apparatus. The model number and serial number are on the bottom of the apparatus. Write the numbers here:

Model No. _____

Serial No. _____

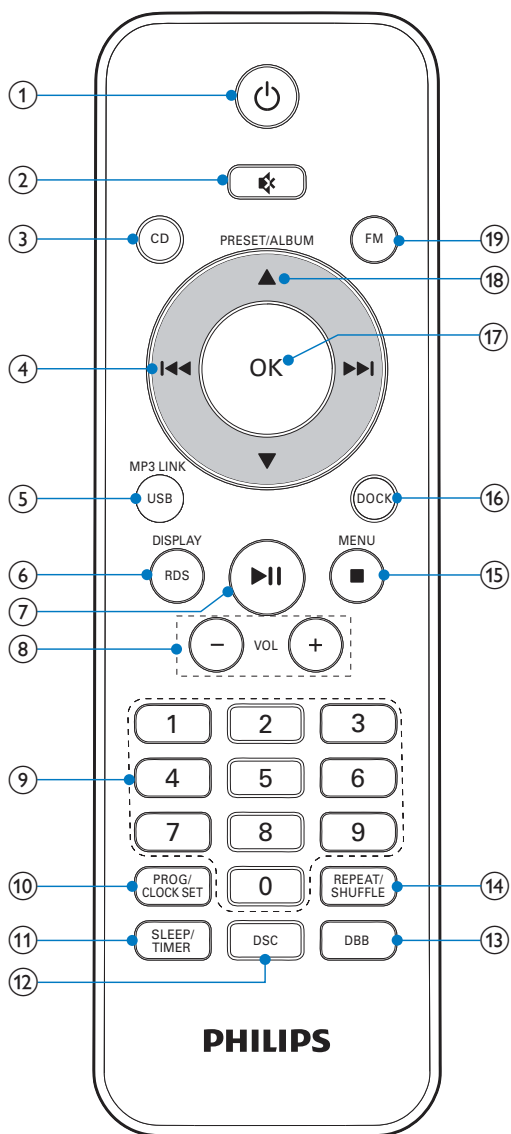
Overview of the main unit



- 1** **Power**
 - Turn the unit on/off.
 - Switch to standby mode.
- 2** **SOURCE**
 - Select a source: CD, FM, USB, Dock, or MP3 LINK.
- 3** **Track Navigation**
 - Skip to the previous or next track.
 - Search within a track or disc.
 - Tune to radio stations.
 - Adjust time.
- 4** **OK/Play/Pause**
 - Confirm selection.
 - Switch between mono and stereo broadcast.
 - Start or pause play.
- 5** **MENU/Stop**
 - Access iPod/iPhone menu.
 - Stop play or erase a program.

- ⑥ **VOLUME + / -**
 - Adjust volume.
- ⑦ **▲**
 - Open or close the disk tray.
- ⑧ **Disc tray**
- ⑨ **DOCK for iPod/iPhone**
- ⑩ **Display panel**
 - Show play information.
- ⑪ **MP3-LINK**
 - Connect an external audio device.
- ⑫ **↔**
 - Connect USB device.
- ⑬ **🎧**
 - Headphone socket.
- ⑭ **FM ANT**
 - Improve FM reception.
- ⑮ **DC IN**
 - Connect power.

Overview of the remote control



- ① **⏻**
 - Turn the unit on or off.
 - Switch to standby mode.
- ② **🔇**
 - Mute or restore sound.

- ③ **CD**
 - Select CD source.
- ④ **⏮ / ⏭**
 - Skip to the previous or next track.
 - Search within a track or disc.
 - Tune to radio stations.
 - Adjust time.
- ⑤ **USB/MP3 LINK**
 - Select USB or MP3 link source.
- ⑥ **RDS/DISPLAY**
 - Show time and play information.
 - Have no RDS function.
- ⑦ **▶ ||**
 - Start or pause play.
- ⑧ **VOL +/-**
 - Adjust volume.
- ⑨ **Numeric Keypad 0 - 9**
 - Select a track from a disc or USB device directly.
 - Select a preset radio station.
- ⑩ **PROG/CLOCK SET**
 - Program tracks.
 - Program radio stations.
 - Set time.
- ⑪ **SLEEP/TIMER**
 - Set sleep or alarm timer.
- ⑫ **DSC**
 - Select a preset sound setting.
- ⑬ **DBB**
 - Turn dynamic bass enhancement on or off.
- ⑭ **REPEAT/SHUFFLE**
 - Play a track or all tracks repeatedly.
 - Play tracks in current album repeatedly.
 - Play tracks randomly.
- ⑮ **MENU/ ■**
 - Access iPod/iPhone menu.
 - Stop play or erase a program.
- ⑯ **DOCK**
 - Select iPod/iPhone source.
- ⑰ **OK**
 - Confirm selection.
 - Switch between mono and stereo broadcast.
- ⑱ **▲ / ▼**
 - Select a preset radio station.
 - Skip to the previous or next album.
- ⑲ **FM**
 - Select FM tuner source.

3 Get started

! Caution

- Use of controls or adjustments or performance of procedures other than herein may result in hazardous radiation exposure or other unsafe operation.

Always follow the instructions in this chapter in sequence.

Placement

You can place the unit on a flat surface or mount the unit on a wall.

Mount on a wall

See the wall mounting instructions included in the package.

Prepare FM antenna

For better reception, fully extend and adjust the position of the FM antenna.

≡ Note

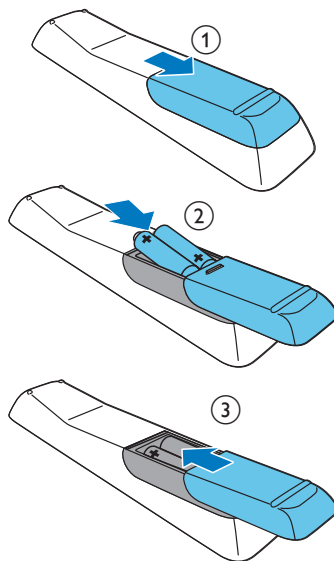
- To prevent interference, position the antenna as far as possible from TV, VCR, or other radiation source.

Prepare the remote control

! Caution

- Risk of explosion! Keep batteries away from heat, sunshine or fire. Never discard batteries in fire.

- 1 Open the battery compartment.
- 2 Insert the supplied batteries with correct polarity (+/-) as indicated.
- 3 Close the battery compartment.



Connect power

! Caution

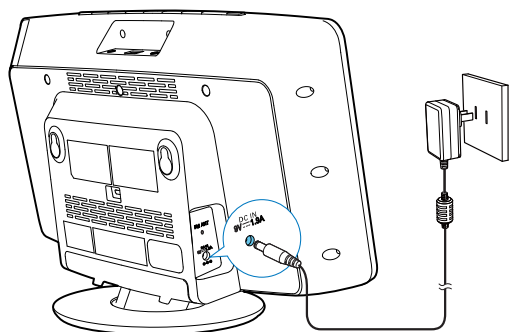
- Risk of product damage! Make sure that the power supply voltage corresponds to the voltage printed on the back or the underside of the unit.
- Risk of electric shock! When you unplug the AC power adapter, always pull the plug from the socket. Never pull the cord.
- Before connecting the AC adapter, Make sure that you have completed all other connections.

≡ Note

- The type plate is located at the back of the main unit.

Connect the power adapter to:

- the **DC IN** socket on the main unit.
- the wall socket.



Store FM radio stations automatically

When the unit turns to FM tuner mode, and no radio stations are stored, the unit begins to store FM radio stations automatically.

- 1 Connect the unit to the power supply.
 - ↳ **[AUTO INSTALL - PRESS PLAY, STOP CANCEL]** (to auto install, press ►||; to cancel, press ■) is displayed.
- 2 Press and hold ►|| for 3 seconds to start full scan.
 - ↳ The unit automatically stores FM radio stations with sufficient signal strength and then broadcasts the first preset station.

Set clock

- 1 In standby mode, press and hold **CLOCK SET** on the remote control for two seconds.
 - ↳ **[SET CLOCK]** (set clock) scrolls on the display, then the 12/24 hour format blinks.
- 2 Press ◀◀/ ▶▶ repeatedly to select an hour format.
- 3 Press **CLOCK SET** to confirm.
 - ↳ The hour digits blink.
- 4 Repeat steps 2-3 to set the hour and minute respectively.

Note

- If the system is idle for 90 seconds, it exits clock setting mode automatically.

Tip

- To exit storing mode, press ⏻ or ■.

Turn on

Press ⏻.

- ↳ The unit switches to the last selected source.

Note

- To select a source, press **SOURCE** repeatedly or the source selection buttons on the remote control.

Switch to standby mode

Press ⏻ again to switch the unit to standby mode.

- ↳ The clock (if set) appears on the display panel.

4 Play

Play disc

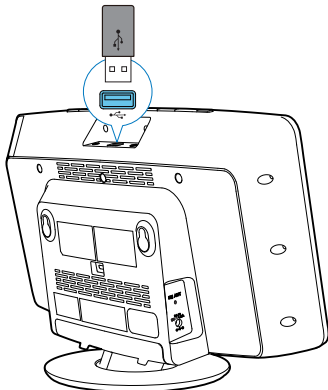
- 1 Press **▲** to open the disc tray.
- 2 Insert a disc with the printed side facing up.
- 3 Press **▲** to close the disc tray.
- 4 Press **CD** on the remote control to select the disc source.
↳ **[Reading]** (reading) blinks for a moment, then CD starts playing automatically. If not, press **▶||**.

Play from USB

Note

- Make sure that the USB device contains playable audio content.

- 1 Insert the USB storage device into the  socket.



- 2 Press **USB** on the remote control to select the USB source.
↳ Play starts automatically. If not, press **▶||**.

Play from iPod/iPhone

You can enjoy audio from iPod/iPhone through this unit.

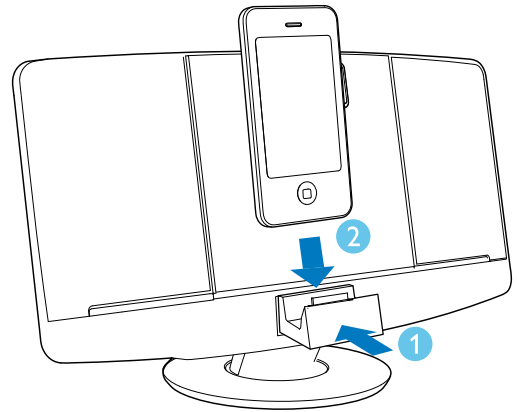
Compatible iPod/iPhone

The unit supports the following iPod and iPhone models:

Made for:

- iPod touch (1st, 2nd, 3rd, and 4th generation)
- iPod nano (2nd, 3rd, 4th, 5th, and 6th generation)
- iPhone 4
- iPhone 3GS
- iPhone 3G
- iPhone

Load the iPod/iPhone



- 1 Push to open the dock compartment.
- 2 Place the iPod/iPhone in the dock.

Listen to the iPod/iPhone

- 1 Make sure that the iPod/iPhone is loaded correctly.
- 2 Press **SOURCE** repeatedly or **DOCK** on the remote control to select iPod/iPhone source.
- 3 Play tracks in the iPod/iPhone.
 - To pause/resume play, press **▶||**.
 - To skip to a track, press **◀◀ / ▶▶**.
 - To search during play, press and hold **◀◀ / ▶▶**, then release to resume normal play.
 - To go back to the previous iPod/iPhone menu, press **MENU**.
 - To scroll through the menu, press **▲ / ▼**.
 - To confirm a selection, press **OK**.

Remove the iPod/iPhone

Pull the iPod/iPhone out of the dock.

Charge the iPod/iPhone

When the unit is connected to power, the docked iPod/iPhone begins to charge.



Tip





- For certain iPod models, it may take up to a minute before the charging indication appears.

Play options

Pause/resume play

During play, press **▶||** to pause/resume play.

Repeat/shuffle play

- 1 During play, press **REPEAT/SHUFFLE** repeatedly to select:
 - : play the current track repeatedly.
 -  (for MP3/WMA only): play all tracks in this album repeatedly.
 - : play all tracks repeatedly.
 - : play all tracks randomly.
- 2 To resume normal play, press **REPEAT/SHUFFLE** repeatedly until the above icons disappear.

Skip to a track

For CD:

Press **◀◀ / ▶▶** to select another track.

For MP3 disc and USB:

- 1 Press **▲ / ▼** to select an album or a folder.
- 2 Press **◀◀ / ▶▶** to select a track/file.



Tip

- To select a track directly, you can also press a key on the numerical keypad.

Search within a track

- 1 During play, press and hold **◀◀ / ▶▶**.
- 2 Release to resume normal play.

Program tracks

You can program a maximum of 20 tracks.

- 1 In CD or USB mode, press **■** to stop playback.
- 2 Press **PROG** to activate the programming mode.
↪ [PROG] (program) is displayed.
- 3 For MP3/WMA tracks, press **▲ / ▼** repeatedly to select an album.

- 4 Press **◀◀** / **▶▶** repeatedly to select a track, then press **PROG** to confirm.
- 5 Repeat steps 3 to 4 to program more tracks.
- 6 To play the programmed tracks, press **▶||**.
 - ↳ During play, **[PROG]** (program) is displayed.
 - To erase the program, press **■** when playback is stopped.

Adjust sound

During play, you can adjust volume and select sound effects.

Function	Action
To increase/decrease volume	Press VOL +/- .
To mute/restore sound	Press ⊗ .
To turn dynamic bass enhancement on/off	Press DBB .
To select a sound effect: [POP] (pop) [JAZZ] (jazz) [CLASSIC] (classic) [ROCK] (rock) [FLAT] (flat)	Press DSC repeatedly.

Display different information

During play, press **DISPLAY** repeatedly to view time and different play information.

5 Listen to FM radio

Tune to FM radio stations

Note

- Position the antenna as far as possible from TV, VCR, or other radiation source.
- Ensure that you have connected and fully extended the supplied FM antenna.

- 1 Press **FM** to select FM tuner mode.
- 2 Press and hold **◀◀ / ▶▶** for 3 seconds.
↳ **[SEARCH]** (search) is displayed.
↳ The unit tunes to an FM station with strong reception automatically.
- 3 Repeat step 2 to tune to more stations.

To tune to a weak station:

Press **◀◀ / ▶▶** repeatedly until you find optimal reception.

Program FM radio stations automatically

Note

- You can program a maximum of 20 preset FM radio stations.

In FM tuner mode, press and hold **PROG** for 3 seconds.

- ↳ **[AUTO]** (auto) is displayed.
- ↳ The unit stores all the FM radio stations automatically and then broadcasts the first preset radio station.

Program FM radio stations manually

- 1 In tuner mode, tune to an FM radio station.
- 2 Press **PROG** to activate programming mode.
↳ **[PROG]** (program) blinks.
- 3 Press **▲ / ▼** repeatedly to select a channel number.
- 4 Press **PROG** again to confirm.
- 5 Repeat steps 1-4 to store other FM stations.

Note

- To remove a pre-stored station, store another station in its place.

Select a preset radio station

In tuner mode, press **▲ / ▼** or the numeric buttons to select a preset number.

Select stereo/mono broadcast

Note

- Stereo broadcast is the default setting for tuner mode.
- For stations with weak signals: to improve the reception, change to monaural sound.

In FM tuner mode, press **OK** to switch between mono and stereo broadcast.

6 Other features

Set the alarm timer

This unit can be used as an alarm timer. You can select CD, FM tuner, iPod/iPhone, or USB as alarm source.

Note


- Make sure that you have set the clock correctly.

- 1 In standby mode, press and hold **TIMER** until **[SET TIMER]** (set timer) scrolls on the display.
↳ **[SELECT SOURCE]** (select source) is displayed.
- 2 Press **SOURCE** repeatedly or the source selection buttons on the remote control to select a source: disc, FM tuner, iPod/iPhone, or USB.
- 3 Press **TIMER** to confirm.
↳ The hour digits blink.
- 4 Press **◀◀ / ▶▶** repeatedly to set the hour.
- 5 Press **TIMER** to confirm.
↳ The minute digits blink.
- 6 Repeat steps 4-5 to set the minute and alarm volume.

Note

- If the system is in idle for 90 seconds, the unit exits alarm setting mode automatically.
- If iPod/iPhone is selected as alarm source, and you have created a playlist called "PHILIPS" in iTunes and import it to your iPod/iPhone, you will wake to a random track in the playlist.
- If no "PHILIPS" playlist is created in the iPod/iPhone or no track is stored in the playlist, you will wake to your last listened track in the iPod/iPhone.

To activate or deactivate the alarm timer,
In standby mode, press **TIMER** repeatedly to activate or deactivate the alarm.

- ↳  appears when the timer is activated.

Tip

- If CD/USB/iPod source is selected, but no disc is inserted or no USB/iPod/iPhone connected, the unit switches to the tuner source automatically.

Set the sleep timer

Note

- Make sure that you have set the clock correctly.

When the unit is turned on, press **SLEEP** repeatedly to select the sleep timer period (in minutes).

- ↳ When sleep timer is activated, **zZ** is displayed.

Tip


- To deactivate the sleep timer, press **SLEEP** repeatedly until **[OFF]** (off) is displayed.

Play from an external device

You can also listen to an external audio device through this unit.

- 1 Connect the MP3 link cable (not supplied) to:
 - the **MP3 LINK** connector (3.5mm) on the unit.
 - the headphone connector on an external device.
- 2 Press **MP3 LINK** to select the MP3 link source.
- 3 Play the external device (see the device's user manual).

Listen through the headphone

Plug a headphone into the  socket on the unit.

7 Product information



Note

- Product information is subject to change without prior notice.

Specifications

Amplifier

Max. Output Power	15 W RMS
Frequency Response	80 Hz - 16 kHz, \pm 3 dB
Signal to Noise Ratio	\geq 60 dB
MP3 Link Input	0.5 V RMS 20 kohm

Disc

Laser Type	Semiconductor
Disc Diameter	12 cm/8 cm
Support Disc	CD-DA, CD-R, CD-RW, MP3-CD, WMA-CD
Audio DAC	24 Bits/44.1 kHz
Total Harmonic Distortion	<1.5 % (1 kHz)
Frequency Response	60 Hz - 16 kHz
S/N Ratio	>55 dBA

Tuner (FM)

Tuning range	87.5 - 108 MHz
Tuning grid	100 KHz

Sensitivity	
- Mono, 26dB S/N Ratio	<22 dBf
- Stereo, 46dB S/N Ratio	<50 dBf
Search selectivity	>28 dBf
Total harmonic distortion	<3%
Signal to noise ratio	>50 dB
Number of presets	20

General information

AC power	Model: AS190-090-BA190; Input: 100 - 240 V ~, 50/60 Hz, 0.7 A; Output: 9 V \equiv 1.9 A
Operation Power Consumption	13 W
Standby Power Consumption	\leq 1 W
Dimensions	
- Main Unit (W x H x D)	400 x 235 x 98 mm
Weight	
- With Packing	3.7 kg
- Main Unit	2.2 kg

USB playability information

Compatible USB devices:

- USB flash memory (USB1.1)
- USB flash players (USB1.1)
- memory cards (requires an additional card reader to work with this unit)

Supported formats:

- USB or memory file format: FAT12, FAT16, FAT32 (sector size: 512 bytes)
- MP3 bit rate (data rate): 32-320 Kbps and variable bit rate
- WMA v9 or earlier
- Directory nesting up to a maximum of 8 levels
- Number of albums/ folders: maximum 99
- Number of tracks/titles: maximum 999
- ID3 tag v2.0 or later

- File name in Unicode UTF8 (maximum length: 16 bytes)

Unsupported formats:

- Empty albums: an empty album is an album that does not contain MP3/WMA files, and is not be shown in the display.
- Unsupported file formats are skipped. For example, Word documents (.doc) or MP3 files with extension .dlf are ignored and not played.
- AAC, WAV, PCM audio files
- DRM protected WMA files (.wav, .m4a, .m4p, .mp4, .aac)
- WMA files in Lossless format

Supported MP3 disc formats

- ISO9660, Joliet
- Maximum title number: 999 (depending on file name length)
- Maximum album number: 99
- Supported sampling frequencies: 32 kHz, 44.1 kHz, 48 kHz
- Supported Bit-rates: 32~320 (kbps), variable bit rates

8 Troubleshooting



Warning

- Never remove the casing of this device.

To keep the warranty valid, never try to repair the system yourself.

If you encounter problems when using this device, check the following points before requesting service. If the problem remains unsolved, go to the Philips Web page (www.philips.com/support). When you contact Philips, make sure that the device is nearby and the model number and serial number are available.

No power

- Ensure that the AC power plug of the unit is connected properly.
- Ensure that there is power at the AC outlet.
- To save power, the system switches off automatically 15 minutes after track play reaches the end and no control is operated.

No sound or poor sound

- Adjust the volume.
- Disconnect the headphones.

No response from the unit

- Disconnect and reconnect the AC power plug, then turn on the unit again.
- As a power-saving feature, the system switches off automatically 15 minutes after track play reaches the end and no control is operated.

Remote control does not work

- Before you press any function button, first select the correct source with the remote control instead of the main unit.
- Reduce the distance between the remote control and the unit.
- Insert the battery with its polarities (+/- signs) aligned as indicated.
- Replace the battery.

- Aim the remote control directly at the sensor on the front of the unit.

No disc detected

- Insert a disc.
- Check if the disc is inserted upside down.
- Wait until the moisture condensation at the lens has cleared.
- Replace or clean the disc.
- Use a finalized CD or correct format disc.

Cannot display some files in USB device

- The number of folders or files in the USB device has exceeded a certain limit. This phenomenon is not a malfunction.
- The formats of these files are not supported.

USB device not supported

- The USB device is incompatible with the unit. Try another one.

Poor radio reception

- Increase the distance between the unit and your TV or VCR.
- Fully extend the FM antenna.

Timer does not work

- Set the clock correctly.
- Switch on the timer.

Clock/timer setting erased

- Power has been interrupted or the power cord has been disconnected.
- Reset the clock/timer.

9 Notice

Any changes or modifications made to this device that are not expressly approved by Philips Consumer Lifestyle may void the user's authority to operate the equipment.

This Class B digital apparatus complies with Canadian ICES-003.

This device complies with Industry Canada license-exempt RSS standard(s).

The device complies with the FCC-Rules, Part-15. Operation is subject to the following two conditions:

- This device may not cause harmful interference, and
- This device must accept any interference received, including interference that may cause undesired operation.

Disposal of your old product and batteries

Your product is designed and manufactured with high quality materials and components, which can be recycled and reused. Never dispose of your product with other household waste. Please inform yourself about the local rules on the separate collection of electrical and electronic products and batteries. The correct disposal of these products helps prevent potentially negative consequences on the environment and human health. Your product contains batteries, which cannot be disposed of with normal household waste. Please inform yourself about the local rules on separate collection of batteries. The correct disposal of batteries helps prevent potentially negative consequences on the environment and human health.

Please visit www.recycle.philips.com for additional information on a recycling center in your area.

Environmental information

All unnecessary packaging has been omitted.

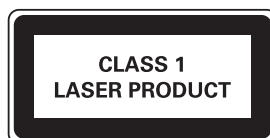
We have tried to make the packaging easy to separate into three materials: cardboard (box), polystyrene foam (buffer) and polyethylene (bags, protective foam sheet.)

Your system consists of materials which can be recycled and reused if disassembled by a specialized company. Please observe the local regulations regarding the disposal of packaging materials, exhausted batteries and old equipment.



"Made for iPod" and "Made for iPhone" mean that an electronic accessory has been designed to connect specifically to iPod or iPhone respectively, and has been certified by the developer to meet Apple performance standards. Apple is not responsible for the operation of this device or its compliance with safety and regulatory standards. Please note that the use of this accessory with iPod or iPhone may affect wireless performance. iPod and iPhone are trademarks of Apple Inc., registered in the U.S. and other countries.

This apparatus includes this label:



Philips Consumer Lifestyle
A division of Philips Electronics North America Corporation
P.O. Box 10313
Stamford, CT 06904
Phone: 1-888-PHILIPS (744-5477)

Meet Philips at the Internet
<http://www.philips.com/welcome>



Specifications are subject to change without notice
© 2012 Koninklijke Philips Electronics N.V.
All rights reserved.

DCM2055_37_UM_V1.0

