

Register your product and get support at
www.philips.com/welcome

DCM186



EN User manual

PHILIPS

Contents

1 Important	4
Safety	4
Notice	5

2 Your Micro Hi-Fi System	8
Introduction	8
What's in the box	8
Overview of the main unit	9
Overview of the remote control	10

3 Connect	12
Connect speakers	12
Connect power	12

4 Get started	13
Prepare the remote control	13
Set clock	13
Turn on	13

5 Play disc	14
Play options	14

6 Play from iPod/iPhone	15
Compatible iPod/iPhone	15
Listen to iPod/iPhone through this unit	15
Charge the iPod/iPhone	15
Remove the iPod/iPhone	15

7 Adjust volume level and sound effect	16
Adjust volume level	16
Enhance bass	16
Select a preset sound effect	16
Mute sound	16

8 Listen to radio	17
Tune to a radio station	17
Program radio stations automatically	17
Program radio stations manually	17
Select a preset radio station	17

9 Other features	18
Set the alarm timer	18
Set the sleep timer	18
Listen to an external device	18

10 Product information	19
Specifications	19
Supported MP3 disc formats	20

11 Troubleshooting	21
---------------------------	----

1 Important

Safety

Know these safety symbols



This 'bolt of lightning' indicates uninsulated material within your unit may cause an electrical shock. For the safety of everyone in your household, please do not remove product covering.

The 'exclamation mark' calls attention to features for which you should read the enclosed literature closely to prevent operating and maintenance problems. **WARNING:** To reduce the risk of fire or electric shock, this apparatus should not be exposed to rain or moisture and objects filled with liquids, such as vases, should not be placed on this apparatus.

CAUTION: To prevent electric shock, fully insert the plug. (For regions with polarized plugs: To prevent electric shock, match wide blade to wide slot.)

Important Safety Instructions

- ① Read these instructions.
- ② Keep these instructions.
- ③ Heed all warnings.
- ④ Follow all instructions.
- ⑤ Do not use this apparatus near water.
- ⑥ Clean only with dry cloth.
- ⑦ Do not block any ventilation openings. Install in accordance with the manufacturer's instructions.

- ⑧ Do not install near any heat sources such as radiators, heat registers, stoves, or other apparatus (including amplifiers) that produce heat.
- ⑨ Protect the power cord from being walked on or pinched, particularly at plugs, convenience receptacles, and the point where they exit from the apparatus.
- ⑩ Only use attachments/accessories specified by the manufacturer.
- ⑪ Use only with the cart, stand, tripod, bracket, or table specified by the manufacturer or sold with the apparatus. When a cart is used, use caution when moving the cart/apparatus combination to avoid injury from tip-over.



- ⑫ Unplug this apparatus during lightning storms or when unused for long periods of time.
- ⑬ Refer all servicing to qualified service personnel. Servicing is required when the apparatus has been damaged in any way, such as power-supply cord or plug is damaged, liquid has been spilled or objects have fallen into the apparatus, the apparatus has been exposed to rain or moisture, does not operate normally, or has been dropped.
- ⑭ Battery usage **CAUTION** – To prevent battery leakage which may result in bodily injury, property damage, or damage to the unit:
 - Install all batteries correctly, + and - as marked on the unit.
 - Do not mix batteries (old and new or carbon and alkaline, etc.).

- Remove batteries when the unit is not used for a long time.
 - Batteries (battery pack or batteries installed) shall not be exposed to excessive heat such as sunshine, fire or the like.
- ⑮ **Apparatus shall not be exposed to dripping or splashing.**
- ⑯ **Do not place any sources of danger on the apparatus (e.g. liquid filled objects, lighted candles).**
- ⑰ **Where the MAINS plug or an appliance coupler is used as the disconnect device, the disconnect device shall remain readily operable.**

 **Warning**

- Never remove the casing of this apparatus.
- Never lubricate any part of this apparatus.
- Never place this apparatus on other electrical equipment.
- Keep this apparatus away from direct sunlight, naked flames or heat.
- Never look into the laser beam inside the apparatus.
- Ensure that you always have easy access to the power cord, plug or adaptor to disconnect the apparatus from the power.

 **Caution**

- Use of controls or adjustments or performance of procedures other than herein may result in hazardous radiation exposure or other unsafe operation.

Hearing safety

Listen at a moderate volume.

- Using headphones at a high volume can impair your hearing. This product can produce sounds in decibel ranges that may cause hearing loss for a normal person, even for exposure less than a minute. The higher decibel ranges are offered for those that may have already experienced some hearing loss.

- Sound can be deceiving. Over time your hearing 'comfort level' adapts to higher volumes of sound. So after prolonged listening, what sounds 'normal' can actually be loud and harmful to your hearing. To guard against this, set your volume to a safe level before your hearing adapts and leave it there.

To establish a safe volume level:

- Set your volume control at a low setting.
- Slowly increase the sound until you can hear it comfortably and clearly, without distortion.

Listen for reasonable periods of time:

- Prolonged exposure to sound, even at normally 'safe' levels, can also cause hearing loss.
- Be sure to use your equipment reasonably and take appropriate breaks.

Be sure to observe the following guidelines when using your headphones.

- Listen at reasonable volumes for reasonable periods of time.
- Be careful not to adjust the volume as your hearing adapts.
- Do not turn up the volume so high that you can't hear what's around you.
- You should use caution or temporarily discontinue use in potentially hazardous situations. Do not use headphones while operating a motorized vehicle, cycling, skateboarding, etc.; it may create a traffic hazard and is illegal in many areas.

Notice

Any changes or modifications made to this device that are not expressly approved by Philips Consumer Lifestyle may void the user's authority to operate the equipment.



This product complies with the radio interference requirements of the European Community.



Your product is designed and manufactured with high quality materials and components, which can be recycled and reused.



When this crossed-out wheeled bin symbol is attached to a product it means that the product is covered by the European Directive 2002/96/EC.

Please inform yourself about the local separate collection system for electrical and electronic products.

Please act according to your local rules and do not dispose of your old products with your normal household waste. Correct disposal of your old product helps to prevent potential negative consequences for the environment and human health.



Your product contains batteries covered by the European Directive 2006/66/EC, which cannot be disposed with normal household waste. Please inform yourself about the local rules on separate collection of batteries because correct disposal helps to prevent negative consequences for the environmental and human health.

Environmental information

All unnecessary packaging has been omitted. We have tried to make the packaging easy to separate into three materials: cardboard (box), polystyrene foam (buffer) and polyethylene (bags, protective foam sheet.)

Your system consists of materials which can be recycled and reused if disassembled by a specialized company. Please observe the local regulations regarding the disposal of packaging materials, exhausted batteries and old equipment.



**Be responsible
Respect copyrights**

The making of unauthorized copies of copy-protected material, including computer programs, files, broadcasts and sound recordings, may be an infringement of copyrights and constitute a criminal offence. This equipment should not be used for such purposes.

Made for



iPod



iPhone

"Made for iPod" and "Made for iPhone" mean that an electronic accessory has been designed to connect specifically to iPod, or iPhone respectively, and has been certified by the developer to meet Apple performance standards. Apple is not responsible for the operation of this device or its compliance with safety and regulatory standards. Please note that the use of this accessory with iPod, or iPhone may affect wireless performance. Apple is not responsible for the operation of this device or its compliance with safety and regulatory standards.

iPod and iPhone are trademarks of Apple Inc., registered in the U.S. and other countries.

Class II equipment symbol



This symbol indicates that the unit has a double insulation system.



Note

- The type plate is located at the rear of the apparatus.

2 Your Micro Hi-Fi System

Congratulations on your purchase, and welcome to Philips! To fully benefit from the support that Philips offers, register your product at www.Philips.com/welcome.

Introduction

With this unit, you can:

- enjoy audio from audio CDs, iPod players, iPhone and other external devices
- listen to radio stations

You can enrich sound output with the sound effect:

- Dynamic Bass Boost (DBB)
- Digital Sound Control (DSC)

The unit supports the following media format:

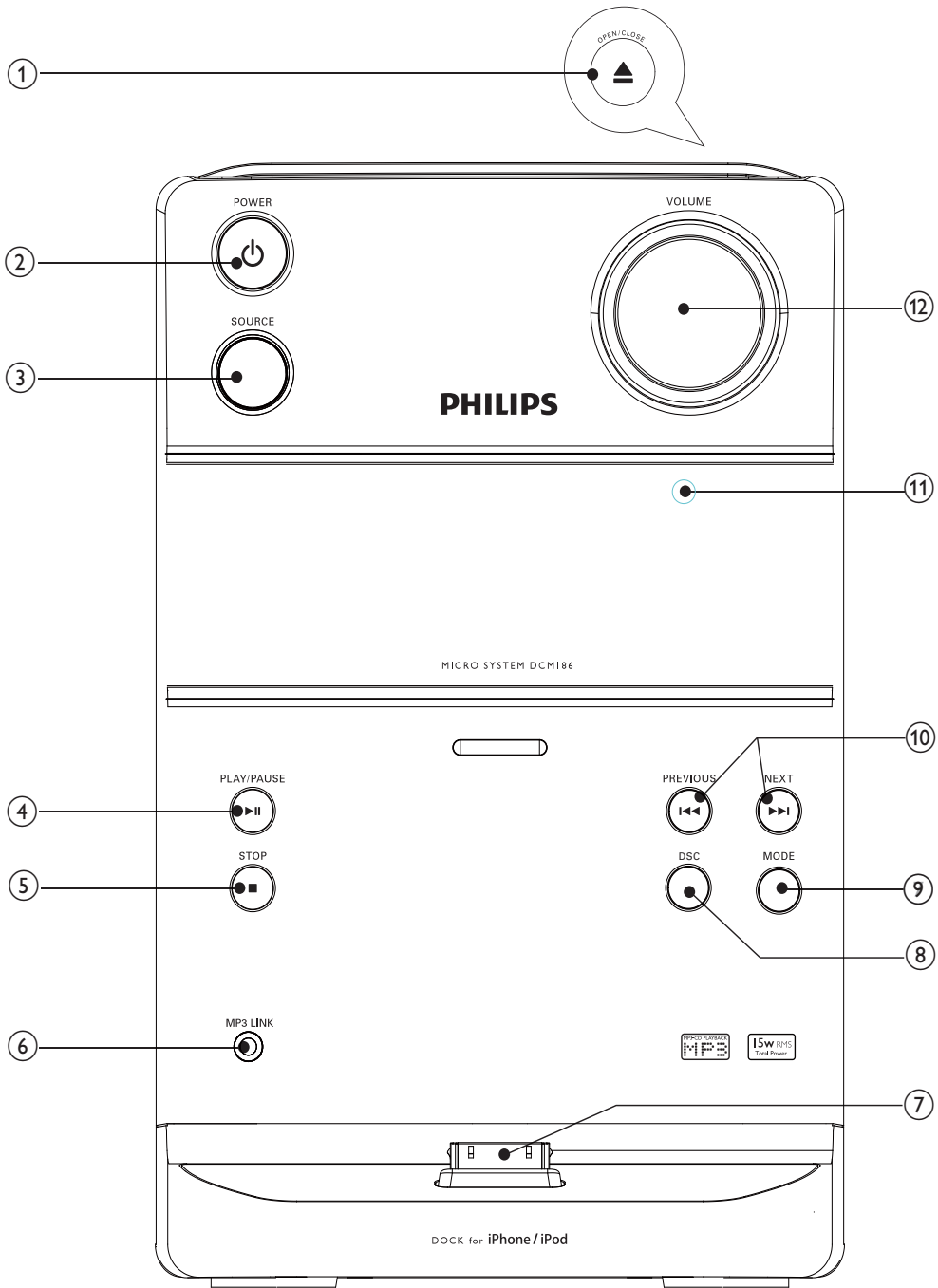


What's in the box

Check and identify the contents of your package:

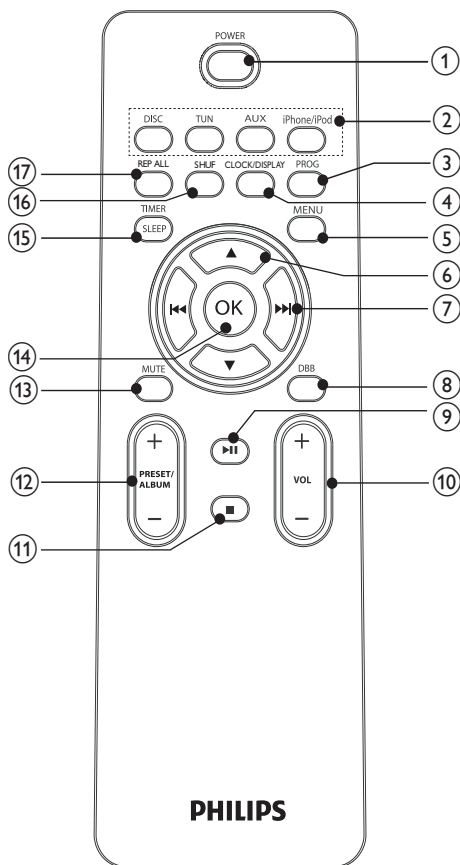
- Main unit
- Loudspeaker boxes x 2
- MP3 link cable x 1
- Remote control
- User manual
- Quick start guide

Overview of the main unit



- ① **OPEN/CLOSE▲**
 - Open or close the disc tray.
- ② **POWER**
 - Turn on the unit, switch to standby mode.
- ③ **SOURCE**
 - Select a source: Disc, Tuner, MP3 LINK, or iPod/iPhone.
- ④ **▶||**
 - Start or pause play.
- ⑤ **■**
 - Stop play or erase a program.
- ⑥ **MP3 LINK**
 - Jack for an external audio device.
- ⑦ **iPod/iPhone dock**
- ⑧ **DSC**
 - Select a preset sound setting: POP, JAZZ, CLASSIC or ROCK.
- ⑨ **MODE**
 - Select repeat/shuffle play mode.
- ⑩ **◀◀▶▶**
 - Skip to the previous/next track.
 - Search within a track/ disc.
 - Tune to a radio station.
 - Adjust time.
- ⑪ **Remote control sensor**
- ⑫ **VOLUME**
 - Adjust volume.

Overview of the remote control



- ① **POWER**
 - Switch on/off the unit
 - Switch to standby mode.
- ② **Source selection keys (DISC, TUN, AUX, iPod/iPhone)**
 - Select a source: CD, tuner, MP3 LINK, or iPod/iPhone.
- ③ **PROG**
 - Program tracks.
 - Program radio stations.
 - Select 12 hour or 24 hour format.

- ④ **CLOCK/DISPLAY**
 - Set the clock.
 - View the clock.
 - During play, select display information.
- ⑤ **MENU**
 - Access the iPod/iPhone menu.
- ⑥ **▲/▼**
 - Navigate through the iPod/iPhone menu.
- ⑦ **⏮/⏭**
 - Fast reverse or fast forward within a track or disc.
 - Skip to the previous/next track.
 - Tune to a radio station.
 - Adjust time.
- ⑧ **DBB**
 - Turns on or off dynamic bass enhancement.
- ⑨ **▶||**
 - Start or pause play.
- ⑩ **VOL +/-**
 - Adjust volume.
- ⑪ **■**
 - Stop play or erase a program.
- ⑫ **PRESET/ALBUM +/-**
 - Skip to the previous/next album.
 - Select a preset radio station.
- ⑬ **MUTE**
 - Mute volume.
- ⑭ **OK**
 - Confirm a selection.
- ⑮ **TIMER/SLEEP**
 - Set the alarm timer.
 - Set the sleep timer.
- ⑯ **SHUF**
 - Play tracks randomly.
- ⑰ **REP ALL**
 - Select a repeat play mode: repeat one track or all tracks.

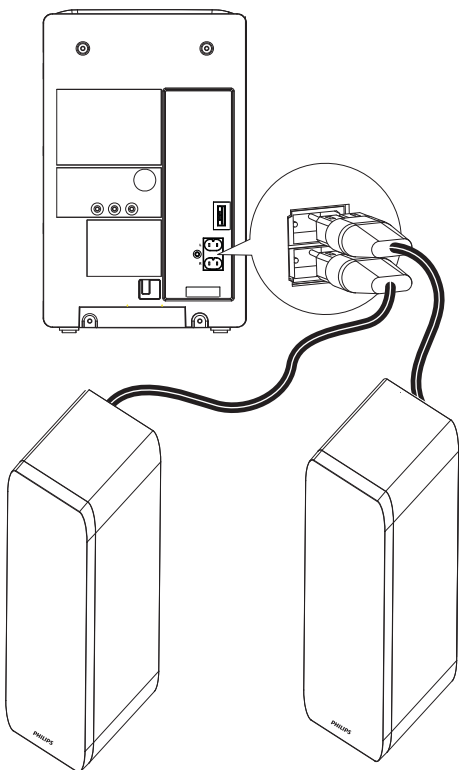
3 Connect

Connect speakers

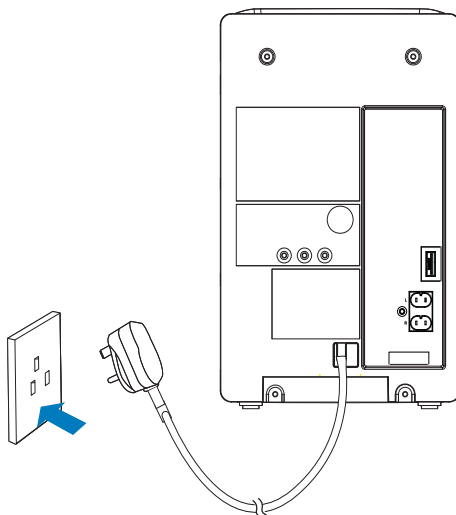
! Caution

- For optimal sound, use the supplied speakers only.
- Connect only speakers with impedance that is the same or higher than the supplied speakers. Refer to the Specifications section of this manual.

- 1 Fully insert the plugs from the speakers into the speaker sockets on the back of the main unit.



Connect power



! Caution

- Risk of product damage! Make sure that the power supply voltage corresponds to the voltage printed on the back or the underside of the Micro Hi-Fi system.
- Before connecting the AC power cord, make sure that you have completed all other connections.

- 1 Connect the AC power cord to the power outlet.

4 Get started

! Caution

- Use the controls only as stated in this user manual.
- Always follow the instructions in this chapter in sequence.

If you contact Philips, you will be asked for the model and serial number of your apparatus. The model number and serial number are on the back of the apparatus. Write the numbers here:

Model No. _____

Serial No. _____

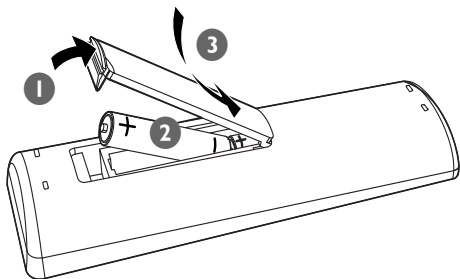
Prepare the remote control

! Caution

- Risk of explosion! Keep batteries away from heat, sunshine or fire. Never discard batteries in fire.

To insert the remote control battery:

- 1 Open the battery compartment.
- 2 Insert 2 AAA batteries (not supplied) with correct polarity (+/-) as indicated.
- 3 Close the battery compartment.



≡ Note

- If you are not going to use the remote control for a long time, remove the batteries.
- Do not use old and new or different types of batteries in combination.
- Batteries contain chemical substances, so they should be disposed of properly.

Set clock

- 1 In the standby mode, press and hold **CLOCK/DISPLAY** to activate the clock setting mode.
↳ The 12 hour or 24 hour format is displayed.
- 2 Press **PROG** repeatedly to select 12 hour or 24 hour format.
- 3 Press **CLOCK/DISPLAY** to confirm.
↳ The hour digits are displayed and begin to blink.
- 4 Press **◀▶▶▶** to set the hour.
- 5 Press **CLOCK/DISPLAY** to confirm.
↳ The minute digits are displayed and begin to blink.
- 6 Press **◀▶▶▶** to set the minute.
- 7 Press **CLOCK/DISPLAY** to confirm.

Turn on

- 1 Press **POWER**.
↳ The product switches to the last selected source.

Switch to standby

- 1 Press **POWER** to switch the unit to standby mode.
↳ The clock (if set) appears on the display panel.

5 Play disc



Caution

- Never look at the laser beam inside the unit.
- Risk of product damage! Never play discs with accessories such as disc stabilizer rings or disc treatment sheets.
- Do not push on the disc tray or put any objects other than discs on the disc tray. It may cause the disc player to malfunction.



Note

- With some disc/file types, play may differ.

- 1 Press **DISC** to select the disc source.
- 2 Lift the disc door on the top of the unit.
- 3 Insert a disc with the printed side facing up, then close the disc tray.
- 4 Press **▶||** to start play.
 - To pause/resume play, press **▶||**.
 - To stop play, press **■**.

Play options

Skip to a track

For CD:

- 1 Press **◀◀▶▶** to select another track.

For MP3 discs:

- 1 Press **PRESET/ALBUM +/-** to select an album or folder.
- 2 Press **◀◀▶▶** to select a track or file.

Search within a track

- 1 During play, press and hold **◀◀▶▶**.
- 2 Release to resume normal play.

Display play information

- 1 During play, press **CLOCK/DISPLAY** repeatedly to select different play information.
- 1 During play, press **REP ALL** repeatedly to select:
 - ↳ **[REP ONE]** : The current track is played repeatedly.
 - ↳ **[REP ALL]** : all tracks are played repeatedly.
- 2 To return to normal play, press **REP ALL** repeatedly until repeat mode is no longer displayed.

Random play

- 1 Press **SHUF**.
 - ↳ **[SHUF]** is displayed: all tracks are played randomly.
- 2 To return to normal play, press **SHUF** again.



Note

- Repeat and shuffle mode can not be activated at the same time.

Program tracks

You can program a maximum of 20 tracks.

- 1 In DISC mode, at the stop position
 - For MP3: press **PRESET/ALBUM +/-** to select an album, and then press **◀◀▶▶** to select a track.
 - For CD: press **◀◀▶▶** to select a track.
- 2 Press **PROG** to store the track.
- 3 Repeat step 1-2 to select and store all tracks to program.
- 4 Press **▶||** to play the programmed tracks.
 - ↳ During play, **[PROG]** is displayed.
 - To erase the program, in the stop position, press **■**.
 - ↳ **[PROG]** disappears.

6 Play from iPod/iPhone

You can enjoy audio from iPod/iPhone through this unit.

Compatible iPod/iPhone

Apple iPod and iPhone models with a 30-pin dock connector:

Made for:

- iPod with video (iPod 5th generation)
- iPod nano (1st generation)
- iPod nano (2nd generation)
- iPod nano (3rd generation)
- iPod nano (4th generation)
- iPod nano (5th generation)
- iPod nano (6th generation)
- iPod classic
- iPod touch (1st generation)
- iPod touch (2nd generation)
- iPod touch (3rd generation)
- iPod touch (4th generation)

Works with:

- iPhone
- iPhone 3G
- iPhone 3GS
- iPhone 4

Listen to iPod/iPhone through this unit

- 1 Place the iPod/iPhone in the dock.
 - ↳ The unit switches to iPod/iPhone mode automatically.
 - To start/pause/resume play, press **▶||**.
 - To skip to a track, press **◀◀▶▶**.
 - To search during play: press and hold **◀◀▶▶**, then release to resume normal play.

- To navigate the menu: press **MENU**, then press **▲/▼** to select, and press **OK** to confirm.

Charge the iPod/iPhone

When the unit is connected to power, the docked iPod/iPhone begins to charge.



Tip

- For certain iPod models, it may take up to a minute before the charging indication appears.

Remove the iPod/iPhone

- 1 Pull the iPod/iPhone out of the dock.

7 Adjust volume level and sound effect

Adjust volume level

- 1 During play, press **VOL +/-** to increase/decrease the volume level.

Enhance bass

- 1 During play, press **DBB** to turn on or off dynamic bass enhancement.
↳ If DBB is activated, DBB is displayed.

Select a preset sound effect

- 1 During play, press **DSC** on the main unit repeatedly to select:
 - **[POP]** (pop)
 - **[JAZZ]** (jazz)
 - **[ROCK]** (rock)
 - **[CLASSIC]** (classic)

Mute sound

- 1 During play, press **MUTE** to mute/unmute sound.

8 Listen to radio

Tune to a radio station

- 1 Press **TUN** to select FM.
- 2 Press and hold **◀▶▶▶** for more than 2 seconds.
 - ↳ [SEARCH] (search) is displayed.
 - ↳ The radio tunes to a station with strong reception automatically.
- 3 Repeat step 2 to tune to more stations.
 - To tune to a weak station, press **◀▶▶▶** repeatedly until you find optimal reception.

Program radio stations automatically

You can program a maximum of 40 preset radio stations.

- 1 In the tuner mode, press and hold **PROG** for 2 seconds to activate automatic program mode.
 - ↳ [AUTO] (auto) is displayed.
 - ↳ All available stations are programmed in the order of waveband reception strength.
 - ↳ The first programmed radio station is broadcast automatically.

Program radio stations manually

You can program a maximum of 40 preset radio stations.

- 1 Tune to a radio station. (See "Tune to a radio station" section.)
- 2 Press **PROG** to activate program mode.

↳ [PROG] (program) blinks on the display.

- 3 Press **PRESET/ALBUM +/-** to allocate a number to this radio station, then press **PROG** to confirm.
 - ↳ The preset number and the frequency of the preset station are displayed.
- 4 Repeat the above steps to program other stations.



Tip

- To overwrite a programmed station, store another station in its place.

Select a preset radio station

- 1 In tuner mode, press **PRESET/ALBUM +/-** to select a preset number.
 - ↳ The radio station stored under the selected number is broadcasted.



Tip

- Position the antenna as far as possible from TV, VCR or other radiation source.
- For optimal reception, fully extend and adjust the position of the antenna.

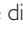

9 Other features

Set the alarm timer

This unit can be used as an alarm clock. Disc, tuner, or iPod/iPhone is activated to play at a preset time.

- 1 Make sure that you have set the clock correctly.
- 2 In standby mode, press and hold **TIMER**.
- 3 Press **DISC**, **TUN**, or **iPhone/iPod** to select a source.
- 4 Press **TIMER** to confirm.
↳ The hour digits are displayed and begin to blink.
- 5 Press **◀▶** to set the hour.
- 6 Press **TIMER** to confirm.
↳ The minute digits are displayed and begin to blink.
- 7 Press **◀▶** to set the minute.
- 8 Press **TIMER** to confirm.
↳ The timer is set and activated.

Activate and deactivate alarm timer

- 1 In the standby mode, press **SLEEP/TIMER** repeatedly to activate or deactivate timer.
↳ If timer is activated, the display shows .
↳ If timer is deactivated,  disappears.



Tip

- Alarm timer is not available in MP3 LINK mode.
- If the DISC/iPod/iPhone source is selected but no disc inserted or no iPod/iPhone connected, the system will switch to the tuner source automatically.

Set the sleep timer

This unit can switch to standby automatically after a set period of time.

- 1 When the unit is on, press **SLEEP** repeatedly to select a set period of time (in minutes).
↳ When sleep timer is activated, the display shows **zZ**.

To deactivate sleep timer

- 1 Press **SLEEP** repeatedly until "off" is displayed.
↳ When sleep timer is deactivated, **zZ** disappears.

Listen to an external device

You can also listen to an external audio device through this unit.

- 1 Press **AUX** to select MP3 link source.
- 2 Connect the supplied MP3 link cable to:
 - the **MP3 LINK** jack on this unit
 - the headphone jack on the device
- 3 Start to play the device. (See the device user manual)

10 Product information

Note

- Product information is subject to change without prior notice.

Specifications

Amplifier

Rated Output Power	15W RMS
Frequency Response	60 - 16kHz, ± 3 dB
Signal to Noise Ratio	>65dBA
Aux Input	0.5 V RMS 20kohm

Disc

Laser Type	Semiconductor
Disc Diameter	12cm/8cm
Support Disc	CD-DA, CD-R, CD-RW, MP3-CD
Audio DAC	24Bits / 44.1kHz
Total Harmonic Distortion	<1%
Frequency Response	60Hz -16kHz (44.1kHz)
S/N Ratio	>65dBA

Tuner-Specs

Tuning Range	FM: 87.5 - 108MHz
Tuning grid	50KHz
Sensitivity	
- Mono, 26dB S/N Ratio	<22 dBf
- Stereo, 46dB S/N Ratio	<43 dBf
Search Selectivity	>28dBf
Total Harmonic Distortion	<3%
Signal to Noise Ratio	>55dB

Speakers

Speaker Impedance	4ohm
Speaker Driver	3.5"
Sensitivity	>82dB/m/W

General information

AC power	230-240V~ 50Hz
Operation Power Consumption	30W
Standby Power Consumption	<2W
Dimensions	
- Main Unit (W x H x D)	209 x 231 x 147mm
- Speaker Box (W x H x D)	146 x 228 x 160mm
Weight	
- With Packing	6.6 kg
- Main Unit	1.95 kg
- Speaker Box	2 x 1.2 kg

Supported MP3 disc formats

- ISO9660, Joliet
- Maximum title number: 999 (depending on file name length)
- Maximum album number: 99
- Supported sampling frequencies: 32 kHz, 44.1kHz, 48 kHz
- Supported Bit-rates: 32-256 (kbps), variable bit rates

11 Troubleshooting



Caution

- Never remove the casing of this apparatus.

To keep the warranty valid, never try to repair the system yourself.

If you encounter problems when using this apparatus, check the following points before requesting service. If the problem remains unsolved, go to the Philips web site (www.philips.com/welcome). When you contact Philips, ensure that the apparatus is nearby and the model number and serial number are available.

No power

- Ensure that the AC power cord of the unit is connected properly.
- Ensure that there is power at the AC outlet.
- As a power-saving feature, the system switches off automatically 15 minutes after track play reaches the end and no control is operated.

No sound or poor sound

- Adjust the volume.
- Disconnect the headphones.
- Check that the speakers are connected correctly.
- Check if the stripped speaker wires are clamped.

Left and right sound outputs reversed

- Check the speaker connections and location.

No response from the unit

- Disconnect and reconnect the AC power plug, then turn on the system again.

Remote control does not work

- Before you press any function button, first select the correct source with the remote control instead of the main unit.
- Reduce the distance between the remote control and the unit.
- Insert the battery with its polarities (+/- signs) aligned as indicated.
- Replace the battery.
- Aim the remote control directly at the sensor on the front of the unit.

No disc detected

- Insert a disc.
- Check if the disc is inserted upside down.
- Wait until the moisture condensation at the lens has cleared.
- Replace or clean the disc.
- Use a finalized CD or correct format disc.

Poor radio reception

- Increase the distance between the unit and your TV or VCR.
- Fully extend the antenna.

Timer does not work

- Set the clock correctly.
- Switch on the timer.

Clock/timer setting erased

- Power has been interrupted or the power cord has been disconnected.
- Reset the clock/timer.

