

Register your product and get support at
www.philips.com/welcome

DCM129



EN User manual

PHILIPS

Contents

1 Important	2
Safety	2

2 Your Docking Music System	4
Introduction	4
What's in the box	4
Overview of the main unit	5
Overview of the remote control	5

3 Connect	6
Connect speakers	6
Connect power	6

4 Get started	7
Prepare the remote control	7
Turn on	8

5 Play	8
Play from iPod/iPhone	8
Play disc	9
Control play	9

6 Listen to radio	10
Tune to a radio station	10
Program radio stations automatically	10
Program radio stations manually	10
Select a preset radio station	10

7 Other features	11
Listen to an external device	11

8 Product information	11
Specifications	11

9 Troubleshooting	12
--------------------------	-----------

10 Notice	13
------------------	-----------

1 Important

Safety



This 'bolt of lightning' indicates uninsulated material within your unit may cause an electrical shock. For the safety of everyone in your household, please do not remove product covering.

The 'exclamation point' calls attention to features for which you should read the enclosed literature closely to prevent operating and maintenance problems.

WARNING: To reduce the risk of fire or electric shock, this apparatus should not be exposed to rain or moisture and objects filled with liquids, such as vases, should not be placed on this apparatus.

CAUTION: To prevent electric shock, match wide blade of plug to wide slot, fully insert.

Important Safety Instructions

- Follow all instructions.
- Heed all warnings.
- Do not use this apparatus near water.
- Clean only with dry cloth.
- Do not block any ventilation openings. Install in accordance with the manufacturer's instructions.
- Do not install near any heat sources such as radiators, heat registers, stoves, or other device (including amplifiers) that produce heat.
- Protect the power cord from being walked on or pinched, particularly at plugs, convenience receptacles, and the point where they exit from the device.
- Only use attachments/accessories specified by the manufacturer.
- Use only with the cart, stand, tripod, bracket, or table specified by the manufacturer or sold with the device. When a cart is used, use caution when moving the cart/device combination to avoid injury from tip-over.



- Unplug this device during lightning storms or when unused for long periods of time.
- Refer all servicing to qualified service personnel. Servicing is required when the device has been damaged in any way, such as power-supply cord or plug is damaged, liquid has been spilled or objects have fallen into the device, the device has been exposed to rain or moisture, does not operate normally, or has been dropped.
- Battery usage **CAUTION** – To prevent battery leakage which may result in bodily injury, property damage, or damage to the remote control:
 - Install the battery correctly, + and - as marked on the remote control.
 - The battery shall not be exposed to excessive heat such as sunshine, fire or the like.
 - Remove battery when the remote control is not used for a long time.
- Device shall not be exposed to dripping or splashing.

- Do not place any sources of danger on the device (e.g. liquid filled objects, lighted candles).
- Where the MAINS plug or an appliance coupler is used as the disconnect device, the disconnect device shall remain readily operable.

Risk of swallowing coin battery

- The product/remote control may contain a coin/button type battery, which can be swallowed. Keep the battery out of reach of children at all times! If swallowed, the battery can cause serious injury or death. Severe internal burns can occur within two hours of ingestion.
- If you suspect that a battery has been swallowed or placed inside any part of the body, seek immediate medical attention.
- When you change the batteries, always keep all new and used batteries out of reach of children. Ensure that the battery compartment is completely secure after you replace the battery.
- If the battery compartment cannot be completely secured, discontinue use of the product. Keep out of reach of children and contact the manufacturer.

- the ratings shown on the plug,
- a BS 1362 approval, and
- the ASTA approval mark.

Contact your dealer if you are not sure about what type of fuse to use.

Caution: To conform with the EMC directive (2004/108/EC), do not detach the plug from the power cord.

Caution

- Use of controls or adjustments or performance of procedures other than herein may result in hazardous radiation exposure or other unsafe operation.

Warning

- Never remove the casing of this device.
- Never lubricate any part of this device.
- Never place this device on other electrical equipment.
- Keep this device away from direct sunlight, naked flames or heat.
- Never look into the laser beam inside this device.
- Ensure that you always have easy access to the power cord, plug, or adaptor to disconnect this device from the power.

Mains fuse

This information applies only to products with a UK mains plug.

This product is fitted with an approved molded plug. If you replace the fuse, use one with:

2 Your Docking Music System

Congratulations on your purchase, and welcome to Philips! To fully benefit from the support that Philips offers, register your product at www.Philips.com/welcome.

Introduction

With this unit, you can:

- enjoy audio from discs, iPod/iPhone, and other external devices
- listen to radio stations

You can enrich sound output with the following sound effect:

- Dynamic Bass Boost (DBB)

The unit supports the following media format:

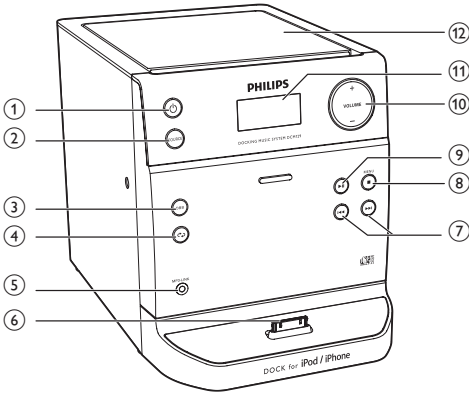


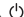




What's in the box

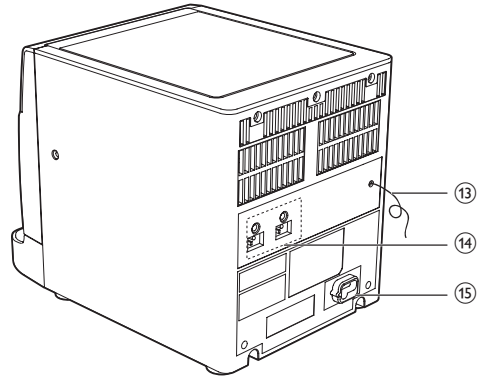
Check and identify the contents of your package:

- Main unit
- 2 speakers
- Remote control (with battery)
- MP3 link cable
- User manual

Overview of the main unit

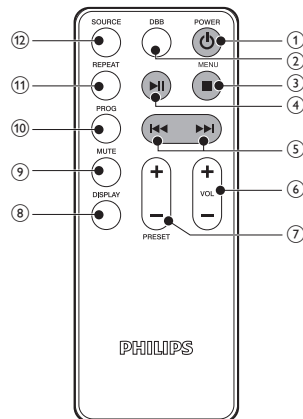


- ① **POWER** 
 - Turn on or off the unit.
 - Switch to standby mode.
- ② **SOURCE**
 - Select a source: disc, iPod/iPhone, FM, or AUX.
- ③ **DBB**
 - Turns on or off Dynamic Bass Boost (DBB).
- ④ 
 - Play a track or all tracks repeatedly.
- ⑤ **MP3 LINK**
 - Jack for an external audio device.
- ⑥ **Dock for iPod/iPhone**
- ⑦ 
 - Skip to the previous/next track.
 - Search within a track or disc.
 - Tune to a radio station.
- ⑧  / **MENU**
 - Stop play or erase a program.
 - In iPod/iPhone mode, access the menu.
- ⑨ 
 - Start or pause play.
- ⑩ **VOL +/-**
 - Adjust volume.



- ⑪ **Display panel**
 - Show current status.
- ⑫ **Disc compartment**
- ⑬ **FM antenna**
 - Improve FM reception.
- ⑭ **Speaker sockets**
 - Connect speakers.
- ⑮ **Power cord**
 - Connect AC power.

Overview of the remote control



- ① **POWER**
 - Turn on/off the unit.
 - Switch to standby mode.
- ② **DBB**
 - Turn on or off dynamic bass boost.
- ③ **■**
 - Stop play or erase a program.
 - In iPod/iPhone mode, access the menu.
- ④ **▶||**
 - Start or pause play.
- ⑤ **◀◀ / ▶▶**
 - Skip to the previous/next track.
 - Search within a track or disc.
 - Tune to a radio station.
- ⑥ **VOL +/-**
 - Adjust volume.
- ⑦ **PRESET +/-**
 - Select a preset radio station.
- ⑧ **DISPLAY**
 - Show current status.
- ⑨ **MUTE**
 - Mute or restore volume.
- ⑩ **PROG**
 - Program tracks.
 - Program radio stations.
- ⑪ **REPEAT**
 - Play a track or all tracks repeatedly.
- ⑫ **SOURCE**
 - Select a source: disc, iPod/iPhone, FM, or AUX.

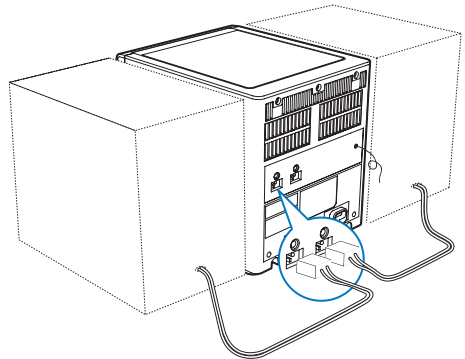
3 Connect

Connect speakers

Note

- Insert the stripped portion of each speaker wire into the socket completely.
- For optimal sound, use the supplied speakers only.
- Connect only speakers with impedance that is the same or higher than the supplied speakers. Refer to the Specifications section of this manual.

Insert the speaker wires completely into the speaker input sockets on the back of the unit.

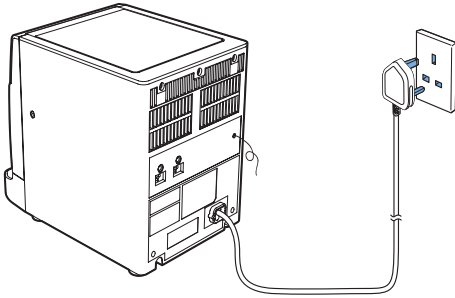


Connect power

Caution

- Risk of product damage! Make sure that the power supply voltage corresponds to the voltage printed on the back or the underside of the Micro Hi-Fi system.
- Before connecting the AC power cord, make sure that you have completed all other connections.

Connect the AC power cable to the power outlet.



4 Get started

Always follow the instructions in this chapter in sequence.

If you contact Philips, you will be asked for the model and serial number of this apparatus. The model number and serial number are on the rear of the apparatus. Write the numbers here:

Model No. _____

Serial No. _____

Prepare the remote control

! Caution

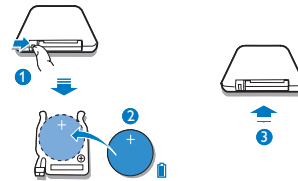
- Risk of explosion! Keep batteries away from heat, sunshine or fire. Never discard batteries in fire.
- Risk of product damage! When the remote control is not used for long periods, remove the batteries.
- Danger of explosion if battery is incorrectly replaced. Replace only with the same or equivalent type.

For first-time use:

Remove the protective tab to activate the remote control battery.

To replace the remote control battery:

- 1 Open the battery compartment.
- 2 Insert one CR2025 battery with correct polarity (+/-) as indicated.
- 3 Close the battery compartment.



Turn on

Press **POWER**.

- ↳ The unit switches to the last selected source.

Switch to standby

Press **POWER** again to switch the unit to standby mode.

- ↳ The red standby indicator turns on.

5 Play

Play from iPod/iPhone

You can enjoy audio from iPod/iPhone through this device.

Compatible iPod/iPhone

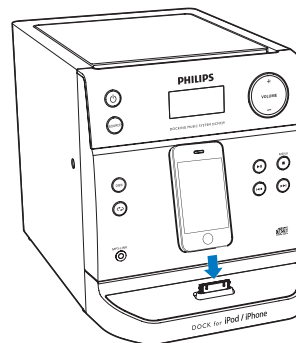
The unit supports the following iPod/iPhone models.

Made for

- iPod classic
- iPod with video
- iPod nano (1st, 2nd, 3rd, 4th, 5th, and 6th generation)
- iPod touch (1st, 2nd, 3rd, and 4th generation)
- iPhone (4th generation)
- iPhone 4
- iPhone 3GS
- iPhone 3G
- iPhone

Load the iPod/iPhone

Insert your iPod/iPhone on the dock.



Charge the iPod/iPhone

When the unit is connected to power, the docked iPod/iPhone begins to charge automatically.

Listen to the iPod/iPhone



Note

- Make sure that your iPod/iPhone has been loaded securely.

- 1 Press **SOURCE** repeatedly to select iPod/iPhone source.
- 2 Play audio on your iPod/iPhone.
 - ↳ The audio in connected iPod/iPhone streams from this device automatically. If not, press **▶||**.

Remove the iPod/iPhone

Pull the iPod/iPhone out of the dock.

Play disc

- 1 Press **SOURCE** repeatedly to select the disc source.
- 2 Open the disc compartment.
- 3 Insert a disc with the printed side facing up.
- 4 Close the disc compartment.
 - ↳ Play starts automatically.
 - To pause or resume play, press **▶||** to pause or resume play.
 - To stop play, press **■**.
 - To skip to another track, press **◀◀ / ▶▶**.
 - To search within a track, press and hold **◀◀ / ▶▶** for three seconds.

Control play

Display play information

During play, press **DISPLAY** repeatedly to display the play information.

Program tracks

You can program a maximum of 20 tracks.

- 1 In disc mode, in the stop position, press **PROG** to activate the program mode.
 - ↳ **[01-]** is displayed.
- 2 Press **◀◀ / ▶▶** to select a track number, and then press **PROG** to confirm.
- 3 Repeat steps 1-2 to select and store more tracks.
- 4 Press **▶||** to play the programmed tracks.
 - To erase the program, in the stop position, press **■**.

Repeat play

- 1 During play, press **REPEAT** repeatedly to select:
 - **[r1]**: play the current track repeatedly.
 - **[rA]**: play all tracks repeatedly.
- 2 To return to normal play, press **REPEAT** repeatedly until repeat mode is no longer displayed.

Enhance bass

During play, press **DBB** to turn on or off dynamic bass enhancement.

- **[DBB-0]**: DBB off
- **[DBB-1]**: DBB on

Adjust volume

During play, press **VOL +/-** to increase or decrease the volume.

Mute sound

During play, press **MUTE** to mute or restore the volume.

6 Listen to radio

Tune to a radio station

Tip

- Position the antenna as far as possible from TV, VCR or other radiation source.
- For optimal reception, fully extend and adjust the position of the antenna.

- 1 Press **SOURCE** repeatedly to select FM source.
- 2 Press and hold **◀◀ / ▶▶** for three seconds.
↳ The radio tunes to a station with strong reception automatically.
- 3 Repeat step 2 to tune to more stations.

To tune to a weak station:

Press **◀◀ / ▶▶** repeatedly until you find optimal reception.

Program radio stations automatically

Note

- You can program a maximum of 20 preset FM radio stations.

In FM mode, press and hold **PROG** for three seconds.

- ↳ The device stores all available FM radio stations and broadcasts the first available station automatically.

Program radio stations manually

Note

- You can program a maximum of 20 preset radio stations.

- 1 Tune to a radio station.
- 2 Press **PROG** to activate program mode.
↳ The preset number is displayed.
- 3 Press **PRESET +/-** to select a number, and then press **PROG** to confirm.
↳ The preset number and the frequency of the preset station are displayed.
- 4 Repeat steps 1-4 to program other stations.

Tip

- To overwrite a programmed station, store another station in its place.

Select a preset radio station

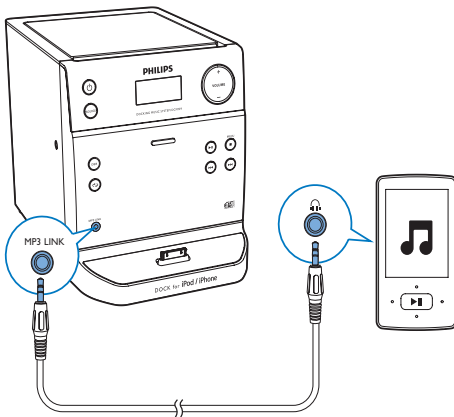
In FM mode, press **PRESET +/-** to select a preset number.

7 Other features

Listen to an external device

You can listen to an external device through this device.

- 1 Press **SOURCE** repeatedly to select **AUX** source.
- 2 Connect the supplied MP3 link cable to:
 - **MP3 LINK** jack (3.5 mm) on the unit
 - the headphone jack on an external device
- 3 Start to play the device (see the device user manual).



8 Product information

Note

- Product information is subject to change without prior notice.

Specifications

Amplifier

Rated Output Power	2 x 2 W RMS
Frequency Response	60 - 16 kHz, ± 3 dB
Signal to Noise Ratio	>50 dBA
Aux Input	0.5 V RMS 20 kohm

Disc

Laser Type	Semiconductor
Disc Diameter	12 cm/8 cm
Support Disc	CD-DA, CD-R, CD-RW
Audio DAC	24 Bits / 44.1 kHz
Total Harmonic Distortion	<1%
Frequency Response	60 Hz -16 kHz (44.1 kHz)
S/N Ratio	>50 dBA

Tuner

Tuning Range	FM: 87.5 - 108 MHz
Tuning grid	50 KHz
Sensitivity	
- Mono, 26dB S/N Ratio	<22 dBf
- Stereo, 46dB S/N Ratio	<43 dBf
Search Selectivity	>28 dBf
Total Harmonic Distortion	<3%
Signal to Noise Ratio	>55 dB

Speakers

Speaker Impedance	4 ohm
Speaker Driver	3 5" full range
Sensitivity	>82 dB/m/W

General information

AC power	220 - 240V, 50/60 Hz
Operation Power Consumption	14 W
Standby Power Consumption	<0,5 W
iPod/iPhone charge	5V, 1A
Dimensions	
- Main Unit (W x H x D)	152 x 174 x 236 mm
- Speaker Box (W x H x D)	132 x 175 x 158 mm
Weight	
- With Packing	3.8 kg
- Main Unit	1.1 kg
- Speaker Box	2 x 0,9 kg

9 Troubleshooting



Warning

- Never remove the casing of this device.

To keep the warranty valid, never try to repair the system yourself.

If you encounter problems when using this device, check the following points before requesting service. If the problem remains unsolved, go to the Philips Web page (www.philips.com/support). When you contact Philips, make sure that the device is nearby and the model number and serial number are available.

No power

- Ensure that the AC power cord of the unit is connected properly.
- Ensure that there is power at the AC outlet.
- As a power-saving feature, the system switches off automatically 15 minutes after track play reaches the end and no control is operated.

No response from the unit

- Disconnect and reconnect the AC power plug, and then turn on the system again.

No sound or poor sound

- Adjust the volume.
- Check if the speakers are connected correctly.
- Check if the stripped speaker wires are clamped.

Remote control does not work

- Before you press any function button, first select the correct source with the remote control instead of the main unit.
- Reduce the distance between the remote control and the unit.
- Insert the battery with its polarities (+/- signs) aligned as indicated.
- Replace the battery.

- Aim the remote control directly at the sensor on the front of the unit.

No disc detected

- Insert a disc.
- Check if the disc is inserted upside down.
- Wait until the moisture condensation at the lens has cleared.
- Replace or clean the disc.
- Use a finalized CD or correct format disc.

Poor radio reception

- Increase the distance between the unit and your TV or VCR.
- Fully extend the antenna.

10 Notice

Any changes or modifications made to this device that are not expressly approved by Philips Consumer Lifestyle may void the user's authority to operate the equipment.



This product complies with the radio interference requirements of the European Community.



Your product is designed and manufactured with high quality materials and components, which can be recycled and reused.



When this crossed-out wheeled bin symbol is attached to a product it means that the product is covered by the European Directive 2002/96/EC.

Please inform yourself about the local separate collection system for electrical and electronic products.

Please act according to your local rules and do not dispose of your old products with your normal household waste. Correct disposal of your old product helps to prevent potential negative consequences for the environment and human health.



Your product contains batteries covered by the European Directive 2006/66/EC, which cannot be disposed with normal household waste. Please inform yourself about the local rules on separate collection of batteries

because correct disposal helps to prevent negative consequences for the environmental and human health.

Environmental information

All unnecessary packaging has been omitted. We have tried to make the packaging easy to separate into three materials: cardboard (box), polystyrene foam (buffer) and polyethylene (bags, protective foam sheet.)

Your system consists of materials which can be recycled and reused if disassembled by a specialized company. Please observe the local regulations regarding the disposal of packaging materials, exhausted batteries and old equipment.



This item incorporates copy protection technology that is protected by U.S. patents and other intellectual property rights of Rovi Corporation. Reverse engineering and disassembly are prohibited.



“Made for iPod” and “Made for iPhone” mean that an electronic accessory has been designed to connect specifically to iPod or iPhone respectively, and has been certified by the developer to meet Apple performance standards. Apple is not responsible for the operation of this device or its compliance with safety and regulatory standards. Please note that the use of this accessory with iPod or iPhone may affect wireless performance. iPod and iPhone are trademarks of Apple Inc., registered in the U.S. and other countries.

This apparatus includes this label:



Class II equipment symbol:



This symbol indicates that this product has a double insulation system.

Note

- The type plate is located on the bottom of the apparatus.



Specifications are subject to change without notice
© 2012 Koninklijke Philips Electronics N.V.
All rights reserved.

DCM129_05_UM_V1.0

