

Register your product and get support at

www.philips.com/welcome

DCM1130



User manual

PHILIPS

Contents

1 Important	3	Listen through headphone	17
Safety	3		
Notice	4		
2 Your Micro Music System	6	8 Product information	18
Introduction	6	Specifications	18
What's in the box	6	USB playability information	18
Overview of the main unit	7	Supported MP3 disc formats	19
Overview of the remote control	8		
3 Get started	10	9 Troubleshooting	20
Connect speakers	10		
Connect power	10		
Prepare the remote control	10		
Turn on	11		
Set clock	11		
4 Play	12		
Basic play operations	12		
Play from disc	12		
Play from USB	12		
Adjust sound	13		
5 Play iPod/iPhone	14		
Compatible iPod/iPhone	14		
Load the iPod/iPhone	14		
Charge the iPod/iPhone	14		
Listen to the iPod/iPhone	14		
Remove the iPod/iPhone	14		
6 Listen to FM radio	15		
Tune to FM radio stations	15		
Program radio stations automatically	15		
Program radio stations manually	15		
Tune to a preset radio station	15		
Show RDS information	15		
7 Other features	17		
Set alarm timer	17		
Set sleep timer	17		
Listen to external audio device	17		

1 Important

Safety

Know these safety symbols



This 'bolt of lightning' indicates uninsulated material within your unit may cause an electrical shock. For the safety of everyone in your household, please do not remove product covering.

The 'exclamation point' calls attention to features for which you should read the enclosed literature closely to prevent operating and maintenance problems.

WARNING: To reduce the risk of fire or electric shock, this apparatus should not be exposed to rain or moisture and objects filled with liquids, such as vases, should not be placed on this apparatus.

CAUTION: To prevent electric shock, match wide blade of plug to wide slot, fully insert.

Important Safety Instructions

- Heed all warnings.
- Follow all instructions.
- Do not use this device near water.
- Clean only with dry cloth.
- Do not block any ventilation openings. Install in accordance with the manufacturer's instructions.
- Do not install near any heat sources such as radiators, heat registers, stoves, or other devices (including amplifiers) that produce heat.
- Protect the power cord from being walked on or pinched, particularly at plugs, convenience receptacles, and the point where they exit from the device.
- Only use attachments/accessories specified by the manufacturer.
- Unplug this device during lightning storms or when unused for long periods of time.
- Refer all servicing to qualified service personnel. Servicing is required when the device has been damaged in any way, such as power-supply cord or plug is damaged, liquid has been spilled or objects have fallen into the device, the device has been exposed to rain or moisture, does not operate normally, or has been dropped.
- Battery usage **CAUTION** – to prevent battery leakage which may result in bodily injury, property damage, or damage to the unit:
 - Install all batteries correctly, + and - as marked on the unit.
 - Do not mix batteries (old and new or carbon and alkaline, etc.).
 - Remove batteries when the unit is not used for a long time.
 - Batteries (battery pack or batteries installed) shall not be exposed to excessive heat such as sunshine, fire, or the like.
- Devices shall not be exposed to dripping or splashing.
- Do not place any sources of danger on the device (e.g. liquid filled objects, lighted candles).
- Where the MAINS plug or an appliance coupler is used as the disconnect device, the disconnect device shall remain readily operable.



Warning

- Never remove the casing of this apparatus.
- Never lubricate any part of this apparatus.
- Never place this apparatus on other electrical equipment.
- Never look into the laser beam inside this apparatus.
- Make sure that you always have easy access to the power cord, plug, or adaptor to disconnect the apparatus from the power.



Caution

- Use of controls or adjustments or performance of procedures other than herein may result in hazardous radiation exposure or other unsafe operation.

Hearing safety

Listen at a moderate volume.

- Using headphones at a high volume can impair your hearing. This product can produce sounds in decibel ranges that may cause hearing loss for a normal person, even for exposure less than a minute. The higher decibel ranges are offered for those that may have already experienced some hearing loss.
- Sound can be deceiving. Over time your hearing 'comfort level' adapts to higher volumes of sound. So after prolonged listening, what sounds 'normal' can actually be loud and harmful to your hearing. To guard against this, set your volume to a safe level before your hearing adapts and leave it there.

To establish a safe volume level:

- Set your volume control at a low setting.
- Slowly increase the sound until you can hear it comfortably and clearly, without distortion.

Listen for reasonable periods of time:

- Prolonged exposure to sound, even at normally 'safe' levels, can also cause hearing loss.

- Be sure to use your equipment reasonably and take appropriate breaks.

Be sure to observe the following guidelines when using your headphones.

- Listen at reasonable volumes for reasonable periods of time.
- Be careful not to adjust the volume as your hearing adapts.
- Do not turn up the volume so high that you can't hear what's around you.
- You should use caution or temporarily discontinue use in potentially hazardous situations. Do not use headphones while operating a motorized vehicle, cycling, skateboarding, etc.; it may create a traffic hazard and is illegal in many areas.

Notice



This product complies with the radio interference requirements of the European Community.

This product complies with the requirements of the following directives and guidelines: 2004/108/EC + 2006/95/EC

Any changes or modifications made to this device that are not expressly approved by Philips Consumer Lifestyle may void the user's authority to operate the equipment.



Your product is designed and manufactured with high quality materials and components, which can be recycled and reused.



When this crossed-out wheeled bin symbol is attached to a product it means that the product

is covered by the European Directive 2002/96/EC.

Please inform yourself about the local separate collection system for electrical and electronic products.

Please act according to your local rules and do not dispose of your old products with your normal household waste. Correct disposal of your old product helps to prevent potential negative consequences for the environment and human health.



Your product contains batteries covered by the European Directive 2006/66/EC, which cannot be disposed with normal household waste. Please inform yourself about the local rules on separate collection of batteries because correct disposal helps to prevent negative consequences for the environmental and human health.

Environmental information

All unnecessary packaging has been omitted. We have tried to make the packaging easy to separate into three materials: cardboard (box), polystyrene foam (buffer) and polyethylene (bags, protective foam sheet.)

Your system consists of materials which can be recycled and reused if disassembled by a specialized company. Please observe the local regulations regarding the disposal of packaging materials, exhausted batteries and old equipment.



The making of unauthorized copies of copy-protected material, including computer programs, files, broadcasts and sound recordings, may be an infringement of copyrights and constitute a criminal offence. This equipment should not be used for such purposes.



“Made for iPod” and “Made for iPhone” mean that an electronic accessory has been designed to connect specifically to iPod or iPhone respectively, and has been certified by the developer to meet Apple performance standards. Apple is not responsible for the operation of this device or its compliance with safety and regulatory standards. Please note that the use of this accessory with iPod or iPhone may affect wireless performance. iPod and iPhone are trademarks of Apple Inc., registered in the U.S. and other countries.

This apparatus includes this label:



Note

- The type plate is located on the back of the unit.

2 Your Micro Music System

Congratulations on your purchase, and welcome to Philips! To fully benefit from the support that Philips offers, register your product at www.philips.com/welcome.

Introduction

With this unit, you can:

- Enjoy audio from discs, USB devices, iPod, iPhone, and other external devices;
- Listen to radio stations.

You can enrich sound output with these sound effects:

- Digital Sound Control (DSC)
- Dynamic Bass Boost (DBB)

The unit supports these media formats:

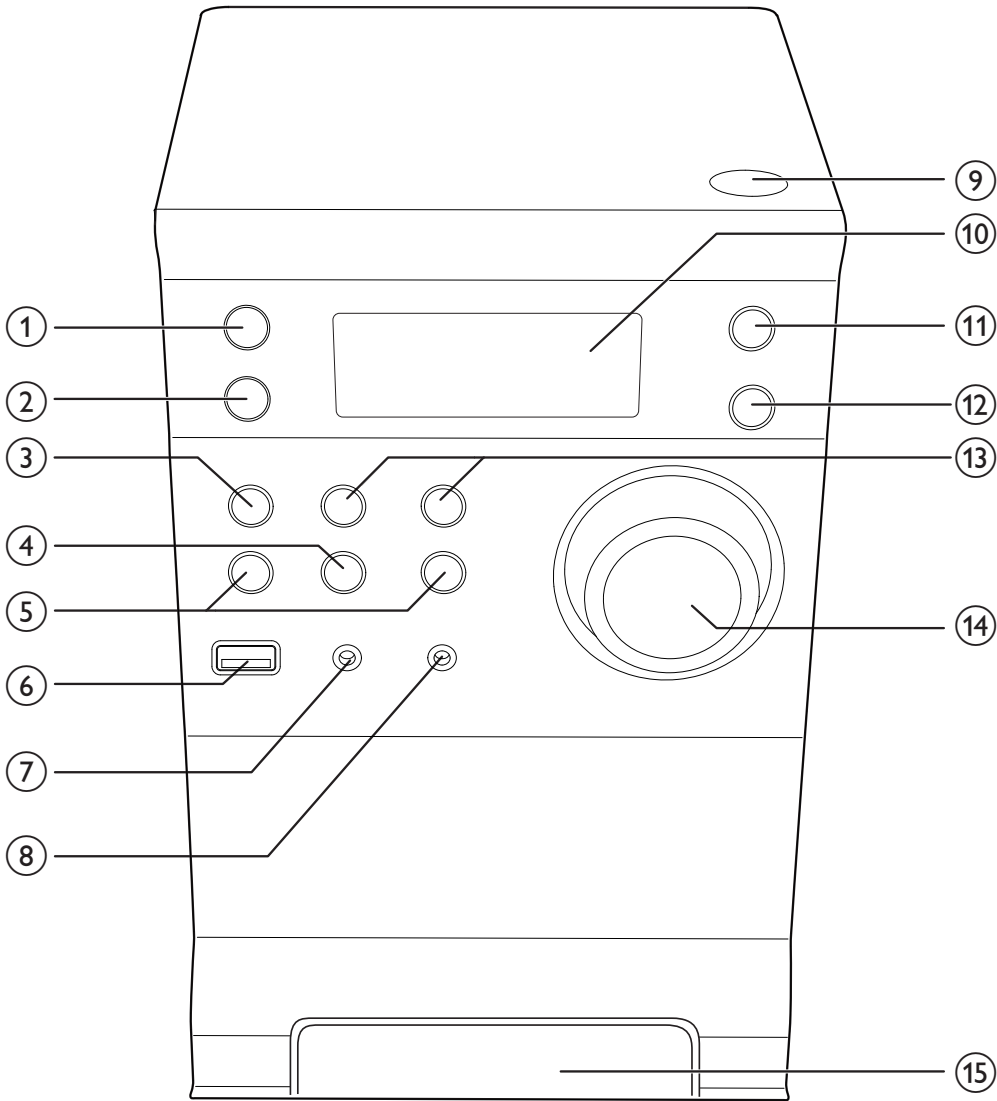


What's in the box

Check and identify the contents of your package:

- Main unit
- 2 X speaker boxes
- Remote control
- MP3 link cable
- Quick start guide
- User manual

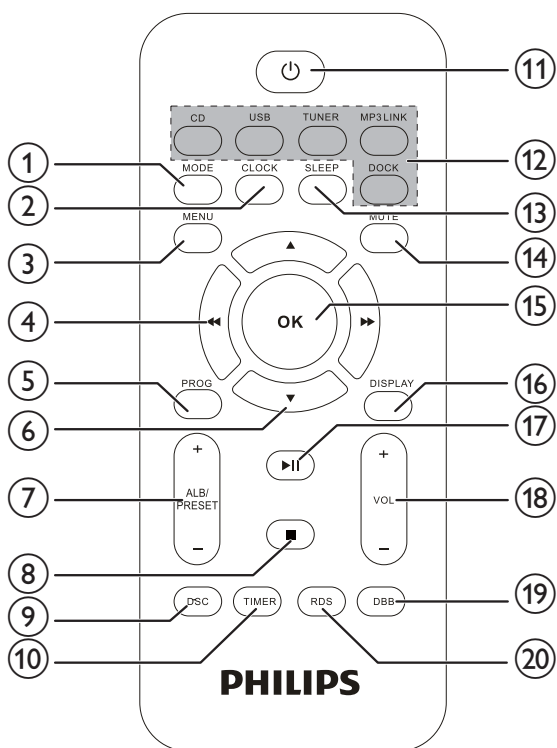
Overview of the main unit



- ①
 - Turn on the main unit.
 - Switch to standby mode.
- ② **SOURCE**
 - Select a source.
- ③ **STOP**
 - Stop play or erase a program.
- ④ **PLAY/PAUSE**
 - Start or pause play.
- ⑤ **PREVIOUS/NEXT**
 - Skip to the previous/next track.
 - Fast reverse or fast forward within a track or disc.
- ⑥
 - Connect to USB storage device.
- ⑦ **MP3-LINK**
 - Connect to an external audio device.
- ⑧
 - Connect to a headphone.
- ⑨
- ⑩
- ⑪
- ⑫
- ⑬
- ⑭
- ⑮

- ⑨ ▲
 - Open/close the disc compartment.
- ⑩ **Display panel**
 - Show current status.
- ⑪ **MODE**
 - Select repeat/shuffle play modes in CD, or USB source.
- ⑫ **CLOCK**
 - Set clock.
- ⑬ **ALB/PRESET+/-**
 - Select a preset radio station.
 - Skip to the previous/next album.
- ⑭ **VOLUME(Volume knob)**
 - Adjust volume.
- ⑮ **Dock base for iPod/iPhone**

Overview of the remote control



- ① **MODE**
 - Select repeat/shuffle play modes in CD, or USB source.
- ② **CLOCK**
 - Set clock.
- ③ **MENU**
 - Access iPod/iPhone menu.
- ④ ◀ / ▶
 - Fast reverse or fast forward within a track or disc.
 - Skip to the previous/next track.
 - Tune to a radio station.
 - Adjust time.
- ⑤ **PROG**
 - Program tracks.
 - Program radio stations.
- ⑥ ▲ / ▼
 - Navigate through iPod/iPhone menu.
- ⑦ **ALB/PRESET+/-**
 - Skip to the previous/next album.
 - Select a preset radio station.
- ⑧ ■
 - Stop play or erase a program.
- ⑨ **DSC**
 - Select a preset sound setting: POP, JAZZ, ROCK or CLASSIC.
- ⑩ **TIMER**
 - Set the alarm timer.
- ⑪ Power button
 - Turn on the main unit.
 - Switch to standby mode.
- ⑫ **Source selection keys**
 - Select a source.
- ⑬ **SLEEP**
 - Set the sleep timer.
- ⑭ **MUTE**
 - Mute volume.
- ⑮ **OK**
 - Confirm one selection.

- ⑩ **DISPLAY**
 - Show playback information.
- ⑪ **▶||**
 - Start or pause play.
- ⑫ **VOL +/-**
 - Adjust volume.
- ⑬ **DBB**
 - Turns on or off dynamic bass enhancement.
- ⑭ **RDS**
 - For selected FM radio stations: display RDS information.

3 Get started

! Caution

- Use of controls or adjustments or performance of procedures other than herein may result in hazardous radiation exposure or other unsafe operation.

Always follow the instructions in this chapter in sequence.

If you contact Philips, you will be asked for the model and serial number of this apparatus. The model number and serial number are on the bottom of the apparatus. Write the numbers here:

Model No. _____

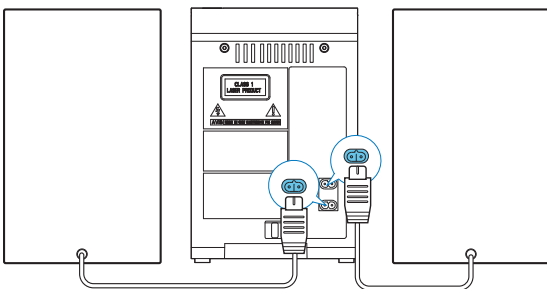
Serial No. _____

Connect speakers

≡ Note

- For optimal sound, use the supplied speakers only.
- Connect only speakers with impedance that is the same or higher than the supplied speakers. Refer to the Specifications section of this manual.

Insert the speaker wires completely into the speaker input sockets on the back of the unit.

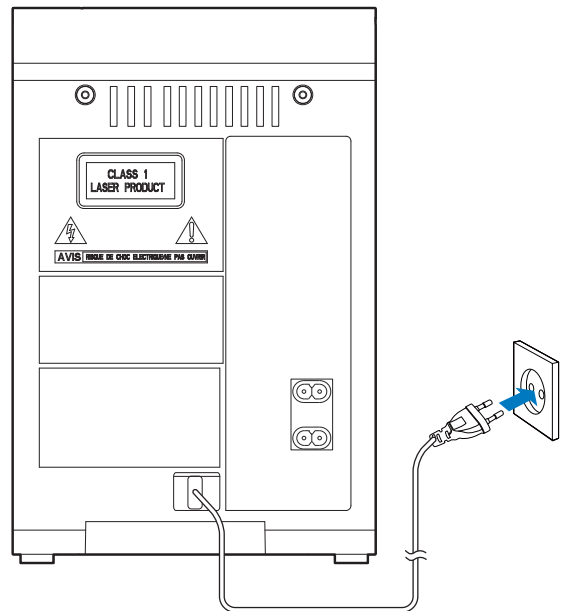


Connect power

! Caution

- Risk of product damage! Ensure that the power supply voltage corresponds to the voltage printed on the back or the underside of the unit.
- Risk of electric shock! When you unplug the AC power cord, always pull the plug from the socket. Never pull the cord.
- Before you connect the AC power cord, ensure that you have completed all other connections.

Connect the power cable to the wall socket.



Prepare the remote control

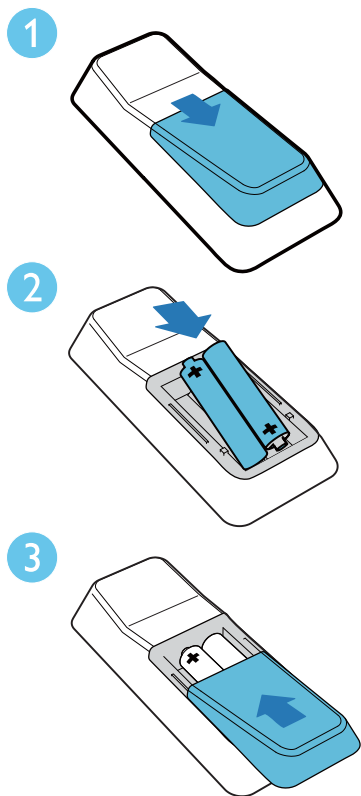
! Caution

- Risk of explosion! Keep batteries away from heat, sunshine or fire. Never discard batteries in fire.
- Risk of decreased battery life! Never mix different brands or types of batteries.
- Risk of product damage! When the remote control is not used for long periods, remove the batteries.
- Danger of explosion if battery is incorrectly replaced. Replace only with the same or equivalent type.

To insert the remote control battery:

- 1 Open the battery compartment.

- 2 Insert 2 AAA batteries with correct polarity (+/-) as indicated.
- 3 Close the battery compartment.



Turn on

Press **⏻** to turn on.

- ↳ The unit switches to the last selected source.



Tip

- In standby mode, you can also press **source selection keys** to switch on the unit.

Switch to standby mode

Press **⏻** again to switch the unit to standby mode.

- ↳ The clock (if set) appears on the display panel.

Note

- When the unit remains idle for 15 minutes, it switches from standby mode automatically.

Set clock

- 1 In standby mode, press and hold **CLOCK** on the remote control to activate the clock setting mode.
 - ↳ The 12/24 hour format blinks.
- 2 Press **◀/▶** repeatedly to select the format.
 - ↳ The hour digits are displayed and begin to blink.
- 3 Press **◀/▶** to set the hour.
- 4 Press **CLOCK**.
 - ↳ The minute digits are displayed and begin to blink.
- 5 Press **◀/▶** to set the minute.
- 6 Press **CLOCK** to confirm.
 - To exit clock setting mode without storing, press **■**.
- 7 To view the clock, press **CLOCK**.

Note

- After 90 seconds in idle mode (no button is pressed), the system exits the clock setting mode automatically.

4 Play

Basic play operations

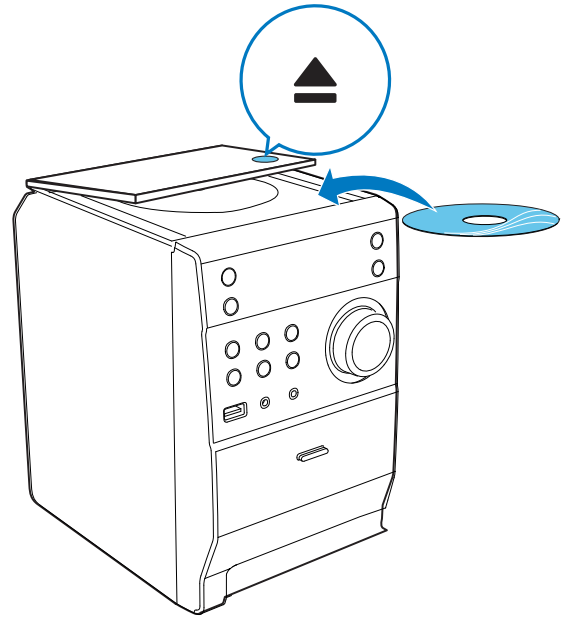
You can control play through following operations.

Key	Function
◀◀ / ▶▶	To select a track or file. Press and hold to fast-forward/fast-backward the track during playback, then release to resume play.
▶	To pause/resume play during playback.
DISPLAY	To show different play information.
MODE	To select a repeat play mode: [REP] (repeat): play current track repeatedly. [REP ALL] (repeat all): play all tracks repeatedly. [SHUF](shuffle): play tracks randomly. Press repeatedly to return to normal play.

You can also use numeric keys to select a track directly.

Play from disc

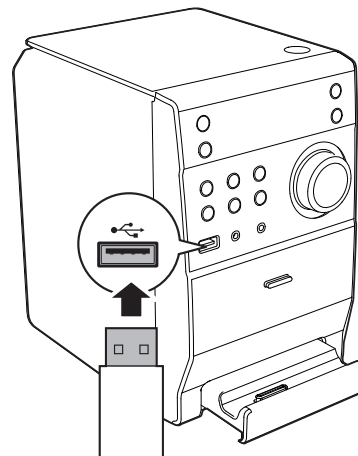
- 1 Press **CD** to select the CD source.
- 2 Press **▲**.
↳ The disc compartment opens.
- 3 Place a disc with the printed side facing up, then close the disc compartment.
- 4 Play starts automatically.
 - If play does not start, press **◀◀ / ▶▶** to select a track, then press **▶||**.



Play from USB

Ensure that the USB device contains playable audio contents for supported formats.

- 1 Insert the USB device into the USB socket.
- 2 Press **USB** to select the USB source.
↳ Play starts automatically. If not, press **◀◀ / ▶▶** to select a file. Then press **▶||** to start play.



Adjust sound

During play, you can adjust volume through following operations.

Key	Function
VOL +/-	To increase/decrease the volume.
MUTE	To mute/restore sound.
DBB	To turn on or off dynamic bass enhancement. If DBB is activated, [DBB] is displayed.
DSC	To select your desired sound effect: [POP] (pop) [JAZZ] (jazz) [CLASSIC] (classic) [ROCK] (rock)

5 Play iPod/iPhone

This system is equipped with a dock for iPod/iPhone. You can enjoy audio from the docked system through the powerful speakers.

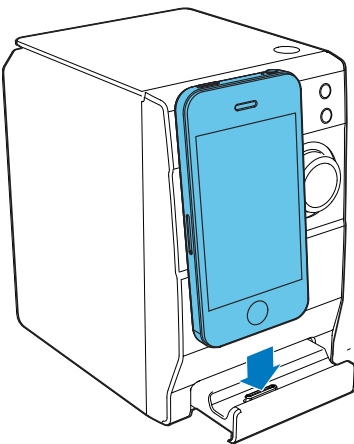
Compatible iPod/iPhone

The unit supports these iPod/iPhone models:
Made for:

- iPod touch (1st, 2nd, 3rd, and 4th generation)
- iPod classic
- iPod nano (1st, 2nd, 3rd, 4th, 5th, and 6th generation)
- iPhone 4S
- iPhone 4
- iPhone 3GS
- iPhone 3G
- iPhone

Load the iPod/iPhone

- 1 Push to open the dock base.
- 2 Load the iPod/iPhone onto the dock.



Charge the iPod/iPhone

When the unit is connected to power, the docked iPod/iPhone starts charging automatically.

Note

- iPod classic is not compatible with dock charging.

Tip

- For certain iPod models, it may take up to a minute before the charging indication appears.

Listen to the iPod/iPhone

- 1 Press **DOCK** to select the iPod/iPhone source.
- 2 Play the selected track on your docked iPod/iPhone.
 - To pause/resume the play, press **▶||**.
 - To search during play: press and hold **◀◀ / ▶▶**, and then release to resume normal play.
 - To scroll through the menu, press **▲ / ▼**.
 - To confirm a selection, press **OK** to confirm.

Remove the iPod/iPhone

- 1 Unload the iPod/iPhone from the dock.
- 2 Close the dock base.

6 Listen to FM radio

Tune to FM radio stations

Note

- Make sure that you have connected and fully extended the supplied FM antenna.

- 1 Press **TUNER**.
- 2 Press and hold **◀▶** for two seconds to tune to a radio station.
- 3 When the frequency starts to change, release the button.
 - ↳ The FM tuner tunes to a station with strong reception automatically.
- 4 Repeat steps 2-3 to tune to more stations.

To tune to a weak station:

Press **◀▶** repeatedly until you find optimal reception.

Program radio stations automatically

Note

- You can program a maximum of 20 preset radio stations.

- In FM tuner mode, press **PROG** for 3 seconds to activate automatic programming.
- ↳ **[AUTO]** (auto) is displayed.
 - ↳ The unit stores all the FM radio stations automatically and then broadcasts the first preset radio station.

Program radio stations manually

Note

- You can program a maximum of 20 preset radio stations.

- 1 Tune to a radio station.
- 2 Press **PROG** to activate programming mode.
- 3 Press **ALB/PRESET+/-** to select a number from 1 to 20 for this radio station, then press **PROG** to confirm.
 - ↳ The preset number and the frequency of the preset station are displayed.
- 4 Repeat steps 2-3 to program other stations.

Note

- To overwrite a programmed station, store another station in its place.

Tune to a preset radio station

Press **ALB/PRESET+/-** to select a preset number.

Show RDS information

RDS (Radio Data System) is a service that allows FM stations to show additional information. If you tune to an RDS station, an RDS icon and the station name are displayed.

- 1 Tune to an RDS station.

- 2 Press **RDS** repeatedly to scroll through the following information (if available):
 - ↳ Station name
 - ↳ Program type such as **[NEWS]** (news), **[SPORT]** (sport), **[POP M]** (pop music)...
 - ↳ Radio text
 - ↳ Frequency

Synchronize clock with RDS

You can synchronize time shown on the unit with that on the RDS station.

- 1 Tune to a RDS radio station that transmits time signals.
- 2 Press **RDS** for over 2 seconds.
 - ↳ **[CT SYNC]** is displayed and the unit reads RDS time automatically.
 - ↳ If no time signal is received, **[NO CT]** is displayed.



Note

- The accuracy of the transmitted time depends on the RDS station that transmits the time signal.

7 Other features

Set alarm timer

This unit can be used as an alarm clock. You can select DISC, USB, FMTUNER, or DOCK as alarm source.

Note

- Make sure that you have set the time correctly.

- 1 In standby mode, press and hold **TIMER** until **[TIMER SET]**(timer set) scrolls on the display.
↳ **[SELECT SOURCE]** (select source) scrolls on the screen.
- 2 Press **SOURCE** repeatedly to select a source: DISC, USB, FMTUNER, or DOCK.
- 3 Press **TIMER** to confirm.
↳ The hour digits are displayed and begin to blink.
- 4 Press **◀/▶** repeatedly to set hour, then press **TIMER** again to confirm.
↳ The minute digits are displayed and begin to blink.
- 5 Press **◀/▶** to set minute, then press **TIMER** to confirm.
↳ **⌚** is displayed.

Activate/deactivate alarm timer

In standby mode, press **TIMER** repeatedly to activate or deactivate timer:

- ↳ If timer is activated, **⌚** is displayed.

Note

- Alarm timer is not available in MP3 LINK mode.
- If DISC/USB/DOCK source is selected, yet no disc is placed or no USB/iPod/iPhone is connected, the system switches to the tuner source automatically.

Set sleep timer

When the unit is turned on, press **SLEEP** repeatedly to select a time period (in minutes).

- ↳ When sleep timer is activated, **zZ** is displayed.
- ↳ To deactivate sleep timer, press **SLEEP** again until **zZ** disappears.

Listen to external audio device

You can listen to an external audio device such as MP3 player through this unit.

- 1 Connect the audio device.
 - For audio device with headphone sockets:
Connect MP3 Link cable to the **MP3-LINK** socket and to the headphone socket on the audio device.
- 2 Select **MP3-LINK** source.
- 3 Play the device.

Listen through headphone

Plug a headphone into the **🎧** socket on the unit.

8 Product information



Note

- Product information is subject to change without prior notice.

Specifications

Amplifier

Rated Output Power	2X5W RMS
Frequency Response	60 - 16 kHz, ± 3 dB
Signal to Noise Ratio	>65 dB
Aux Input	0.5 V RMS 20kohm

Disc

Laser Type	Semiconductor
Disc Diameter	12cm/8cm
Support Disc	CD-DA, CD-R, CD-RW, MP3-CD
Audio DAC	24Bits / 44.1 kHz
Total Harmonic Distortion	<1%
Frequency Response	60 Hz -16 kHz (44.1 kHz)
S/N Ratio	>65dBA

Tuner

Tuning Range	FM: 87.5 - 108 MHz
Tuning Grid	50 KHz
Sensitivity	- Mono, 26 dB S/N Ratio < 22 dBf

Search selectivity	< 36 dBu
Total harmonic distortion	< 3 %
Signal to noise ratio	> 45 dB

Speakers

Speaker Impedance	4 ohm
Speaker Driver	3.5"
Sensitivity	>82dB/m/W

General information

AC power	100-240V, 50/60 Hz
Operation Power Consumption	20 W
Standby Power Consumption	< 1 W
Dimensions	
- Main Unit (W x H x D)	150 x 227 x 208.5 mm
- Speaker Box (W x H x D)	140 X 227 x 158.6 mm
Weight	
- Main Unit	1.415 kg
- Speaker Box	2 x 1.058 kg

USB playability information

Compatible USB storage devices:

- USB flash memory (USB 2.0 or USB1.1)
- USB flash players (USB 2.0 or USB1.1)
- memory cards (requires an additional card reader to work with this apparatus)

Supported formats:

- USB or memory file format FAT12, FAT16, FAT32 (sector size: 512 bytes)
- MP3 bitrate (data rate): 32-320 Kbps and variable bitrate
- Directory nesting up to a maximum of 8 levels
- Number of albums/ folders: maximum 99
- Number of tracks/titles: maximum 999

- ID3 tag v2.0 or later
- File name in Unicode UTF8 (maximum length: 32 bytes)

Unsupported formats:

- Empty albums: an empty album is an album that does not contain MP3/WMA files.
- Unsupported file formats are skipped. For example, Word documents (.doc) or MP3 files with extension .dlf are ignored and not played.
- AAC, WAV, PCM audio files
- DRM protected WMA files (*.wav, *.m4a, *.m4p, *.mp4, *.aac)
- WMA files

Supported MP3 disc formats

- ISO9660, Joliet
- Maximum title number: 512 (depending on file name length)
- Maximum album number: 255
- Supported sampling frequencies: 32 kHz, 44.1kHz, 48 kHz
- Supported Bit-rates: 32~256 (kbps), variable bit rates

9 Troubleshooting



Warning

- Never remove the casing of this apparatus.

To keep the warranty valid, never try to repair the system yourself.

If you encounter problems when using this apparatus, check the following points before requesting service. If the problem remains unsolved, go to the Philips web site (www.philips.com/welcome). When you contact Philips, ensure that the apparatus is nearby and the model number and serial number are available.

No power

- Ensure that the AC power cord of the unit is connected properly.
- Ensure that there is power at the AC outlet.
- As a power-saving feature, the system switches off automatically 15 minutes after track play reaches the end and no control is operated.

Remote control does not work

- Before you press any function button, first select the correct source with the remote control instead of the main unit.
- Reduce the distance between the remote control and the unit.
- Insert the battery with its polarities (+/- signs) aligned as indicated.
- Replace the battery.
- Aim the remote control directly at the sensor on the front of the unit.

No disc detected

- Insert a disc.
- Check if the disc is inserted upside down.
- Wait until the moisture condensation at the lens has cleared.
- Replace or clean the disc.
- Use a finalized CD or correct format disc.

No sound or poor sound

- Adjust the volume.
- Disconnect the headphones.
- Check if the speakers are connected correctly.

No response from the unit

- Disconnect and reconnect the AC power plug, then turn on the unit again.
- As a power-saving feature, the system switches off automatically 15 minutes after track play reaches the end and no control is operated.

Cannot display some files in USB device

- The number of folders or files in the USB device has exceeded a certain limit. This phenomenon is not a malfunction.
- The formats of these files are not supported.

USB device not supported

- The USB device is incompatible with the unit. Try another one.

Poor radio reception

- Increase the distance between the unit and your TV or VCR.
- Fully extend the FM antenna.
- Connect an outdoor FM antenna instead.

Timer does not work

- Set the clock correctly.
- Switch on the timer.

Clock/timer setting erased

- Power has been interrupted or the power cord has been disconnected.
- Reset the clock/timer.



Specifications are subject to change without notice
© 2012 Koninklijke Philips Electronics N.V.
All rights reserved.

DCM1130_12_CCR_V1.0

