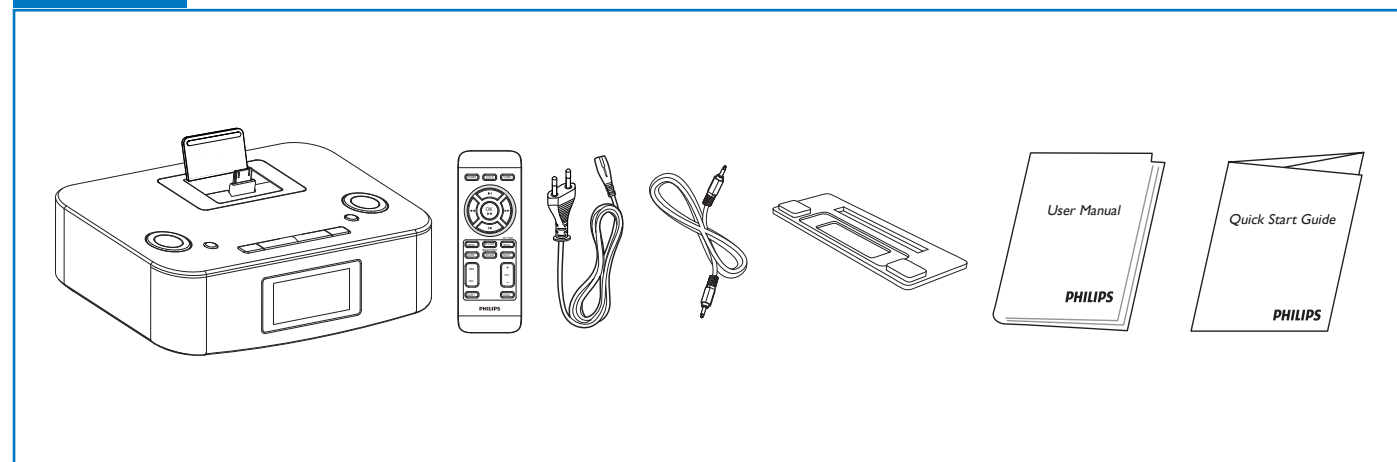


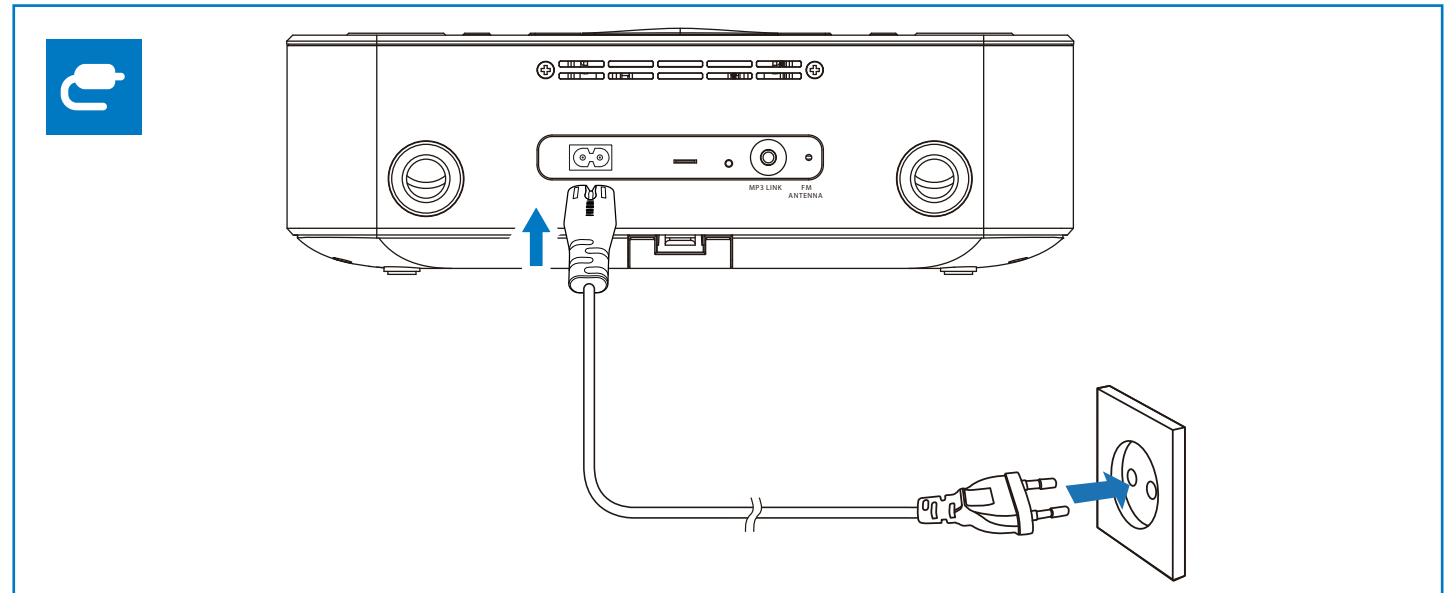
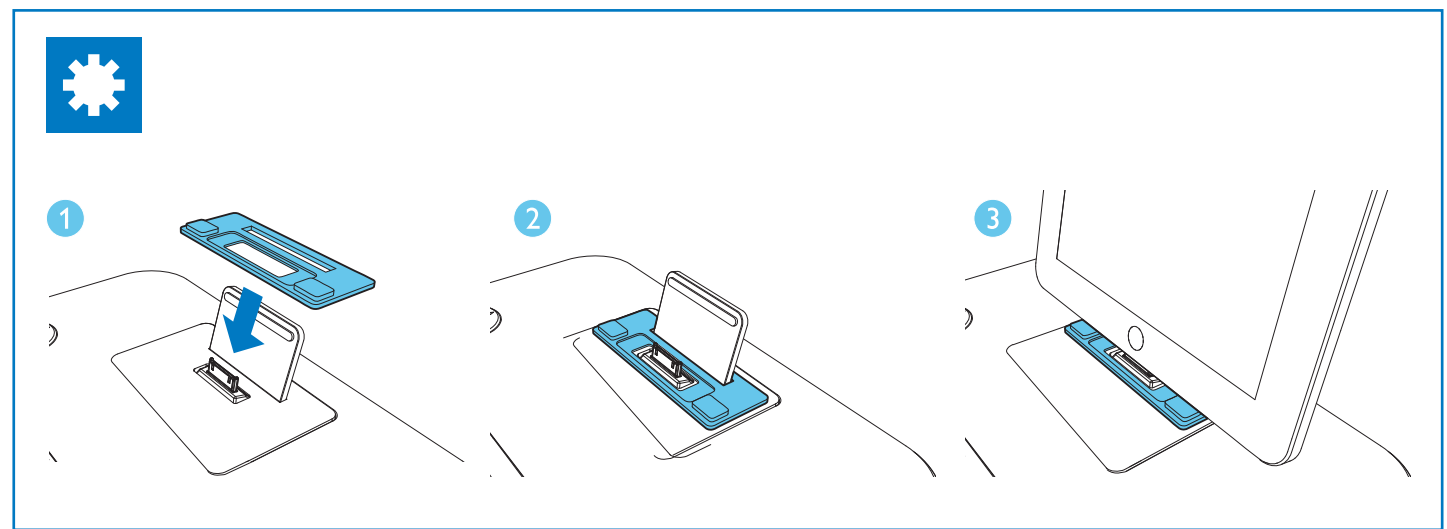
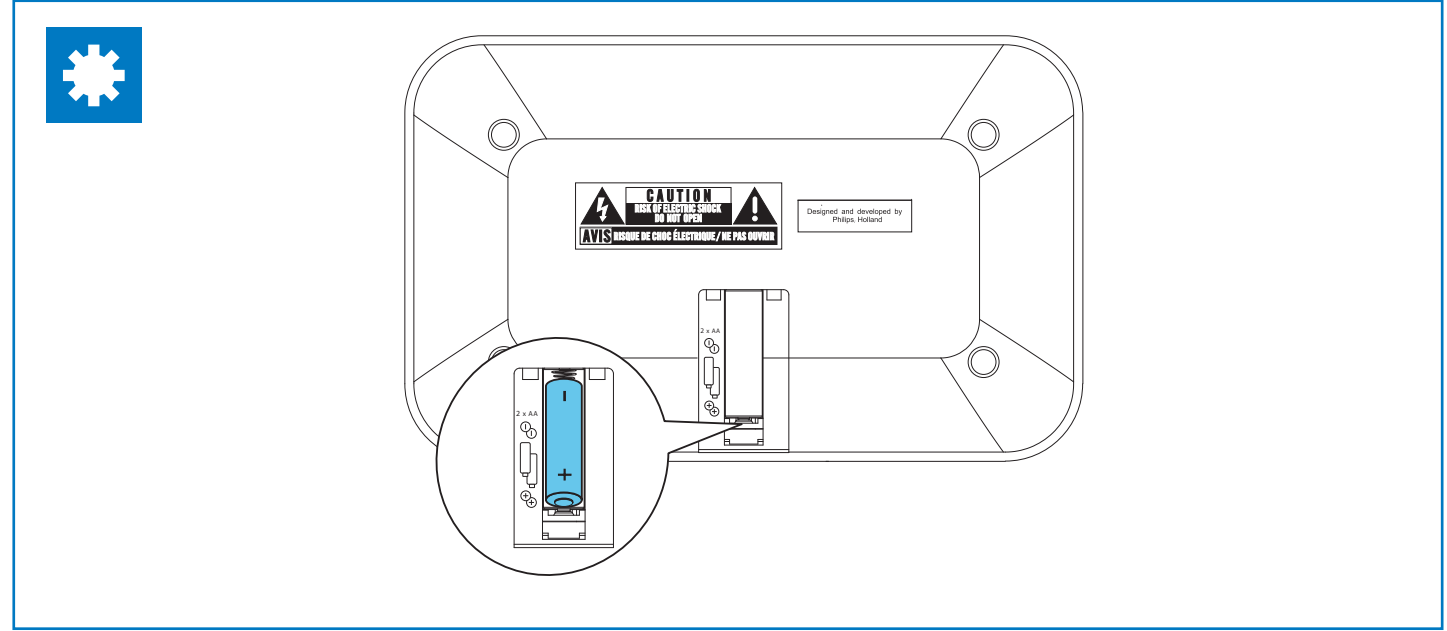
Register your product and get support at www.philips.com/welcome

DC291



PHILIPS

1



2

SET TIME
PROG 2 sec.

OK

▶

◀

SET TIME
PROG

▶

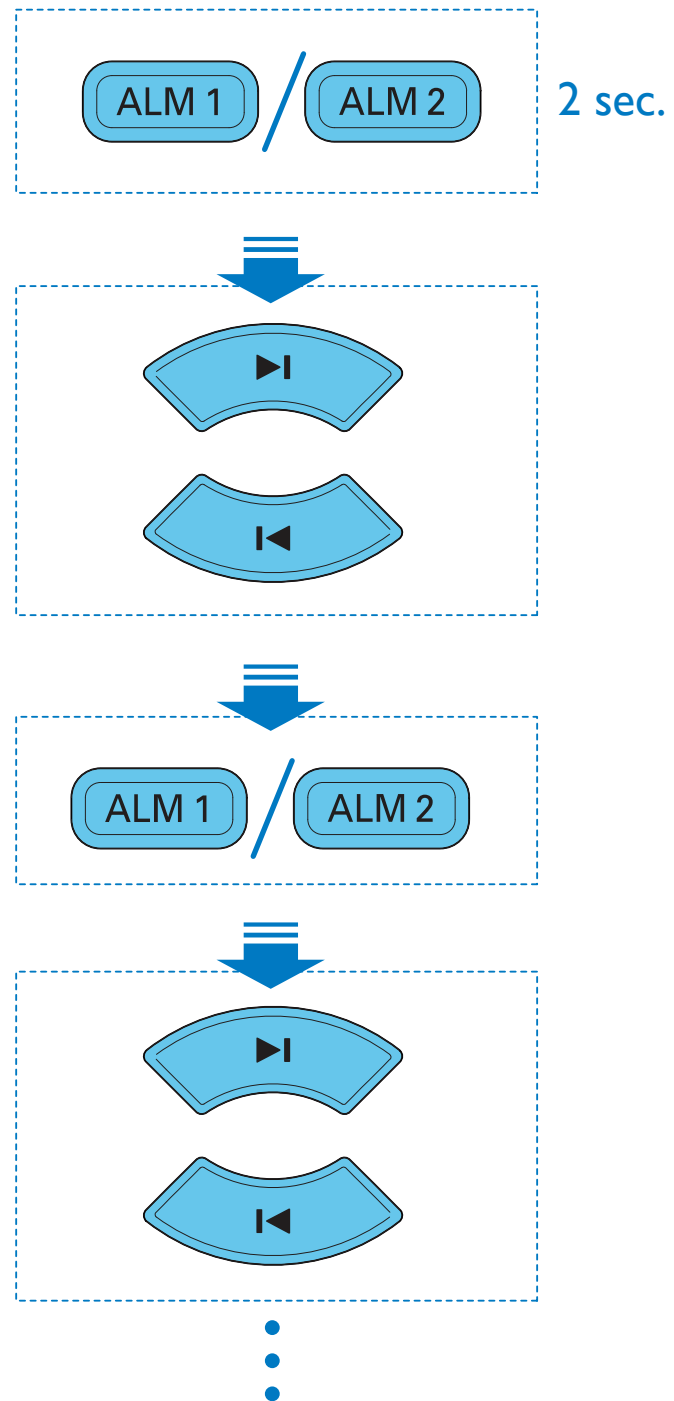
◀

⋮

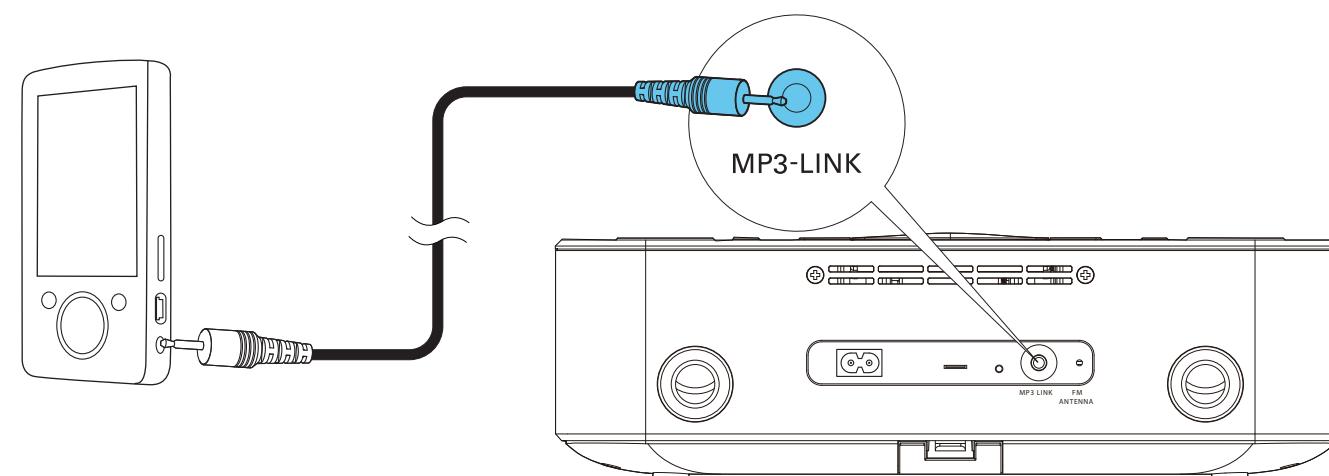
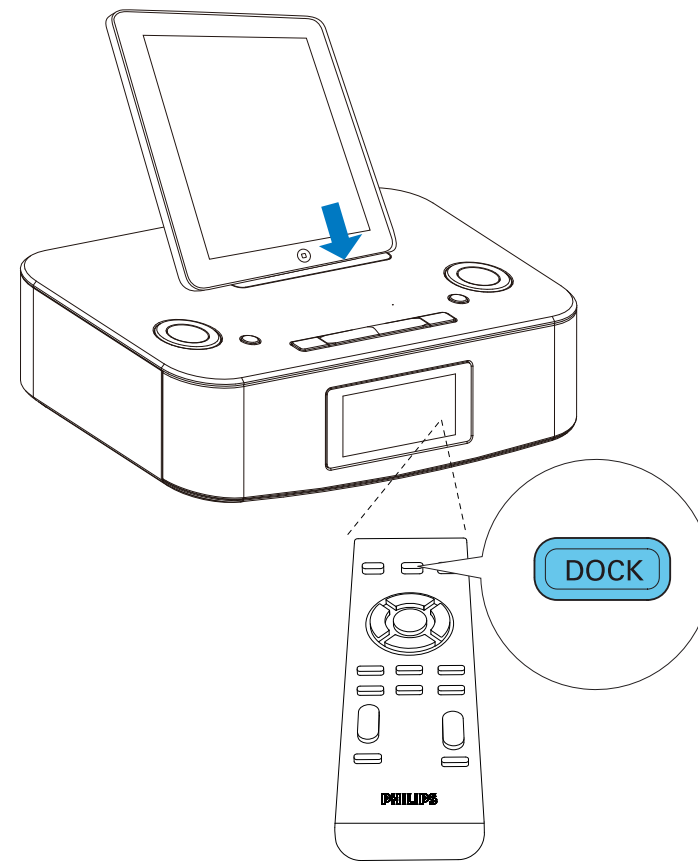
The diagram shows a remote control with the following buttons: POWER, DOCK, TUNER, MENU, MP3 LINK, PROG, SLEEP, BRIGHTNESS, REP ALM, MUTE, DBB, DSC, + VOL, - VOL, ALM 1, ALM 2, and PHILIPS. The sequence of actions is: 1. Press the PROG button for 2 seconds. 2. Press the OK button. 3. Press the right arrow button. 4. Press the left arrow button. 5. Press the PROG button. 6. Press the right arrow button. 7. Press the left arrow button. 8. Press the three-dot menu button.



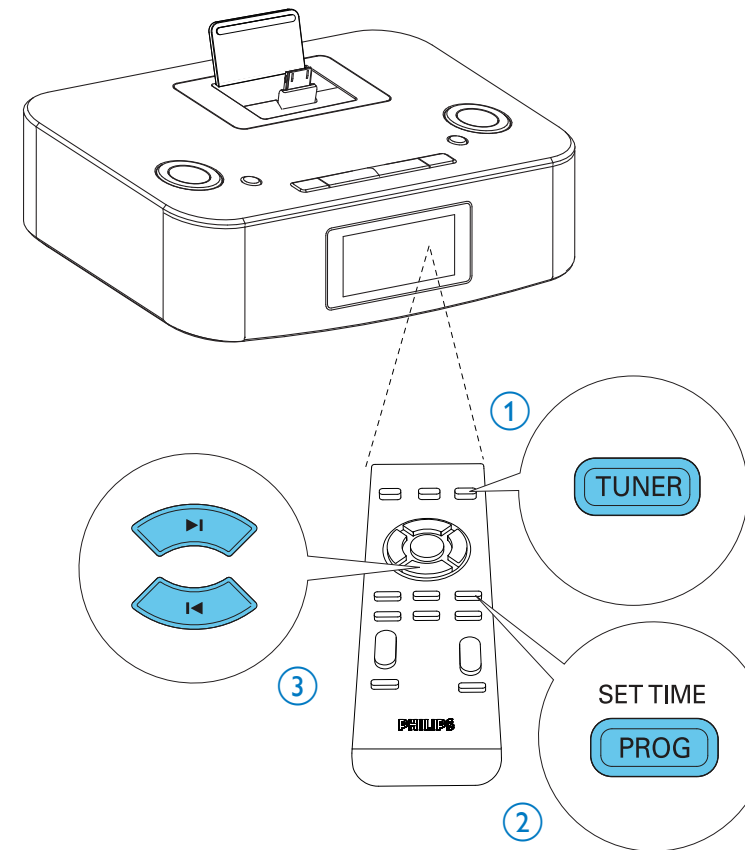
3



4



5



Specifications are subject to change without notice.
2013 © WOOX Innovations Limited. All rights reserved.
Philips and the Philips' Shield Emblem are registered trademarks of Koninklijke Philips N.V. and are used by WOOX Innovations Limited under license from Koninklijke Philips N.V.

