

## Radio reception

1

To switch on the set, press and hold **▶/||/⏻**.

2

Press **◀▶** to select the DAB radio mode, and then press **▶/||/⏻**.

3

To scan for DAB radio stations, press **REC/SCAN** to select an option, and then press **▶** or **▶/||/⏻**.

## Tip

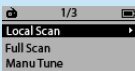
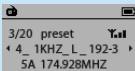
Detailed playback features and additional functions are described in the accompanied user manual.



Be responsible  
Respect copyrights

© Royal Philips Electronics N.V. 2007  
All rights reserved.

www.philips.com



## Quick Start Guide



## What's in the box



Portable DAB Radio



USB cable



2 x AAA battery



Headphones



2 x changeable back cover

A

Install/Connect

B

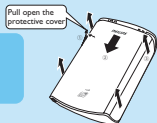
Enjoy

# A

## Install/Connect

### Inserting batteries

Remove the back cover and then insert 2 x AAA batteries with the correct polarity as indicated.




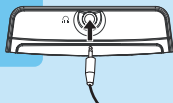
### Changing the back cover

Remove the back cover and then install a desired changeable back cover (supplied, red/blue).



### Connecting headphones

Connect the supplied headphones to the  socket of the player.



### Transfer

Your player appears as a USB mass storage device on your computer. You can manage files and transfer music to your player during USB connection.

1

Use the supplied USB cable to connect your player to a computer.

2

Click and highlight one or more songs to transfer between your player and your computer.

3

Use drag and drop actions to complete your transfer.

# B

## Enjoy

### Playing stored music

1

In power-on mode, press **MENU/**  to enter the main menu.





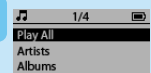
2

Press   once or more to select the Music icon.



3

Press   to confirm.



4

Press   to select your option.

5

Press  or   to start playback.

6

To pause playback, press  . To resume playback, press the button again.

7

To adjust the volume, press  .