

Register your product and get support at

www.philips.com/welcome

D400

D405



Short user manual

PHILIPS

Important safety instructions



Warning

- The Electrical network is classified as hazardous. The only way to power down the charger is to unplug the power supply from the electrical outlet. Ensure that the electrical outlet is always easily accessible.
- Refer to safety information before using the product.
- This product complies with European R&TTE directive 1999/5/EC.
- Use only the power supply listed in the user instructions.
- Use only the batteries listed in the user instructions.
- Do not allow the product to come into contact with liquids.
- Risk of explosion if battery is replaced by an incorrect type.
- Dispose of used batteries according to the instructions.
- When the handset rings or when the handsfree is activated, keep the handset away from your ear to avoid hearing damage.

1 Overview

In call

MENU OK Enter the option menu.

▲▼ Adjust the volume.

☎ End calls.

🔊 Turn the speaker on/off.

🔇 Mute/unmute the microphone.

#a/A Enter a pause.

In menu

MENU OK Confirm / Enter the option menu. / Select

REDIAL C Cancel

▲▼ Up / down

☎ Exit menu.

Standby

MENU OK Access the main menu.

📖 Phonebook

📞 Call log

☎ R Make and receive calls.

***INT** Make intercom call.

🔒 Lock/unlock the keypad.

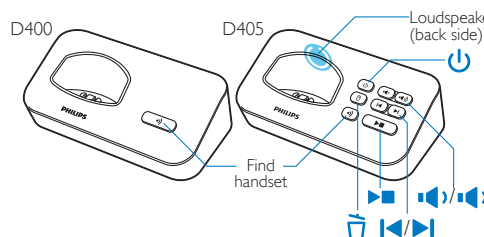
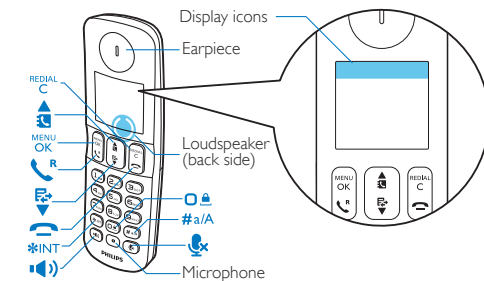
🔊 Make and receive calls through the speaker.

In text input

REDIAL C Delete text

␣ Enter a space.

#a/A Switch upper/lower case.



Display icons

📶 It displays the connection between the handset and the base. The more bars are shown, the better the signal strength is.

☎+ It remains steadily on when browsing incoming calls in the call log.

☎+ It indicates an outgoing call in the redial list.

☎x It flashes when there is a new missed call or when browsing new missed calls. It remains steadily on when browsing the missed calls in call log that are already read.

☎ It flashes when receiving incoming call. It remains steadily on during a call.

🔊 The speaker is on.

🔇 The ringer is off. The silent mode is set and within active period (the phone does not ring).

🔇 The silent mode is set, but is outside of active period.

🕒 The alarm is activated.

📧 D405 only: Answering machine: it flashes when there is a new message. It remains steadily on when the telephone answering machine is turned on.

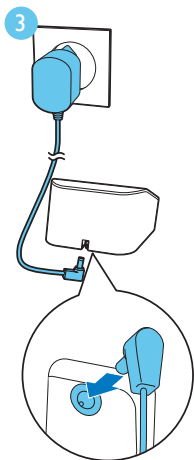
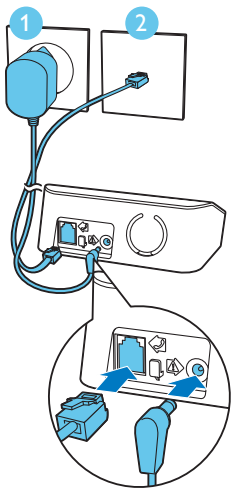
📧 Voice messages indicator: flashes for new messages, is steady for reviewed messages.
* This is network dependent

▲▼ It displays when you scroll up/down a list or increase and decrease the volume.

ECO The ECO mode is activated.

ECO+ The ECO+ mode is activated.

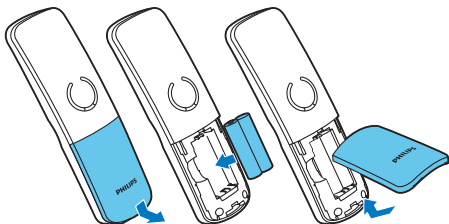
2 Connect





Multi-handset version only.

3 Get started

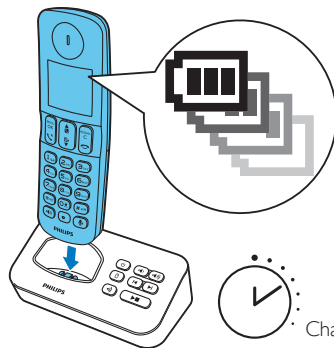
Insert batteries



Configure your phone

- 1 When using your phone for the first time, you see a welcome message (country dependent).
- 2 Set the country and language if prompted.
- 3 Set the date and time.
 - If the time is in 12-hour format, press  /  to select **[am]** or **[pm]** (country dependent).


Charge your phone



 > 70%

 40% - 70%

 10% - 40%

 < 10%

Flashing: low battery

Scrolling: charging in progress

4 Enjoy

Phonebook

Add record

- 1 Press .
- 2 Select **[Phonebook]** > **[Add new]**.
- 3 Follow on-screen instructions.

Call from the phonebook

- 1 Press .
- 2 Select a record and press .

Direct access memory

You have 2 direct access memories (Keys 1 and 2). To dial the saved phone number automatically, press and hold on the keys in standby mode. Depending on your country, keys 1 and 2 are preset to **[1_voicemail]** (voice mail number) and **[2_info svc]** (information service number) of your network operator respectively (network dependent).

Call log

Call from the call log

- 1 Press .
- 2 Select a record and press .

Save record

- 1 Press > > **[Save number]**.
- 2 Follow on-screen instructions.

Delete record

- 1 Press > > **[Delete]**.
- 2 Follow on-screen instructions.

Redial list

Call from the redial list

- 1 Press .
- 2 Select a record and press .

Save record

- 1 Press > > > **[Save number]**.
- 2 Follow on-screen instructions.

Delete record

- 1 Press > > > **[Delete]**.
- 2 Follow on-screen instructions.

Record an announcement (for D405 only)

- 1 Press .
- 2 Select **[Answ. Machine]** > **[Announcement]**.
- 3 Follow on-screen instructions.

Register additional handsets

You can register additional handsets to the base station.

- 1 Press .
- 2 Select **[Services]** > **[Register]**, then press to confirm.
- 3 Press and hold on the base station for 5 seconds.
- 4 Enter the system PIN/passcode (0000).
- 5 Press to confirm the PIN/passcode.
 - ↳ Registration is complete in less than 2 minutes.

Restore default settings

You can reset your phone settings to the original factory settings.

- 1 Press .
- 2 Select **[Services]** > **[Reset]**, then press to confirm.
- 3 Follow on-screen instructions.



Note

- You may recall the original PIN/passcode by following this procedure.



Technical data

Battery

- Philips: 2 x AAA NiMH 1.2 V Rechargeable 550 mAh batteries

Use only the supplied batteries.

Adapter

Base and charger:

Philips:	S003IB0600040	SSW-1920UK-2
Input:	100-240 V 50/60 Hz 150 mA	100-240 V 50/60 Hz 200 mA
Output:	6 V 400 mA	6 V 500 mA

Phonebook with 100 entries

Call log with 50 entries

Talk time: 16 hours

Standby time: 250 hours



Note

- You can install a DSL (digital subscriber line) filter to prevent noise and caller ID problems caused by the DSL interference.
- You can find the Declaration of Conformity on www.p4c.philips.com.

? Frequently asked questions


No signal bar is displayed on the screen.

- The handset is out of range. Move it closer to the base station.
- If the handset displays **[Register your handsets]**, put the handset on the base until the signal bar appears.

If I fail to pair (register) the additional handsets to the base station, what do I do?

Your base memory is full. Access **MENU** **OK** > **[Services]** > **[Unregister-Set]** to unregister the unused handsets and try again.

I have chosen a wrong language which I cannot read, what do I do?

- 1 Press  to go back to the standby screen.
- 2 Press **MENU** **OK** to access the main menu screen.
- 3 The following options will appear on the screen:

[Phone setup] > [Language]
[Réglages] > [Langue]
[Telefon-Setup] > [Sprache]
[Config. telef.] > [Lingua]

- 4 Select them to access the language options.
- 5 Select your own language.

My handset is in searching status, what do I do?

- Make sure that the base station has power supply.
- Register the handset to the base station.
- Move the handset closer to the base station.

I cannot change the settings of my voice mail, what do I do?

The voice mail service is managed by your service provider but not the phone itself. Contact your service provider to change the settings.

No display

- Make sure the batteries are charged.
- Make sure there are power and phone connections.

The handset on the charger does not charge.

- Make sure the batteries are inserted correctly.
- Make sure the handset is placed properly on the charger. The battery icon animates when charging.
- Make sure the docking tone setting is turned on. When the handset is placed correctly on the charger, you can hear a docking tone.
- The charging contacts are dirty. Disconnect the power supply first and clean the contacts with a damp cloth.
- Batteries are defective. Purchase new ones with the same specifications.

Bad audio (crackles, echo, etc.)

- The handset is nearly out of range. Move it closer to the base station.
- The phone receives interference from the nearby electrical appliances. Move the base station away from them.
- The phone is at a location with thick walls. Move the base away from them.

The handset does not ring.

Make sure the handset ringtone is turned on.

The caller ID does not display.

- The service is not activated. Check with your service provider.
- The caller's information is withheld or unavailable.

i



www.philips.com/support

For information, refer to the extended user documentation online.



When this crossed-out wheeled bin symbol is attached to a product it means that the product is covered by the European Directive 2002/96/EC.

2013 © WOOX Innovations Limited.
All rights reserved.

Philips and the Philips' Shield Emblem are registered trademarks of Koninklijke Philips N.V. and are used by WOOX Innovations Limited under license from Koninklijke Philips N.V.

CE 0168



UMS_D400-405

05_EN_V2.0

WK13375