

D160
D165



Short user manual

PHILIPS

! Important safety instructions

Warning

- The Electrical network is classified as hazardous. The only way to power down the charger is to unplug the power supply from the electrical outlet. Ensure that the electrical outlet is always easily accessible.
- Refer to safety information before using the product.
- This product complies with European RED directive 2014/53/EU.
- Use only the power supply listed in the user instructions.
- Use only the batteries listed in the user instructions.
- Do not allow the product to come into contact with liquids.
- Risk of explosion if battery is replaced by an incorrect type.
- Dispose of used batteries according to the instructions.
- When the handset rings or when the handsfree is activated, keep the handset away from your ear to avoid hearing damage.

1 Overview

In call

- MENU OK** Enter the option menu.
- REDIAL C** Access the redial list.
- ▲ ▼** Adjust the volume.
- END** End calls.
- #** Enter a pause (press and hold).
- R** Recall (network dependent).
- MUTE** Mute/unmute the microphone.

In menu

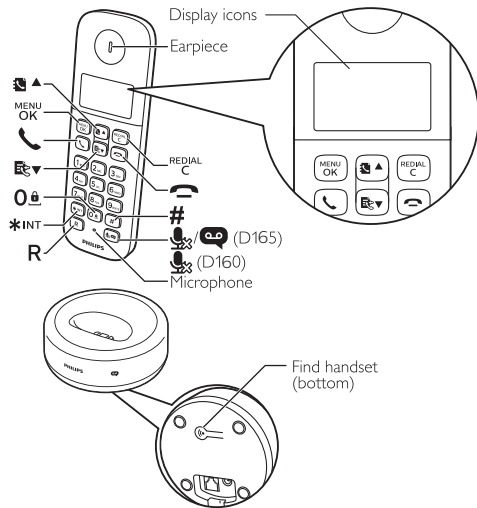
- MENU OK** Confirm / Select / Enter the option menu.
- REDIAL C** Cancel / back
- ▲ ▼** Up / down
- END** Exit menu.

Display icons

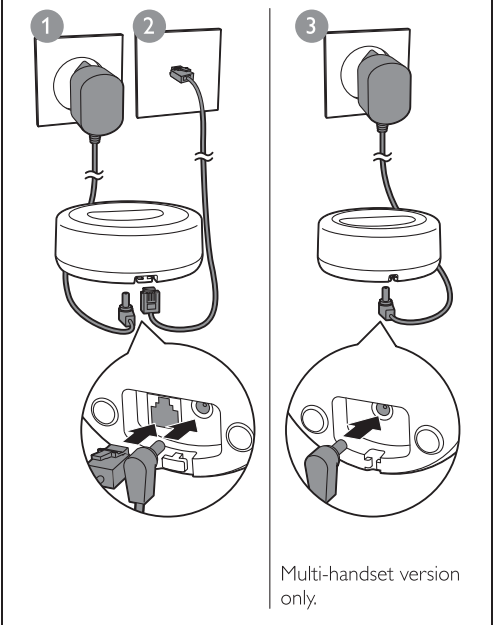
- Signal strength** It shows the connection status between the handset and base station. The more bars are shown, the better the signal strength is.
- Call log** It remains steadily on when browsing incoming calls in the call log.
- Outgoing call** It indicates an outgoing call in the redial list.
- Missed call** It flashes when there is a new missed call or when browsing new missed calls. It remains steadily on when browsing the missed calls in call log that are already read.
- Incoming call** It flashes when receiving incoming call. It remains steadily on during a call.
- Ringer** The ringer is off.
- D165 only: Answering machine** it flashes when there is a new message or when the memory is full. It is displayed when the telephone answering machine is turned on.
- Voice messages indicator**: flashes for new messages, is steady for reviewed messages. *This is network dependent.
- Volume** It is displayed when you scroll up/down a list or increase and decrease the volume.
- More digits** There are more digits on the right. Press **REDIAL C** to read.

Standby

- MENU OK** Access the main menu.
- REDIAL C** Access the redial list.
- PHONEBOOK** Phonebook
- CALL LOG** Call log
- CALL** Make and receive calls.
- ON/OFF** Switch the handset on or off (press and hold).
- *INT** Make intercom call (press and hold).
- LOCK** Lock/unlock the keypad (press and hold).
- D165 only: Message** Press to play new message from the answer machine. / Access to the answer machine menu.
- In text input**
- REDIAL C** Delete text.
- SPACE** Enter a space.

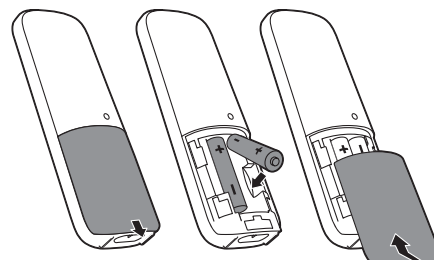


2 Connect



3 Get started

Insert batteries



Configure your phone

- 1 When using your phone for the first time, you see a welcome message (country dependent).
- 2 Set the country and language if prompted.
- 3 Set the date and time.
 - If the time is in 12-hour format, press **▲ ▼** / **END** to select **[AM]** or **[PM]** (country dependent).

Charge your phone



- Full battery** > 70%
- Partial battery** 40% - 70%
- Low battery** 10% - 40%
- Flashing**: low battery
- Scrolling**: charging in progress

4 Enjoy

Phonebook

Add record

- 1 Press **MENU** **OK**.
- 2 Select **[PHONEBOOK]** > **[ADD NEW]**.
- 3 Follow on-screen instructions.

Call from the phonebook

- 1 Press **CALL**.
- 2 Select a record and press **CALL**.

Direct access memory

You have up to 2 direct access memories (keys 1 and 2). To dial the saved phone number automatically, press and hold on the keys in standby mode. Depending on your country, keys 1 and 2 are preset to the voice mail number and information service number of your service provider respectively (network dependent).

Call log

Call from the call log

- 1 Press **CALL**.
- 2 Select a record and press **CALL**.

View record

Press **CALL** > **MENU** **OK** > **[VIEW]**.

Save record

- 1 Press **CALL** > **MENU** **OK** > **[SAVE NUMBER]**.
- 2 Follow on-screen instructions.

Delete record

- 1 Press **CALL** > **MENU** **OK** > **[DELETE]**.
- 2 Follow on-screen instructions.

Redial list

Call from the redial list

- 1 Press **REDIAL**.
- 2 Select a record and press **CALL**.

Save record

- 1 Press **REDIAL** > **MENU** **OK** > **[SAVE NUMBER]**.
- 2 Follow on-screen instructions.

Delete record

- 1 Press **REDIAL** > **MENU** **OK** > **[DELETE]**.
- 2 Follow on-screen instructions.

Telephone answering machine (for D165 only)

Record an announcement

- 1 Press **MENU** **OK** > **[ANSW MACHINE]** > **[ANNOUNCEMENT]**.
- 2 Follow on-screen instructions.

Listen to the incoming messages

Press **MENU** **OK** > **[ANSW MACHINE]** > **[PLAY]**.

Delete an incoming message

- 1 When you listen to the message, press **MENU** **OK** to enter the options menu.
- 2 Select **[DELETE]**, then press **MENU** **OK** to confirm.

Register additional handsets

You can register additional handsets to the base station.

- 1 Press and hold **CALL** on the base station for 10 seconds.
- 2 Press **MENU** **OK**.
- 3 Select **[SERVICES]** > **[REGISTER]**, then press **MENU** **OK** to confirm.
- 4 Enter the system PIN/passcode (0000).
- 5 Press **MENU** **OK** to confirm the PIN/passcode.
 - ↳ Registration is complete in less than 2 minutes.

Restore default settings

You can reset your phone settings to the original factory settings.

- 1 Press **MENU** **OK**.
- 2 Select **[SERVICES]** > **[RESET]**, then press **MENU** **OK** to confirm.
- 3 Follow on-screen instructions.

Note

- You may recall the original PIN/passcode by following this procedure.

? Frequently asked questions

No signal bar is displayed on the screen.

- The handset is out of range. Move it closer to the base station.
- If the handset displays **[UNREGISTERED]**, register your handset. (See the section on "Register additional handsets").

If I fail to pair (register) the additional handsets to the base station, what do I do?

- Your base memory is full. Access **MENU** **OK** > **[SERVICES]** > **[UNREGISTER]** to unregister the unused handsets and try again.
- If registration fails, unplug the power adapter from the base station and plug it back. Wait for 15 seconds, and then repeat the registration procedure.

I have chosen a wrong language which I cannot read, what do I do?

- 1 Press **CALL** to go back to the standby screen.
- 2 Press **MENU** **OK** to access the main menu screen.
- 3 The following options will appear on the screen:

[PHONE SETUP] > [LANGUAGE]
[CONFIG.TEL.] > [LANGUE]
[TEL.-SETUP] > [SPRACHE]
[CONF.TELEF.] > [LINGUA]

Technical data

Battery

- Philips: 2 x AAA NiMH 1.2 V Rechargeable 300 mAh batteries

Use only the supplied batteries.

Adapter (base and charger)

	Input:	Output:
HuaJin:	100-240 V~	6 Vdc
HJ-0600400A1-UK	50/60 Hz 150 mA	400 mA
Tenpao:	100-240 V~	6 Vdc
S003IB0600040	50/60 Hz 150 mA	400 mA

Phonebook with 50 entries

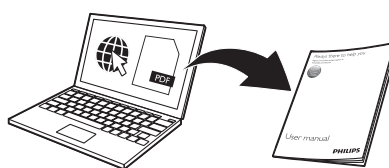
Call log with 20 entries

Talk time: 10 hours

Standby time: 200 hours

Note

- You can install a DSL (digital subscriber line) filter to prevent noise and caller ID problems caused by the DSL interference.
- You can find the Declaration of Conformity on www.p4c.philips.com.



www.philips.com/support

To access the user instructions online, use the reference model number written on the product label at the bottom of the base station.

This symbol on a product means that the product is covered by European Directive 2012/19/EU.
2019 © MMD Hong Kong Holding Limited
All rights reserved.

This product has been manufactured by, and is sold under the responsibility of MMD Hong Kong Holding Limited and MMD Hong Kong Holding Limited is the warrantor in relation to this product. Philips and the Philips Shield Emblem are registered trademarks of Koninklijke Philips N.V. and are used under license from Koninklijke Philips N.V.



UMS_D160/165
05_EN_V1.0