

Register your product and get support at

www.philips.com/welcome



CSP620

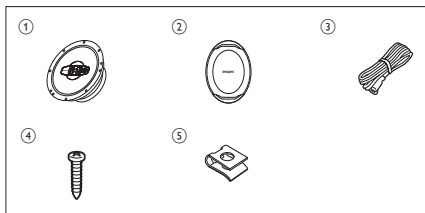


CSP6920

EN User manual

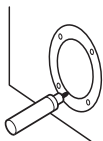
PHILIPS

A

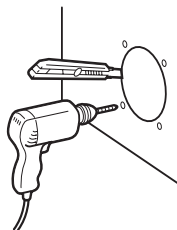


B

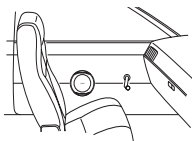
1



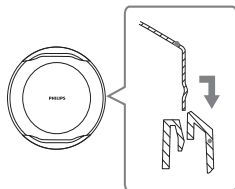
2



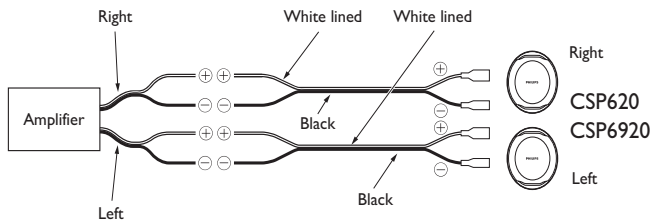
3



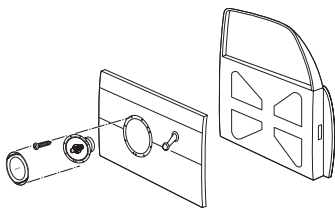
4



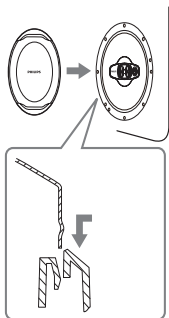
5



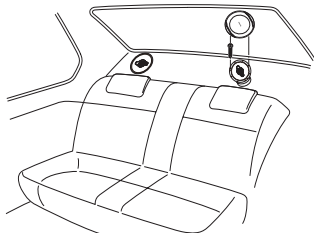
6



7



C



1. Important

Safety

- Read and understand all instructions before you use the apparatus. If damage is caused by failure to follow instructions, the warranty does not apply.
- Use only the supplied mounting hardware for a safe and secure installation.
- Do not continuously use the speaker system beyond the peak power handling capacity.
- Keep credit cards, watches, recorded tapes etc. with magnetic coding away from the speaker system to prevent damage caused by the magnets in the speakers.
- Clean the apparatus with soft, damp cloth. Never use substances such as alcohol, chemicals or household cleaners on the apparatus.

Notice

Environmental information

All unnecessary packaging has been omitted. We have tried to make the packaging easy to separate into three materials: cardboard (box), polystyrene foam (buffer) and polyethylene (bags, protective foam sheet.) Your system consists of materials which can be recycled and reused if disassembled by a specialized company. Please observe the local regulations regarding the disposal of packaging materials, exhausted batteries and old equipment.

Any changes or modifications made to this device that are not expressly approved by Philips Consumer Lifestyle may void the user's authority to operate the equipment.

2. Your car stereo speakers

Congratulations on your purchase, and welcome to Philips! To fully benefit from the support that Philips offers, register your product at www.philips.com/welcome.

Introduction

With the speakers, you can enjoy high power music with vivid sound.

What's in the box A

Check and identify the contents of your package:

- ① Speakers (x2)
- ② Grille net + Frame (x2)
- ③ Speaker wire (x2)
- ④ Screw (x8)
- ⑤ Shrapnel (x8)

3. Installation

A depth of at least 46mm is required to mount the speaker. Measure the depth of the area where you are to mount the speaker, and ensure that the speaker does not obstruct any other components of the car.

Option 1: Mount on door (front or rear) B

You can mount the speakers on the front/rear door of your car. ①

Note

- Make sure that nothing obstructs around the mounting location of the door.
- A hole for mounting may already be cut out of the inner panel of the door (front or rear). In this case, you need to modify the board only.
- Ensure that the speaker terminals, frame or magnet do not interfere with any inner parts, such as the window mechanism in the door (when you open or close the window), etc. Also ensure that the speaker grille does not touch any inner fittings, such as the window cranks, door handles, arm rests etc.

- 1 Turn off the car ignition key.
 - If the power is on, the click noise generated by the connection may damage the speakers.
- 2 Cut out the mounting template from the packing box.
- 3 Paste the template on the location selected for mounting the speaker.
- 4 Mark the cut-off hole and the 4 bolt holes. ②
- 5 Cut out the marked area and drill the bolt holes. ③
- 6 Remove the grille net. ④
- 7 Strip the speaker wires and connect them to the amplifier. ⑤
 - Black wire: connect to "-" (negative) terminal
 - Black (white lined): connect to "+" (positive) terminal

Note

- Match the "left", "right", "+" and "-" terminals correctly. Revised polarity may degrade sound quality.
- Two 4-ohm speakers, wired in stereo, present a 8 ohm load to each channel of the amplifier. Most two channel amplifiers work well in this configuration. However, if two 4-ohm speakers, wired in parallel to a bridged two -channel amplifier, present a 2-ohm mono load to the amplifier. Most 2-channel amplifiers do not support 2-ohm mono operation! Amplifier damage may result!

8 Mount on the speaker as shown below. ⑥

9 Press and insert the edges of the grille net. ⑦



Tip

- The speaker grille can be mounted without the grille net, if you like.

Option 2: Mount on rear tray Ⓒ

You can also mount the speakers into the surface of the rear tray.

Follow the steps in section “Option 1: Mount in door” to mount the speakers into the rear tray:

4. Product information



Note

- Product information is subject to change without prior notice.

Model	CSP620	CSP6920
Speaker type	16.5cm, 3-way triaxial speaker	16x24cm, 5-way coaxial speaker
RMS power (Watts)	80W	80W
Peak music power (Watts)	400W	480W
Sensitivity (dB/W/m)	90dB	91dB
Frequency response (Hz)	35-32kHz	27-33kHz
Impedance (ohms)	4 ohms	4 ohms
Magnet mass (Oz)	8.6Oz	22Oz
Mounting depth (mm)	59mm	88.1 mm

5. Troubleshooting

To keep the warranty valid, never try to repair the system yourself.

If you encounter problems when using this apparatus, go to the Philips web site (www.philips.com/welcome). When you contact Philips, ensure that the apparatus is nearby and the model number and serial number are available.



© 2009 Koninklijke Philips Electronics N.V.

All rights reserved.

CSP620_55_UM_V3.1



100% recycled paper
100% papier recyclé