

PHILIPS

User manual

CSM102

Car audio system



Register your product and get support at www.philips.com/support



2017 © Gibson Innovations Limited. All rights reserved. This product has been manufactured by, and is sold under the responsibility of Gibson Innovations Ltd., and Gibson Innovations Ltd. is the warrantor in relation to this product. Philips and the Philips Shield Emblem are registered trademarks of Koninklijke Philips N.V. and are used under license.

CSM102_12_UM_V4.0



Important

Read these instructions for use carefully before using the antenna and save them for future reference.



Warning

- Risk of injury: Never install the antenna and its accessories on the airbag cover.
- Risk of swallowing parts: Keep the antenna and accessories out of the reach of children.



Caution

- Risk of electromagnetic interference: Do not install the GPS antenna over any sensors or vents.
- Risk of short circuit, malfunction, or damage to your car navigation system: Do not alter the GPS antenna cable or dismantle the antenna box.
- Risk of poor reception: Use the supplied metal sheet only, and never cut or distort it; do not paint the GPS antenna.
- Risk of damage to the GPS antenna cable: Never pull the antenna cable when you remove the antenna.
- Risk of scratching your car: The GPS antenna box has a magnet. When you install or remove it, do not drag it on any metal surface.

Notice

Any changes or modifications made to this device that are not expressly approved by Gibson Innovations may void the user's authority to operate the equipment.

Care of the environment



Your product is designed and manufactured with high quality materials and components, which can be recycled and reused.



This symbol on a product means that the product is covered by European Directive 2012/19/EU. Inform yourself about the

local separate collection system for electrical and electronic products. Follow local rules and never dispose of the product with normal household waste. Correct disposal of old products helps

prevent negative consequences for the environment and human health.

Environmental information

All unnecessary packaging has been omitted. We have tried to make the packaging easy to separate into three materials: cardboard (box), polystyrene foam (buffer) and polyethylene (bags, protective foam sheet.) Your system consists of materials which can be recycled and reused if disassembled by a specialized company. Please observe the local regulations regarding the disposal of packaging materials, exhausted batteries and old equipment.

Copyright

2017 © Gibson Innovations Limited. All rights reserved. Philips and the Philips' Shield Emblem are registered trademarks of Koninklijke Philips N.V. and are used by Gibson Innovations Limited under license from Koninklijke Philips N.V. Specifications are subject to change without notice. Gibson reserves the right to change products at any time without being obliged to adjust earlier supplies accordingly.

Product information



Note

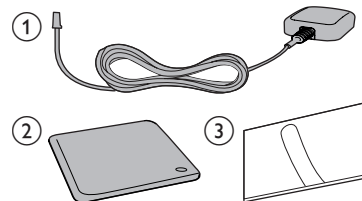
- Product information is subject to change without prior notice.

Antenna	Build-in ceramic patch antenna
Supplying voltage	5 ± 0.2 V
Operating temperature	-20 ~ +70°C
Cold start	28 s (typical), < 50 s
Hot start	1 s (typical), < 3 s
Acquisition sensitivity	-141 dBm (typical)
Navigation sensitivity	-158 dBm (typical)
Tracking sensitivity	-158 dBm (typical)
Antenna cable length	3.0 m
Dimensions of antenna box (W x H x D)	50 x 40 x 16 mm



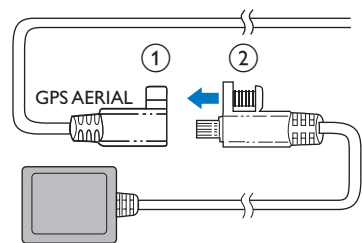
What's in the box

Check and identify the contents of your package:

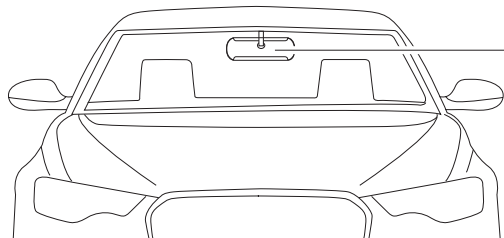
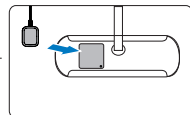
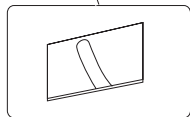
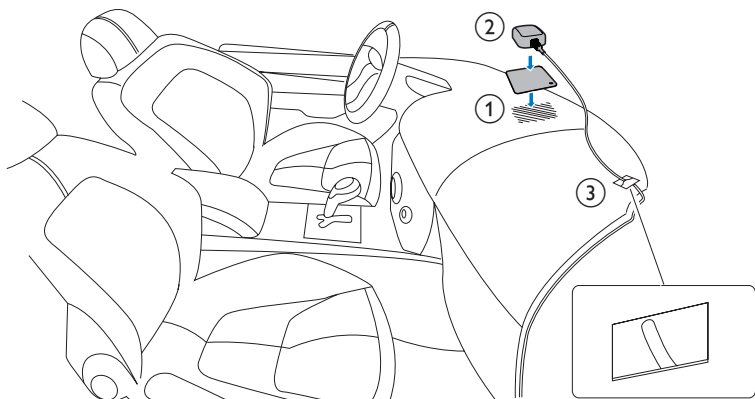


- 1 GPS antenna
- 2 Metal sheet
- 3 Clamp x 5

1 Connect the GPS antenna



- 1 Connect the GPS antenna to your car navigation system.
- 2 Use the supplied screw to fasten the connectors.



You can install the signal receptor of GPS antenna:

- On the dashboard cover
- On the back panel of rear-view mirror

- ① Remove the protective cover of the metal sheet, and then affix it.
- ② Affix the antenna box onto the metal sheet.
- ③ Use clamps to secure the antenna cable.



Note

- Make sure that the contact surface that contacts with the metal sheet is free of moisture, dust, grime, oil, and any other dirt.
- If you remove the metal sheet, some adhesive may be left on the contact surface.

Warranty against Defects

In this warranty:

We or us means Gibson Innovations ABN 531 651 059 75, and our contact details are set out at the end of this warranty;

You means the purchaser or the original end-user of the Goods;

Supplier means the authorised distributor or retailer of the Goods that sold you the Goods in Australia, New Zealand or South Africa; and

Goods means the product or equipment which was accompanied by this warranty and purchased in Australia, New Zealand or South Africa.

If you require assistance with the operation of the product, its features or specifications please contact

Australia	New Zealand	South Africa
DLG International Telephone: 1800 304 811	DLG International Telephone: 0800 437 663	Connoisseur Electronics (Pty) Ltd Telephone: 0860100551 Email: info@connoisseur.co.za

Australia: Our Goods come with guarantees that cannot be excluded under the Australian Consumer Law. You are entitled to a replacement or refund for a major failure and for compensation for any other reasonably foreseeable loss or damage. You are also entitled to have the Goods repaired or replaced if the goods fail to be of acceptable quality and the failure does not amount to a major failure. This is not a complete statement of your legal rights as a consumer.

New Zealand: Our Goods come with guarantees that cannot be excluded under the Consumer Guarantees Act 1993. This guarantee applies in addition to the conditions and guarantees implied by that legislation.

Additional Warranty:

In addition to the rights and remedies that you have under the Australian Consumer Law, Consumer Guarantees Act of New Zealand, South African Law, or any other applicable law, we provide the following warranty against defects:

1. If, during the first **12 months** from their date of purchase from the Supplier (**Warranty Period**), the Goods prove defective by reason of improper workmanship or materials and none of your statutory rights or remedies apply, we will repair or replace the Goods without charge.
2. We do not have to repair or replace the Goods under this Additional Warranty if the Goods have been used for a commercial purpose; misused, improperly or inappropriately installed, operated or repaired; abused; damaged; or not maintained in accordance with the manufacturer's instructions.
3. Even when we do not have to repair or replace the Goods, we may decide to do so anyway. In some cases, we may decide to substitute the Goods with a similar alternative product of our choosing. All such decisions are at our absolute discretion.

4. All such repaired, replaced or substituted Goods continue to receive the benefit of this Additional Warranty for the time remaining on the original Warranty Period.
5. This Additional Warranty is limited to repair, replacement or substitution only. As far as the law permits, we will not be liable for any loss or damage caused to property or persons arising from any cause whatsoever.
6. In order to claim under this Additional Warranty you must contact us within the Warranty Period:

Australia	New Zealand	South Africa
DLG International Telephone: 1800 304 811	DLG International Telephone: 0800 437 663	Connoisseur Electronics (Pty) Ltd Telephone: 0860100551 Email: info@connoisseur.co.za

You will be asked for details of the Goods, a description of the defect and your personal details. Upon accepting your claim, we shall assist you with either returning the Goods to the Supplier for replacement or to the most convenient Philips Authorized Service Centre for your Goods to be repaired. In some case we may require that you return to the Goods to us (at the address below) for repair, replacement or substitution.

- * All returned Goods must be accompanied by satisfactory proof of purchase which clearly indicates the name and address of the Supplier, the date and place of purchase and identifies the product. It is best to provide a legible and unmodified receipt or sales invoice.
 - * You must bear any expense for return of the Goods or otherwise associated with making your claim under this Additional Warranty.
7. This warranty is only valid and enforceable in Australia, New Zealand and South Africa.

Contact us or the place of purchase for further details.

Australia	New Zealand	South Africa
DLG International 88 Enterprise Ave Berwick 3086 Melbourne	DLG International Unit K 11 Echelon Place East Tamaki 2013	Connoisseur Electronics (Pty) Ltd The Mediterranean Conference Centre 72 Concorde Road East Bedfordview Gauteng 2007 Telephone: 011-4501122

Service:
1800 304 811
E-mail:
service@dlgint.com.au

Service:
0800 437 663
Email:
service@dlgint.co.nz

Service:
0860100551
E-mail:
info@connoisseur.co.za