



## How to upgrade the CAW7740N Wireless Base Station firmware

---



**The last CAW7740N/00 and CAW7740N/05 firmware which can be downloaded from Philips website is: V 0.00.14**

**This How-to manual will answer the following questions:**

- 1. Why should I upgrade my CAW7740N firmware?**
- 2. How do I know which firmware version I have in my CAW7740N?**
- 3. How do I know what the latest firmware is?**
- 4. How do I upgrade to the latest firmware?**
- 5. Your CAW7740N Wireless Base Station firmware is now upgraded.**



## How to upgrade the CAW7740N Wireless Base Station firmware

### 1. Why should I upgrade my CAW7740N firmware?

- To add new functionality or to fix some issues.

#### Issues Problems fixed:

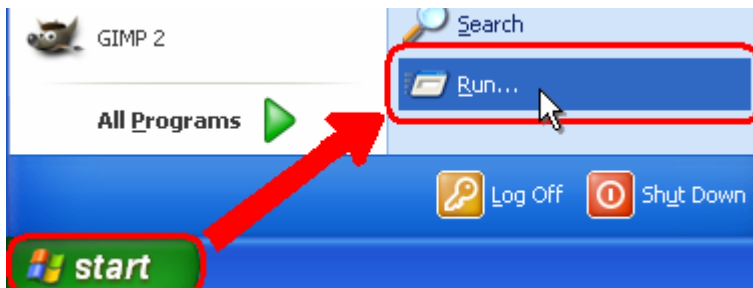
1. MTU Value can not be set via UCP protocol ( CD install ).

### 2. How do I know which firmware version I have in my CAW7740N?

- Make sure your PC is connected to your Wireless Base Station (either by Wi-Fi or by Ethernet)

#### 2.1 Determine the IP address of your CAW7740N Wireless Base Station.

- Click on your PC **Start** => **Run**



- Type **cmd** and click **OK**.
- type **ipconfig** followed by Enter.

```
C:\WINDOWS\system32\cmd.exe
Microsoft Windows XP [version 5.1.2600]
(C) Copyright 1985-2001 Microsoft Corp.

C:\>ipconfig

Configuration IP de Windows

Carte Ethernet Local Area Connection:

    Suffixe DNS propre à la connexion :
    Adresse IP. . . . . : 192.168.1.17
    Masque de sous-réseau . . . . . : 255.255.255.0
    Adresse IP. . . . . : fe80::212:3fff:fe11:53f1%11
    Passerelle par défaut . . . . . : 192.168.1.2
```



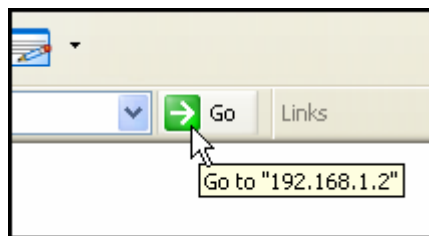
## How to upgrade the CAW7740N Wireless Base Station firmware

### 2.2 Browse to your CAW7740N Wireless Base Station.

- Open Internet Explorer and type the Default Gateway address in the Address bar.



- Click **GO**.



You should now see the setup page.

### 2.3 On the Home network Setting page, click on Status and you can find the firmware version.

**PHILIPS** ADVANCED SETUP

Help Home Logout

<b>SETUP WIZARD</b>	
<b>SYSTEM</b>	
<b>WAN</b>	
<b>LAN</b>	
<b>WIRELESS</b>	
<b>NAT</b>	
<b>FIREWALL</b>	
<b>UPnP</b>	
<b>DDNS</b>	
<b>TOOLS</b>	
<b>STATUS</b>	

INFORMATION	
Numbers of DHCP Clients:	1
Runtime Code Version:	0.00.12 (Nov 14 2007 09:56:34)
Boot Code Version:	V0.09
LAN MAC Address:	00-1D-19-8E-7E-BD
Wireless MAC Address:	00-1D-19-8E-7E-BE
WAN MAC Address:	00-1D-19-8E-7E-BF
Hardware Version:	01B
Serial Num:	EW010807000658



## How to upgrade the CAW7740N Wireless Base Station firmware

### 3. How do I know what the latest firmware is?

- Check the Philips support site for the CAW7740N Wireless Base Station regularly. To download new software version, please click on the following link:

[LINK](#)\*

- Unzip the files and store them in your PC and compare with your firmware version.

\* **Warning:** Should you encounter any difficulty to open this link, please check your current version of Adobe Acrobat Reader. For an optimal use, we recommend to run the document under version 7.0 minimum. If you cannot, or if you do not wish to upgrade your Adobe Acrobat Reader version, please type in the complete link in your Internet Explorer, to open the document.

### 4. How do I upgrade to the latest firmware?

- Make sure your PC is connected to your Wireless Base Station (either by Wi-Fi or by Ethernet)

From Status page,

- 1) Click on **TOOLS**
- 2) Then **Firmware Update**
- 3) Click on **Browse...**

**PHILIPS** ADVANCED SETUP

Help Home Logout

**SETUP WIZARD**

- SYSTEM
- WAN
- LAN
- WIRELESS
- NAT
- FIREWALL
- UPnP
- DDNS
- TOOLS 1**
- Configuration Tools
- Firmware Upgrade 2**
- Reset

**STATUS**

**Firmware Upgrade**

This tool allows you to upgrade the router firmware using a file provided by us. You can download the latest firmware from <http://www.philips.com>

Enter the path and name, or browse to the location, of the upgrade file then click the APPLY button. You will be prompted to confirm the upgrade to complete the process.

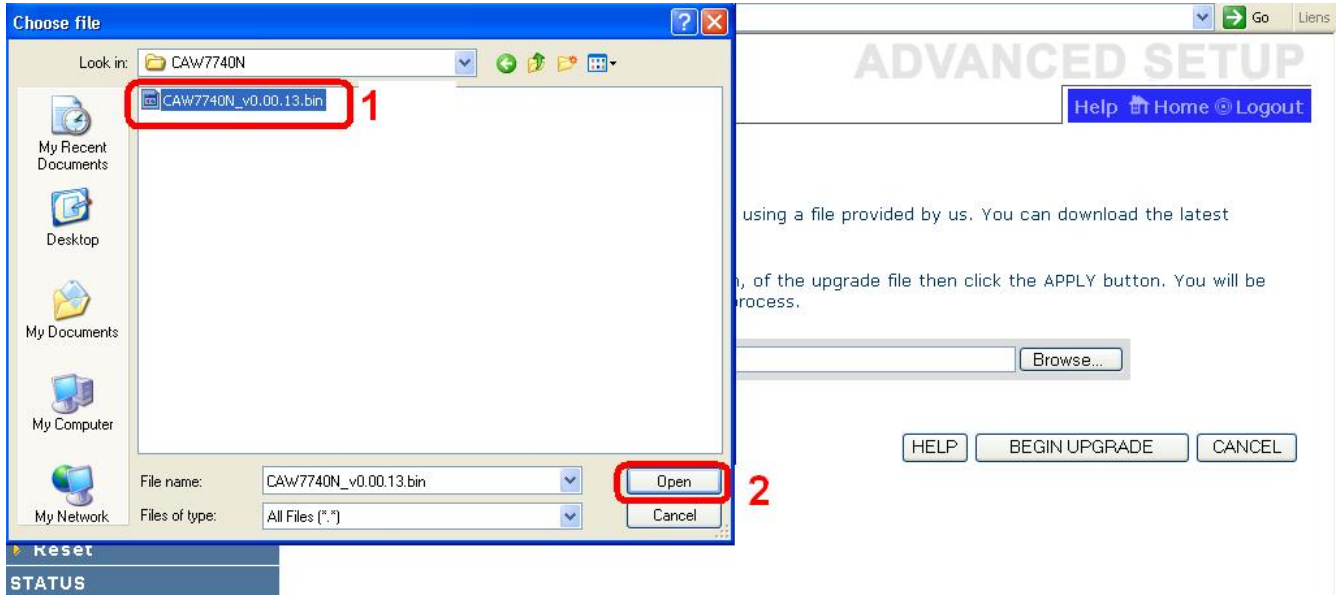
Firmware File  **Browse...** 3

HELP BEGIN UPGRADE CANCEL

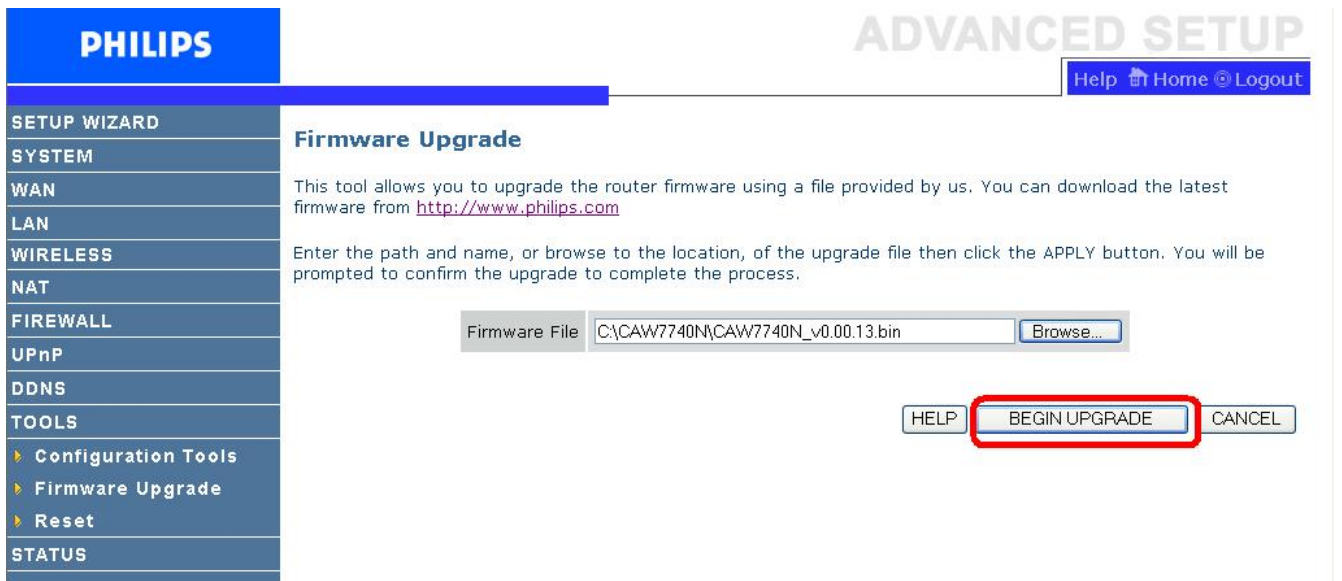


## How to upgrade the CAW7740N Wireless Base Station firmware

- Browse to the place where you've saved the new CAW7740N firmware in your PC.
  1. Select the new CAW7740N firmware.
  2. Click "Open"



Click on **BEGIN UPGRADE**





## How to upgrade the CAW7740N Wireless Base Station firmware

- Wait until the update is finished.

**PHILIPS**

ADVANCED SETUP

Help Home Logout

SETUP WIZARD

SYSTEM

WAN

LAN

WIRELESS

NAT

FIREWALL

UPnP

DDNS

TOOLS

▶ Configuration Tools

▶ Firmware Upgrade

▶ Reset

STATUS

Your data is being saved

### 5. Your CAW7740N Wireless Base Station firmware is now upgraded.

- You can check the update by control as in chapter 2.3.