

Register your product and get support at
Registre su producto y obtenga asistencia en
Registre seu produto e obtenha assistência em

CEM1000

www.philips.com/welcome

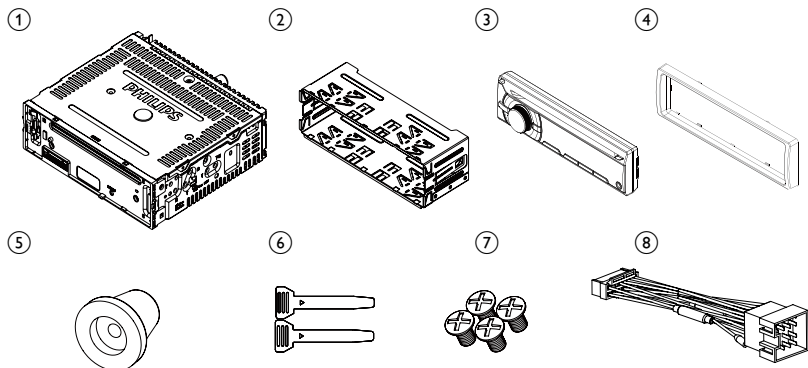


EN

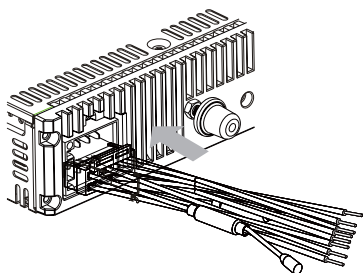
Quick Start Guide

PHILIPS

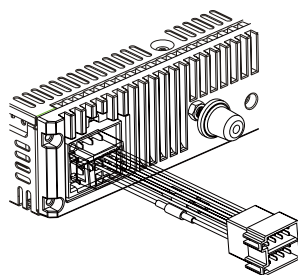
1



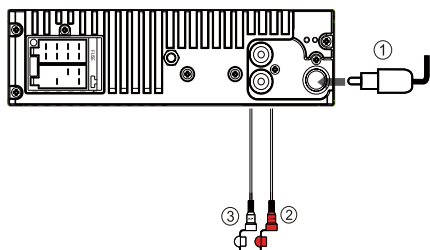
2



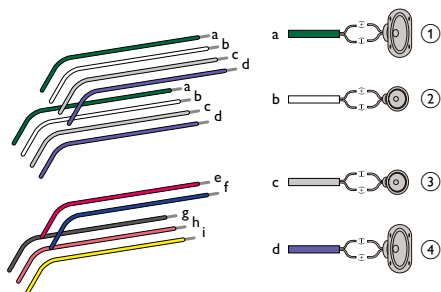
3

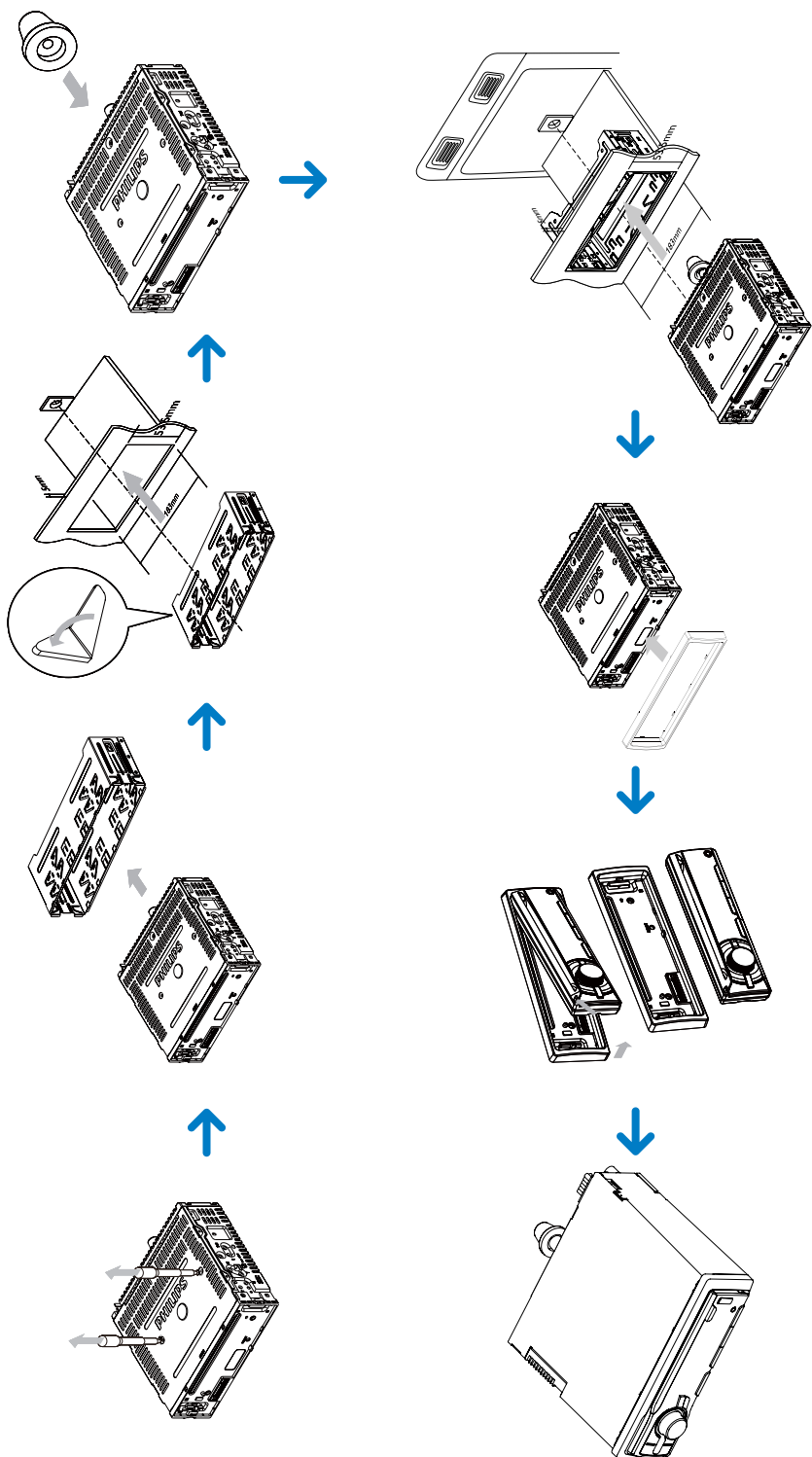


4



5





Overview of parts 1

These are the supplied parts needed to connect and install this unit.

- 1 **Main unit**
- 2 **Sleeve**
- 3 **Front panel**
- 4 **Trim plate**
- 5 **Rubber cushion**
- 6 **Disassembly tools**
- 7 **Screws (4 pieces)**
- 8 **Standard ISO connector**

Select country/region

- 1** Press \odot to turn on the unit.
- 2** Rotate \odot to select an option:
 - [USA] (United States)
 - [Latin] (Latin America)
 - [Europe] (Western Europe)
 - [ASIA] (Asia Pacific)
 - [Mid-East] (Middle East)
 - [Russia] (Russia)
- 3** Press \odot to confirm.

Connection

For cars with ISO connectors 2 3 4

- 1** Pull out the ISO connectors from car dashboard and connect them to the bigger end of the supplied standard connector.
- 2** Connect the other end of the supplied standard connector to the unit.
- 3** Connect the antenna and amplifier as illustrated, if applicable. You can connect the car audio to the amplifier through RCA-TO-RCA cables (not supplied).

Connector	Connect to
1 ANTENNA	Antenna
2 REAR LINE OUT R	Rear right speaker

3 REAR LINE OUT L	Rear left speaker
----------------------	-------------------

For cars without ISO connectors 4 5

- 1** Connect the antenna and amplifier as illustrated, if applicable.
- 2** Cut off the bigger end of the supplied standard connector.
- 3** Check the car's wiring carefully, then connect them to the supplied standard connector.

1	Green/black strip	Left speaker (Rear)
2	White/black strip	Left speaker (Front)
3	Gray/black strip	Right speaker (Front)
4	Purple/black strip	Right speaker (Rear)
e	RED	Ignition key +12V DC when ON/ACC
f	BLUE	Motor/electric antenna relay control lead/Amplifier relay control lead
g	BLACK	Ground
h	YELLOW	To the +12V car battery which is energized at all times

- 4** Connect the supplied standard connector to the unit.

Mount into the dashboard 6

- 1** If the car does not have an on-board drive or navigation computer, disconnect the negative terminal of the car battery.
- 2** Remove the two screws on the top of the unit.
- 3** Remove the mounting sleeve with the supplied disassembly tools.
- 4** Install the sleeve into the dashboard and bend the tabs outward to fix the sleeve.

- 5 Place the supplied rubber cushion over the end of the mounting bolt.
- 6 Slide the unit into the dashboard until you hear a click sound.
- 7 Reconnect the negative terminal of the car battery.

Attach the front panel 6

- 1 Attach the trim plate.
- 2 Insert the right side of the panel in the chassis until it is correctly engaged.
- 3 Press the left side of the panel until the mechanism locks it into place.

Turn on

- 1 Press **⏻** to turn on the unit.
 - To turn off the unit, press **⏻** for over 3 seconds.

Set clock

- 1 Press **MENU**.
- 2 Press **▲** or **▼** repeatedly until current time is displayed.
- 3 Rotate **⌚** clockwise to set hour.
- 4 Press **⌚** to confirm.
- 5 Rotate **⌚** anti-clockwise to set minute.
- 6 Press **⌚** to confirm.

View clock

- 1 Press and hold **OPTIONS** repeatedly until the clock is displayed.

Listen to radio

- 1 Press **SOURCE** repeatedly to select Tuner.
- 2 Press **▲** or **▼** to select band: **[FM1]**, **[FM2]**, **[FM3]**, **[AM1]**, or **[AM2]**.
- 3 Press **⏮** or **⏭** to tune to a radio station manually.
 - The radio station is broadcast.
 - To search for a radio station automatically, press **⏮** or **⏭** for over 3 seconds.

