

Always here to help you /
始终如一地为您提供帮助

Register your product and get support at /
请登录以下网址并得到相应的帮助
www.philips.com/welcome

CA6500



User manual / 用户手册

PHILIPS



www.philips.com



100% recycled paper
100% 循环再造纸



4222.200.0309.4

Introduction

Congratulations on your purchase and welcome to Philips!
To fully benefit from the support that Philips offers, register your product at www.philips.com/welcome.

Important

Read this important information carefully before you use the appliance and save it for future reference.

Danger

- Do not immerse the base and the milk jug in water or any other liquid. Do not clean them in the dishwasher either.

Warning

- Check if the voltage indicated on the appliance corresponds to the local mains voltage before you connect the appliance.
- Always disconnect the appliance from the mains if you leave it unattended and before you assemble, disassemble or clean it.
- Only connect the appliance to an earthed wall socket.
- Do not use the appliance if the plug, the mains cord or other parts are damaged.
- If the mains cord is damaged, you must have it replaced by Philips, a service centre authorised by Philips or similarly qualified persons in order to avoid a hazard.
- This appliance is not intended for use by persons (including children) with reduced physical, sensory or mental capabilities, or lack of experience and knowledge, unless they have been given supervision or instruction concerning use of the appliance by a person responsible for their safety.
- Keep the appliance and its cord out of the reach of children.
- Do not let the mains cord hang over the edge of the table or worktop on which the appliance stands.
- Only use the appliance in combination with its original base.
- Do not let water or a moist cloth come into contact with the connectors on the base and on the underside of the milk jug.

Caution

- Never use any accessories or parts from other manufacturers or that Philips does not specifically recommend. If you use such accessories or parts, your guarantee becomes invalid.
- Do not remove the coil holder from the spindle as this may cause damage.
- Only use the appliance to heat up or froth milk. Do not use it to process any other ingredients.
- Do not exceed the maximum level indicated in the milk frother. If you overfill the milk frother, hot milk may escape from under the lid and cause scalding.
- The bottom of the jug is hot if you pour out milk immediately after heating up or frothing.
- Do not move the appliance while it is operating, to prevent hot milk from escaping from under the lid.
- Correct cleaning of the milk frother is very important for reliable performance and good frothing results.
- Always return the appliance to a service centre authorised by Philips for examination or repair. Do not attempt to repair the appliance yourself, otherwise your guarantee becomes invalid.
- Always place the base and the milk jug on a dry, flat and stable surface.
- Do not place the appliance on a hot surface and prevent the mains cord from coming into contact with hot surfaces.
- Never let the appliance operate unattended.
- Make sure that the appliance has switched off before you remove the milk jug from the base.
- Do not use the appliance in combination with a transformer, as this could cause hazardous situations.
- Never use scouring pads, abrasive cleaning agents or aggressive liquids such as petrol or acetone to clean the appliance.
- This appliance is intended for normal household use only. It is not intended for use in environments such as staff kitchens of shops, offices, farms or other work environments. Nor is it intended to be used by clients in hotels, motels, bed and breakfasts and other residential environments.

Compliance with standards

- This Philips appliance complies with all standards regarding electromagnetic fields (EMF).

Ordering accessories

To buy accessories or spare parts, visit www.shop.philips.com/service or go to your Philips dealer. You can also contact the Philips Consumer Care Centre in your country (see the worldwide guarantee leaflet for contact details).

Environment

- Do not throw away the appliance with the normal household waste at the end of its life, but hand it in at an official collection point for recycling. By doing this, you help to preserve the environment. (Fig. 1)

Guarantee and support

If you need information or support, please visit www.philips.com/support or read the separate worldwide guarantee leaflet.

Troubleshooting

This chapter summarises the most common problems you could encounter with the appliance. If you are unable to solve the problem with the information below, visit www.philips.com/support for a list of frequently asked questions or contact the Consumer Care Centre in your country.

Problem	Possible cause	Solution
The light in the button flashes but the appliance does not operate.	You just prepared hot frothed milk or hot milk and pressed the button for milk or hot frothed milk again straightaway without letting the appliance cool down.	If you want to prepare hot frothed milk or hot milk again straightaway, the milk jug needs to cool down for a few minutes before you can use it again. As long as the milk jug is still hot, the temperature limiter makes sure that the appliance cannot be operated. You can rinse the inside of the milk jug with cold water to let it cool down faster.
	The temperature of the milk is too high.	Replace the warm milk with cold milk or let the appliance cool down.
The appliance does not froth.	You have not placed the lid properly on the appliance.	Place the lid properly.
	You did not attach the frothing coil to the coil holder.	Attach the frothing coil to the coil holder.
	You used a type of milk that is not suitable for frothing.	Fresh milk is not always consistent and many factors can influence the quality of the milk froth (like protein content). If the milk does not froth as you would like, try a different type or brand of milk. Use semi-skimmed cow's milk at refrigerator temperature for the best frothing result.
	The inside of the milk jug is polluted with milk residues, which prevents the coil holder from rotating.	Clean the coil holder and the inside of the milk jug.
The button does not light up after I press it.	The appliance is not plugged in.	Put the mains plug in an earthed wall socket.
Milk froth escapes from under the lid.	You put too much milk in the milk jug.	Do not fill the milk jug beyond the MAX indication.
The milk is not very hot.	This is normal.	The milk is heated up to approx 74°C to ensure the best froth and taste. Milk proteins start to break down and burn if the milk is over heated.
Not all milk has been frothed.	This is normal.	The appliance does not froth all the milk. The appliance created the optimal milk-froth ratio. The milk easily mixes with coffee or other beverages and the milk froth stays on top for a delicious head.



Rinse the milk jug, the lid and the frothing coil with hot water and dry all parts before you use the appliance for the first time. If you want to prepare hot frothed milk or hot milk again straightaway, the milk jug needs to cool down for a few minutes before you can use it again. You can also heat up milk without frothing it. In this case you do not need to use the frothing coil. For hot preparations press the button shortly, for cold milk froth keep the button pressed for 3 seconds.



Do not immerse the base and the milk jug in water or any other liquid. Do not clean them in the dishwasher either. Never use sharp objects, scouring pads, abrasive cleaning agents or aggressive liquids such as petrol or acetone to clean the appliance.

简体中文

简介

感谢您的惠顾，欢迎光临飞利浦！为了您能充分享受飞利浦提供的支持，请在 www.philips.com/welcome 上注册您的产品。

注意事项

使用产品之前，请仔细阅读本重要信息，并妥善保管以供日后参考。

危险

- 请勿将底座和牛奶壶浸入水中或任何其它液体中。请勿用洗碗机清洗。

警告

- 在将产品连接电源之前，请先检查产品所标电压与当地的供电电压是否相符。
- 产品无人看管时和拆装、清洁之前，务必断开产品电源。
- 产品只能使用带接地线的插座。
- 如果插头、电源线或其它部件受损，则不要使用产品。
- 如果电源软线损坏，为了避免危险，必须由制造商、其维修部或类似部门的专业人员更换。
- 产品不打算由有肢体、感官或精神能力缺陷或缺少使用经验和知识的人（包括儿童）使用，除非有负责他们安全的人对他们进行与产品使用有关的监督或指导。
- 应照看好儿童，确保他们不玩耍本器具。
- 将产品及其线缆放在儿童接触不到的地方。
- 不要将电源线悬挂在放置产品的桌子或工作台的边缘上。
- 本产品只能使用原装底座。
- 切勿让水或湿布与底座接口及牛奶壶底部接触。

注意

- 切勿使用其它制造商生产的或未经飞利浦特别推荐的附件或部件。如果您使用了此类附件或部件，则本产品的保修将会失效。
- 不要从中轴上取下起泡圈架，否则可能会造成损坏。
- 本产品只能用于加热或制作奶泡。请勿用其加工任何其他原料。
- 请勿超出奶泡器中所示的最高标示。如果奶泡器装得过满，热牛奶可能会从盖子下溢出，导致烫伤。
- 如果您在加热或制作奶泡之后立即倒出牛奶，牛奶壶底部会非常烫。
- 请勿在使用期间移动本产品，以防止热牛奶从盖子下溢出。
- 正确清洁奶泡器对于获得可靠性能和完美起泡效果非常重要。

- 只能将产品送到飞利浦授权的维修中心检查或修理。不要自行修理，否则产品保修将失效。
 - 务必将底座和牛奶壶置于干燥、平稳的表面。
 - 切勿将本产品放在热的表面上，并防止电源线与热的表面接触。
 - 切勿让儿童在无人看管的情况下使用本产品。
 - 确保从底座上取下牛奶壶之前先关闭产品。
 - 请勿将产品与变压器配合使用，可能会导致危险情况。
 - 不要使用钢丝球、研磨性清洁剂或腐蚀性液体（例如汽油或丙酮）来清洁产品。
 - 本产品仅限于正常家用。它不得用于商店、办公场所、农场或其他工作环境的员工食堂。也不得由酒店、汽车旅馆、提供住宿和早餐的场所及其他住宿环境中的客人使用。
- 符合标准

- 本飞利浦产品符合与电磁场 (EMF) 相关的所有标准。

订购附件

要购买附件和备件，请访问 www.shop.philips.com/service 或请联系飞利浦经销商。您也可以联系您所在国家/地区的飞利浦客户服务中心（联系详情，请参阅全球保修卡）。

环保

- 弃置产品时，请不要将其与一般生活垃圾扔在一起，应将其交给指定的回收中心，这样做有利于环保。（图 1）

保修和支持

如果您需要信息或支持，请访问 www.philips.com/support 或阅读单独的全球保修卡。

故障种类和解决方法

本章归纳了使用本产品时最常见的一些问题。如果您无法根据以下信息解决问题，请访问 www.philips.com/support 查阅常见问题列表，或联系您所在国家/地区的客户服务中心。

问题	可能的原因	解决方法
按钮指示灯闪烁，但产品无法运转。	刚制作完热奶泡或加热牛奶后就马上再次按下牛奶或热奶泡按钮，未让产品冷却。	如果要马上再制作热奶泡或加热牛奶，那么再次使用前，需要让牛奶壶冷却几分钟。只要牛奶壶仍很烫，限温器就不会让产品工作。可以用冷水冲洗牛奶壶内部，使其更快冷却。
产品无法制作奶泡。	牛奶温度过高。 产品的盖子未盖好。	将温热牛奶换成冷牛奶或让产品冷却。 盖好盖子。
	起泡圈未安装到架子上。	将起泡圈安装到架子上。
	所用牛奶类型不适于制作奶泡。	鲜奶的成份并不总是均一的，诸多因素都会影响奶泡质量（如蛋白质含量）。如果牛奶的起泡效果未达到预期，请尝试使用不同类型或品牌的牛奶。使用冰箱冷藏的半脱脂牛奶可获得最佳起泡效果。

问题	可能的原因	解决方法
	牛奶壶内侧被残留的奶所污染，这会妨碍起泡圈架旋转。	清洁起泡圈架和牛奶壶内侧。
按钮按下后未亮起。	产品电源插头没有插上。	将插头插入有接地的电源插座。
奶泡从盖子下溢出。	牛奶壶中放入的牛奶过多。	注入牛奶壶内的牛奶不得超过最高 (MAX) 标示。
牛奶不是很热。	这是正常的。	将牛奶加热至大约 74° C 可确保最佳起泡效果和口感。如果牛奶过热，牛奶蛋白便会开始分解和燃烧。
并非所有牛奶均能起泡。	这是正常的。	产品不能使所有牛奶起泡。产品可以打造最佳奶泡比例。牛奶可与咖啡或其他饮料轻松混合，奶泡持久存留其上，尽享融合美味。



首次使用产品前，用热水冲洗牛奶壶、盖子和起泡圈并晾干所有部件。如果要马上再制作热奶泡或加热牛奶，那么再次使用前，需要让牛奶壶冷却几分钟。您也可以加热牛奶而不起泡。在此情况下，无需使用起泡圈。加热准备，请短暂按下按钮：制作冷奶泡，请按住按钮 3 秒钟。



请勿将底座和牛奶壶浸入水中或任何其它液体中。请勿用洗碗机清洗。请勿使用尖锐物、钢丝绒、研磨性清洁剂或汽油或丙酮等腐蚀性液体清洁产品。

PHILIPS

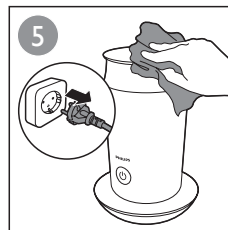
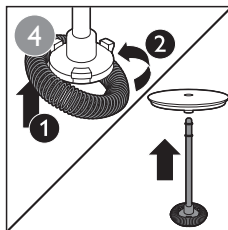
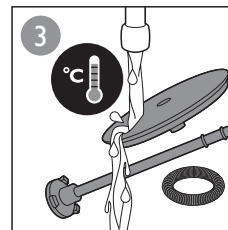
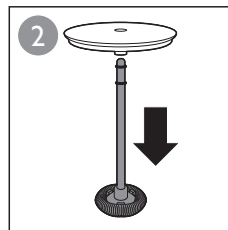
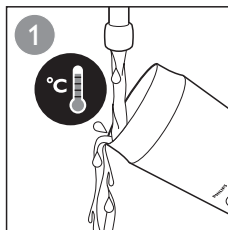
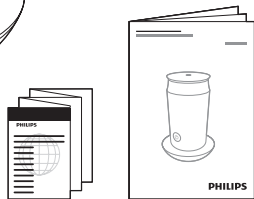
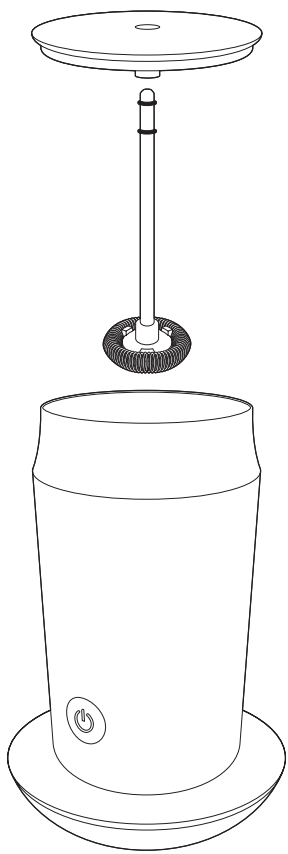
产品 : 飞利浦多功能自动奶泡机
 型号 : CA6500
 额定电压 : 220V~
 额定频率 : 50Hz
 额定输入功率: 420 W
 生产日期 : 请见产品本体
 产地 : 中国广东广州

飞利浦（中国）投资有限公司
 上海市天目西路218号1602-1605
 全国顾客服务热线：4008 800 008

本产品根据国标GB4706.1-2005, GB 4706.19-2008, GB4706.30-2008制造

保留备用

发行日期：28/11/2016



	✓	✓	✓
	✓	✗	✓
	✗	✗	✓

