

Always there to help you

Register your product and get support at
www.philips.com/support

BTS7000



User manual

PHILIPS

Mains fuse

This information applies only to products with a UK mains plug.

This product is fitted with an approved molded plug. If you replace the fuse, use one with:

- the ratings shown on the plug,
- a BS 1362 approval, and
- the ASTA approval mark.

Contact your dealer if you are not sure about what type of fuse to use.

Caution: To conform with the EMC directive (2004/108/EC), do not detach the plug from the power cord.

Copyright in the U.K.

- Recording and playback of material may require consent. See Copyright Act 1956 and The Performer's Protection Acts 1958 to 1972.

Contents

| | |
|-------------------------|---|
| 1 Important | 2 |
| Safety | 2 |
| Care for your product | 3 |
| Care of the environment | 3 |
| Compliance | 3 |
| Help and support | 3 |

| | |
|-----------------------|---|
| 2 Your product | 4 |
| Main unit | 4 |
| Remote control | 5 |
| Connectors | 6 |

| | |
|-----------------------------------------|---|
| 3 Connect and set up | 7 |
| Connect the main unit | 7 |
| Place speakers | 7 |
| Connect to TV | 8 |
| Connect audio from TV and other devices | 8 |

| | |
|---------------------------|----|
| 4 Use your product | 9 |
| Adjust the volume | 9 |
| Choose your sound | 9 |
| MP3 player | 10 |
| Play music via Bluetooth | 10 |
| Play music via NFC | 11 |
| Auto standby | 11 |
| Apply factory settings | 11 |

| | |
|--------------------------|----|
| 5 Update software | 12 |
| Check software version | 12 |
| Update software via USB | 12 |

| | |
|---------------------------------|----|
| 6 Product specifications | 13 |
|---------------------------------|----|

| | |
|--------------------------|----|
| 7 Troubleshooting | 14 |
|--------------------------|----|

1 Important

Read and understand all instructions before you use your product. If damage is caused by failure to follow instructions, the warranty does not apply.

Safety

Risk of electric shock or fire!

- Never expose the product and accessories to rain or water. Never place liquid containers, such as vases, near the product. If liquids are spilt on or into the product, disconnect it from the power outlet immediately. Contact Consumer Care to have the product checked before use.
- Never place the product and accessories near naked flames or other heat sources, including direct sunlight.
- Never insert objects into the ventilation slots or other openings on the product.
- Where the mains plug or an appliance coupler is used as the disconnect device, the disconnect device shall remain readily operable.
- Disconnect the product from the power outlet before lightning storms.
- When you disconnect the power cord, always pull the plug, never the cable.

Risk of short circuit or fire!

- Before you connect the product to the power outlet, ensure that the power voltage matches the value printed on the back or bottom of the product. Never connect the product to the power outlet if the voltage is different.

Risk of injury or damage to this product!

- Never place the product or any objects on power cords or on other electrical equipment.
- If the product is transported in temperatures below 5°C, unpack the product and wait until its temperature

matches room temperature before connecting it to the power outlet.

- Parts of this product can be made of glass. Handle with care to avoid injury and damage.

Risk of overheating!

- Never install this product in a confined space. Always leave a space of at least four inches around the product for ventilation. Ensure curtains or other objects never cover the ventilation slots on the product.

Risk of contamination!

- Do not mix batteries (old and new or carbon and alkaline, etc.).
- Danger of explosion if batteries are incorrectly replaced. Replace only with the same or equivalent type.
- Remove batteries if they are exhausted or if the remote control is not to be used for a long time.
- Batteries contain chemical substances, they should be disposed of properly.

Risk of swallowing batteries!

- The product/remote control may contain a coin/button type battery, which can be swallowed. Keep the battery out of reach of children at all times! If swallowed, the battery can cause serious injury or death. Severe internal burns can occur within two hours of ingestion.
- If you suspect that a battery has been swallowed or placed inside any part of the body, seek immediate medical attention.
- When you change the batteries, always keep all new and used batteries out of reach of children. Ensure that the battery compartment is completely secure after you replace the battery.
- If the battery compartment cannot be completely secured, discontinue use of the product. Keep out of reach of children and contact the manufacturer.



This is CLASS II apparatus with double insulation, and no protective earth provided.

Care for your product

- Use only microfiber cloth to clean the product, such as removing dust and shedding accumulated on the speaker cloth. Do not use any cleaning solvent to clean the wooden panels and speaker cloth.
- The wooden panels may vary on color and grain pattern due to the use of natural materials.

Care of the environment

Disposal of your old product and battery



Your product is designed and manufactured with high quality materials and components, which can be recycled and reused.



This symbol on a product means that the product is covered by European Directive 2012/19/EU.



This symbol means that the product contains batteries covered by European Directive 2013/56/EU which cannot be disposed of with normal household waste.

Inform yourself about the local separate collection system for electrical and electronic

products and batteries. Follow local rules and never dispose of the product and batteries with normal household waste. Correct disposal of old products and batteries helps prevent negative consequences for the environment and human health.

Removing the disposable batteries

To remove the disposable batteries, see battery installation section.

Compliance

CE 0560

This product complies with the radio interference requirements of the European Community. Hereby, WOOX Innovations, declares that this product is in compliance with the essential requirements and other relevant provisions of Directive 1999/5/EC.

A copy of the EC declaration of Conformity is available at www.philips.com/support.

Help and support

For extensive online support, visit www.philips.com/support to:

- Download the user manual and the quick start guide
- watch video tutorials (available only for selected models)
- find answers to frequently answered questions (FAQs)
- email us a question
- chat with our support representative.

Follow the instructions on the website to select your language, and then enter your product model number:

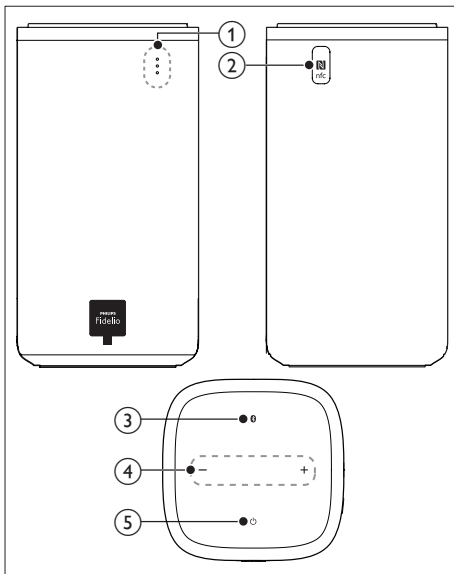
Alternatively, you can contact Consumer Care in your country. Before you contact, note down the model number and serial number of your product. You can find this information on the back or bottom of your product.

2 Your product

Congratulations on your purchase, and welcome to Philips! To fully benefit from the support that Philips offers, register your product at www.philips.com/welcome.

Main unit

This product is comprised of left and right speakers.



① Red/white/blue LEDs

Red LED

- Lights up when this product is switched to standby.

White LED

- Lights up when this product is switched on.
- Blinks once each time you press a button on the remote control.
- Blinks twice when Dolby Digital audio is input.

- Blinks continuously when no audio from the selected HDMI ARC source is detected, or when an unsupported audio format is detected.

Blue LED

- Lights up when you switch to Bluetooth mode and Bluetooth devices are paired.
- Blinks when you switch to Bluetooth mode and Bluetooth devices are not paired.

② NFC tag

Tap the NFC-enabled device on the tag for Bluetooth connection.

③ (Bluetooth)

Switch to Bluetooth mode.

④ +/- (Volume)

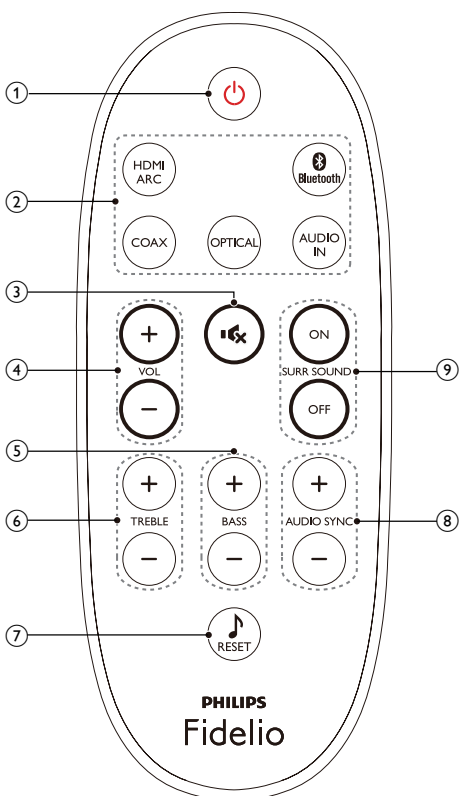
Increase or decrease volume.

⑤ (Standby-On)

Switch this product on or to standby.

Remote control

This section includes an overview of the remote control.



① ⏻ (Standby-On)

- Switch this product on or to standby.
- When EasyLink is enabled, press and hold for at least three seconds to switch all connected HDMI CEC compliant devices to standby.

② Source buttons

HDMI ARC: Switch your source to HDMI ARC connection

Bluetooth: Switch to Bluetooth mode; Press and hold three seconds to break the current Bluetooth connection.

COAX: Switch your audio source to the coaxial connection.

OPTICAL: Switch your audio source to the optical connection.

AUDIO IN: Switch your audio source to the AUDIO IN connection (3.5mm jack).

③ 🔇 (Mute)

Mute or restore volume.

④ VOL +/-

Increase or decrease volume.

⑤ BASS +/-

Increase or decrease bass.

⑥ TREBLE +/-

Increase or decrease treble.

⑦ RESET 🎵

Set the bass and treble to the default settings.

⑧ AUDIO SYNC +/-

Increase or decrease audio delay.

⑨ SURR. SOUND ON/OFF

Turn surround sound on or off.

Replace battery



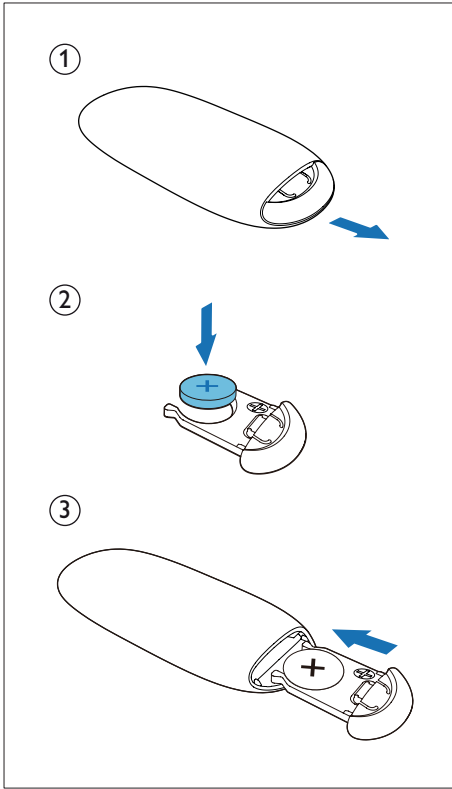
Warning

- Danger of explosion if battery is incorrectly replaced. Replace only with the same or equivalent type.
- The product/remote control may or may not contain a coin/button type battery, which can be swallowed. Keep the battery out of reach of children at all times!



Caution

- The battery contains perchlorate material, handle it with care. For information see www.dtsc.ca.gov/hazardouswaste/perchlorate.

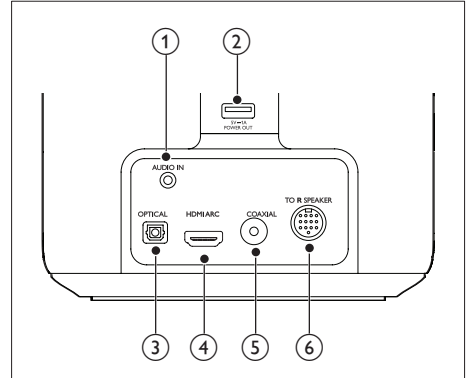


- 1 Open the battery compartment.
- 2 Insert one CR2025 battery, with the polarity (+/-) as indicated.
- 3 Close the battery compartment.

Connectors

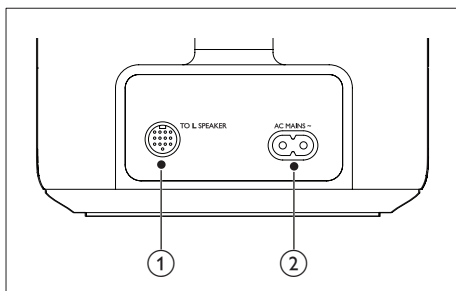
This section includes an overview of the connectors available on this product.

On the left speaker



- 1 **AUDIO IN**
Audio input from, for example, an MP3 player (3.5mm jack).
- 2 **USB connector (not for media play)**
 - Used for software upgrade of this product.
 - Used to charge a USB device.
- 3 **OPTICAL**
Connect to an optical audio output on the TV or a digital device.
- 4 **HDMI ARC**
Connect to the HDMI (ARC) input on the TV.
- 5 **COAXIAL**
Connect to a coaxial audio output on the TV or a digital device.
- 6 **TO R SPEAKER**
Connect to the right speaker.

On the right speaker



- ① **TO L SPEAKER**
Connect to the left speaker.
- ② **AC MAINS~**
Connect to the power supply.

3 Connect and set up

This section helps you connect this product to a TV and other devices, and then set it up. For information about the basic connections of this product and accessories, see the quick start guide.

Note

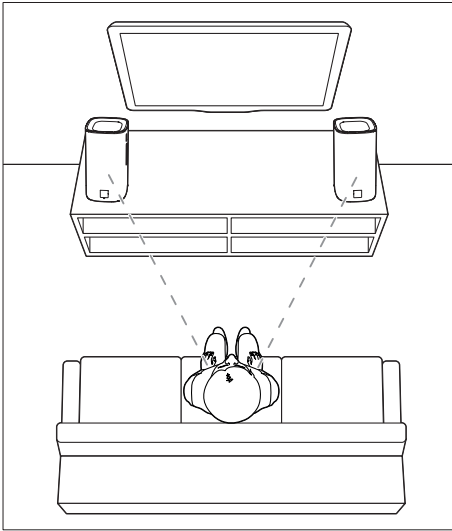
- For identification and supply ratings, see the type plate at the back or bottom of the product.
- Before you make or change any connections, make sure that all devices are disconnected from the power outlet.

Connect the main unit

With the supplied DIN cable, connect the left speaker to the right speaker as main unit. See the quick start guide for details.

Place speakers

For best sound effect, position the speakers towards the seating position and place them close to your ear level (seated).



- 1 Using a High Speed HDMI cable, connect the **HDMI ARC** connector on the left speaker to the HDMI (ARC) input on the TV.
 - The **HDMI ARC** connector on the TV might be labeled differently. For details, see the TV user manual.
- 2 On your TV, turn on HDMI-CEC operations. For details, see the TV user manual.

Note

- If your TV is not HDMI ARC compliant, connect an audio cable to hear the TV audio through the speakers of this product (see 'Connect audio from TV and other devices' on page 8).
- If your TV has a DVI connector, you can use an HDMI/DVI adapter to connect to TV. However, some of the features may not be available.

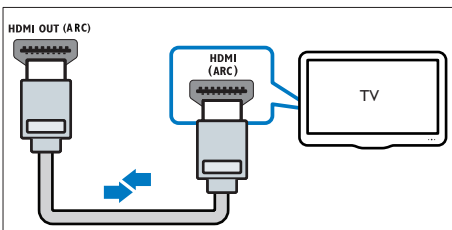
Connect to TV

Connect this product to a TV. You can listen to audio from TV programs through the speakers of this product. Use the best quality connection available on this product and TV.

Connect to TV through HDMI (ARC)

Best quality audio

This product supports HDMI with Audio Return Channel (ARC). If your TV is HDMI ARC compliant, you can hear the TV audio through the speakers of this product by using a single HDMI cable.



Connect audio from TV and other devices

Play audio from TV or other devices through the speakers of this product.

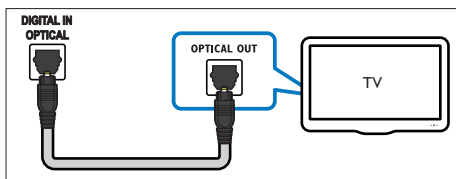
Use the best quality connection available on this product, TV, and other devices.

Note

- When this product and TV are connected through **HDMI ARC**, an audio connection is not required.

Option 1: Connect audio through a digital optical cable

Best quality audio

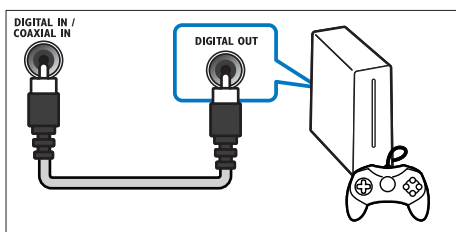


Using an optical cable, connect the **OPTICAL** connector on the left speaker of this product to the **OPTICAL OUT** connector on the TV or other device.

- The digital optical connector might be labeled **SPDIF** or **SPDIF OUT**.

Option 2: Connect audio through a digital coaxial cable

Good quality audio



1 Using a coaxial cable, connect the **COAXIAL** connector on the left speaker of this product to the **COAXIAL/DIGITAL OUT** connector on the TV or other device.

- The digital coaxial connector might be labeled **DIGITAL AUDIO OUT**.

4 Use your product

This section helps you use this product to play audio from connected devices.

Before you start

- Make the necessary connections described in the quick start guide and the user manual.
- Switch this product to the correct source for other devices.

Adjust the volume

- 1 Press **VOL +/-** to increase or decrease a volume level.
 - To mute sound, press **Mute**.
 - To restore the sound, press **Mute** again or press **VOL +/-**.
- ↳ If the volume is set to the minimum, the white LED on the speaker blinks in full brightness and in half brightness alternatively.
- ↳ If the volume is set to the maximum, the white LED on the speaker blinks twice.

Choose your sound

This section helps you choose the ideal sound for your video or music.

Surround sound mode

Experience an immersive audio experience with surround sound modes.

- 1 Press **SURR. SOUND ON/OFF** to turn surround mode on or off.
 - **On:** Create a surround listening experience.
 - **Off:** Two-channel stereo sound. Ideal for listening to music.

Equalizer

Change the high frequency (treble) and low frequency (bass) settings of this product.

- 1 Press **TREBLE +/-** or **BASS +/-** to change the frequency.
 - ↳ If the treble or bass is set to the maximum or minimum, the white LED on the speaker blinks twice.
- 2 To reset the bass and treble to the default setting, press **RESET**.

Synchronize picture and sound

If the audio and video are not synchronized, delay the audio to match the video.

- 1 Press **AUDIO SYNC +/-** to synchronize the audio with the video.
 - **AUDIO SYNC +** increases the sound delay, and **AUDIO SYNC -** decreases the sound delay.
 - ↳ If the value of sound delay is set to the maximum or minimum, the white LED on the speaker blinks twice.

MP3 player

Connect your MP3 player to play your audio files or music.

What you need

- An MP3 player.
- A 3.5mm stereo audio cable.

- 1 Using the 3.5mm stereo audio cable, connect the MP3 player to the **AUDIO IN** connector on the left speaker.
- 2 Press **AUDIO IN**.
- 3 Press the buttons on the MP3 player to select and play audio files or music.
 - On the MP3 player, it is recommended to set the volume in the range of 80% maximum volume.

Play music via Bluetooth

Through Bluetooth, connect your product with a Bluetooth device (such as an iPad, iPhone, iPod touch, Android phone, or laptop), and then you can listen to the audio files stored on the device through the speakers of this product.

What you need

- A Bluetooth device which supports Bluetooth profile A2DP, and with Bluetooth version as 3.0 (EDR).
- The operational range between the main unit (left and right speakers) and a Bluetooth device is approximately 10 meters (30 feet).

- 1 Press **Bluetooth** on the remote control to switch this product to Bluetooth mode.
 - ↳ The blue LED on the left speaker blinks.
- 2 On the Bluetooth device, switch on Bluetooth, search for and select **Philips BTS7000** to start connection (see the user manual of the Bluetooth device on how to enable Bluetooth).
 - ↳ During connection, the blue LED on the left speaker blinks.
- 3 Wait until you hear a beep sound from this product.
 - ↳ The blue LED on the left speaker lights up.
 - ↳ If the connection fails, the blue LED on the left speaker blinks continually.
- 4 Select and play audio files or music on your Bluetooth device.
 - During play, if a call is coming, music play is paused. Play resumes when the call ends.
 - If music streaming is interrupted, place the Bluetooth device closer to this product.

- 5 To exit Bluetooth, select other source.
 - When your switch back to Bluetooth mode, Bluetooth connection remains active.
- 3 Select and play audio files or music on your NFC device.
 - To break the connection, tap again the NFC device with the **NFC** tag on this product.



Note

- The music streaming may be interrupted by obstacles between the device and this product, such as wall, metallic casing that covers the device, or other devices nearby that operate in the same frequency.
- If you want to connect this product with another Bluetooth device, press and hold **Bluetooth** on the remote control to break the current Bluetooth connection.

Play music via NFC

NFC (Near Field Communication) is a technology that enables short-range wireless communication between NFC-enabled devices, such as mobile phones.

What you need

- A Bluetooth device with NFC function.
 - For pairing, tap the NFC device on the **NFC** tag of this product.
 - The operational range between the main unit (left and right speakers) and a NFC device is approximately 10 meters (30 feet).
- 1 Enable NFC on the Bluetooth device (see the device' s user manual for details).
 - 2 Tap the NFC device on the **NFC** tag of this product until you hear a beep sound from this product.
 - ↳ The blue LED on the left speaker lights up, and the NFC device is connected to this product via Bluetooth.
 - ↳ If the connection fails, the blue LED on the left speaker blinks continually.

Auto standby

If no audio/video playback is detected from a connected device for 15 minutes, this product automatically switches to standby.

Apply factory settings

You can reset this product to the default settings programmed at the factory.

- 1 In any source mode, press and hold **RESET** for five seconds.
 - ↳ When the factory settings restore is complete, the product automatically switches off and restarts.

5 Update software

To get the best features and support, update your product with the latest software.

What you need

- Connect this product to your TV.

Check software version

- In HDMI ARC mode, press **TREBLE -**, **BASS -** and **VOL -** on the remote control.

Update software via USB

- 1 Check the latest software version on www.philips.com/support.
 - Search for your model and click on "Software and drivers".
- 2 Download the software into a USB storage device.
 - ① **Unzip the download if zipped, and make sure that the unzipped file is named "BTS7000.BIN".**
 - ② **Put the "BTS7000.BIN" file in the root directory.**
- 3 Connect the USB storage device to the USB connector (**POWER OUT**) on the left speaker of this product.
- 4 Switch this product to the HDMI ARC source, and switch your TV to the HDMI source.

- 5 On the remote control, within 6 seconds press **⏻** twice, and **VOL +** once, then hold down **⏻**.

↳ If an upgrade media is detected, on the TV screen you are prompted to start the update.

↳ If an upgrade media is not detected, an error message is displayed on the TV screen. Make sure that the latest software of this product is put in the USB storage device.

- 6 Press **⏻** to start the update.

- 7 Wait until the update is completed.

↳ If the update is complete, this product automatically turns off and on again.

Caution

- Do not turn off the power or remove the USB storage device when the software update is in progress because you might damage this player.

6 Product specifications



Note

- Specifications and design are subject to change without notice.

Amplifier

- Total output power: 100W RMS (+/- 0.5 dB, 30%THD) / 80W RMS (+/- 0.5 dB, 10%THD)
- Frequency response: 63 Hz-20 kHz / ± 3 dB
- Signal-to-noise ratio: > 65 dB (CCIR) / (A-weighted)
- Input sensitivity:
 - AUDIO IN: 400 mV

Audio

- S/PDIF Digital audio input:
 - Coaxial: IEC 60958-3
 - Optical: TOSLINK

Bluetooth

- Bluetooth profiles: A2DP
- Bluetooth version: 3.0 (EDR)

USB

- USB connector (not for media play):
 - Used for software upgrade of this product
 - Used to charge a USB device
- 5V \equiv 1A

Main unit (left and right speakers)

- Power supply: 110-240 V~, 50/60 Hz
- Power consumption: 50 W
- Standby power consumption: ≤ 0.5 W

- Speaker impedance:
 - Woofer: 4 ohm
 - tweeter: 8 ohm
- Speaker drivers: 2 x 101.6 mm (4") woofer + 2 x 25.4 mm (1") tweeter
- Dimensions (WxHxD): 160 x 305 x 160 mm
- Weight: 4.4 kg

Remote control batteries

- 1 x CR2025

Standby information

- When the product remains inactive for 15 minutes, it automatically switches to standby or networked standby.
- The power consumption in standby or networked standby is less than 0.5W.
- To deactivate Bluetooth connection, press and hold the Bluetooth button on the remote control.
- To activate Bluetooth connection, enable Bluetooth connection on your Bluetooth device, or enable Bluetooth connection via the NFC tag (if available).

7 Troubleshooting



Warning

- Risk of electric shock. Never remove the casing of the product.

To keep the warranty valid, never try to repair the product yourself.

If you have problems using this product, check the following points before you request service. If you still have a problem, get support at www.philips.com/support.

Main unit

The buttons on this product do not work.

- Disconnect this product from the power supply for a few minutes, then reconnect.

Sound

No sound from the speakers of this product.

- Connect the audio cable from this product to your TV or other devices. However, you do not need a separate audio connection when:
 - this product and TV are connected through **HDMI ARC** connection.
- Reset this product to its factory settings (see 'Apply factory settings' on page 11).
- On the remote control, select the correct audio input.
- Make sure that this product is not muted.

Distorted sound or echo.

- If you play audio from the TV through this product, make sure that the TV is muted.

Audio and video are not synchronized.

- Press **AUDIO SYNC +/-** to synchronize the audio with the video.

Bluetooth

A device cannot connect with this product.

- The device does not support the compatible profiles required for this product.
- You have not enabled the Bluetooth function of the device. See the user manual of the device on how to enable the function.
- The device is not correctly connected. Connect the device correctly (see 'Play music via Bluetooth' on page 10).
- This product is already connected with another Bluetooth device. Disconnect the connected device, then try again.

Quality of audio play from a connected Bluetooth device is poor.

- The Bluetooth reception is poor. Move the device closer to this product, or remove any obstacle between the device and this product.

The connected Bluetooth device connects and disconnects constantly.

- The Bluetooth reception is poor. Move the device closer to this product, or remove any obstacle between the device and this product.
- Turn off Wi-Fi function on the Bluetooth device to avoid interference.
- For some Bluetooth, the Bluetooth connection can be deactivated automatically to save power. This does not indicate any malfunction of this product.

NFC

A device cannot connect with this product via NFC.

- Make sure that the device is supported by NFC.
- Make sure that NFC is enabled on the device (see the device's user manual for details).
- For pairing, tap the NFC device on the **NFC** tag of this product.



Specifications are subject to change without notice

2014 © WOOX Innovations Limited. All rights reserved.

This product was brought to the market by WOOX Innovations Limited or one of its affiliates, further referred to in this document as WOOX Innovations, and is the manufacturer of the product. WOOX Innovations is the warrantor in relation to the product with which this booklet was packaged. Philips and the Philips Shield Emblem are registered trademarks of Koninklijke Philips N.V.

BTS7000_10_UM_V3.0

