

Introduction:

Philips strives to continually bring you the best experience from our products. To obtain the optimal latest features, you are highly recommended to upgrade the firmware of your player. There are two software's (MCU and device) instructions, please follow them carefully.

Preparation for firmware upgrade:

- A Windows OS PC with an archive utility that supports the ZIP-format at administrator's right (e.g. WinZip for Windows).
- A mini USB cable as below



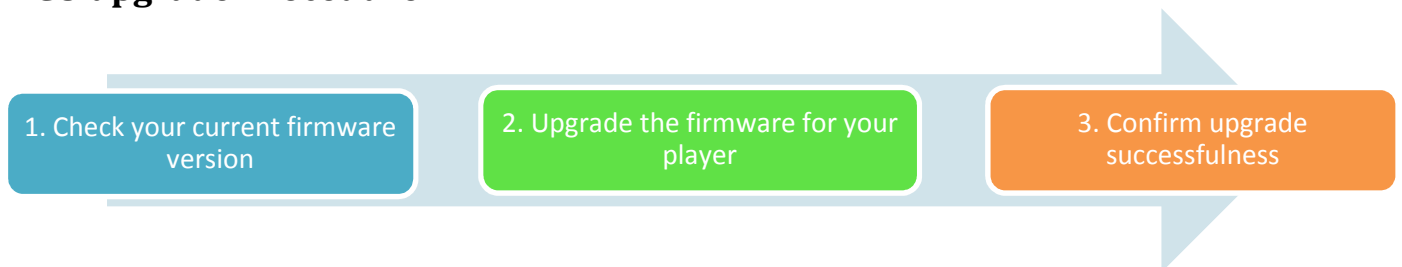
- A USB flash device with enough free space to hold the firmware file. An empty one is advised to avoid a crash among files.



(You can check the size of the firmware file at the top of the screen.)

- Download the zip file to your PC, and you will find two folders: "BTB7150_MCU" and "BTB7150_1A26"

MCU upgrade Procedure:



Step 1: Check your current firmware version

1. In standby mode , press and hold Play/Pause key for 3 seconds
2. Version information will be scrolled out from right to left on display
3. Compare the firmware version displayed to the latest version. If the existing firmware in your player is of an earlier version than the new release, please proceed to **Step 2**.

Otherwise, the latest firmware is installed and hence an upgrade is not needed.

Step 2: Upgrade the firmware for your player

1. From the downloaded files, copy the BOOT681X.bin to the root directory of an empty USB storage device
2. Upgrade the firmware to the player

Warning: DO NOT press any buttons or interrupt the main supply during the upgrading process, otherwise the product may become defective.

- i. Turn on the player
- ii. **Make sure there is no disc in the tray**
- iii. Press the <SOURCE> button on the remote control repeatedly to select **NO USB** shown on display



- iv. Insert the USB storage device with the bin file into the player
- v. The device will read the file and start upgrade automatically



- vi. "MCU--UP" will be shown on display

Note: Please do not power off or remove the USB storage device during upgrade

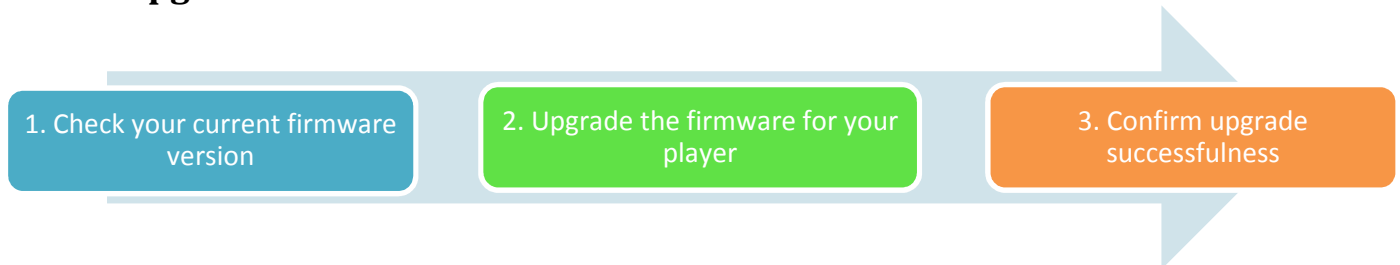


- vii. The upgrade process will take about 1-2 minutes, when it is completed, the display will be changed to "--:--"
- viii. The upgrade is completed, please remove the USB storage device

Step 3: Confirm upgrade successfulness

1. Go over **Step 1 Check your current firmware version** to verify if the new firmware is correctly upgraded.
2. If the latest firmware has not been installed, repeat '**Step 2 Upgrade the firmware for your player**' and '**Step 3 Confirm upgrade successfulness**'.

Device upgrade Procedure:



Step 1: Check your current firmware version

4. Turn on the player.
5. Press the **<SOURCE>** button on the remote control repeatedly to select **DAB** shown on display
6. Press **◀◀ / ▶▶** to scroll to the option to [System]
7. Press [OK] button on remote control
8. Press **◀◀ / ▶▶** to scroll to the option to [SW VER]
9. Press [OK] button on remote control
10. The firmware version will be displayed on the TV screen.
11. Compare the firmware version displayed to the latest version. If the existing firmware in your player is of an earlier version than the new release, please proceed to **Step 2**.

Otherwise, the latest firmware is installed and hence an upgrade is not needed.

Step 2: Upgrade the firmware for your player

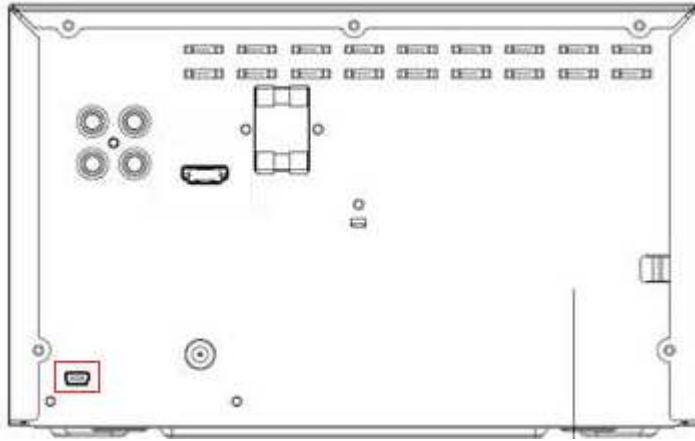
You can upgrade your firmware via PC.

Upgrade firmware via PC

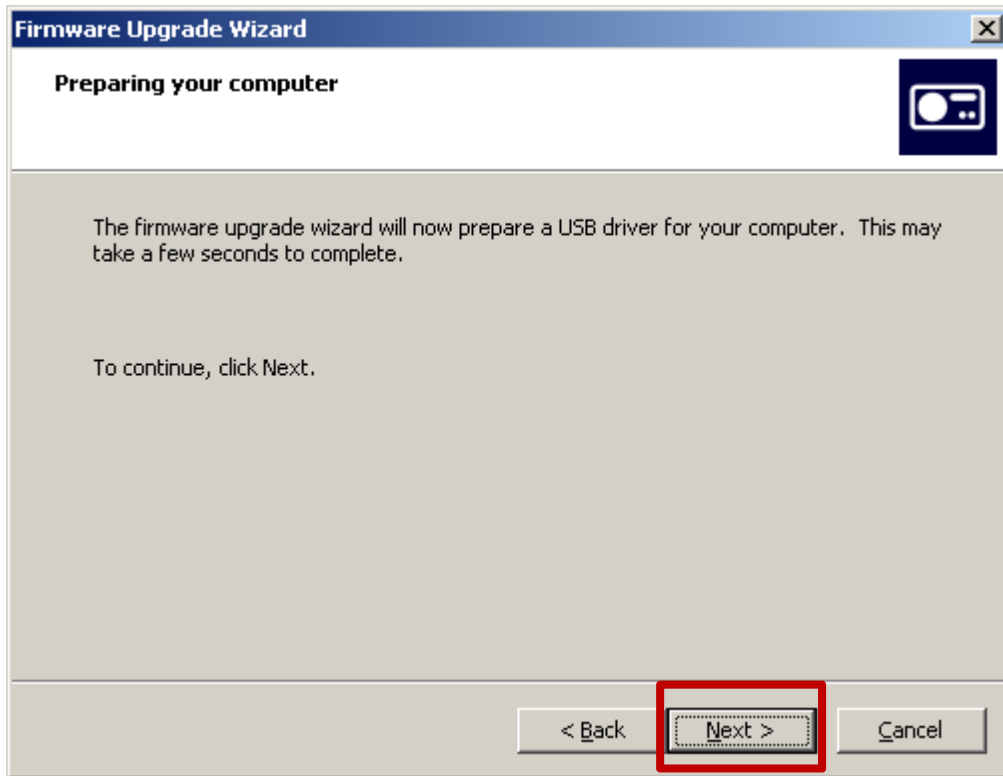
1. Locate the folder "BTB7150_1A26" from the downloaded files on your PC
2. Upgrade the firmware to the player

Warning: DO NOT press any buttons or interrupt the main supply during the upgrading process, otherwise the product may become defective.

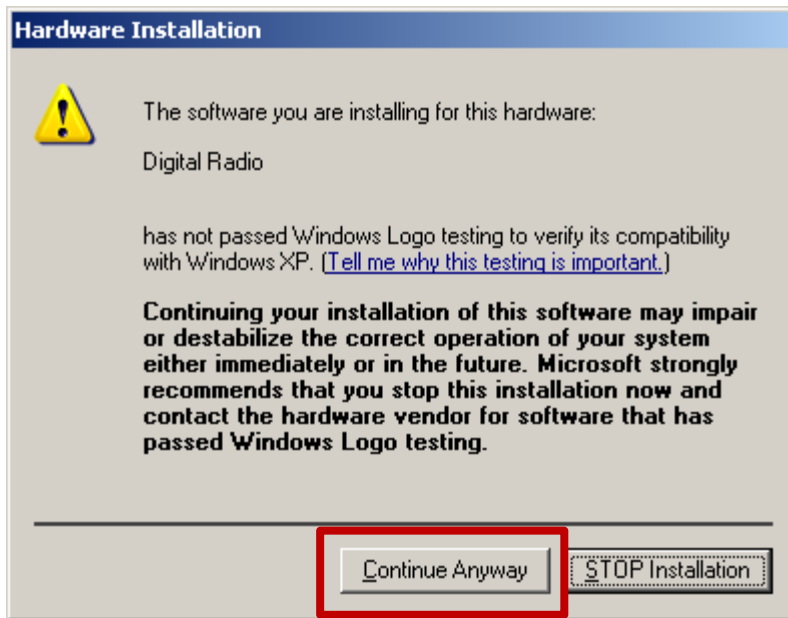
- i. Turn on the player.
- ii. **Make sure there is no disc in the tray**
- iii. Press the **<SOURCE>** button on the remote control repeatedly to select **DAB** shown on display
- iv. Press **◀◀ / ▶▶** to scroll the option to [System]
- v. Press [OK] to button on remote
- vi. Press **◀◀ / ▶▶** to scroll the option to [UPGRADE]
- vii. Press **◀◀ / ▶▶** to scroll the option to [Y]



- ix.
- x. In PC, unzip the downloaded file and find the folder “BTB7150_1A26”, then run the exe file inside it
- xi. Follow the steps on PC to finish the software upgrade
- xii. Click “Next” to continue, the preparation will take a few minutes

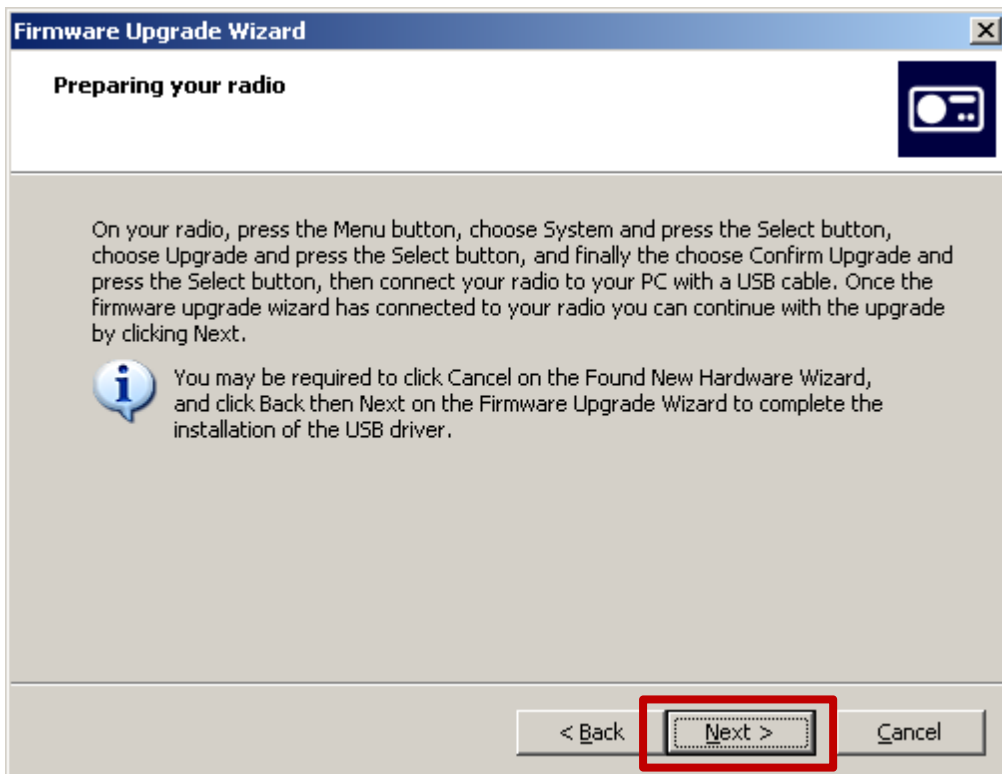


- xiii. When a pop up appears that the drive is not passed the Microsoft certification, click “Continue Anyway” to continue:

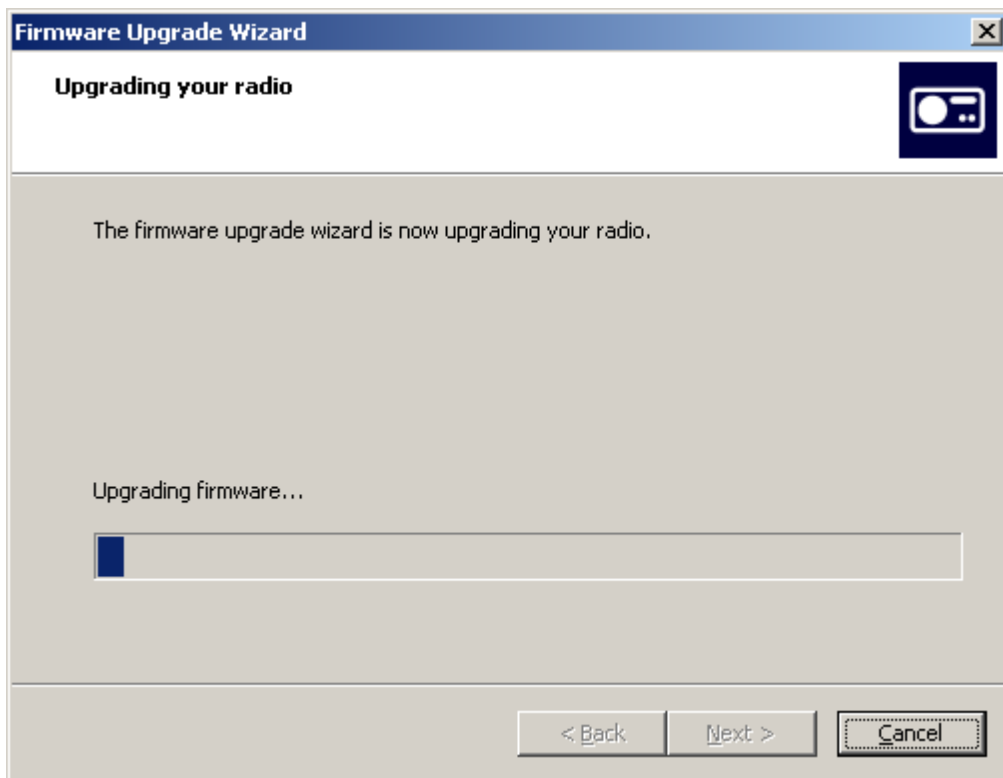


ii.

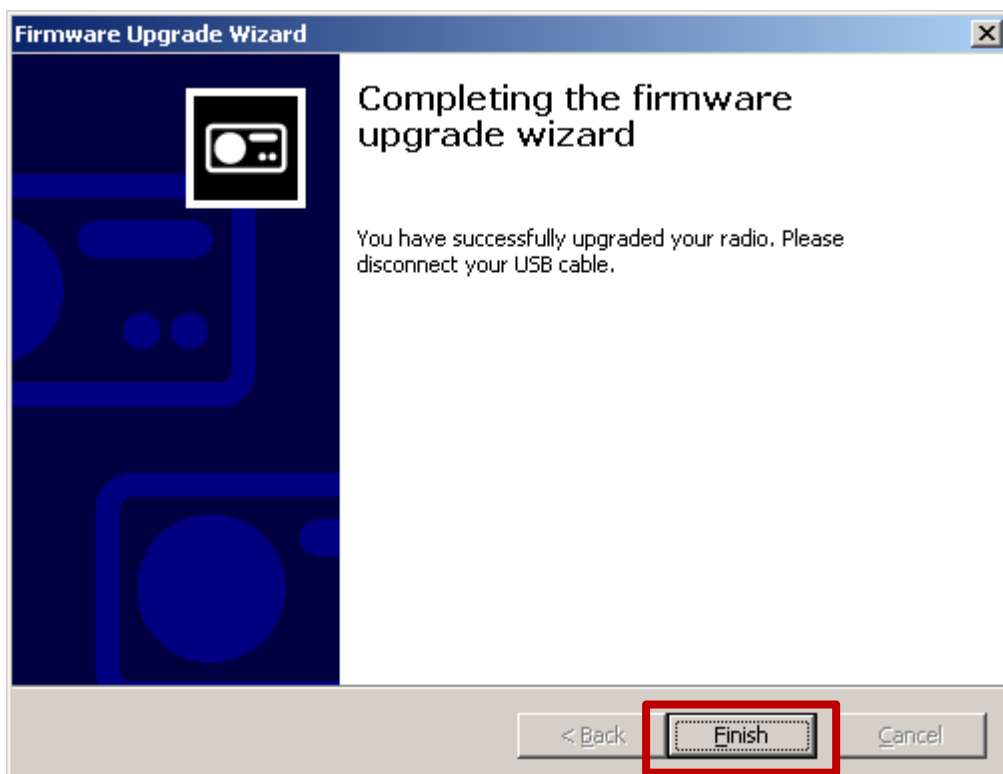
- i. Click "Next" to continue. Note: Please do not follow the instructions described on PC, as you have completed from steps i)-viii)



- ii. Your PC is now installing the new firmware into BTB7150, The process will take several minutes:



- iii. Please wait until the completion screen is shown on your PC and click "Finish" to complete:



Step 3: Confirm upgrade successfulness

3. Go over **Step 1 Check your current firmware version** to verify if the new firmware is correctly upgraded.
4. If the latest firmware has not been installed, repeat '**Step 2 Upgrade the firmware for your player**' and '**Step 3 Confirm upgrade successfulness**'.
5. Perform a factory reset on the player:
 - From the menu, select **[Setup] > [Preference] > [Default]**.