

# Always there to help you

Register your product and get support at  
[www.philips.com/support](http://www.philips.com/support)



BTB2315



## User manual

# PHILIPS



# Contents

---

<b>1</b>	<b>Important</b>	<b>2</b>
	Safety	2

---

<b>2</b>	<b>Your micro system</b>	<b>4</b>
	Introduction	4
	What's in the box	4
	Overview of the product	5
	Overview of the remote control	6

---

<b>3</b>	<b>Get started</b>	<b>7</b>
	Connect speakers	7
	Connect FM antenna	7
	Connect power	7
	Demonstrate the features	8
	Prepare the remote control	8
	Set clock	8
	Turn on	8

---

<b>4</b>	<b>Play</b>	<b>10</b>
	Play from disc	10
	Play from USB	10
	Control play	11
	Skip to a track	11
	Program tracks	11
	Play from Bluetooth-enabled devices	11

---

<b>5</b>	<b>Listen to the radio</b>	<b>13</b>
	Listen to DAB+ radio	13
	Listen to FM radio	14

---

<b>6</b>	<b>Other features</b>	<b>16</b>
	Set the alarm timer	16
	Set the sleep timer	16
	Adjust the display brightness	16
	Listen to an external device	16

---

<b>7</b>	<b>Product information</b>	<b>18</b>
	Specifications	18
	USB playability information	19
	Supported MP3 disc formats	19
	RDS program types	19

---

<b>8</b>	<b>Troubleshooting</b>	<b>20</b>
----------	------------------------	-----------

---

<b>9</b>	<b>Notice</b>	<b>22</b>
	Compliance	22
	Care for your product	22
	Care for your environment	22
	Trademark notice	23
	Copyright	23

# 1 Important

## Safety



This 'bolt of lightning' indicates uninsulated material within the device may cause an electrical shock. For the safety of everyone in your household, please do not remove the covering.

The 'exclamation mark' calls attention to features for which you should read the enclosed literature closely to prevent operating and maintenance problems.

**WARNING:** To reduce the risk of fire or electric shock, the device should not be exposed to rain or moisture and objects filled with liquids, such as vases, should not be placed on the device.

**CAUTION:** To prevent electric shock, fully insert the plug. (For regions with polarized plugs: To prevent electric shock, match wide blade to wide slot.)

## Important Safety Instructions

- Follow all instructions.
- Heed all warnings.
- Do not use this device near water.
- Clean only with dry cloth.
- Do not block any ventilation openings. Install in accordance with the manufacturer's instructions.
- Do not install near any heat sources such as radiators, heat registers, stoves, or other devices (including amplifiers) that produce heat.

- Protect the power cord from being walked on or pinched, particularly at plugs, convenience receptacles, and the point where they exit from the device.
- Only use attachments/accessories specified by the manufacturer.
- Use only with the cart, stand, tripod, bracket, or table specified by the manufacturer or sold with the device. When a cart is used, use caution when moving the cart/device combination to avoid injury from tip-over.



- Unplug this device during lightning storms or when unused for long periods of time.
- Refer all servicing to qualified service personnel. Servicing is required when the device has been damaged in any way, such as power-supply cord or plug is damaged, liquid has been spilled or objects have fallen into the device, the device has been exposed to rain or moisture, does not operate normally, or has been dropped.
- Battery usage **CAUTION** – To prevent battery leakage which may result in bodily injury, property damage, or damage to the unit:
  - Install all batteries correctly, + and - as marked on the unit.
  - Do not mix batteries (old and new or carbon and alkaline, etc.).
  - Batteries (packed or installed) shall not be exposed to excessive heat such as sunshine, fire or the like.
  - Remove batteries when the unit is not used for a long time.
- The device shall not be exposed to dripping or splashing.
- Do not place any sources of danger on the device (e.g. liquid filled objects, lighted candles).

- Where the MAINS plug or an appliance coupler is used as the disconnect device, the disconnect device shall remain readily operable.



### Warning

- Never remove the casing of this device.
- Never lubricate any part of this device.
- Never place this device on other electrical equipment.
- Keep this device away from direct sunlight, naked flames or heat.
- Never look into the laser beam inside this device.
- Ensure that you always have easy access to the power cord, plug, or adaptor to disconnect this device from the power.

## 2 Your micro system

Congratulations on your purchase, and welcome to Philips! To fully benefit from the support that Philips offers, register your product at [www.philips.com/welcome](http://www.philips.com/welcome).

### Introduction

With this unit, you can:

- Enjoy audio from discs, Bluetooth-enabled devices, USB storage devices, or other external devices;
- Listen to FM or DAB+ radio stations.

You can enrich sound output with below sound effect:

- Digital Sound Control (DSC)
  - DSC 1: Balance
  - DSC 2: Warm
  - DSC 3: Bright
  - DSC 4: Powerful
  - DSC 5: Clear

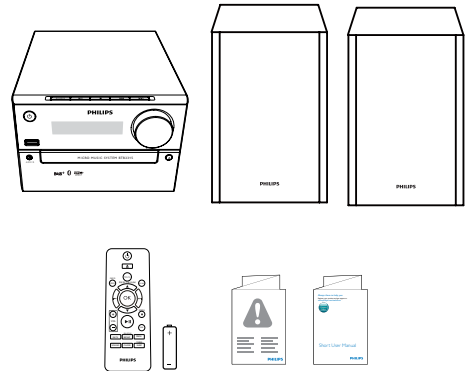
The unit supports these media formats:



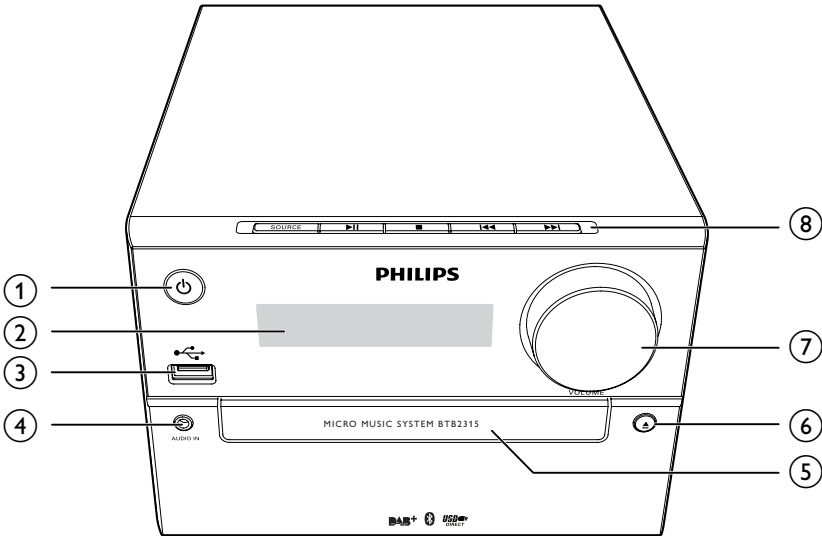
### What's in the box

Check and identify the contents of your package:

- Main unit
- 2 x speakers
- Remote control (with one AAA battery)
- Short user manual
- Safety and notice



## Overview of the product



① 

- Turn on the product.
- Switch to standby mode or Eco power standby mode.

② **Display panel**

- Show current status.

③ 

- Connect USB storage devices.
- Charge your device.

④ **AUDIO IN**

- Connect external audio devices.

⑤ **Disc compartment**

⑥ 

- Open or close the disc compartment.

⑦ **VOLUME**

- Adjust volume.

⑧ **SOURCE**

- Select a source: DISC, USB, FM, DAB, AUDIO IN, BT (Bluetooth).



- Start, pause, or resume play.

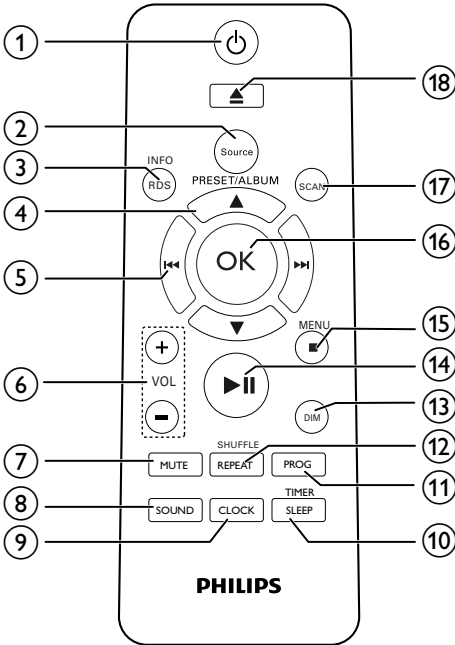


- Stop play or erase a program.



- Skip to previous/next track.
- Search within a track/disc/USB.
- Tune to a radio station.
- Adjust time.

## Overview of the remote control



- ① **⏻**
  - Turn the product on or off.
  - Switch to standby mode or Eco power standby mode.
- ② **SOURCE**
  - Select a source: DISC, USB, DAB, FM, BT(Bluetooth), AUDIO IN.
- ③ **INFO/RDS**
  - Display current status or the disc information.
  - For selected FM or DAB+ radio stations, display RDS information.
- ④ **PRESET/ALBUM ▲ / ▼**
  - Select a preset radio station.
  - Skip to previous/next album.
- ⑤ **◀▶ / ⏏**
  - Skip to the previous/next track.
  - Search within a track/disc/USB.

- Tune to a radio station.
- Adjust time.
- ⑥ **VOL +/-**
  - Adjust volume.
- ⑦ **MUTE**
  - Mute or restore volume.
- ⑧ **SOUND**
  - Select a sound effect: **[BALANCE]** (Balance), **[WARM]** (Warm), **[BRIGHT]** (Bright), **[POWERFUL]** (Powerful), or **[CLEAR]** (Clear).
- ⑨ **CLOCK**
  - Set the clock.
  - View clock information.
- ⑩ **SLEEP/TIMER**
  - Set sleep timer.
  - Set alarm timer.
- ⑪ **PROG**
  - Program tracks.
  - Program radio stations.
- ⑫ **REPEAT/SHUFFLE**
  - Select repeat or shuffle play mode.
- ⑬ **DIM**
  - Adjust display brightness.
- ⑭ **▶||**
  - Start, pause, or resume play.
- ⑮ **■ / MENU**
  - Stop play or erase a program.
  - Access DAB+ or FM menu.
- ⑯ **OK**
  - Confirm a selection.
- ⑰ **SCAN**
  - Scan FM or DAB+ radio stations.
- ⑱ **▲**
  - Press to open or close the disc compartment.



# 3 Get started

## ! Caution

- Use of controls or adjustments or performance of procedures other than herein may result in hazardous radiation exposure or other unsafe operation.

Always follow the instructions in this chapter in sequence.

If you contact Philips, you will be asked for the model and serial number of this apparatus. The model number and serial number are on the back of the apparatus. Write the numbers here:

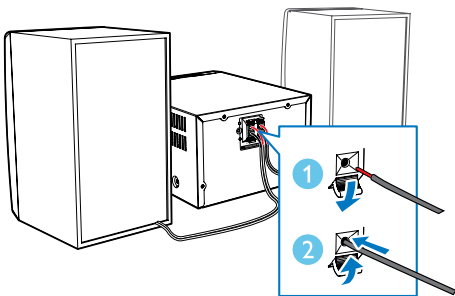
Model No. \_\_\_\_\_

Serial No. \_\_\_\_\_

## Connect speakers

### ≡ Note

- For optimal sound, use the supplied speakers only.
- Connect only speakers with impedance that is the same or higher than the supplied speakers. Refer to the Specifications section of this manual.

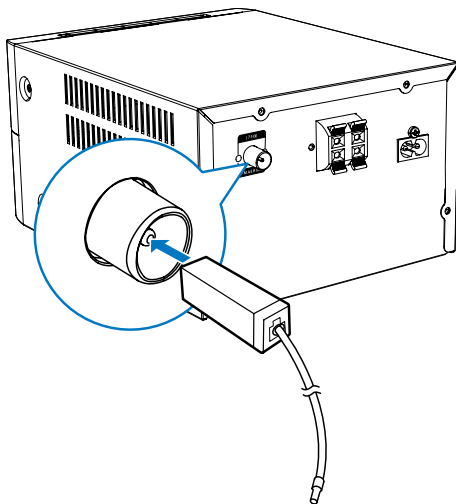


## Connect FM antenna

### \* Tip

- For optimal reception, fully extend and adjust the position of the antenna.
- For better FM stereo reception, connect an outdoor FM antenna to the **FM AERIAL** socket.

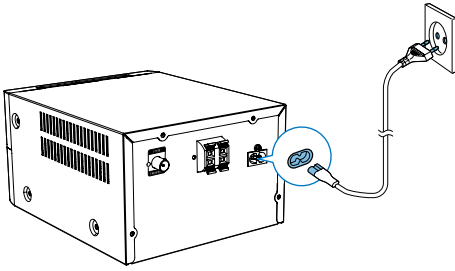
Connect the supplied FM antenna to the **FM AERIAL** socket on back of the product.



## Connect power

### ! Caution

- Risk of product damage! Ensure that the power supply voltage corresponds to the voltage printed on the back or the underside of the product.
- Risk of electric shock! When you unplug the AC power cord, always pull the plug from the socket. Never pull the cord.
- Before you connect the AC power cord, ensure that you have completed all other connections.



## Demonstrate the features

In standby mode, press **■** to demonstrate features of this device.

- ↳ The features are displayed one by one across the display panel.
- To turn off the demonstration, press **■** again.

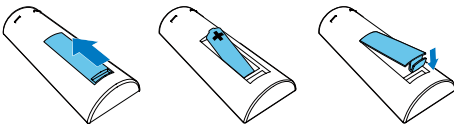
## Prepare the remote control

### ! Caution

- Risk of explosion! Keep batteries away from heat, sunshine or fire. Never discard batteries in fire.
- Risk of decreased battery life! Never mix different brands or types of batteries.
- Risk of product damage! When the remote control is not used for long periods, remove the batteries.

To insert the remote control battery:

- 1 Open the battery compartment.
- 2 Insert the supplied AAA battery with correct polarity (+/-) as indicated.
- 3 Close the battery compartment.



## Set clock

- 1 In standby mode, press and hold **CLOCK** on the remote control for more than two seconds.  
↳ **[24 HOUR]** or **[12 HOUR]** hour format is displayed.
- 2 Press **◀◀ / ▶▶** to select **[24 HOUR]** or **[12 HOUR]** hour format.
- 3 press **CLOCK** to confirm.  
↳ The hour digits are displayed and begin to blink.
- 4 Press **◀◀ / ▶▶** to select hour and press **CLOCK** to confirm.  
↳ The minute digits are displayed and begin to blink.
- 5 Press **◀◀ / ▶▶** to select minute and press **CLOCK** to confirm.  
↳ **[SYNC ON]** is displayed on the LCD screen.
- 6 Press **◀◀ / ▶▶** to select whether to synchronize the system clock with an RDS radio station that transmits time signals, and then press **CLOCK** to confirm.

### ≡ Note

- If no button is pressed in 90 seconds, the system exits clock setting mode automatically.

### ✦ Tip

- You can view clock information in power-on mode by pressing **CLOCK**.

## Turn on

Press **⊕**.

- ↳ The unit switches to the last selected source.

---

## Switch to standby mode

Press  $\phi$  again to switch the unit to standby mode.

- ↳ The clock (if set) is displayed on the panel.

### Switch to ECO standby mode:

Press and hold  $\phi$  for more than two seconds.

- ↳ The display panel is dimmed.



#### Note

- The unit switches to Eco Power Standby mode after 15 minutes in standby mode.

### Switch between standby mode and ECO standby mode:

Press and hold  $\phi$  for more than two seconds.



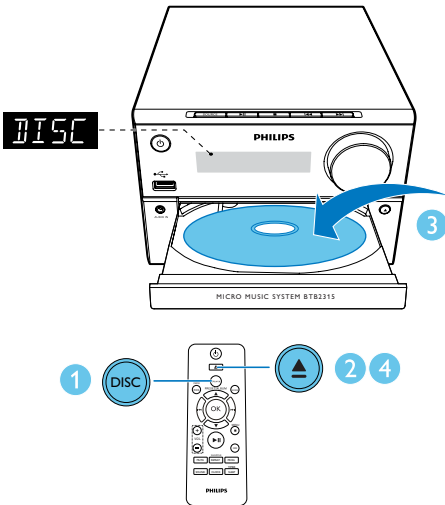
#### Note

- The product automatically goes to charging mode when a smart phone is connected through USB socket in ECO standby mode.

# 4 Play

## Play from disc


- 1 Press **SOURCE** repeatedly to select the **DISC** source.
- 2 Press **▲** to open the disc compartment.
- 3 Insert a disc with printed side facing upward.
- 4 Press **▲** to close the disc compartment.  
↳ Play starts automatically. If not, press **▶||**.

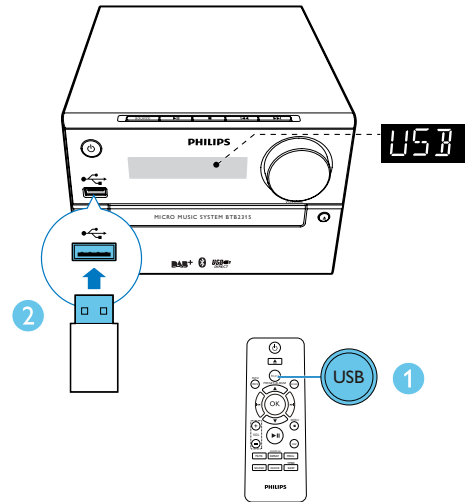


## Play from USB

### Note

- Make sure that the USB device contains playable audio content.

- 1 Press **SOURCE** repeatedly to select the **USB** source.
- 2 Insert a USB device into the  socket.  
↳ Play starts automatically. If not, press **▶||**.

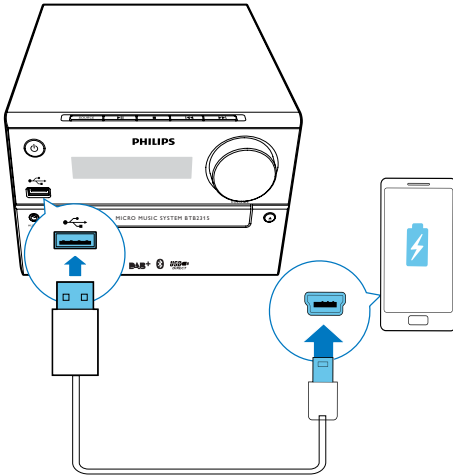


## Charge your device

You can charge your device through the USB socket on this product with a USB cable (not supplied).

### Note

- The maximum current for USB charging is 500 mA.
- Not all devices for USB charging are guaranteed.



## Program tracks

You can program a maximum of 20 tracks.

- 1 Press **PROG** to activate the program mode.
- 2 For MP3 tracks, press **▲** / **▼** to select an album.
- 3 Press **◀◀** / **▶▶** to select a track, and then press **PROG** to confirm.
- 4 Repeat steps 2-3 to program more tracks.
- 5 Press **▶▶** to play the programmed tracks.
  - ↳ During play, **[PROG]** (program) is displayed.
    - To erase the program, in the stop position, press **■**.

## Control play

<b>▲</b> / <b>▼</b>	Select a folder.
<b>◀◀</b> / <b>▶▶</b>	Select an audio file.
<b>▶▶</b> / <b>◀◀</b>	Pause or resume play.
<b>■</b>	Stop play.
<b>REPEAT</b>	Play a track or all tracks repeatedly.
<b>SHUFFLE</b>	Play tracks randomly.
<b>VOL +/-</b>	Increase or decrease the volume.
<b>MUTE</b>	Mute or restore sound.
<b>SOUND</b>	Enrich sound effect with DSC: balance, warm, and bright, powerful and clear.

## Play from Bluetooth-enabled devices

### Note

- The effective operation range between the unit and your Bluetooth enabled device is approximately 10 meters (30 feet).
- Any obstacle between the system and the device can reduce the operational range.
- Compatibility with all Bluetooth devices is not guaranteed.

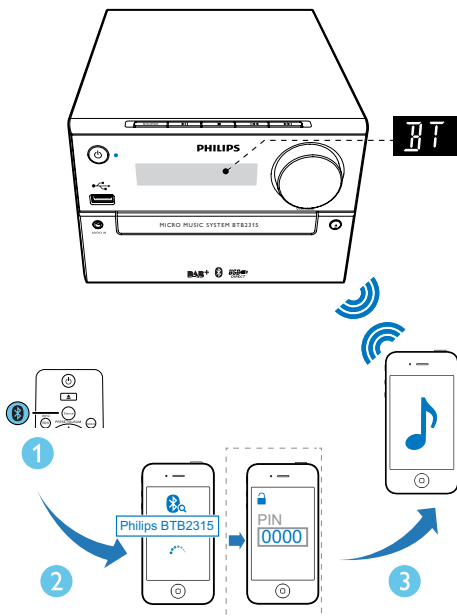
## Skip to a track

For CD:

Press **◀◀** / **▶▶** to select another track.

For MP3 disc and USB:

- 1 Press **▲** / **▼** to select an album or a folder.
- 2 Press **◀◀** / **▶▶** to select a track or a file.



#### To disconnect the Bluetooth-enabled device:

- Deactivate Bluetooth on your device; or
- Move the device beyond the communication range; or
- Press and hold **▶||** for 3 seconds.
  - ↳ The current Bluetooth connection is disconnected.

#### To clear Bluetooth pairing history:

- Press and hold **■** for 8 seconds.
  - ↳ The current Bluetooth is cleared.

- 1 Press **SOURCE** repeatedly to select the **Bluetooth** source.
  - ↳ **[BT]** (Bluetooth) is displayed.
  - ↳ The Bluetooth indicator flashes blue.
- 2 On your device that supports Advanced Audio Distribution Profile (A2DP), enable Bluetooth and search for Bluetooth devices that can be paired (refer to the user manual of the device).
- 3 Select '**Philips BTB2315**' on your Bluetooth enabled device and if necessary input '0000' as the pairing password.
  - ↳ After successful pairing and connection, the Bluetooth indicator turns solid blue, and the unit beeps.
- 4 Play audio on the connected device.
  - ↳ Audio streams from your Bluetooth enabled device to this unit.

#### Tip

- The unit can memorize up to 4 previously connected Bluetooth devices.

# 5 Listen to the radio

## Tip

- Position the antenna as far as possible from TV, VCR, or other radiation source.
- Make sure that you have connected the supplied aerial.
- For optimal reception, fully extended and adjust the position of the aerial.

## Listen to DAB+ radio

Digital Audio Broadcasting (DAB+) is a way of broadcasting radio digitally through a network of transmitters. It provides you with more choice, better sound quality, and more information.

## Tune to DAB+ radio stations

### Note

- Make sure that the antenna is fully extended.

Press **SOURCE** repeatedly to select **DAB** source.

- ↳ **[FULL SCAN]** (full scan) is displayed.
- ↳ The unit stores all DAB+ radio stations automatically and broadcasts the first available station.
- ↳ The station list is memorized in the unit. Next time when you turn on the unit, the station scan does not take place.

### Note

- If no DAB+ radio station is found, **[NO DAB]** (no DAB) is displayed, then **[FULL SCAN]** (full scan) is displayed again.

To tune to a station from the available station list:

In DAB+ mode, press **◀◀** / **▶▶** repeatedly to navigate through the available DAB+ stations.

## Store DAB+ radio stations automatically

### Note

- New stations and services will be added in DAB+ broadcast from time to time. To make new DAB+ stations and services available, perform full scan regularly.

In DAB+ mode, press **SCAN**.

- ↳ The unit scans and stores all the available DAB+ radio stations, and broadcasts the first available station.

## Store DAB+ radio stations manually

### Note

- You can store a maximum of 20 preset DAB+ radio stations.

- 1 Tune to a DAB+ radio station.
- 2 Press **PROG** for three seconds to activate the storing mode.
- 3 Press **▲** / **▼** to select a channel.
- 4 Press **PROG** to confirm.
  - ↳ The name of the preset station is displayed.
- 5 Repeat above steps to store more DAB+ stations.

### Note

- To remove a pre-stored DAB+ radio station, store another station in its place.

---

## Select a preset DAB+ radio station

In DAB+ mode, press ▲ / ▼ to select a preset number, and then press **OK** to confirm..

---

## Show DAB+ information

While listening to DAB+ radio, press **INFO/RDS** repeatedly to scroll through the following information (if available):

- Station Name
- RDSTEXT message
- Dynamic Label Segment
- Program Type
- Ensemble Name
- Frequency
- Signal error rate
- Bit rate
- Audio status (DAB, DAB+)
- Time
- Date

---

## Use DAB+ menu

In DAB+ mode, press **MENU** to access DAB+ menu.

- 1 Press **◀◀ / ▶▶** to scroll the menu options:
  - **[FULL SCAN]** (full scan): scan and store all the available DAB+ radio stations.
  - **[MANUAL]** (manual): tune to a DAB+ station manually.
  - **[PRUNE]** (prune): remove all the invalid stations from the station list.
  - **[SYSTEM]** (system): adjust system settings.

- 2 To select an option, press **OK**.

- 3 If a sub-option is available, repeat steps 2- 3.

**[System]** (system)

- **[RESET]** (reset): reset all settings to factory default.
- **[BT RESET]** (Bluetooth reset): reset Bluetooth settings to factory default.
- **[UPGRADE]** (upgrade): upgrade software if available.

- **[BT UPGRADE]** (Bluetooth upgrade): upgrade Bluetooth software if available.
- **[SWVER]** (software version): show the software version of this unit.
- **[AUD DRC]** (auto dynamic range control): add or remove a degree of compensation for the differences in the dynamic range between radio stations. There are four options: **[NONE]**, **[HALF]**, **[FULL]**, and **[TWICE]**.

---

### Note

- If no button is pressed within 30 seconds, the menu exits.

---

## Listen to FM radio

---

### Tune to a radio station

- 1 Press **SOURCE** repeatedly to select FM source.
- 2 Press and hold **◀◀ / ▶▶** for three seconds.
  - ↳ The radio tunes to a station with strong reception automatically.
- 3 Repeat step 2 to tune to more stations.

**To tune to a weak station:**

Press **◀◀ / ▶▶** repeatedly until you find optimal reception.

---

### Store FM radio stations automatically

---

#### Note

- You can program a maximum of 20 preset radio stations (FM).

- 1 In FM mode, press **MENU** to access FM menu.
  - ↳ **[SEARCH LEVEL]** (search level) is displayed.



- 2 Press **OK**, and then press **◀◀** / **▶▶** to scroll the menu options:
  - **[Strong]** (strong stations): scan stations with strong signals only.
  - **[All]** (all stations): scan all available FM radio stations.
- 3 Press **OK** to select an option.
- 4 In FM mode, press **SCAN**.
  - ↳ The stations scanned are based on the selection in step 2.
  - ↳ The unit broadcasts the first scanned FM radio stations.

---

## Store FM radio stations manually

- 1 Tune to an FM radio station.
- 2 Press **PROG** to activate programming mode.
  - ↳ **[PROG]** (program) blinks.
- 3 Press **▲** / **▼** repeatedly to select a number.
- 4 Press **PROG** again to confirm.
  - ↳ The frequency of the preset station is displayed.
- 5 Repeat above steps to store more FM stations.



### Note

- To remove a pre-stored station, store another station in its place.

---

## Show RDS information

Radio Data System (RDS) is a service that allows FM stations to show additional information.

- 1 Tune to an RDS station.
- 2 Press **RDS/INFO** repeatedly to scroll through the following information (if available).
  - Radio text message
  - Program type
  - Frequency
  - Stereo or Mono

---

## Select a preset radio station

In FM mode, press **▲** / **▼** to select a preset radio station.

## 6 Other features

### Set the alarm timer

This unit can be used as an alarm clock. You can select **DISC**, **FM**, **DAB**, or **USB** as alarm source.

#### Note

- Make sure that you have set the clock correctly.

- 1 In standby mode, press and hold **SLEEP/TIMER** for three seconds.  
↳ **[TIMER]** is displayed, and then **[DISC]** is displayed and begins to blink.
- 2 Press **◀◀ / ▶▶** (or **SOURCE**) repeatedly to select an alarm source (**DISC**, **USB**, **DAB**, **FM**).
- 3 Press **SLEEP/TIMER** (or **OK**) to confirm.  
↳ The hour digits are displayed and begin to blink.
- 4 Repeat steps 2-3 to set hour, minute, and adjust volume of the alarm.

#### Note

- If no button is pressed in 90 seconds, the system exits timer setting mode automatically.

#### To activate or deactivate the alarm timer:

Press **SLEEP/TIMER** repeatedly to view the alarm information and activate or deactivate the alarm.

- ↳ If timer is activated, **[TIMER]** is displayed.
- ↳ If timer is deactivated, **[TIMER]** (timer) disappears.

#### Tip

- If **DISC/USB** source is selected, but no disc is placed or no **USB** connected, the system switches to **FM** source automatically.

### Set the sleep timer

To set the sleep timer, in turn on mode, press **SLEEP/TIMER** repeatedly to select a set period of time (in minutes).

- ↳ When sleep timer is activated, **[SLEEP]** is displayed. Otherwise, **[SLEEP]** disappears.

### Adjust the display brightness

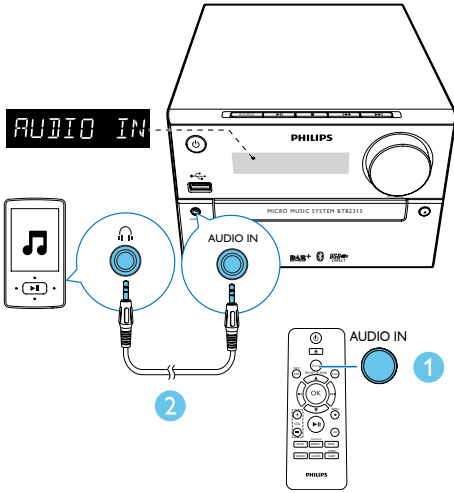
Press **DIM** repeatedly to adjust the display brightness:

- **[DIM 1]**
- **[DIM 2]**
- **[DIM OFF]**

### Listen to an external device

You can listen to an external device through this unit with an audio cable.

- 1 Press **SOURCE** repeatedly to select **AUDIO IN** source.
- 2 Connect an audio cable (not supplied) between:
  - **AUDIO IN** jack (3.5 mm) on the unit;
  - and the headphone jack on an external device.
- 3 Start to play the device (see the device user manual).



# 7 Product information

## Note

- Product information is subject to change without prior notice.

## Specifications

### Amplifier

Maximum Output Power	20 W
Frequency Response	60 Hz - 20 kHz; $\pm 3$ dB
Signal to Noise Ratio	>70 dBA
Total Harmonic Distortion	<1%
Aux Input	600 mV RMS 22 kohm

### Speakers

Speaker Impedance	6 ohm
Speaker Driver	Full range 3"
Sensitivity	>85 dB/m/W

### Disc

Laser Type	Semiconductor
Disc Diameter	12 cm/8 cm
Support Disc	CD-DA, CD-R, CD-RW, MP3-CD
Audio DAC	24 Bits/44.1 kHz
Total Harmonic Distortion	<1% (1 kHz)
Frequency Response	60 Hz - 16 kHz; $\pm 3$ dB
S/N Ratio	>70 dBA

### USB

USB Direct Version	1.0 (2.0 compatible)
USB Charging	$\leq 500$ mA

### Bluetooth

Bluetooth version	V4.0
Frequency band	2.4 GHz ~ 2.48 GHz ISM Band
Range	10 m (free space)

### Tuner (FM)

Tuning Range	87.5-108 MHz
Tuning grid	50 KHz
Sensitivity	- Mono, 26 dB S/N Ratio <22 dBf - Stereo, 46 dB S/N Ratio <45 dBf
Search Selectivity	<30 dBf
Total Harmonic Distortion	<3%
Signal to Noise Ratio	>45 dBA

### General information

AC power	220-240V~, 50 Hz
Operation Power Consumption	15 W
Eco Standby Power Consumption	<0.5 W
Dimensions	- Main Unit (W x H x D) 180 x 121 x 247 mm - Speaker Box (W x H x D) 150 x 238 x 125 mm
Weight	- Main Unit 1.6 kg - Speaker Box 2 x 0.98 kg

---

## USB playability information

### Compatible USB devices:

- USB flash memory (USB2.0 or USB1.1)
- USB flash players (USB2.0 or USB1.1)
- memory cards (requires an additional card reader to work with this unit)

### Supported USB formats:

- USB or memory file format: FAT12, FAT16, FAT32 (sector size: 512 bytes)
- MP3 bit rate (data rate): 32-320 Kbps and variable bit rate
- Directory nesting up to a maximum of 8 levels
- Number of albums/ folders: maximum 99
- Number of tracks/titles: maximum 999
- File name in Unicode UTF8 (maximum length: 32 bytes)

### Unsupported USB formats:

- Empty albums: an empty album is an album that does not contain MP3 files, and will not be shown in the display.
- Unsupported file formats are skipped. For example, word documents (.doc) or MP3 files with extension .dlf are ignored and not played.
- WMA, AAC, WAV, PCM audio files
- DRM protected WMA files (.wav, .m4a, .m4p, .mp4, .aac)
- WMA files in Lossless format

---

## Supported MP3 disc formats

- ISO9660, Joliet
- Maximum title number: 128 (depending on file name length)
- Maximum album number: 99
- Supported sampling frequencies: 32 kHz, 44.1 kHz, 48 kHz
- Supported Bit-rates: 32~256 (kbps), variable bit rates

---

## RDS program types

NO TYPE	No RDS programme type
NEWS	News services
AFFAIRS	Politics and current affairs
INFO	Special information programs
SPORT	Sports
EDUCATE	Education and advanced training
DRAMA	Radio plays and literature
CULTURE	Culture, religion and society
SCIENCE	Science
VARIED	Entertainment programs
POP M	Pop music
ROCK M	Rock music
MOR M	Light music
LIGHT M	Light classical music
CLASSICS	Classical music
OTHER M	Special music programs
WEATHER	Weather
FINANCE	Finance
CHILDREN	Children's programs
SOCIAL	Social Affairs
RELIGION	Religion
PHONE IN	Phone In
TRAVEL	Travel
LEISURE	Leisure
JAZZ	Jazz Music
COUNTRY	Country Music
NATION M	National Music
OLDIES	Oldies Music
FOLK M	Folk Music
DOCUMENT	Documentary
TES	Alarm Test
ALARM	Alarm

# 8 Troubleshooting



## Warning

- Never remove the casing of this device.

To keep the warranty valid, never try to repair the system yourself.

If you encounter problems when using this device, check the following points before requesting service. If the problem remains unsolved, go to the Philips Web page ([www.philips.com/support](http://www.philips.com/support)). When you contact Philips, make sure that the device is nearby and the model number and serial number are available.

### No power

- Make sure that the AC power cord of the device is connected properly.
- Make sure that there is power at the AC outlet.
- As a power-saving feature, the system switches off automatically 15 minutes after track play reaches the end and no control is operated.

### No sound or poor sound

- Adjust the volume.
- Check that the speakers are connected correctly.
- Check if the stripped speaker wires are clamped.

### No response from the unit

- Disconnect and reconnect the AC power plug, then turn on the unit again.

### Remote control does not work

- Before you press any function button, first select the correct source with the remote control instead of the main unit.
- Reduce the distance between the remote control and the unit.
- Insert the battery with its polarities (+/- signs) aligned as indicated.
- Replace the battery.
- Aim the remote control directly at the sensor on the front of the unit.

### No disc detected

- Insert a disc.
- Make sure that the disc is inserted with printed side facing upward.
- Wait until the moisture condensation at the lens has cleared.
- Replace or clean the disc.
- Use a finalized CD or correct format disc.

### Cannot display some files in USB device

- The number of folders or files in the USB device has exceeded a certain limit. This phenomenon is not a malfunction.
- The formats of these files are not supported.

### USB device not supported

- The USB device is incompatible with the unit. Try another one.

### Poor radio reception

- Increase the distance between the unit and your TV or VCR.
- Connect and fully extend supplied antenna.

### Music playback is unavailable on this unit even after successful Bluetooth connection.

- The device cannot be used to play music through this unit wirelessly.

### The audio quality is poor after connection with a Bluetooth-enabled device.

- The Bluetooth reception is poor. Move the device closer to this unit or remove any obstacle between them.

### Bluetooth cannot be connected with this unit.

- The device does not support the profiles required for this unit.
- The Bluetooth function of the device is not enabled. Refer to the user manual of the device to find out how to enable the function.
- This unit is not in pairing mode.
- This unit is already connected with another Bluetooth-enabled device. Disconnect that device and then try again.
- If you pair and connect through NFC, make sure that:

- you have enabled both the Bluetooth and NFC features on your device.
- you have kept the NFC area of the device in touch with that of the speaker until you heard a beep.

**The paired mobile device connects and disconnects constantly.**

- The Bluetooth reception is poor. Move the device closer to this unit or remove any obstacle between them.
- Some mobile phones may connect and disconnect constantly when you make or end calls. This does not indicate any malfunction of this unit.
- For some devices, the Bluetooth connection may be deactivated automatically as a power-saving feature. This does not indicate any malfunction of this unit.

**Timer does not work**

- Set the clock correctly.
- Switch on the timer.

**Clock/timer setting erased**

- Power has been interrupted or the power cord has been disconnected.
- Reset the clock/timer.

## 9 Notice

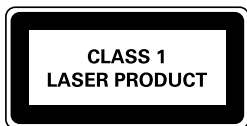
Any changes or modifications made to this device that are not expressly approved by WOOX Innovations may void the user's authority to operate the equipment.

### Compliance

# CE 0890

Hereby, WOOX Innovations declares that this product is in compliance with the essential requirements and other relevant provisions of Directive 1999/5/EC. You can find the Declaration of Conformity on [www.philips.com/support](http://www.philips.com/support).

**This apparatus includes this label:**



### Care for your product

- Do not insert any objects other than discs into the disc compartment.
- Do not insert warped or cracked discs into the disc compartment.
- Remove the discs from the disc compartment if you are not using the product for an extended period of time.
- Only use microfiber cloth to clean the product.

### Care for your environment

#### Disposal of your old product and battery



Your product is designed and manufactured with high quality materials and components, which can be recycled and reused.



This symbol on a product means that the product is covered by European Directive 2012/19/EU.



This symbol means that the product contains batteries covered by European Directive 2013/56/EU which cannot be disposed of with normal household waste.

Inform yourself about the local separate collection system for electrical and electronic products and batteries. Follow local rules and never dispose of the product and batteries with normal household waste. Correct disposal of old products and batteries helps prevent negative consequences for the environment and human health.

#### Removing the disposable batteries

To remove the disposable batteries, see battery installation section.

#### Environmental information

All unnecessary packaging has been omitted. We have tried to make the packaging easy to separate into three materials: cardboard (box), polystyrene foam (buffer) and polyethylene (bags, protective foam sheet.)

Your system consists of materials which can be recycled and reused if disassembled by a specialized company. Please observe the local regulations regarding the disposal of packaging materials, exhausted batteries and old equipment.



---

## Trademark notice



**Be responsible**  
**Respect copyrights**

This item incorporates copy protection technology that is protected by U.S. patents and other intellectual property rights of Rovi Corporation. Reverse engineering and disassembly are prohibited.

### **Bluetooth**

The Bluetooth® word mark and logos are registered trademarks owned by Bluetooth SIG, Inc. and any use of such marks by WOOX Innovations is under license.



#### Note

- The type plate is located on the back of the device.

---

## Copyright

2014 © WOOX Innovations Limited. All rights reserved.

Specifications are subject to change without notice. WOOX reserves the right to change products at any time without being obliged to adjust earlier supplies accordingly.



Specifications are subject to change without notice.

2014 © WOOX Innovations Limited.

All rights reserved.

Philips and the Philips' Shield Emblem are registered trademarks of Koninklijke Philips N.V. and are used by WOOX Innovations Limited under license from Koninklijke Philips N.V.

BTB2315\_12\_UM\_V1.0

