

Always there to help you

Register your product and get support at
www.philips.com/welcome



BTB2090



User manual

PHILIPS

Contents

1	Important	2
----------	------------------	----------

2	Notice	3
----------	---------------	----------

3	Your Micro System	5
	Introduction	5
	What's in the box	5
	Overview of the main unit	6
	Overview of the remote control	7

4	Get started	9
	Placement	9
	Prepare FM/DAB+ antenna	9
	Prepare the remote control	9
	Connect power	9
	Set clock	9
	Turn on	10

5	Play	11
	Play disc	11
	Play from a USB storage device	11
	Play from Bluetooth-enabled devices	11
	Control play (CD/USB mode)	12
	Program tracks	13
	Adjust sound	13
	Display different information	13

6	Listen to DAB+ radio	14
	For first-time use	14
	Store DAB+ radio stations automatically	14
	Store DAB+ radio stations manually	14
	Listen to a preset DAB+ radio station	14
	Use DAB+ menu	15
	Show DAB+ information	15

7	Listen to FM radio	16
	Tune to FM radio stations	16
	Program FM radio stations automatically	16
	Program FM radio stations manually	16
	Select a preset radio station	16
	Show RDS information	16
	Select stereo/mono broadcast	17
	Use FM menu	17

8	Other features	18
	Use system menu	18
	Set the alarm timer	19
	Set the sleep timer	19
	Play from an external audio device	19
	Listen through the headphone	20

9	Product information	21
	Specifications	21
	USB playability information	22
	Supported MP3 disc formats	22

10	Troubleshooting	23
-----------	------------------------	-----------

1 Important



Warning

- Never remove the casing of this micro system.
 - Never lubricate any part of this system.
 - Never place this system on other electrical equipment.
 - Never look into the laser beam inside this system.
 - Keep this system away from direct sunlight, naked flames or heat.
 - Make sure that you always have easy access to the power cord, plug or adaptor to disconnect the system from the power.
-
- Batteries (battery pack or batteries installed) shall not be exposed to excessive heat such as sunshine, fire or the like.
 - Battery usage CAUTION – To prevent battery leakage which may result in bodily injury, property damage, or damage to the remote control:
 - Install all batteries correctly, + and - as marked on the remote control.
 - Do not mix batteries (old and new or carbon and alkaline, etc.).
 - Remove batteries when the remote control is not used for a long time.
 - Make sure that there is enough free space around the product for ventilation.
 - Use only power supplies listed in the user manual.
 - The system shall not be exposed to dripping or splashing.
 - Do not place any sources of danger on the system (e.g. liquid filled objects, lighted candles).
 - Where the plug of the Direct Plug-in Adapter is used as the disconnect device, the disconnect device shall remain readily operable.

Caution

- To prevent possible hearing damage, do not listen at high volume levels for long periods. Set the volume to a safe level. The louder the volume, the shorter is the safe listening time.

Be sure to observe the following guidelines when using your headphones.

- Listen at reasonable volumes for reasonable periods of time.
- Be careful not to adjust the volume continuously upwards as your hearing adapts.
- Do not turn up the volume so high that you can't hear what's around you.
- You should use caution or temporarily discontinue use in potentially hazardous situations.
- Excessive sound pressure from earphones and headphones can cause hearing loss.

Hearing safety

2 Notice

Any changes or modifications made to this device that are not expressly approved by WOOX Innovations may void the user's authority to operate the equipment.

CE 0890

Any changes or modifications made to this device that are not expressly approved by WOOX Innovations may void the user's authority to operate the equipment. Hereby, WOOX Innovation declares that this product is compliance with the essential requirements and other relevant provisions of Directive 1999/5/EC. You can find the Declaration of Conformity on www.philips.com/support.

Disposal of your old product and battery



Your product is designed and manufactured with high quality materials and components, which can be recycled and reused.



This symbol on a product means that the product is covered by European Directive 2013/56/EU.



This symbol means that the product contains batteries covered by European Directive 2006/66/EC which cannot be disposed of with normal household waste.

Inform yourself about the local separate collection system for electrical and electronic products and batteries. Follow local rules and never dispose of the product and batteries

with normal household waste. Correct disposal of old products and batteries helps prevent negative consequences for the environment and human health.

Removing the disposable batteries

To remove the disposable batteries, see battery installation section.

Environmental information

All unnecessary packaging has been omitted. We have tried to make the packaging easy to separate into three materials: cardboard (box), polystyrene foam (buffer) and polyethylene (bags, protective foam sheet.) Your system consists of materials which can be recycled and reused if disassembled by a specialized company. Please observe the local regulations regarding the disposal of packaging materials, exhausted batteries and old equipment.

This apparatus includes this label:



This is CLASS II apparatus with double insulation, and no protective earth provided.

Bluetooth

The Bluetooth® word mark and logos are registered trademarks owned by Bluetooth SIG, Inc. and any use of such marks by WOOX Innovations is under license.



The making of unauthorized copies of copy-protected material, including computer programs, files, broadcasts and sound recordings, may be an infringement of copyrights and constitute a criminal offence. This equipment should not be used for such purposes.



Note

- The type plate is located on the back of the apparatus.

3 Your Micro System

Congratulations on your purchase, and welcome to Philips! To fully benefit from the support that Philips offers, register your product at www.philips.com/welcome.

Introduction

With this micro system, you can:

- enjoy audio from discs, USB devices, and other external devices
- listen to FM/DAB+ radio

You can enrich sound output with these sound effects:

- [POWERFUL] (Powerful)
- [BALANCED] (Balanced)
- [WARM] (Warm)
- [BRIGHT] (Bright)
- [CLEAR] (Clear)

What's in the box

Check and identify the contents of your package:

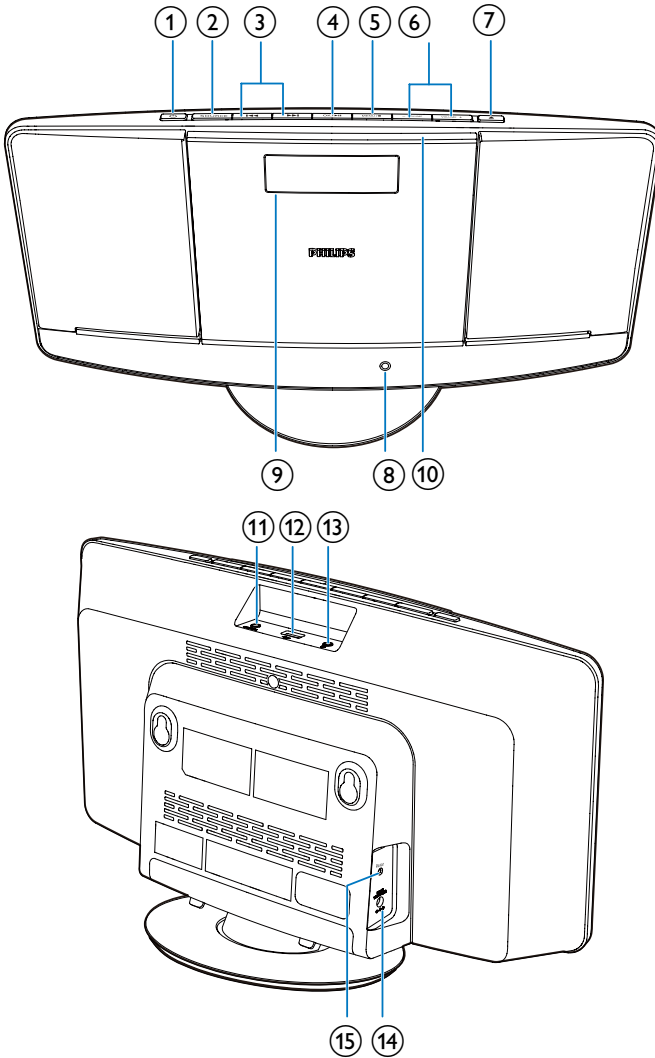
- Main unit
- Remote control (with battery)
- Power adapter
- Mounting kit (2 dowels and 2 screws)
- Short user manual
- Safety & notice leaflet
- Wall mounting instructions

If you contact Philips, you will be asked for the model and serial number of this apparatus. The model number and serial number are on the bottom of the apparatus. Write the numbers here:

Model No. _____

Serial No. _____

Overview of the main unit



① 

- Turn the system on.
- Switch to standby mode.

② **SOURCE**

- Select a source: CD, USB, FM, DAB+, FM, BLUETOOTH, or MP3 LINK.

③ 

- Skip to the previous or next track.
- Search within a track or disc.
- Tune to radio stations.
- Adjust time.

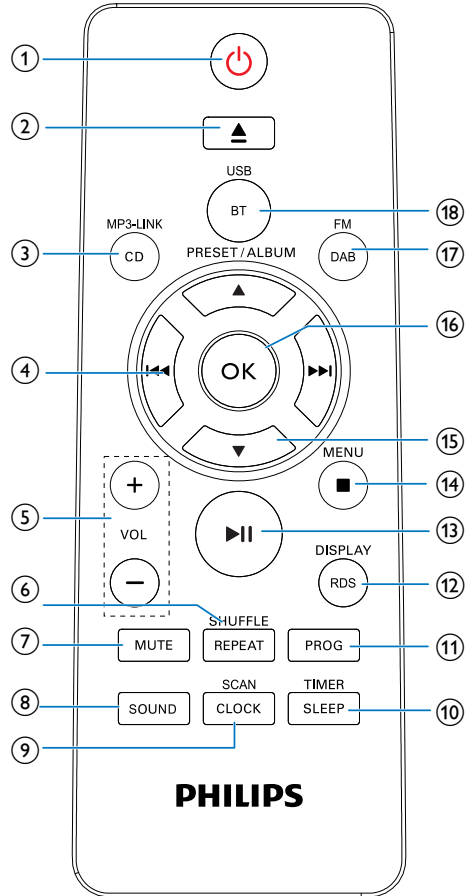
④ **OK/ **

- Start or pause play.

- Confirm a selection.
- Switch between mono and stereo broadcast.

- ⑤ **MENU/■**
- Access FM/DAB+ menu.
 - Stop play or erase a program.
- ⑥ **VOLUME + / -**
- Adjust volume.
- ⑦ **▲**
- Open or close the disc compartment.
- ⑧ **Power indicator**
- Light up when the micro system in in ECO standby mode.
- ⑨ **Display panel**
- Show play information.
- ⑩ **Disc compartment**
- ⑪ **MP3-LINK**
- Connect an external audio device.
- ⑫ **↔**
- Connect a USB storage device.
- ⑬ **🎧**
- Headphone socket.
- ⑭ **DC IN**
- Connect power.
- ⑮ **FM ANT**
- Improve FM/DAB+ radio reception.

Overview of the remote control



- ① **⏻**
- Turn the micro system on.
 - Switch the system to standby mode.
- ② **▲**
- Open or close the disc compartment.
- ③ **CD/MP3-LINK**
- Select CD or MP3 link source.
- ④ **⏮ / ⏭**
- Skip to the previous or next track.
 - Search within a track or disc.

- Tune to radio stations.
 - Adjust time.
- ⑤ **VOL +/-**
- Adjust volume.
- ⑥ **REPEAT/SHUFFLE**
- Play a track or all tracks repeatedly.
 - Play tracks in current album repeatedly.
 - Play tracks randomly.
- ⑦ **MUTE**
- Mute or resume sound.
- ⑧ **SOUND**
- Select a preset sound setting.
- ⑨ **CLOCK/SCAN**
- Set time.
 - Scan/store DAB+ radio stations automatically.
- ⑩ **SLEEP/TIMER**
- Set sleep or alarm timer.
- ⑪ **PROG**
- Program tracks.
 - Program radio stations.
- ⑫ **RDS/DISPLAY**
- Show time and play information.
 - For FM radio stations with RDS signals: display RDS information.
- ⑬ **▶ ||**
- Start or pause play.
- ⑭ **MENU/ ■**
- Stop play or erase a program.
 - Access FM/DAB+ menu.
- ⑮ **▲ / ▼**
- Select a preset radio station.
 - Skip to the previous or next album.
- ⑯ **OK**
- Confirm a selection.
- ⑰ **DAB/FM**
- Select FM source.
 - Select DAB source.
- ⑱ **BT/USB**
- Select Bluetooth source.
 - Select USB source.

4 Get started



Caution

- Use of controls or adjustments or performance of procedures other than herein may result in hazardous radiation exposure or other unsafe operation.

Always follow the instructions in this chapter in sequence.

Placement

You can place the system on a flat surface or mount it on a wall.

Mount on a wall

See the wall mounting instructions included in the package.

Prepare FM/DAB+ antenna

For better reception, fully extend and adjust the position of the FM/DAB+ antenna.

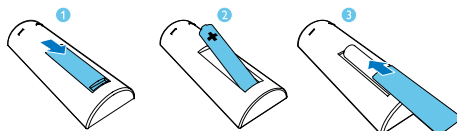


Note

- To prevent interference, position the antenna as far as possible from TV/VCR, or other radiation source.

Prepare the remote control

- 1 Open the battery compartment.
- 2 Insert 1 AAA batteries with correct polarity (+/-) as indicated.
- 3 Close the battery compartment.



Connect power



Caution

- Risk of product damage! Make sure that the power supply voltage corresponds to the voltage printed on the back of the system.
- Risk of electric shock! When you unplug the AC power adapter, always pull the plug from the socket. Never pull the cord.
- Before connecting the AC adapter, make sure that you have completed all other connections.

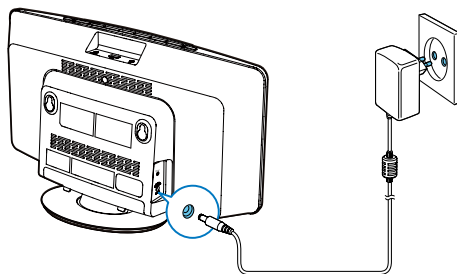


Note

- The type plate is located on the back of the system.

Connect the power adapter to:

- the **DC IN** socket on the system.
- the wall outlet.



Set clock

- 1 Press **⏻** to switch the system to standby mode.
↳ --:-- is displayed.
- 2 Press and hold **CLOCK/SCAN** on the remote control for two seconds.

↳ **[SET CLOCK]** (set clock) scrolls on the display, and then 12 or 24 hour format blinks.

3 Press **◀◀ / ▶▶** repeatedly to select the hour format.

4 Press **CLOCK/SCAN** to confirm.

5 Repeat steps 3-4 to set the hour and minute respectively.

Note

- If the system is idle for 10 seconds, it exits clock setting mode automatically.

Switch between standby mode and Eco Power mode:

- In standby/Eco Power mode, press and hold **⏻** to switch the micro system to Eco Power/standby mode.

Tip

- The power indicator lights up red when the micro system is in Eco Power mode.

Turn on

Press **⏻**.

↳ The system switches to the last selected source.

Tip

- To select another source, press **SOURCE** repeatedly or the source selection buttons on the remote control.

Switch to standby mode

Press **⏻** to switch the micro system to standby mode.

↳ The clock (if set) appears on the display panel.

Switch to ECO Power mode:

- Press and hold **⏻** for more than three seconds.

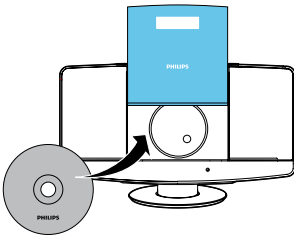
Tip

- The micro system switches to Eco Power mode after 15 minutes in standby mode.
- Press and hold **⏻** to switch the micro system to ECO standby mode if it is in working mode.
- Press **⏻** to wake up the micro system from ECO standby mode.

5 Play

Play disc

- 1 Press **CD/MP3-LINK** repeatedly to select CD source.
- 2 Press **▲** to open the disc compartment.



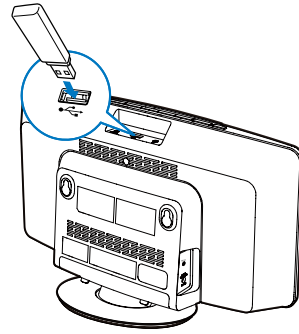
- 3 Insert a disc with the printed side facing up.
- 4 Press **▲** to close the disc compartment.
↳ Playback starts automatically after a few seconds. If not, press **▶||**.

Play from a USB storage device

Note

- Make sure that the USB device contains playable audio content.

- 1 Insert the USB storage device into the  socket.

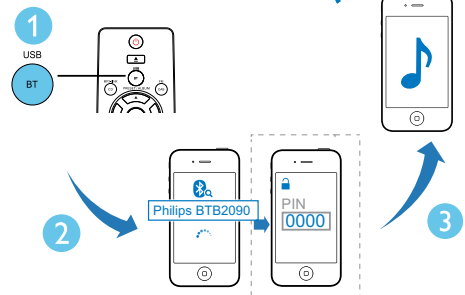
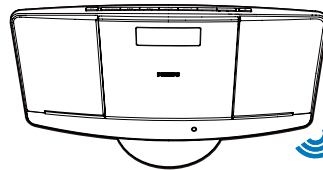


- 2 Press **BT/USB** repeatedly to select the USB source.
↳ Play starts automatically. If not, press **▶||**.

Play from Bluetooth-enabled devices

Note

- The effective operation range between the unit and your Bluetooth enabled device is approximately 10 meters (30 feet).
- Any obstacle between the system and the device can reduce the operational range.
- Compatibility with all Bluetooth devices is not guaranteed.



- 1 Press **SOURCE** repeatedly to select the **Bluetooth** source.
↳ **[BLUETOOTH]** (BLUETOOTH) is displayed.
- 2 On your device, enable Bluetooth and search for Bluetooth devices that can be paired (refer to the user manual of the device).
- 3 Select '**Philips BTB2090**' on your Bluetooth enabled device and if necessary input '0000' as the pairing password.
↳ After successful pairing and connection, **[BT CONNECTED]** (BT connected) is displayed and the speaker beeps twice.
- 4 Play audio on the connected device.
↳ Audio streams from your Bluetooth enabled device to this unit.



Tip

- The micro music system can memorize up to 8 previously connected Bluetooth devices.

To disconnect the Bluetooth-enabled device:

- Deactivate Bluetooth on your device; or
- Move the device beyond the communication range.
- Press and hold **▶||** for 2 seconds.

To clear Bluetooth pairing history:

- Press and hold **■** on the main set for 7 seconds.
↳ The current Bluetooth connection is disconnected.
- ↳ After successful clearing, beep sounds

Control play (CD/USB mode)

◀◀ / ▶▶	Select an audio file; Press and hold to fast forward or fast reverse the track during playback, then release to resume play.
▲ / ▼	For MP3/WMA tracks, select an album or folder.
▶ 	Start or pause play.
■	Stop play.
OK	Confirm a selection.
REPEAT/SHUFFLE	[ONE] : Play the current track repeatedly. [ALB] : (for MP3/WMA only): Play all tracks in this album repeatedly. [ALL] : Play all tracks repeatedly. [SHUF] : Play all tracks randomly. Press and hold REPEAT/SHUFFLE to access shuffle play mode. To return to normal play, press REPEAT/SHUFFLE repeatedly until the repeat or shuffle icon disappears.

Program tracks

You can program a maximum of 20 tracks.

- 1 In CD or USB mode, press **■** to stop playback.
- 2 Press **PROG** to activate the programming mode.
- 3 For MP3/WMA tracks, press **▲** / **▼** repeatedly to select an album.
- 4 Press **◀◀** / **▶▶** repeatedly to select a track, then press **PROG** to confirm.
- 5 Repeat steps 3-4 to program more tracks.
- 6 To play the programmed tracks, press **▶||**.
 - ↳ During play, **[PROG]** (program) is displayed.
 - To erase the program, press **■** twice.

Adjust sound

During play, you can adjust volume and select different sound effects.

Key	Function
VOL +/-	Increase or decrease volume.
MUTE	Mute or resume sound.
SOUND	Press to select a sound effect: [POWERFUL] (Powerful) [BALANCED] (Balanced) [WARM] (Warm) [BRIGHT] (Bright) [CLEAR] (Clear)

Display different information

During play, press **DISPLAY** repeatedly to view time and different play information.

6 Listen to DAB+ radio

Digital Audio Broadcasting (DAB+) is a way of broadcasting radio digitally through a network of transmitters. It provides you with more choice, better sound quality and more information.

For first-time use

- 1 Press **DAB/FM** repeatedly to select DAB+ radio.
↳ **[FULL SCAN]** (full scan) is displayed.
- 2 Press **OK** to start full scan.
↳ The system stores all DAB+ radio stations automatically, and then broadcasts the first available station.
↳ The station list is memorized in the system. When you turn on the system next time, the station scan does not take place.
↳ If no DAB+ station is found, **[No DAB Station]** (no DAB station) is displayed, then **[FULL SCAN]** (full scan) is displayed again.

To tune to a station from the station list:

- 1 In DAB+ mode, press **◀◀/▶▶** repeatedly to navigate through the available DAB+ stations.
- 2 Press **OK** to confirm the selection.

Store DAB+ radio stations automatically



Tip

- New stations and services will be added in the DAB+ broadcast. To check for newly available DAB+ stations and services, perform full scan regularly.

In DAB+ mode, press and hold **CLOCK/SCAN** for 2 seconds.

- ↳ The system stores all the available DAB+ radio stations automatically.
- ↳ After full scan, the first available station is broadcast.

Store DAB+ radio stations manually

You can store up to 20 DAB+ radio stations.

- 1 Tune to a DAB+ radio station.
- 2 Press and hold **PROG** for 3 seconds to activate the storing mode.
- 3 Press **▲/▼** to select a number.
- 4 Press **PROG** to confirm.
- 5 Repeat steps 1-4 to store other DAB+ stations.




Note

- To remove a pre-stored DAB+ radio station, store another station in its place.

Listen to a preset DAB+ radio station

In DAB+ mode, press **▲/▼** repeatedly to select a preset channel number.

Use DAB+ menu

- 1 In DAB+ mode, press **MENU**//  to access DAB+ menu.
- 2 Press **◀** / **▶** to scroll through the menu options:
 - **[STATION LIST]** (station list): Tune to a DAB+ radio station from a list of available DAB+ stations, or scan DAB+ stations if no station is stored in the list.
 - **[FULL SCAN]** (full scan): Scan and store all available DAB+ radio stations.
 - **[MANUAL TUNE]** (manual tune): Tune to a specific channel/frequency manually.
 - **[PRUNE]** (prune): Remove invalid stations from the station list.
 - **[SYSTEM]** (system): Adjust system settings (see 'Other features - Use system menu').
- 3 Press **OK** to select an option.
- 4 Repeat steps 2-3 if sub-option is available under one option.

 **Note**

- If the system is idle for 10 seconds, the menu exits.

Show DAB+ information

While listening to DAB+ radio, press **RDS/DISPLAY** repeatedly to scroll through the following information (if available):

- ↳ Station name
- ↳ Dynamic Label Segment (DLS)
- ↳ Signal strength
- ↳ Program type (PTY)
- ↳ Ensemble Name
- ↳ Frequency
- ↳ Signal error rate
- ↳ Bitrate
- ↳ Codec
- ↳ Time and date

7 Listen to FM radio

Tune to FM radio stations

- 1 Press **DAB/FM** repeatedly to select FM tuner mode.
- 2 Press and hold **◀◀** or **▶▶** for 3 seconds.
↳ The system tunes to an FM station with strong reception automatically.
- 3 Repeat step 2 to more stations.
To tune to a station with weak signal:
Press **◀◀** or **▶▶** repeatedly until you find good reception.

Program FM radio stations automatically

Note

- You can program a maximum of 20 preset FM radio stations.

- 1 In FM tuner mode, press and hold **PROG** for 3 seconds.
↳ The system stores all the FM radio stations automatically, and then broadcasts the first preset radio station.
- 2 Press **▲** / **▼** to select the preset stations.

Program FM radio stations manually

- 1 In tuner mode, tune to an FM radio station.
- 2 Press **PROG** to activate programming mode.
↳ **[PROG]** (program) blinks.
- 3 Press **▲** or **▼** repeatedly to select a channel number.
- 4 Press **PROG** again to confirm.
- 5 Repeat steps 1-4 to store other FM stations.

Note

- To remove a pre-stored station, store another station in its place.

Select a preset radio station

In tuner mode, press **▲** or **▼** to select a preset radio station.

Show RDS information

RDS (Radio Data System) is a service that allows FM stations to show additional information.

- 1 Tune to an RDS station.
- 2 Press **RDS** repeatedly to scroll through the following information (if available):
↳ Program service
↳ Program type such as **[NEWS]** (news), **[SPORT]** (sport), **[POP M]** (pop music)...
↳ Radio text message
↳ Time

Select stereo/mono broadcast

Note

- Stereo broadcast is the default setting for tuner mode.
- For stations with weak signals: to improve the reception, change to monaural sound.

In FM tuner mode, press **OK** to switch between mono and stereo broadcast.

Use FM menu

- 1 In FM mode, press **MENU** to access FM menu.
- 2 Press **◀◀ / ▶▶** repeatedly to scroll the menu options:
 - **[SCAN SETTING]** (scan setting)
 - **[AUDIO SETTING]** (audio setting)
 - **[SYSTEM]** (see 'Other features - Use system menu')
- 3 Press **OK** to select an option.
- 4 Repeat steps 2-3 if sub-option is available under one option.

Scan setting

- **[Strong stations only]** (strong stations only): Scan FM stations with strong signals only.
- **[All stations]** (all stations): Scan all the available FM radio stations.

Audio setting

- **[Stereo allowed]** (stereo allowed): Select stereo broadcast.
- **[Forced mono]** (forced mono): Select mono broadcast.

8 Other features

Use system menu

- 1 In FM/DAB+ mode, when the [System] (system) menu is displayed, press ◀◀ / ▶▶ repeatedly to select an option.
- 2 Press **OK** to confirm the selection.

[Time]	[Auto update]	Synchronize the clock with FM or DAB stations that transmit time signal. <ul style="list-style-type: none">• [Update from any]• [Update from DAB]• [Update from FM]• [No update]
--------	---------------	---

[Factory Reset]	[Yes]	Reset the system to factory default status.
	[No]	Cancel.
[Software Upgrade]	[Yes]	Select to update software.
	[No]	Cancel.
[SW version]		Display software version.

Upgrade the firmware (if available)

Firmware upgrade for your micro system may be available in future. If you register your product at Philips website (www.philips.com/support) with a valid email address, you can get information about software update and product support.

Note

- Power supply must not be interrupted during the upgrade.
- The firmware upgrade can only be available through the mini-USB port.
- When the firmware upgrade succeeds, all settings are restored to the factory default status.

Register your product

- 1 Go to www.philips.com/support.
- 2 Click the link of "**Register my product**" (the exact wording of this link name may vary in different languages).
- 3 Log in with your account on the prompt Web page.
 - If you do not have a Philips account, create one first on this Web page.
- 4 Search your product with "**BTB2090/12**" as the keywords.
- 5 Click the link of search result to access the Web page for registering your product.
- 6 Fill in necessary information about this product to complete the registration.

Perform the upgrade

- 1 Go to www.philips.com/support.
- 2 Log in with your Philips account.
 - ↳ Support information about your registered product is displayed.
- 3 Click the link of firmware upgrade file.
- 4 Follow the firmware upgrade instructions to download the upgrade packet and complete the upgrade.
 - If the upgrade fails, reconnect the power supply, turn on this product, and perform the upgrade again.

Set the alarm timer

☰ Note

- Make sure that you have set the clock correctly.

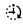
- 1 In standby mode, press and hold **SLEEP/TIMER**.
↳ **[TIMER SOURCE]** (Timer Source) is displayed.
- 2 Press **SOURCE** repeatedly or the source selection buttons on the remote control to select an alarm source: FM, CD, USB, DAB.
- 3 Press **SLEEP/TIMER** to confirm.
↳ The hour digits blink.
- 4 Press **◀◀** or **▶▶** to set the hour.
- 5 Press **SLEEP/TIMER** to confirm.
↳ The minute digits blink.
- 6 Repeat steps 4-5 to set the minute and alarm volume.

✱ Tip

- If the system is idle for 10 seconds, it exits alarm setting mode automatically.

To activate or deactivate the alarm timer:

In standby mode, press **SLEEP/TIMER** repeatedly to activate or deactivate the alarm.

- ↳  appears when the alarm timer is activated.


✱ Tip

- If CD, USB, or DAB+ radio is selected as alarm source and the audio cannot be played, FM tuner is activated automatically when alarm time comes.

Set the sleep timer

☰ Note

- Make sure that you have set the clock correctly.

- When the system is turned on, press **SLEEP/TIMER** repeatedly to select the sleep timer period (in minutes).
↳ If the sleep timer is activated,  is displayed.

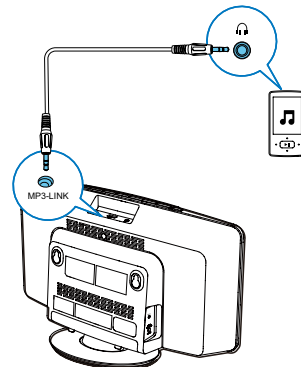
To deactivate the sleep timer:

- Press **SLEEP/TIMER** repeatedly until **[OFF]** (off) is displayed.


Play from an external audio device

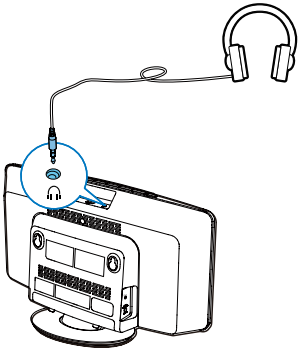
With this system, you can play audio from an external audio device like MP3 player.

- 1 Connect an MP3 link cable to:
 - the **MP3-LINK** socket (3.5mm) on the system.
 - the headphone socket on an external device.
- 2 Press **CD/MP3-LINK** repeatedly to select the MP3 link source.
- 3 Play the external audio device (see the user manual of the device).



Listen through the headphone

Plug a headphone into the  socket on the system.



9 Product information

Note

- Product information is subject to change without prior notice.

Specifications

Amplifier

Rated Output Power	2 x 10 W RMS
Frequency Response	125 -16000 Hz, ±3 dB
Signal to Noise Ratio	> 62 dBA
Total Harmonic Distortion	<1%
MP3 Link Input	650 mV RMS

Disc

Laser Type	Semiconductor
Disc Diameter	12 cm/8 cm
Support Disc	CD-DA, CD-R, CD-RW, MP3-CD, WMA-CD
Audio DAC	24 Bits/44.1KHz
Total Harmonic Distortion	<1 %
Frequency Response	125 -16000 Hz, ±3 dB
Signal to Noise Ratio	>70 dBA

Tuner (FM)

FM:

Tuning Range	87.5 - 108 MHz
Tuning Grid	50 KHz
Sensitivity	
- Mono, 26dB S/N Ratio	<22 dBf
- Stereo, 46dB S/N Ratio	<51.5 dBf
Total Harmonic Distortion	<3%
Signal to Noise Ratio	>55 dBA

DAB:

Tuning Range	174.92-239.20 MHz
--------------	-------------------

Bluetooth

Bluetooth Version	V3.0
Bluetooth Frequency Band	2.4 GHz ~ 2.48 GHz ISM Band
Bluetooth Range	10 m (free space)

General information

AC Power	Model: AS360-120-AE250; Input: 100 -240V ~, 50/60 Hz, 1.2A; Output: 12V = 2.5 A Model: AS300-120-AE250; Input: 100 -240V ~, 50/60 Hz, 1.1A; Output: 12V = 2.5 A
Operation Power Consumption	15 W
Standby Power Consumption	< 1 W
ECO Standby Power Consumption	< 0.5 W
Dimensions - Main Unit (W x H x D)	400 x 235 x 98 mm
Weight - Main Unit	2.2 kg

USB playability information

Compatible USB devices:

- USB flash memory (USB1.1)
- USB flash players (USB1.1)
- memory cards (requires an additional card reader to work with this unit)

Supported formats:

- USB or memory file format: FAT12, FAT16, FAT32 (sector size: 512 bytes)
- MP3 bit rate (data rate): 32-320 Kbps and variable bit rate
- WMA v9 or earlier
- Directory nesting up to a maximum of 8 levels
- Number of albums/ folders: maximum 99
- Number of tracks/titles: maximum 999
- ID3 tag v2.0 or later
- File name in Unicode UTF8 (maximum length: 16 bytes)

Unsupported formats:

- Empty albums: an empty album is an album that does not contain MP3/WMA files, and is not be shown in the display.
- Unsupported file formats are skipped. For example, Word documents (.doc) or MP3 files with extension .dlf are ignored and not played.
- AAC, WAV, PCM audio files
- DRM protected WMA files (.wav, .m4a, .m4p, .mp4, .aac)
- WMA files in Lossless format

Supported MP3 disc formats

- ISO9660, Joliet
- Maximum title number: 999 (depending on file name length)
- Maximum album number: 99
- Supported sampling frequencies: 32 kHz, 44.1 kHz, 48 kHz
- Supported Bit-rates: 32~320 (kbps), variable bit rates

10 Troubleshooting



Warning

- Never remove the casing of this device.

To keep the warranty valid, never try to repair the system yourself.

If you encounter problems when using this device, check the following points before requesting service. If the problem remains unsolved, go to the Philips Web page (www.philips.com/support). When you contact Philips, make sure that the device is nearby and the model number and serial number are available.

No power

- Ensure that the AC power cord of the unit is connected properly.
- Ensure that there is power at the AC outlet.
- As a power-saving feature, the system switches off automatically 15 minutes after track play reaches the end and no control is operated.

No sound or poor sound

- Adjust the volume.
- Disconnect the headphones.

No response from the unit

- Disconnect and reconnect the AC power plug, then turn on the unit again.
- As a power-saving feature, the system switches off automatically 15 minutes after track play reaches the end and no control is operated.

Remote control does not work

- Before you press any function button, first select the correct source with the remote control instead of the main unit.
- Reduce the distance between the remote control and the unit.
- Insert the battery with its polarities (+/- signs) aligned as indicated.
- Replace the battery.

- Aim the remote control directly at the sensor on the front of the unit.

No disc detected

- Insert a disc.
- Check if the disc is inserted upside down.
- Wait until the moisture condensation at the lens has cleared.
- Replace or clean the disc.
- Use a finalized CD or correct format disc.

Cannot display some files in USB device

- The number of folders or files in the USB device has exceeded a certain limit. This phenomenon is not a malfunction.
- The formats of these files are not supported.

USB device not supported

- The USB device is incompatible with the unit. Try another one.

Poor radio reception

- Increase the distance between the unit and your TV or VCR.
- Fully extend the FM antenna.

Timer does not work

- Set the clock correctly.
- Switch on the timer.

Clock/timer setting erased

- Power has been interrupted or the power cord has been disconnected.
- Reset the clock/timer.



Specifications are subject to change without notice.

2014 © WOOX Innovations Limited.

All rights reserved.

Philips and the Philips' Shield Emblem are registered trademarks of Koninklijke Philips N.V. and are used by WOOX Innovations Limited under license from Koninklijke Philips N.V.

BTB2090_12_UM_V1.0

