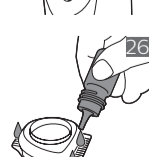
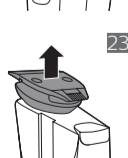
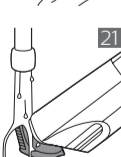
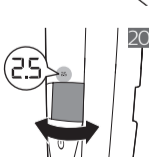
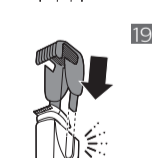
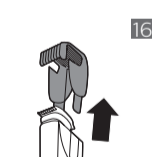
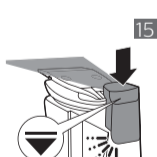
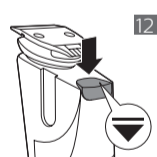
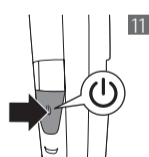
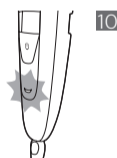
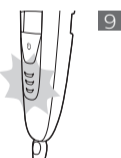
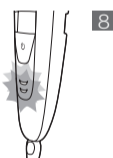
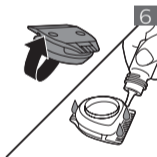
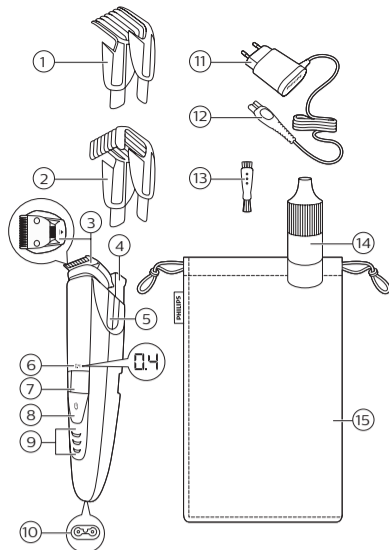


© 2016 Koninklijke Philips N.V.
All rights reserved
保留所有权利
4222.002.8403.3 (12/2016)
> 75% 循环再造纸

>75% recycled paper >75% papier recyclé





English

Introduction

Congratulations on your purchase and welcome to Philips! To fully benefit from the support that Philips offers, register your product at www.philips.com/welcome.

General description (Fig. 1)

- 1 Precision trimming comb
- 2 Standard trimming comb
- 3 Turnable trimming head
- 4 Laser guide
- 5 Guiding groove for trimming comb
- 6 Length setting display
- 7 Zoom wheel for length setting
- 8 On/off button
- 9 Battery lights
- 10 Socket for small plug
- 11 Supply unit (adapter)
- 12 Small plug
- 13 Cleaning brush
- 14 Bottle of oil
- 15 Storage pouch

Important safety information

Read this important information carefully before you use the appliance and its accessories and save it for future reference. The accessories supplied may vary for different products.

Danger

- Keep the supply unit dry (Fig. 2).

Warning

- To charge the battery, only use the detachable supply unit (HQ8505) provided with the appliance.
- The supply unit contains a transformer. Do not cut off the supply unit to replace it with another plug, as this causes a hazardous situation.
- This appliance can be used by children aged from 8 years and above and persons with reduced physical, sensory or mental capabilities or lack of experience and knowledge if they have been given supervision or instruction concerning use of the appliance in a safe way and understand the hazards involved. Children shall not play with the appliance. Cleaning and user maintenance shall not be made by children without supervision.
- Always unplug the appliance before you clean it under the tap.
- Always check the appliance before you use it. Do not use the appliance if it is damaged, as this may cause injury. Always replace a damaged part with one of the original type.
- Do not open the appliance to replace the rechargeable battery.

Caution

- Never immerse the charging stand in water and do not rinse it under the tap (Fig. 2).
- Never immerse the appliance in water. Do not use the appliance in the bath or shower.
- Never use water hotter than 80°C to rinse the appliance.
- Only use this appliance for its intended purpose as shown in the user manual.
- For hygienic reasons, the appliance should only be used by one person.
- Do not use the supply unit in or near wall sockets that contain an electric air freshener to prevent irreparable damage to the supply unit.
- Never use compressed air, scouring pads, abrasive cleaning agents or aggressive liquids such as petrol or acetone to clean the appliance.

Electromagnetic fields (EMF)

- This Philips appliance complies with all applicable standards and regulations regarding exposure to electromagnetic fields.

General

- This appliance can be safely cleaned under the tap (Fig. 3).
- The appliance is suitable for mains voltages ranging from 100 to 240 volts.
- The supply unit transforms 100-240 volts to a safe low voltage of less than 24 volts.

Class 1 laser product

- The product contains a class 1 laser guide which complies with IEC60825-1 (Fig. 4).

- To avoid all risks, point the laser beam away from your eyes and do not stare directly into the laser beam (Fig. 5).

Preparing for use

Before first use, lubricate the teeth of the trimming head with a few drops of the oil supplied (Fig. 6).

Charging

Charge the appliance fully before you use it for the first time and after a long period of disuse.

Charging takes about 60 minutes if the appliance is completely empty.

- 1 Make sure the appliance is switched off and the laser guide is in 'off' position.
 - 2 Insert the small plug into the appliance and put the supply unit in the wall socket (Fig. 7).
- First the bottom battery light flashes orange and white alternately (Fig. 8).
 - After about 3 minutes, the battery light flashes white only. At this point the battery contains enough energy for one cordless trimming session.
 - As the charging process continues, more battery lights start flashing to show that the charge level of the battery increases (Fig. 9).
 - When the appliance is fully charged, all battery lights light up solid white.

If the appliance is still connected to the wall socket when it is fully charged, the battery lights go out after 30 minutes.

Battery low and battery empty signals

- When the battery is almost empty, the bottom battery light starts flashing orange. When you switch off the appliance, the bottom battery light continues to flash orange for a few seconds (Fig. 10).
- The battery light at the bottom of the appliance flashes orange at a higher frequency when the battery is empty and if you:
 - Press the on/off button
 - Turn the zoom wheel
 - Activate the laser guide

Corded trimming

You can also operate the appliance from the wall socket.

- 1 Insert the small plug into the socket of the appliance (Fig. 7).
- 2 Put the supply unit in the wall socket.
- 3 Press the on/off button to switch on the appliance (Fig. 11).

Using the appliance

You can use the appliance to trim facial hair (beard, moustache and sideburns). This appliance is not intended for trimming lower body parts or scalp hair.

Trimming with the laser guide

You can use the laser guide to define the edges of your beard, sideburns and moustache. The laser guide can be used with the 32mm (1.25in) side as well as the 15mm (0.6in) side of the trimming head.

Note: The laser guide can only be used when you trim without comb.

Note: Although the light from the laser guide is not harmful to the eyes, we advise you not to stare into the light and to avoid shining the light into your eyes.

- 1 Press the on/off button once to switch on the appliance (Fig. 11).
 - 2 To trim with the laser guide, press the top of the laser guide to switch it on (Fig. 12).
- The laser guide pops up and its light shines over the top of the trimming head.

Note: If you trim with the laser guide, make sure you push the laser guide to 'off' position before you turn the trimming head. You may damage the laser guide if you try to turn the trimming head while the laser guide is still popped up (Fig. 13).

- 3 Start trimming where you want to define the edges of your beard and use the laser guide to guide you during trimming (Fig. 14).

Tip: Hold the appliance so that the laser light shines exactly on the edge you want to trim and then place the trimming head on your skin.

- 4 When you are finished, press the on/off button to switch off the appliance (Fig. 11).

Tip: When the motor of the appliance is not operating, the laser guide switches off automatically within 3 minutes. In the 3 minutes before the automatic switch-off of the laser guide, you can use the laser guide to check if the contours of your beard are symmetrical or straight.

- 5 Push down the top of the laser guide to lock it in 'off' position ('click') (Fig. 15).

Trimming without comb

If you trim without comb, your hair is cut off close to the skin. The trimming head has a 32mm (1.25in) side and a 15mm (0.6in) side. The 15mm (0.6in) side of the trimming head allows more precise styling and contouring than the 32mm (1.25in) side.

- 1 If one of the combs is still on the trimming head, pull it off (Fig. 16).
- Never pull at the flexible top of the comb. Always pull at the sides.
- 2 Turn the trimming head until the side you want to use points to the front of the appliance (Fig. 13).
- 3 Press the on/off button to switch on the appliance (Fig. 11).
- 4 Hold the appliance in the position that is most convenient for the area you want to trim and make strokes in the desired direction.

Tip: For a comfortable trim close to your skin, place the flat side of the trimming head against your skin and make strokes in the desired direction.

- 5 When you are finished, press the on/off button to switch off the appliance (Fig. 11).

Trimming with comb

The appliance comes with two combs: a standard comb and a precision comb. These combs keep the trimming head at a certain distance from your skin. This distance determines the remaining hair length and can be adjusted by turning the zoom wheel.

- Use the standard comb to trim your beard (Fig. 17).
 - Use the precision comb to trim hard-to-reach areas, for instance under your nose (Fig. 18).
- 1 Slide the comb into the guiding grooves on both sides of the appliance ('click') (Fig. 19).

Note: The comb does not fit on the trimming head when the 15mm (0.6in) side is pointing towards the front of the appliance. If this is the case, turn the trimming head before you slide the comb onto the trimming head.

- 2 Turn the zoom wheel to select a length setting (Fig. 20).
 - The length setting selected lights up on the front of the appliance.
 - You can select a length from 0.4mm to 7mm (see 'Length settings in mm').
- 3 Press the on/off button once to switch on the appliance (Fig. 11).
- 4 To trim your beard, move the comb through the hair slowly.
- 5 When you are finished, press the on/off button to switch off the appliance (Fig. 11).

Tips:

- Always make sure that the tips of the trimming comb points in the direction in which you move the appliance.
- Make sure that the flat part of the trimming comb is always in full contact with the skin to obtain an even hair length result.
- Since hair grows in different directions, you need to move the appliance in different directions as well (upward, downward or across).
- Trimming is easier when the skin and hair are dry.

Length settings in mm

0.4	0.6	0.8	1.0	1.2
1.4	1.6	1.8	2.0	2.5
3.0	3.5	4.0	4.5	5.0
6.0	7.0			

Cleaning and maintenance

Clean the appliance after every use.

Warning: Never use compressed air, scouring pads, abrasive cleaning agents or aggressive liquids such as petrol or acetone to clean the appliance.

Cleaning the appliance and the combs

- 1 Switch off the appliance.
- 2 Pull the comb off the trimming head (Fig. 16).
- 3 Clean the trimming head under the tap with lukewarm water (Fig. 21) or clean it with the cleaning brush supplied.
- 4 Clean the trimming combs under the tap (Fig. 22) or clean them with the cleaning brush supplied.

Tip: To make sure that the appliance is dry before you store it in the pouch, let it dry in a well-ventilated room with the laser popped up.

Cleaning the trimming head connector

Note: For optimal trimming performance, clean and lubricate the cutting element after each use.

- 1 Switch off the appliance.
- 2 Pull the comb off the trimming head (Fig. 16).
- 3 Pull the trimming head off the appliance (Fig. 23).

Note: To prevent damage to the laser guide, put the laser guide in 'off' position before you remove the trimming head.

- 4 Clean the trimming head connector with the cleaning brush supplied (Fig. 24).
- 5 Clean the inside of the trimming head with the cleaning brush supplied (Fig. 25).
- 6 For optimal trimming performance, lubricate the cutting element teeth with a drop of the oil supplied after each use (Fig. 26).
- 7 After cleaning, put the trimming head back onto the appliance.

Ordering accessories

To buy accessories or spare parts, visit www.shop.philips.com/service or go to your Philips dealer. You can also contact the Philips Consumer Care Center in your country (see the international warranty leaflet for contact details).

Warranty and support

If you need information or support, please visit www.philips.com/support or read the international warranty leaflet.

Warranty restrictions

Cutting units are not covered by the terms of the international warranty because they are subject to wear.

Recycling

- Do not throw away the product with the normal household waste at the end of its life, but hand it in at an official collection point for recycling. By doing this, you help to preserve the environment.
- This product contains a built-in rechargeable battery which shall not be disposed of with normal household waste. We strongly advise you to take your product to an official collection point or a Philips service centre to have a professional remove the rechargeable battery.

- Follow your country's rules for the separate collection of electrical and electronic products and rechargeable batteries. Correct disposal helps prevent negative consequences for the environment and human health.

Removing the rechargeable battery

Only remove the rechargeable battery when you discard the appliance. Before you remove the battery, make sure that the appliance is disconnected from the wall socket and that the battery is completely empty.

Take any necessary safety precautions when you handle tools to open the appliance and when you dispose of the rechargeable battery.

- 1 Check if there are screws in the back or front of the appliance. If so, remove them.
- 2 Remove the back and/or front panel of the appliance with a screwdriver. If necessary, also remove additional screws and/or parts until you see the printed circuit board with the rechargeable battery.
- 3 Remove the rechargeable battery.

Frequently asked questions

This chapter lists the questions most frequently asked about the appliance. If you cannot find the answer to your question, visit

www.philips.com/support for more frequently asked questions or contact the Consumer Care Center in your country.

Question	Answer
Is the laser light harmful to my eyes?	No, it is not. The appliance has been thoroughly tested for home use. Nevertheless, we advise you not to stare into the light and to avoid shining the light directly into your eyes.
I cannot turn the trimming head. Why?	You have to push the laser guide to 'off' position before you can turn the trimming head.
Can I clean this appliance under a running tap?	The appliance is watertight and you can clean it under a running tap with lukewarm water
	Tip: To prevent condensation on the laser window of the laser guide, we advise you not to rinse the handle of the appliance under the tap.
Why doesn't the comb fit on the trimming head?	The combs can only be used when the wide side of the trimming head points towards the front of the appliance. If the comb does not fit:
	1) you may have tried to fit it onto the trimming head when the narrow side of the trimming head points towards the front of the appliance. Turn the trimming head to normal trimming position and then slide the comb onto it.
	2) The laser guide is still on. To trim with one of the combs, you first have to push the laser guide to 'off' position.
What is the difference between the combs?	The standard comb is most suitable for trimming your beard to an even length. The precision comb is especially suitable for trimming hard-to-reach areas, for instance beneath your nose.
Why can't I see the laser light?	The laser guide is in 'off' position. Switch on the laser guide by pressing the top of the laser guide.
	You switched off the appliance with the laser guide still popped up. After 3 minutes, the laser guide switches off automatically. Switch on the laser guide by pressing the top of the laser guide.
	You are using the appliance in a room or area where the light is very bright. Move to a room or area where the light is less bright.
Why can't I see the hairs when I use the laser guide?	You are probably using the appliance in a room or area that is too dark. Switch on the light in the room or go to a room or area where there is more light
How long does it take to charge the appliance for just one trimming session?	This appliance has a quick-charge function. When the appliance starts charging, the bottom battery light flashes orange and white alternately. After 3 minutes the bottom battery light stops flashing orange and only flashes white. At this point, the battery contains enough energy for one trimming session
Why don't I see a straight uninter-rupted laser line?	The laser light from the laser guide may be interrupted because:
	The laser window of the laser guide is dirty. Pop up the laser guide and wipe the laser window clean with a cloth.
	There is condensation behind the laser window. Pop up the laser guide and let it dry in a well-ventilated room. The laser guide switches off automatically after 3 minutes.

Question	Answer
	You did not assemble the trimming head correctly. Push down the trimming head to make sure it is assembled correctly.
Why doesn't the appliance trim as well as it used to?	The cutting element is not properly lubricated, which causes friction. Lubricate the cutting element teeth with a drop of the oil supplied.
Why has the operating time decreased?	The cutting element is not properly lubricated, which causes friction. Lubricate the cutting element teeth with a drop of the oil supplied..

简体中文

简介

感谢您的惠顾，欢迎光临飞利浦！为了让您能充分享受飞利浦提供的支持，请在 www.philips.com/welcome 上注册您的产品。

基本说明 (图 1)

- 1 精细修剪梳
- 2 标准修剪梳
- 3 可转动修剪刀头
- 4 激光导引
- 5 修剪梳导槽
- 6 长度设定显示屏
- 7 长度设定缩放轮
- 8 开/关按钮
- 9 电池指示灯
- 10 小插头插座
- 11 电源部件 (适配器)
- 12 小插头
- 13 清洁刷
- 14 油瓶
- 15 存储袋

重要安全信息

使用本产品及其附件之前，请仔细阅读本重要信息，并妥善保管以供日后参考。随附的附件可能因产品而异。

危险

- 保持电源部件干燥 (图 2)。
- 警告符号注释：禁止在打开的水龙头下进行清洗 (图 2)。

警告

- 要给电池充电，请仅使用产品随附的可拆卸电源部件 (HQ8505)。
- 电源部件中包含一个变压器。请勿自行更换电源部件的插头，否则将导致严重后果。
- 本产品也可以由 8 岁或以上年龄的儿童以及肢体不健全、感觉或精神上有障碍或缺乏相关经验和知识的人士使用，但前提是有人对他们使用本产品进行监督或指导，以确保他们安全使用，并且让他们明白相关的危害。切勿让儿童玩弄本产品。不要让儿童在无人监督的情况下对本产品进行清洁和保养。
- 在自来水龙头下清洗本产品之前，务必拔掉其电源插头。
- 使用前，请务必检查产品。请勿使用损坏的产品，否则可能对人体造成伤害。请务必用原装型号更换损坏的部件。
- 切勿拆开本产品更换充电电池。

警告

- 切勿将充电座浸入水中，也不要在水龙头下冲洗 (图 2)。
- 切勿将产品浸入水中。请勿在洗澡或淋浴时使用本产品。
- 切勿使用温度高于 80° C 的热水冲洗本产品。
- 只能将本产品用于用户手册中所示的原定用途。
- 出于卫生的目的，本产品只能供一个人使用。
- 请勿在包含电动空气清新器的墙壁插座上或其周围使用电源部件，以免电源部件受到不可修复的损坏。
- 切勿使用压缩气体、钢丝绒、研磨性清洁剂或腐蚀性液体 (例如汽油或丙酮) 来清洁产品。

电磁场 (EMF)

- 本 Philips 产品符合所有有关暴露于电磁场的适用标准和法规。

概述

- 该产品可放心在水龙头下 (图 3) 清洗。
- 符号注释：适合用在打开的水龙头下进行清洗 (图 3)。
- 本产品适合在 100 - 240 伏的电源电压下工作。
- 该电源部件可将 100-240 伏的电压转换为 24 伏以下的安全低电压。

1 级激光产品

- 本产品包含符合 IEC60825-1 (图 4) 要求的 1 级激光导引。
- 为避免所有风险，请将激光束远离您的双眼，切勿直视激光束 (图 5)。

使用准备

首次使用之前，请用几滴随附 (图 6) 的油润滑修剪刀头的齿。

充电

首次使用前或长时间不用之后，请为产品充满电。如果本产品电能完全耗尽，请充电大约 60 分钟。

- 1 确保产品已关闭，且激光导引位于“关闭”位置。
 - 2 将充电插头插入产品，然后将电源部件插入电源插座 (图 7)。
- 首先底部电池指示灯会交替 (图 8) 闪烁橙色和白色。
 - 大约 3 分钟后，电池指示灯仅呈白色闪烁。此时电池包含的电量足够完成一次不接电源的修剪过程。
 - 充电过程继续时，更多指示灯开始闪烁以显示电池充电量增加 (图 9)。
 - 产品充满电时，所有充电指示灯会呈白色亮起。
- 如果产品在充满电时仍然连接电源插座，则电池指示灯将在 30 分钟后熄灭。

电池电量不足和电池耗尽信号

- 当电池电量即将耗尽时，底部电池指示灯开始闪烁橙色。关闭产品时，底部电池指示灯将呈橙色持续闪烁几秒钟 (图 10)。

- 当电池电量耗尽且您执行以下操作时，本产品底部的充电指示灯将以较高频率闪烁橙色：
 - 按开/关按钮
 - 旋转缩放轮
 - 激活激光导引

接电修剪

您也可以连接电源插座操作本产品。

- 1 将小插头插入产品 (图 7) 插座。
- 2 将电源部件插入电源插座。
- 3 按开/关按钮启动产品 (图 11)。

使用本产品

您可以使用本产品来修剪面部须发（胡须、须髥和鬓角）。请勿使用本产品修剪面部以外的毛发，也不要用于理发。

使用激光导引进行修剪

您可以使用激光导引确定胡须、鬓角和须髥的边缘。激光导引可与修剪刀头的 32 毫米（1.25 英寸）一侧和 15 毫米（0.6 英寸）一侧一起使用。

注意： 激光导引只能在不使用修剪梳修剪时使用。

注意： 尽管激光导引的光线对眼睛无害，但我们建议您不要直视光线并且避免光线照射您的双眼。

- 1 要打开本产品 (图 11)，请按一下开/关按钮。
- 2 要使用激光导引进行修剪，请按下激光导引顶部将其打开 (图 12)。

- 激光导引将弹出，其光线会照在修剪刀头顶部。

注意： 如果您使用激光导引进行修剪，在旋转修剪刀头之前，请确保将激光导引推至“关闭”位置。如果您在激光导引仍弹出 (图 13) 时旋转修剪刀头，可能会损坏激光导引。

- 3 在您想确定胡须边缘的位置开始修剪，并且在修剪过程中使用激光导引指导您修剪 (图 14)。

提示： 握持产品以确保激光能正好照在您想修剪的边缘，然后将修剪刀头放在您的皮肤上。

- 4 完成剃须后，按开/关按钮关闭产品 (图 11)。

提示： 当产品的马达不工作时，激光导引会在 3 分钟内自动关闭。在激光导引自动关闭前的 3 分钟内，您可以使用激光导引检查您的胡须轮廓是否对称或笔直。

- 5 下推激光导引的顶部，将其锁在“关闭”位置（可听到“咔哒”一声） (图 15)。

不使用修剪梳修剪

如果您不使用修剪梳进行修剪，则会贴近皮肤修剪您的须发。修剪刀头有 32 毫米（1.25 英寸）一侧和 15 毫米（0.6 英寸）一侧。修剪刀头的 15 毫米（0.6 英寸）一侧比 32 毫米（1.25 英寸）一侧的造型和轮廓效果更精确。

- 1 如果某个修剪梳仍在修剪刀头上，请将其拔出 (图 16)。
- 切勿拉扯梳齿附件容易变形的顶部。请务必从侧面拔。
- 2 旋转修剪刀头，直至您要使用的一侧指向产品 (图 13) 正面。
- 3 按开/关按钮启动产品 (图 11)。
- 4 在最方便修剪的位置握住产品，按所需的方向来回移动。

提示： 为了获得舒适的贴肤修剪，请将修剪刀头平坦的一侧紧贴皮肤放置，然后按所需的方向来回移动。

- 5 完成剃须后，按开/关按钮关闭产品 (图 11)。

使用修剪梳修剪

本产品随附两款梳齿：标准梳齿和精密梳齿。这些梳齿可使修剪刀头与皮肤保持一定的距离。此距离可确定剩余的须发长度，并且可通过转动缩放轮来调整。

- 使用标准梳齿修剪胡须 (图 17)。
- 使用精密梳齿修剪难以触及的部位，例如鼻子 (图 18) 下方。

- 1 将梳齿滑入产品两侧的导槽中（可听到“咔哒”一声） (图 19)。

注意： 当修剪刀头的 15 毫米（0.6 英寸）一侧指向产品正面时，梳齿无法装入修剪刀头。如果发生这种情况，请先转动修剪刀头，然后再将梳齿滑入修剪刀头。

- 2 旋转缩放轮可选择长度设定 (图 20)。
 - 选择的长度设定会在产品正面亮起。
 - 您可以选择 0.4 毫米至 7 毫米之间的长度（请参见“以毫米为单位的长度设定”）。
- 3 要打开本产品 (图 11)，请按一下开/关按钮。
- 4 要修剪胡须，请将修剪梳在毛发上缓缓移动。
- 5 完成剃须后，按开/关按钮关闭产品 (图 11)。

使用提示：

- 始终确保修剪梳齿方向与产品移动方向一致。
- 确保修剪梳的扁平部分始终完全接触皮肤，以获得均匀的须发长度。
- 由于头发会朝不同方向生长，您还需要沿不同方向（向上、向下或交叉）移动本产品。
- 皮肤和毛发干燥时修剪更容易。

以毫米为单位的长度设定

0.4	0.6	0.8	1.0	1.2
1.4	1.6	1.8	2.0	2.5
3.0	3.5	4.0	4.5	5.0
6.0	7.0			

清洁和保养

每次使用后均应清洁产品。

警告： 切勿使用压缩气体、钢丝绒、研磨性清洁剂或腐蚀性液体（例如汽油或丙酮）来清洁产品。

清洁产品和修剪梳

- 1 关闭产品。
- 2 将修剪梳从修剪刀头 (图 16) 中拔出。
- 3 在温水 (图 21) 水龙头下清洗修剪刀头或用随附的清洁刷进行清洁。
- 4 在水龙头 (图 22) 下清洗修剪梳或用随附的清洁刷进行清洁。

提示： 为了确保将产品放入软袋之前保持干燥，请将其放在通风良好的房间内干燥，同时弹出激光导引。

清洁修剪刀头连接器

注意： 为获得最佳修剪效果，请在每次使用后清洁并润滑修剪部件。

- 1 关闭产品。
- 2 将修剪梳从修剪刀头 (图 16) 中拔出。
- 3 将修剪刀头从产品 (图 23) 中拔出。

注意： 为防止损坏激光导引，请将激光导引置于“关闭”位置，然后取下修剪刀头。

- 4 用随附 (图 24) 的清洁刷清洁修剪刀头接头。

- 5 用随附 (图 25) 的清洁刷清洁修剪刀头内侧。
- 6 为获得最佳修剪效果, 请在每次使用 (图 26) 后用一滴随附的油润滑修剪部件的齿。
- 7 清洁后, 将修剪刀头放回产品上。

订购配件

如需购买附件或备件, 请访问 www.shop.philips.com/service 或联系您的飞利浦经销商。您还可以联系所在国家/地区的飞利浦客户服务中心 (请参阅国际保修卡了解详细联系信息)。

保修和支持

如需信息或支持, 请访问 www.philips.com/support 或阅读国际保修卡。

保修条款

修剪部件不在国际保修条款的涵盖范围之内, 因为修剪部件属于易磨损物品。

回收

- 弃置本产品时, 请不要将其与一般生活垃圾放在一起, 应将其交给政府指定的回收中心。这样做将有利于环保。
- 此产品包含内置充电电池: 请勿将充电电池与一般生活垃圾一起弃置。强烈建议您将自己的产品送到官方收集点或飞利浦服务中心, 让专业人士移除充电电池。
- 遵循您的国家/地区有关分类回收电子电气产品和充电电池的规定。正确弃置产品有助于避免对环境和人类健康造成不良后果。

部件名称	产品中有害物质的名称及含量					
	有害物质					
	铅 (Pb)	汞 (Hg)	镉 (Cd)	六价铬 (Cr (VI))	多溴联苯 (PBB)	多溴二苯醚 (PBDE)
PCB's 集成电路板	X	O	O	O	O	O
Electrical contact pins 电接触片	X	O	O	O	O	O
Power plug 电源插头	X	O	O	O	O	O
Internal metal parts 内部金属件	X	O	O	O	O	O

本表格依据SJ/T 11364的规定编制。
O: 表示该有害物质在该部件所有均质材料中的含量均在GB/T 26572规定的限量要求以下。
X: 表示该有害物质至少在该部件的某一均质材料中的含量超出GB/T 26572规定的限量要求。

- 该表格中所显示的“有害物质”在产品正常使用情况下不会对人身和环境产生任何伤害。
- 该表格中所显示的“有害物质”及其存在的部件向消费者和回收处理从业者提供相关物质的存在信息, 有助于产品废弃时的妥善处理。

PHILIPS

产品 : 飞利浦胡须造型器
型号 : BT9290
额定电压 : 220V~
额定频率 : 50Hz
额定输入功率: 9 W
生产日期 : 请见产品本体
产地 : 中国广东广州

飞利浦 (中国) 投资有限公司
 上海市天目西路218号1602-1605
 全国顾客服务热线: 4008 800 008

本产品根据国标 GB4706.1-2005, GB4706.9-2008 制造

保留备用
发行日期: 15/12/2016

拆下充电电池

仅在丢弃本产品时方可取出充电电池。卸下电池之前, 请确保产品与电源插座断开连接并且电池电量已耗尽。

当您使用工具打开产品时以及在您弃置充电电池时, 请采取必要的安全保护措施。

- 1 检查产品的前面和后面是否有螺丝。如果有, 请将其拆下。
- 2 用螺丝刀卸下产品的前面板和/或后面板。必要时还需要拆下更多的螺丝和/或部件, 直到您看见装有充电电池的印刷电路板为止。
- 3 拆下充电电池。

常见问题

本章列出了关于本产品最常见的问题。如果您无法找到问题的答案, 请访问 www.philips.com/support 查阅更多常见问题, 或联系您所在国家/地区的飞利浦客户服务中心。

问题	回答
激光对我的眼睛有害吗?	无害。本产品已经过全面测试, 适合家庭使用。但是我们仍建议您不要直视光线并且避免光线直射您的眼睛。
我无法旋转修剪刀头, 为什么?	您必须在旋转修剪刀头前将激光导引推至“关闭”位置。
我能否在水龙头下清洁本产品?	本产品防水, 您可以在温水水龙头下清洗。 提示: 为了防止激光导引的激光窗口出现冷凝现象, 我们建议您不要在水龙头下冲洗本产品的手柄。
为什么修剪梳无法装入修剪刀头?	修剪梳只能在修剪刀头的宽面朝向产品正面时使用。如果修剪梳无法装入: 1) 您可能试图在修剪刀头的窄面朝向产品正面时将修剪梳装入修剪刀头。请将修剪刀头旋转至正常修剪位置, 然后将修剪梳滑入。 2) 激光导引仍然打开。要使用其中一个修剪梳修剪, 您必须先将激光导引推至“关闭”位置。
梳齿之间有什么不同?	标准梳齿最适合将胡须修剪至平均长度。精密梳齿特别适合修剪难以触及的部位, 例如鼻子下方。
为什么我看不到激光?	激光导引位于“关闭”位置。按下激光导引顶部可打开激光导引。 您在激光导引仍弹出时关闭了产品。3分钟后, 激光导引会自动关闭。按下激光导引顶部可打开激光导引。 您在光线非常明亮的房间或区域中使用本产品。请移步至光线较暗的房间或区域。

问题	回答
为什么使用激光导引时我看不到毛发？	您可能在太暗的房间或区域中使用本产品。打开房内的灯，或移步至光线较亮的房间或区域。
产品只需充电多长时间即可完成一次修剪过程？	本产品具有快速充电功能。产品开始充电时，底部的电池指示灯会交替闪烁橙色和白色。3分钟后，底部电池指示灯停止闪烁橙色，仅呈白色闪烁。此时电池包含的电量足够完成一次修剪过程。
为什么我看不到笔直的不间断激光？	激光导引中的激光可能会因以下原因而中断： 激光导引的激光窗口变脏。弹出激光导引，然后用布将激光窗口擦拭干净。 激光窗口后方出现冷凝现象。弹出激光导引，让它在通风良好的房间内自然晾干。激光导引将在3分钟后自动关闭。 您没有正确组装修剪刀头。向下推动修剪刀头，以确保其正确安装。
为什么产品的修剪效果没有以前好？	未正确润滑修剪部件会产生摩擦。请用一滴油润滑修剪部件的齿。
为什么运行时间会缩短？	未正确润滑修剪部件会产生摩擦。请用一滴油润滑修剪部件的齿。