

Beard & Head trimmer Series 5100



- 0.2mm precision settings
- Stainless steel blades
- 70 min cordless use/1h charge
- 3 combs for beard and hair

BT5210/42

Even length at every angle

Engineered for an effortless even trim

This beard & head trimmer helps you to achieve exactly the 3-day stubble, short or long beard look or hair style you want. The new hair lift comb lifts & guides hairs to the blade for efficient one pass trimming.

Benefits

Effortless trimming

- Lifts the hair up to the blade for an even result
- Blades are double sharpened for faster trimming*
- Guides the hairs to the cutter for effortless trimming
- Includes 2 combs for short & long hair (0,4-13mm)

Perfect 3 day stubble

- Keep perfect 3-day stubble by using the 0.4mm setting daily

Skin-friendly performance

- Skin-friendly, high-performance blades for the perfect trim

Easy to use

- Select your lengths from 1/64"-1/2" with the zoom wheel
- 70 minutes runtime after a 1 hour charge, or plug it in
- Fully washable for easy, thorough cleaning
- 5 year warranty offer

PHILIPS

Features

Dynamic Beard Guide System



Innovative lift & trim technology effectively lifts and guides hairs for a more efficient cut. Rounded contour comb technology is designed to deliver a skin friendly and more even trim.

Self-sharpening steel blades



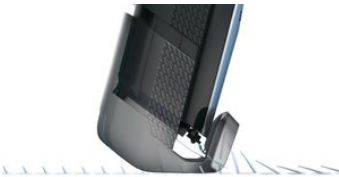
The blades are designed to effectively cut each hair perfectly, preventing skin irritation. The y are double sharpened to cut more hairs in every pass for faster trimming.

Built-in 17 length settings



Select your preferred trim length by simply turning the zoom wheel until the length you want is displayed from 0,4 - 7mm (1/64" to 9/32") with 0,2mm precision for beard and short hair trimming and 7 – 13mm (9/32" to 1/2") for long hair trimming.

Integrated Hair lift comb



Trim your stubble in one quick pass, while being gentle on your skin. Our new Integrated hair lift comb lifts and guides the hairs to the level of the blades for effortless, even trimming.

Corded and cordless use

Li-Ion

70 minutes

Advanced lithium-ion battery delivers maximum power for high performance cutting. Charge your beard trimmer for 1 hour to get 70 minutes of cordless use. It can also be used while charging.

Fully washable



Simply rinse the beard trimmer head under the tap to thoroughly clean it. The trimmer is completely waterproof.

Short & long hair combs



Just put these extra hair combs on when you want to touch up your haircut. Use the short hair comb for 0,4-7mm and the long hair comb for 7-13mm length.

Skin-friendly blades



Get a perfect yet protective trim, time after time. The beard trimmer's steel blades lightly brush against one another, sharpening themselves as they trim so they stay extra sharp and effective. They also have rounded tips and combs to help prevent skin irritation.

Ideal stubble setting



Keep an ideal 3- day stubble, day after day, by using the trimmer's shortest 0.4mm setting.

Built to last



We back this Philips Norelco trimmer with a 5 year warranty offer. Simply register your trimmer on www.norelco.com/register to receive an additional 3 years from our previous warranty coverage plan giving you a 5-year worldwide warranty in total. Our grooming products are built to last. You'll never need to oil it, and it's compatible with all worldwide voltages.

Specifications

Please note that this is a pre-sales leaflet. The contents of this leaflet reflect the best of our knowledge per date and country mentioned above. The contents of this leaflet are subject to change without notice. Philips does not accept any liability as to the contents of this leaflet.

Cutting system

Precision (size of steps)	From 0.2mm
Cutting element	Stainless steel blades
Non-scratching teeth	For more comfort

Create the look you want

Number of length settings	17 integrated length settings
---------------------------	-------------------------------

Accessories

Comb	Integrated hair lift comb Long hair comb Short hair comb
Maintenance	Cleaning brush

Ease of use

Cleaning	Fully washable
Zoom wheel	Easily adjust length settings

Display
Operation

Battery light
Corded & Cordless use

Design

Finishing
Handle

Chrome finish
Soft touch handle

Power

Run time
Charging
Automatic voltage

70 minutes
1 hour full charge
100-240 V

Service

2-year warranty
No oil needed

Yes
Plus 3-years with registration
Yes

* Versus its Philips predecessor



data subject to change
2019, May 23

Version: 5.2.1
UPC: 00075020049766

© 2019 Koninklijke Philips N.V.
All rights reserved.

Specifications are subject to change without notice. Trademarks are the property of Koninklijke Philips N.V. or their respective owners.

www.philips.com