

PHILIPS

Wet & Dry epilator

Epilator Series 8000

For legs, body and feet

Powerful epilation

+ 9 accessories



BRE740/11



Powerful epilation. Gentle on skin

Smooth skin for up to 4 weeks

Philips Epilator Series 8000 boasts powerful yet gentle epilation so you can achieve smoothness on your both lower legs in as little as 10 minutes. Enjoy benefits beyond just epilation with a full routine set.

Exceptional results

- Gentle epilation for smooth skin up to 4 weeks
- Extra wide epilator head
- Shaving head and trimming comb for a close shave
- Includes trimming head and bikini comb
- Delicate area cap to remove unwanted hairs
- Optimal contact cap for maximum comfort

Full routine beyond epilation

- Body exfoliation brush removes dead skin cells
- Pedicure foot file with rotating disc for satin smooth feet

Easy and effortless usage

- Ergonomic S-shaped handle
- Cordless wet and dry for use in bath or shower
- Unique light ensures you don't miss fine hairs
- Pouch included to store everything in one place.

Highlights

Powerful and gentle epilation



Philips Epilator Series 8000 boasts powerful yet gentle epilation with its improved tweezers and over 70,000 hair-catching actions per minute. This means you can cover more skin and achieve flawless smoothness for up to 4 weeks. Treat your lower legs in as little as 10 minutes!

Extra wide epilator head



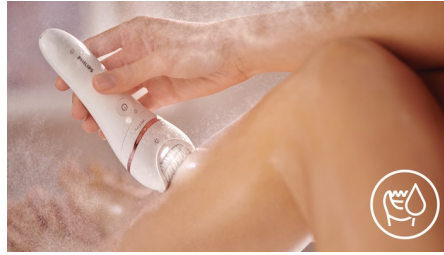
Extra wide epilator head covers more skin with every stroke for faster hair removal.

Award-winning design*



The ergonomic S-shaped handle is easy to steer for maximum control and better reach with natural and precise movements, all over your body.

Cordless wet and dry usage



Designed with an anti-slip grip, ideal for use with water. Enables a more comfortable, gentle experience in your shower or bath. You can use it cordless for best convenience.

Opti-light



Unique light ensures you don't miss fine hairs for best epilation results for all body parts.

Shaving head and trimming comb



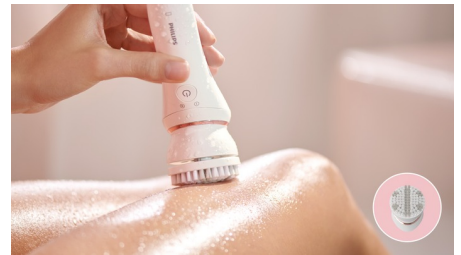
The shaving head provides a close shave and more gentleness in different body areas. It comes with a trimming comb to style your bikini area.

Trimming head and bikini comb



It includes a trimming head and bikini comb to trim and shape your intimate areas for more convenience.

Body exfoliation brush



Our body exfoliation brush removes dead skin cells and helps to prevent ingrown hairs. The hypo-allergenic 48,200 fine bristles gently yet effectively sweep away dead skin cells & stimulate the regeneration of the skin surface. This device will exfoliate your skin more effectively than manual treatment alone.

Pedicure foot file



Our 3-in-1 rotating precision disc gives you heel-to-toe smoothness in just 5 minutes. Use the flat surface for larger areas, the top for smaller areas and the curved side for hard-to-file areas. It's that easy.

Specifications

Accessories

Shaving head
Trimming comb
Bikini trimmer head
Bikini trimmer comb
Body Exfoliation Brush
Pedicure foot file
Delicate area cap
Optimal contact cap
Pouch: Basic pouch
Cleaning brush

Performance

Epilator head: Extra wide
Epilation discs: Ceramic discs

Ease of use

Wet and dry use
Cordless
Opti-light
Handle: S-shape handle

Technical specifications

Voltage: 15V / 5.4W
Tweezing action speed 1: 64000 per minute
Tweezing action speed 2: 70400 per minute
Number of tweezers: 32

Features

Speed settings: 2 settings

Power

Battery Type: Lithium-ion
Usage time: up to 40 minutes
Charging: 2 hours charge
Quick charge

