

# PHILIPS

Wet & Dry epilator

Epilator Series 8000

For legs, body and feet

Powerful epilation

+ 9 accessories



BRE740/10



## Powerful epilation. Gentle on skin

Smooth skin for up to 4 weeks

Philips Epilator Series 8000 boasts powerful yet gentle epilation so you can achieve smoothness on your both lower legs in as little as 10 minutes. Enjoy benefits beyond just epilation with a full routine set.

### Exceptional results

- Gentle epilation for smooth skin up to 4 weeks
- Extra wide epilator head
- Shaving head and trimming comb for a close shave
- Includes trimming head and bikini comb
- Delicate area cap to remove unwanted hairs
- Optimal contact cap for maximum comfort

### Full routine beyond epilation

- Body exfoliation brush removes dead skin cells
- Pedicure foot file with rotating disc for satin smooth feet

### Easy and effortless usage

- Ergonomic S-shaped handle
- Cordless wet and dry for use in bath or shower
- Unique light ensures you don't miss fine hairs
- Pouch included to store everything in one place.

# Highlights

## Powerful and gentle epilation



Philips Epilator Series 8000 boasts powerful yet gentle epilation with its improved tweezers and over 70,000 hair-catching actions per minute. This means you can cover more skin and achieve flawless smoothness for up to 4 weeks. Treat your lower legs in as little as 10 minutes!

## Extra wide epilator head



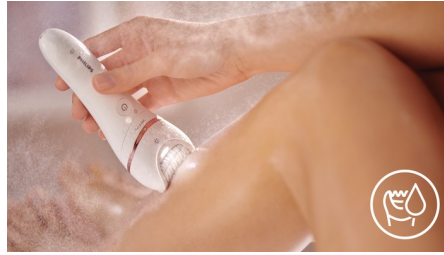
Extra wide epilator head covers more skin with every stroke for faster hair removal.

## Award-winning design\*



The ergonomic S-shaped handle is easy to steer for maximum control and better reach with natural and precise movements, all over your body.

## Cordless wet and dry usage



Designed with an anti-slip grip, ideal for use with water. Enables a more comfortable, gentle experience in your shower or bath. You can use it cordless for best convenience.

## Opti-light



Unique light ensures you don't miss fine hairs for best epilation results for all body parts.

## Shaving head and trimming comb



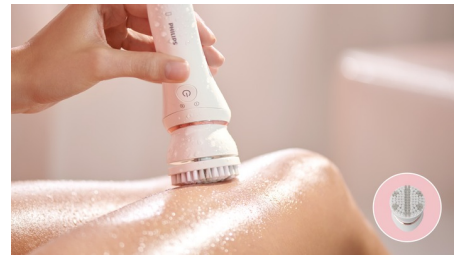
The shaving head provides a close shave and more gentleness in different body areas. It comes with a trimming comb to style your bikini area.

## Trimming head and bikini comb



It includes a trimming head and bikini comb to trim and shape delicate areas for more convenience.

## Body exfoliation brush



Our body exfoliation brush removes dead skin cells and helps to prevent ingrown hairs. The 48,200 hypo-allergenic, fine bristles gently yet effectively sweep away dead skin cells and stimulate the regeneration of the skin surface. This device will exfoliate your skin more effectively than manual treatment alone.

## Pedicure foot file



Our 3-in-1 rotating precision disc gives you heel-to-toe smoothness in just 5 minutes. Use the flat surface for larger areas, the top for smaller areas and the curved side for hard-to-file areas. It's that easy.

# Specifications

## Accessories

Shaving head  
Trimming comb  
Bikini trimmer head  
Bikini trimmer comb  
Body Exfoliation Brush  
Pedicure foot file  
Delicate area cap  
Optimal contact cap  
Pouch: Basic pouch  
Cleaning brush

## Performance

Epilator head: Extra wide  
Epilation discs: Ceramic discs

## Ease of use

Wet and dry use  
Cordless  
Opti-light  
Handle: S-shape handle

## Technical specifications

Voltage: 15V / 5.4W  
Tweezing action speed 1: 64000 per minute  
Tweezing action speed 2: 70400 per minute  
Number of tweezers: 32

## Features

Speed settings: 2 settings

## Power

Battery Type: Lithium-ion  
Usage time: up to 40 minutes  
Charging: 2 hours charge  
Quick charge

