

PHILIPS

Hair Styling Set

3000 Series

1600W

ThermoProtect attachment

Keratin-infused plates



BHP398/00



Styling made easy

The uniquely-designed ThermoProtect attachment powerfully mixes warm and cool air for everyday care.

Care and protect

- ThermoProtect attachment

Powerful drying

- 1600W of drying power
- Cool air setting to finish your style

Beautifully styled hair

- Keratin infusion for better care
- 210°C professional temperature for perfect salon results

Easy to use

- Foldable handle for easy storage
- 3 heat and speed settings
- Slim nozzle for touch-ups and detailed styling
- Fast heat up time, ready to use in 60 seconds
- Cool Tip to easily create curls and waves
- A useful swivel cord rotates and prevents tangled wires

Highlights

1600W of drying power

This 1600W hair dryer creates the optimum level of airflow, for beautiful results every day.

ThermoProtect attachment

The uniquely-designed ThermoProtect attachment powerfully mixes warm and cool air for everyday care. It drops the temperature by 15°C while still drying your hair quickly.

Foldable handle

The compact design with foldable handle makes it easy to pack, store and take the hair dryer with you anywhere you go.

3 heat and speed settings

This hairdryer offers 3 preselected heat/speed combinations, making it quick and easy to achieve the perfect style.

Cool air setting

The cool air setting provides a burst of cold air to finish and hold your style.

14 mm styling nozzle

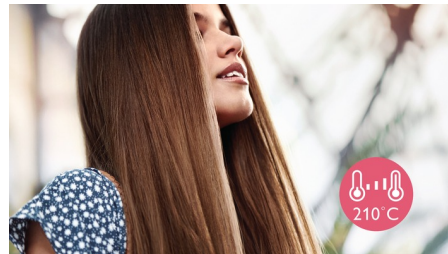
The slim nozzle precisely focuses the air, for quick touch-ups and perfecting small details of your style.

Keratin infusion



Keratin is the hair's essential ingredient which makes them strong, healthy and gorgeous looking. The ceramic is enriched with keratin to even better take care of your hair.

210°C styling temperature



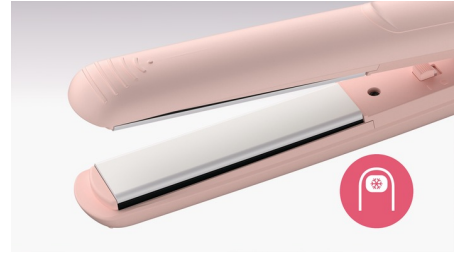
This styling temperature enables you change the shape of your hair, and gives you that perfect look like you've just come from the salon.

Rapid heat-up



The straightener has a fast heat-up time, being ready to use in 60 seconds.

Cool Tip



The tip of the styler is made from a special heat insulating material to keep it cool. You can safely hold it while you're curling to create beautiful curls, waves and bouncy styles.

Swivel cord



The swivel cord technology conveniently rotates the cord and prevents unnecessary tangles.

Specifications

Caring technologies

ThermoProtect

Hair Dryer

Foldable handle

Heat/speed settings: 3

Settings: Cool air setting

Motor: DC

Hanging loop

Cord length: 1.8 m

Voltage: 220-240 V

Wattage: 1600 W

Attachments

Nozzle: 14 mm

ThermoProtect attachment

Straightener

Material plates: Keratin-infused ceramic plates

Plate size: 19x85 mm

Heat-up time: 60 sec

Swivel cord

Cord length: 1.6 m

Voltage: 110-240 V

Wattage: 31-33 W

Service

2-year worldwide warranty

