

PHILIPS

Multi-Styler

StyleCare

15+ styles in a box

15 attachments & accessories

Style Guide

OneClick Technology



BHH822/00



More styles on demand

15 attachments and style guide for various looks

Every day a different look! From perfectly polished, straight, volumized, curly hair to updos and more, create more than 15 styles with the new Philips Multi-Styler with style guide.

Beautifully styled hair

- 80mm straightener for sleek results
- 25mm curling barrel for tight to loose curls
- 32mm hot brush for luxurious volume
- Style guide and 11 useful hair accessories for 15+ styles

Ease of use

- OneClick Technology for quick and easy attachment changing
- 160°C to 210°C styling temperature settings
- Fast heat up time, ready to use in 45 sec
- LED indicator for styling with optimal temperature
- Auto shut-off for safe usage
- 1.8 m power cord
- Swivel cord to prevent tangled wires

Care for your hair

- Protective ceramic coating



asimpleswitch.com

Highlights

Straightener for sleek results



80mm straightening plates for perfect sleek results.

Curler for fabulous curls



25mm curling barrel for perfect tight to loose curls.

Hot brush for luxurious volume



Simply brush your hair for creating perfectly voluminous results.

11 versatile hair accessories



Including a style guide and all accessories you need to create 15+ styles! The style kit includes 2 elastic bands, 4 elastic mini

scrunchies, a hair clip and 4 bobby pins, a comb and 2 spiral grips for easy hairstyling. A hair loop, pull hair pin, hair grip, banana clip and a side comb will enable you to experiment and create fabulous styles!

OneClick release technology



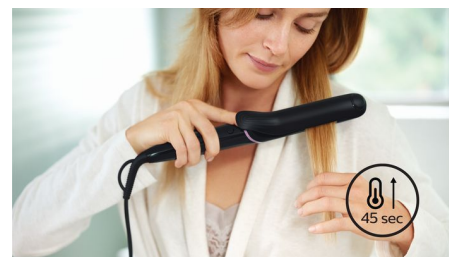
Changing attachments has never been quicker or easier with the multi-styler's OneClick design. Simply click on and push the button, holding the cool tip, to release.

2 temperature settings



2 temperature settings for perfect results. Choose from a professional high temperatures for straightening to achieve long lasting results while caring for your hair.

Fast heat up time



This styler has a fast heat up time, being ready to use in 45 seconds.

Ready to style indicator



The ready to use indicator shows when the styler has reached the right temperature. The soft, white LED light changes from a soft pulse to constant to easily show when it's ready for use.

Gentle on your hair



Protective ceramic coating ensures even heat distribution and less hair damage for shiny and soft hair.



asimpleswitch.com

Philips Green Logo

Philips Green Products can reduce costs, energy consumption and CO2 emissions. How? They offer a significant environmental improvement in one or more of the Philips Green Focal Areas – Energy efficiency, Packaging, Hazardous substances, Weight, Recycling and disposal and Lifetime reliability.

Specifications

Attachments

Curler
Straightener
Hot brush

Accessories

Style guide: with 15 easy to create styles
Elastic band: 2
Hair loop
Hair clips
Hair pins: 4
Banana clip
Elastic mini scrunchy: 4
Spiral grip: 2
Comb

Hair grip
Pull hair pin
Side comb

Features

Coating of heated parts: Ceramic
Barrel diameter: Curler 25 mm
Barrel diameter: Heated brush 32mm
Straightener size: 30x80 mm
Cool tip
Swivel cord
Storage hook
OneClick release technology

Technical specifications

Heat settings: 2
Styling temperature: 180°C - 210°C
Heater type: PTC
Heat-up time: 45 sec
Cable length: 1.8 m
Plate size: Curler 90 mm, Heated brush 90 mm
Voltage: 110-240V

Service

2-year worldwide guarantee

