

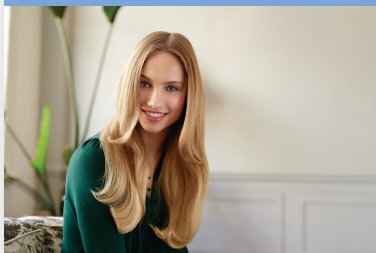
PHILIPS

Energy efficient
hairdryer

DryCare Essential

DryCare Essential

Ionic



BHD029/03



Dry fast, consume less energy

Philips DryCare Essential, has an innovative fan design reaching a drying performance comparable to a 2100W dryer, with only 1600W energy use.*

Beautifully styled hair

- 2100W drying performance with 1600W energy use
- Ionic conditioning for shiny, frizz-free hair
- Cool Shot sets your style
- 3 heat and 2 speed settings for full control
- 12mm concentrator for smooth focused airflow

Less hair damage

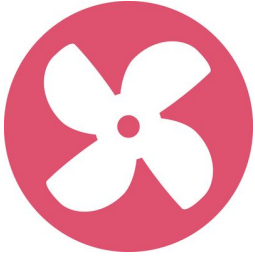
- Less overheating with Even Heat Distribution
- ThermoProtect temperature setting

Easy to use

- 1.8m cord for maximum flexibility
- Easy storage hook for convenient storage

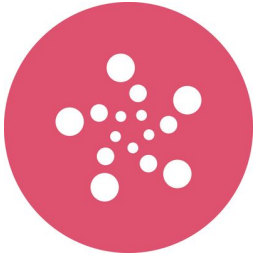
Highlights

PowerSmart airflow technology



The new fan design allows you to reach a drying performance comparable to a 2100W dryer (drying rate of approximately 5g/min) with only 1600W energy use. This is equivalent to 23% energy saving*

Ionic conditioning



Give your hair instant care with ionic conditioning. Charged negative ions eliminate static, condition your hair, and smooth the hair cuticles to intensify hair's shine and glossiness. The result is smooth and frizz-free hair with beautiful shine.

Even Heat Distribution



The Even Heat Distribution feature, means that your dryer uses an uniquely designed air outlet to ensure heat is always distributed evenly on your hair while you dry- even at high temperatures - and prevents the formation

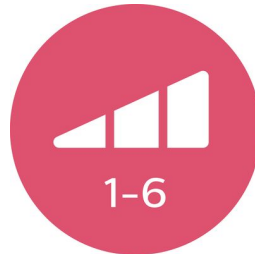
of damaging hot spots. This gives ultimate protection to the hair from overheating helping to keep your hair healthy and shiny.

Cool Shot sets your style



A must-have professional setting, the Cool Shot provides a burst of cold air. Use after styling to set and finish your style.

Accurate control



Easily set and control the heat and speed settings to create the perfect style. Choose from 3 heat and 2 speed settings for full control and precise drying and styling

12mm concentrator



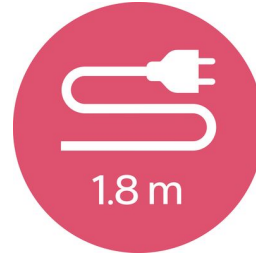
The 12mm concentrator focuses the flow of air for precision styling. Great for touch ups or to set your style.

ThermoProtect temperature



The ThermoProtect temperature setting provides the optimal drying temperature and gives additional protection from overheating the hair. With the same powerful airflow, you will get the best results in a caring way.

1.8m cord



1.8m cord.

Easy storage hook



A rubberized hook can be found on the base of the handle. Use to store easily at home or if staying at a hotel.

Specifications

Features

Nozzle / Concentrator
Number of attachments: 1
Hanging loop
Cool Shot
Ionic conditioning

Service

2-year guarantee

Technical specifications

Frequency: 50-60 Hz
Power: 1600 W
Motor: DC Motor
Cord length: 1.8 m
Voltage: 220-240 V

