

# PHILIPS

## NORELCO

Showerproof body  
groomer

Bodyroom 3500

Skin friendly shaver

3 click-on trimming guards

60mins cordless use/1h charge

Back attachment



BG5025/49



## Full-body trim & shave

### Extended reach for your back

The Bodyroom 3500 is designed to efficiently trim and shave body hair, without compromise on skin comfort. Offers versatile groom options, with trim guards in three lengths and an extra-long back attachment for hard to reach areas.

#### Skin-friendly performance

- Confidently trim or shave all body zones
- Rounded tips and hypoallergenic foil for skin comfort
- Included trimming guards: 1/8" (3mm), 3/16" (5mm), 9/32" (7mm)

#### Easy to use

- Extra-long back attachment for extended reach
- 60 minutes cordless use after an 1-hour charge
- Easy to use and clean, while wet or dry
- Ergonomic grip for maximum control

#### Built to last

- 2 year warranty, worldwide voltage, no oil needed



asimpleswitch.com

# Highlights

## Full body grooming



Designed as a safe and comfortable grooming solution for back, shoulders, chest, abs, underarms, arms, groin area and legs. The bi-directional trim guards cut longer hairs with three length options, and the skin-friendly shaver gets an even closer result.

## Skin-friendly body shaver



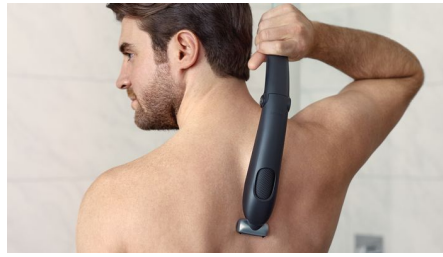
Blades have rounded tips for smooth skin contact. Designed to prevent nicks and cuts, the innovative shaver head captures long, short and thick hairs in a single stroke.

## Bi-directional trimming guards



Efficiently trim hair in either direction with included guard attachments: 1/8"(3mm), 3/16"(5mm), 9/32"(7mm). For a closer result, use the shaver alone. For thicker hair, it's recommended to trim first and then shave.

## Extra-long back attachment



Now easier to shave your back. Attachment can be folded for convenient storage.

## Advanced lithium-ion battery



Advanced lithium-ion battery delivers maximum power for high performance cutting. Longer lasting run-time than any other rechargeable battery. Up to 60 minute run time. Fully charges in 1 hour. The battery light indicates power status, when the battery is low or full.

## Showerproof



Provides a comfortable and close result in or out of the shower. The body groomer is fully water-resistant, so you can simply rinse it clean when you've finished. Trimming performance may be better on dry hair, as wet hair tends to stick to the body.

## Ergonomic grip



The rubber grip is designed to ensure optimal handling and better control during use, while wet or dry.

## Built to last



All of our grooming products are built to last. They come with a 2 year worldwide warranty, worldwide voltage compatibility, and they never need to be oiled.



[asimpleswitch.com](http://asimpleswitch.com)

## Philips Green Logo

Philips Green Products can reduce costs, energy consumption and CO2 emissions. How? They offer a significant environmental improvement in one or more of the Philips Green Focal Areas – Energy efficiency, Packaging, Hazardous substances, Weight, Recycling and disposal and Lifetime reliability.

# Specifications

## Cutting system

**Cutter width:** 32 mm

**Shaving element:** Foil with two pre-trimmers

**Skin comfort:** Skin comfort system, Comfort in sensitive areas

## Create the look you want

**Number of length settings:** 3 fixed length settings

## Accessories

**Comb:** 3 body guards (3, 5, 7 mm)

**Back handle attachment**

## Power

**Battery type:** Lithium-ion

**Run time:** 60 minutes

**Charging:** 1 hour full charge

## Ease of use

**Wet & Dry:** Fully washable, Showerproof and easy cleaning

**Secured length settings**

**Operation:** Cordless use

**Maintenance free:** No oil needed

## Design

**Handle:** Ergonomic grip & handling

## Service

**2-year worldwide warranty**

