

Philips
LCD monitor

140 cm (55")
Autostereoscopic 3D
Full HD

BDL5571VS



Experience 3D with stunning depth

and 28 lenticular views

Broadcast your marketing messages in style with the slim bezel 140 cm (55") LCD display. An amazing 3D experience without glasses awaits, bringing a new level of cool to your marketing messages.

Stunning 3D experience

- 3D content visualization
- 3D & 2D dual mode display
- 3D system solution

Operational flexibility

- Autostereoscopic 3D
- 120 Hz Panel
- Many Functions. One Wire
- Display Port for faster graphics support
- Network Controllability: RJ45
- Module for DVI out capabilities
- Smart insert in the backcover to place a small pc

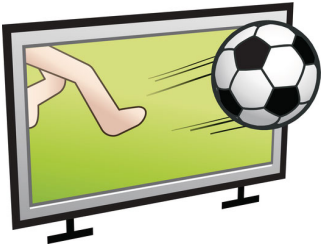
Optimized for public viewing

- Full HD LCD display, 1920x1080p
- Slim bezel design for a stylish look

PHILIPS

Highlights

Autostereoscopic 3D



Enjoy a stunning 3D experience with no need for special glasses thanks to the autostereoscopic 3D effect. Using lenticular technology, it gives excellent clarity and depth, making your 3D experience even more lifelike and enjoyable.

3D content visualization

Software tools are provided with the display to play-out 3D content and control the 3D and 2D visualization parameters. The actual 3D content can be created via plug-ins available for popular 3D animation software packages. Existing 2D or stereo content can be converted into 2D-plus-Depth format. The 2D-plus-Depth format is compatible with existing compression tools, as the additional bandwidth of the depth is small.

3D & 2D dual mode display

The display can be applied in a broad range of applications since it can be operated in in both 2D and 3D mode. The 4K UHD resolution panel enables great picture quality and true color representation in 2D and 3D mode. The integrated rendering core offers content creators and end-users full control over the quality and depth-effect characteristics of the picture.

3D system solution

The system solution is designed for maximum reuse of content / concepts from the 2D signage industry. The key enabler for this is the flexible 2D-plus-Depth format that allows decoupling of content creation and content visualization. The rendering core integrated in the autostereoscopic 3D displays supports the unique Declipse image format which enables a true look-around 3D effect.

Optional DVI Module

Create a digital video wall of up to 9 displays in a 3 x 3 configuration with the optional DVI module. Simply slide the module in to the open slot on the side of the display, then connect the DVI out port to a DVI in of another display to create the most stunning video wall experience around.

120 Hz Panel

Enjoy stunningly clear video images thanks to the 120 Hz panel. Even fast moving action scenes can be seen with no blur, enhancing your viewing experience.

Smart Insert

Professional PC's are part of most public signage installations. Quite often they increase the overall depth to the display and cause a lot of cable clutter. So we have designed this display with Smart insert in the back cover which is ideal for the integration of a professional small form factor PC. On top of that, the cable management system offers a great solution to keep your cables neat and professional looking.

One Wire

Take full control of your display by running all operational commands as well as your video signal through just one single HDMI cable. This unique feature makes it so much easier and more convenient to ensure the smooth running and maintenance of your display. Consumer Electronics Control (CEC) commands make finding out vital information about your display absolute childsplay.

RJ45

Simple management of your display is available thanks to the introduction of a LAN (RJ45) port. You can configure each display or find out the status of each device quickly and conveniently via an RJ45 connection.

Slim bezel

A slim bezel design adds a stylish look to a public display to nicely blend in just about any environment. Furthermore this design makes the display ideal for tiled matrix video walls.

Full HD LCD display 1920x1080p

This display has a resolution that is referred to as Full HD. The state-of-the-art LCD screen technology has the full high-definition widescreen resolution of 1080 progressive lines, each with 1920 pixels. This allows the best possible picture quality for HD input signals with up to 1080 lines. It produces brilliant flicker-free progressive scan pictures with optimum brightness and superb colors. This vibrant and sharp image will provide you with an enhanced viewing experience.



Specifications

Picture/Display

- Diagonal screen size: 55 inch / 140 cm
- Panel resolution: 1920x1080p
- Optimum resolution: 1920 x 1080 @ 60Hz
- Brightness: 700 cd/m²
- Contrast ratio (typical): 1300:1
- Response time (typical): 10 ms
- Aspect ratio: 16:9
- Viewing angle (H / V): 150 / 150 degree
- Display colors: 1.06 Billion colors
- Picture enhancement: 3/2 - 2/2 motion pull down, 3D Combfilter, Motion compens. deinterlacing, Progressive scan, 3D MA deinterlacing, Dynamic contrast enhancement
- Display technology: 120 Hz Panel
- Pixel pitch: 0.63 x 0.63 mm
- 3D Technology: Autostereoscopic 3D display, Fixed Lenticular 3D Technology, Input Format: 2D plus depth

Connectivity

- PC: VGA-in D-Sub 15HD, VGA-out D-Sub 15HD, DVI-D x1, RS232 D-Sub9, RS232 D-sub9 output, 3.5 mm PC audio input x1, RJ45
- AV input: HDMI x1, Audio (L/R) x2, Component (BNC) x1
- AV output: Audio (L/R) x1
- Other connections: Display Port, AC-out, External loudspeaker connector

Convenience

- Placement: Landscape
- Picture in picture: PBP, PIP, POP
- Screen saving functions: Pixel shift, Low bright
- Signal Loop Through: RS232, VGA, DVI (Optional)
- Keyboard control: Hidden, Lockable
- Remote control signal: Lockable
- Ease of installation: AC Out, Carrying Handles, Smart Insert
- Energy saving functions: Ambient light sensor, Smart Power
- Safety control functions: Heat Control, Temperature Sensor
- Picture performance: Advanced color control
- Packaging: Reusable box
- Network controllable: RS232, RJ45

Dimensions

- Bezel thickness: 19.5mm/0.8"
- Smart Insert mount: 300 x 320 x 64
- Smart insert in inch (WxHxD): 11.81 x 11.89 x 2.52
- Set dimensions (W x H x D): 1252.1 x 722.9 x 121.8 mm

- Set dimensions in inch (W x H x D): 49.3 x 28.5 x 4.8 inch
- Set dimensions with stand (H x D): 773.2 x 405.1 mm
- Set dimensions with stand in inch (H x D): 30.4 x 15.95 inch
- Product weight: 80 kg
- Product weight (lb): 176 lb
- VESA Mount: 400x400mm (Set), 100x100mm (Smart insert)

Operating conditions

- Temperature range (operation): 0 - 40 °C
- Relative humidity: 5 - 90 %
- MTBF: 60,000 hour(s)

Power

- Consumption (On mode): Typ. 214W
- Standby power consumption: < 1W (One Wire and RS232 active)

Sound

- Built-in speakers: 2 x 12 W (8 ohm)

Accessories

- Included accessories: Remote Control, Batteries for remote control, AC Power Cord, VGA cable, User manual on CD-ROM, Quick start guide, 3D software

Miscellaneous

- Warranty: Europe/North America: 1 year
- On-Screen Display Languages: English, French, German, Italian, Polish, Turkish, Russian, Simplified Chinese
- Regulatory approvals: CE, RoHS

Packaging dimensions

- Packaging dimensions (W x H x D): 167 x 105 x 30 cm
- EAN: 87 12581 62642 6
- Gross weight: 42.3 kg
- Nett weight: 38.7 kg
- Number of products included: 1
- Packaging type: Carton
- Tare weight: 3.6 kg

Product dimensions

- Product dimensions (W x H x D): 125 x 72.29 x 12.3 cm
- Product dimensions with stand (H x D): 102.2 x 42.3 cm
- Weight: 26.4 kg
- Weight (with stand): 55.5 kg



Issue date 2019-05-08

Version: 7.3.2

12 NC: 8670 000 85083
EAN: 87 12581 62642 6

© 2019 Koninklijke Philips N.V.
All Rights reserved.

Specifications are subject to change without notice.
Trademarks are the property of Koninklijke Philips N.V.
or their respective owners.

www.philips.com