



Philips Signage Solutions
Q-Line Display

43"

Direct LED Backlight
Full HD

SignageSolutions

BDL4330QL

Stand out

Easy-setup 16/7 display.

Inform and enthrall with a Philips Q-Line professional Full HD display. This reliable solution can be up and running as quickly as you need-with no additional hardware.

Brilliant picture. Reliable performance

- Full HD. Clear images. Crisp contrast

Effortless setup. Total control.

- CMND: Drag-and-drop system management
- CMND & Control. Operate, monitor, maintain
- CMND & Create. Develop and launch your own content

Cost-effective system solution

- Energy-saving automatic backlight control
- Integrated media player. Easily schedule USB content
- Simple control. Remotely manage networked displays
- Internal memory. Upload content for instant play

Highlights

CMND

Take control of your Philips Professional Display network. CMND lets you manage, update, maintain, and play via one easy-to-use interface. From installation to daily operation.

CMND & Control



Run your display network over a local (LAN) connection. CMND & Control allows you to perform vital functions like controlling inputs

and monitoring display status. Whether you're in charge of one screen or 100.

CMND & Create

Take control of your content with CMND & Create. A drag-and-drop interface makes it simple to publish your own content-whether it's a daily specials board or branded corporate information. Preloaded templates and integrated widgets ensure your stills, text, and video will be up and running in no time.

Integrated media player

Easily schedule content to play from USB, internal memory, local network, or via the

Internet. Your Philips Professional Display will wake from standby to play the content you want, and then return to standby once playback is done.

Internal memory

Save and play content without the need for a permanent external player. Your Philips professional display has an internal memory, which allows you to upload media into the display for instant playback. The internal memory also functions as a cache for online streaming.

SmartCollection

SmartCollection

SmartCollection offers you customizable solutions to meet your specific requirements.

Both integrators and solution providers are offered the latest innovations, while the audience can enjoy impactful solutions. When developing smart innovations we focus on Caring, Innovative and Impactful solutions.

Specifications

Picture/Display

- Diagonal screen size: 42.5 inch / 108 cm
- Panel resolution: 1920x1080p
- Optimum resolution: 1920 x 1080 @ 60 Hz
- Brightness: 350 cd/m²
- Contrast ratio (typical): 3000:1
- Dynamic contrast ratio: 500,000:1
- Response time (typical): 6.5 ms
- Aspect ratio: 16:9
- Viewing angle (H / V): 178 / 178 degree
- Pixel pitch: 0.49 x 0.49 mm
- Display colors: 16.7 Million
- DICOM: Clinical D-image

Supported Display Resolution

Computer formats

Resolution	Refresh rate
640 x 480	60, 67, 72, 75Hz
800 x 600	56, 60, 72, 75Hz
1024 x 768	60Hz
1280 x 768	60Hz
1280 x 800	60Hz
1360 x 768	60Hz
1366 x 768	60Hz
1440 x 900	60Hz
1920 x 1080	60Hz

Video formats

Resolution	Refresh rate
480i	60Hz
480p	60Hz
576p	50Hz
576i	50Hz
720p	50, 60Hz
1080i	50, 60Hz
1080p	50, 60Hz

Connectivity

- Video input: DVI-D, HDMI, Component (RCA), Composite (RCA), VGA (Analog D-Sub)
- Audio input: 3.5 mm jack, Audio Left/Right (RCA)
- Audio output: Audio Left/Right (RCA), 3.5mm jack
- External control: RJ45, RS232C (in/out) 2.5 mm jack, IR (in/out) 3.5 mm jack
- Other connections: USB

Convenience

- Memory: Internal memory access, 8GB eMMC
- Screen saving functions: Pixel Shift
- Energy saving functions: Smart Power
- Tiled Matrix: Up to 15 x 15

- Start-up: Switch on delay, Switch on status, Wake up on LAN
- Start-up window: enable / disable Philips logo
- Keyboard control: Lockable, Hidden
- Network controllable: RS232, RJ45, One Wire (HDMI-CEC)
- Signal Loop Through: RS232, IR Loophthrough

Dimensions

- Bezel width: 11.9 (TLR) / 14.9 (B) mm
- Set dimensions (W x H x D): 968.2 x 559.4 x 59.9 mm
- Set dimensions in inch (W x H x D): 38.12 x 22.02 x 2.36 inch
- VESA Mount: 400 x 400mm, 200x200 mm,M6
- Product weight: 8.70 kg
- Product weight (lb): 19.18 lb

Operating conditions

- Temperature range (operation): 5 ~ 40 °C
- Temperature range (storage): -20 ~ 60 °C
- Relative humidity: 20 ~ 80 %
- MTBF: 50,000 hour(s)

Power

- Consumption (On mode): 87 W (EnergyStar 6.0 test method)
- Mains power: 100 ~ 240 VAC
- Standby power consumption: <0.5 W

Sound

- Built-in speakers: 2 x 10W RMS

Multimedia Applications

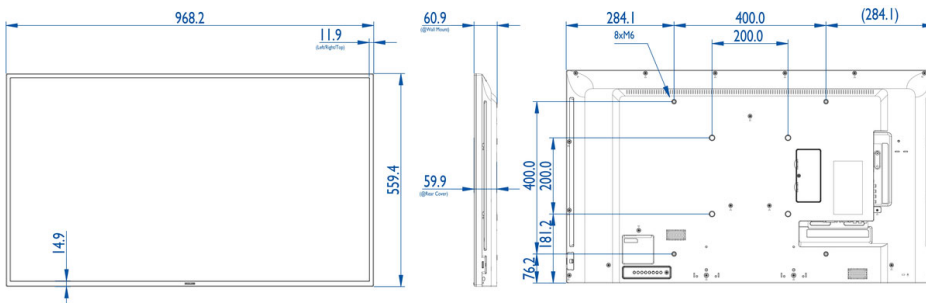
- USB Playback Video: 3G2, 3GP, ASF, ASX, AVI, DAT, DivX, F4V, FLV, M2TS, M4V, MK3D, MKV, MOV, MP4, MPE, MPEG, MPG, MTS, QT, TRP, TS, TTS, VOB, WEBM, WMV, Xvid
- USB Playback Picture: BMP, GIF, JPEG, JPG
- USB Playback Audio: AAC, AC3, AIF, AIFF, AMR, EC3, M4A, MP3, OGA, OGG, WAV, WMA

Accessories

- Included accessories: AC Power Cord, RS232 cable, VGA cable, Remote Control, Batteries for remote control, User manual on CD-ROM, Quick start guide

Miscellaneous

- Warranty: 3 year warranty



Issue date 2019-05-26

Version: 2.1.1

12 NC: 8670 001 22319
EAN: 87 12581 73030 7

© 2019 Koninklijke Philips N.V.
All Rights reserved.

Specifications are subject to change without notice.
Trademarks are the property of Koninklijke Philips N.V.
or their respective owners.

www.philips.com