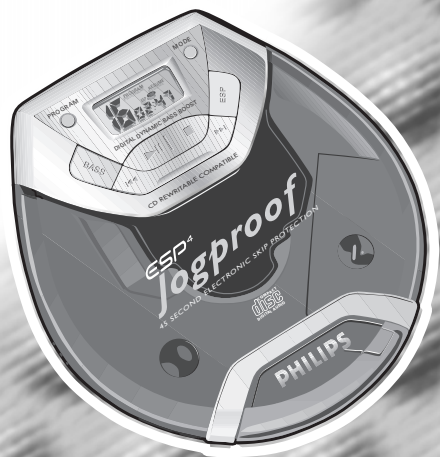


Portable CD player

AX2000 AX2011
AX2001 AX5000
AX2002 AX5001
AX2003 AX5011
AX5013



Let's make things better.



PHILIPS

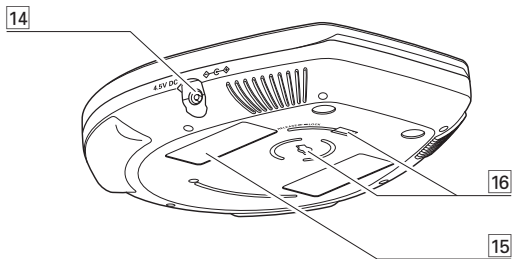
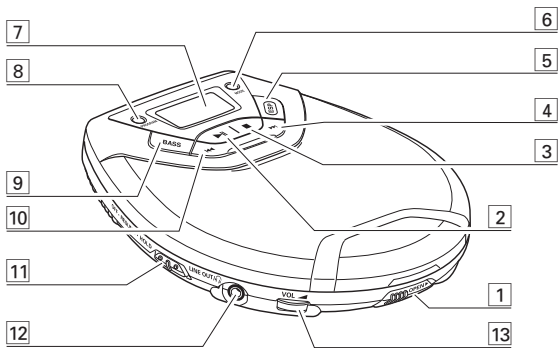
Es necesario que lea cuidadosamente su instructivo de manejo.

	PRECAUCIÓN - ADVERTENCIA No abrir, riesgo de choque eléctrico	
	ATENCIÓN Verifique que el voltaje de alimentación sea el requerido para su aparato	
Para evitar el riesgo de choque eléctrico, no quite la tapa. En caso de requerir servicio, dirijase al personal calificado.		

Descripción:	Tocadiscos de CD portatil
Modelo:	AX 2000/01, /11, /16, AX 2001/01, /11, /16, AX 2002/01, /11, /16, AX 2003/01, /11, /16, AX 2011/01, /11, /16, AX 5000/01, /11, /16 AX 5001/01, /11, /16, AX 5011/01, /11, /16 AX 5013/01, /11, /16
Alimentación:	110-127/220-240 V~ 50-60 Hz
Consumo:	4 W (AY 3170)
Importador:	Philips Mexicana, S.A. de C.V.
Domicilio:	Norte 45, # 669, Col. Industrial Vallejo
Localidad y Telefono:	C.P. 02300 México D.F., Tel. 5728 4200
Exportador:	Philips Electronics Hong Kong, Ltd.
País de Origen:	China

Nº de Serie: _____

**LEA CUIDADOSAMENTE ESTE INSTRUCTIVO
ANTES DE USAR SU APARATO.**



English

Controls	6	CD play	12–13
Quick start	7	Features	14–18
Power supply	8–10	In-car connection	19
General information	10–11	Troubleshooting	20–21

English

Français

Commandes	22	Lecture CD	28–29
Mise en service rapide	23	Caractéristiques	30–34
Alimentation électrique	24–26	Raccordement en voiture	35
Informations générales	26–27	Pannes et remèdes	36–37

Français

Español

Controles	38	Reproducción de un CD	44–45
Encendido rápido	39	Características	46–50
Alimentación eléctrica	40–42	Conexión al automóvil	51
Información general	42–43	Localización de averías	52–53

Español

中文

Controls	54	CD play	60–61
Quick start	55	Features	62–66
Power supply	56–58	In-car connection	67
General information	58–59	Troubleshooting	68–69

中文

Guarantees

Polizia de garanția

Mexico

70–71

Philips product warranty for

Australia

Guarantee and service for

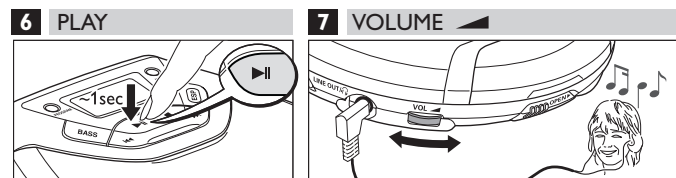
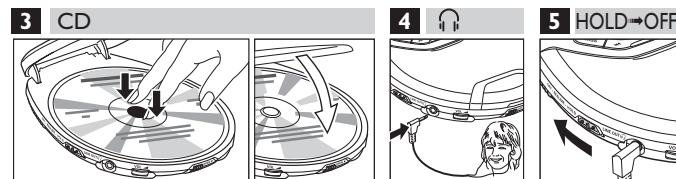
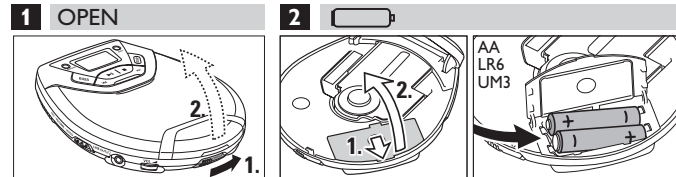
New Zealand

74

CONTROLS, refer to the illustration on page 3

QUICK START

- 1] OPEN ►.....opens the CD lid
- 2] ►||.....switches the player on, starts or pauses CD play
- 3] ■.....stops CD play, clears a program or switches the player off
- 4] ►.....skips and searches CD tracks forwards
- 5] ESP.....**ELECTRONIC SKIP PROTECTION** ensures continuous CD playback regardless of vibrations and shocks
- 6] MODE.....selects the different playing possibilities: **SHUFFLE**, **SHUFFLE REPEAT ALL**, **REPEAT**, **REPEAT ALL** and **SCAN**
- 7]display
- 8] PROGRAM.....programs tracks and reviews the program
- 9] BASS.....switches the bass enhancement on and off. This button also switches acoustic feedback (the beep) on/off when it is pressed for more than 2 seconds
- 10] ◀◀.....skips and searches CD tracks backwards
- 11] RESUME.....stores the last position of a CD track played
HOLD.....locks all buttons
OFF.....switches RESUME and HOLD off
- 12] LINE OUT/🎧.....3.5 mm headphone socket, socket to connect the player to another audio input of an additional appliance, remote control socket (not on all versions)
- 13] VOL ◀.....adjusts the volume
- 14] 4.5V DC.....socket for external power supply
- 15]typeplate
- 16]belt clip holder



This set complies with the radio interference requirements of the European Community.

Batteries (supplied or optionally available)

You can use the following batteries with this CD-player:

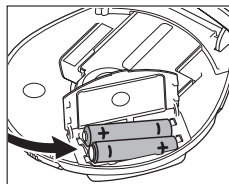
- normal batteries type **LR6, UM3** or **AA** (preferably Philips), or
- alkaline batteries type **LR6, UM3** or **AA** (preferably Philips).

Note: – Old and new or different types of batteries should not be used in combination. Remove batteries if they are empty or if the player is not going to be used for a long time.

Inserting batteries

1 Push OPEN ► to open the CD lid.

2 Open the battery compartment and insert either 2 normal or alkaline batteries, or the rechargeable NiMH battery AY 3362 (if supplied).



Battery indication

The approximate power level of your batteries is shown in the display.

- Battery full
- Battery two-thirds full
- Battery one-third full
- Battery dead or empty. When the batteries are dead or empty, the symbol flashes, *CHARGE* is displayed, and the beep tone sounds repeatedly.



Average playing time of batteries under normal conditions

Battery type	ESP on	ESP off
Normal	7 hours	6 hours
Alkaline	22 hours	19 hours
Rechargeable ECO-PLUS NiMH battery	10 hours	9 hours

Batteries contain chemical substances, so they should be disposed of properly.

ECO-PLUS NiMH battery information (for versions supplied with the rechargeable ECO-PLUS NiMH battery AY 3362)

Recharging works only on players supplied with the rechargeable ECO-PLUS NiMH battery AY 3362.

Recharging the ECO-PLUS NiMH battery on board

1 Insert the rechargeable ECO-PLUS NiMH battery AY 3362.

2 Connect the mains adapter to the 4.5V DC socket of the player and then to the wall socket.
 ► is shown and *CHARGE* is displayed for 5 seconds.



- Recharging stops after a maximum of 7 hours, or when you start playback.

3 When the battery is fully recharged, and *FULL* appear briefly in the display, before the display switches off.



Notes: – It is normal for the batteries to become warm during recharging.
 – If the batteries become too warm, recharging will be interrupted for approximately 30 minutes and *CHARGE* is displayed.
 – To ensure proper recharging on board, take care that contacts are clean.
 – Use only the ECO-PLUS NiMH battery AY 3362.

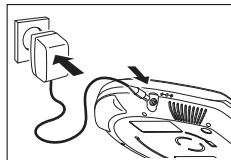
Handling instructions

- Recharging already charged or half-charged batteries will shorten their lifetime. We therefore recommend that you let the rechargeable ECO-PLUS NiMH battery run till it is completely empty before you recharge it.
- To avoid a short circuit, do not let the battery touch any metal object.
- If the battery becomes empty soon after recharging, then either its contacts are dirty or it has reached the end of its lifetime.

Mains adapter (supplied or optionally available)

Use only the AY 3170 adapter (4.5 V/300 mA direct current, positive pole to the centre pin). Any other product may damage the player.

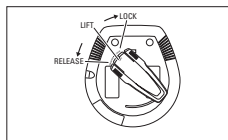
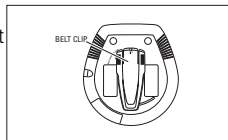
- 1 Make sure that the adapter's voltage corresponds to the local voltage.
- 2 Connect the adapter to the 4.5V DC socket of the player and to the wall socket.



Note: Always disconnect the adapter when you are not using it.

Belt Clip (not on all versions)

- 1 To attach the belt clip to the CD-player, position the shaped grip (found on the back of the belt clip) so that it fits into the belt clip hole of the CD-player.
- 2 Turn the clip to LOCK as indicated on the set.
- 3 To detach, gently lift the belt clip and turn to RELEASE as indicated on the set.

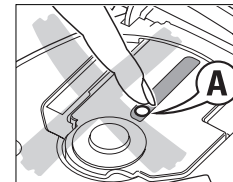


Environmental information

- All redundant packing material has been omitted. We have done our utmost to make the packaging easily separable into two mono materials: cardboard (box) and polyethylene (bags, protective foam sheet).
- Your set consists of materials which can be recycled if disassembled by a specialized company. Please observe the local regulations regarding the disposal of packing materials, exhausted batteries and old equipment.

CD-player and CD handling

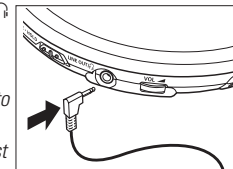
- Do not touch the lens (A) of the CD-player.
- Do not expose the set, batteries or CDs to humidity, rain, sand or excessive heat (caused by heating equipment or direct sunlight).
- You can clean the CD-player with a soft, slightly dampened, lint-free cloth. Do not use any cleaning agents as they may have a corrosive effect.
- To clean the CD, wipe it in a straight line from the centre towards the edge using a soft, lint-free cloth. A cleaning agent may damage the disc! Never write on a CD or attach a sticker to it.
- The lens may cloud over when the set is moved suddenly from cold to warm surroundings. Playing a CD is not possible then. Leave the CD-player in a warm environment until the moisture has evaporated.
- Active mobile phones in the vicinity of the CD-player may cause malfunctions.
- Avoid dropping the set as this may cause damage.



Headphones HE 545

- Connect the supplied headphones to the LINE OUT/🔊 socket of the player.

Note: LINE OUT/🔊 can also be used for connecting the player to your HiFi system (with a signal lead) or to your car radio (with a cassette adapter or signal lead). In both cases, the volume of the player must be set to position 8.



Use your head when using headphones

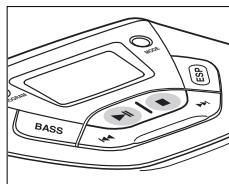
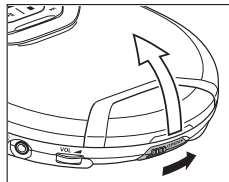
Hearing safety: Do not play your headphones at a high volume. Hearing experts advise that continuous use at high volume can permanently damage your hearing.

Traffic safety: Do not use headphones while driving a vehicle. It may create a hazard and it is illegal in many countries. Even if your headphones are an open-air type designed to let you hear outside sounds, do not turn up the volume so high that you cannot hear what is going on around you.

Playing a CD

This CD-player can play all kinds of **Audio Discs** such as CD-Recordables and CD-Rewritables. Do not try to play a CD-ROM, CDi, VCD, DVD or computer CD.

- 1 Push the OPEN ► slider to open the player.
- 2 Insert an audio CD, printed side up, by pressing the CD onto the hub.
- 3 Close the player by pressing the lid down.
- 4 Press ►|| to switch the player on and start playback.
 - The current track number and elapsed playing time are displayed.



- You can pause playback by pressing ►||.
 - The time at which playback was paused starts flashing.



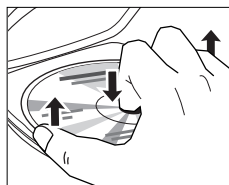
- You can continue playback by pressing ►|| again.

- 5 Press ■ to stop playback.
 - The total number of tracks and the total playing time of the CD are displayed.



- 6 Press ■ again to switch the player off.

- To remove the CD, hold it by its edge and press the hub gently while lifting the CD.



Note: If there is no activity, the set will automatically switch off after a while to save energy.

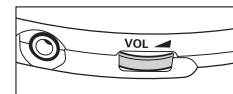
Playback information

- If a CD-Recordable (CD-R) or a CD-Rewritable (CD-RW) is not recorded properly, *RF d 15C* is displayed, indicating that the CD has not been finalized. In that case, use FINALIZE on your CD recorder to complete the recording.
- When playing a CD-Rewritable (CD-RW), please note that it takes 3–15 seconds after pressing ►|| for sound reproduction to start.
- Playback will stop if you open the CD lid.
- While the CD is read, */ - / -* flashes in the display.

Volume and bass

Volume adjustment

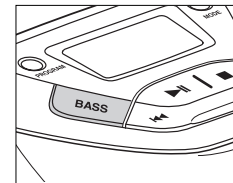
- Adjust the volume by using VOL ▲.



Bass adjustment

You can choose between the bass enhancement levels *dbb 1* and *dbb 2*.

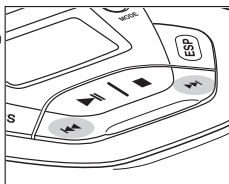
- 1 Press BASS once for *dbb 1* and twice for *dbb 2*.
 - *dbb 1* or *dbb 2* is displayed and **DBB** is shown.
- 2 To switch *dbb 1* or *dbb 2* off, press BASS twice or once, respectively.
 - **DBB** goes off.



Selecting a track and searching

Selecting a track during playback

- Briefly press ◀◀ or ▶▶ once or several times to skip to the current, previous or next track.
 - Playback continues with the selected track, and the track's number is displayed.



Selecting a track when playback is stopped

- Briefly press ◀◀ or ▶▶ once or several times to select the desired track. The track number is displayed.
- Press ▶▶ to start CD play.
 - Playback starts with the selected track.

Searching for a passage during playback

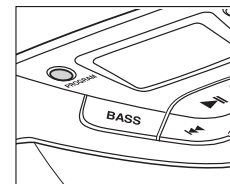
- Keep ◀◀ or ▶▶ pressed to find a particular passage in a backward or forward direction.
 - Searching starts while playback continues at low volume. After 2 seconds the search speeds up.
- Release the button when you reach the desired passage.
 - Playback continues from this position.

Notes: – If the player is in SCAN mode (see MODE chapter), searching is not possible.
 – In SHUFFLE, SHUFFLE REPEAT ALL or REPEAT mode (see MODE chapter), or while playing a program, searching is only possible within the particular track.

Programming track numbers

You can store up to 30 tracks to play in a program. A single track may be stored more than once in the program.

- While playback is stopped, select a track with ◀◀ or ▶▶.
- Press PROGRAM to store the track.
 - PROGRAM lights up; the track number programmed and P with the total number of stored tracks are displayed.
- Select and store all desired tracks in this way.
- Press ▶▶ to start playback of your selected tracks.
 - PROGRAM is shown and playback starts.



- You can review the program by pressing PROGRAM for more than 2 seconds.
 - The display shows all the stored tracks in sequence.

Notes: – If you press PROGRAM and there is no track selected, S E L E C T is displayed.
 – If you try to store more than 30 tracks, F U L L is displayed.

Clearing the program

- While playback is stopped, press ■ to clear program.
 - C L E A R is displayed once, PROGRAM goes off, and the program is cleared.

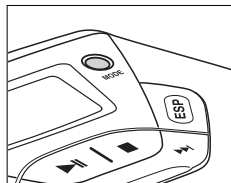


Note: The program will also be cleared if the power supply is interrupted, or if the CD-player lid is opened, or if the set switches off automatically.

Selecting different playing possibilities – MODE

It is possible to play tracks in random order, to repeat a single track or the entire CD, and to play the first few seconds of each track.

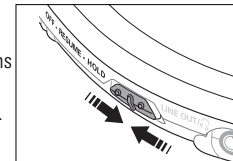
- 1 Press MODE during playback as often as required in order to activate one of the following 'modes'. The active mode is shown in the display.
 - **SHUFFLE**: All tracks of the CD are played in random order until all of them have been played once.
 - **SHUFFLE REPEAT ALL**: All tracks of the CD are played repeatedly in random order.
 - **REPEAT**: The current track is played repeatedly.
 - **REPEAT ALL**: The entire CD is played repeatedly.
 - **SCAN**: The first 10 seconds of each of the remaining tracks are played in sequence.



- 2 Playback starts in the chosen mode after 2 seconds.
 - To return to normal playback, press MODE repeatedly until the display shows no active modes.

RESUME and HOLD

You can interrupt playback and continue (even after an extended period of time) from the position where playback stopped (RESUME) and you can lock all buttons of the set so that no action will be executed (HOLD). Use the RESUME–HOLD–OFF slider for these functions.



RESUME – continuing from where you have stopped

- 1 Switch the slider to RESUME during playback to activate RESUME.
 - **RESUME** is shown.
- 2 Press ■ whenever you want to stop playback.
- 3 Press ►|| whenever you want to resume playback.
 - **RESUME** is shown and playback continues from where you have stopped.



- To deactivate RESUME, switch the slider to OFF.
 - **RESUME** goes off.

HOLD – locking all buttons

You can lock the buttons of the set by switching the slider to HOLD. Now, when a key is pressed, no action will be executed. This is of use, for example, when transporting the player in a bag. With HOLD activated, you can avoid accidental activation of other functions.

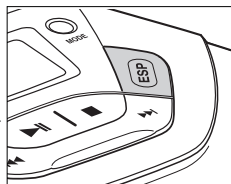
- 1 Switch the slider to HOLD to activate HOLD.
 - All buttons are locked. **HOLD** is shown when you press any button. If the set is switched off, **HOLD** will be shown only when ►|| is pressed.
- 2 To deactivate HOLD, switch the slider to OFF.

Note: If you deactivate HOLD by switching the slider to RESUME, you will be activating the RESUME function.



ESP

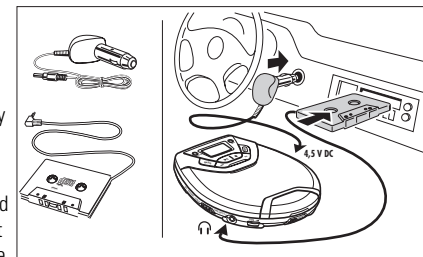
Conventional portable CD-players subjected to a shock or vibration during playback often skip parts of the CD. The **ELECTRONIC SKIP PROTECTION (ESP)** feature, with which your set is equipped, however, prevents such loss of continuity when your player is subjected to light vibrations. But ESP does not prevent playback interruptions caused by vigorous exercise. Nor does it protect against damage resulting from the player being dropped!



- Press ESP during playback to activate the skip protection.
→ **ESP** is shown and the protection is activated.
- To deactivate the skip protection, press ESP again.
→ **ESP** goes off and the protection is deactivated.

In-car use (connections supplied or optionally available)

Only use the AY 3545 car voltage converter (4.5V, DC, positive pole to the centre pin) and the AY 3501 car cassette adapter. Any other product may damage the set.



- 1 Put the CD-player on a horizontal, vibration-free and stable surface. Make sure it is in a safe place, where the player is neither a danger nor obstacle to either driver or passenger.
 - 2 Connect the DC plug of the voltage converter to the 4.5V DC socket of the CD-player (**only for a 12 V car battery, negative grounding**).
 - 3 Insert the voltage converter into the cigarette lighter socket. If necessary, clean the cigarette lighter socket to obtain a good electrical contact.
 - 4 Turn down the volume and connect the cassette adapter plug to the LINE OUT/🔊 socket of the CD player.
 - 5 Carefully insert the cassette adapter into the car radio's cassette compartment.
 - 6 Make sure the cord does not hinder your driving.
 - 7 Start the CD-player, set VOL ◀ to position 8 and adjust the sound with the car radio controls.
- Always remove the voltage converter from the cigarette lighter socket when the CD-player is not in use.

Note: – Avoid excessive heat from the car heating or from direct sunlight (e.g. in a parked car in the summer).
– If your car radio has a LINE IN socket, it is better to use this instead of the cassette adapter. Simply connect a signal lead from the LINE OUT/🔊 socket of the CD-player to this LINE IN socket.

WARNING

Under no circumstances should you try to repair the set yourself as this will invalidate the guarantee.

Problem	Possible cause	Solution
No power, playback does not start	Batteries Batteries inserted incorrectly	Insert the batteries correctly.
	Batteries are empty.	Change the batteries.
	Contact pins are dirty.	Clean them with a cloth.
	Mains adapter Loose connection	Connect the adapter securely.
	In-car use Cigarette lighter is not powered when ignition is off.	Switch on ignition or insert batteries.
no disc indication	CD-RW (CD-R) is not recorded properly.	Use FINALIZE on the CD recorder to complete the recording.
no disc indication	The CD is badly scratched or dirty.	Replace or clean the CD.
	CD is not or incorrectly inserted.	Insert a CD, label upwards.
	The laser lens is steamed up.	Wait until the lens has cleared.
HOLD indication and/or no reaction to controls	HOLD is activated.	Deactivate HOLD.
	Electrostatic discharge	Disconnect the set from power supply or take out the batteries for a few seconds.

If a fault occurs, first check the points listed, before taking the set for repair.

If you are unable to solve a problem by following these hints, consult your dealer or service centre.

Problem	Possible cause	Solution
The CD skips tracks.	The CD is damaged or dirty.	Replace or clean the CD.
	RESUME, SHUFFLE or PROGRAM is active.	Switch RESUME, SHUFFLE or PROGRAM off.
No sound or bad sound quality	PAUSE is activated.	Press ▶II .
	Loose, wrong or dirty connections	Check and clean connections.
	Volume is not adjusted.	Adjust the volume.
	Malfunctions due to nearness of active mobile phones	Keep the player away from active mobile phones.
	Strong magnetic fields near the player	Change the player's position or connections.
In-car use	cassette adapter is inserted incorrectly.	Insert the cassette adapter correctly.
	Temperature inside the car is too high/low.	Let the player adjust to the temperature.
	Cigarette lighter socket is dirty.	Clean the cigarette lighter socket.
	Wrong playback direction of the car cassette player's autoreverse feature	Change the autoreverse direction.

CAUTION

Use of controls or adjustments or performance of procedures other than herein may result in hazardous radiation exposure or other unsafe operation.

POLIZA DE GARANTÍA

ESTA POLIZA ES GRATUITA

Este aparato ha sido cuidadosamente diseñado y se ha fabricado con los mejores materiales bajo un estricto control de calidad, garantizando su buen funcionamiento por los periodos establecidos según el aparato (ver lista en la parte inferior) **a partir de la entrega del aparato al consumidor. Esta póliza incluye la reparación o reposición gratuita de cualquier parte o componente que eventualmente fallase y la mano de obra necesaria para su reparación**, misma que se hará efectiva en cualquiera de nuestros centros de servicio autorizados en el país.

Si su aparato llegase a requerir de nuestro servicio de garantía, acuda al centro de servicio más cercano a su domicilio, de tener alguna duda por favor llame a nuestra CENTRAL DE SERVICIO al tel.: 57 28 42 52, y en el interior del país LADA sin costo al 01 800 506 92 00 en donde con gusto le indicaremos el centro de servicio autorizado más cercano a su domicilio.

PHILIPS MEXICANA S.A. de C.V. a través de sus centros de servicio autorizados **reparará y devolverá a usted su aparato en un plazo no mayor a 20 días hábiles**, contados a partir de la fecha de ingreso, impresa en la orden de servicio de cualquiera de nuestros centros de servicio autorizados.

La garantía de esta póliza cubre cualquier desperfecto o daño eventualmente ocasionado por los trabajos de reparación y/o traslado del aparato en el interior de nuestros centros de servicio autorizados.

Esta póliza sólo tendrá validez, si está debidamente requisitada, sellada y firmada por la casa vendedora, en caso de extravío de esta póliza, podrá hacer efectiva su garantía con la presentación de su factura de compra.

ESTA POLIZA NO SE HARÁ EFECTIVA EN LOS SIGUIENTES CASOS:

- Cuando el aparato sea utilizado en condiciones anormales y los daños o desperfectos que manifestase sean causados por mal trato, descuido o mal uso.
- Cuando el aparato no haya sido operado de acuerdo a su instructivo de uso, en donde se señalan las condiciones normales de operación, los valores nominales y las tolerancias de las tensiones (voltaje), frecuencia (ciclaje) de alimentación eléctrica y las características que deben reunir las instalaciones auxiliares.
- Cuando la causa de la falla o mal funcionamiento sea consecuencia de una reparación inadecuada o alteración producida por personas no autorizadas por PHILIPS MEXICANA S.A. de C.V.
- Cuando los datos de esta póliza hayan sido alterados o modificados.
- Por fenómenos naturales no imputables a la empresa tales como: temblores, inundaciones, incendios, descargas eléctricas, rayos, etc.

PERIODOS DE GARANTÍA

36 MESES. – Monitores para computadora.

12 MESES. – Televisores, videocassetas, video reproductores DVD, grabador reproductor de disco compacto, video proyectores (excepto la lámpara), cámaras de video, decodificadores de señal (IRD), televisor para hotel, sistemas de observación, televisores de proyección, teléfonos celulares, pagers, equipos modulares, sintonificadores, facsimil, LNB, antena de recepción de satélite, DVD ROM, CDR ROM y CDRW ROM para computadora.

6 MESES. – Radiograbadoras con y sin reproductor de disco compacto, reproductor de cassette portátil, reproductor de disco compacto portátil, radio relojes, radios A.M./F.M., auto estéros y teléfonos inalámbricos.

3 MESES. – Accesorios, controles remotos, bocinas, cinta para fax y para cámara de videoconferencia.



PHILIPS

Philips Mexicana, S.A. de C.V.

Producto importado por:
Philips Mexicana, S.A. de C.V.
Norte 45 No. 669 Col. Ind. Vallejo,
Del. Atzacotalco C.P. 02300
Tels. 57 28 42 00 y 57 29 48 00

Centro de Información al Consumidor:
Norte 45 No. 669 Col. Ind. Vallejo
Del. Atzacotalco C.P. 02300
Tel. 53 68 77 88 Lada 01 800 504 62 00

MODELO _____

Nº DE SERIE _____

La presente garantía contará a partir de:

DIA _____

MES _____

AÑO _____

En caso que en su producto se produzca alguna falla, acuda al centro de servicio más cercano a su domicilio (según listado de talleres), de tener alguna duda, por favor llame a nuestra CENTRAL DE SERVICIO, en donde con gusto le atenderemos.

Así mismo, cuando requiera refacciones y partes originales para su producto, acuda a los centros de servicio. Para hacer efectiva la garantía de su producto, es necesario que presente usted esta póliza debidamente requisitada o de lo contrario presentar su factura de compra.

CENTROS DE SERVICIO

Ciudad	EDO	Calle y N°	Colonia	C. P.	Nombre Comercial	Lada	Telefono	Fax	
Acapulco	GRU	Av. Revolution N° 28	M. Aleman	39300	Servicio Electronico Profesional	74	83 32 96	--	S
Cd. Juarez	CHIH.	Rancho el Boqueron 3011	Pradera Dorada	32610	Teleservicio Dominguez	16	18 21 28	18 21 28	S
Cd. Reynosa	TAMP.S	Tiburcio Garza N° 401	Rodriguez	88699	Teleservicio Peape	89	22 59 86	--	S
Chihuahua	CHIH.	Trasvilla y Rietes N° 3503-A	San Felipe	31240	Zener Electronica	14	14 01 16	26 50 41	S
Colima	COL.	Francisco I. Madero N° 426	Centro	28000	TV Antenas de Colima	331	403 01	403 01	S
Culiacan	SIN.	Venustiano Carranza N° 140-A Nte.	Centro	80090	Estereo Voz	67	16 15 10	--	S
Guadalajara	JAL.	Av. Vallarta N° 2250	Ladron de Guayava	44600	Lescocm S.A. de C.V.	3	816 18 88 816 01 28	615 72 62	SR
Leon	GTO	Hernandez Alvarez N° 726	San Juan de Dios	37480	Tecnicos Especializados	47	70 26 99	15 58 64	S
Merida	YUC	Calle 70 N° 443 X 49 Depto. 8	Centro	97000	Servicentro	99	28 54 28	23 39 97	S
Mexicali	B.C.N.	Calz. Cuahuatemoc N° 866-2	Cuahuatemoc Nte.	21200	Baja Electronic's	619	67 49 16	67 49 16	S
Mexico	D.F.	Calz. Vallejo N° 1045-03 Esq. Poniente 124	Industrial Nueva Vallejo	2300	Chyr S.A. de C.V.	5	567 79 56 567 96 32	567 96 32	SR
Mexico	D.F.	Calz. Vallejo N° 904 Loc. 5	Industrial Vallejo	2300	Tecnologia y Servicio S.A. de C.V.	5	587 57 99	587 57 99	S
Mexico	D.F.	Piñeres N° 519 Local C-3	Del Valle	03100	Cocasionario Piñeres	5	805 42 15 805 42 76	605 43 46	SR
Monterrey	N.L.	Juan Mendez N° 825 Nta.	Centro	64000	Monterrey Centro Electronico S.A.	8	375 16 17	374 85 42	SR
Morelia	MICH.	Lago de Patzcuaro N° 500-A	Ventura Puente	58020	Multiserv. Prof. de Zamora	43	12 03 17	--	S
Oaxaca	OAX	Huazares N° 207	Centro	68000	El Francistor S. de R.L. de C.V.	951	647 37	--	S
Pachuca	HGO	Pza. de las Americas Lote 28 Nucleo D	Valle de San Javier	42086	Frazere Electronica	77	14 15 81	--	S
Puebla	PUE	Av. 10 Poniente N° 2902-B	San Alejandro	72090	Selcom	22	48 77 64	48 77 64	SR
Queretaro	GRU	Bolivia 32	Lomas de Queretaro	76190	Electronica Zener	421	610 09	--	S
San Luis Potosi	S.L.P.	Fuente De La Gloria N° 147	Balcones del Valle	78320	Servicios Electronicos	481	534 07	--	S
Tampico	TAMP.S	Laredo N° 105	Mainero	89060	Concesionario Philips Tampico	12	12 36 04	--	SR
Tijuana	B.C.N.	Calle 1a. N° 1540-3	Centro	22000	Sistemas Inalambricos de Comunicacion	66	85 95 58	85 95 58	S
Topilehua	EDO MEX	Calle Toluca N° 505	Sanchez	50040	Concesionario Philips Toluca	72	14 83 09	17 03 21	S
Torreon	COAH	Mariano Lopez Ortiz N° 1126 Nta.	Centro	27000	Electronica Jomar	17	22 00 05	--	S
Tuxtla Gutierrez	CHIS	10 Nte. Ota 153-A	Centro	29000	KC-Video	96	18 19 08	--	S
Veracruz	VER	Guerrero N° 1877 Entre Cortes y Canal	Centro	91700	Antza Comunicaciones	29	32 78 23 32 44 04	32 78 23	S
Villahermosa	TAB	Sanchez Marmol N° 206	Centro	86000	Tecnicentro	93	14 31 36	--	S

NOTA: Los Centros que tengan (S) solo proporcionan Servicio y los que tengan (SR) venden refacciones y proporcionan Servicio.

AUSTRALIA

Philips product warranty for Australia only

Warranty conditions valid for Colour Television, Video Cassette Recorders, CD Recordable, DVD Players, Audio Systems, and Portable Audio.

The benefits given to the purchaser by this warranty are in addition to all other rights and remedies which the purchaser has in respect of the product under the Trade Practices Act or other Commonwealth or State Law.

Philips Consumer Electronics warrants its products to the purchaser as follows and subject to the stated conditions.

12 months free service

Conditions of warranty

1. All claims for warranty service should be made to your nearest Philips Authorised Service Centre. Reasonable evidence of date of purchase must be provided.
2. This warranty extends only to defects occurring under normal use of the product when operated in accordance with the instructions.
3. Home service within the normal service area of our Philips Authorised Service Centres will be provided for television receivers with screen size 48 cm and above. All other products are to be brought or sent to your nearest Philips Authorised Service Centre.
4. This warranty does not cover:
 - a) Mileage or travelling time, pickup or delivery, cost of insurance.
 - b) Service costs arising from failure to correctly adjust the controls of the product or to observe the instructions, or inspections that reveal that the product is in normal working order.
 - c) Product failures caused by misuse, neglect, normal wear and tear, accidental breakage, transit damage, inexpert repairs or modification by unauthorised persons, lightning strikes, vermin infestation or liquid spillage.
 - d) Cleaning of video or audio heads.
 - e) Inadequate receiving antennae.
 - f) Replacement of worn or used batteries, styli or other consumables.

The conditions contained in this warranty card replace and override the provisions of the World-Wide Guarantee for Products sold in Australia.

Philips Authorised Service Centres

To contact your nearest Philips Authorised Service Centre call **1300 36 1392** from anywhere in Australia.

Sydney	Adelaide
Newcastle	Hobart
Perth	Wollongong
Melbourne	Canberra
Brisbane	

Service is provided through 350 accredited service dealers throughout Australia. To find out about your nearest centre, call **1300 36 1392**.

Please record the following information for your records and keep in a safe place.

Model No:.....

Serial No:.....

Please retain your purchase receipt which is required to claim service under warranty.

Philips Consumer Electronics Australia Limited
ACN 008 445 743, 3 Figtree Drive
Homebush NSW 2140

Version 4, 03/99, FPCP-030

NEW ZEALAND

Guarantee and Service for New Zealand

Thank-you for purchasing this quality Philips product. Philips New Zealand Ltd guarantees this product against defective components and faulty workmanship for a period of 12 months. Any defect in materials or workmanship occurring within 12 months from the date of purchase subject to the following conditions will be rectified free of charge by the retailer from whom this product was purchased.

Conditions

1. The product must have been purchased in New Zealand. As proof of purchase, retain the original sales docket indicating the date of purchase.
2. The guarantee applies only to faults caused by defective components, or faulty workmanship on the part of the manufacturer.
3. The guarantee does not cover failures caused by misuse, neglect, normal wear and tear, accidental breakage, use on the incorrect voltage, use contrary to operating instructions, or unauthorised modification to the product or repair by an unauthorised technician.
4. Reasonable evidence (in the form of a sales docket) must be supplied to indicate that the product was purchased no more than 12 months prior to the date of your claim.
5. In the event of a failure, Philips shall be under no liability for any injury, or any loss or damage caused to property or products other than the product under guarantee.

This guarantee does not prejudice your rights under common law and statute, and is in addition to the normal responsibilities of the retailer and Philips.

How to claim

Should your Philips product fail within the guarantee period, please return it to the retailer from whom it was purchased. In most cases the retailer will be able to satisfactorily repair or replace the product.

However, should the retailer not be able to conclude the matter satisfactorily, or if you have other difficulties claiming under this guarantee, please contact

The Guarantee Controller
Philips New Zealand Ltd.

✉ **P.O. Box 41.021**

Auckland

☎ **(09) 84 94 160**

fax ☎ **(09) 84 97 858**

CERTIFICADO DE GARANTIA PARA O BRASIL

(Os dados deste manual estão sujeitos a alterações.)

Este aparelho é garantido pela PHILIPS DA AMAZÔNIA INDÚSTRIA ELETRÔNICA LTDA, por um período superior ao estabelecido por lei, porém, para que a garantia tenha validade, é imprescindível que, além deste certificado, seja apresentada a nota fiscal de compra do produto.

- 1) A PHILIPS DA AMAZÔNIA INDÚSTRIA ELETRÔNICA LTDA, assegura ao proprietário consumidor deste aparelho uma garantia de 365 dias (90 dias legal mais 275 dias adicional) **CONTADOS A PARTIR DA DATA DE ENTREGA DO PRODUTO, CONFORME EXPRESSO NA NOTA FISCAL DE COMPRA**, que passa a fazer parte deste certificado.
- 2) Esta garantia perderá sua validade se:
 - A) O defeito apresentado for ocasionado por uso indevido ou em desacordo com o seu manual de instruções.
 - B) O produto for alterado, violado ou consentado por pessoa não autorizada pela Philips.
 - C) O produto for ligado a fonte de energia (rede elétrica, pilhas, bateria, etc.) de características diferentes das recomendadas no manual de instruções e/ou no produto.
 - D) O número de série que identifica o produto estiver de alguma forma adulterado ou rasurado.
- 3) Estão excluídos desta garantia defeitos decorrentes do descumprimento do manual de instruções do produto, de casos fortuitos ou de força maior, bem como aqueles causados por agentes da natureza e acidentes.
- 4) Excluem-se igualmente desta garantia defeitos decorrentes do uso dos produtos em serviços não doméstico/residencial regular ou em desacordo
- 5) Nos municípios onde não exista oficina autorizada de serviço Philips, as despesas de transporte do aparelho e/ou do técnico autorizado, correm por conta do Sr. consumidor requerente do serviço.
- 6) Este produto tem **GARANTIA INTERNACIONAL**. O serviço técnico (durante ou após a garantia) é disponível em todos os países onde este produto é oficialmente distribuído pela Philips. Nos países onde a Philips não distribui este produto, o serviço técnico da Philips local poderá prestar tal serviço, contudo poderá ocorrer algum atraso no prazo de atendimento se a devida peça de reposição e o manual técnico não forem prontamente disponíveis.
- 7) A garantia não será válida se o produto necessitar de modificações ou adaptações para habilitá-lo a operar em qualquer outro país que não aquele para o qual foi designado, fabricado, aprovado e/ou autorizado, ou ter sofrido qualquer dano decorrente deste tipo de modificação.

PHILIPS DA AMAZÔNIA
INDÚSTRIA ELETRÔNICA LTDA.

Dentro do Brasil, para informações adicionais sobre o produto ou para eventual necessidade de utilização da rede de oficinas autorizadas, ligue para o CENTRO DE INFORMAÇÕES AO CONSUMIDOR, TEL 0800-123123 (discagem direta gratuita) ou escreva para a Caixa Postal 65106 – CEP 01390-970 – SÃO PAULO – SP.

Horário de atendimento: de segunda à sexta-feira, das 08:00 às 20:00 h, aos sábados das 08:00 às 13:00 h.

Para atendimento fora do Brasil, contate a Philips local ou a:

PHILIPS CONSUMER SERVICE
BEUKENLAAN 2
5651 CD EINDHOVEN
THE NETHERLANDS





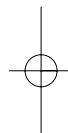
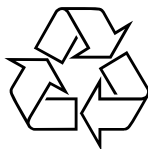
Meet Philips at the Internet
<http://www.philips.com>

English

Français

Español

中文



CLASS 1
LASER PRODUCT

AX2000 AX2011
AX2001 AX5000
AX2002 AX5001
AX2003 AX5011
AX5013