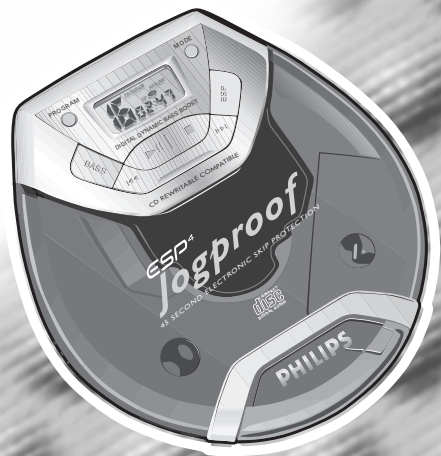


Portable CD player

**AX2000** **AX2011**  
**AX2001** **AX5000**  
**AX2002** **AX5001**  
**AX2003** **AX5011**  
**AX5013**



*Let's make things better.*



**PHILIPS**

## MAGYARORSZÁG

### Minőségtanúsítás

A garanciajegyen feltüntetett forgalombahozó vállalat a 2/1984. (III.10.) BkM-IpM együttes rendelet értelmében tanúsítja, hogy ezen készülék megfelel a műszaki adatokban megadott értékeknek.

### Figyelem!

A meghibásodott készüléket – beleértve a hálózati csatlakozót is – csak szakember (szerviz) javíthatja.

Ne tegye ki a készüléket esőnek vagy nedvesség hatásának!

### Garancia

A forgalombahozó vállalat a termékre 12 hónap garanciát vállal.

Elemes működéshez .....2 × AA

### Teljesítmény

maximális.....2,9 W

névleges.....1,9 W

készenléti állapotban.....1,7 W

Érintésvédelmi osztály II.

Tömeg.....0,206 kg

### Befoglaló méretek

szélesség .....128 mm

magasság .....27,5 mm

mélység .....136,5 mm

### Erősítőrész

Kimeneti teljesítmény...100 mW PMPO  
12 mW RMS

## ČESKA REPUBLIKA

### Vystraha!

Tento přístroj pracuje s laserovým paprskem. Při nesprávné manipulaci s přístrojem (v rozporu s tímto návodem) může dojít k nebezpečnému ozáření. Proto přístroj za chodu neotevírejte ani nesnímejte jeho kryty. Jakoukoli opravu vždy svěřte specializovanému servisu.

### Nebezpečí!

Při sejmutí krytů a odjištění bezpečnostních spínačů hrozí nebezpečí neviditelného laserového záření!

**Chraňte se před přímým zářehem laserového paprsku.**

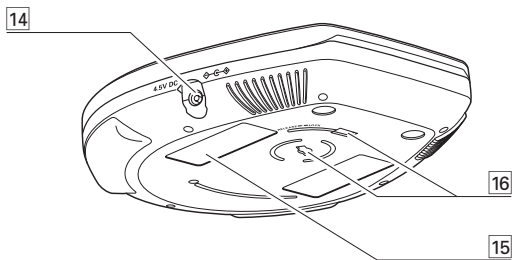
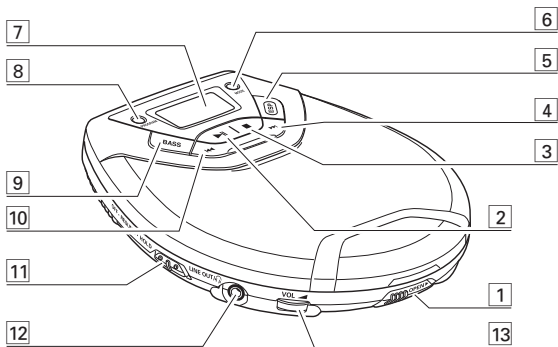
### Záruka

Pokud byste z jakéhokoli důvodu přístroj demontovali, vždy nejdříve vytáhněte síťovou zástrčku.

Přístroj chraňte před jakoukoli vlhkostí i před kapkami vody.

## SLOVAK REPUBLIC

Prístroj sa nesmie používať v mokrom a vlhkom prostredí!  
Chráňte pred striekajúcou a kvapkajúcou vodou!



**English**

Controls .....	6	CD play .....	12–13
Quick start .....	7	Features .....	14–18
Power supply .....	8–10	In-car connection .....	19
General information .....	10–11	Troubleshooting .....	20–21

**English****Русский**

Кнопки управления .....	22	Проигрывание CD .....	28–29
Быстрый запуск .....	23	Функции .....	30–34
Питание .....	24–26	Соединение в автомашине .....	35
Общая информация .....	26–27	Устранение неисправностей .....	36–37

**Русский****Česky**

Ovládací tlačítka .....	38	Přehrávač CD .....	44–45
Rychlý přehled .....	39	Další možnosti .....	46–50
Napájení .....	40–42	Přípoje pro použití v automobilu .....	51
Všeobecné informace .....	42–43	Přehled možných závad .....	52–53

**Česky****Slovensky**

Ovládacie gombíky .....	54	Prehrávač CD .....	60–61
Rýchly prehľad .....	55	Ďalšie možnosti .....	62–66
Napájanie .....	56–58	Přípoje pre použitie v automobile .....	67
Všeobecné informácie .....	58–59	Přehľad možných chýb .....	68–69

**Slovensky****Magyar**

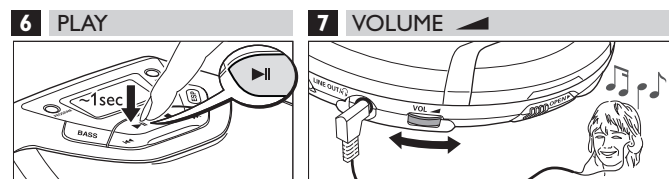
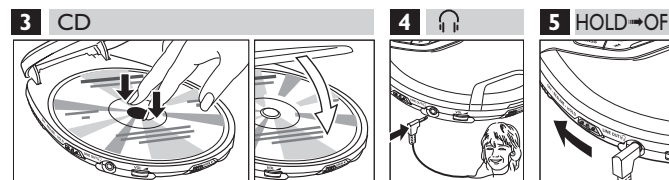
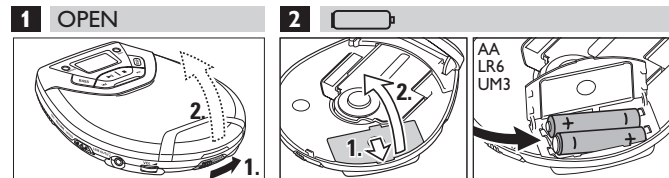
Kezelőgombok .....	70	CD lejátszása .....	76–77
Gyors áttekintés .....	71	További lehetőségek .....	78–82
Feszültségellátás .....	72–74	Csatlakoztatás a gépkocsiban .....	83
Általános tudnivalók .....	74–75	Hibakeresés .....	84–85

**Magyar**

# CONTROLS, refer to the illustration on page 3

- 1 OPEN ►.....opens the CD lid
- 2 ►||.....switches the player on, starts or pauses CD play
- 3 ■.....stops CD play, clears a program or switches the player off
- 4 ►►.....skips and searches CD tracks forwards
- 5 ESP.....**ELECTRONIC SKIP PROTECTION** ensures continuous CD playback regardless of vibrations and shocks
- 6 MODE.....selects the different playing possibilities: **SHUFFLE**, **SHUFFLE REPEAT ALL**, **REPEAT**, **REPEAT ALL** and **SCRN**
- 7 .....display
- 8 PROGRAM.....programs tracks and reviews the program
- 9 BASS.....switches the bass enhancement on and off. This button also switches acoustic feedback (the beep) on/off when it is pressed for more than 2 seconds
- 10 ◀◀.....skips and searches CD tracks backwards
- 11 RESUME.....stores the last position of a CD track played  
HOLD.....locks all buttons  
OFF.....switches RESUME and HOLD off
- 12 LINE OUT/🔊.....3.5 mm headphone socket, socket to connect the player to another audio input of an additional appliance, remote control socket (not on all versions)
- 13 VOL ◀.....adjusts the volume
- 14 4.5V DC.....socket for external power supply
- 15 .....typeplate
- 16 .....belt clip holder

# QUICK START



## Batteries (supplied or optionally available)

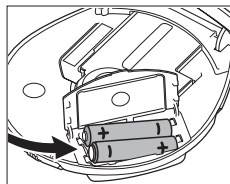
You can use the following batteries with this CD-player:

- normal batteries type **LR6, UM3** or **AA** (preferably Philips), or
- alkaline batteries type **LR6, UM3** or **AA** (preferably Philips).

*Note:* – Old and new or different types of batteries should not be used in combination. Remove batteries if they are empty or if the player is not going to be used for a long time.

### Inserting batteries

- 1 Push OPEN ► to open the CD lid.
- 2 Open the battery compartment and insert either 2 normal or alkaline batteries, or the rechargeable NiMH battery AY 3362 (if supplied).



### Battery charge indication

The approximate power level of your batteries is shown in the display.

- Battery full
- Battery two-thirds full
- Battery one-third full
- Battery dead or empty. When the batteries are dead or empty, the symbol flashes, *BAAT* is displayed, and the beep tone sounds repeatedly.



### Average playing time of batteries under normal conditions

Battery type	ESP on	ESP off
Normal	7 hours	6 hours
Alkaline	22 hours	19 hours
Rechargeable ECO-PLUS NiMH battery	10 hours	9 hours

**Batteries contain chemical substances, so they should be disposed of properly.**

## ECO-PLUS NiMH battery information (for versions supplied with the rechargeable ECO-PLUS NiMH battery AY 3362)

Recharging works only on players supplied with the rechargeable ECO-PLUS NiMH battery AY 3362.

### Recharging the ECO-PLUS NiMH battery on board

- 1 Insert the rechargeable ECO-PLUS NiMH battery AY 3362.
- 2 Connect the mains adapter to the 4.5V DC socket of the player and then to the wall socket.  
► is shown and *CHARGE* is displayed for 5 seconds.
- 3 When the battery is fully recharged, and *FULL* appear briefly in the display, before the display switches off.



- Recharging stops after a maximum of 7 hours, or when you start playback.



*Notes:* – It is normal for the batteries to become warm during recharging.  
– If the batteries become too warm, recharging will be interrupted for approximately 30 minutes and *HAAT* is displayed.  
– To ensure proper recharging on board, take care that contacts are clean.  
– Use only the ECO-PLUS NiMH battery AY 3362.

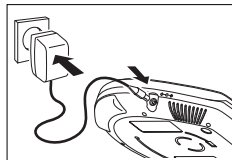
### Handling instructions

- Recharging already charged or half-charged batteries will shorten their lifetime. We therefore recommend that you let the rechargeable ECO-PLUS NiMH battery run till it is completely empty before you recharge it.
- To avoid a short circuit, do not let the battery touch any metal object.
- If the battery becomes empty soon after recharging, then either its contacts are dirty or it has reached the end of its lifetime.

## Mains adapter (supplied or optionally available)

Use only the AY 3170 adapter (4.5 V/300 mA direct current, positive pole to the centre pin). Any other product may damage the player.

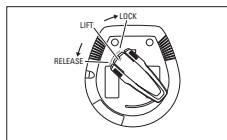
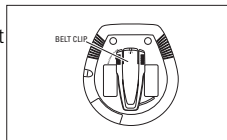
- 1 Make sure that the adapter's voltage corresponds to the local voltage.
- 2 Connect the adapter to the 4.5V DC socket of the player and to the wall socket.



*Note: Always disconnect the adapter when you are not using it.*

## Belt Clip (not on all versions)

- 1 To attach the belt clip to the CD-player, position the shaped grip (found on the back of the belt clip) so that it fits into the belt clip hole of the CD-player.
- 2 Turn the clip to LOCK as indicated on the set.
- 3 To detach, gently lift the belt clip and turn to RELEASE as indicated on the set.

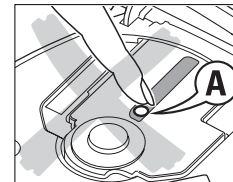


## Environmental information

- All redundant packing material has been omitted. We have done our utmost to make the packaging easily separable into two mono materials: cardboard (box) and polyethylene (bags, protective foam sheet).
- Your set consists of materials which can be recycled if disassembled by a specialized company. Please observe the local regulations regarding the disposal of packing materials, exhausted batteries and old equipment.

## CD-player and CD handling

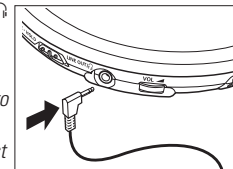
- Do not touch the lens (A) of the CD-player.
- Do not expose the set, batteries or CDs to humidity, rain, sand or excessive heat (caused by heating equipment or direct sunlight).
- You can clean the CD-player with a soft, slightly dampened, lint-free cloth. Do not use any cleaning agents as they may have a corrosive effect.
- To clean the CD, wipe it in a straight line from the centre towards the edge using a soft, lint-free cloth. A cleaning agent may damage the disc! Never write on a CD or attach a sticker to it.
- The lens may cloud over when the set is moved suddenly from cold to warm surroundings. Playing a CD is not possible then. Leave the CD-player in a warm environment until the moisture has evaporated.
- Active mobile phones in the vicinity of the CD-player may cause malfunctions.
- Avoid dropping the set as this may cause damage.



## Headphones HE 545

- Connect the supplied headphones to the LINE OUT/🔊 socket of the player.

*Note: LINE OUT/🔊 can also be used for connecting the player to your HiFi system (with a signal lead) or to your car radio (with a cassette adapter or signal lead). In both cases, the volume of the player must be set to position 8.*



## Use your head when using headphones

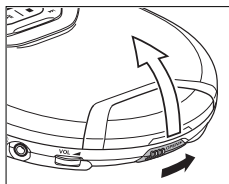
**Hearing safety:** Do not play your headphones at a high volume. Hearing experts advise that continuous use at high volume can permanently damage your hearing.

**Traffic safety:** Do not use headphones while driving a vehicle. It may create a hazard and it is illegal in many countries. Even if your headphones are an open-air type designed to let you hear outside sounds, do not turn up the volume so high that you cannot hear what is going on around you.

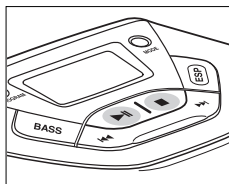
## Playing a CD

This CD-player can play all kinds of **Audio Discs** such as CD-Recordables and CD-Rewritables. Do not try to play a CD-ROM, CDi, VCD, DVD or computer CD.

1 Push the OPEN ► slider to open the player.



2 Insert an audio CD, printed side up, by pressing the CD onto the hub.



3 Close the player by pressing the lid down.

4 Press ►► to switch the player on and start playback.  
→ The current track number and elapsed playing time are displayed.



• You can pause playback by pressing ►►.  
→ The time at which playback was paused starts flashing.

• You can continue playback by pressing ►► again.

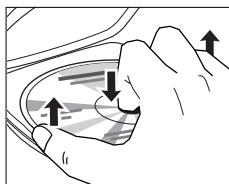
5 Press ■ to stop playback.

→ The total number of tracks and the total playing time of the CD are displayed.



6 Press ■ again to switch the player off.

• To remove the CD, hold it by its edge and press the hub gently while lifting the CD.



*Note: If there is no activity, the set will automatically switch off after a while to save energy.*

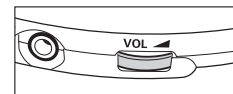
## Playback information

- If a CD-Recordable (CD-R) or a CD-Rewritable (CD-RW) is not recorded properly, *not final* is displayed, indicating that the CD has not been finalized. In that case, use FINALIZE on your CD recorder to complete the recording.
- When playing a CD-Rewritable (CD-RW), please note that it takes 3–15 seconds after pressing ►► for sound reproduction to start.
- Playback will stop if you open the CD lid.
- While the CD is read, *1 - -* flashes in the display.

## Volume and bass

### Volume adjustment

- Adjust the volume by using VOL ◀.

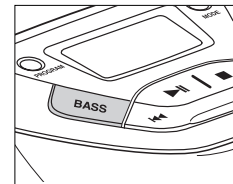


### Bass adjustment

You can choose between the bass enhancement levels *dbb 1* and *dbb 2*.

1 Press BASS once for *dbb 1* and twice for *dbb 2*.

→ *dbb 1* or *dbb 2* is displayed and **DBB** is shown.



2 To switch *dbb 1* or *dbb 2* off, press BASS twice or once, respectively.

→ **DBB** goes off.

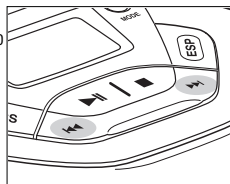




## Selecting a track and searching

### Selecting a track during playback

- Briefly press ◀◀ or ▶▶ once or several times to skip to the current, previous or next track.
  - ▶ Playback continues with the selected track, and the track's number is displayed.



### Selecting a track when playback is stopped

- Briefly press ◀◀ or ▶▶ once or several times to select the desired track. The track number is displayed.
- Press ▶▶ to start CD play.
  - ▶ Playback starts with the selected track.

### Searching for a passage during playback

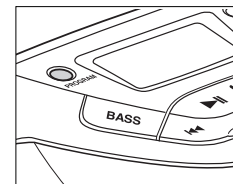
- Keep ◀◀ or ▶▶ pressed to find a particular passage in a backward or forward direction.
  - ▶ Searching starts while playback continues at low volume. After 2 seconds the search speeds up.
- Release the button when you reach the desired passage.
  - ▶ Playback continues from this position.

*Notes:* – If the player is in SCAN mode (see MODE chapter), searching is not possible.  
 – In SHUFFLE, SHUFFLE REPEAT ALL or REPEAT mode (see MODE chapter), or while playing a program, searching is only possible within the particular track.

## Programming track numbers

You can store up to 30 tracks to play in a program. A single track may be stored more than once in the program.

- While playback is stopped, select a track with ◀◀ or ▶▶.
- Press PROGRAM to store the track.
  - ▶ PROGRAM lights up; the track number programmed and P with the total number of stored tracks are displayed.
- Select and store all desired tracks in this way.
- Press ▶▶ to start playback of your selected tracks.
  - ▶ PROGRAM is shown and playback starts.



- You can review the program by pressing PROGRAM for more than 2 seconds.
  - ▶ The display shows all the stored tracks in sequence.

*Notes:* – If you press PROGRAM and there is no track selected, 5 5 5 5 5 is displayed.  
 – If you try to store more than 30 tracks, F U L L is displayed.

### Clearing the program

- While playback is stopped, press ■ to clear program.
  - ▶ CLEAR is displayed once, PROGRAM goes off, and the program is cleared.



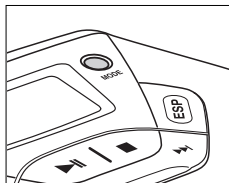
*Note:* The program will also be cleared if the power supply is interrupted, or if the CD-player lid is opened, or if the set switches off automatically.

## Selecting different playing possibilities – MODE

It is possible to play tracks in random order, to repeat a single track or the entire CD, and to play the first few seconds of each track.

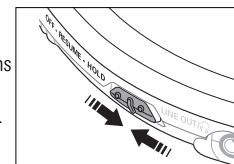
- 1 Press MODE during playback as often as required in order to activate one of the following 'modes'. The active mode is shown in the display.
  - **SHUFFLE**: All tracks of the CD are played in random order until all of them have been played once.
  - **SHUFFLE REPEAT ALL**: All tracks of the CD are played repeatedly in random order.
  - **REPEAT**: The current track is played repeatedly.
  - **REPEAT ALL**: The entire CD is played repeatedly.
  - **SCAN**: The first 10 seconds of each of the remaining tracks are played in sequence.
- 2 Playback starts in the chosen mode after 2 seconds.

  - To return to normal playback, press MODE repeatedly until the display shows no active modes.



## RESUME and HOLD

You can interrupt playback and continue (even after an extended period of time) from the position where playback stopped (RESUME) and you can lock all buttons of the set so that no action will be executed (HOLD). Use the RESUME–HOLD–OFF slider for these functions.



### RESUME – continuing from where you have stopped

- 1 Switch the slider to RESUME during playback to activate RESUME.
  - RESUME is shown.
- 2 Press ■ whenever you want to stop playback.
- 3 Press ►|| whenever you want to resume playback.
  - RESUME is shown and playback continues from where you have stopped.



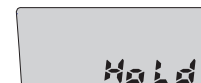
- To deactivate RESUME, switch the slider to OFF.
  - RESUME goes off.

### HOLD – locking all buttons

You can lock the buttons of the set by switching the slider to HOLD. Now, when a key is pressed, no action will be executed. This is of use, for example, when transporting the player in a bag. With HOLD activated, you can avoid accidental activation of other functions.

- 1 Switch the slider to HOLD to activate HOLD.
  - All buttons are locked. **HOLD** is shown when you press any button. If the set is switched off, **HOLD** will be shown only when ►|| is pressed.
- 2 To deactivate HOLD, switch the slider to OFF.

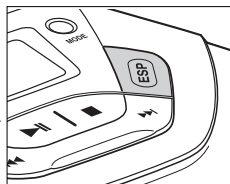
*Note: If you deactivate HOLD by switching the slider to RESUME, you will be activating the RESUME function.*



## ESP

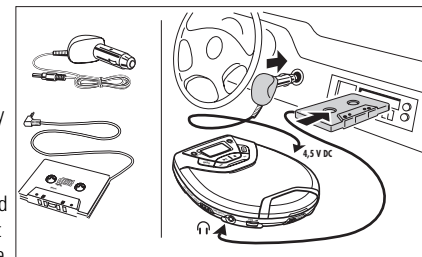
Conventional portable CD-players subjected to a shock or vibration during playback often skip parts of the CD. The **ELECTRONIC SKIP PROTECTION (ESP)** feature, with which your set is equipped, however, prevents such loss of continuity when your player is subjected to light vibrations. But ESP does not prevent playback interruptions caused by vigorous exercise. Nor does it protect against damage resulting from the player being dropped!

- Press ESP during playback to activate the skip protection.  
→ **ESP** is shown and the protection is activated.
- To deactivate the skip protection, press ESP again.  
→ **ESP** goes off and the protection is deactivated.



## In-car use (connections supplied or optionally available)

Only use the AY 3545 car voltage converter (4.5V, DC, positive pole to the centre pin) and the AY 3501 car cassette adapter. Any other product may damage the set.



- 1 Put the CD-player on a horizontal, vibration-free and stable surface. Make sure it is in a safe place, where the player is neither a danger nor obstacle to either driver or passenger.
  - 2 Connect the DC plug of the voltage converter to the 4.5V DC socket of the CD-player (**only for a 12 V car battery, negative grounding**).
  - 3 Insert the voltage converter into the cigarette lighter socket. If necessary, clean the cigarette lighter socket to obtain a good electrical contact.
  - 4 Turn down the volume and connect the cassette adapter plug to the LINE OUT/🔊 socket of the CD player.
  - 5 Carefully insert the cassette adapter into the car radio's cassette compartment.
  - 6 Make sure the cord does not hinder your driving.
  - 7 Start the CD-player, set VOL ◀ to position 8 and adjust the sound with the car radio controls.
- Always remove the voltage converter from the cigarette lighter socket when the CD-player is not in use.

*Note:* – Avoid excessive heat from the car heating or from direct sunlight (e.g. in a parked car in the summer).  
– If your car radio has a LINE IN socket, it is better to use this instead of the cassette adapter. Simply connect a signal lead from the LINE OUT/🔊 socket of the CD-player to this LINE IN socket.

## WARNING

*Under no circumstances should you try to repair the set yourself as this will invalidate the guarantee.*

Problem	Possible cause	Solution
<b>No power, playback does not start</b>	<b>Batteries</b>	
	Batteries inserted incorrectly	Insert the batteries correctly.
	Batteries are empty.	Change the batteries.
	Contact pins are dirty.	Clean them with a cloth.
	<b>Mains adapter</b>	
	Loose connection	Connect the adapter securely.
	<b>In-car use</b>	
	Cigarette lighter is not powered when ignition is off.	Switch on ignition or insert batteries.
<b>RF indication</b>	CD-RW (CD-R) is not recorded properly.	Use FINALIZE on the CD recorder to complete the recording.
<b>no indication</b>	The CD is badly scratched or dirty.	Replace or clean the CD.
	CD is not or incorrectly inserted.	Insert a CD, label upwards.
	The laser lens is steamed up.	Wait until the lens has cleared.
<b>HOLD indication and/or no reaction to controls</b>	HOLD is activated.	Deactivate HOLD.
	Electrostatic discharge	Disconnect the set from power supply or take out the batteries for a few seconds.

If a fault occurs, first check the points listed, before taking the set for repair.

If you are unable to solve a problem by following these hints, consult your dealer or service centre.

Problem	Possible cause	Solution
<b>The CD skips tracks.</b>	The CD is damaged or dirty.	Replace or clean the CD.
	<b>RESUME, SHUFFLE</b> or <b>PROGRAM</b> is active.	Switch <b>RESUME, SHUFFLE</b> or <b>PROGRAM</b> off.
<b>No sound or bad sound quality</b>	<b>PAUSE</b> is activated.	Press <b>▶II</b> .
	Loose, wrong or dirty connections	Check and clean connections.
	Volume is not adjusted.	Adjust the volume.
	Malfunctions due to nearness of active mobile phones	Keep the player away from active mobile phones.
	Strong magnetic fields near the player	Change the player's position or connections.
	<b>In-car use</b>	
	cassette adapter is inserted incorrectly.	Insert the cassette adapter correctly.
	Temperature inside the car is too high/low.	Let the player adjust to the temperature.
	Cigarette lighter socket is dirty.	Clean the cigarette lighter socket.
	Wrong playback direction of the car cassette player's autoreverse feature	Change the autoreverse direction.

## CAUTION

**Use of controls or adjustments or performance of procedures other than herein may result in hazardous radiation exposure or other unsafe operation.**