

# Always there to help you

Register your product and get support at  
[www.philips.com/support](http://www.philips.com/support)

AW3000



## User manual

# PHILIPS



# Contents

---

<b>1 Important</b>	<b>2</b>
Safety	2
Notice	3

---

<b>2 Your Wireless Hi-Fi Speaker</b>	<b>4</b>
Introduction	4
What's in the box	4
What else you need	4
Overview of the main unit	5

---

<b>3 Prepare</b>	<b>6</b>
Download Philips AirStudio+ Lite to your smartphone or tablets	6
Connect power and switch on	7

---

<b>4 Connect AW3000 to your home Wi-Fi network</b>	<b>9</b>
Option 1: Set up wireless connection to a non-WPS router through an iOS device	9
Option 2: Set up through a non-WPS Wi-Fi router and Android device	12
Option 3: Set up wireless connection to a WPS router	14
Option 4: Set up wired connection through an Ethernet cable	15

---

<b>5 Play</b>	<b>17</b>
Listen to Internet radio stations through AW3000	17
Play from an external device	19

---

<b>6 Upgrade firmware</b>	<b>21</b>
---------------------------	-----------

---

<b>7 Product information</b>	<b>22</b>
Specifications	22

---

<b>8 Troubleshooting</b>	<b>23</b>
--------------------------	-----------

---

---

<b>9 Appendix 1: Mount the device onto wall</b>	<b>25</b>
---	-----------

---

<b>10 Appendix 2: Understand meanings of LED colors</b>	<b>26</b>
---	-----------

---

# 1 Important

## Safety

Information for Europe:  
Know these safety symbols



The 'exclamation mark' calls attention to features for which you should carefully read the supplied literature to prevent operating and maintenance problems.

The 'lightning bolt' symbol indicates uninsulated components within the product that can cause an electric shock.

To reduce the risk of fire or electric shock, do not expose the product to rain or moisture and do not place any objects filled with liquids, such as vases, on the product.

- ① Read these instructions.
- ② Keep these instructions.
- ③ Heed all warnings.
- ④ Follow all instructions.
- ⑤ Do not use this product near water.
- ⑥ Clean only with dry cloth.
- ⑦ Do not block any ventilation openings. Install in accordance with the manufacturer's instructions.
- ⑧ Do not remove the casing of this product.

- ⑨ Do not expose the product to dripping / splashing water, rain or high humidity.
- ⑩ Keep this product away from direct sunlight, naked flames or heat.
- ⑪ Do not install near any heat sources such as radiators, heat registers, stoves, or other electrical equipment (including amplifiers).
- ⑫ Do not place any other electrical equipment on the product.
- ⑬ Do not place any sources of danger on the product (e.g. objects containing liquids, burning candles).
- ⑭ Where the mains plug or an appliance coupler is used as the disconnect device, the disconnect device shall remain readily operable.



### Warning

- Never remove the casing of this apparatus.
- Never lubricate any part of this apparatus.
- Never place this apparatus on other electrical equipment.
- Keep this apparatus away from direct sunlight, naked flames or heat.
- Ensure that you always have easy access to the power cord, plug or adaptor to disconnect this apparatus from the power.

Risk of overheating! Never install this apparatus in a confined space. Always leave a space of at least four inches around this apparatus for ventilation. Ensure curtains or other objects never cover the ventilation slots on this apparatus.

## Notice

# CE 0560

This product complies with the radio interference requirements of the European Community.

This product complies with the requirement of the 1999/5/EC directive.

### Modifications

Modifications not authorized by the manufacturer may void user's authority to operate this product.



Your product is designed and manufactured with high quality materials and components, which can be recycled and reused.



When this crossed-out wheeled bin symbol is attached to a product it means that the product is covered by the European Directive 2002/96/EC.

Please inform yourself about the local separate collection system for electrical and electronic products.

Please act according to your local rules and do not dispose of your old products with your normal household waste. Correct disposal of your old product helps to prevent potential negative consequences for the environment and human health.

### Environmental information

All unnecessary packaging has been omitted. We have tried to make the packaging easy to separate into three materials: cardboard (box), polystyrene foam (buffer) and polyethylene (bags, protective foam sheet.)

Your system consists of materials which can be recycled and reused if disassembled by a specialized company. Please observe the local regulations regarding the disposal of packaging materials, exhausted batteries and old equipment.

Android is a trademark of Google Inc. Use of this trademark is subject to Google permissions.

### Class II equipment symbol:



CLASS II apparatus with double insulation, and no protective earth provided.



#### Note

- The type plate is located on the bottom of the apparatus.

## 2 Your Wireless Hi-Fi Speaker

Congratulations on your purchase, and welcome to Philips! To fully benefit from the support that Philips offers, register your product at [www.philips.com/welcome](http://www.philips.com/welcome).

If you contact Philips, you will be asked for the model and serial number of this apparatus. The model number and serial number are on the bottom of the apparatus. Write the numbers here:

Model No. \_\_\_\_\_

Serial No. \_\_\_\_\_

---

### Introduction

With this wireless Hi-Fi speaker, you can:

- Listen to music sent from a DLNA / UPnP compatible APP.
- listen to Internet radio stations or online music services.
- play music from other audio devices through the **MP3-LINK** socket.

---

### What's in the box

Check and identify the contents of your package:

- Wireless Hi-Fi speaker with built-in Wi-Fi
- 1 x AC power adaptor
- Quick start guide
- Safety sheet

---

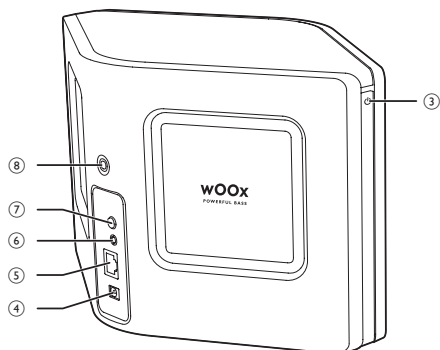
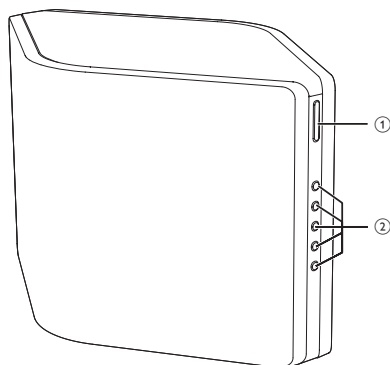
### What else you need

To stream audio wirelessly to AW3000, you need:

- a certified Wi-Fi router
- an iOS or Android device, such as an iPod touch/iPhone/iPad; or an Android phone or tablet
- the **Philips AirStudio+ Lite** app available on Apple **App Store** (for iOS devices) or Google **Play Store** (for Android devices)

Your AW3000 should be connected to the same local network as your iOS/Android device through the Wi-Fi router.

## Overview of the main unit



### ⑥ MP3-LINK

- Connect an external audio player through a 3.5mm audio cable (not supplied).

### ⑦ WI-FI SETUP button

- Connect the device to a Wi-Fi network.

### ⑧ Screw hole for wall mounting



#### Tip

- You can go to Appendix 1 for details about wall mounting (see 'Appendix 1: Mount the device onto wall' on page 26).

### ① +/-

- Adjust volume.

### ② Numeric keys (1 to 5)

- Tune to a preset Internet radio station.
- Numeric key 1: Reset the device.

### ③ Power/status indicator/button

- Show the current status of the device.
- Switch the device on or to normal/Eco standby mode.

### ④ DC IN

- Connect the power adaptor.

### ⑤ ETHERNET

- (Optional) Connect to a wireless router through an Ethernet cable (not supplied).

## 3 Prepare

Always follow the instructions in this chapter in sequence.

### Download Philips AirStudio+ Lite to your smartphone or tablets

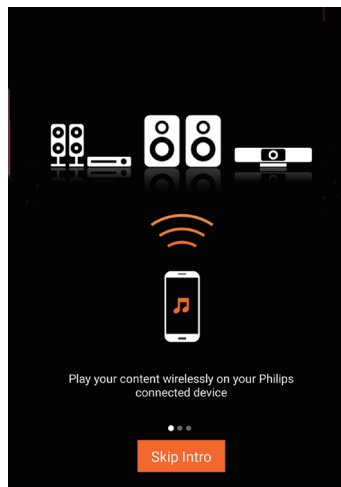
- 1 (For iPod touch/iPhone/iPad users) Install **Philips AirStudio+ Lite** from Apple **App Store**, and then run the app.



(For users of Android smartphones or tablets)  
Install **Philips AirStudio+ Lite** from Google **Play Store** and then run the app.



- 2 Flick right to view the introduction pages and then go to the initial **Setup** page, or tap **Skip intro** to enter the initial **Setup** page directly.

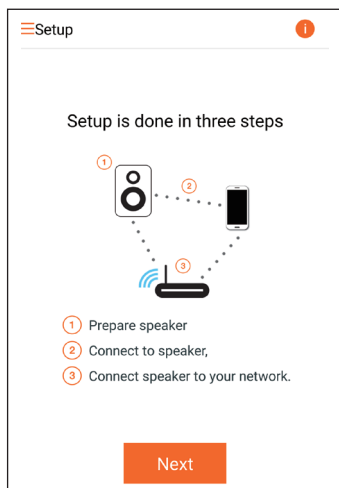




- 3 On the initial **Setup** page, tap **Setup a new speaker**.



- 4 Read the general setup steps, then tap **Next**.



## Connect power and switch on



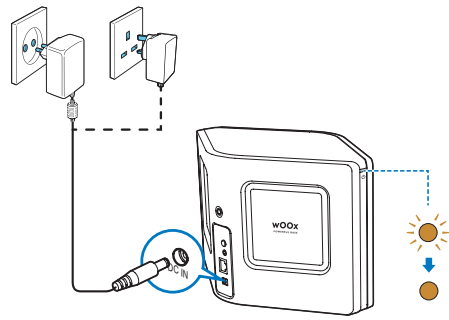
### Caution

- Risk of product damage! Make sure that the power supply voltage matches the voltage printed on the bottom of the device.
- Risk of electric shock! When you unplug the AC adaptor, always pull the plug from the socket. Never pull the cord.
- Before you connect the AC adaptor, make sure that you have completed all the other connections.

- 1 Read the power connection instructions on the app.



- 2 Connect the AC power cord to
- the **DC IN** socket on the back of the device.
  - the wall power socket.
- ↳ The device switches on automatically.
- ↳ The power/status indicator blinks amber during boot-up.
- ↳ After a while, for first-time setup, the power/status indicator turns solid amber.



	Operation	LED status
On -> Normal standby	Briefly press the power button/indicator above $\Phi$ .	Amber/white -> Green
On/Normal standby -> Eco power standby	Press and hold the power button/indicator above $\Phi$ for less than 3 seconds and then release the button.	Amber/white or green -> Off
Normal standby/ Eco power standby -> On	Briefly press the power button/indicator above $\Phi$ .	Green/Off -> Amber/white

- 3 Tap **Next** on the app screen to continue.

### Switch between normal and Eco power standby mode

- To switch the device to normal standby mode, briefly press the power button/indicator above  $\Phi$ .
 

↳ The power/status indicator turns green.
- To switch the device to Eco power standby mode, press and hold the power button/indicator above  $\Phi$  for less than 3 seconds and then release the button.
 

↳ The power/status indicator turns amber for a short while and then turns off.
- To switch the device on from normal or Eco power standby mode, briefly press the power button/indicator above  $\Phi$  again.

## 4 Connect AW3000 to your home Wi-Fi network

To connect AW3000 to your existing home Wi-Fi network, you need to apply your home Wi-Fi settings to AW3000.

Choose your best setup method based on the preconditions listed below.

Platform of your mobile device	Type of your Wi-Fi router	Other requirement	Setup method
iOS	Non-WPS	No	Choose option 1 (see 'Option 1: Set up wireless connection to a non-WPS router through an iOS device' on page 9).
Android	Non-WPS	No	Choose option 2 (see 'Option 2: Set up through a non-WPS Wi-Fi router and Android device' on page 12).
Either iOS or Android	WPS	No	Choose option 3 (see 'Option 3: Set up wireless connection to a WPS router' on page 13).
Either iOS or Android	Either non-WPS or WPS	You have an Ethernet cable.	Choose option 4 (see 'Option 4: Set up wired connection through an Ethernet cable' on page 15).

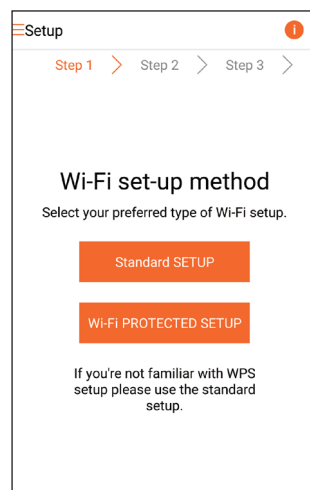
Before connection of AW3000 to your home Wi-Fi network, make sure that:

- ① your Wi-Fi router is powered on and working properly.
- ② AW3000 has been powered on and booted up successfully (see 'Connect power and switch on' on page 7).
- ③ you have jotted down your Wi-Fi password.

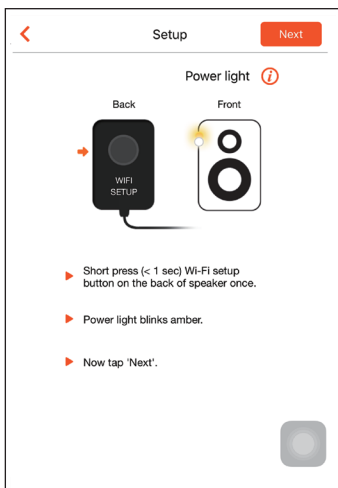
Once connected successfully, AW3000 will remember your home Wi-Fi settings. Then you can play music or listen to Internet radio via **Philips AirStudio+ Lite** whenever AW3000 is powered on and connected to your home Wi-Fi network automatically.

### Option 1: Set up wireless connection to a non-WPS router through an iOS device

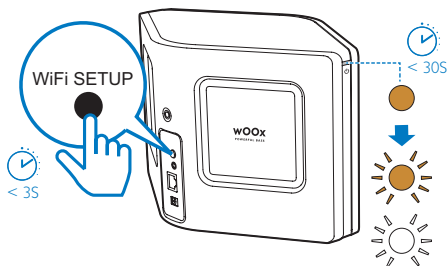
- 1 Before setup, make sure that your iOS device is connected to your home Wi-Fi network.
- 2 Select **Standard setup** and tap **Next**.



- 3 Read the Wi-Fi setup instructions on the app.



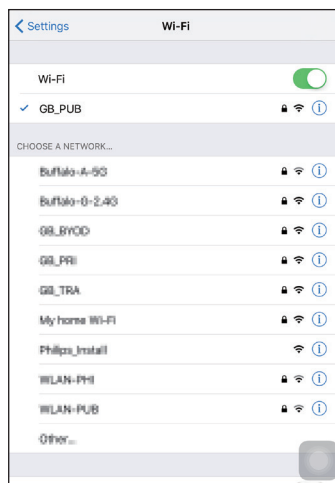
- 4 As instructed, briefly press **WI-FI SETUP** on the back of AW3000.
  - ↳ The power/status indicator starts to blink amber and white alternately.
  - ↳ A new Wi-Fi network created by AW3000 will appear, with the network name (SSID) of **Philips\_Install**.



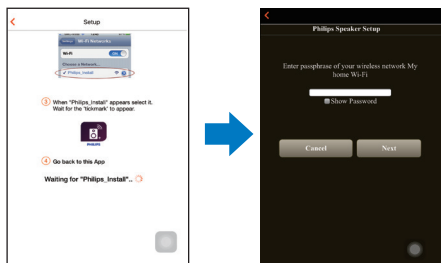
- 5 Tap **Next** on the above app screen, and then read how to proceed with network setup.



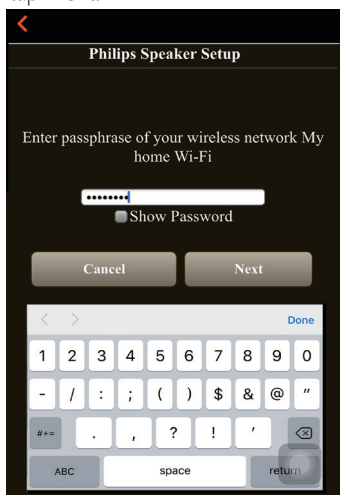
- 6 As instructed, exit the app, and then select **Philips\_Install** from the list of available Wi-Fi networks.



- 7 Make sure that your iOS device is connected to **Philips\_Install**, and then go back to **Philips AirStudio+ Lite**.
- 8 Wait until the password input box appears.

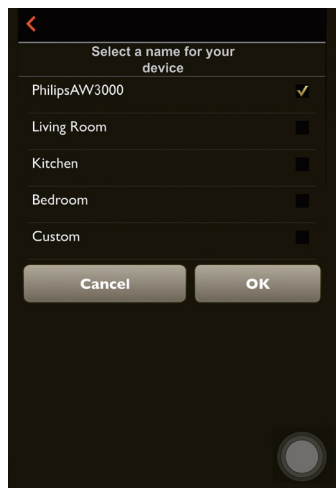


- 9 Enter the password of your home Wi-Fi network, tap **Done** to finish input, and then tap **Next**.

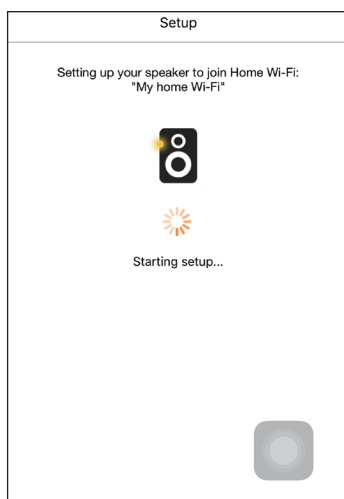


\* If your Wi-Fi password contains such special characters as #/:;!', you need to change your password.

- 10 Name your speaker as you like, and then tap **OK** to connect AW3000 to your home Wi-Fi network.



- 11 Wait until the power/status indicator on AW3000 turns solid white.
- ↳ The following app screen appears.
  - ↳ AW3000 is connected to your home Wi-Fi network successfully.



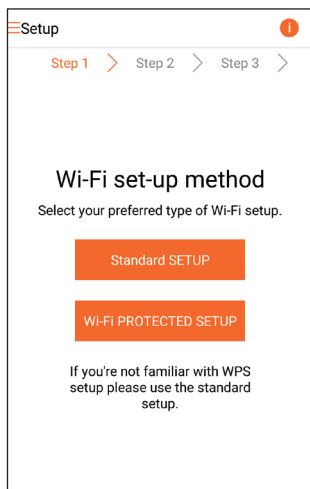


## Tip

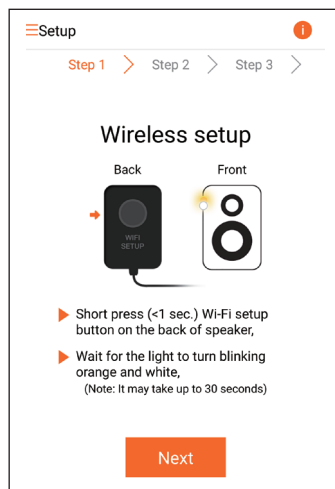
- After successful network setup, you can tap **Rock n' Roll** on the above app screen to get ready for music play directly. For more details, go to the 'Play' section (see 'Play' on page 16).

## Option 2: Set up through a non-WPS Wi-Fi router and Android device

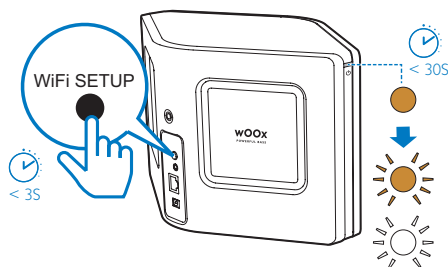
- Before setup, make sure that your Android device is connected to your home Wi-Fi network.
- Select **Standard setup** and tap **Next**.



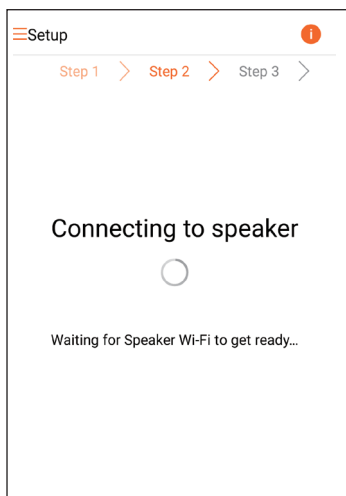
- Read the Wi-Fi setup instructions on the app.



- As instructed, briefly press **Wi-Fi SETUP** on the back of AW3000.
  - The power/status indicator blinks amber and white alternately.
  - A new Wi-Fi network created by AW3000 will appear, with the network name (SSID) of **Philips\_Install**.



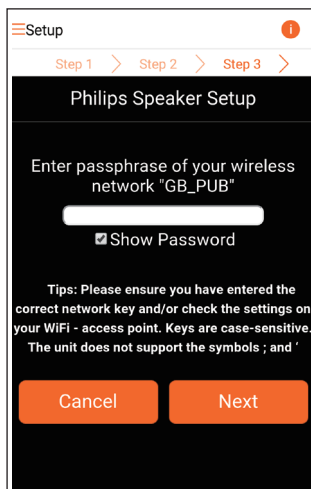
- 5 Tap **Next** on the above app screen.  
 ↳ Your Android device starts to connect with the new Wi-Fi network created by AW3000 automatically.



- 6 Wait until the speaker is found.

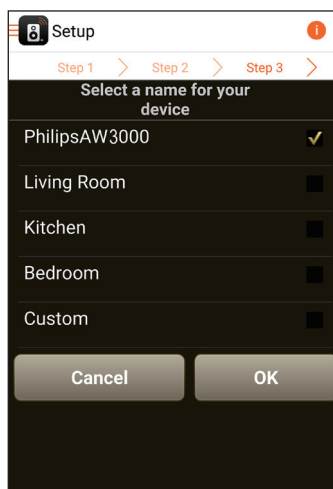


- 7 Enter the password of your home Wi-Fi network, and then tap **Next**.



\* If your Wi-Fi password contains such special characters as #/:;/', you need to change your password.

- 8 Name your speaker as you like, and then tap **OK** to connect AW3000 to your home Wi-Fi network.



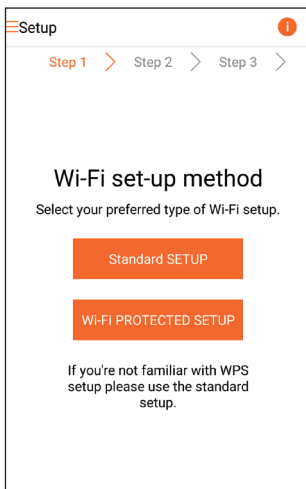
- Wait until the power/status indicator on AW3000 turns solid white.  
↳ AW3000 is connected to your home Wi-Fi network successfully.

#### Note

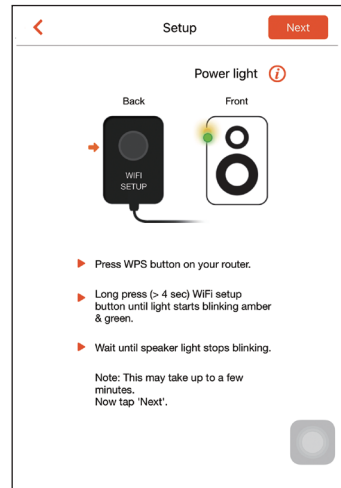
- After successful network setup, you can tap **Rock n' Roll** on the above app screen to get ready for music play directly. For more details, go to the 'Play' section (see 'Play' on page 16).

## Option 3: Set up wireless connection to a WPS router

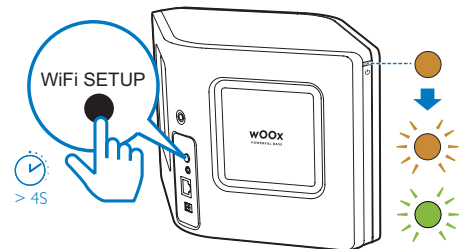
- Select **Wi-Fi PROTECTED SETUP** and tap Next.



- Read the WPS setup instructions.



- As instructed, press and hold **WI-FI SETUP** on the back of AW3000.  
↳ The power/status indicator blinks amber and green alternately.

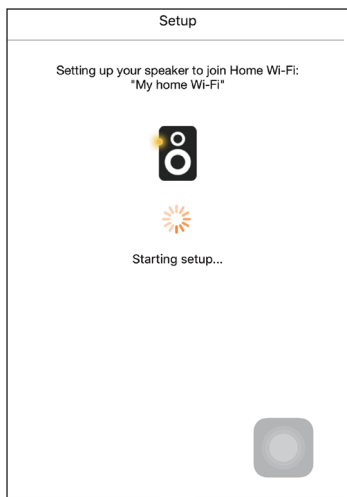


- Press the WPS button on your home Wi-Fi router.





- 5 Wait until the power/status indicator on AW3000 turns solid white, then tap **Next** on the app screen..
- ➔ The following app screen appears.
  - ➔ AW3000 is connected to your home Wi-Fi network successfully.



#### Tip

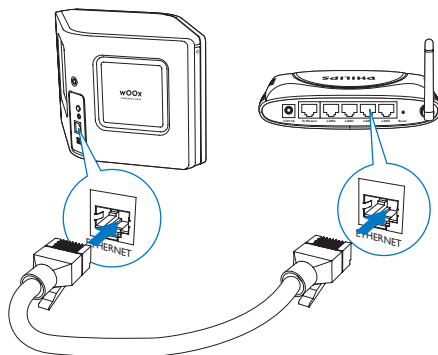
- For some Wi-Fi routers, you may need to hold the WPS button for Wi-Fi connection or enable the WPS PBC function from the router configuration pages. See the user manuals of the specific routers for details.
- After successful network setup, you can tap **Rock n' Roll** on the above app screen to get ready for music play directly. For more details, go to the 'Play' section (see 'Play' on page 16).

## Option 4: Set up wired connection through an Ethernet cable

### Note

- If you use wired connection, you just need to select Speaker already setup on the initial Setup page (see 'Download Philips AirStudio+ Lite to your smartphone or tablets' on page 6).

- 1 If you have tried wireless connection, before setup of wired connection, you need to reset the wireless Hi-Fi speaker (see 'Troubleshooting' on page 24).
- 2 Connect an Ethernet cable (not supplied) to:
  - the **ETHERNET** socket on the back of the device
  - one of the Ethernet ports on your home Wi-Fi router



- 3 Wait until the power/status indicator turns solid white.
  - ➔ AW3000 is connected to your home Wi-Fi network successfully.

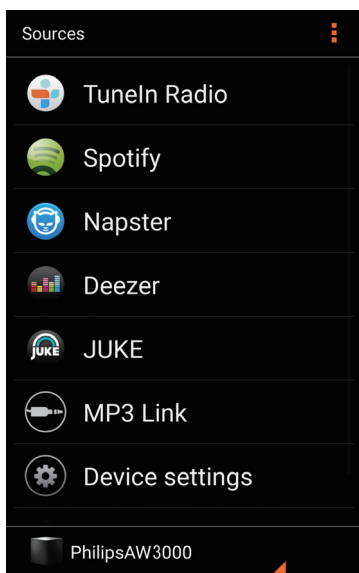
## 5 Play

### Note

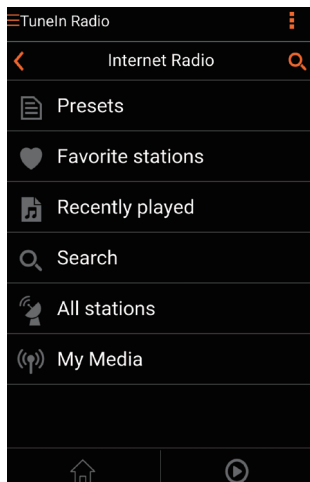
- To stream music to the speaker via DLNA UPnP, use your favorite app from your smartphone or PC/Mac that supports DLNA UPnP.

## Listen to Internet radio stations through AW3000

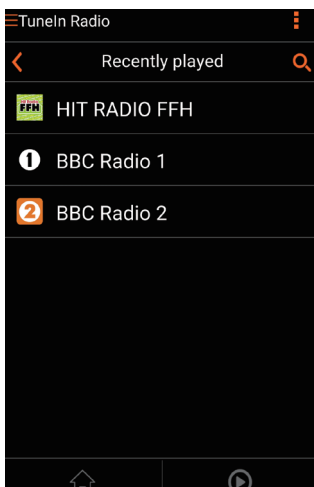
- 1 Run **Philips AirStudio+ Lite** on your iOS or Android smartphone or tablet.




- 2 Search for an Internet radio station by its name or location, language etc.

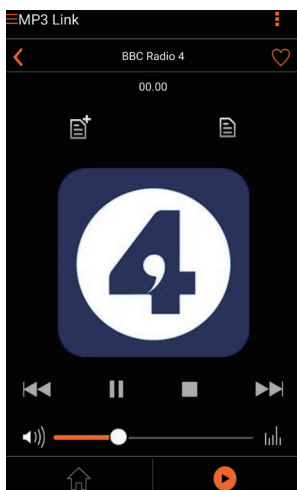


- 3 To tune to an Internet radio station, select and tap its name in the result list.

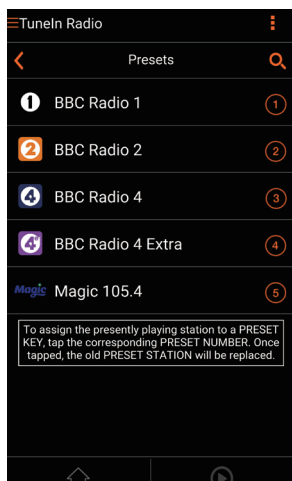


## Preset Internet radio stations

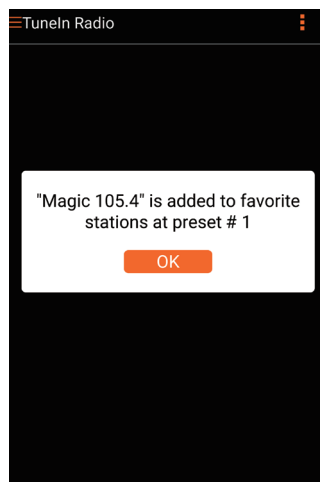
- 1 Tune to an Internet radio station and tap .
  - ➔ A list of preset radio stations appears.



- 2 Tap a row in the list where you want to add the preset station. For example, if you want to assign preset number 2 to this station, tap the second row.
  - ➔ A message pops up, in which the station name and preset number are shown.




- 3 Tap **OK** in the message box to confirm.
  - ➔ The station is added to your list of preset radio stations.



- 4 Repeat the above procedures to add more presets.



### Tip

- You cannot delete a preset radio station directly, but you can replace it with another radio station. For example, if you want to delete a station at preset #3, you can tune to another radio station, tap , and then tap the 3rd row to replace the previous station.

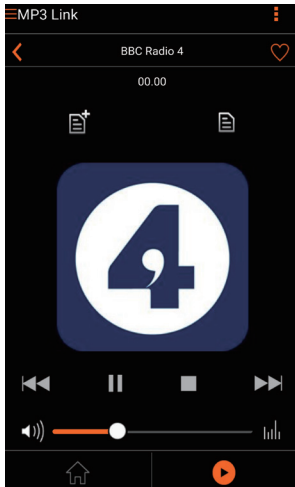
### To tune to a preset radio station

- Press **numeric keys (1-5)** on AW3000 directly to tune to the first five preset radio stations.
- You can also go to **Presets** on the app screen and tap one of your preset stations to start play.

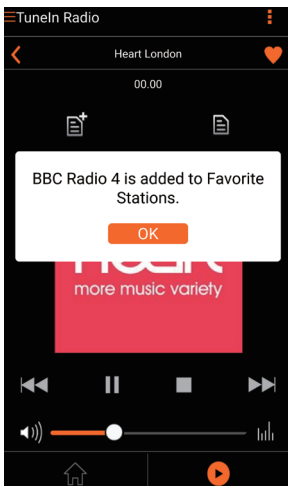
---

## Create your favorite list

- 1 Tune to an Internet radio station.



- 2 Tap ♥ to add the station into your favorite list directly.



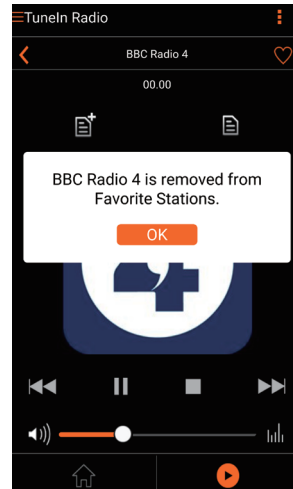
- 3 Repeat the above procedures to add more favorite stations.

### To tune to a favorite radio station

- Go to **Favorite stations** on the app screen and tap one of your favorite stations to start play.

### To delete a favorite radio station

- 1 Tune to the radio station and tap ♥.  
↳ The radio station is removed from your favorite list directly.

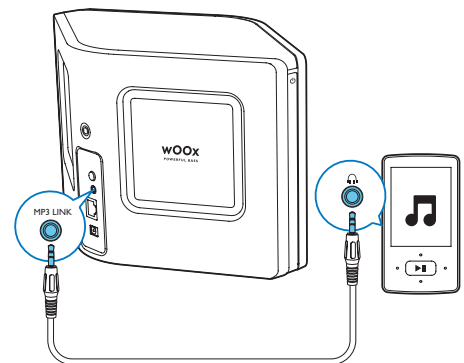


---

## Play from an external device

You can also listen to an external audio player through the device.

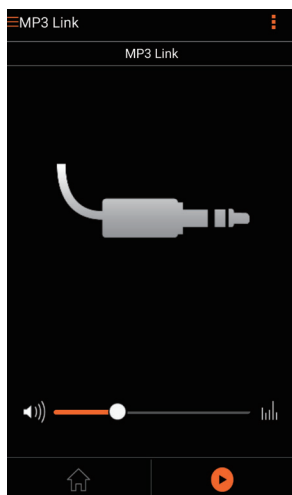
- 1 Connect an MP3 link cable (not supplied) to:
  - the **MP3-LINK** socket on the back of the device.
  - the headphone socket on an external audio player.



- 2 Start play on the external audio player and adjust volume.  
↳ You can hear music from the wireless Hi-Fi speaker.
- 3 Use the controls on your audio player to control music play.

To switch to the MP3 link source manually:

- 1 Run **Philips AirStudio+ Lite** on your iOS or Android smartphone or tablet.
- 2 Tap Services -> **MP3 link** to select the MP3 link source.



## 6 Upgrade firmware

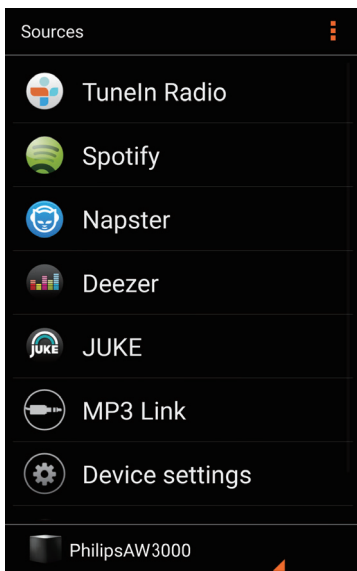
To improve the performance of AW3000, Philips may offer you new firmware for upgrade of your AW3000.



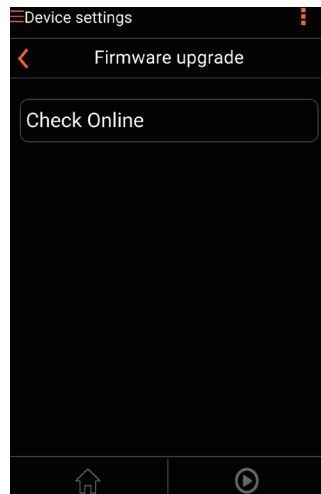
### Warning

- Always connect your AW3000 to AC power for firmware upgrade. Never power off your AW3000 during firmware upgrade.

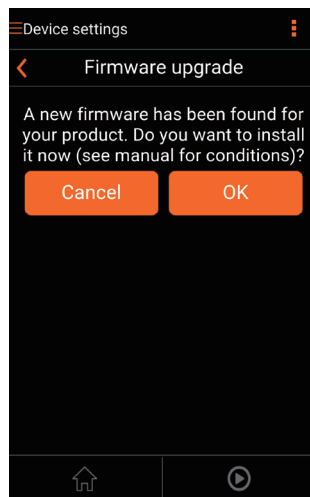
- 1 Make sure that AW3000 is powered on and connected to the same Wi-Fi network as your smartphone or tablet.
- 2 Make sure that your home Wi-Fi network is connected to the Internet.
- 3 Run **Philips AirStudio+ Lite** on your iOS or Android smartphone or tablet.
- 4 Tap **Services** -> **Device settings**.



- 5 Tap **Check online**.  
↳ If a new firmware is available. A firmware upgrade prompt pops up automatically.



- 6 Tap **OK** on the prompt message to start firmware upgrade.  
↳ The power/status indicator on AW3000 flashes amber during this process.



- 7 Wait until the firmware upgrade process finishes, then tap **OK** on the prompt message to restart the device.

# 7 Product information



## Note

- Product information is subject to change without prior notice.

## Specifications

### Amplifier

Rated Output Power	2 X 18 W RMS @ 10% THD
Frequency Response	80 Hz - 18 kHz, $\pm 3$ dB
Signal to Noise Ratio	> 86 dB
MP3 Link	800 mV RMS 20 kohm

### Speakers

Speaker Impedance	8 ohm
Speaker Driver	2 x dome tweeters, 2 x 3.5" woofers
Sensitivity	82 dB/m/W

### Wireless

Wireless standard	802.11b/g
Wireless security	WEP, 10 or 26 hex digit keys WPA (TKIP) or WPA2 (TKIP / AES) with 8 - 40 ASCII printable characters passphrase

Frequency range	2412 - 2462 MHz (CH1-CH11) (for /79, /37, /55, /97) 2412 - 2472 MHz (CH1-CH13) (for /12, /10, /05)
-----------------	---

PBC (one button push)	Yes
-----------------------	-----

## General information

AC power	Input: 100 ~ 240V, 50/60 Hz 2A
<b>PHILIPS</b>	
<b>SWITCHING</b>	Output: 18V $\approx$ 2.5 A

### POWER SUPPLY

#### MODEL:

**EFS05001800250 CE**

Operation Power Consumption	40 W
-----------------------------	------

Power Consumption in Standby Mode	< 0.5 W
-----------------------------------	---------

Dimensions	
- Main Unit (L x W x H)	358 x 137 x 203 mm

Weight	
- With Packing	3.05 kg
- Main Unit	2.1 kg

# 8 Troubleshooting



## Warning

- Never remove the casing of this apparatus.

To keep the warranty valid, never try to repair the system yourself.

If you encounter problems when using this apparatus, check the following points before requesting service. If the problem remains unsolved, go to the Philips web site ([www.philips.com/welcome](http://www.philips.com/welcome)). When you contact Philips, ensure that the apparatus is nearby and the model number and serial number are available.

### No power

- Make sure that the AC power plug of the device is connected properly.
- Make sure that there is power at the AC outlet.
- Check whether the device is in Eco standby mode (see 'Connect power and switch on' on page 7).

### No sound

- Check whether the device is muted. The power/status indicator flashes white when the device is muted. Adjust volume on the Philips AirStudio+ Lite app or on AW3000 directly.
- If you have chosen the wired connection, check whether the Ethernet cable has been connected properly and securely (see 'Option 4: Set up wired connection through an Ethernet cable' on page 15).
- Check the Wi-Fi network connection. Set up the network again if needed (see 'Connect AW3000 to your home Wi-Fi network' on page 9).
- If the audio source is an external audio player, adjust volume on the audio player directly.

### No response from the device

- Restart AW3000, and then set up the Wi-Fi network for AW3000 again (see 'Option 1: Set up wireless connection to a non-WPS router through an iOS device' on page 9).
- Disconnect and reconnect the AC power plug, and then switch on the device again.

### Wi-Fi network connection failed

- This device does not support the WPS-PIN method.
- Enable SSID broadcast on the Wi-Fi router.
- Keep away from potential sources of interference which may affect Wi-Fi signal, such as microwave ovens.
- Make sure that the SSID name of your home router consists of alphanumeric characters, with no space or special characters like %/#/\*/# inserted. The network password should not consist of #/:/!'.
- If you choose to rename your AW3000 manually on the **Philips AirStudio+ Lite** app, do not use special characters or symbols.
- For some new types of Wi-Fi routers, a network name (SSID) may be created automatically when you use WPS for connection. Always change the default network name (SSID) to a simple one that consists of alphanumerical characters, and also change the Wi-Fi security mode to secure your network.

### Wired network connection failed

- If you have tried wireless connection, before setup of wired connection, you need to reset the wireless Hi-Fi speaker. Follow the procedures below to reset the device:



- 1 Unplug the power cord.
- 2 Hold the numeric key 1 and plug the power cord again.
  - ↳ The power/status indicator flashes amber; then turns solid amber; and after a while starts to flash amber again.
- 3 Release the numeric key 1.



#### Note

- Do not release the numeric key 1 until the power/status indicator flashes amber for a second time.

### Occasional breaking of music streaming

Do one or all of the following:

- Move AW3000 closer to your Wi-Fi router.
- Remove any obstacles between AW3000 and your Wi-Fi router.
- Avoid using Wi-Fi channel which is overlapped by the nearby Wi-Fi network.
- Check if your network speed is fast enough (in cases where multiple devices share the same router; the wireless performance may be affected). Turn off the other devices connected to your home router.
- Enable the Quality of Service (QoS) option (if available on the Wi-Fi router).
- Turn off other Wi-Fi routers.

### The power/status indicator remains red. What can I do?

- You need to recover the device with an Ethernet cable.
- 1 Make sure that your router is connected to the Internet.
  - 2 Connect the device to the router through an Ethernet cable (see 'Option 4: Set up wired connection through an Ethernet cable' on page 15).
  - 3 Wait for automatic recovery of the device, which may take up to 10 minutes.

## 9 Appendix 1: Mount the device onto wall



### Caution

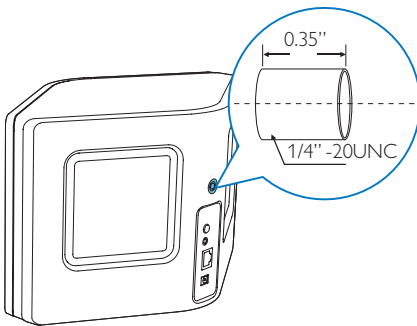
- Risk of product damage! Always consult professional personnel to safely mount the product onto wall.



### Warning

- Risk of injury! Make sure that no supply ducts such as gas, water or electricity are harmed when you drill the holes.

The AW3000 has a  $\frac{1}{4}$ " - 20 UNC (depth: 0.35") mounting hole at the back of the device.



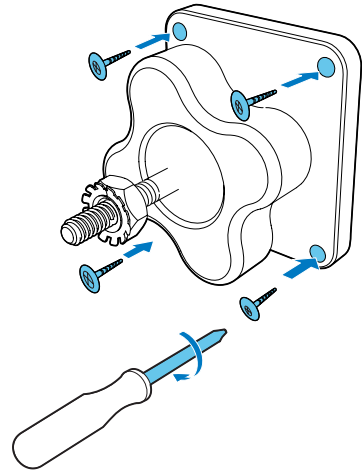
Through this hole, you can easily mount the device onto wall with a suitable mounting bracket. The mounting bracket is not included and you need to purchase one. Please follow the instructions included with your purchased wall mounting bracket.



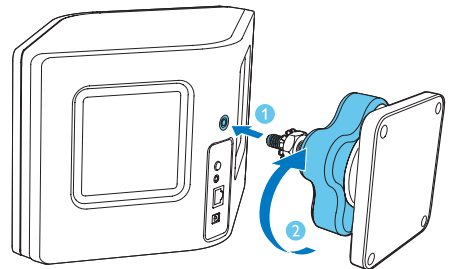
### Note

- The wall mounting bracket described below is for reference only.
- Make sure that the mounting screw of your purchased wall mounting bracket matches the size of the hole at the back of AW3000, that is,  $\frac{1}{4}$  inch (6.75mm).
- Make sure that the wall mounting bracket supports at least 25 lbs (11.3 kg).

- 1 Find a suitable place on a wall and use a pencil to mark the chosen location with your purchased bracket.
- 2 Follow the instructions supplied with the purchased bracket to drill holes as marked.



- 3 Insert the mounting screw on the bracket into the hole at the back of AW3000, then turn the rotating handle to tighten the screw.



# 10 Appendix 2:

## Understand meanings of LED colors

LED color	Meaning
Blinking amber	The speaker is booting up or firmware upgrade is in progress.
Solid amber	The speaker is not connected to any network.
White and amber alternately	The speaker is in wireless setup mode, assisted by the AirStudio app. Follow the set-up instructions on the app.
Green and amber alternately	Wireless setup by the WPS method has been triggered or is ongoing.
Solid white	The speaker is connected to a Wi-Fi network and is ready for wireless music streaming.
Blinking white	The speaker is muted.
Solid green	The speaker is in normal standby mode (see 'Connect power and switch on' on page 7).
Solid red	The speaker is malfunctioning. You need to recover the speaker (see 'Troubleshooting' on page 24).

## **AW3000 Device Terms & Conditions of Use**

These Device Terms and Conditions of Use are a legal agreement between you and Gibson Innovations Limited, a Hong Kong company with a registered office at 5 Science Park East Avenue, Hong Kong Science Park, Shatin, New Territories, Hong Kong and its affiliated companies (individually and collectively “Gibson Innovations”).

### **Terms and Conditions of Use**

Congratulations on your purchase of a **AW3000** (“Device”). These Terms and Conditions of Use give you the rights to use certain features on your Device. You must agree to these Terms and Conditions of Use before using the Device. Your use of the Device constitutes your agreement to be bound by these Terms and Conditions of Use and will give you the right to access these features. If you do not agree to these Terms and Conditions of Use, you may return your Device to the point of purchase. These Terms and Conditions of Use supplement, and do not replace, any terms, conditions or disclaimers which were provided with your purchase of the Device. If you use the accompanying **AW3000** (the “Software”) together with the Device, you will also must also agree to the separate Software End-User License Agreement. All such terms, conditions and disclaimers remain in full force and effect.

### **Eligibility for Registration.**

You must be at least 14 years of age to assume the responsibilities of these Terms and Conditions of Use. If you are under 14 years of age, you may not use the Device unless one of your parents or legal guardians assumes the responsibilities of these Terms and Conditions of Use. Your use of the Device constitutes your representation that you are either 14 years of age or, if you are under 14 years of age, that your parent or legal guardian has assumed the responsibilities of these Terms and Conditions of Use.

### **Restrictions on Modification of your Device**

You agree not to tamper with or otherwise modify or attempt to modify the Device in any way (including through the use of software or by making physical alterations to the Device). You agree that you will not circumvent or attempt to circumvent technological measures employed to control access to, or the rights in, any content. You agree that you will not circumvent or attempt to circumvent any copy management system by any means. You agree that you will not decipher or attempt to decipher cryptographic keys or otherwise defeat or attempt to defeat any security features implemented in the Device or in the content. You agree that you will not use the Device for any unauthorized purpose or in contravention of any law or regulation.

### **Disclaimers Regarding Content**

The content which is accessible through your Device may not be controlled or programmed by Gibson Innovations. GIBSON INNOVATIONS IS NOT LIABLE FOR CONTENT OR ITS NATURE OR DELIVERY. GIBSON INNOVATIONS DOES NOT ENDORSE ANY OPINIONS EXPRESSED IN ANY CONTENT RECEIVED THROUGH YOUR DEVICE. GIBSON INNOVATIONS DOES NOT GUARANTEE THE TRUTHFULNESS, ACCURACY, RELIABILITY, COMPLETENESS OR TIMELINESS OF CONTENT. YOU AGREE THAT ANY RELIANCE ON CONTENT IS AT YOUR OWN RISK.

## **Limitations on Access to Content**

Gibson Innovations does not guarantee access to any particular content. Gibson Innovations may, in its discretion, add or remove access to any content at any time. Gibson Innovations does not guarantee continued access to any specific online service provider. Gibson Innovations may, in its discretion, add or remove access to any specific online service provider.

## **Rights in Content**

Content may be protected by copyright laws or other intellectual property or proprietary laws. In some situations, such as use of the Device in a commercial environment, it may be necessary for you to obtain, at your own risk, a license or other authorization to use such content. You agree that, in the event such a license or authorization is necessary, it is your responsibility to obtain any such license or authorization. You agree that you are solely liable for any damages you may incur resulting from your failure to obtain the proper license or authorization for use of the content accessible through the Device. You agree that Gibson Innovations will have no liability to you with regard to your use of the content.

## **Changes in Features**

Gibson Innovations may, in its discretion, change the features of the Device, including adding features to, or removing features from, the Device. Some new features may require changes to these Terms and Conditions of Use. Your use of those new features will constitute your agreement to the revised Terms and Conditions of Use.

## **Software and Intellectual Property Rights**

You may need to use certain software programs to use or have full access to certain features of the Device. You received certain software with the purchase of the Device and may receive other software from time to time in the future. Most of that software is contained in the Device and is not accessible to you. Some of that software is owned by Gibson Innovations and some is owned by others. Your use of software owned by Gibson Innovations is subject to these Terms and Conditions of Use and any applicable license agreement. Your use of software owned by others is governed by their applicable license agreements. Your use of software does not transfer any title or ownership rights in the software to you. Gibson Innovations, its affiliates and their licensors retain all their respective rights in software and other intellectual property, including copyrights, patent rights, and rights in its trademarks and trade names. Philips and the Philips' Shield Emblem are registered trademarks of Koninklijke Philips N.V. and are used by Gibson Innovations under license from Koninklijke Philips N.V. You agree that you will not disassemble, decompile, create derivative works of, reverse engineer, modify, sublicense, distribute the software or use the software for any unauthorized purpose or in contravention of any law or regulation.

## **Privacy and your personal information**

Gibson Innovations believes strongly in protecting the privacy of the personal data you share with us. Any processing of personal data through the Device, including its hardware, related software or websites under the control of Gibson Innovations, is subject to the Gibson Innovations privacy notice. We may share your personal data with service providers, business partners and other third parties in accordance with applicable law. It is important that you read and understand the privacy notice of Gibson Innovations at <http://www.gibsoninnovations.com/en/privacy-notice>.

## **Warranty Disclaimer**

GIBSON INNOVATIONS MAKES NO REPRESENTATION OR WARRANTY, EXPRESS OR IMPLIED, THAT THE DEVICE WILL MEET YOUR REQUIREMENTS OR THAT THE USE OF THE DEVICE WILL BE UNINTERRUPTED, TIMELY, SECURE OR FREE FROM ERRORS. GIBSON INNOVATIONS MAKES NO WARRANTY AS TO THE CONTENT CARRIED IN ANY STREAM. GIBSON INNOVATIONS MAKES NO REPRESENTATION OR WARRANTY, EXPRESS OR IMPLIED, AS TO THE INFORMATION OR CONTENT ACCESSED THROUGH YOUR DEVICE OR TO YOUR RELIANCE ON, OR USE OF, ANY INFORMATION OR CONTENT ACCESSED THROUGH YOUR DEVICE. SPECIFIC WARRANTIES WERE PROVIDED WITH YOUR PURCHASE OF YOUR DEVICE AND THOSE WARRANTIES, INCLUDING ANY DISCLAIMERS TO THOSE WARRANTIES, CONTINUE TO APPLY. Because some jurisdictions do not permit the disclaimer of implied warranties, such disclaimers may not apply to you.

## **Limitation of Liability**

GIBSON INNOVATIONS WILL NOT BE LIABLE TO YOU OR TO ANY OTHER PARTY FOR ANY INDIRECT, INCIDENTAL, PUNITIVE, SPECIAL OR CONSEQUENTIAL DAMAGES (INCLUDING LOST PROFITS OR LOST SAVINGS) OR FOR LOSS OF DATA OR BUSINESS INTERRUPTION ARISING OUT OF OR RELATING TO YOUR USE OF THE DEVICE WHETHER OR NOT SUCH DAMAGES ARE BASED ON TORT, WARRANTY, CONTRACT OR ANY OTHER LEGAL THEORY - EVEN IF GIBSON INNOVATIONS HAS BEEN ADVISED, OR IS AWARE, OF THE POSSIBILITY OF SUCH DAMAGES. IN NO EVENT WILL GIBSON INNOVATIONS CUMULATIVE LIABILITY FOR DAMAGE (FROM ANY CAUSE WHATSOEVER) EXCEED THE AMOUNT YOU PAID FOR YOUR DEVICE.

## **Miscellaneous**

This agreement will be governed by the laws of the jurisdiction in which the Device was sold and you hereby consent to the non-exclusive jurisdiction of courts in the relevant country. If any provision of this agreement is invalid or unenforceable under applicable law, such provision will be deemed modified to the extent necessary to render such provision valid and enforceable and the other provisions of this agreement will remain in full force and effect. These Terms and Conditions of Use will not be governed by the United Nations Convention of Contracts for the International Sale of Goods, the application of which is hereby expressly waived.

BY USING YOUR DEVICE, YOU REPRESENT THAT YOU HAVE READ AND UNDERSTOOD THESE TERMS AND CONDITIONS OF USE AND THAT YOU ACCEPT THEM.

## **SOFTWARE END USER LICENSE AGREEMENT**

THIS SOFTWARE END USER LICENSE AGREEMENT ("THIS AGREEMENT") IS A LEGAL AND BINDING AGREEMENT BETWEEN YOU (EITHER AN INDIVIDUAL OR ENTITY) AND GIBSON INNOVATIONS LIMITED, A HONG KONG COMPANY WITH A REGISTERED OFFICE AT 5 SCIENCE PARK EAST AVENUE, HONG KONG SCIENCE PARK, SHATIN, NEW TERRITORIES, HONG KONG AND ITS AFFILIATED COMPANIES (INDIVIDUALLY AND COLLECTIVELY "GIBSON INNOVATIONS"). THIS AGREEMENT GIVES YOU THE RIGHT TO USE **AW3000** AND RELATED SOFTWARE (THE "SOFTWARE") INCLUDING USER DOCUMENTATION IN ELECTRONIC FORM WHICH MAY HAVE BEEN PROVIDED SEPARATELY OR TOGETHER WITH A GIBSON INNOVATIONS PRODUCT (THE "DEVICE") OR A MOBILE PHONE OR TABLET. BY DOWNLOADING, INSTALLING OR OTHERWISE USING THE SOFTWARE, YOU ACCEPT AND AGREE TO BE BOUND BY ALL OF THE TERMS AND CONDITIONS OF THIS AGREEMENT. IF YOU DO NOT AGREE TO THESE TERMS AND CONDITIONS, DO NOT DOWNLOAD, INSTALL OR OTHERWISE USE THE SOFTWARE. IF YOU ACQUIRED THE SOFTWARE IN TANGIBLE MEDIA E.G. CD WITHOUT THE OPPORTUNITY TO REVIEW THIS LICENSE AND DO NOT ACCEPT THESE TERMS, YOU MAY RECEIVE A

FULL REFUND OF THE AMOUNT, IF ANY, THAT YOU PAID FOR THE SOFTWARE WITHIN 30 DAYS FROM THE DATE OF PURCHASE WITH PROOF OF PAYMENT.

### **1. Grant of License.**

This Agreement grants you a non-exclusive, nontransferable, non-sub licensable license to install and use, on the Device or a mobile phone or tablet, as applicable, one (1) copy of the specified version of the Software in object code format as set out in the user documentation solely for your personal use. The Software is “in use” when it is loaded into your mobile phone or tablet or the Device.

### **2. Ownership.**

The Software is licensed and not sold to you. This Agreement grants you only the right to use the Software, but you do not acquire any rights, express or implied, in the Software other than those specified in this Agreement. GIBSON Innovations and its licensors retain all right, title, and interest in and to the Software, including all patents, copyrights, trade secrets, and other intellectual property rights incorporated therein. The Software is protected by copyright laws, international treaty provisions, and other intellectual property laws. Therefore, other than as expressly set forth herein, you may not copy the Software without prior written authorization of GIBSON Innovations, except that you may make one (1) copy of the Software for your back-up purposes only. You may not copy any printed materials accompanying the Software, nor print more than one (1) copy of any user documentation provided in electronic form, except that you may make one (1) copy of such printed materials for your back-up purposes only.

### **3. License Restrictions.**

Except as provided otherwise herein, you shall not rent, lease, sublicense, sell, assign, loan, or otherwise transfer the Software. You shall not, and you shall not permit any third party, to reverse engineer, decompile, or disassemble the Software, except to the extent that applicable law expressly prohibits the foregoing restriction. You may not remove or destroy any product identification, copyright notices, or other proprietary markings or restrictions from the Software. All titles, trademarks, and copyright and restricted rights notices shall be reproduced on your back up copy of the Software. You may not modify or adapt the Software, merge the Software into another program or create derivative works based upon the Software.

### **4. Open Source Software.**

- (a) This software may contain components that are subject to open-source terms, as stated in the documentation accompanying the Device. This Agreement does not apply to this software as such.
- (b) Your license rights under this Agreement do not include any right or license to use, distribute or create derivative works of the Software in any manner that would subject the Software to Open Source Terms. “Open Source Terms” means the terms of any license that directly or indirectly (1) create, or purport to create, obligations for Gibson Innovations with respect to the Software and/or derivative works thereof; or (2) grant, or purport to grant, to any third party any rights or immunities under intellectual property or proprietary rights in the Software or derivative works thereof.

### **5. Termination.**

This Agreement shall be effective upon installation or first use of the Software and shall terminate (i) at the discretion of Gibson Innovations, due to your failure to comply with any term of this

Agreement; or (ii) upon destruction of all copies of the Software and related materials provided to you by Gibson Innovations hereunder. Gibson Innovations' rights and your obligations shall survive the termination of this Agreement.

## **6. Upgrades.**

Gibson Innovations may, at its sole option, make upgrades to the Software available by general posting on a website or by any other means or methods. Such upgrades may be made available pursuant to the terms of this Agreement or the release of such upgrades to you may be subject to your acceptance of another agreement. By using the Software, you consent to us collecting and using technical information about the Device and Software to improve our products and to provide any services to you.

## **7. Support Services.**

Gibson Innovations is not obligated to provide technical or other support ("Support Services") for the Software. If Gibson Innovations does provide you with Support Services, these will be governed by separate terms to be agreed between you and Gibson Innovations.

## **8. Limited Software Warranty.**

Gibson Innovations provides the Software 'as is' and without any warranty except that the Software will perform substantially in accordance with the documentation accompanying the Software for a period of one year after your first download, installation or use of the Software, whichever occurs first. Gibson Innovations' entire liability and your exclusive remedy for breach of this warranty shall be, at Gibson Innovations' option, either (i) return of the price paid by you for the Software (if any); or (b) repair or replacement of the Software that does not meet the warranty set forth herein and that is returned to Gibson Innovations with a copy of your receipt. This limited warranty shall be void if failure of the Software has resulted from any accident, abuse, misuse or wrongful application. Any replacement Software will be warranted for the remainder of the original warranty period or thirty (30) days, whichever is longer. This limited warranty shall not apply to you if the Software was provided to you free of charge on an evaluation only basis.

## **9. NO OTHER WARRANTIES.**

EXCEPT AS SET FORTH ABOVE, GIBSON INNOVATIONS AND ITS LICENSORS DO NOT WARRANT THAT THE SOFTWARE WILL OPERATE ERROR FREE OR UNINTERRUPTED, OR WILL MEET YOUR REQUIREMENTS. YOU ASSUME ALL RESPONSIBILITIES FOR SELECTION OF THE SOFTWARE TO ACHIEVE YOUR INTENDED RESULTS, AND FOR THE INSTALLATION OF, USE OF, AND RESULTS OBTAINED FROM THE SOFTWARE. TO THE MAXIMUM EXTENT PERMITTED BY APPLICABLE LAW, GIBSON INNOVATIONS AND ITS LICENSORS DISCLAIM ALL WARRANTIES AND CONDITIONS, WHETHER EXPRESS OR IMPLIED, INCLUDING BUT NOT LIMITED TO THE IMPLIED WARRANTIES OF MERCHANTABILITY, FITNESS FOR A PARTICULAR PURPOSE, AND ACCURACY OR COMPLETENESS OF RESULTS WITH RESPECT TO THE SOFTWARE AND THE ACCOMPANYING MATERIALS. THERE IS NO WARRANTY AGAINST INFRINGEMENT. GIBSON INNOVATIONS DOES NOT WARRANT THAT YOU WILL BE ABLE TO DOWNLOAD, COPY, STORE, DISPLAY, TRANSFER, AND/OR PLAY SECURE CONTENT.

## **10. LIMITATION OF LIABILITY.**

UNDER NO CIRCUMSTANCES WILL GIBSON INNOVATIONS OR ITS LICENSORS BE LIABLE FOR ANY



CONSEQUENTIAL, SPECIAL, INDIRECT, INCIDENTAL OR PUNITIVE DAMAGES WHATSOEVER, INCLUDING, WITHOUT LIMITATION, DAMAGES FOR LOSS OF PROFITS OR REVENUES, BUSINESS INTERRUPTION, LOSS OF BUSINESS INFORMATION, LOSS OF DATA, LOSS OF USE OR OTHER PECUNIARY LOSS, EVEN IF GIBSON INNOVATIONS OR ITS LICENSORS HAVE BEEN ADVISED OF THE POSSIBILITY OF SUCH DAMAGES. YOU ACKNOWLEDGE THAT YOU MAY BE CHARGED BY YOUR MOBILE SERVICE PROVIDERS FOR INTERNET ACCESS IN CONNECTION WITH USE OF THE SOFTWARE, AND YOU ACCEPT RESPONSIBILITY FOR ANY SUCH CHARGES. IN NO EVENT SHALL GIBSON INNOVATIONS' OR ITS LICENSORS' AGGREGATE LIABILITY FOR DAMAGES ARISING OUT OF THIS AGREEMENT EXCEED THE GREATER OF THE PRICE ACTUALLY PAID BY YOU FOR THE SOFTWARE.

#### **11. Trademarks.**

Certain of the product and other names used in this Agreement, the Software, and the printed user documentation may constitute trademarks of Gibson Innovations, its licensors or other third parties. Philips and the Philips' Shield Emblem are registered trademarks of Koninklijke Philips N.V. and are used by Gibson Innovations under license from Koninklijke Philips N.V. You are not authorized to use any such trademarks.

#### **12. Export Administration.**

You agree that you will not directly or indirectly, export or re-export the Software to any country for which the United States Export Administration Act, or any similar United States law or regulation requires an export license or other U.S. Government approval, unless the appropriate export license or approval has first been obtained. By downloading or installing the Software you agree to abide by this Export provision.

#### **13. Governing law.**

This Agreement is governed by the laws of your country of residence, without reference to its conflict of laws principles. Any dispute between you and Gibson Innovations regarding this Agreement shall be subject to the non-exclusive jurisdiction of the courts of your country of residence.

#### **14. General.**

This Agreement, together with the Device End User License Agreement, contains the entire agreement between you and Gibson Innovations and supersedes any prior representation, undertaking or other communication or advertising with respect to the Software and user documentation. If any part of this Agreement is held invalid, the remainder of this Agreement will continue in full force and effect. This Agreement shall not prejudice the statutory rights of any party dealing as a consumer.

## Open Source Software Notice

Those software identified from Gibson Innovations Limited contain the open source software details below. Please refer to the indicated open source licenses for the terms and conditions of their use.

### Linux Kernel v2.6.30.9

NOTE! This copyright does *\*not\** cover user programs that use kernel services by normal system calls - this is merely considered normal use of the kernel, and does *\*not\** fall under the heading of "derived work". Also note that the GPL below is copyrighted by the Free Software Foundation, but the instance of code that it refers to (the Linux kernel) is copyrighted by me and others who actually wrote it.

Also note that the only valid version of the GPL as far as the kernel is concerned is this particular version of the license (ie v2, not v2.2 or v3.x or whatever), unless explicitly otherwise stated.

Linus Torvalds

-----

BOA v0.94 14rc21

/\*

\* Boa, an http server

\* Copyright (C) 1995 Paul Phillips <paulp@go2net.com>

\*

\* This program is free software; you can redistribute it and/or modify

\* it under the terms of the GNU General Public License as published by

\* the Free Software Foundation; either version 1, or (at your option)  
\* any later version.  
\*  
\* This program is distributed in the hope that it will be useful,  
\* but WITHOUT ANY WARRANTY; without even the implied warranty of  
\* MERCHANTABILITY or FITNESS FOR A PARTICULAR PURPOSE. See the  
\* GNU General Public License for more details.  
\*  
\* You should have received a copy of the GNU General Public License  
\* along with this program; if not, write to the Free Software  
\* Foundation, Inc., 675 Mass Ave, Cambridge, MA 02139, USA.  
\*  
\*/

-----  
bridge-utils v0.9.5

/\*  
\* Copyright (C) 2000 Lennert Buytenhek  
\*  
\* This program is free software; you can redistribute it and/or  
\* modify it under the terms of the GNU General Public License as  
\* published by the Free Software Foundation; either version 2 of the  
\* License, or (at your option) any later version.  
\*  
\* This program is distributed in the hope that it will be useful, but  
\* WITHOUT ANY WARRANTY; without even the implied warranty of  
\* MERCHANTABILITY or FITNESS FOR A PARTICULAR PURPOSE. See the GNU  
\* General Public License for more details.

\*

\* You should have received a copy of the GNU General Public License

\* along with this program; if not, write to the Free Software

\* Foundation, Inc., 675 Mass Ave, Cambridge, MA 02139, USA.

\*/

-----

busybox v1.13

\* Copyright (C) 1997 Theodore Ts'o.

\*

\* %Begin-Header%

\* This file may be redistributed under the terms of the GNU Public

\* License.

-----

libnl v1.1

\* This library is free software; you can redistribute it and/or

\* modify it under the terms of the GNU Lesser General Public

\* License as published by the Free Software Foundation version 2.1

\* of the License.

\*

\* Copyright (c) 2003-2011 Thomas Graf <tgraf@suug.ch>

\*/

-----

lzma v4.65

<http://7-zip.org/sdk.html>

LZMA SDK is placed in the public domain.

-----

squashfs v4.0

GNU GENERAL PUBLIC LICENSE Version 2 (see GNU General Public License (GPL) v2)

-----

udhcp v0.9.9

# Copyright (C) 1999-2004 by Erik Andersen <andersen at codepoet.org>

#

-# This program is free software; you can redistribute it and/or modify

-# it under the terms of the GNU General Public License as published by

-# the Free Software Foundation; either version 2 of the License, or

-# (at your option) any later version.

-#

-# This program is distributed in the hope that it will be useful,

-# but WITHOUT ANY WARRANTY; without even the implied warranty of

-# MERCHANTABILITY or FITNESS FOR A PARTICULAR PURPOSE. See the GNU

-# General Public License for more details.

-#

-# You should have received a copy of the GNU General Public License

-# along with this program; if not, write to the Free Software

-# Foundation, Inc., 59 Temple Place, Suite 330, Boston, MA 02111-1307 USA

-#

+# Licensed under GPLv2 or later, see file LICENSE in this tarball for details.

-----  
wireless\_tools v25

- \* This files is released under the GPL license.
- \* Copyright (c) 1997-2002 Jean Tourrilhes <jt@hpl.hp.com>

-----  
zlib v1.2.3

Copyright (C) 1995-1998 Jean-loup Gailly and Mark Adler

This software is provided 'as-is', without any express or implied warranty. In no event will the authors be held liable for any damages arising from the use of this software.

Permission is granted to anyone to use this software for any purpose, including commercial applications, and to alter it and redistribute it freely, subject to the following restrictions:

The origin of this software must not be misrepresented; you must not claim that you wrote the original software. If you use this software in a product, an acknowledgment in the product documentation would be appreciated but is not required.

Altered source versions must be plainly marked as such, and must not be misrepresented as being the original software.

This notice may not be removed or altered from any source distribution.

Jean-loup Gailly Mark Adler

jloup@gzip.org madler@alumni.caltech.edu

-----  
Opus v0.1.9

/\* Copyright (c) 2002-2007 Jean-Marc Valin  
Copyright (c) 2008 CSIRO  
Copyright (c) 2007-2013 Xiph.Org Foundation  
File: opusdec.c

Redistribution and use in source and binary forms, with or without  
modification, are permitted provided that the following conditions  
are met:

- Redistributions of source code must retain the above copyright  
notice, this list of conditions and the following disclaimer.
- Redistributions in binary form must reproduce the above copyright  
notice, this list of conditions and the following disclaimer in the  
documentation and/or other materials provided with the distribution.

THIS SOFTWARE IS PROVIDED BY THE COPYRIGHT HOLDERS AND CONTRIBUTORS  
``AS IS" AND ANY EXPRESS OR IMPLIED WARRANTIES, INCLUDING, BUT NOT  
LIMITED TO, THE IMPLIED WARRANTIES OF MERCHANTABILITY AND FITNESS FOR  
A PARTICULAR PURPOSE ARE DISCLAIMED. IN NO EVENT SHALL THE FOUNDATION OR  
CONTRIBUTORS BE LIABLE FOR ANY DIRECT, INDIRECT, INCIDENTAL, SPECIAL,  
EXEMPLARY, OR CONSEQUENTIAL DAMAGES (INCLUDING, BUT NOT LIMITED TO,  
PROCUREMENT OF SUBSTITUTE GOODS OR SERVICES; LOSS OF USE, DATA, OR  
PROFITS; OR BUSINESS INTERRUPTION) HOWEVER CAUSED AND ON ANY THEORY OF  
LIABILITY, WHETHER IN CONTRACT, STRICT LIABILITY, OR TORT (INCLUDING  
NEGLIGENCE OR OTHERWISE) ARISING IN ANY WAY OUT OF THE USE OF THIS

SOFTWARE, EVEN IF ADVISED OF THE POSSIBILITY OF SUCH DAMAGE.

\*/

---

## GNU GENERAL PUBLIC LICENSE

Version 2, June 1991

Copyright (C) 1989, 1991 Free Software Foundation, Inc.

51 Franklin Street, Fifth Floor, Boston, MA 02110-1301, USA

Everyone is permitted to copy and distribute verbatim copies  
of this license document, but changing it is not allowed.

### Preamble

The licenses for most software are designed to take away your freedom to share and change it. By contrast, the GNU General Public License is intended to guarantee your freedom to share and change free software--to make sure the software is free for all its users. This General Public License applies to most of the Free Software Foundation's software and to any other program whose authors commit to using it. (Some other Free Software Foundation software is covered by the GNU Lesser General Public License instead.) You can apply it to your programs, too.

When we speak of free software, we are referring to freedom, not price. Our General Public Licenses are designed to make sure that you have the freedom to distribute copies of free software (and charge for this service if you wish), that you receive source code or can get it if you want it, that you can change the software or use pieces of it in new free programs; and that you know you can do these things.

To protect your rights, we need to make restrictions that forbid anyone to deny you these rights or to ask you to surrender the rights. These restrictions translate to certain responsibilities for you if you distribute copies of the software, or if you modify it.



For example, if you distribute copies of such a program, whether gratis or for a fee, you must give the recipients all the rights that you have. You must make sure that they, too, receive or can get the source code. And you must show them these terms so they know their rights.

We protect your rights with two steps: (1) copyright the software, and (2) offer you this license which gives you legal permission to copy, distribute and/or modify the software.

Also, for each author's protection and ours, we want to make certain that everyone understands that there is no warranty for this free software. If the software is modified by someone else and passed on, we want its recipients to know that what they have is not the original, so that any problems introduced by others will not reflect on the original authors' reputations.

Finally, any free program is threatened constantly by software patents. We wish to avoid the danger that redistributors of a free program will individually obtain patent licenses, in effect making the program proprietary. To prevent this, we have made it clear that any patent must be licensed for everyone's free use or not licensed at all.

The precise terms and conditions for copying, distribution and modification follow.

## TERMS AND CONDITIONS FOR COPYING, DISTRIBUTION AND MODIFICATION

0. This License applies to any program or other work which contains a notice placed by the copyright holder saying it may be distributed under the terms of this General Public License. The "Program", below, refers to any such program or work, and a "work based on the Program" means either the Program or any derivative work under copyright law: that is to say, a work containing the Program or a portion of it, either verbatim or with modifications and/or translated into another language. (Hereinafter, translation is included without limitation in the term "modification".) Each licensee is addressed as "you".

Activities other than copying, distribution and modification are not covered by this License; they are outside its scope. The act of running the Program is not restricted, and the output from the Program is covered only if its contents constitute a work based on the Program (independent of having been made by running the Program). Whether that is true depends on what the Program does.

1. You may copy and distribute verbatim copies of the Program's source code as you receive it, in any medium, provided that you conspicuously and appropriately publish on each copy an appropriate copyright notice and disclaimer of warranty; keep intact all the notices that refer to this License and to the absence of any warranty; and give any other recipients of the Program a copy of this License along with the Program.

You may charge a fee for the physical act of transferring a copy, and you may at your option offer warranty protection in exchange for a fee.

2. You may modify your copy or copies of the Program or any portion of it, thus forming a work based on the Program, and copy and distribute such modifications or work under the terms of Section 1 above, provided that you also meet all of these conditions:

a) You must cause the modified files to carry prominent notices stating that you changed the files and the date of any change.

b) You must cause any work that you distribute or publish, that in whole or in part contains or is derived from the Program or any part thereof, to be licensed as a whole at no charge to all third parties under the terms of this License.

c) If the modified program normally reads commands interactively when run, you must cause it, when started running for such interactive use in the most ordinary way, to print or display an announcement including an appropriate copyright notice and a notice that there is no warranty (or else, saying that you provide a warranty) and that users may redistribute the program under these conditions, and telling the user how to view a copy of this License. (Exception: if the Program itself is interactive but does not normally print such an announcement, your work based on the Program is not required to print an announcement.)

These requirements apply to the modified work as a whole. If identifiable sections of that work are not derived from the Program, and can be reasonably considered independent and separate works in themselves, then this License, and its terms, do not apply to those sections when you distribute them as separate works. But when you distribute the same sections as part of a whole which is a work based on the Program, the distribution of the whole must be on the terms of this License, whose permissions for other licensees extend to the entire whole, and thus to each and every part regardless of who wrote it.

Thus, it is not the intent of this section to claim rights or contest your rights to work written entirely by you; rather, the intent is to exercise the right to control the distribution of derivative or collective works based on the Program.

In addition, mere aggregation of another work not based on the Program with the Program (or with a work based on the Program) on a volume of a storage or distribution medium does not bring the other work under the scope of this License.

3. You may copy and distribute the Program (or a work based on it, under Section 2) in object code or executable form under the terms of Sections 1 and 2 above provided that you also do one of the following:

- a) Accompany it with the complete corresponding machine-readable source code, which must be distributed under the terms of Sections 1 and 2 above on a medium customarily used for software interchange; or,
- b) Accompany it with a written offer, valid for at least three years, to give any third party, for a charge no more than your cost of physically performing source distribution, a complete machine-readable copy of the corresponding source code, to be distributed under the terms of Sections 1 and 2 above on a medium customarily used for software interchange; or,
- c) Accompany it with the information you received as to the offer to distribute corresponding source code. (This alternative is allowed only for noncommercial distribution and only if you received the program in object code or executable form with such an offer, in accord with Subsection b above.)

The source code for a work means the preferred form of the work for making modifications to it. For an executable work, complete source code means all the source code for all modules it contains, plus any associated interface definition files, plus the scripts used to control compilation and installation of the executable. However, as a special exception, the source code distributed need not include anything that is normally distributed (in either source or binary form) with the major components (compiler, kernel, and so on) of the operating system on which the executable runs, unless that component itself accompanies the executable.

If distribution of executable or object code is made by offering access to copy from a designated place, then offering equivalent access to copy the source code from the same place counts as distribution of the source code, even though third parties are not compelled to copy the source along with the object code.

4. You may not copy, modify, sublicense, or distribute the Program except as expressly provided under this License. Any attempt otherwise to copy, modify, sublicense or distribute the Program is void, and will automatically terminate your rights under this License. However, parties who have received copies, or rights, from you under this License will not have their licenses terminated so long as such parties remain in full compliance.

5. You are not required to accept this License, since you have not signed it. However, nothing else grants you permission to modify or distribute the Program or its derivative works. These actions are prohibited by law if you do not accept this License. Therefore, by modifying or distributing the Program (or any work based on the Program), you indicate your acceptance of this License to do so, and all its terms and conditions for copying, distributing or modifying the Program or works based on it.

6. Each time you redistribute the Program (or any work based on the Program), the recipient automatically receives a license from the original licensor to copy, distribute or modify the Program subject to these terms and conditions. You may not impose any further restrictions on the recipients' exercise of the rights granted herein. You are not responsible for enforcing compliance by third parties to this License.

7. If, as a consequence of a court judgment or allegation of patent infringement or for any other reason (not limited to patent issues), conditions are imposed on you (whether by court order, agreement or otherwise) that contradict the conditions of this License, they do not excuse you from the conditions of this License. If you cannot distribute so as to satisfy simultaneously your obligations under this License and any other pertinent obligations, then as a consequence you may not distribute the Program at all. For example, if a patent license would not permit royalty-free redistribution of the Program by all those who receive copies directly or indirectly through you, then the only way you could satisfy both it and this License would be to refrain entirely from distribution of the Program.

If any portion of this section is held invalid or unenforceable under any particular circumstance, the balance of the section is intended to apply and the section as a whole is intended to apply in other circumstances.

It is not the purpose of this section to induce you to infringe any patents or other property right claims or to contest validity of any such claims; this section has the sole purpose of protecting the integrity of the free software distribution system, which is implemented by public license practices. Many people have made generous contributions to the wide range of software distributed through that system in reliance on consistent application of that system; it is up to the author/donor to decide if he or she is willing to distribute software through any other system and a licensee cannot impose that choice.

This section is intended to make thoroughly clear what is believed to be a consequence of the rest of this License.

8. If the distribution and/or use of the Program is restricted in certain countries either by patents or by copyrighted interfaces, the original copyright holder who places the Program under this License may add an explicit geographical distribution limitation excluding those countries, so that distribution is

permitted only in or among countries not thus excluded. In such case, this License incorporates the limitation as if written in the body of this License.

9. The Free Software Foundation may publish revised and/or new versions of the General Public License from time to time. Such new versions will be similar in spirit to the present version, but may differ in detail to address new problems or concerns.

Each version is given a distinguishing version number. If the Program specifies a version number of this License which applies to it and "any later version", you have the option of following the terms and conditions either of that version or of any later version published by the Free Software Foundation. If the Program does not specify a version number of this License, you may choose any version ever published by the Free Software Foundation.

10. If you wish to incorporate parts of the Program into other free programs whose distribution conditions are different, write to the author to ask for permission. For software which is copyrighted by the Free Software Foundation, write to the Free Software Foundation; we sometimes make exceptions for this. Our decision will be guided by the two goals of preserving the free status of all derivatives of our free software and of promoting the sharing and reuse of software generally.

#### NO WARRANTY

11. BECAUSE THE PROGRAM IS LICENSED FREE OF CHARGE, THERE IS NO WARRANTY FOR THE PROGRAM, TO THE EXTENT PERMITTED BY APPLICABLE LAW. EXCEPT WHEN OTHERWISE STATED IN WRITING THE COPYRIGHT HOLDERS AND/OR OTHER PARTIES PROVIDE THE PROGRAM "AS IS" WITHOUT WARRANTY OF ANY KIND, EITHER EXPRESSED OR IMPLIED, INCLUDING, BUT NOT LIMITED TO, THE IMPLIED WARRANTIES OF MERCHANTABILITY AND FITNESS FOR A PARTICULAR PURPOSE. THE ENTIRE RISK AS TO THE QUALITY AND PERFORMANCE OF THE PROGRAM IS WITH YOU. SHOULD THE PROGRAM PROVE DEFECTIVE, YOU ASSUME THE COST OF ALL NECESSARY SERVICING, REPAIR OR CORRECTION.

12. IN NO EVENT UNLESS REQUIRED BY APPLICABLE LAW OR AGREED TO IN WRITING WILL ANY COPYRIGHT HOLDER, OR ANY OTHER PARTY WHO MAY MODIFY AND/OR REDISTRIBUTE THE PROGRAM AS PERMITTED ABOVE, BE LIABLE TO YOU FOR DAMAGES, INCLUDING ANY GENERAL, SPECIAL, INCIDENTAL OR CONSEQUENTIAL DAMAGES ARISING OUT OF THE USE OR INABILITY TO USE THE PROGRAM (INCLUDING BUT NOT LIMITED TO LOSS OF DATA OR DATA BEING RENDERED INACCURATE OR LOSSES SUSTAINED BY YOU OR THIRD PARTIES OR A FAILURE OF THE PROGRAM TO OPERATE WITH ANY OTHER PROGRAMS), EVEN IF SUCH HOLDER OR OTHER PARTY HAS BEEN ADVISED OF THE POSSIBILITY OF SUCH DAMAGES.

-----  
GNU LESSER GENERAL PUBLIC LICENSE

Version 2.1, February 1999

Copyright (C) 1991, 1999 Free Software Foundation, Inc.

51 Franklin Street, Fifth Floor, Boston, MA 02110-1301 USA

Everyone is permitted to copy and distribute verbatim copies  
of this license document, but changing it is not allowed.

[This is the first released version of the Lesser GPL. It also counts  
as the successor of the GNU Library Public License, version 2, hence  
the version number 2.1.]

#### Preamble

The licenses for most software are designed to take away your freedom to share and change it. By contrast, the GNU General Public Licenses are intended to guarantee your freedom to share and change free software--to make sure the software is free for all its users.

This license, the Lesser General Public License, applies to some specially designated software packages--typically libraries--of the Free Software Foundation and other authors who decide to use it. You can use it too, but we suggest you first think carefully about whether this license or the ordinary General Public License is the better strategy to use in any particular case, based on the explanations below.

When we speak of free software, we are referring to freedom of use, not price. Our General Public Licenses are designed to make sure that you have the freedom to distribute copies of free software (and charge for this service if you wish); that you receive source code or can get it if you want it; that you can change the software and use pieces of it in new free programs; and that you are informed that you can do these things.

To protect your rights, we need to make restrictions that forbid distributors to deny you these rights or to ask you to surrender these rights. These restrictions translate to certain responsibilities for you if you distribute copies of the library or if you modify it.

For example, if you distribute copies of the library, whether gratis or for a fee, you must give the recipients all the rights that we gave you. You must make sure that they, too, receive or can get the source code. If you link other code with the library, you must provide complete object files to the recipients, so that they can relink them with the library after making changes to the library and recompiling it. And you must show them these terms so they know their rights.

We protect your rights with a two-step method: (1) we copyright the library, and (2) we offer you this license, which gives you legal permission to copy, distribute and/or modify the library.

To protect each distributor, we want to make it very clear that there is no warranty for the free library. Also, if the library is modified by someone else and passed on, the recipients should know that what they have is not the original version, so that the original author's reputation will not be affected by problems that might be introduced by others.

Finally, software patents pose a constant threat to the existence of any free program. We wish to make sure that a company cannot effectively restrict the users of a free program by obtaining a restrictive license from a patent holder. Therefore, we insist that any patent license obtained for a version of the library must be consistent with the full freedom of use specified in this license.

Most GNU software, including some libraries, is covered by the ordinary GNU General Public License. This license, the GNU Lesser General Public License, applies to certain designated libraries, and is quite different from the ordinary General Public License. We use this license for certain libraries in order to permit linking those libraries into non-free programs.

When a program is linked with a library, whether statically or using a shared library, the combination of the two is legally speaking a combined work, a derivative of the original library. The ordinary General Public License therefore permits such linking only if the entire combination fits its criteria of freedom. The Lesser General Public License permits more lax criteria for linking other code with the library.

We call this license the "Lesser" General Public License because it does Less to protect the user's freedom than the ordinary General Public License. It also provides other free software developers Less of an advantage over competing non-free programs. These disadvantages are the reason we use the ordinary General Public License for many libraries. However, the Lesser license provides advantages in certain special circumstances.

For example, on rare occasions, there may be a special need to encourage the widest possible use of a certain library, so that it becomes a de-facto standard. To achieve this, non-free programs must be allowed to use the library. A more frequent case is that a free library does the same job as widely used non-free libraries. In this case, there is little to gain by limiting the free library to free software only, so we use the Lesser General Public License.

In other cases, permission to use a particular library in non-free programs enables a greater number of people to use a large body of free software. For example, permission to use the GNU C Library in non-free programs enables many more people to use the whole GNU operating system, as well as its variant, the GNU/Linux operating system.

Although the Lesser General Public License is Less protective of the users' freedom, it does ensure that the user of a program that is linked with the Library has the freedom and the wherewithal to run that program using a modified version of the Library.

The precise terms and conditions for copying, distribution and modification follow. Pay close attention to the difference between a "work based on the library" and a "work that uses the library". The former contains code derived from the library, whereas the latter must be combined with the library in order to run.

## TERMS AND CONDITIONS FOR COPYING, DISTRIBUTION AND MODIFICATION

0. This License Agreement applies to any software library or other program which contains a notice placed by the copyright holder or other authorized party saying it may be distributed under the terms of this Lesser General Public License (also called "this License"). Each licensee is addressed as "you".

A "library" means a collection of software functions and/or data prepared so as to be conveniently linked with application programs (which use some of those functions and data) to form executables.

The "Library", below, refers to any such software library or work which has been distributed under these terms. A "work based on the Library" means either the Library or any derivative work under copyright law: that is to say, a work containing the Library or a portion of it, either verbatim or with modifications and/or translated straightforwardly into another language. (Hereinafter, translation is included without limitation in the term "modification".)



"Source code" for a work means the preferred form of the work for making modifications to it. For a library, complete source code means all the source code for all modules it contains, plus any associated interface definition files, plus the scripts used to control compilation and installation of the library.

Activities other than copying, distribution and modification are not covered by this License; they are outside its scope. The act of running a program using the Library is not restricted, and output from such a program is covered only if its contents constitute a work based on the Library (independent of the use of the Library in a tool for writing it). Whether that is true depends on what the Library does and what the program that uses the Library does.

1. You may copy and distribute verbatim copies of the Library's complete source code as you receive it, in any medium, provided that you conspicuously and appropriately publish on each copy an appropriate copyright notice and disclaimer of warranty; keep intact all the notices that refer to this License and to the absence of any warranty; and distribute a copy of this License along with the Library.

You may charge a fee for the physical act of transferring a copy, and you may at your option offer warranty protection in exchange for a fee.

2. You may modify your copy or copies of the Library or any portion of it, thus forming a work based on the Library, and copy and distribute such modifications or work under the terms of Section 1 above, provided that you also meet all of these conditions:

- a) The modified work must itself be a software library.
- b) You must cause the files modified to carry prominent notices stating that you changed the files and the date of any change.
- c) You must cause the whole of the work to be licensed at no charge to all third parties under the terms of this License.
- d) If a facility in the modified Library refers to a function or a table of data to be supplied by an application program that uses the facility, other than as an argument passed when the facility is invoked, then you must make a good faith effort to ensure that, in the event an application does not supply such function or table, the facility still operates, and performs whatever part of its purpose remains meaningful.

(For example, a function in a library to compute square roots has a purpose that is entirely well-defined independent of the application. Therefore, Subsection 2d requires that any application-supplied function or table used by this function must be optional: if the application does not supply it, the square root function must still compute square roots.)

These requirements apply to the modified work as a whole. If identifiable sections of that work are not derived from the Library, and can be reasonably considered independent and separate works in themselves, then this License, and its terms, do not apply to those sections when you distribute them as separate works. But when you distribute the same sections as part of a whole which is a work based on the Library, the distribution of the whole must be on the terms of this License, whose permissions for other licensees extend to the entire whole, and thus to each and every part regardless of who wrote it.

Thus, it is not the intent of this section to claim rights or contest your rights to work written entirely by you; rather, the intent is to exercise the right to control the distribution of derivative or collective works based on the Library.

In addition, mere aggregation of another work not based on the Library with the Library (or with a work based on the Library) on a volume of a storage or distribution medium does not bring the other work under the scope of this License.

3. You may opt to apply the terms of the ordinary GNU General Public License instead of this License to a given copy of the Library. To do this, you must alter all the notices that refer to this License, so that they refer to the ordinary GNU General Public License, version 2, instead of to this License. (If a newer version than version 2 of the ordinary GNU General Public License has appeared, then you can specify that version instead if you wish.) Do not make any other change in these notices.

Once this change is made in a given copy, it is irreversible for that copy, so the ordinary GNU General Public License applies to all subsequent copies and derivative works made from that copy.

This option is useful when you wish to copy part of the code of the Library into a program that is not a library.

4. You may copy and distribute the Library (or a portion or derivative of it, under Section 2) in object code or executable form under the terms of Sections 1 and 2 above provided that you accompany it with the complete corresponding machine-readable source code, which must be distributed under the terms of Sections 1 and 2 above on a medium customarily used for software interchange.

If distribution of object code is made by offering access to copy from a designated place, then offering equivalent access to copy the source code from the same place satisfies the requirement to distribute

the source code, even though third parties are not compelled to copy the source along with the object code.

5. A program that contains no derivative of any portion of the Library, but is designed to work with the Library by being compiled or linked with it, is called a "work that uses the Library". Such a work, in isolation, is not a derivative work of the Library, and therefore falls outside the scope of this License.

However, linking a "work that uses the Library" with the Library creates an executable that is a derivative of the Library (because it contains portions of the Library), rather than a "work that uses the library". The executable is therefore covered by this License. Section 6 states terms for distribution of such executables.

When a "work that uses the Library" uses material from a header file that is part of the Library, the object code for the work may be a derivative work of the Library even though the source code is not. Whether this is true is especially significant if the work can be linked without the Library, or if the work is itself a library. The threshold for this to be true is not precisely defined by law.

If such an object file uses only numerical parameters, data structure layouts and accessors, and small macros and small inline functions (ten lines or less in length), then the use of the object file is unrestricted, regardless of whether it is legally a derivative work. (Executables containing this object code plus portions of the Library will still fall under Section 6.)

Otherwise, if the work is a derivative of the Library, you may distribute the object code for the work under the terms of Section 6. Any executables containing that work also fall under Section 6, whether or not they are linked directly with the Library itself.

6. As an exception to the Sections above, you may also combine or link a "work that uses the Library" with the Library to produce a work containing portions of the Library, and distribute that work under terms of your choice, provided that the terms permit modification of the work for the customer's own use and reverse engineering for debugging such modifications.

You must give prominent notice with each copy of the work that the Library is used in it and that the Library and its use are covered by this License. You must supply a copy of this License. If the work during execution displays copyright notices, you must include the copyright notice for the Library among them, as well as a reference directing the user to the copy of this License. Also, you must do one of these things:

a) Accompany the work with the complete corresponding machine-readable source code for the Library including whatever changes were used in the work (which must be distributed under Sections 1 and 2 above); and, if the work is an executable linked with the Library, with the complete machine-readable "work that uses the Library", as object code and/or source code, so that the user can modify the Library and then relink to produce a modified executable containing the modified Library. (It is understood that the user who changes the contents of definitions files in the Library will not necessarily be able to recompile the application to use the modified definitions.)

b) Use a suitable shared library mechanism for linking with the Library. A suitable mechanism is one that (1) uses at run time a copy of the library already present on the user's computer system, rather than copying library functions into the executable, and (2) will operate properly with a modified version of the library, if the user installs one, as long as the modified version is interface-compatible with the version that the work was made with.

c) Accompany the work with a written offer, valid for at least three years, to give the same user the materials specified in Subsection 6a, above, for a charge no more than the cost of performing this distribution.

d) If distribution of the work is made by offering access to copy from a designated place, offer equivalent access to copy the above specified materials from the same place.

e) Verify that the user has already received a copy of these materials or that you have already sent this user a copy.

For an executable, the required form of the "work that uses the Library" must include any data and utility programs needed for reproducing the executable from it. However, as a special exception, the materials to be distributed need not include anything that is normally distributed (in either source or binary form) with the major components (compiler, kernel, and so on) of the operating system on which the executable runs, unless that component itself accompanies the executable.

It may happen that this requirement contradicts the license restrictions of other proprietary libraries that do not normally accompany the operating system. Such a contradiction means you cannot use both them and the Library together in an executable that you distribute.

7. You may place library facilities that are a work based on the Library side-by-side in a single library together with other library facilities not covered by this License, and distribute such a combined library, provided that the separate distribution of the work based on the Library and of the other library facilities is otherwise permitted, and provided that you do these two things:

a) Accompany the combined library with a copy of the same work based on the Library, uncombined with any other library facilities. This must be distributed under the terms of the Sections above.

b) Give prominent notice with the combined library of the fact that part of it is a work based on the Library, and explaining where to find the accompanying uncombined form of the same work.

8. You may not copy, modify, sublicense, link with, or distribute the Library except as expressly provided under this License. Any attempt otherwise to copy, modify, sublicense, link with, or distribute the Library is void, and will automatically terminate your rights under this License. However, parties who have received copies, or rights, from you under this License will not have their licenses terminated so long as such parties remain in full compliance.

9. You are not required to accept this License, since you have not signed it. However, nothing else grants you permission to modify or distribute the Library or its derivative works. These actions are prohibited by law if you do not accept this License. Therefore, by modifying or distributing the Library (or any work based on the Library), you indicate your acceptance of this License to do so, and all its terms and conditions for copying, distributing or modifying the Library or works based on it.

10. Each time you redistribute the Library (or any work based on the Library), the recipient automatically receives a license from the original licensor to copy, distribute, link with or modify the Library subject to these terms and conditions. You may not impose any further restrictions on the recipients' exercise of the rights granted herein. You are not responsible for enforcing compliance by third parties with this License.

11. If, as a consequence of a court judgment or allegation of patent infringement or for any other reason (not limited to patent issues), conditions are imposed on you (whether by court order, agreement or otherwise) that contradict the conditions of this License, they do not excuse you from the conditions of this License. If you cannot distribute so as to satisfy simultaneously your obligations under this License and any other pertinent obligations, then as a consequence you may not distribute the Library at all. For example, if a patent license would not permit royalty-free redistribution of the Library by all those who receive copies directly or indirectly through you, then the only way you could satisfy both it and this License would be to refrain entirely from distribution of the Library.

If any portion of this section is held invalid or unenforceable under any particular circumstance, the balance of the section is intended to apply, and the section as a whole is intended to apply in other circumstances.

It is not the purpose of this section to induce you to infringe any patents or other property right claims or to contest validity of any such claims; this section has the sole purpose of protecting the integrity of the free software distribution system which is implemented by public license practices. Many people have made generous contributions to the wide range of software distributed through that system in

reliance on consistent application of that system; it is up to the author/donor to decide if he or she is willing to distribute software through any other system and a licensee cannot impose that choice.

This section is intended to make thoroughly clear what is believed to be a consequence of the rest of this License.

12. If the distribution and/or use of the Library is restricted in certain countries either by patents or by copyrighted interfaces, the original copyright holder who places the Library under this License may add an explicit geographical distribution limitation excluding those countries, so that distribution is permitted only in or among countries not thus excluded. In such case, this License incorporates the limitation as if written in the body of this License.

13. The Free Software Foundation may publish revised and/or new versions of the Lesser General Public License from time to time. Such new versions will be similar in spirit to the present version, but may differ in detail to address new problems or concerns.

Each version is given a distinguishing version number. If the Library specifies a version number of this License which applies to it and "any later version", you have the option of following the terms and conditions either of that version or of any later version published by the Free Software Foundation. If the Library does not specify a license version number, you may choose any version ever published by the Free Software Foundation.

14. If you wish to incorporate parts of the Library into other free programs whose distribution conditions are incompatible with these, write to the author to ask for permission. For software which is copyrighted by the Free Software Foundation, write to the Free Software Foundation; we sometimes make exceptions for this. Our decision will be guided by the two goals of preserving the free status of all derivatives of our free software and of promoting the sharing and reuse of software generally.

#### NO WARRANTY

15. BECAUSE THE LIBRARY IS LICENSED FREE OF CHARGE, THERE IS NO WARRANTY FOR THE LIBRARY, TO THE EXTENT PERMITTED BY APPLICABLE LAW. EXCEPT WHEN OTHERWISE STATED IN WRITING THE COPYRIGHT HOLDERS AND/OR OTHER PARTIES PROVIDE THE LIBRARY "AS IS" WITHOUT WARRANTY OF ANY KIND, EITHER EXPRESSED OR IMPLIED, INCLUDING, BUT NOT LIMITED TO, THE IMPLIED WARRANTIES OF MERCHANTABILITY AND FITNESS FOR A PARTICULAR PURPOSE. THE ENTIRE RISK AS TO THE QUALITY AND PERFORMANCE OF THE LIBRARY IS WITH YOU. SHOULD THE LIBRARY PROVE DEFECTIVE, YOU ASSUME THE COST OF ALL NECESSARY SERVICING, REPAIR OR CORRECTION.

16. IN NO EVENT UNLESS REQUIRED BY APPLICABLE LAW OR AGREED TO IN WRITING WILL ANY COPYRIGHT HOLDER, OR ANY OTHER PARTY WHO MAY MODIFY AND/OR REDISTRIBUTE THE LIBRARY AS PERMITTED ABOVE, BE LIABLE TO YOU FOR DAMAGES, INCLUDING ANY GENERAL, SPECIAL, INCIDENTAL OR CONSEQUENTIAL DAMAGES ARISING OUT OF THE USE OR INABILITY TO USE THE LIBRARY (INCLUDING BUT NOT LIMITED TO LOSS OF DATA OR DATA BEING RENDERED INACCURATE OR LOSSES SUSTAINED BY YOU OR THIRD PARTIES OR A FAILURE OF THE LIBRARY TO OPERATE WITH ANY OTHER SOFTWARE), EVEN IF SUCH HOLDER OR OTHER PARTY HAS BEEN ADVISED OF THE POSSIBILITY OF SUCH DAMAGES.

-----  
Three-clause BSD license

Redistribution and use in source and binary forms, with or without modification, are permitted provided that the following conditions are met:

- Redistributions of source code must retain the above copyright notice, this list of conditions and the following disclaimer.
- Redistributions in binary form must reproduce the above copyright notice, this list of conditions and the following disclaimer in the documentation and/or other materials provided with the distribution.
- Neither the name of Internet Society, IETF or IETF Trust, nor the names of specific contributors, may be used to endorse or promote products derived from this software without specific prior written permission.

THIS SOFTWARE IS PROVIDED BY THE COPYRIGHT HOLDERS AND CONTRIBUTORS  
"AS IS" AND ANY EXPRESS OR IMPLIED WARRANTIES, INCLUDING, BUT NOT

LIMITED TO, THE IMPLIED WARRANTIES OF MERCHANTABILITY AND FITNESS FOR A PARTICULAR PURPOSE ARE DISCLAIMED. IN NO EVENT SHALL THE COPYRIGHT OWNER OR CONTRIBUTORS BE LIABLE FOR ANY DIRECT, INDIRECT, INCIDENTAL, SPECIAL, EXEMPLARY, OR CONSEQUENTIAL DAMAGES (INCLUDING, BUT NOT LIMITED TO, PROCUREMENT OF SUBSTITUTE GOODS OR SERVICES; LOSS OF USE, DATA, OR PROFITS; OR BUSINESS INTERRUPTION) HOWEVER CAUSED AND ON ANY THEORY OF LIABILITY, WHETHER IN CONTRACT, STRICT LIABILITY, OR TORT (INCLUDING NEGLIGENCE OR OTHERWISE) ARISING IN ANY WAY OUT OF THE USE OF THIS SOFTWARE, EVEN IF ADVISED OF THE POSSIBILITY OF SUCH DAMAGE.

-----





2016 © Gibson Innovations Limited. All rights reserved. This product has been manufactured by, and is sold under the responsibility of Gibson Innovations Ltd., and Gibson Innovations Ltd. is the warrantor in relation to this product. Philips and the Philips Shield Emblem are registered trademarks of Koninklijke Philips N.V. and are used under license.

AW3000\_10\_UM\_V3.0

