

AS360



## Short User Manual

**PHILIPS**



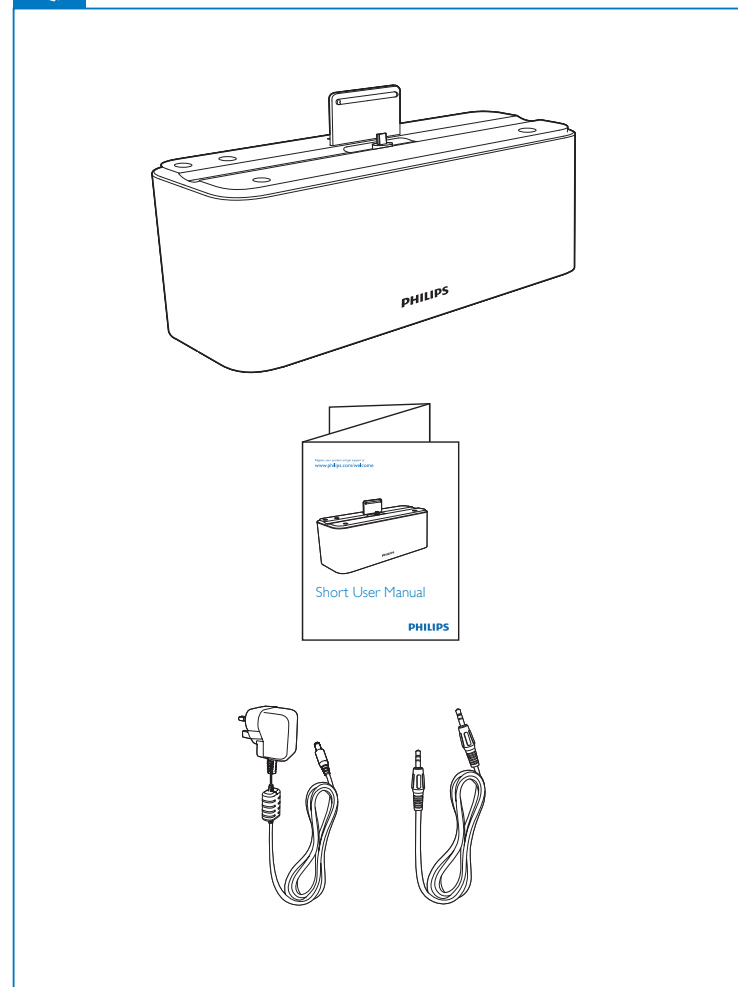
### Safety

- Read these instructions.
- Keep these instructions.
- Heed all warnings.
- Follow all instructions.
- Do not use this apparatus near water.
- Clean only with dry cloth.
- Install in accordance with the manufacturer's instructions.
- Do not install near any heat sources such as radiators, heat registers, stoves, or other apparatus (including amplifiers) that produce heat.
- Protect the power cord from being walked on or pinched, particularly at plugs, convenience receptacles, and the point where they exit from the apparatus.
- Only use attachments/accessories specified by the manufacturer.
- Unplug this apparatus during lightning storms or when unused for long periods of time.
- Refer all servicing to qualified service personnel. Servicing is required when the apparatus has been damaged in any way, such as power-supply cord or plug is damaged, liquid has been spilled or objects have fallen into the apparatus, the apparatus has been exposed to rain or moisture, does not operate normally, or has been dropped.
- Battery usage CAUTION – To prevent battery leakage which may result in bodily injury, property damage, or damage to the unit:
- Install all batteries correctly, + and - as marked on the unit.
  - Do not mix batteries (old and new or carbon and alkaline, etc.).
  - Remove batteries when the unit is not used for a long time.
  - Batteries (battery pack or batteries installed) shall not be exposed to excessive heat such as sunshine, fire or the like.
- Apparatus shall not be exposed to dripping or splashing.
- Do not place any sources of danger on the apparatus (e.g. liquid filled objects, lighted candles).
- Where the plug of the Direct Plugin Adapter is used as the disconnect device, the disconnect device shall remain readily operable.
- Use only power supplies listed in the user manual.



#### Warning

- Never remove the casing of this apparatus.
- Never lubricate any part of this apparatus.
- Never place this apparatus on other electrical equipment.



### Notice

Any changes or modifications made to this device that are not expressly approved by Philips Consumer Lifestyle may void the user's authority to operate the equipment.

**CE 0890**

This product complies with the requirement of the 1999/5/EC directive. A copy of EC declaration of Conformity is available in the Portable Document Format (PDF) version of the user manual at [www.philips.com/support](http://www.philips.com/support).



Your product is designed and manufactured with high quality materials and components, which can be recycled and reused.



When this crossed-out wheeled bin symbol is attached to a product it means that the product is covered by the European Directive 2002/96/EC. Please inform yourself about the local separate collection system for electrical and electronic products. Please act according to your local rules and do not dispose of your old products with your normal household waste. Correct disposal of your old product helps to prevent potential negative consequences for the environment and human health.



Your product contains batteries covered by the European Directive 2006/66/EC, which cannot be disposed with normal household waste. Please inform yourself about the local rules on separate collection of batteries because correct disposal helps to prevent negative consequences for the environmental and human health.

#### Environmental information

All unnecessary packaging has been omitted. We have tried to make the packaging easy to separate into three materials: cardboard (box), polystyrene foam (buffer) and polyethylene (bags, protective foam sheet.)

Your system consists of materials which can be recycled and reused if disassembled by a specialized company. Please observe the local regulations regarding the disposal of packaging materials, exhausted batteries and old equipment.

### Bluetooth

The Bluetooth® word mark and logos are registered trademarks owned by Bluetooth SIG, Inc. and any use of such marks by Philips is under license.



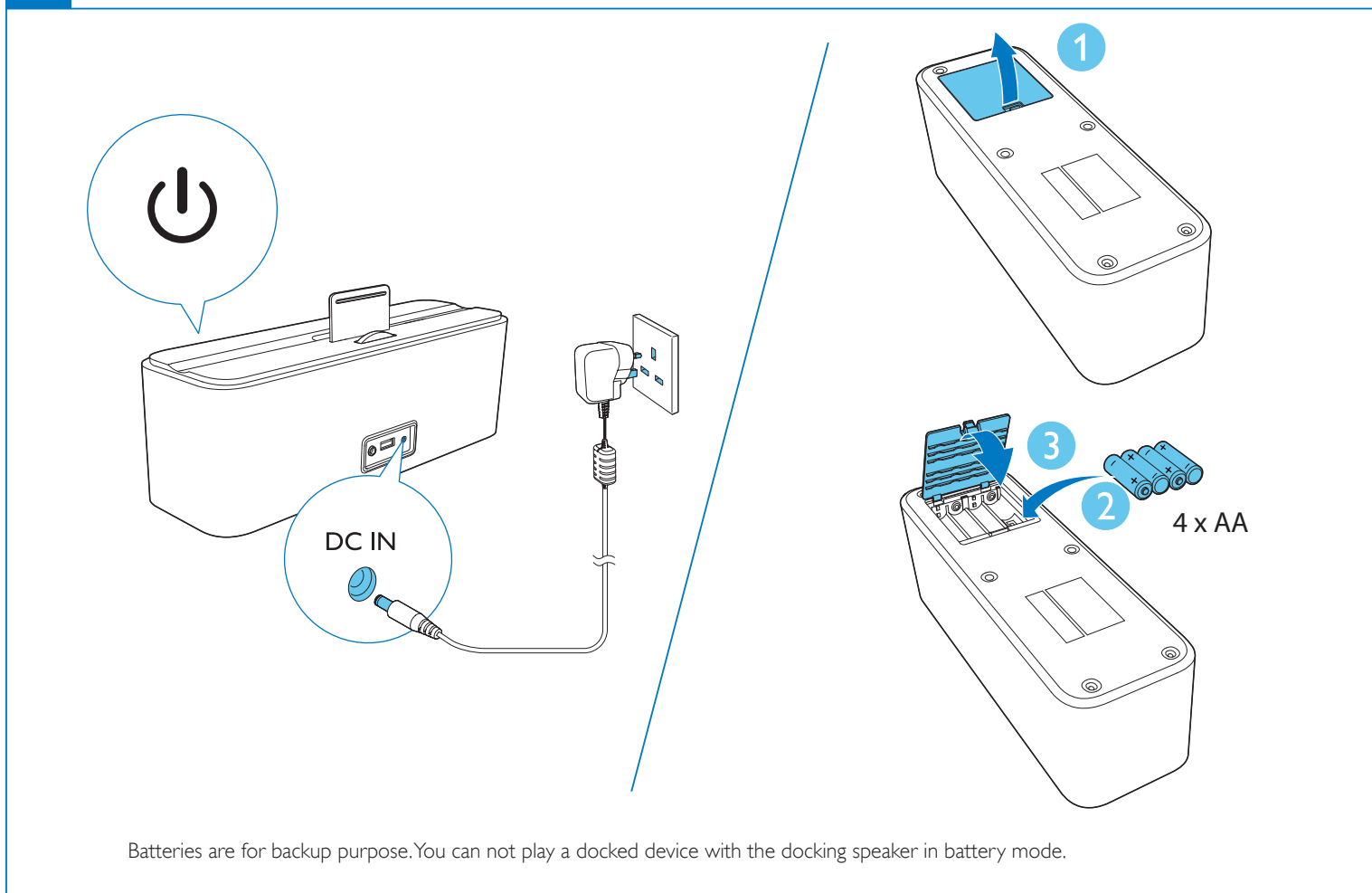
#### Note

- The type plate is located on the bottom of the apparatus.



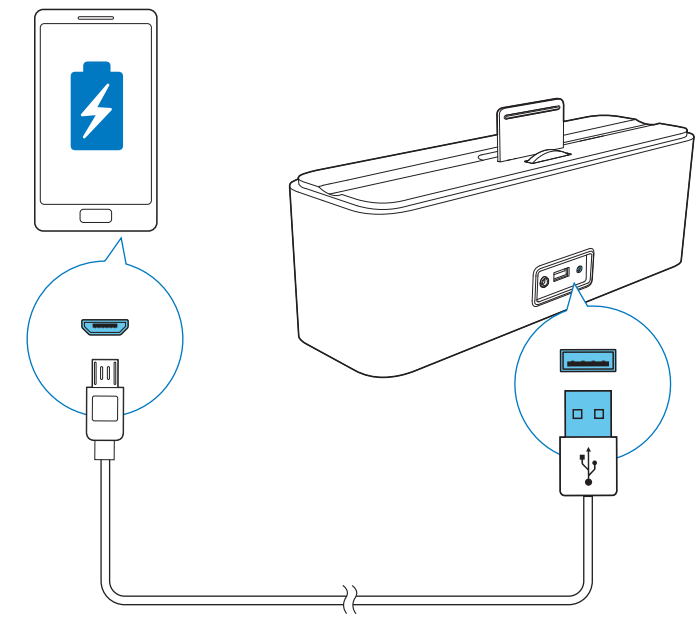
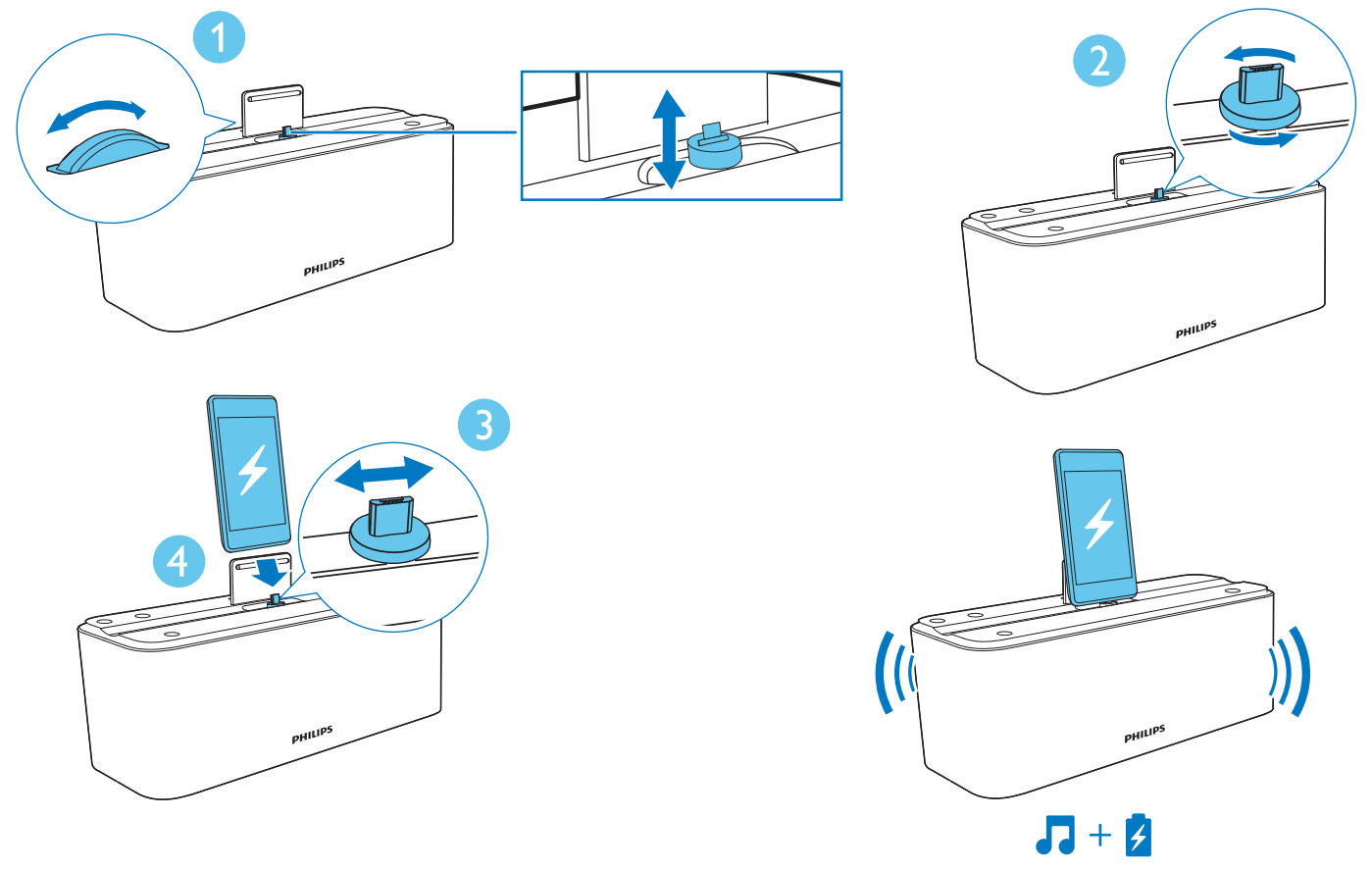
### Specifications

AC Power	OH-1028A0903000U-UK (Philips) Input: 100-240V~, 50/60Hz, 800mA MAX; Output: 9V $\equiv$ 3A
Battery	4 x AA
Operation Power Consumption	<18W
Eco Standby Power Consumption	< 0.5 W
Dimensions - Main Unit (W x H x D)	260 X 90 X 95 mm
Weight - Main Unit	1.18 kg
Charging:	
- through micro USB connector	1 A
- through CHARGING socket	1 A
Speaker impedance	4 ohm

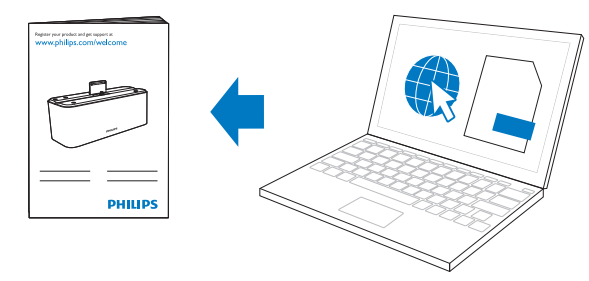
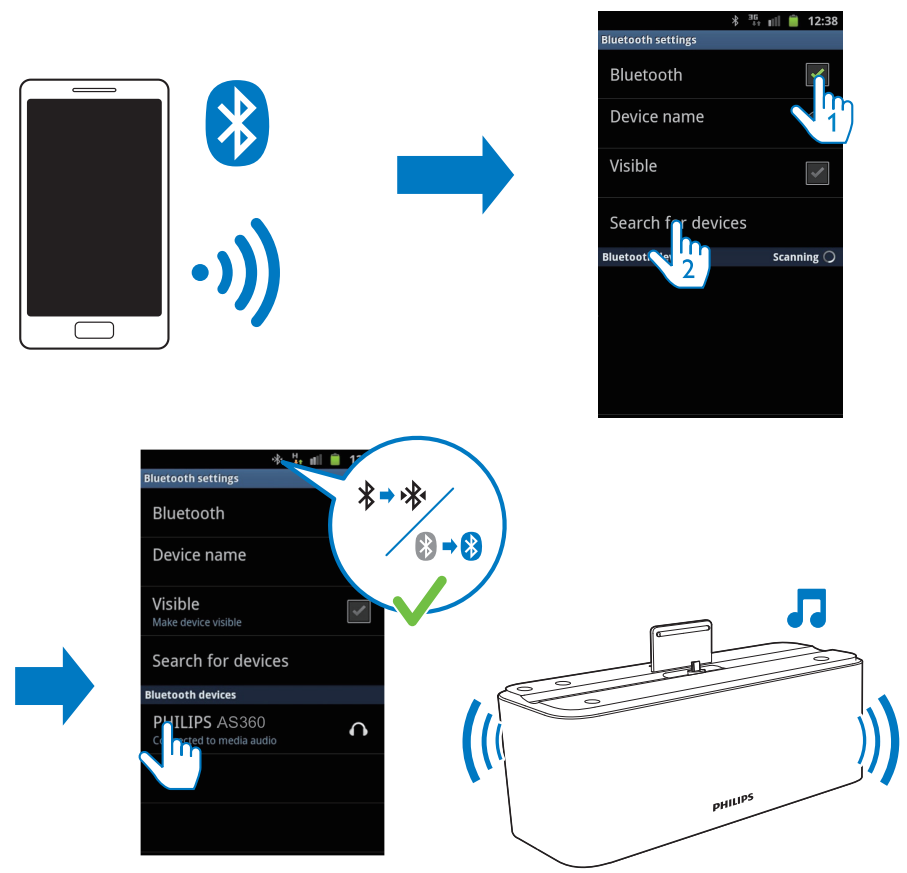
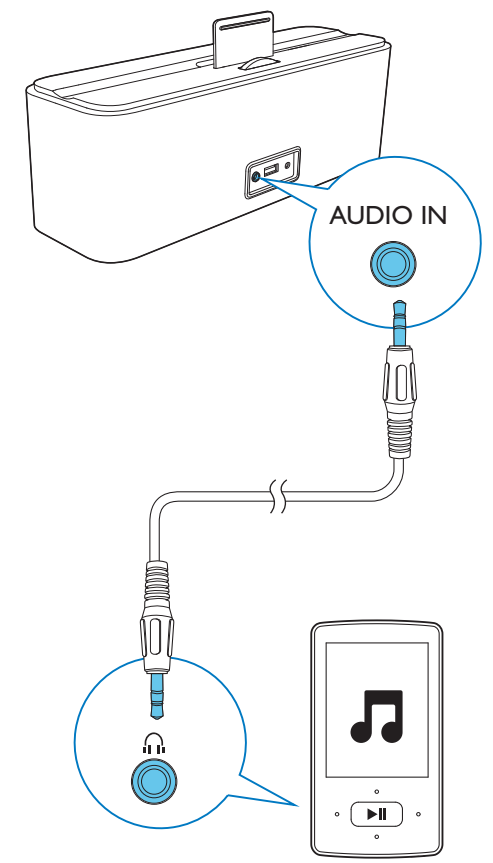


Batteries are for backup purpose. You can not play a docked device with the docking speaker in battery mode.





- Compatible with Android™
- With Android operation system (version 4.2 and above);
  - With a micro USB connector;
  - Support Android Open Accessory (AOA).



[www.philips.com/support](http://www.philips.com/support)

