

Always there to help you

Register your product and get support at
www.philips.com/support



AJT4400B



User manual

PHILIPS

Contents

1	Safety	2
	Important safety instructions	2

2	Your clock radio	4
	Introduction	4
	What's in the box	4
	Overview of the clock radio	5

3	Get started	6
	Install battery	6
	Connect power	6
	Set clock	6

4	Listen to FM radio	7
	Tune to FM radio stations	7
	Store FM radio stations automatically	7
	Store FM radio stations manually	7
	Select a preset radio station	7
	Adjust volume	7

5	Use Bluetooth devices	8
	Connect a device	8
	Play audio from Bluetooth-enabled device	8
	Bluetooth icon status	9
	Clear the pairing information	9
	Control your phone call	9

6	Set alarm timer	10
	Set alarm	10
	Activate/deactivate alarm timer	10
	Snooze the alarm	10

7	Other features	11
	Set sleep timer	11
	Charge your device	11
	Adjust display brightness	11

8	Product information	12
	Specifications	12

9	Troubleshooting	13
----------	------------------------	-----------

10	Notice	14
	Compliance	14
	Care of the environment	14

1 Safety

Know these safety symbols



This 'bolt of lightning' indicates uninsulated material within your unit may cause an electric shock. For the safety of everyone in your household, please do not remove product covering.

The 'exclamation mark' calls attention to features for which you should read the enclosed literature closely to prevent operating and maintenance problems.

WARNING: To reduce the risk of fire or electric shock, this apparatus should not be exposed to rain or moisture and objects filled with liquids, such as vases, should not be placed on this apparatus.

CAUTION: To prevent electric shock, fully insert the plug. (For regions with polarized plugs: To prevent electric shock, match wide blade to wide slot.)

Important safety instructions

- ① Read these instructions.
- ② Keep these instructions.
- ③ Heed all warnings.
- ④ Follow all instructions.
- ⑤ Do not use this apparatus near water.
- ⑥ Clean only with dry cloth.
- ⑦ Do not block any ventilation openings. Install in accordance with the manufacturer's instructions.
- ⑧ Do not install near any heat sources such as radiators, heat registers, stoves, or other apparatus (including amplifiers) that produce heat.
- ⑨ Protect the power cord from being walked on or pinched, particularly at plugs, convenience receptacles, and the point where they exit from the apparatus.
- ⑩ Only use attachments/accessories specified by the manufacturer.
- ⑪ Unplug this apparatus during lightning storms or when unused for long periods of time.
- ⑫ Refer all servicing to qualified service personnel. Servicing is required when the apparatus has been damaged in any way, such as power-supply cord or plug is damaged, liquid has been spilled or objects have fallen into the apparatus, the apparatus has been exposed to rain or moisture, does not operate normally, or has been dropped.
- ⑬ Battery usage **CAUTION** – To prevent battery leakage which may result in bodily injury, property damage, or damage to the unit:
 - Install all batteries correctly, + and - as marked on the unit.
 - Remove batteries when the unit is not used for a long time.
- ⑭ Apparatus shall not be exposed to dripping or splashing.
- ⑮ Do not place any sources of danger on the apparatus (e.g. liquid filled objects, lighted candles).
- ⑯ This product may contain lead and mercury. Disposal of these materials may be regulated due to environmental considerations. For disposal or recycling information, please contact your local authorities or the Electronic Industries Alliance: www.eiae.org.
- ⑰ Where the MAINS plug or an appliance coupler is used as the disconnect device, the disconnect device shall remain readily operable.



Note

- The type plate is located on the bottom of the apparatus.

2 Your clock radio

Congratulations on your purchase, and welcome to Philips! To fully benefit from the support that Philips offers, register your product at www.philips.com/welcome.

Introduction

With this clock radio, you can:

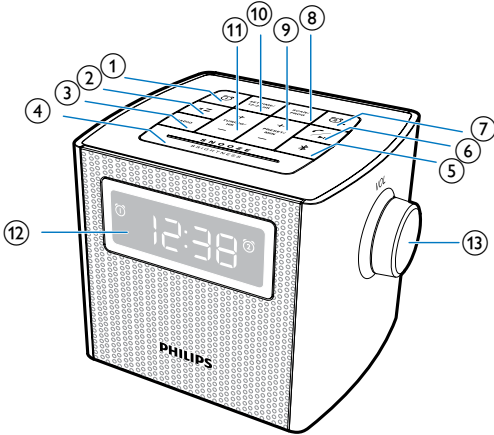
- listen to FM radio;
- play audio from Bluetooth-enabled devices;
- make phone calls;
- set two alarms, and
- wake up to buzzer or radio.

What's in the box

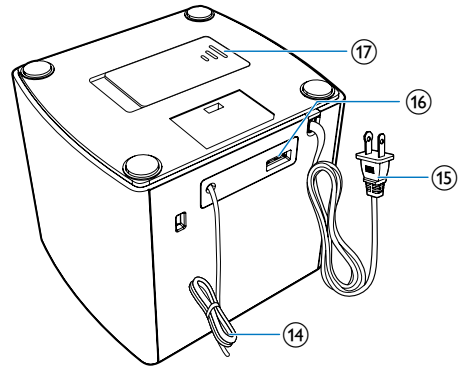
Check and identify the contents of your package:

- Clock radio
- Short User Manual

Overview of the clock radio



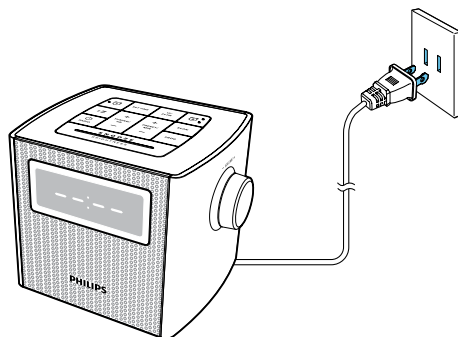
- ① **⌚**
 - Set Alarm 1.
 - View alarm settings.
 - Activate or deactivate alarm timer.
- ② **zZ**
 - Set sleep timer.
- ③ **RADIO**
 - Turn the radio on or off.
- ④ **SNOOZE/BRIGHTNESS**
 - Snooze the alarm.
 - Adjust display brightness.
- ⑤ *****
 - Select Bluetooth source.
- ⑥ **📶**
 - Play or pause the Bluetooth music playback.
 - Answer an incoming call.
 - Reject an incoming call.
- ⑦ **⌚**
 - Set Alarm 2.
 - View alarm settings.
 - Activate or deactivate alarm timer.
- ⑧ **SCAN/PROG**
 - Scan and store FM radio stations automatically.



- Program the sequence of the radio stations.
- ⑨ **+ PRESET/ MIN -**
 - Adjust minute.
 - Select preset radio stations.
- ⑩ **SET TIME/12/24 HR**
 - Press to enter timer setting mode.
 - Press and hold to set 12 or 24 time format.
- ⑪ **+ TUNING/ HR -**
 - Adjust hour.
 - Tune to FM radio stations.
- ⑫ **Display panel**
- ⑬ **VOL knob**
 - Adjust volume.
- ⑭ **FM ANT**
 - Improve FM reception.
- ⑮ **Power plug**
 - Connect AC power.
- ⑯ **USB socket**
 - Charge your mobile devices.
- ⑰ **Battery compartment**

3 Get started

Always follow the instructions in this chapter in sequence.



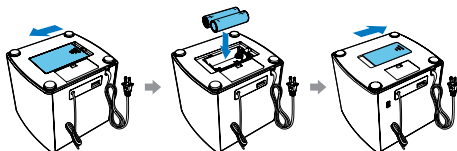
Install battery

! Caution

- Risk of explosion! Keep batteries away from heat, sunshine or fire. Never discard batteries in fire.
- Danger of explosion if batteries are incorrectly replaced. Replace only with the same or equivalent type.
- The batteries contain chemical substances, so they should be disposed of properly.

You can only use AC power as power supply. The battery can only back up clock and alarm settings.

- Install two AA batteries (not supplied) as illustrated below:



Connect power

! Caution

- Risk of product damage! Make sure that the power voltage corresponds to the voltage printed on the back or underside of the clock radio.
- Risk of electric shock! When you unplug the AC plug, always pull the plug from the socket. Never pull the cord.

Set clock


- 1 Press **SET TIME/ 12/24 HR** to activate clock setting mode.
↳ The hour and minute digits blink.
- 2 Press **+ TUNING/ HR -** to set hour.
- 3 Press **+ PRESET/ MIN -** to set minute.
- 4 Press **SET TIME/12/24 HR** to confirm.
- 5 Press and hold **SET TIME /12/24 HR** to select 12/24 hour format.

4 Listen to FM radio

Tune to FM radio stations

Tip

- Position the antenna as far as possible from any electrical appliances.
- For better reception, fully extend and adjust the position of the antenna.

- 1 Press **RADIO** to turn on FM radio.
↳  is displayed.
- 2 Press and hold **+ TUNING/ HR -** for two seconds.
↳ The clock radio tunes to a station with strong reception automatically.
- 3 Repeat step 2 to tune to more radio stations.

To tune to a station manually:

- In tuner mode, press **+ TUNING/ HR -** repeatedly to select a frequency.

Tip

- To turn the radio off, press **RADIO** again.

Store FM radio stations automatically

- In FM tuner mode, press and hold **SCAN/PROG.**
↳ The clock radio stores all the available FM radio stations, and then broadcasts the first available station automatically.

Store FM radio stations manually

Note

- You can store a maximum of 20 FM radio stations.

- 1 In FM tuner mode, tune to an FM radio station.
- 2 Press **SCAN /PROG.**
↳ The preset number begins to blink.
- 3 Press **+ PRESET/ MIN -** repeatedly to select a number.
- 4 Press **SCAN/PROG** again to confirm.
- 5 Repeat steps 1 to 4 to store other stations.

Note

- To remove a pre-stored station, store another station in its place.

Select a preset radio station

- In FM tuner mode, press **+ PRESET/ MIN -** repeatedly to select a preset radio station.

Adjust volume

- Rotate the **VOL** knob to increase or decrease the volume level.

5 Use Bluetooth devices

With this clock radio, you can listen to audio from Bluetooth-enabled devices and control the incoming call through Bluetooth.

Connect a device

Note

- Make sure that your Bluetooth device is compatible with this product.
- Before pairing a device with this product, read its user manual for Bluetooth compatibility.
- This product can memorize a maximum of 4 paired devices.
- Make sure that Bluetooth function is enabled on your device, and your device is set as visible to all other Bluetooth devices.
- The operational range between this product and a Bluetooth device is approximately 10 meters (30 feet).
- Any obstacle between this product and a Bluetooth device can reduce the operational range.
- Keep away from any other electronic device that may cause interference.

- 1 Press **⌘** to enter Bluetooth mode.
↳ **Bluetooth** icon flashes quickly on the display.
- 2 On your Bluetooth device, enable Bluetooth and search for Bluetooth devices (refer to the user manual of the device).
- 3 When **[Philips AJT4400B]** is displayed on your device, select it to start pairing and connection. If necessary, enter default password "0000".
↳ After successful pairing and connection, **⌘** icon stops flashing, and the clock radio beeps twice.

Note

- If your Bluetooth device has been paired with **AJT4400B** before, you just need to find out **[AJT4400B]** on your Bluetooth menu, then start the connection.

To disconnect the Bluetooth-enabled device:

- Press and hold **⌘** for 3 seconds;
- Disable Bluetooth on your device; or
- Move the device beyond the communication range.

To connect another Bluetooth-enabled device:

- Disable Bluetooth on the current device, and then connect another device.

Enter Bluetooth pairing mode

- Press and hold **⌘** to enter Bluetooth pairing mode if you fail to search for **"Philips AJT4400B"** or cannot pair with the clock radio.
↳ The clock radio beep once.
↳ The Bluetooth icon flashes quickly.

Play audio from Bluetooth-enabled device

Note

- If there is an incoming call on the connected mobile phone, music play pauses.

After successful Bluetooth connection, play audio on the Bluetooth device.

- ↳ Audio comes out from the clock radio.
- You can press **⏮** to start, pause or resume play.

Bluetooth icon status

Bluetooth icon	Description
Flashing quickly (at 1Hz)	Connecting or waiting for connection
Flash slowly (at 2Hz, with single beep)	Pairing
Solid Bluetooth icon	Connected
Bluetooth icon off	Bluetooth function is turned off




Clear the pairing information

In Bluetooth mode, press and hold ***** for 10 seconds.

- ↳ **[BT RESET]** scrolls on the display panel, then all the Bluetooth pairing information is erased.
- ↳ The clock radio returns to Bluetooth mode automatically after erasion is completed.

Control your phone call

After Bluetooth connection, you can control your incoming phone call with this product.

Button	Function
	Press to answer an incoming call.
	During a call, press to end the current call.
	Press and hold to reject an incoming call.



Note

- Music play pauses when there is an incoming call.

6 Set alarm timer

Set alarm

You can set two alarms to ring at different time.



Note

- Make sure that the clock is set correctly.

- 1 Press and hold **⏸** or **⏹** for two seconds to activate alarm setting mode.
↳ The hour and minute digits and the alarm icon (**⏸** or **⏹**) begin to blink.
- 2 Press + **TUNING/ HR** - to set hour.
- 3 Press + **PRESET/ MIN** - to set minute.
- 4 Press **⏸** or **⏹** to confirm.
↳ **[buz]** (buzzer) or your last listened frequency blinks.
- 5 Press + **TUNING/ HR** - or + **PRESET/ MIN** - to select an alarm source: buzzer or your last listened channel.
- 6 Press **⏸** or **⏹** to confirm.



Tip

- If buzzer is selected as alarm source, volume increases gradually.
- If your last listened radio station is selected as alarm source, rotate the volume knob to adjust the alarm volume.

Activate/deactivate alarm timer

- Press **⏸** or **⏹** repeatedly to activate or deactivate the alarm timer.
↳ **⏸** or **⏹** appears if the alarm timer is on and disappears if it is off.
 - To stop the alarm, press the corresponding **⏸** or **⏹**.
 - ↳ The alarm repeats ringing for the next day.

Snooze the alarm

- When alarm sounds, press **SNOOZE**.
↳ The alarm snoozes and repeats ringing nine minutes later.

7 Other features

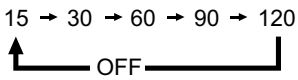
Note

- The maximum current for USB charging is 1A.
- It is not guaranteed to charge all devices with this product.

Set sleep timer

This clock radio can switch to standby mode automatically after a preset period.

- Press **zZ** repeatedly to select the sleep timer period (in minutes).

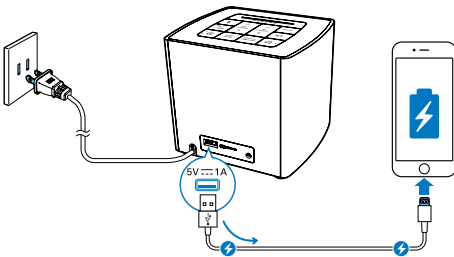


To deactivate the sleep timer:

In sleep timer setting mode, press **zZ** repeatedly until **[OFF]** (off) appears.

Charge your device

With this clock radio, you can charge your external devices, such as your cell phone, MP3 player or other mobile devices.



- Use a USB cable (not supplied) to connect your device with the clock radio.
 - ↳ Once the device is recognized, the charging starts.

Adjust display brightness

Press **BRIGHTNESS** repeatedly to select different brightness levels.

8 Product information



Note

- Product information is subject to change without prior notice.

Specifications

Amplifier

Rated Output Power	2 W RMS
--------------------	---------

Tuner

Tuning Range (FM)	87.5 - 108 MHz
Tuning Grid	100 KHz
Search Selectivity	<28 dBf
Total Harmonic Distortion	<3%
Signal to Noise Ratio	>55 dB

Bluetooth

Bluetooth version	V3.0+EDR
Supported profiles	HFP,AD2P,AVRCP
Range	10 m (Free space)

USB

Charging Support	5V, 1 A
------------------	---------

General information

AC Power	100-240V ~, 50/60 Hz
Battery	Two AA batteries
Operation Power Consumption	<10 W
Standby Power Consumption	<1 W
Dimensions - Main Unit	
(W x H x D)	129 x 104 x 105 mm
Weight - Main Unit	0.5 kg

9 Troubleshooting



Warning

- Never remove the casing of this device.

To keep the warranty valid, never try to repair the system yourself.

If you encounter problems when using this device, check the following points before requesting service. If the problem remains unsolved, go to the Philips Web page (www.philips.com/support). When you contact Philips, make sure that the device is nearby and the model number and serial number are available.

No power

- Ensure that the AC power plug of the clock radio is connected properly.
- Ensure that there is power at the AC outlet.

No response from the clock radio

- Disconnect and reconnect the AC power plug, then turn on the clock radio again.

Poor radio reception

- Keep the clock radio away from other electronic devices to avoid radio interference.
- Fully extend and adjust the position of the FM antenna.

Alarm does not work

- Set the clock/alarm correctly.

10 Notice

Any changes or modifications made to this device that are not expressly approved by Gibson Innovations may void the user's authority to operate the equipment.

Compliance

Notice for the USA and Canada

This device complies with Part 15 of the FCC Rules and RSS standard of Industry Canada. Operation is subject to the following two conditions:

- 1 this device may not cause harmful interference, and
- 2 this device must accept any interference received, including interference that may cause undesired operation.

This equipment has been tested and found to comply with the limits for a Class B digital device, pursuant to part 15 of the FCC Rules and CAN ICES-3(B)/NMB-3(B) of Industry Canada. These limits are designed to provide reasonable protection against harmful interference in a residential installation. This equipment generates, uses, and can radiate radio frequency energy and, if not installed and used in accordance with the instruction manual, may cause harmful interference to radio communications.

However, there is no guarantee that interference will not occur in a particular installation. If this equipment does cause harmful interference to radio or television reception, which can be determined by turning the equipment off and on, the user is encouraged to try to correct the interference by one or more of the following measures:

- Relocate the receiving antenna.
- Increase the separation between equipment and receiver.

- Connect the equipment into an outlet on a circuit different from that to which the receiver is connected.
- Consult the dealer or an experienced radio/TV technician for help.

RF Radiation Exposure Statement: This equipment complies with FCC's and IC's RF radiation exposure limits set forth for an uncontrolled environment. The antenna(s) used for this transmitter must be installed and operated to provide a separation distance of at least 20 cm from all persons and must not be collocated or operating in conjunction with any other antenna or transmitter. Installers must ensure that 20cm separation distance will be maintained between the device (excluding its handset) and users.

CAN ICES-3(B)/NMB-3(B).

Care of the environment

Disposal of your old product and battery



Your product is designed and manufactured with high quality materials and components, which can be recycled and reused.

This product may contain lead and mercury. Disposal of these materials may be regulated due to environmental considerations. For disposal or recycling information, please contact your local authorities or visit www.recycle.philips.com.

This product contains batteries:

- Dispose of batteries properly. Do not incinerate. Batteries may explode if overheated.
- Do not wrap in metal or aluminum foil. Wrap in newspaper before discarding.
- It is suggested that you contact your local town or city to determine proper battery redemption site(s) in your area.

- Please visit www.call2recycle.org for additional information on a recycling center in your area for rechargeable batteries.

Environmental information

All unnecessary packaging has been omitted. We have tried to make the packaging easy to separate into three materials: cardboard (box), polystyrene foam (buffer) and polyethylene (bags, protective foam sheet.)

Your system consists of materials which can be recycled and reused if disassembled by a specialized company. Please observe the local regulations regarding the disposal of packaging materials, exhausted batteries and old equipment.



The Bluetooth ® word mark and logos are registered trademarks owned by Bluetooth SIG, Inc. and any use of such marks by Gibson is under license. Other trademarks and trade names are those of their respective owners.



The making of unauthorized copies of copy-protected material, including computer programs, files, broadcasts and sound recordings, may be an infringement of copyrights and constitute a criminal offence. This equipment should not be used for such purposes.

Note

- The type plate is located on the bottom of the product.



2015 © Gibson Innovations Limited. All rights reserved.

This product has been manufactured by, and is sold under the responsibility of Gibson Innovations Ltd., and Gibson Innovations Ltd. is the warrantor in relation to this product.

Philips and the Philips Shield Emblem are registered trademarks of Koninklijke Philips N.V. and are used under license from Koninklijke Philips N.V.

