

## Software/driver information

Software version 20070710 for AJL308/37 AJL308/17 & AJL308/12

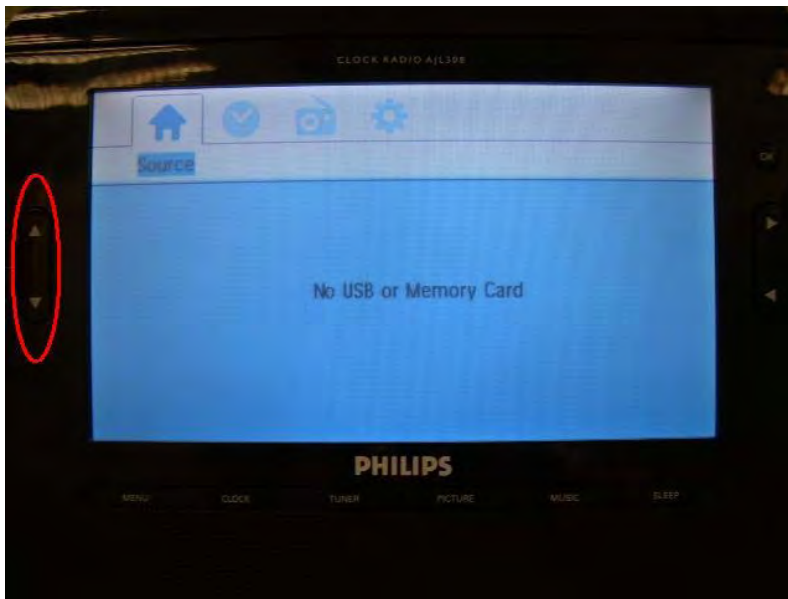
## Benefits

- Fixing the problem of displaying the wrong day of the week in the calendar.

## Do I need the software?

To check the firmware version of your device

1. Power **on** the main unit
2. Go to "**SETUP Menu**"
3. Go to "**Source Page**"
4. Press "**Up**", "**Down**", "**Up**", "**Down**", "**Up**", "**Up**", "**Down**"



5. The software version will show on the display. Should you already have the latest software then there is no need to do the upgrade.

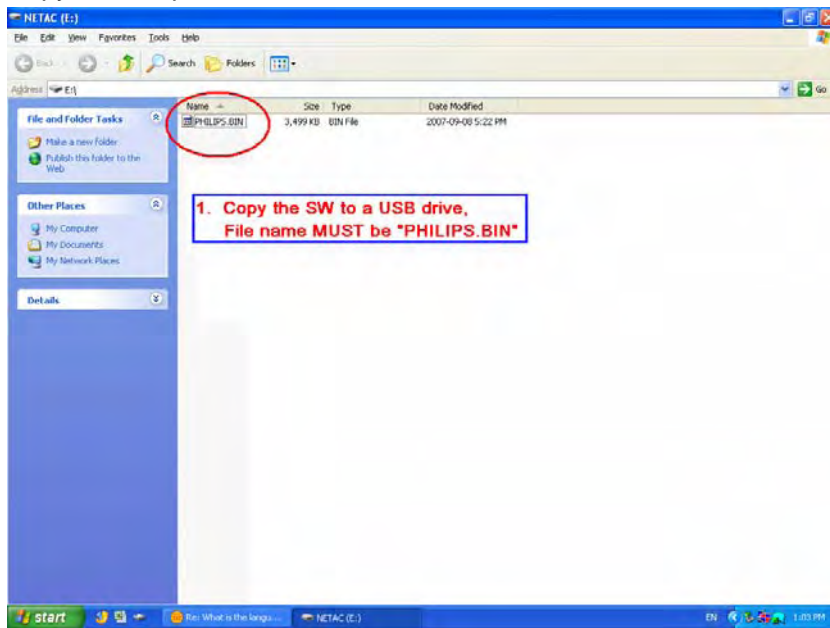
## How to download the software to your PC

1. Launch the Internet Explorer
2. Enter the Philips support site at url <http://www.philips.com/support>
3. Select your resided country & language
4. Enter the model number
5. Click on Software under Product Support
6. Double click your desired language under Firmware software upgrade to download the zip file to your PC.
7. Unzip the file into a temp directory.

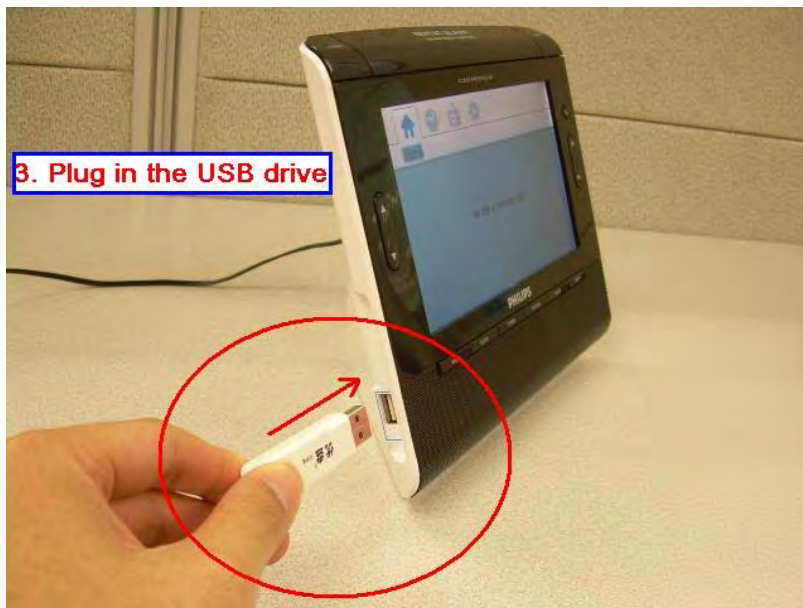
## How to upload the software to your device

1. Connect the AC adapter between the wall power supply and the clock radio and **make sure that the clock radio is connected to AC power at all time during the software upgrade process.**

2. Copy the Philips.bin file into a USB drive or SD card



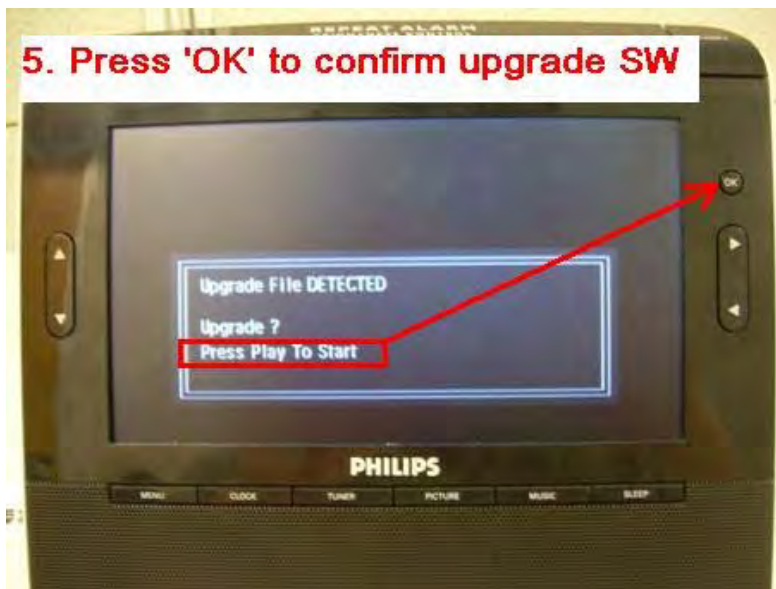
3. Power on the clock radio and then insert the USB drive or SD card. **Please DO NOT disconnect the USB drive or SD card until the software upgrade is completed.**



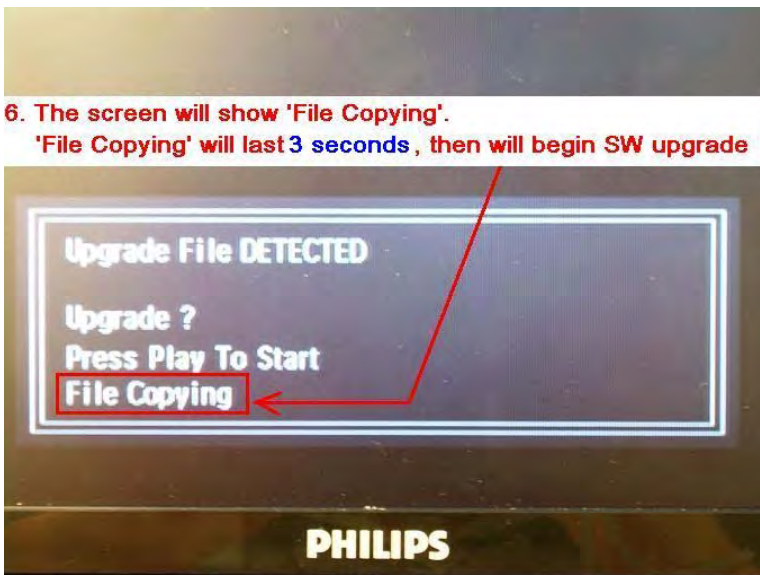
4. Press OK to select USB device or SD card



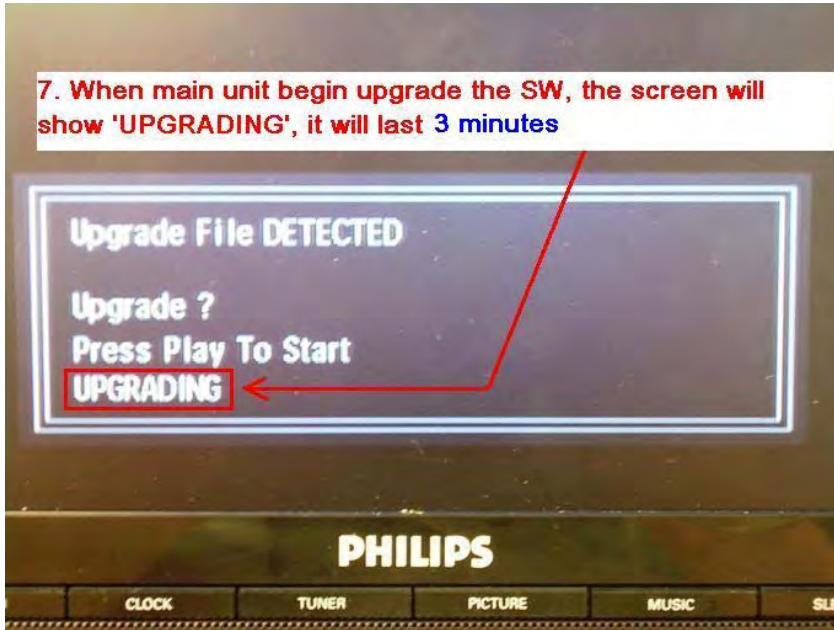
5. Press OK to confirm upgrade of software



6. The screen will show "File Copying" The message will show for 3 seconds and then the software upgrade will begin.



7. When main unit starts to upgrade the software, the display will show "UPGRADING", it will last 3 minutes.



8. After 3 minutes, the unit will auto-restart.

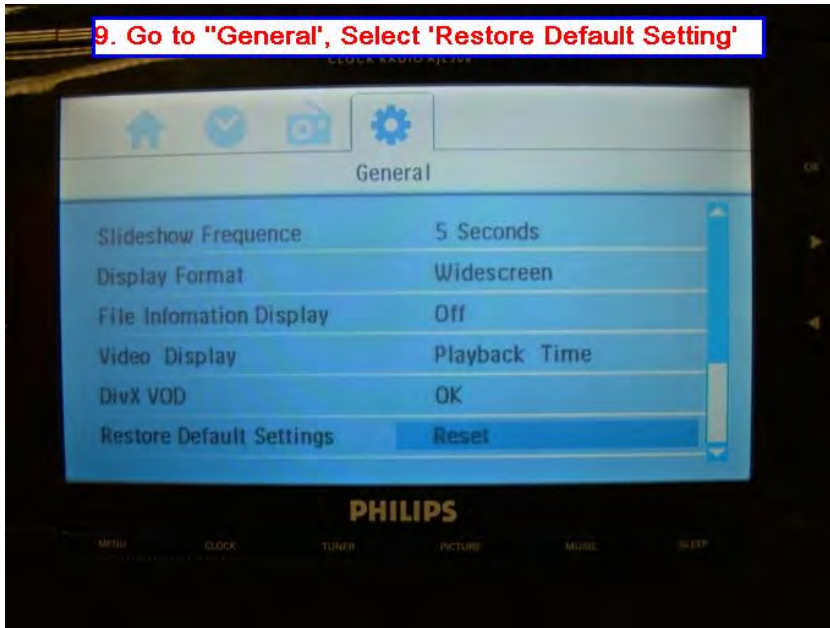
**8. After around 3 minutes , the main unit will auto-restart again**



9. Go to "General", select "Restore default setting"



**9. Go to "General", Select 'Restore Default Setting'**



10. The main unit will enter the clock mode.

**10. The main unit will jump to 'CLOCK' mode**



11. Remove the USB drive or SD card from the clock radio and then unplug and then reconnect the power supply of the clock radio again.

11. power off, power on the main unit again

