

Register your product and get support at
www.philips.com/welcome

AJB4600



EN User manual

PHILIPS

1 Important

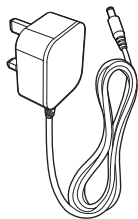
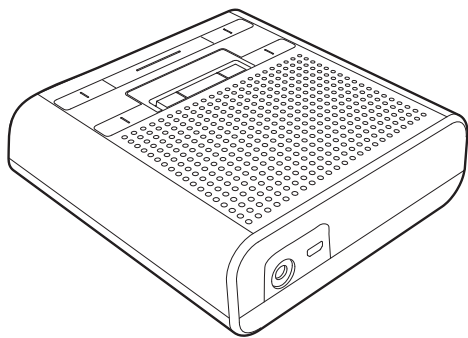
- Read these instructions.
- Heed all warnings.
- Follow all instructions.
- Do not block any ventilation openings. Install in accordance with the manufacturer's instructions.
- Do not install near any heat sources such as radiators, heat registers, stoves, or other apparatus (including amplifiers) that produce heat.
- Protect the power cord from being walked on or pinched, particularly at plugs, convenience receptacles, and the point where they exit from the clock radio.
- Only use attachments/accessories specified by the manufacturer.
- Unplug this clock radio during lightning storms or when unused for long periods of time.
- Refer all servicing to qualified service personnel. Servicing is required when the clock radio has been damaged in any way, such as power-supply cord or plug is damaged, liquid has been spilled or objects have fallen into the clock radio, the clock radio has been exposed to rain or moisture, does not operate normally, or has been dropped.
- This clock radio shall not be exposed to dripping or splashing.
- Do not place any sources of danger on the clock radio (e.g. liquid filled objects, lighted candles).
- Where the plug of the Direct Plug-in Adapter is used as the disconnect device, the disconnect device shall remain readily operable.

2 Your DAB clock radio

Congratulations on your purchase, and welcome to Philips! To fully benefit from the support that Philips offers, register your product at www.philips.com/welcome.

What's in the box

Check and identify the contents of your package:



3 Get started

Prepare FM/DAB antenna

For better reception, fully extend and adjust the position of the FM/DAB antenna.



Note

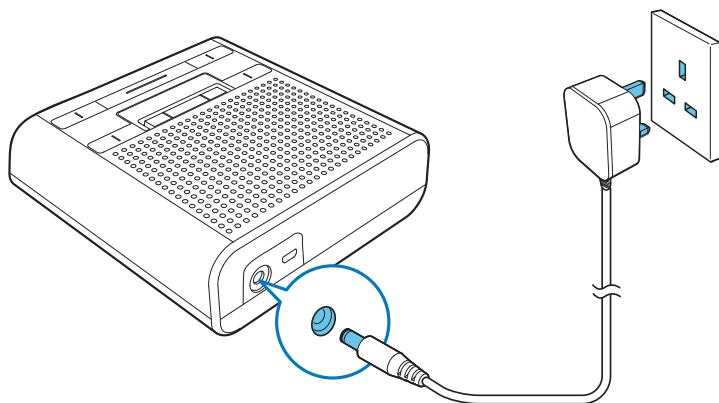
- To prevent interference, position the antenna as far as possible from TV, VCR, or other radiation source.

Connect power



Caution

- Risk of product damage! Ensure that the power voltage corresponds to the voltage printed on the back or underside of the clock radio.
- Risk of electric shock! When you unplug the AC adaptor, always pull the plug from the socket. Never pull the cord.



Note

- The type plate is located at the bottom of the clock radio.

Set time

- 1 Press and hold **SOURCE** for two seconds.
↳ [STANDBY] is displayed.
- 2 Press and hold **SET TIME** for two seconds.
↳ The current time is displayed.
↳ The hour digits begin to blink.
- 3 Press **TUNING** ◀ / ▶ to set the hour.
- 4 Press **SET TIME** to confirm.
↳ The minute digits begin to blink.

5 Press **TUNING** ◀/▶ to set the minute.

6 Press **SET TIME** to confirm.



Note

- When the clock radio connects to power for the first time, the hour/minute digits blink, go directly to step 2 to set time.

4 Listen to Digital Audio Broadcasts (DAB)

Digital Audio Broadcasting (DAB) is a way of broadcasting radio digitally through a network of transmitters. It provides you with more choice, better sound quality and more information.

Tune to DAB radio stations



Note

- Make sure that the antenna is fully extended.

- 1 Press **SOURCE** repeatedly to select DAB mode.
↳ **[Full SCAN]** (full scan) is displayed.
- 2 Press **SELECT** to start full scan.
 - ↳ The unit stores all the DAB radio stations automatically in alphabetical order and then broadcasts the first available station.
 - ↳ The station list is memorized in the unit. Next time when you turn on the unit, the station scan does not take place.
 - ↳ If no DAB station is found, **[NO DAB]** (no DAB) appears.

To tune to a station from the available station list:

In DAB mode, press **TUNING** ◀ / ▶ to navigate through the available DAB stations.

Scan DAB radio stations automatically



Tip

- New stations and services will be added in the DAB broadcast. To make new DAB stations and services available, perform full scan regularly.

In DAB mode, press and hold **PROG/AUTOSCAN** for 3 seconds.

↳ The unit stores all the available DAB radio stations automatically.

↳ The first available station broadcasts.

Store DAB radio stations manually

You can store up to 20 DAB radio stations in preset channel.

- 1 Tune to a DAB radio station.
- 2 Press **PROG/AUTOSCAN** to activate the storing mode.
- 3 Press **PRESET ▲ ▼** to select a preset number.
 - ↳ If this position is occupied, the previous stored DAB station name will be displayed;
 - ↳ If this position is empty, the preset number will be displayed;
- 4 Press **PROG/AUTOSCAN** to confirm.
- 5 Repeat steps 1-4 to store other stations.



Note

- To remove a pre-stored DAB radio station, store another station in its place.

Listen to a preset DAB radio station

In DAB mode, press **PRESET** ▲ ▼ to select a preset number.

Display DAB information

- 1 Tune to a DAB radio station.
- 2 Press **INFO/MENU** repeatedly to scroll through the following information (if available):
 - ↳ Station name
 - ↳ DLS
 - ↳ Strength
 - ↳ No PTY/ (pty)
 - ↳ Ensemble
 - ↳ Freq channel
 - ↳ Signal error
 - ↳ Bitrate
 - ↳ Codec
 - ↳ Time
 - ↳ Date

Use DAB menu

- 1 In DAB mode, press and hold **INFO/MENU** for two seconds to access DAB menu.
- 2 Press **TUNING** ◀ / ▶ to scroll through the menu options:
 - **[Full scan]**: scan all the available DAB radio stations.

- **[Manual]**: tune to a specific channel/frequency manually and add it to the station list.
- **[DRC]**: add or remove a degree of compensation for the differences in the dynamic range between radio stations.
- **[Prune]**: Remove all the invalid stations from the station list.
- **[System]**: Adjust system settings.

3 To select an option, press **SELECT**.

4 Repeat steps 2-3 if sub-option is available under one option.

[DRC] (Dynamic range control)

- **[DRC high]** (DRC high): set DRC in high level.
- **[DRC low]** (DRC low): set DRC in low level.
- **[DRC off]** (DRC off): turn off DRC.



Note

- DRC only works if it is enabled by the broadcaster for a specific station.

[System]

- **[Reset]**: reset all the settings to factory default.
- **[Upgrade]**: update software if available.
- **[SW ver]**: know the software version of the unit.
- **[Time]**: select 24H or 12H mode; and set time synchronization.



Note

- Select **[System]** > **[Time]** > **[Update]** > **[DAB]** to set time synchronization. The clock radio will synchronize time with DAB signal.
- If the system is idle for 15 seconds, the menu exits.

5 Listen to FM radio

Tune to FM radio stations

- 1 Press **SOURCE** repeatedly to select FM mode.
↳ **[FM]** is displayed.
- 2 Press and hold **TUNING** ◀ / ▶ for two seconds.
↳ The FM tuner tunes to a station with strong reception automatically.

To search for a radio station manually:

Press **TUNING** ◀ / ▶ to tune to a radio station.

Store FM radio stations automatically

- 1 In FM radio mode, press and hold **PROG/AUTOSCAN** for two seconds.
↳ All available FM radio stations are stored automatically.
↳ The first stored radio station broadcasts.
-

Store FM radio stations manually

You can store up to 20 FM radio stations in preset channel.

- 1 Tune to an FM radio station.
- 2 Press **PROG/AUTOSCAN** to activate the storing mode.
- 3 Press **PRESET** ▲ ▼ to select the preset number.
↳ If this position is occupied, the previous stored frequency will be displayed;
↳ If this position is empty, the preset number will be displayed;
- 4 Press **PROG/AUTOSCAN** to confirm.

5 Repeat steps 1-4 to store other stations.



Tip

- To remove a pre-stored FM radio station, store another station in its place.

Listen to a preset FM radio station

In FM mode, press **PRESET** ▲ ▼ to select a preset number.

Display RDS information

Radio Data System (RDS) is a service that sends additional broadcast information along with FM stations.

- 1 Tune to an RDS station.
- 2 Press **INFO/MENU** repeatedly to scroll through the following RDS information (if available):
 - ↳ Frequency
 - ↳ RT (radio text)
 - ↳ PTY (program type)
 - ↳ Station Name
 - ↳ Stereo/Mono
 - ↳ Time
 - ↳ Date

Use FM menu

- 1 In FM mode, press and hold **MENU** for two seconds to access FM menu.

- 2 Rotate **TUNING** ◀ / ▶ to scroll the menu options:
 - **[Scan settings]**
 - **[System]**
- 3 To select an option, press **SELECT**.
- 4 Repeat steps 2-3 if sub-option is available under one option.

[Scan setting]

- **[Strong]**: scan stations with strong signals only.
- **[All]**: scan all the available radio stations.

[System]

- **[Reset]**: reset all the settings to factory default.
- **[Upgrade]**: update software if available.
- **[SW ver]**: know the software version of the unit.
- **[Time]**: select 24H or 12H mode.



Note

- If the system is idle for 15 seconds, the menu exits.

6 Other features

Set alarm timer



Note

- Make sure that you have set the clock correctly.



Tip

- When alarm sounds, volume rises gradually. You cannot adjust the alarm volume manually.

You can set two separate alarm timers. For the alarm sound, you can select the FM radio, DAB radio, or the buzzer.

- 1 Press and hold **AL1/AL2** for two seconds.
↳ **AL1/AL2** icon and the hour digits blink.
- 2 Press **TUNING** ◀ / ▶ to set the hour.
- 3 Press **AL1/AL2** to confirm.
↳ The minute digits blink.
- 4 Press **TUNING** ◀ / ▶ to set the minute.
- 5 Press **AL1/AL2** to confirm.
- 6 Press **TUNING** ◀ / ▶ to select a sound source: DAB, FM or Buzzer.
- 7 Press **AL1/AL2** to confirm.
- 8 Press **TUNING** ◀ / ▶ to set the volume.
- 9 Press **AL1/AL2** to confirm.
↳ The alarm icon is displayed.
↳ The clock radio turns on automatically at the set time and switches to the selected source.

Activate/deactivate alarm timer



Note

- Make sure that you already set the alarms successfully.
- 1 Press **AL1/AL2** repeatedly to activate or deactivate the alarm timer:
 - ↳ The alarm icon appears if the alarm timer is activated and disappears if it is deactivated .
 - ↳ The alarm settings retain for the next day.
 - 2 When the alarm is ringing or in snoozing mode, press **AL1/AL2**.
 - ↳ The alarm switches off ,
 - ↳ The alarm icon is still displayed.

Snooze alarm

When alarm sounds, press **SNOOZE** repeatedly to choose the snooze time.

- 5 minutes
- 10 minutes
- 15 minutes
- 30 minutes
 - ↳ The alarm icon keeps blinking.
 - ↳ The alarm snoozes and repeats ringing 5 /10/15/30 minutes later

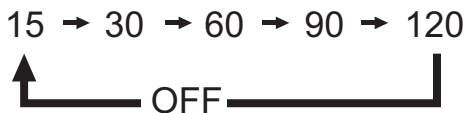
Set sleep timer

This clock radio can switch to standby mode automatically after a preset period.

Press **SLEEP** repeatedly to select the sleep timer period (in minutes).

↳ When the sleep timer is activated, **zZ** appears.

To deactivate the sleep timer, press **SLEEP** repeatedly until **[OFF]** (off) appears.



Adjust volume

While listening, press **-VOLUME +** to adjust volume.

Adjust display brightness

Press **SNOOZE** repeatedly to select different brightness levels.

Update software (if available)

Software upgrade for your radio may be available in future. If you register your product at Philips website (www.philips.com/welcome) with a valid email address, you may receive software update notification. Or you can visit Philips website constantly to check if the updating information is provided.

To update software of your radio, connect to a PC through the USB socket at the back of the clock radio, and follow the update instructions on Philips website.

7 Product information



Note

- Product information is subject to change without prior notice.

Specifications

Tuner

Tuning Range	FM: 87.5 - 108MHz DAB: 174.92 - 239.20MHz
--------------	----------------------------------------------

Tuning grid (FM)	50 KHz
------------------	--------

Sensitivity - Mono, 26dB S/N Ratio	< 22dBf
---------------------------------------	---------

Search Selectivity	> 28dBf
--------------------	---------

Total Harmonic Distortion	< 3%
---------------------------	------

Signal to Noise Ratio	>50 dB
-----------------------	--------

General information

AC power	Model: AS060-060-EI100; Input: 100 - 240V, ~50/60Hz, 0.15A; Output: 6.0V $\overline{=}$ 1.0A
----------	----------------------------------------------------------------------------------------------------

Operation Power Consumption	5W
-----------------------------	----

Standby Power Consumption	<1W
---------------------------	-----

Dimensions

- Main Unit (W x H x D)	150 x 50 x 165 mm
-------------------------	-------------------

Weight

- Main Unit	0.3 kg
-------------	--------

- With Packing	0.5 kg
----------------	--------

8 Troubleshooting



Warning

- Never remove the casing of this device.

To keep the warranty valid, never try to repair the system yourself. If you encounter problems when using this device, check the following points before requesting service. If the problem remains unsolved, go to the Philips Web page (www.philips.com/support). When you contact Philips, make sure that the device is nearby and the model number and serial number are available.

No power

- Ensure that the AC power plug of the unit is connected properly.
- Ensure that there is power at the AC outlet.

No sound

- Adjust the volume.

No response from the unit

- Disconnect and reconnect the AC power plug, then turn on the unit again.

Poor radio reception

- Increase the distance between the unit and your TV or VCR.
- Fully extend the FM antenna.

Alarm does not work

- Set the clock/alarm correctly.

Clock/alarm setting erased

- Power has been interrupted or the power plug has been disconnected.
- Reset the clock/alarm.

9 Notice



This product complies with the radio interference requirements of the European Community.

Recycling



Your product is designed and manufactured with high quality materials and components, which can be recycled and reused. When you see the crossed-out wheel bin symbol attached to a product, it means the product is covered by the European Directive 2002/96/EC:



Never dispose of your product with other household waste. Please inform yourself about the local rules on the separate collection of electrical and electronic products. The correct disposal of your old product helps prevent potentially negative consequences on the environment and human health.

Environmental information

All unnecessary packaging has been omitted. We have tried to make the packaging easy to separate into three materials: cardboard (box),

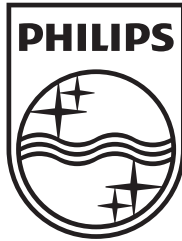
polystyrene foam (buffer) and polyethylene (bags, protective foam sheet.)

Your system consists of materials which can be recycled and reused if disassembled by a specialized company. Please observe the local regulations regarding the disposal of packaging materials, exhausted batteries and old equipment.

Any changes or modifications made to this device that are not expressly approved by Philips Consumer Lifestyle may void the user's authority to operate the equipment.

2012 © Koninklijke Philips Electronics N.V. All rights reserved.

Specifications are subject to change without notice. Trademarks are the property of Koninklijke Philips Electronics N.V. or their respective owners. Philips reserves the right to change products at any time without being obliged to adjust earlier supplies accordingly.



All registered and unregistered trademarks are property of their respective owners.

© 2012 Koninklijke Philips Electronics N.V.

All rights reserved.

AJB4600_05_UM_V1.0

