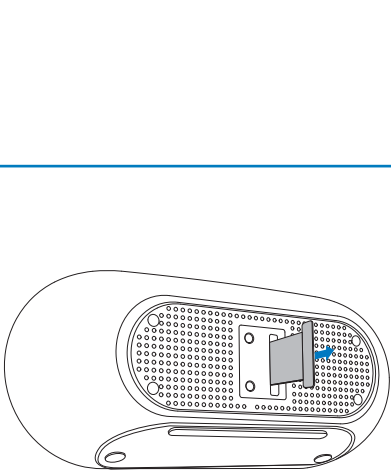
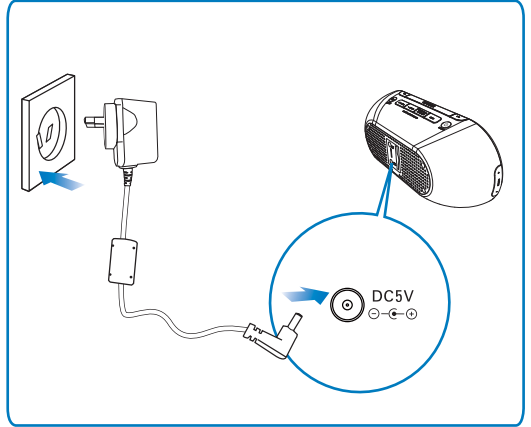


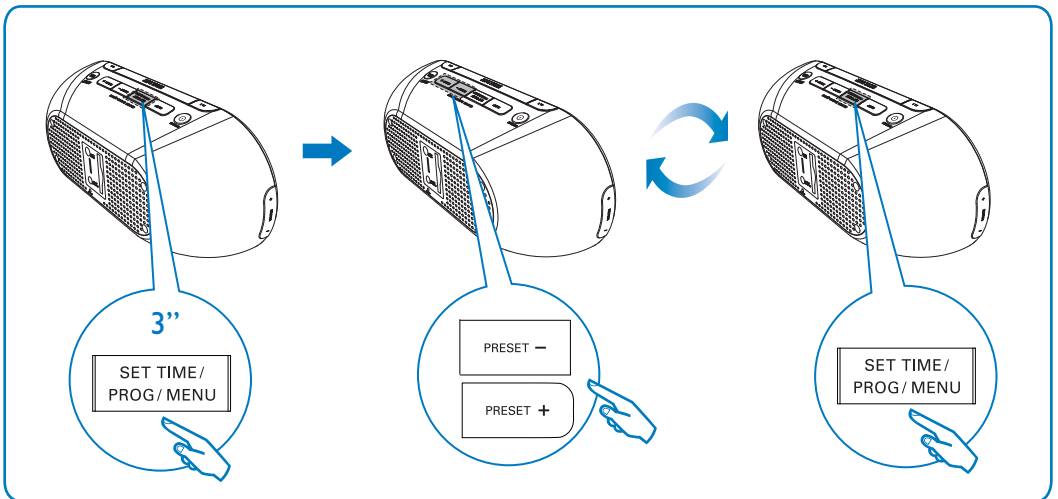
**1** Remove the protective tab



**2** Connect power



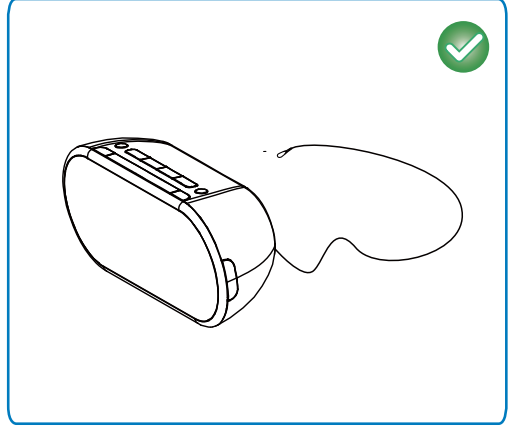
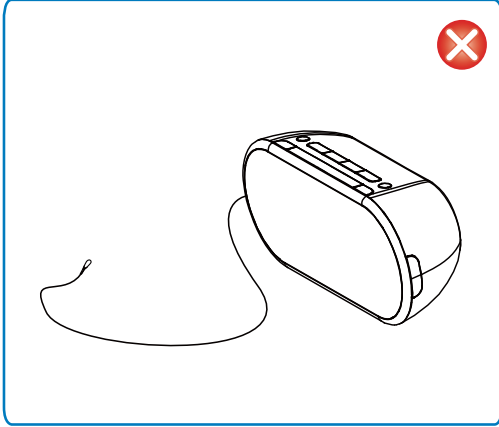
**3** Set clock



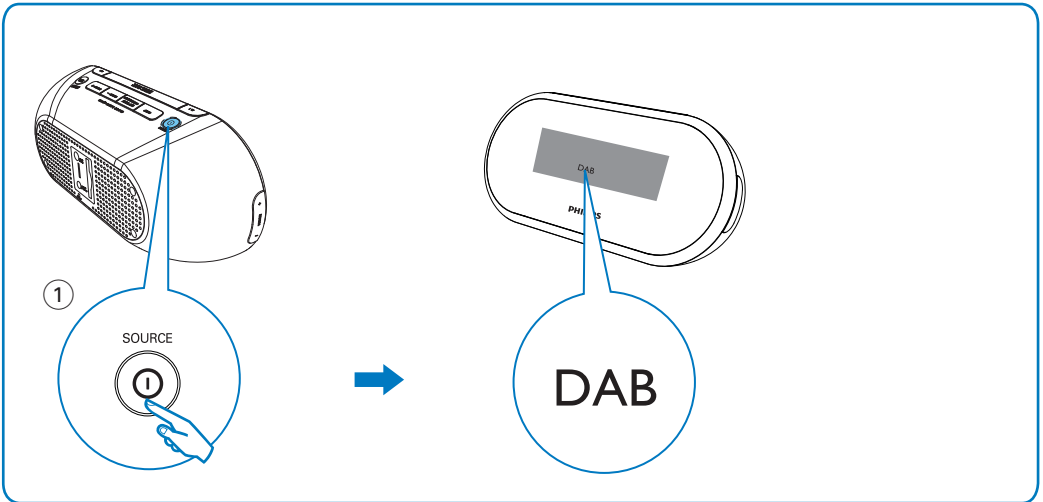
## 4 Position the antenna

### Note:

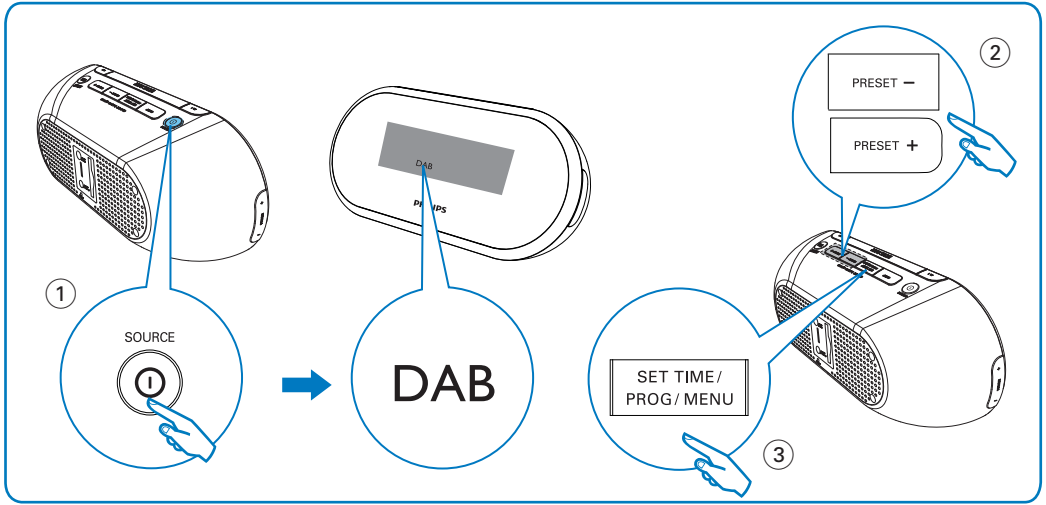
For optimal reception, fully extend the antenna and place it at the back of the clock radio.



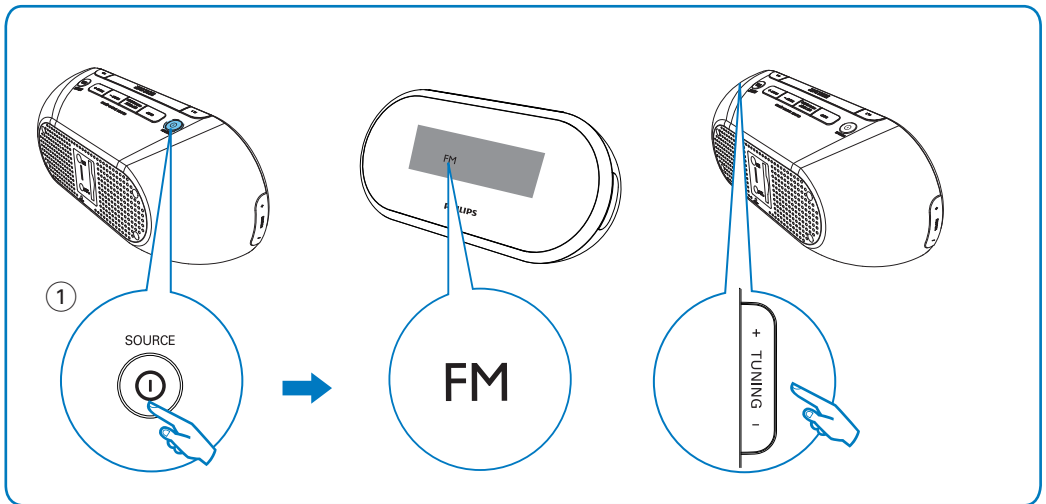
## 5 Listen to DAB radio



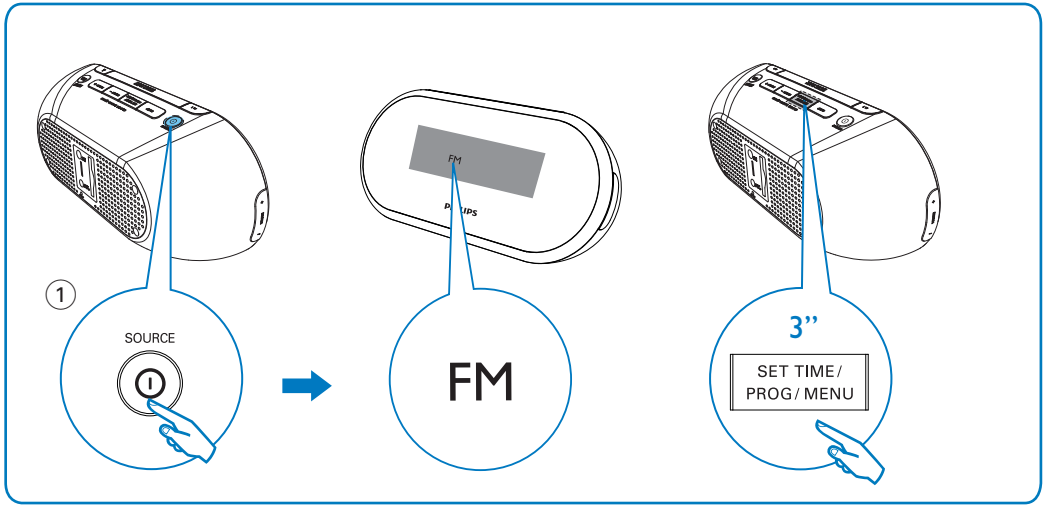
## 6 Store DAB radio station manually



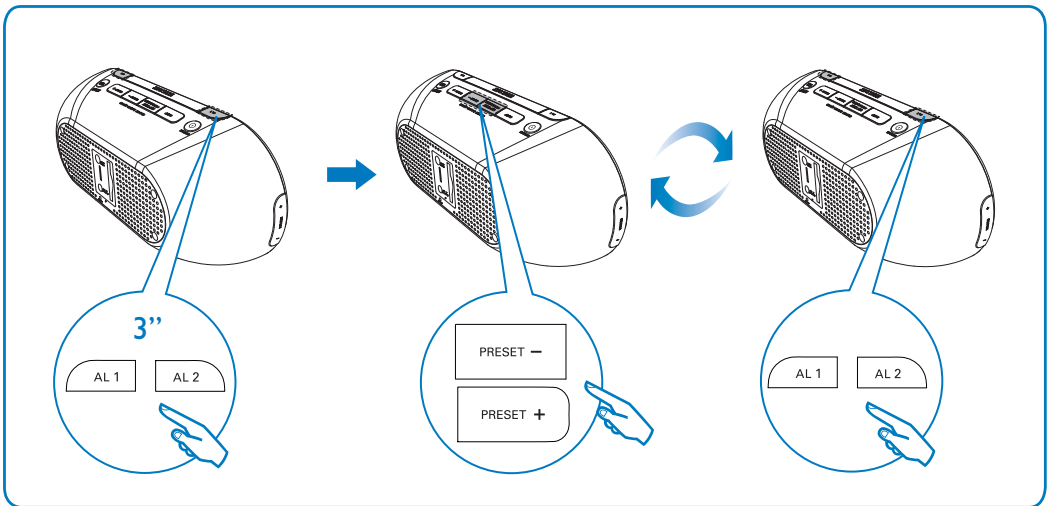
## 7 Listen to FM radio



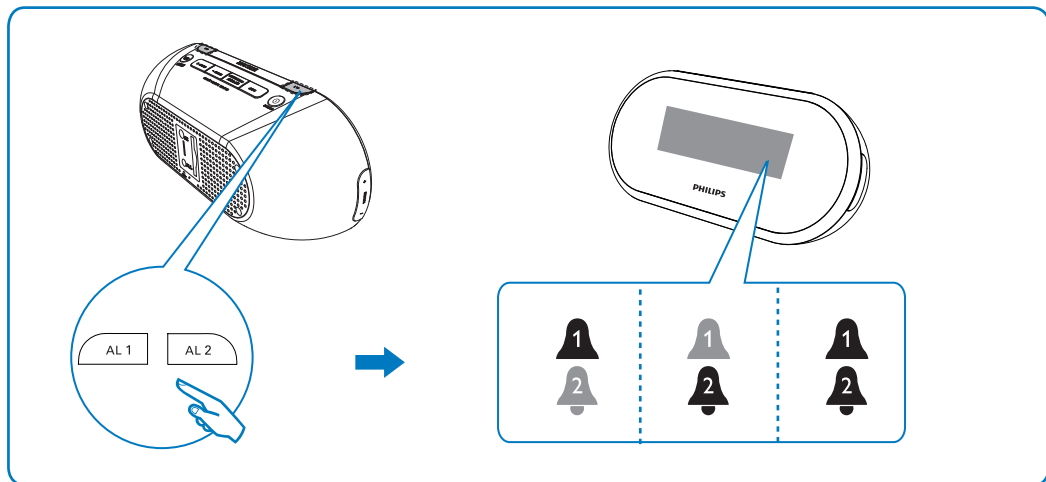
## 8 Store FM radio stations automatically



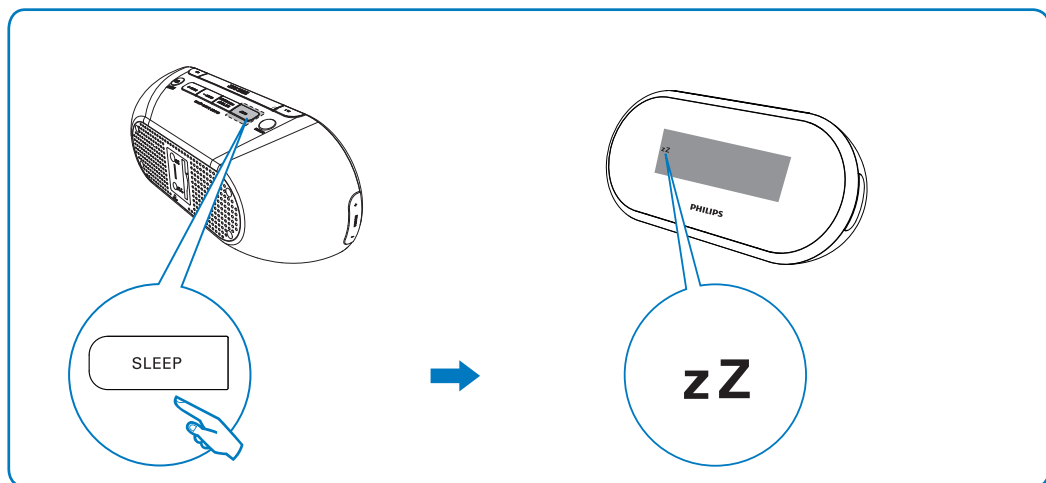
## 9 Set alarm



## 10 Activate/Deactivate alarm timer



## 11 Activate/Deactivate sleep timer



© Royal Philips Electronics N.V. 2010  
All rights reserved.

Specifications are subject to change without notice.  
Trademarks are the property of Koninklijke Philips  
Electronics N.V. or their respective owners.

AJB1002\_79\_QSG\_V2.0

