



# Quick start guide

AJ7050D



Always check the Safety and Precautions section of the Short User Manual before using the product.

**Tip:** Press **⏻** again to switch the unit to standby mode.

You can only use AC power as power supply. Batteries (not supplied) are for backup purpose.

**Listen to the iPod/iPhone/iPad**  
Press **SOURCE** repeatedly to select the DOCK source.

- To pause/resume play, press **OK/▶||**.
- To skip to a track, press **PRESET +/PRESET - (◀/▶)**.
- To search during play, press and hold **SET TIME (◀◀)/PROG/SCAN (▶▶)** or **PRESET +/PRESET - (◀/▶)**, then release to resume normal play.

**AUDIO IN**



**Store FM radio stations automatically**  
In tuner mode, press and hold **PROG/SCAN (▶▶)** for more than 3 seconds to activate automatic program mode.

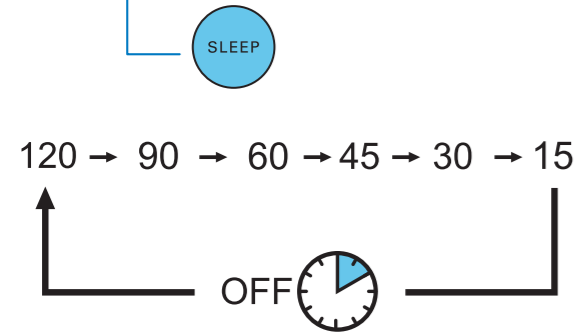
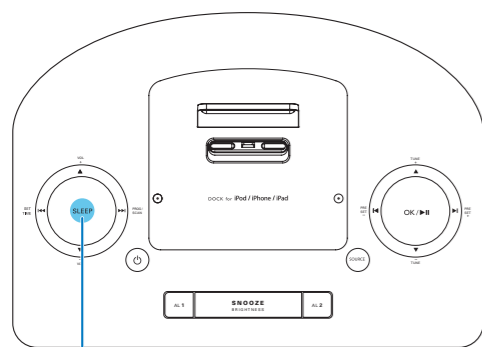
**EN Store FM radio stations manually**

- Tune to a radio station.
- Press **PROG/SCAN (▶▶)** to activate the program mode.
- Press **PRESET +/PRESET - (◀/▶)** to select a number.
- Press **OK/▶||** to confirm.
- Repeat the above steps to program other stations.

**EN 1** In standby mode, press and hold **SET TIME (◀◀)** for 3 seconds.

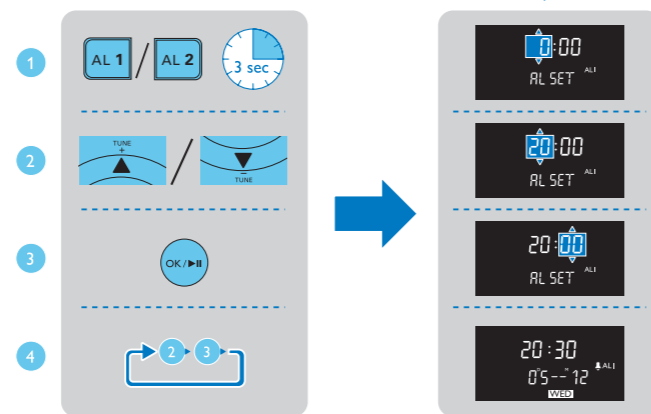
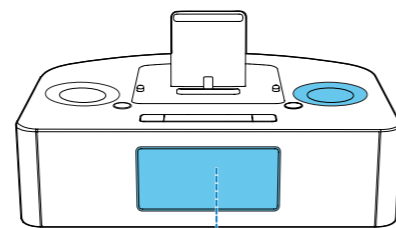
- Press **TUNE+/TUNE- (▲/▼)** to select the 12/24 hour format.
- Press **OK/▶||** to confirm.
- Press **TUNE+/TUNE- (▲/▼)** to set the hour.
- Press **OK/▶||** to confirm.
- Repeat steps 4-5 to set the minute, day, month, and year.



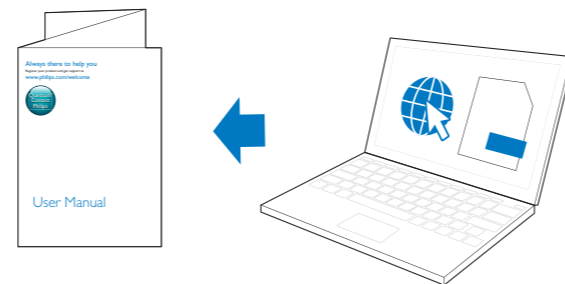


SLEEP

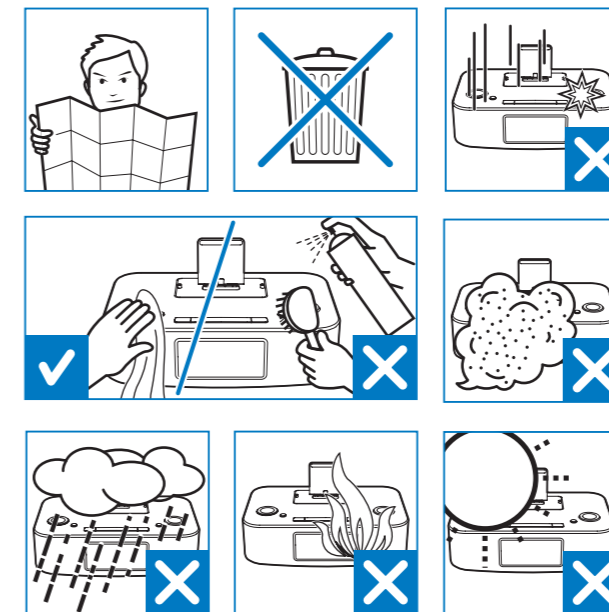
When the system is turned on, press it to select the sleep timer period.  
When [OFF] (off) is displayed, the sleep timer is deactivated.



- EN Make sure that you have set the clock correctly.
- 1 Press and hold **AL1/AL2** for 3 seconds.
  - 2 Press **TUNE+/TUNE-** (▲/▼) to set the hour.
  - 3 Press **OK/▶▶** to confirm.
  - 4 Repeat steps 2-3 to set the minute, select when to ring the alarm, choose alarm sound source, and set alarm volume.



To download the full user manual, visit [www.philips.com/support](http://www.philips.com/support).



## 1 Important

### Safety

#### Important Safety Instructions

- 1 Read these instructions.
- 2 Keep these instructions.
- 3 Heed all warnings.
- 4 Follow all instructions.
- 5 Do not use this apparatus near water.
- 6 Clean only with dry cloth.
- 7 Do not block any ventilation openings. Install in accordance with the manufacturer's instructions.
- 8 Do not install near any heat sources such as radiators, heat registers, stoves, or other apparatus (including amplifiers) that produce heat.
- 9 Protect the power cord from being walked on or pinched, particularly at plugs, convenience receptacles, and the point where they exit from the apparatus.
- 10 Only use attachments/accessories specified by the manufacturer.
- 11 Unplug this apparatus during lightning storms or when unused for long periods of time.
- 12 Refer all servicing to qualified service personnel. Servicing is required when the apparatus has been damaged in any way, such as power-supply cord or plug is damaged, liquid has been spilled or objects have fallen into the apparatus, the apparatus has been exposed to rain or moisture, does not operate normally, or has been dropped.
- 13 **Battery usage CAUTION –To prevent battery leakage which may result in bodily injury, property damage, or damage to the unit:**
  - Install all batteries correctly, + and - as marked on the unit.
  - Do not mix batteries (old and new or carbon and alkaline, etc.).
  - Remove batteries when the unit is not used for a long time.
  - Batteries (battery pack or batteries installed) shall not be exposed to excessive heat such as sunshine, fire or the like.

- 14 Apparatus shall not be exposed to dripping or splashing.
- 15 Do not place any sources of danger on the apparatus (e.g. liquid filled objects, lighted candles).
- 16 Where the MAINS plug or an appliance coupler is used as the disconnect device, the disconnect device shall remain readily operable.

#### Important notes for users in the U.K.

##### Mains fuse

This information applies only to products with a UK mains plug.

This product is fitted with an approved molded plug. If you replace the fuse, use one with:

- the ratings shown on the plug,
- a BS 1362 approval, and
- the ASTA approval mark.

Contact your dealer if you are not sure about what type of fuse to use.

Caution: To conform with the EMC directive (2004/108/EC), do not detach the plug from the power cord.

##### How to connect a plug

The wires in the power cord are colored as follows: blue = neutral (N), brown = live (L).

If the colors do not correspond with the colors on your plug, identify the terminals in your plug as follows:

- 1 Connect the blue wire to the terminal marked N or colored black.
- 2 Connect the brown wire to the terminal marked L or colored red.
- 3 Do not connect either wire to the earth terminal in the plug, marked E (or e) or colored green (or green and yellow).

Before you replace the plug cover, make sure that the cord grip is clamped over the sheath of the cable and not just over the two wires in the cable.

##### Copyright in the U.K.

Recording and playback of material may require consent. see Copyright Act 1956 and The performer's Protection Acts 1958 to 1972.

#### Warning

- Never remove the casing of this apparatus.
- Never lubricate any part of this apparatus.
- Never place this apparatus on other electrical equipment.
- Keep this apparatus away from direct sunlight, naked flames or heat.
- Ensure that you always have easy access to the power cord, plug or adaptor to disconnect the apparatus from the power.

### Notice



This product complies with the radio interference requirements of the European Community. Any changes or modifications made to this device that are not expressly approved by WOOX Innovations may void the user's authority to operate the equipment. Specifications are subject to change without notice. WOOX reserves the right to change products at any time without being obliged to adjust earlier supplies accordingly.



Your product is designed and manufactured with high quality materials and components, which can be recycled and reused.



When this crossed-out wheeled bin symbol is attached to a product it means that the product is covered by the European Directive 2002/96/EC. Please inform yourself about the local separate collection system for electrical and electronic products. Please act according to your local rules and do not dispose of your old products with your normal household waste. Correct disposal of your old product helps to prevent potential negative consequences for the environment and human health.



Your product contains batteries covered by the European Directive 2006/66/EC, which cannot be disposed with normal household waste. Please inform yourself about the local rules on separate collection of batteries because correct disposal helps to prevent negative consequences for the environmental and human health.

##### Environmental information

All unnecessary packaging has been omitted. We have tried to make the packaging easy to separate into three materials: cardboard (box), polystyrene foam (buffer) and polyethylene (bags, protective foam sheet).

Your system consists of materials which can be recycled and reused if disassembled by a specialized company. Please observe the local regulations regarding the disposal of packaging materials, exhausted batteries and old equipment.

Philips and the Philips' Shield Emblem are registered trademarks of Koninklijke Philips N.V. and are used by WOOX Innovations Limited under license from Koninklijke Philips N.V.



"Made for iPod," "Made for iPhone," and "Made for iPad" mean that an electronic accessory has been designed to connect specifically to iPod, iPhone, or iPad, respectively, and has been certified by the developer to meet Apple performance standards. Apple is not responsible for the operation of this device or its compliance with safety and regulatory standards. Please note that the use of this accessory with iPod, iPhone, or iPad may affect wireless performance.

iPod and iPhone are trademarks of Apple Inc., registered in the U.S. and other countries. iPad is a trademark of Apple Inc.

##### Class II equipment symbol:



CLASS II apparatus with double insulation, and no protective earth provided.

#### Note

- The type plate is located on the bottom of the unit.

## 2 Product information

#### Note

- Product information is subject to change without prior notice.

### Specifications

#### Amplifier

Total output power 2 x 3W RMS

Frequency Response	80Hz-16kHz ±3dB
Signal to Noise Ratio	≥ 67dB
Aux Input (Audio in)	600mV RMS 22kohm

#### FM

Tuning Range	FM 87.5 - 108 MHz
Tuning grid	50 KHz
- Mono, 26dB S/N Ratio	<22 dBf
- Stereo, 46dB S/N Ratio	<43 dBf
Search Sensitivity	<28 dBf
Total Harmonic Distortion	<2%
Signal to Noise Ratio	>50 dB

#### Speakers

Speaker Impedance	4 ohm
Speaker Driver	58mm full range
Sensitivity	83dB/1m/1W

#### General information

AC power	220-240V/50/60Hz
Operation Power Consumption	30 W
Standby Power Consumption (clock display)	<1 W
Dimensions	260 x 137 x 185 mm
- Main Unit (W x H x D)	
Weight (Main unit, without packing)	1,13 kg