

Kitchen CD Clock Radio

AJ6110
AJ6111

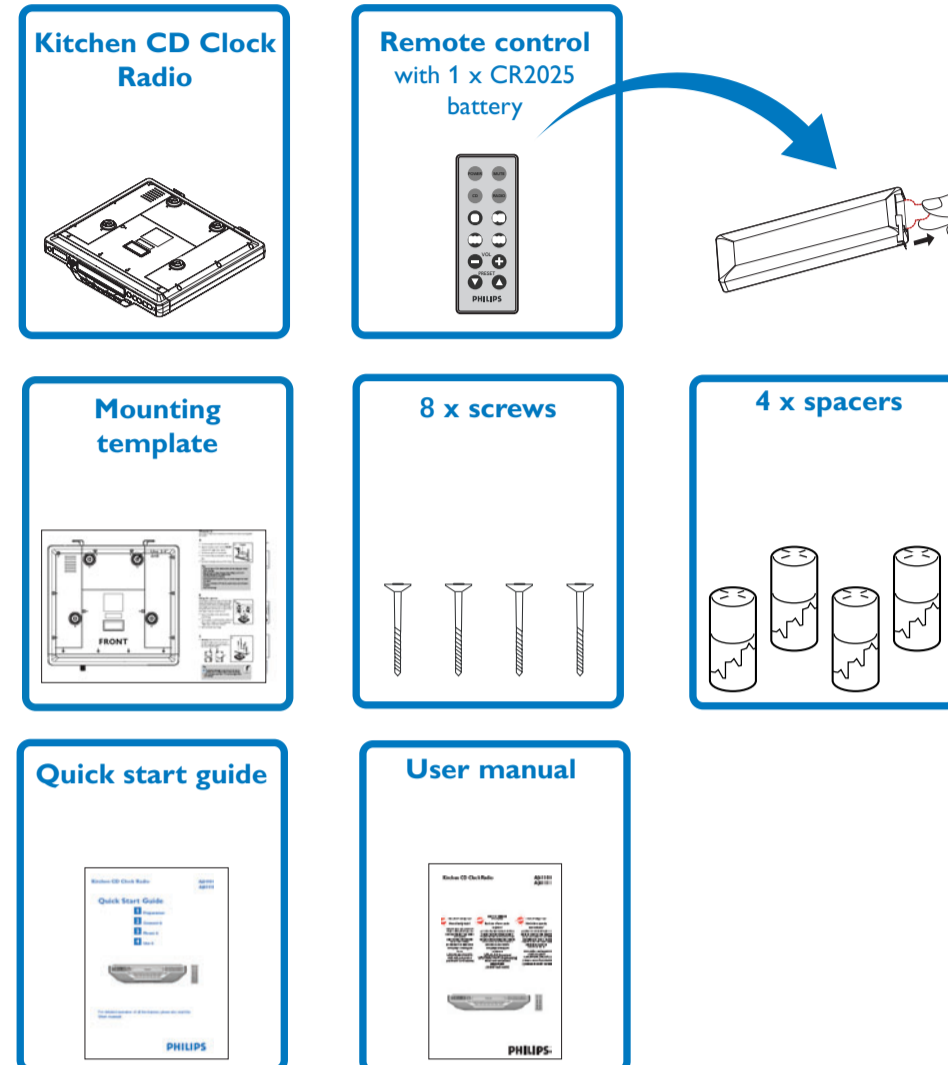
Quick Start Guide

- 1** Preparation
- 2** Connect it
- 3** Mount it
- 4** Use it



For detailed operation of all the features, please also read the **User manual**.

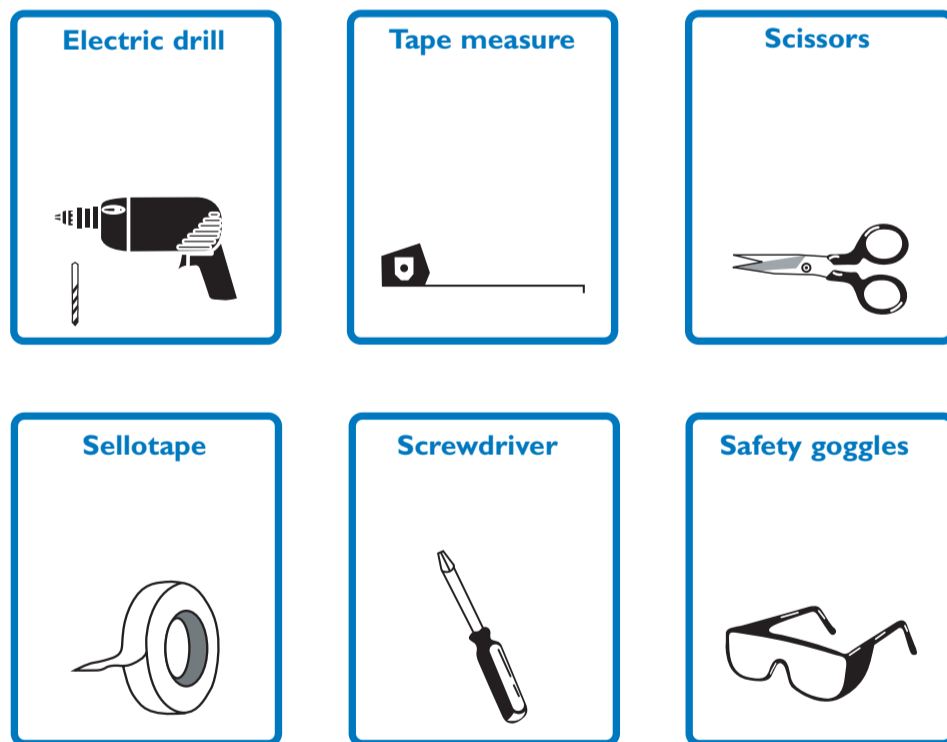
What's in the box



PHILIPS

What else you'll need

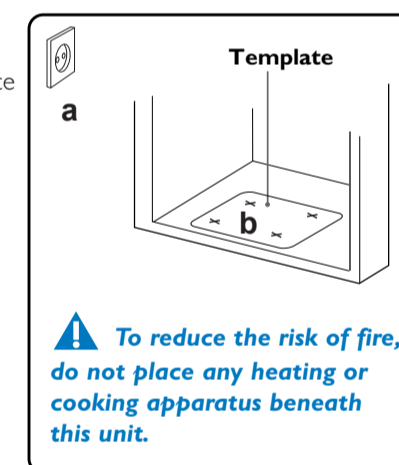
These tools (not included) will help you mount the unit as described in part 3 Mount it, and on the template.



1 Preparation

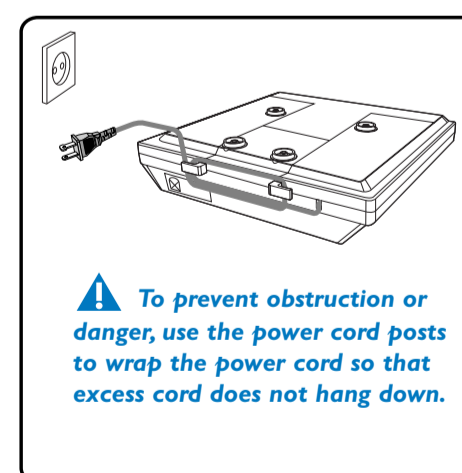
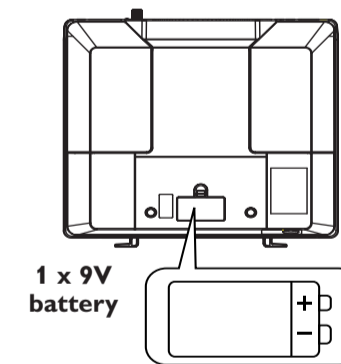
For best performance, install the unit as far as possible from sources of noise and interference (e.g. fridges, microwaves, fluorescent lamps)

- a Find a mounting location near a wall outlet.
- b Use the mounting template to test the design and thickness your kitchen cabinet bottom.
- c **Before you decide where and how to place your unit, try the following connections.** (See **2** below)



2 Connect it

- a **For memory back-up power supply**, insert 1 x 9V battery (preferably alkaline, not supplied) with the correct polarity.
- b Connect the AC power cord to the wall socket.
- c **For AM**, the set is provided with a built-in antenna. Follow the steps under **1 D**. Direct the antenna by adjusting the position of your unit.



Tip
We recommend you insert a 9V battery for memory back-up power supply. In the event of a power interruption, this will help safeguard the clock, timer settings and preset radio stations. To save energy, the display switches off and you will not be able to operate the CD/Tuner functions.



2006 © Koninklijke Philips Electronics N.V. All rights reserved.
PHILIPS CONSUMER ELECTRONICS NORTH AMERICA P.O. Box
671539, Marietta, GA. 30006-0026

<http://www.philips.com>

AL-0614



