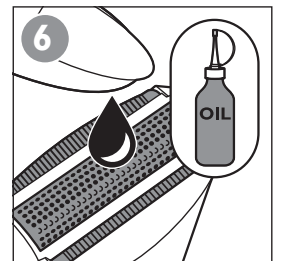
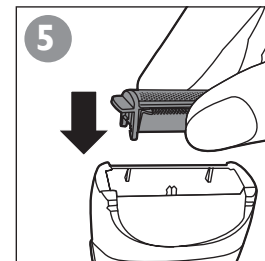
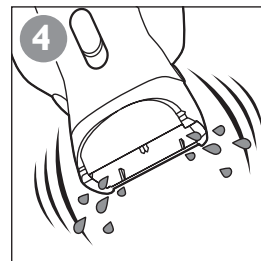
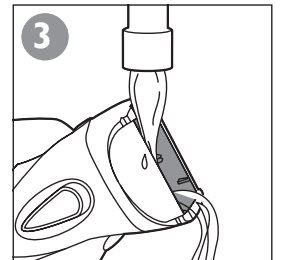
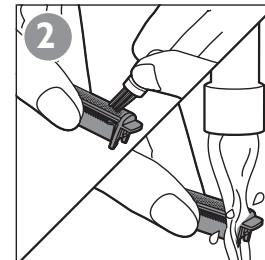
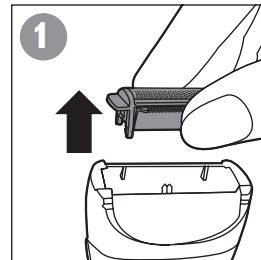
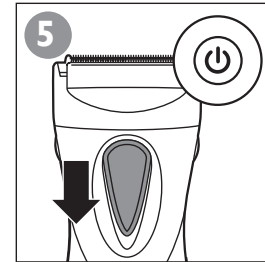
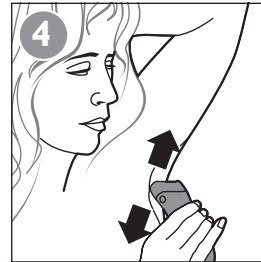
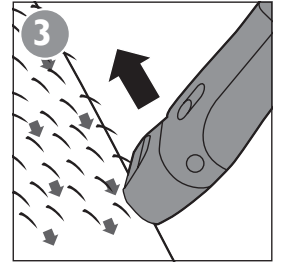
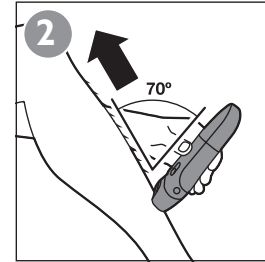
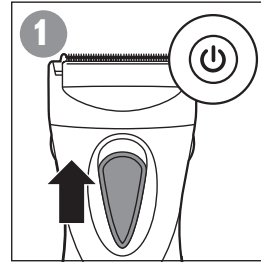
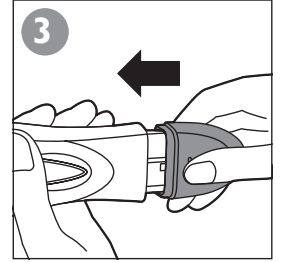
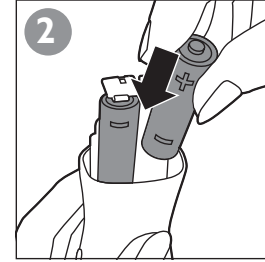
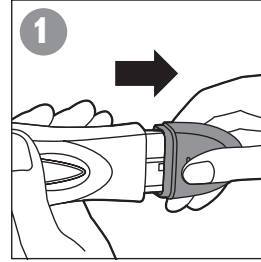


**PHILIPS**



Quick Start Guide / 快速指南

HP6306/01, HP6306/00



**Introduction**

Congratulations on your purchase and welcome to Philips! To fully benefit from the support that Philips offers, register your product at [www.philips.com/welcome](http://www.philips.com/welcome).

This Ladyshave can only be operated on batteries.

**Important**

Read this user manual carefully before you use the appliance and save it for future reference.

**Warning**

- This appliance can be used by children aged from 8 years and above and persons with reduced physical, sensory or mental capabilities or lack of experience and knowledge if they have been given supervision or instruction concerning use of the appliance in a safe way and understand the hazards involved. Children shall not play with the appliance. Cleaning and user maintenance shall not be made by children without supervision.
- Keep the appliance and its cord out of the reach of children.

**Caution**

- Make sure your hands and the appliance are dry when you insert the batteries.
- Use and store the appliance at a temperature between 15°C and 35°C.
- Do not use the appliance if it is damaged or broken, as this may cause injury.
- Never use any accessories or parts from other manufacturers or that Philips does not specifically recommend. If

you use such accessories or parts, your guarantee becomes invalid.

- This appliance is only intended to be used by women to shave their body hair. It is not intended for shaving or trimming scalp hair or for any other purpose.

**Compliance with standards**

- The appliance complies with the internationally approved IEC safety regulations and can be safely used in the bath or shower. (Fig. 1)
- This Philips appliance complies with all applicable standards and regulations regarding exposure to electromagnetic fields.

**Ordering accessories**

The shaving unit, the cover of the battery compartment and cleaning brush can be replaced. If you use the Ladyshave more than once a week, we advise you to replace the shaving unit after one or two years or when it is damaged. To buy accessories or spare parts, contact the Philips Consumer Care Centre in your country (see the worldwide guarantee leaflet for contact details).

**Environment**

- This symbol on a product means that the product is covered by European Directive 2012/19/EU (Fig. 2).
- This symbol means that the product contains batteries covered by European Directive 2006/66/EC which cannot be disposed of with normal household waste (Fig. 3).
- Inform yourself about the local separate collection system for electrical and electronic products and batteries. Follow local rules and never dispose of the product and batteries with normal household waste. Correct disposal of old products and batteries helps prevent negative consequences for the environment and human health.

**Guarantee and support**

If you need information or support, please visit [www.philips.com/support](http://www.philips.com/support) or read the separate worldwide guarantee leaflet.

**Troubleshooting**

This chapter summarises the most common problems you could encounter with the appliance. If you are unable to solve the problem with the information below, visit [www.philips.com/support](http://www.philips.com/support) for a list of frequently asked questions or contact the Consumer Care Centre in your country.

Problem	Possible cause	Solution
The appliance is not performing as well as it should.	The shaving unit is dirty.	Remove the shaving unit and clean it under the tap or with the cleaning brush. Remove any hairs that might be stuck under the trimmer.
	You put the appliance on the skin at a wrong angle.	Make sure that you put the appliance on the skin at an angle of 70° (see chapter 'Using the appliance', section 'Shaving').
The appliance operates too slowly (and produces an odd sound).	The batteries are nearly empty.	Replace the batteries.
	The shaving unit is dirty.	Clean the shaving unit.
	The shaving unit needs to be lubricated.	Lubricate the shaving unit with a few drops of sewing machine oil.
More skin irritation than usual.	The shaving foil is damaged or worn.	Replace the shaving unit.

Problem	Possible cause	Solution
The appliance does not work.	The batteries are empty.	Replace the batteries.
	You have not placed the batteries in the battery compartment correctly.	Put the batteries in the compartment in accordance with the + and - indications in the compartment.
	You have not attached the battery compartment cover properly.	Push the battery compartment cover onto the appliance ('click').
The appliance fell into the water while the battery compartment was open.		Let the appliance dry. Do not reattach the battery compartment cover until the inside of the appliance is completely dry.

## 简介

感谢您的惠顾，欢迎光临飞利浦！  
为了您能充分享受飞利浦提供的支持，请在 [www.philips.com/welcome](http://www.philips.com/welcome) 上注册您的产品。  
此款 Ladyshave 干湿美容剃毛器只能用电池供电。

## 注意事项

使用本产品之前，请仔细阅读本使用说明书，并妥善保管以备日后参考。

## 警告

- 产品不建议由有肢体、感官或精神能力缺陷或缺乏使用经验和知识的人（包括儿童）使用，除非有负责他们安全的人对他们进行与产品使用有关的监督或指导。
- 将产品及其线缆放在儿童接触不到的地方。

## 警告

- 确保您在安装电池时双手和产品都是干的。
- 必须在 15 摄氏度至 35 摄氏度之间的温度下使用和存放本产品。
- 一旦产品损坏或损毁，请勿再使用产品，否则可能对人体造成伤害。
- 切勿使用其它制造商生产的或未经飞利浦特别推荐的附件或部件。如果您使用了此类附件或部件，则本产品的保修将会失效。
- 本产品仅供女士剃除体毛使用。不得用于剃剪头发或其他用途。

## 符合标准

- 此产品符合国际认可的 IEC 安全规范，可在淋浴或盆浴过程中安全使用。符号图1注释：适合于在洗澡或淋浴时使用。允许在盛水的浴缸、淋浴、洗脸盆或其他器皿附近使用本器具。
- 符号注释：适合于在洗澡或淋浴时使用。允许在盛水的浴缸、淋浴、洗脸盆或其他器皿附近使用本器具。
- 本飞利浦产品符合所有有关暴露于电磁场的适用标准和法规。

## 订购附件

剃毛刀头部件、电池仓盖和清洁刷均可更换。如果您每周使用 Ladyshave 干湿美容剃毛器不只一次，建议您一到两年更换一次剃毛刀头部件，或在其损坏时进行更换。  
要购买附件或零配件，请联系您所在国家/地区的飞利浦客户服务中心（联系详情，请参阅全球保修卡）。

## 环保

- 产品上的该符号表示产品符合欧盟指令 2012/19/EU。(图 2)
- 此符号表示产品包含符合欧洲指令 2006/66/EC 的电池，该电池不能与一般的生活垃圾一同弃置。(图 3)
- 请熟悉当地针对电子、电器产品及电池制订的分门别类的收集机制。遵循当地规章制度，不要将产品和电池与一般的生活垃圾一同弃置。正确弃置旧产品和电池有助于避免对环境和人类健康造成负面影响。

## 保修和支持

如果您需要信息或支持，请访问 [www.philips.com/support](http://www.philips.com/support) 或阅读单独的全球保修卡。

## 故障种类和处理方法

本章归纳了使用本产品时最常见的一些问题。如果您无法根据以下信息解决问题，请访问 [www.philips.com/support](http://www.philips.com/support) 查阅常见问题列表，或联系您所在国家/地区的客户服务中心。

问题	可能的原因	解决方法
产品无法正常运转。	剃毛刀头部件脏了。	拆下剃毛刀头部件并在水龙头下或使用清洁刷进行清洁。清除可能卡住修剪器的毛发。
	您将产品以错误的角度放在了皮肤上。	确保产品放在皮肤上时，与皮肤呈 70° 角（见“使用产品”一章的“剃毛”部分）。
产品运转速度太慢（并发出奇怪的声音）。	电池电量几乎耗尽。	更换电池。
	剃毛刀头部件脏了。	清洁剃毛刀头部件。
	剃毛刀头部件需要润滑。	用少量缝纫机油润滑剃毛刀头部件。
皮肤过敏现象比平时严重。	剃毛刀网已损坏或磨损。	更换剃毛刀头附件。
产品不能工作。	电池已耗尽。	更换电池。
	您没有在电池仓中正确放置电池。	按照电池仓中的 + 和 - 指示将电池装到电池仓中。
	您没有正确安装电池仓盖。	将电池仓盖按到产品上（可听到“咔哒”一声）。
电池仓打开时，产品掉到水中。		晾干产品。在产品完全干燥之前，请勿重新安装电池仓盖。

# PHILIPS

产品 : 飞利浦干湿美容剃毛器  
型号 : HP6306  
额定电压 : 3 V ===  
额定输入功率: 1.5 W  
生产日期 : 请见产品本体  
产地 : 中国广东中山

飞利浦（中国）投资有限公司  
上海市天目西路218号1602-1605  
全国顾客服务热线: 4008 800 008

本产品根据国标 GB4706.1-2005, GB4706.9-2008 制造

保留备用

发行日期：2016/07/15

# 产品中有害物质的名称及含量

部件名称	有害物质					
	铅 (Pb)	汞 (Hg)	镉 (Cd)	六价铬 (Cr(VI))	多溴联苯 (PBB)	多溴二苯醚 (PBDE)
内部金属件	X	O	O	O	O	O

本表格依据 SJ/T 11364 的规定编制。

O: 表示该有害物质在该部件所有均质材料中的含量均在 GB/T 26572 规定的限量要求以下。

X: 表示该有害物质至少在该部件的某一均质材料中的含量超出 GB/T 26572 规定的限量要求。

