

Register your product and get support at  
[www.philips.com/welcome](http://www.philips.com/welcome)

# PhotoFrame

7FF2FPA



---

EN User manuals

1

**PHILIPS**



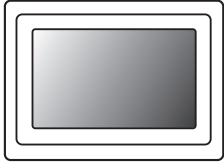
---

# Content

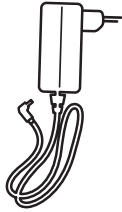
<b>1. What is in box</b>	<b>2</b>
<b>2. Connect</b>	<b>3</b>
2.1 Attach the Stand	3
2.2 Connect the power adaptor	3
<b>3. Setup</b>	<b>3</b>
3.1 Turn on the photo frame	3
3.2 Chose Language	4
<b>4. Enjoy</b>	<b>4</b>
4.1 View pre-stored photos	4
4.2 View photos from your memory card	5
4.3 Copy or copy all photos from your memory card	5
4.4 Delete or Delete all photos from your memory card	6
4.5 Copy/ Delete photos by connecting to your computer	6
4.6 Set Time and Date functions	7
4.7 Set Auto on/off timer functions	7
<b>5. Frequently asked questions</b>	<b>8</b>
<b>6. Service and Warranty</b>	<b>9</b>

---

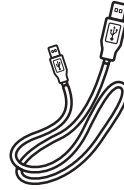
# 1. What is in box



Digital PhotoFrame



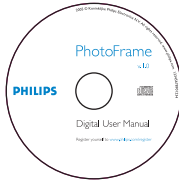
Power adaptor



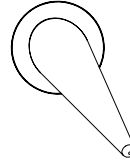
USB Cable to PC  
(male B type plug)



Quick start guide



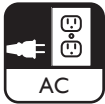
User manual CD



Frame Stand

---

## What else you'll need



Power outlet

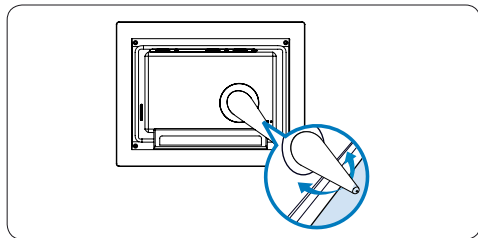


Digital Photos on memory card or PC

## 2. Connect

### 2.1 Attach the Stand

- Place the head of the stand in the socket.
- Rotate counterclockwise until the stand clicks into place.

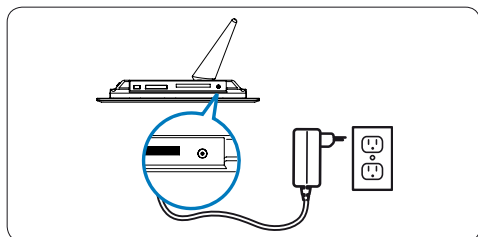


#### ⚠ Caution:

To help prevent damage, do not hold the frame by the stand. Grasp the frame firmly using two hands.

### 2.2 Connect the power adaptor

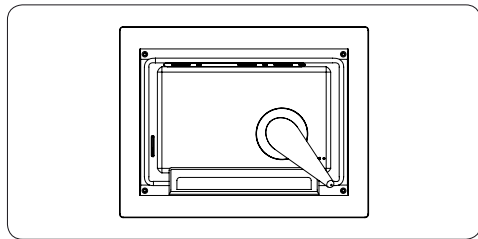
- Connect the supplied power adaptor to the photo frame and then plug it to a power outlet.



## 3. Setup

### Locate the control keys

Control keys on the back of the frame and corresponding function icons on the front of the LCD display enable you to maneuver through the menus and customize your settings.



- |                  |               |                    |
|------------------|---------------|--------------------|
| ← Back/Left      | ↑ Up          | ✓ Enter            |
| → Next/Right     | ↓ Down        | 🏠 Main menu        |
| ✓ Slide mode     | ⏮ Browse mode | 🖼 Thumbnail mode   |
| ℹ Show/Hide menu | 📷 Photo menu  | 🗑 Add/Cancel photo |
| ↶ Return         | ⌚ Clock       |                    |

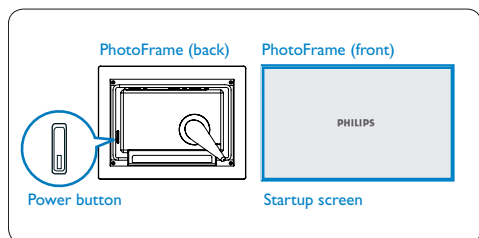


#### Note:

Not all of the icons will appear on the screen at the same time.

### 3.1 Turn on the photo frame

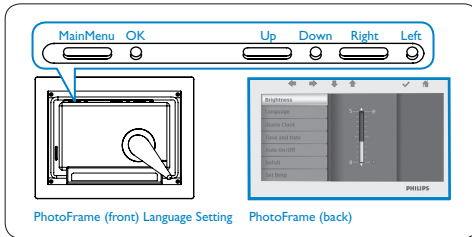
- Push the power button on the back of the frame for approximately 2seconds.



## 3.2 Choose language

Menu buttons are on the back of the photo frame. Icons indicate location of buttons found on the back of the panel.

- Press **↑** , **↓** keys to select **SETTINGS**. Press **✓** key to enter.
- Press **↑** , **↓** keys to select **Language** settings. Press **✓** key to enter.
- Press **↑** , **↓** keys to select. Press **✓** key to set your language.
- Use **⏪** key to return and exit **SETTINGS**.



## 4. Enjoy

### 4.1 View pre-stored photos

There are 3 view modes to choose from:

**Browse Mode:** manual viewing of photos one by one.



**Thumbnail Mode:** list of all photos.

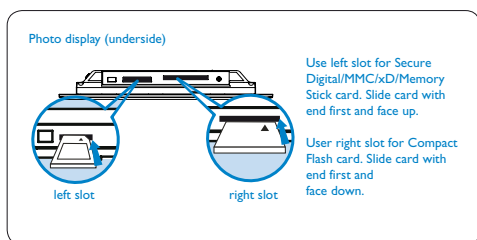


**Slide Mode:** automatic, rotating display of photos.



- Press **↑** , **↓** keys to select **PHOTO**. Press **✓** key to enter.
- Press **↑** , **↓** keys to select **Internal Memory**. Press **✓** key to enter.
- Press **↑** , **↓** keys to select **Album**. Press **✓** key to enter **Thumbnail Mode**, and press **▶** key to enter **Slide Mode**, press **||** key to enter **Browse Mode**.
- You may also enter **Slide Mode** directly by pressing **||** key from the main menu.

## 4.2 View photos from your memory card



- Press **↑** , **↓** keys to select **PHOTO**. Press **✓** key to enter.
- Press **↑** , **↓** keys to select inserted memory card. Press **✓** key to enter.
- Press **↑** , **↓** keys to select **Album**. Press **✓** key to enter **Thumbnail Mode**. After a few seconds, photos in your memory card will appear.
- Then press **▶** key to enter **Slide Mode**, press **||** key to enter **Browse Mode**.

If the memory card is inserted before the power is ON, Slideshow will automatically start.

## 4.3 Copy or copy all photos from your memory card

### Copying photo mode

- 1 In the thumbnail mode, use **←** , **→** keys to select photo.
  - Press **☒** key to add/cancel selected photos. After selecting, press **||** key to show photo menu.



- 2 Press **↑** , **↓** keys to select **Copy to** or **Copy all to your memory card**.



- 3 Press **✓** key to copy.

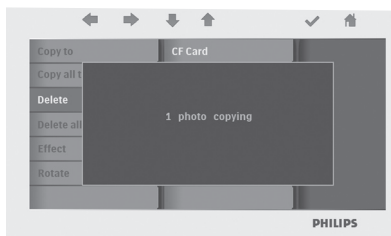




Photo frame will keep a resized copy of the photo until it's internal memory is full (message shown).

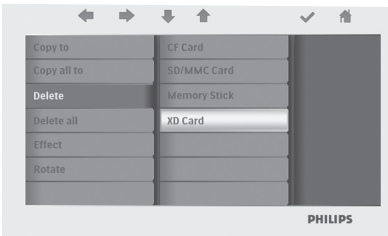
#### 4.4 Delete or Delete all photos from your memory card

##### Deleting photo mode

- 1 • In the thumbnail mode, use ← , → keys to select photo.  
• Press  key to add/cancel selected photos. After selecting, press  key to show photo menu.



- 2 Press ↑ , ↓ keys to select **Delete** or **Delete all** from your memory card.

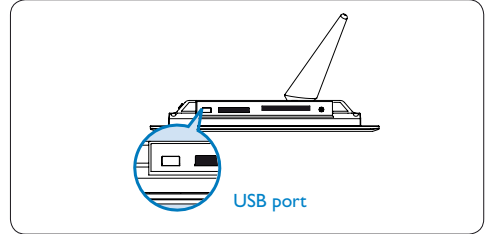


- 3 Press  key to delete.



#### 4.5 Copy/ Delete photos by connecting to your computer

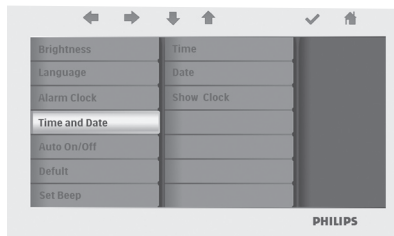
You may copy, delete and move photos by connecting the photo framewith the computer through the provided USB cable.



- Turn on the power of the photo frame, and then plug the smaller end of the USB cable into the USB port on the underside of the photo frame.
- Plug the other end of the USB cable into the USB port of the computer.



## 4.6 Set Time and Date functions



### Set Time functions

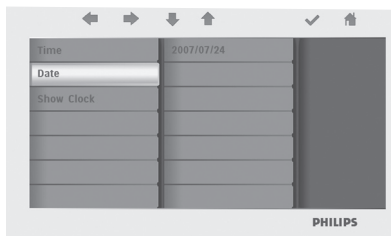
- Press **↑** , **↓** keys to select **SETTINGS**. Press **✓** key to enter.
- Press **↑** , **↓** keys to select **Time and Date**. Press **✓** key to enter.
- Press **↑** , **↓** keys to select **Time** to setup. Press **✓** key to set hour and minutes.



Press **⏠** key to return main menu and exit **SETTINGS**.

### Set Date functions

- Press **↑** , **↓** keys to select **SETTINGS**. Press **✓** key to enter.
- Press **↑** , **↓** keys to select **Time and Date**. Press **✓** key to enter.
- Press **↑** , **↓** keys to select **Date** to setup. Press **✓** key to set year, month and day.



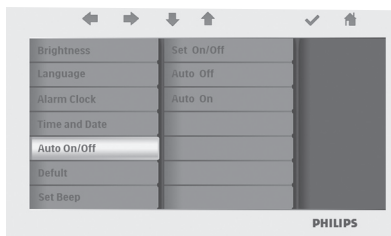
Press **⏠** key to return main menu and exit **SETTINGS**.

**⚠ Caution:**  
Time and date settings are erased if the photo frame is unplugged.

## 4.7 Set Auto on/off timer functions

Photo display can be enabled to turn on and off at pre-set times daily.

- 1 • Press **↑** , **↓** keys to select **SETTINGS**. Press **✓** key to enter.
- Press **↑** , **↓** keys to select **Auto On/Off**. Press **✓** key to enter.



- 2 Press **↑** , **↓** keys to select **Set On/Off** to switch. Press **✓** key to set **On** or **Off**, and then press enter.



- 3 Press **↑** , **↓** keys to set auto on or auto off time.



Press **⏪** key to return main menu and exit SETTINGS.

**!** **Caution:**

Auto on/off settings are erased if the photo frame is unplugged.

---

## 5. Frequently Asked Questions

### Is the LCD screen touch-enabled?

The LCD screen is not touch-enabled. Use the keys in the back of the frame to control digital photo display.

### After copying photos, how can I check to see if the photos are already stored inside?

The photos are copied after the screen confirms with “Finished” message. You may review them in the internal memory.

### Can I switch between different photo slideshows by using different memory cards?

Yes, photo frame will show the slideshow photos in the card currently connected.

### Can I use photo frame to delete photos on memory card?

Yes, it supports operations to delete photos on external devices.

### Can I print photos from Digital photo display?

No, it does not support direct photo printing.

### Need help?

support web site

Online help: [www.philips.com/welcome](http://www.philips.com/welcome)

## 6. Service and Warranty

### Recycling Information for Customers

Philips establishes technically and economically viable objectives to optimize the environmental performance of the organization's product, service and activities.

From the planning, design and production stages, Philips emphasizes the importance of making products that can easily be recycled. At Philips, end-of-life management primarily entails participation in national take-back initiatives and recycling programs whenever possible, preferably in cooperation with competitors.

There is currently a system of recycling up and running in the European countries, such as The Netherlands, Belgium, Norway, Sweden and Denmark.

In U.S.A., Philips Consumer Electronics North America has contributed funds for the Electronic Industries Alliance (EIA) Electronics Recycling Project and state recycling initiatives for end-of-life electronics products from household sources. In addition, the Northeast Recycling Council (NERC) - a multi-state non-profit organization focused on promoting recycling market development - plans to implement a recycling program.

In Asia Pacific, Taiwan, the products can be taken back by Environment Protection Administration (EPA) to follow the IT product recycling management process, detail can be found in web site [www.epa.gov.tw](http://www.epa.gov.tw)

For help and service, please read the section of Service and Warranty or the following team of Environmental specialist can help.

Mr. Job Chiu - Environment manager  
Philips Electronics Industries (Taiwan) Ltd,  
Monitor Business Unit

E-mail: [job.chiu@philips.com](mailto:job.chiu@philips.com)

Tel: +886 (0) 3 454 9839

Mr. Maarten ten Houten - Senior Environmental Consultant

Philips Consumer Electronics

E-mail: [marten.ten.houten@philips.com](mailto:marten.ten.houten@philips.com)

Tel: +31 (0) 40 27 33402

Ms. Delmer F. Teglas

Philips Electronics North America

E-mail: [butch.teglas@philips.com](mailto:butch.teglas@philips.com)

Tel: +1 865 521 4322

### Banned Substance Declaration

This product complies with RoHs and Philips BSD (AR17-G04-5010-010) requirements

### CE Declaration of Conformity

Philips Consumer Electronics declare under our responsibility that the product is in conformity with the following standards

- EN60950:2000 (Safety requirement of Information Technology Equipment)
  - EN55022:1998 (Radio Disturbance requirement of Information Technology Equipment)
  - EN55024:1998 (Immunity requirement of Information Technology Equipment)
  - EN61000-3-2:2000 (Limits for Harmonic Current Emission)
  - EN61000-3-3:1995 (Limitation of Voltage Fluctuation and Flicker) following provisions of directives applicable
  - 73/23/EEC (Low Voltage Directive)
  - 89/336/EEC (EMC Directive)
  - 93/68/EEC (Amendment of EMC and Low Voltage Directive)
- and is produced by a manufacturing organization on ISO9000 level.

## Federal Communications Commission (FCC) Notice (U.S. Only)

### Note:

This equipment has been tested and found to comply with the limits for a Class B digital device, pursuant to Part 15 of the FCC Rules. These limits are designed to provide reasonable protection against harmful interference in a residential installation. This equipment generates, uses and can radiate radio frequency energy and, if not installed and used in accordance with the instructions, may cause harmful interference to radio communications. However, there is no guarantee that interference will not occur in a particular installation. If this equipment does cause harmful interference to radio or television reception, which can be determined by turning the equipment off and on, the user is encouraged to try to correct the interference by one or more of the following measures:

- Reorient or relocate the receiving antenna.
- Increase the separation between the equipment and receiver.
- Connect the equipment into an outlet on a circuit different from that to which the receiver is connected.
- Consult the dealer or an experienced radio/TV technician for help.

### Caution:

Changes or modifications not expressly approved by the party responsible for compliance could void the user's authority to operate the equipment.

Connections to this device must be made with shielded cables with metallic RFI/EMI connector hoods to maintain compliance with FCC Rules and Regulations.

To prevent damage which may result in fire or shock hazard, do not expose this appliance to rain or excessive moisture.

THIS CLASS B DIGITAL APPARATUS MEETS ALL REQUIREMENTS OF THE CANADIAN INTERFERENCE-CAUSING EQUIPMENT REGULATIONS.

## FCC Declaration of Conformity

Model Number: FF2  
Trade Name: Philips  
Responsible Party: Philips Consumer Electronics North America  
P.O. Box 671539  
Marietta, GA 30006-0026  
1-888-PHILIPS (744-5477)

## Declaration of Conformity for Products Marked with FCC Logo, United States Only

Trade Name Model Number



Tested To Comply  
With FCC Standards

FOR HOME OR OFFICE USE

This device complies with Part 15 of the FCC Rules. Operation is subject to the following two conditions: (1) this device may not cause harmful interference, and (2) this device must accept any interference received, including interference that may cause undesired operation.

## Commission Federale de la Communication (FCC Declaration)

### Note:

Cet équipement a été testé et déclaré conforme aux limites des appareils numériques de class B, aux termes de l'article 15 Des règles de la FCC. Ces limites sont conçues de façon à fournir une protection raisonnable contre les interférences nuisibles dans le cadre d'une installation résidentielle. CET appareil produit, utilise et peut émettre des hyperfréquences qui, si l'appareil n'est pas installé et utilisé selon

les consignes données, peuvent causer des interférences nuisibles aux communications radio. Cependant, rien ne peut garantir l'absence d'interférences dans le cadre d'une installation particulière. Si cet appareil est la cause d'interférences nuisibles pour la réception des signaux de radio ou de télévision, ce qui peut être décelé en fermant l'équipement, puis en le remettant en fonction, l'utilisateur pourrait essayer de corriger la situation en prenant les mesures suivantes:

- Réorienter ou déplacer l'antenne de réception.
- Augmenter la distance entre l'équipement et le récepteur.
- Brancher l'équipement sur un autre circuit que celui utilisé par le récepteur.
- Demander l'aide du marchand ou d'un technicien chevronné en radio/télévision.

#### ⚠ Caution:

Toutes modifications n'ayant pas reçu l'approbation des services compétents en matière de conformité est susceptible d'interdire à l'utilisateur l'usage du présent équipement.

Les raccordements à cet appareil doivent être réalisés avec des câbles blindés à protections métalliques pour les connecteurs RFI/EMI afin de maintenir la conformité avec les Règlements et la Législation du FCC.

CET APPAREIL NUMERIQUE DE LA CLASSE B RESPECTE TOUTES LES EXIGENCES DU REGLEMENT SUR LE MATERIEL BROUILLEUR DU CANADA.

## EN 55022 Compliance (Czech Republic Only)

This device belongs to category B devices as described in EN 55022, unless it is specifically stated that it is a Class A device on the specification label. The following applies to devices in Class A of EN 55022 (radius of protection up to 30 meters). The user of the device is obliged to take all steps necessary to remove sources of interference to telecommunication or other devices.

Pokud není na typovém štítku počítače uvedeno, že spadá do třídy A podle EN 55022, spadá automaticky do třídy B podle EN 55022. Pro zařízení zařazená do třídy A (chránné pásmo 30m) podle EN 55022 platí následující. Dojde-li k rušení telekomunikačních nebo jiných zařízení je uživatel povinen provést taková opatření, aby rušení odstranil.

## VCCI Notice (Japan Only)

This is a Class B product based on the standard of the Voluntary Control Council for Interference (VCCI) for Information technology equipment. If this equipment is used near a radio or television receiver in a domestic environment, it may cause radio Interference. Install and use the equipment according to the instruction manual.

Class B ITE



この装置は、情報処理装置等電波障害自主規制協議会 (VCCI) の基準に基づくクラス B 情報技術装置です。この装置は家庭環境で使用することを目的としていますが、この装置がラジオやテレビジョン受信機に近接して使用されると、受信障害を引き起こすことがあります。取扱説明書に従って正しい取り扱いをして下さい。

## Polish Center for Testing and Certification Notice

- The equipment should draw power from a socket with an attached protection circuit (a three-prong socket). All equipment that works together (computer, monitor, printer, and so on) should have the same power supply source.
- The phasing conductor of the room's electrical installation should have a reserve short-circuit protection device in the form of a fuse with a nominal value no larger than 16 amperes (A).



## **Waste Electronics and Electrical Equipment (WEEE)**

This product is labelled with this symbol in accordance with European Directive 2002/96/EG to indicate that it must not be disposed of with your other household waste. Please check your local city office or waste disposal service for the return and recycling of this product.

### **End of life directives - Recycling**

Your new TV contains several materials that can be recycled for new uses.

Like all LCD products, this set contains a lamp with Mercury, please dispose of according to all Local, State and Federal laws.

Votre nouveau téléviseur contient plusieurs matériaux qui peuvent être recyclés pour de nouvelles utilisations.

Comme tous les produits ACL, cette appareille contenant une petit quantité de mercure, SVP se débarrasser en accord avec les lois fédéral et gouvernemental.

