

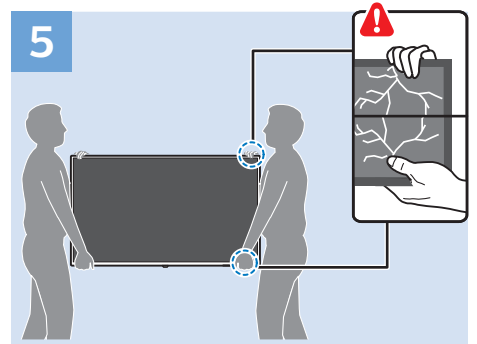
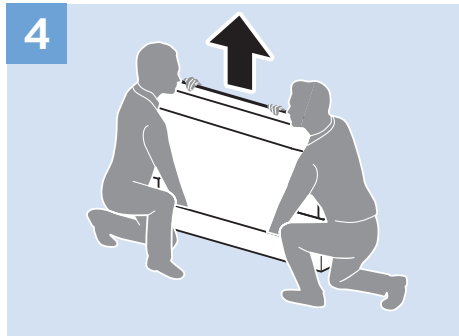
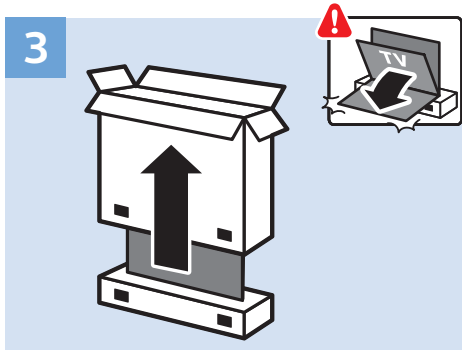
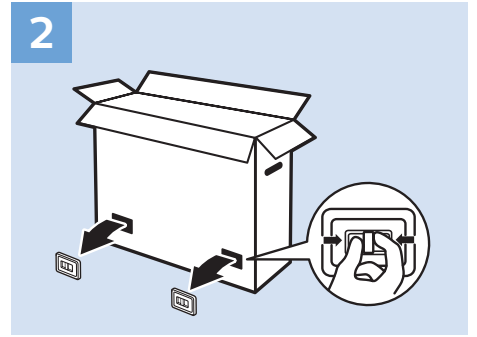
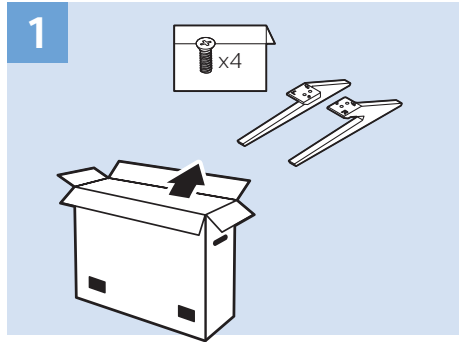
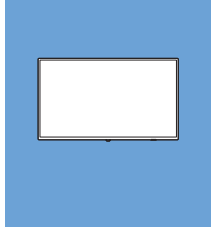
Register your product and get support at  
[www.philips.com/TVsupport](http://www.philips.com/TVsupport)

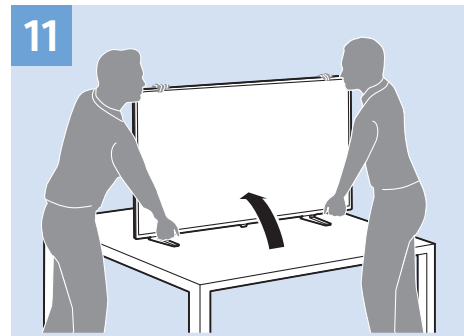
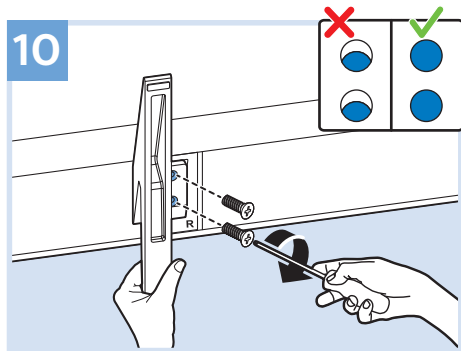
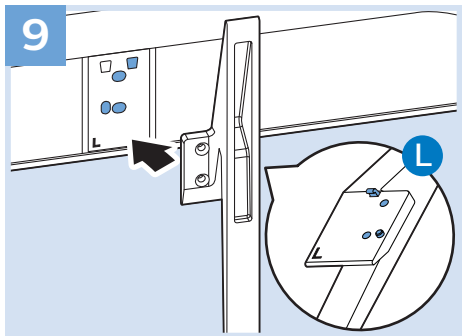
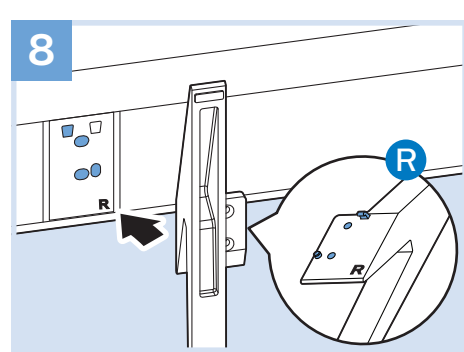
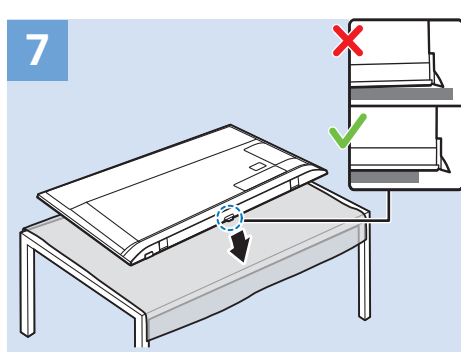
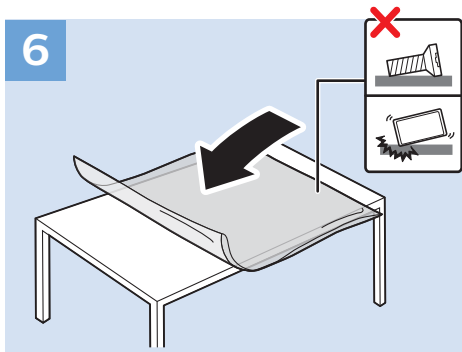
6703 series

**PHILIPS**

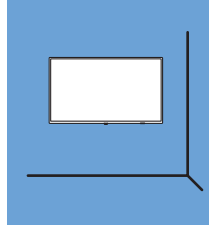
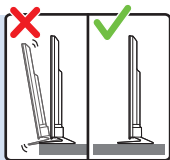
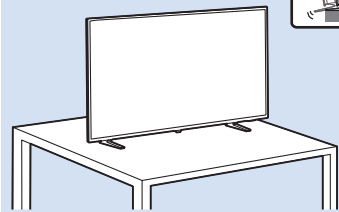


English - Read the safety instructions.



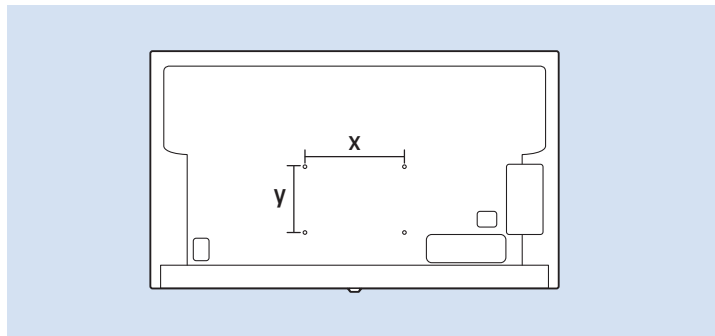


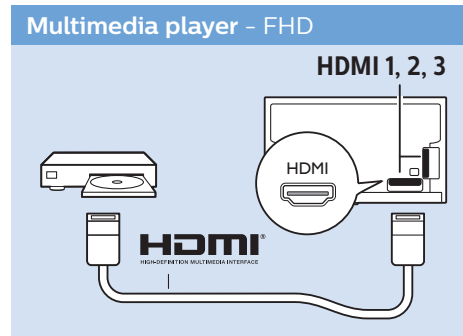
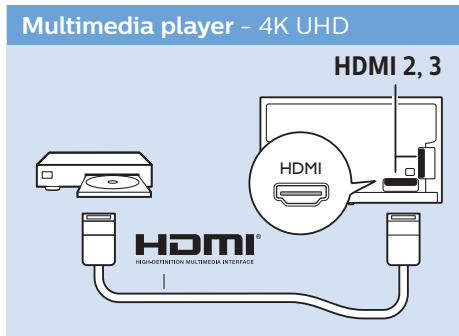
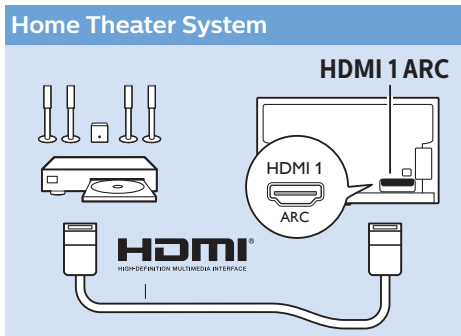
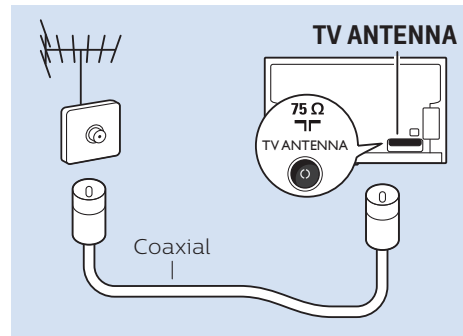
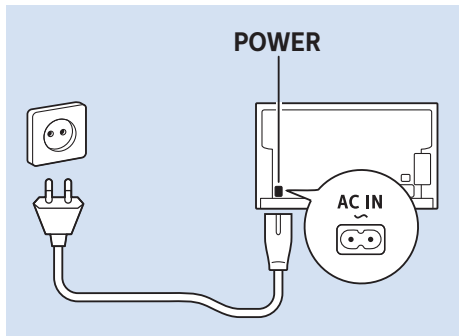
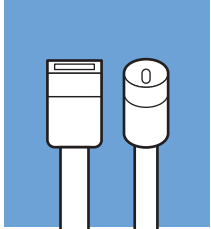
12



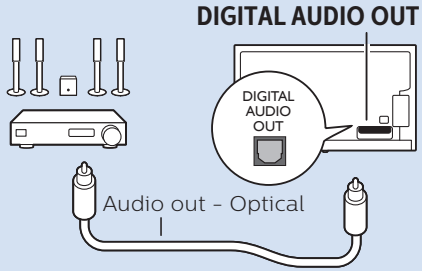
65"

VESA (x, y) 400x200 mm M6

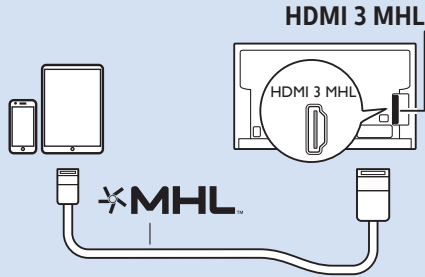




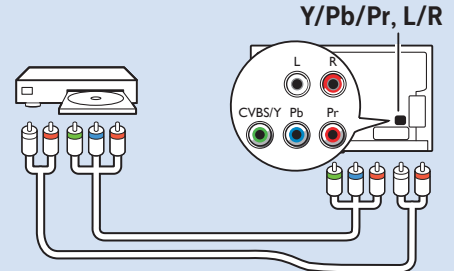
## Digital Audio System - OPTICAL



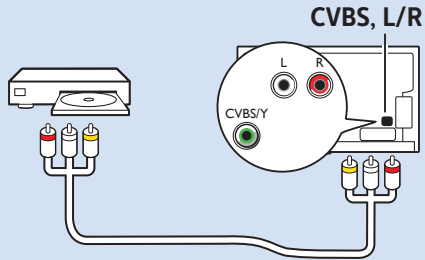
## MHL



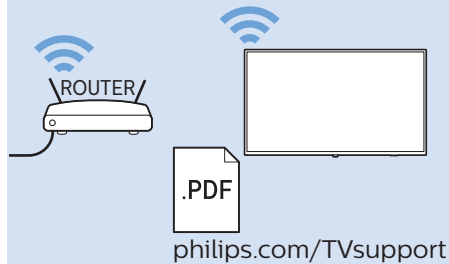
## Video Player - YPbPr, L/R



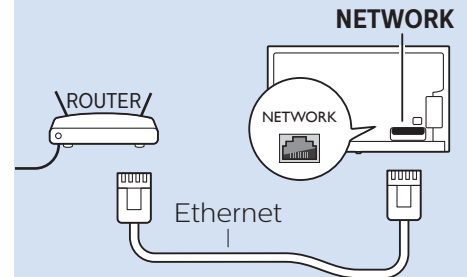
## Video Player - CVBS, L/R



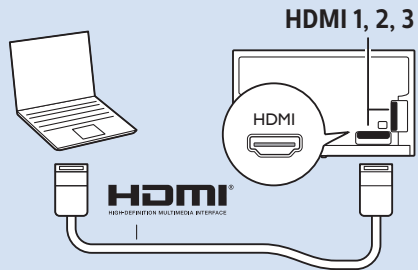
## Network - Wireless



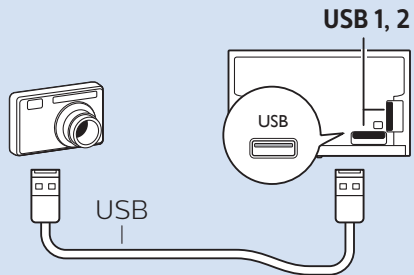
## Network - Wired



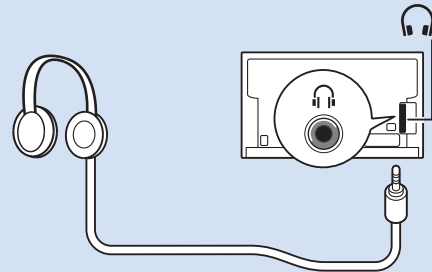
### Computer - HDMI



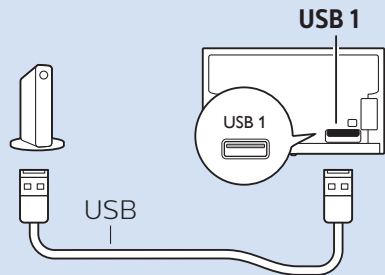
### Photo Camera



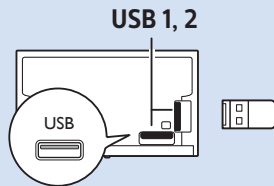
### Headphones



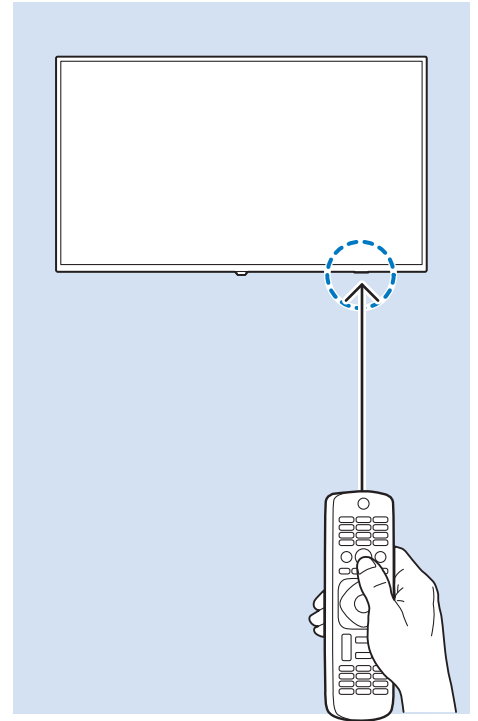
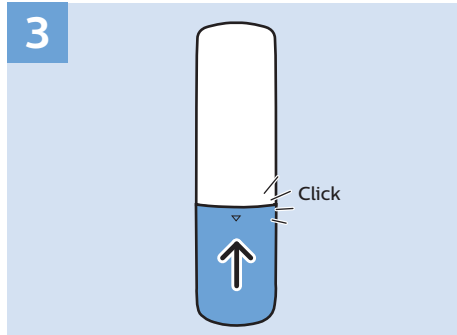
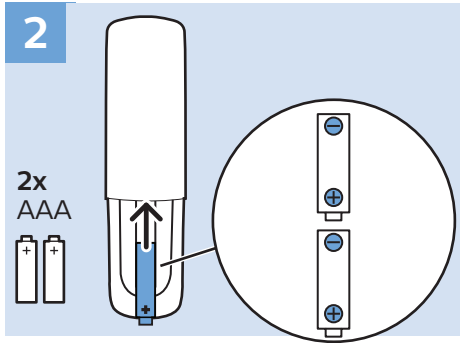
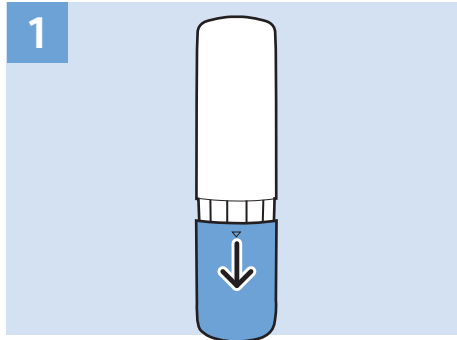
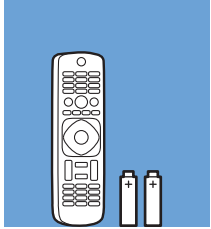
### USB Hard Drive

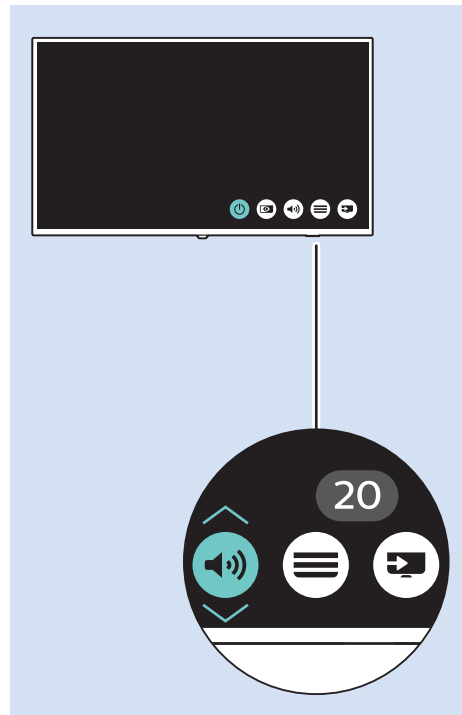
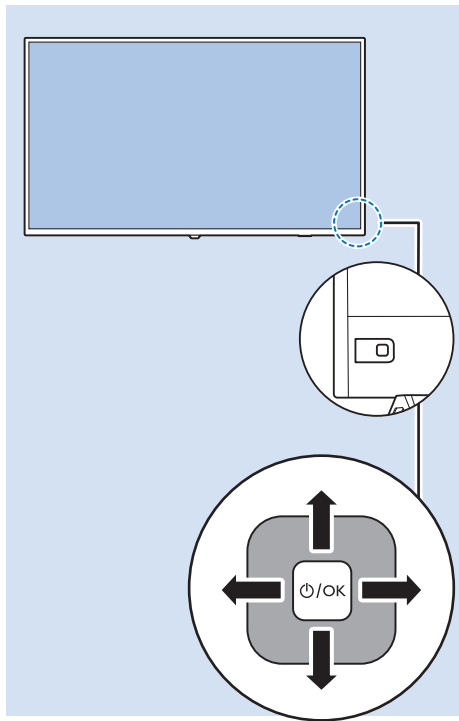
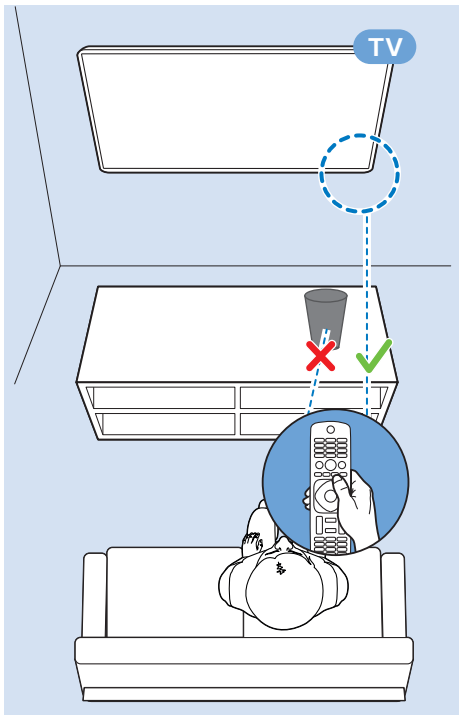


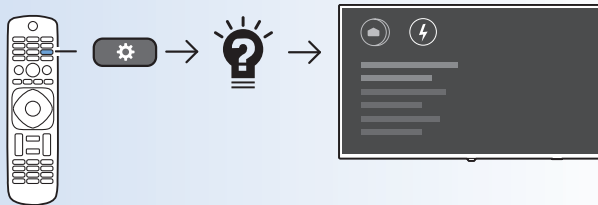
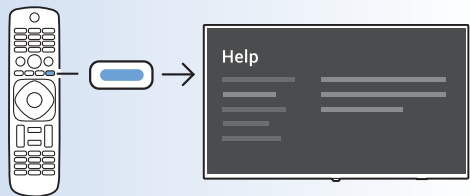
### USB Flash Drive











[www.philips.com/TVsupport](http://www.philips.com/TVsupport)



PHILIPS



All registered and unregistered trademarks are property of their respective owners.  
Specifications are subject to change without notice.  
Philips and the Philips' shield emblem are trademarks of Koninklijke Philips N.V.  
and are used under license from Koninklijke Philips N.V.  
2018 © TP Vision Europe B.V. All rights reserved.

[philips.com](https://www.philips.com)