



Philips 9000 series
4K UHD Android TV -
Bowers&Wilkins Sound
with Ambilight 3-sided

P5 Perfect Picture Engine
Sound by Bowers & Wilkins
Ambilight 3-sided
139 cm (55") Android TV



55PUS9435

Elegant looks. Cinematic sound.

4K UHD LED Android TV with Ambilight

See every detail. Hear every nuance. This Philips LED TV with built-in up-firing Bowers & Wilkins speakers envelops you in a lifelike picture and immersive audio. Ambilight adds color to the music, HDR streaming series, and movies you love.

Immersive light. Immersive audio.

- Bright 4K LED TV. Vibrant HDR picture. Smooth motion.
- Ambilight. Take the emotion beyond the screen.
- Immersive sound. Bowers & Wilkins meets Dolby Atmos.
- Kvadrat speaker cloth. Muirhead leather-backed remote.

Incredible picture. Bowers & Wilkins sound.

- Philips P5 Engine. Whatever the source, always perfection.
- Dolby Vision and Dolby Atmos. Cinematic vision and sound.
- Major HDR formats. See more of what the director intended.
- 2.1.2 sound system. Up-firing speakers for Dolby Atmos.
- Integrated sub-woofer, tweeters, and midrange drivers.

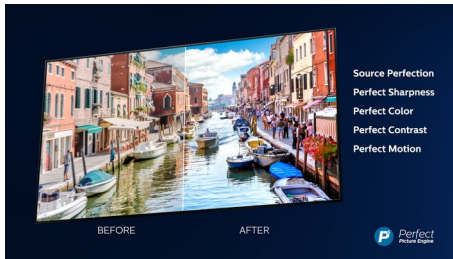
Android TV-content at your command

- Android TV. Simply smart.
- Voice control. Google Assistant built-in. Works with Alexa.
- DTS Play-Fi. Multi-room audio.

PHILIPS

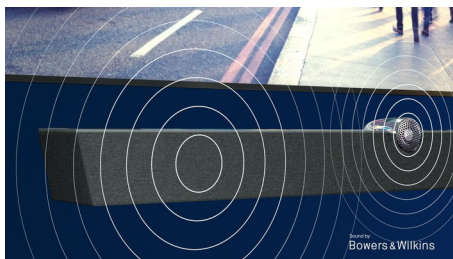
Highlights

P5 Perfect Picture Engine



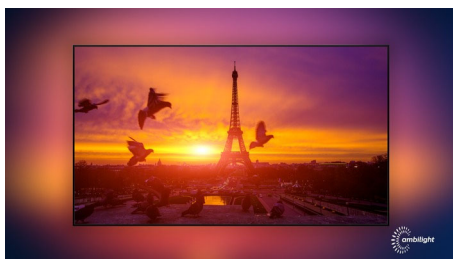
The Philips P5 engine delivers a picture as brilliant as the content you love. Details have noticeably more depth. Colors are vivid, while skin tones look natural. Contrast is so crisp you'll feel every detail. Motion is perfectly smooth.

Bowers & Wilkins sound



An exclusive speaker design by legendary audio engineers Bowers & Wilkins delivers thrillingly lifelike performance. Up-firing speakers let you get the most out of Dolby Atmos. A central tweeter keeps the dialogue pristine no matter how intense the drama gets.

Ambilight 3-sided



With Philips Ambilight, movies and games feel more immersive. Music gets a light show. And

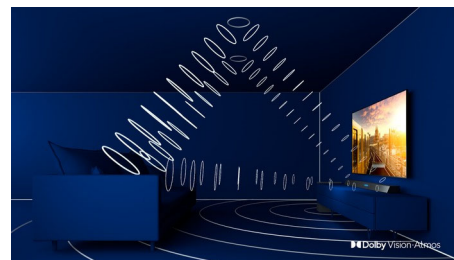
your screen will feel bigger than it is. Intelligent LEDs around the edges of the TV cast on-screen colours onto the walls, and into the room, in real time. You get perfectly tuned ambient lighting. And one more reason to love your TV.

4K UHD



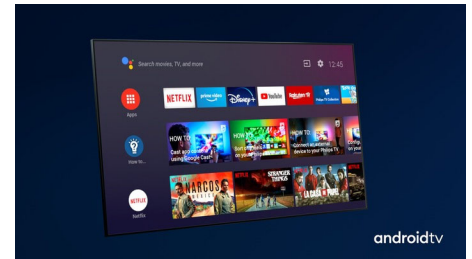
Bright 4K LED TV. Vibrant HDR picture. Smooth motion. A Philips 4K UHD TV brings content to life with rich colors and crisp contrast. Images have more depth, and motion is smooth. Movies, shows, games, and more look great no matter the source.

Dolby Vision and Dolby Atmos



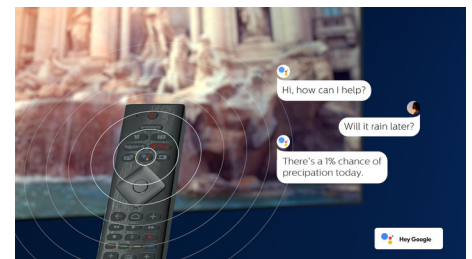
Support for Dolby's premium sound and video formats means the HDR content you watch will look-and sound-gloriously real. Whether it's the latest streaming series or a Blu-Ray disc set, you'll enjoy contrast, brightness, and color that reflect the director's original intentions. And hear spacious sound with clarity, detail, and depth.

Android TV



Your Philips Android TV gives you the content you want-when you want it. You can customize the home screen to display your favorite apps, making it simple to start streaming the movies and shows you love. Or pick up where you left off.

Voice assistant



Control your Philips Android TV with your voice. Want to play a game, watch Netflix, or find content and apps in the Google Play store? Just tell your TV. You can even command all Google Assistant-compatible smart home devices, like dimming the lights and setting the thermostat on movie night. Without leaving the sofa. The days of searching for the TV remote are over. Now you can use your voice to control your Philips smart TV via Alexa-enabled devices, like Amazon Echo. Turn your TV on, change the channel, switch to your gaming console and more with Alexa.



Specifications

Ambilight

- Ambilight Version: 3-sided
- Ambilight Features: Built in Ambilight+hue, Ambilight Music, Game Mode, Wall colour adaptive, Lounge mode, AmbiWakeup, AmbiSleep

Picture/Display

- Diagonal screen size: 55 inch / 139 cm
- Display: 4K Ultra HD LED
- Panel resolution: 3840x2160
- Aspect ratio: 16:9
- Pixel engine: P5 Perfect Picture Engine
- Picture enhancement: Ultra Resolution, Wide Color Gamut 90% DCI/P3, Dolby Vision, HDR10+, 2400 PPI

Supported Display Resolution

- Computer inputs on all HDMI: up to 4K UHD 3840x2160 @60Hz, HDR supported, HDR10/HLG, HDR supported, HDR10+/HLG
- Video inputs on all HDMI: up to 4K UHD 3840x2160@60Hz, HDR supported, HDR10/HLG (Hybrid Log Gamma), HDR10+/Dolby Vision

Android TV

- OS: Android TV™ 9 (Pie)
- Pre-installed apps: Google Play Movies*, Google Play Music*, Google Search, YouTube, Amazon instant video, BBC iplayer, Netflix
- Memory size(Flash): 16GB*

Smart TV Features

- Interactive TV: HbbTV
- Program: Pause TV, USB recording*
- Ease of Installation: Auto detect Philips devices, Device connection wizard, Network installation wizard, Settings assistant wizard
- Ease of Use: One-stop smart menu button, Onscreen usermanual
- Firmware upgradeable: Firmware auto upgrade wizard, Firmware upgradeable via USB, Online firmware upgrade
- Screen Format Adjustments: Basic - Fill Screen, Fit to screen, Advance - Shift, Zoom, stretch, Wide screen
- Remote Control: with Voice, with Key light, with Muirhead leather
- User Interaction: SimplyShare
- Voice assistant*: Google Assistant built-in, RC with Mic., Works with Alexa

Processing

- Processing Power: Quad Core

Tuner/Reception/Transmission

- HEVC support
- Digital TV: DVB-T/T2/T2-HD/C/S/S2
- MPEG Support: MPEG2, MPEG4
- Video Playback: PAL, SECAM
- TV Program guide*: 8 day Electronic Program Guide
- Signal strength indication
- Teletext: 1000 page Hypertext

Connectivity

- Number of HDMI connections: 4
- Number of USBs: 2
- Wireless connection: Bluetooth 4.2, Wi-Fi 802.11ac, 2x2, Dual band
- Other connections: Common Interface Plus (CI+), Digital audio out (optical), Satellite Connector, Ethernet-LAN RJ-45, Headphone out, Service connector
- HDMI features: 4K, Audio Return Channel
- EasyLink (HDMI-CEC): Remote control pass-through, System audio control, System standby, One touch play
- HDCP 2.3: Yes on all HDMI

Multimedia Applications

- Video Playback Formats: Containers: AVI, MKV, H264/MPEG-4 AVC, MPEG-1, MPEG-2, MPEG-4, WMV9/VC1, HEVC (H.265), VP9
- Subtitles Formats Support: .SRT, .SUB, .TXT, .SMI
- Music Playback Formats: AAC, MP3, WAV, WMA (v2 up to v9.2), WMA-PRO (v9 and v10)
- Picture Playback Formats: JPEG, BMP, GIF, PNG, 360 photo, HEIF

Power

- Mains power: AC 220 - 240 V 50/60Hz
- Ambient temperature: 5 °C to 35 °C
- Standby power consumption: <0.3W
- Power Saving Features: Auto switch-off timer, Light sensor, Picture mute (for radio), Eco mode
- Off mode power consumption: N/A

EU Energy card

- EPREL registration numbers: 420631
- Diagonal screen size (inch): 55
- Diagonal screen size (metric): 139

- Energy class for SDR: G
- On mode power demand for SDR: 96 Kwh/1000h
- Energy class for HDR: G
- On mode power demand for HDR: 125 Kwh/1000h
- Networked standby mode: <2.0 W
- Off mode power consumption: n.a.
- Panel technology used: LED LCD

Sound

- Sound Enhancement: 5 Band Equalizer, A.I. Sound, Clear Dialogue, Dolby Bass Enhancement, Dolby Volume Leveler, Night mode, Dolby Atmos
- Speaker configuration: 2x6W mid speaker, 2x9 high speaker, 20W woofer
- Audio: Sound by Bowers & Wilkins, 2.1.2 Channel, Output power : 50 Watt (RMS)
- Codec: AC-4, Dolby Atmos, Dolby Digital MS12 V2.3, DTS-HD(M6)

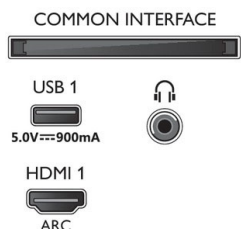
Dimensions

- Box dimensions (W x H x D): 1360.0 x 952.0 x 170.0 mm
- Product weight: 16.7 kg
- Product weight (+stand): 21.8 kg
- Set dimensions (W x H x D): 1230.8 x 717.9 x 60.8 mm
- Set dimensions with stand (W x H x D): 1230.8 x 792.6 x 281.8 mm
- Stand dimensions (W x H x D): 880.0 x 80.0 x 281.8 mm
- Weight incl. Packaging: 25.8 kg
- Wall mount compatible: 300 x 300 mm

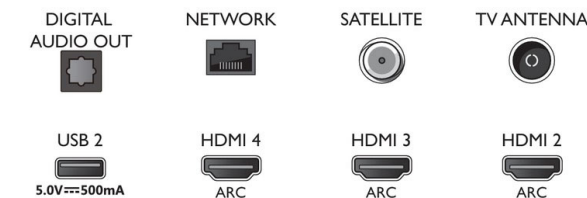


Connections

Side



Bottom



Issue date 2022-07-14

Version: 13.2.1

12 NC: 8670 001 66972
EAN: 87 18863 02407 2

© 2022 Koninklijke Philips N.V.
All Rights reserved.

Specifications are subject to change without notice.
Trademarks are the property of Koninklijke Philips N.V.
or their respective owners.

www.philips.com

- * EPG and actual visibility (up to 8 days) is country and operator dependent.
- * Android App offerings vary per country. For more details please visit your local Google Play Store.
- * The TV supports DVB reception for 'Free to air' broadcast. Specific DVB operators may not be supported. An up to date list can be found in the FAQ section of the Philips support website. For some operators Conditional Access and subscription are required. Contact your operator for more information.
- * Philips TV Remote app and related functionalities vary per TV model, operator, and country, as well as smart device model and OS. For more details please visit: www.philips.com/TVRemoteapp.
- * Smart TV app offerings vary per TV model and country. For more details please visit: www.philips.com/smarttv.
- * USB recording for digital channels only, recordings may be limited by broadcast copy protection (CI+). Country and channel restrictions may apply.
- * Please note that your Amazon Apps may not always be available in your country. (Currently Amazon apps works only in UK, Germany, Austria)
- * This television contains lead only in certain parts or components where no technology alternatives exist in accordance with existing exemption clauses under the RoHS Directive.
- * Cloud Gaming offering depends on game providers.
- * Memory size (Flash) : 16G, the actual available disc space may differ (dependent on e.g. (pre-)installed apps, installed operating system, etc.)
- * HDMI connection is required for soundbar, speaker and other audio device.